

MECHANICAL SPECIFICATIONS - GENERAL

ABBREVIATED SPECIFICATION DESCRIBES SOME EQUIPMENT AND MATERIALS TO BE INCLUDED IN THE GENERAL MECHANICAL SPECIFICATIONS FOR RATINGS OF FIRE PROTECTION WILL BE ACCEPTED.

- 1. GENERAL
2. REQUIREMENTS
3. READ AND CONFORM TO:
A. DIVISION 1 REQUIREMENTS AND DOCUMENTS REFERRED TO THEREIN.
B. SPECIFICATIONS AND DOCUMENTS ACCOMPANY THIS DRAWING.
C. WHEREVER DIFFERENCES OCCUR IN THE TENDER DOCUMENTS, THE MOST FAVORABLE TO CONTRACTOR GOVERNS.
D. ENSURE SUB-CONTRACTORS UNDERSTANDING THE WORK PROVIDE A S.O.R. PERFORMANCE BOND OR MATERIALS PAYMENT BOND IN ADVANCE.

- 1.2 SCOPE OF WORK
1.2.1 PROVISIONS AND METHODS MENTIONED OR SHOWN IN THE CONTRACT DOCUMENTS COMPLETE WITH NOTICES NECESSARY FOR A COMPLETE OBSERVANCE OF ALL APPLICABLE CODES, ORDINANCES AND REGULATIONS.
1.2.2 DISSECTION AND REMOVAL OF VARIOUS MECHANICAL EQUIPMENT IN AREAS TO BE REPAIRED OR REPLACED.
1.2.3 DISSECTION AND REMOVAL OF VARIOUS MECHANICAL SYSTEMS AND EQUIPMENT ELEMENTS DERIVED FROM RENOVATED OR EXISTING WORK.

- 1.3 SUBMITTALS
1.3.1 SHOP DRAWINGS: PREPARE AND SUBMIT TWO (2) COPIES OF SHOP DRAWINGS AND MATERIALS TO THE CONSULTANT FOR REVIEW AND APPROVAL.
1.3.2 CLEARLY INDICATE MANUFACTURER'S AND SUPPLIER'S NAMES, MODEL NUMBERS, PARTS LIST, AND PERFORMANCE.
1.3.3 THE CONSULTANT WILL NOT REVIEW SHOP DRAWINGS THAT FAIL TO BEAR THE CONTRACTOR'S STAMP OF APPROVAL OR CERTIFICATION.

- 1.4 CHARGES FOR EXTRAS & CREDITS
1.4.1 EXTRAS AND CREDITS FOR DIVISION 21, 23 AND 25 CONTRACTORS AND SUB-CONTRACTORS SHALL BE CHARGED ON THE FOLLOWING BASIS:
1.4.2 LABOR CHARGES FOR EXTRAS SHALL BE THE SAME AS THOSE LISTED IN THE NATIONAL LABOR CALCULATOR.
1.4.3 LABOR CHARGES FOR EXTRAS SHALL BE THE SAME AS THOSE LISTED IN THE NATIONAL LABOR CALCULATOR.

- 1.5 FIRE PROTECTION
1.5.1 ARRANGE FOR A FIRE WATCH DURING THE DURATION OF THE SHUTDOWN AND NEW INSTALLATION.
1.5.2 ARRANGE FOR A FIRE WATCH SERVICE IN THE ENTIRE BUILDING WHEN THE FIRE ALARM SYSTEM IS DOWN OR IN-BY-PASS MODE.
1.5.3 ALSO ARRANGE FOR A FIRE WATCH SERVICE IN THE WHOLE BUILDING STARTING DEVELOPMENT OF EXISTING STANDPIPE AND FOR NEW STANDPIPE MODIFICATIONS. INCLUDE ALL COSTS IN THE LUMP SUM CONTRACT PRICE.

- 1.6 STANDPIPE
1.6.1 MATERIAL: UPT TO 16" x 16" (400X400) 16 GAUGE MOUNTING FRAME, EXTERIOR 16" x 16" (400X400) 14 GAUGE DOOR, 16 GAUGE MOUNTING FRAME.
1.6.2 FINISH: CONTINUOUS, CONCEALED.
1.6.3 LATCH: STAINLESS STEEL SCREWDRIVER OPERATED CAM LATCH.
1.6.4 FINISH: STEEL, 5-STAGE IRON PHOSPHATE PREPARATION WITH PRIME COAT OF EPOXY BAKING ENAMEL OR STAINLESS STEEL TYPE 304, NO. 4 SATIN POLISH.

- 2.3 FIRE STOPPING COMPONENTS
2.3.1 APPROVED MANUFACTURERS: 3M PRODUCTS INC.
2.3.2 APPROVED MANUFACTURERS: JOHNSMANVILLE MICRO-LOK.
2.3.3 APPROVED MANUFACTURERS: JOHNSMANVILLE MICRO-LOK.
2.3.4 APPROVED MANUFACTURERS: JOHNSMANVILLE MICRO-LOK.

- 2.4 MANUFACTURING
2.4.1 APPROVED MANUFACTURERS: JOHNSMANVILLE MICRO-LOK.
2.4.2 APPROVED MANUFACTURERS: JOHNSMANVILLE MICRO-LOK.
2.4.3 APPROVED MANUFACTURERS: JOHNSMANVILLE MICRO-LOK.

MECHANICAL SPECIFICATIONS - GENERAL

- 1. ACCESS DOORS IN FIRE SEPARATIONS OR FIRE RATED ASSEMBLIES: ULC LISTED BUT BEFORE THE WORK HAS BEEN TESTED OR CONNECTED.
2. HINGE: CONTINUOUS, CONCEALED.
3. LATCH: STAINLESS STEEL SCREWDRIVER OPERATED CAM LATCH.
4. FINISH: STEEL, 5-STAGE IRON PHOSPHATE PREPARATION WITH PRIME COAT OF EPOXY BAKING ENAMEL OR STAINLESS STEEL TYPE 304, NO. 4 SATIN POLISH.

- 3. SUPPORTS & ANCHORS
3.1 SUPPORTS
3.1.1 APPROVED MANUFACTURERS: JOHNSMANVILLE MICRO-LOK.
3.1.2 APPROVED MANUFACTURERS: JOHNSMANVILLE MICRO-LOK.
3.1.3 APPROVED MANUFACTURERS: JOHNSMANVILLE MICRO-LOK.

- 3.2 FIRE STOPPING COMPONENTS
3.2.1 APPROVED MANUFACTURERS: JOHNSMANVILLE MICRO-LOK.
3.2.2 APPROVED MANUFACTURERS: JOHNSMANVILLE MICRO-LOK.
3.2.3 APPROVED MANUFACTURERS: JOHNSMANVILLE MICRO-LOK.

- 3.3 APPROVED MANUFACTURERS: JOHNSMANVILLE MICRO-LOK.
3.3.1 APPROVED MANUFACTURERS: JOHNSMANVILLE MICRO-LOK.
3.3.2 APPROVED MANUFACTURERS: JOHNSMANVILLE MICRO-LOK.

- 3.4 APPROVED MANUFACTURERS: JOHNSMANVILLE MICRO-LOK.
3.4.1 APPROVED MANUFACTURERS: JOHNSMANVILLE MICRO-LOK.
3.4.2 APPROVED MANUFACTURERS: JOHNSMANVILLE MICRO-LOK.

- 3.5 APPROVED MANUFACTURERS: JOHNSMANVILLE MICRO-LOK.
3.5.1 APPROVED MANUFACTURERS: JOHNSMANVILLE MICRO-LOK.
3.5.2 APPROVED MANUFACTURERS: JOHNSMANVILLE MICRO-LOK.

- 3.6 APPROVED MANUFACTURERS: JOHNSMANVILLE MICRO-LOK.
3.6.1 APPROVED MANUFACTURERS: JOHNSMANVILLE MICRO-LOK.
3.6.2 APPROVED MANUFACTURERS: JOHNSMANVILLE MICRO-LOK.

- 3.7 APPROVED MANUFACTURERS: JOHNSMANVILLE MICRO-LOK.
3.7.1 APPROVED MANUFACTURERS: JOHNSMANVILLE MICRO-LOK.
3.7.2 APPROVED MANUFACTURERS: JOHNSMANVILLE MICRO-LOK.

PLUMBING SPECIFICATIONS

- 1. PLUMBING PIPING
1.1 PLUMBING PIPING - GENERAL
1.1.1 APPROVED MANUFACTURERS: JOHNSMANVILLE MICRO-LOK.
1.1.2 APPROVED MANUFACTURERS: JOHNSMANVILLE MICRO-LOK.
1.1.3 APPROVED MANUFACTURERS: JOHNSMANVILLE MICRO-LOK.

- 1.2 APPROVED MANUFACTURERS: JOHNSMANVILLE MICRO-LOK.
1.2.1 APPROVED MANUFACTURERS: JOHNSMANVILLE MICRO-LOK.
1.2.2 APPROVED MANUFACTURERS: JOHNSMANVILLE MICRO-LOK.

- 1.3 APPROVED MANUFACTURERS: JOHNSMANVILLE MICRO-LOK.
1.3.1 APPROVED MANUFACTURERS: JOHNSMANVILLE MICRO-LOK.
1.3.2 APPROVED MANUFACTURERS: JOHNSMANVILLE MICRO-LOK.

- 1.4 APPROVED MANUFACTURERS: JOHNSMANVILLE MICRO-LOK.
1.4.1 APPROVED MANUFACTURERS: JOHNSMANVILLE MICRO-LOK.
1.4.2 APPROVED MANUFACTURERS: JOHNSMANVILLE MICRO-LOK.

- 1.5 APPROVED MANUFACTURERS: JOHNSMANVILLE MICRO-LOK.
1.5.1 APPROVED MANUFACTURERS: JOHNSMANVILLE MICRO-LOK.
1.5.2 APPROVED MANUFACTURERS: JOHNSMANVILLE MICRO-LOK.

- 1.6 APPROVED MANUFACTURERS: JOHNSMANVILLE MICRO-LOK.
1.6.1 APPROVED MANUFACTURERS: JOHNSMANVILLE MICRO-LOK.
1.6.2 APPROVED MANUFACTURERS: JOHNSMANVILLE MICRO-LOK.

- 1.7 APPROVED MANUFACTURERS: JOHNSMANVILLE MICRO-LOK.
1.7.1 APPROVED MANUFACTURERS: JOHNSMANVILLE MICRO-LOK.
1.7.2 APPROVED MANUFACTURERS: JOHNSMANVILLE MICRO-LOK.

- 1.8 APPROVED MANUFACTURERS: JOHNSMANVILLE MICRO-LOK.
1.8.1 APPROVED MANUFACTURERS: JOHNSMANVILLE MICRO-LOK.
1.8.2 APPROVED MANUFACTURERS: JOHNSMANVILLE MICRO-LOK.

PLUMBING SPECIFICATIONS

- A. AFTER ALL PIPES HAVE BEEN PLACED IN POSITION AND ALL BRANCHES NOTICED BUT BEFORE THE WORK HAS BEEN TESTED OR CONNECTED.
B. HINGE: CONTINUOUS, CONCEALED.
C. LATCH: STAINLESS STEEL SCREWDRIVER OPERATED CAM LATCH.
D. FINISH: STEEL, 5-STAGE IRON PHOSPHATE PREPARATION WITH PRIME COAT OF EPOXY BAKING ENAMEL OR STAINLESS STEEL TYPE 304, NO. 4 SATIN POLISH.

- 1. APPROVED MANUFACTURERS: JOHNSMANVILLE MICRO-LOK.
1.1 APPROVED MANUFACTURERS: JOHNSMANVILLE MICRO-LOK.
1.2 APPROVED MANUFACTURERS: JOHNSMANVILLE MICRO-LOK.

- 1.3 APPROVED MANUFACTURERS: JOHNSMANVILLE MICRO-LOK.
1.3.1 APPROVED MANUFACTURERS: JOHNSMANVILLE MICRO-LOK.
1.3.2 APPROVED MANUFACTURERS: JOHNSMANVILLE MICRO-LOK.

- 1.4 APPROVED MANUFACTURERS: JOHNSMANVILLE MICRO-LOK.
1.4.1 APPROVED MANUFACTURERS: JOHNSMANVILLE MICRO-LOK.
1.4.2 APPROVED MANUFACTURERS: JOHNSMANVILLE MICRO-LOK.

- 1.5 APPROVED MANUFACTURERS: JOHNSMANVILLE MICRO-LOK.
1.5.1 APPROVED MANUFACTURERS: JOHNSMANVILLE MICRO-LOK.
1.5.2 APPROVED MANUFACTURERS: JOHNSMANVILLE MICRO-LOK.

- 1.6 APPROVED MANUFACTURERS: JOHNSMANVILLE MICRO-LOK.
1.6.1 APPROVED MANUFACTURERS: JOHNSMANVILLE MICRO-LOK.
1.6.2 APPROVED MANUFACTURERS: JOHNSMANVILLE MICRO-LOK.

- 1.7 APPROVED MANUFACTURERS: JOHNSMANVILLE MICRO-LOK.
1.7.1 APPROVED MANUFACTURERS: JOHNSMANVILLE MICRO-LOK.
1.7.2 APPROVED MANUFACTURERS: JOHNSMANVILLE MICRO-LOK.

- 1.8 APPROVED MANUFACTURERS: JOHNSMANVILLE MICRO-LOK.
1.8.1 APPROVED MANUFACTURERS: JOHNSMANVILLE MICRO-LOK.
1.8.2 APPROVED MANUFACTURERS: JOHNSMANVILLE MICRO-LOK.

HVAC SPECIFICATIONS

- 2. HVAC DUCT INSULATION
2.1 GLASS FIBRE, FLEXIBLE
2.2 APPROVED MANUFACTURERS: JOHNSMANVILLE MICRO-LOK.
2.3 APPROVED MANUFACTURERS: JOHNSMANVILLE MICRO-LOK.

- 2.4 APPROVED MANUFACTURERS: JOHNSMANVILLE MICRO-LOK.
2.4.1 APPROVED MANUFACTURERS: JOHNSMANVILLE MICRO-LOK.
2.4.2 APPROVED MANUFACTURERS: JOHNSMANVILLE MICRO-LOK.

- 2.5 APPROVED MANUFACTURERS: JOHNSMANVILLE MICRO-LOK.
2.5.1 APPROVED MANUFACTURERS: JOHNSMANVILLE MICRO-LOK.
2.5.2 APPROVED MANUFACTURERS: JOHNSMANVILLE MICRO-LOK.

- 2.6 APPROVED MANUFACTURERS: JOHNSMANVILLE MICRO-LOK.
2.6.1 APPROVED MANUFACTURERS: JOHNSMANVILLE MICRO-LOK.
2.6.2 APPROVED MANUFACTURERS: JOHNSMANVILLE MICRO-LOK.

- 2.7 APPROVED MANUFACTURERS: JOHNSMANVILLE MICRO-LOK.
2.7.1 APPROVED MANUFACTURERS: JOHNSMANVILLE MICRO-LOK.
2.7.2 APPROVED MANUFACTURERS: JOHNSMANVILLE MICRO-LOK.

- 2.8 APPROVED MANUFACTURERS: JOHNSMANVILLE MICRO-LOK.
2.8.1 APPROVED MANUFACTURERS: JOHNSMANVILLE MICRO-LOK.
2.8.2 APPROVED MANUFACTURERS: JOHNSMANVILLE MICRO-LOK.

- 2.9 APPROVED MANUFACTURERS: JOHNSMANVILLE MICRO-LOK.
2.9.1 APPROVED MANUFACTURERS: JOHNSMANVILLE MICRO-LOK.
2.9.2 APPROVED MANUFACTURERS: JOHNSMANVILLE MICRO-LOK.

- 2.10 APPROVED MANUFACTURERS: JOHNSMANVILLE MICRO-LOK.
2.10.1 APPROVED MANUFACTURERS: JOHNSMANVILLE MICRO-LOK.
2.10.2 APPROVED MANUFACTURERS: JOHNSMANVILLE MICRO-LOK.

HVAC SPECIFICATIONS

- DIRECTION, AND TWO GAUGES HEAVIER FOR SIZES OVER 24" (600 MM).
2. GAUGES FABRICATED FROM METAL TO STRUCTURE TO BE USED IN ALL AREAS.
3. MANUFACTURER: CERTANTO SOFT TOUCH AND WIDE WAF.
4. OTHER ACCEPTABLE MANUFACTURERS: JOHNSMANVILLE MICRO-LOK.

- 3. APPROVED MANUFACTURERS: JOHNSMANVILLE MICRO-LOK.
3.1 APPROVED MANUFACTURERS: JOHNSMANVILLE MICRO-LOK.
3.2 APPROVED MANUFACTURERS: JOHNSMANVILLE MICRO-LOK.

- 3.3 APPROVED MANUFACTURERS: JOHNSMANVILLE MICRO-LOK.
3.3.1 APPROVED MANUFACTURERS: JOHNSMANVILLE MICRO-LOK.
3.3.2 APPROVED MANUFACTURERS: JOHNSMANVILLE MICRO-LOK.

- 3.4 APPROVED MANUFACTURERS: JOHNSMANVILLE MICRO-LOK.
3.4.1 APPROVED MANUFACTURERS: JOHNSMANVILLE MICRO-LOK.
3.4.2 APPROVED MANUFACTURERS: JOHNSMANVILLE MICRO-LOK.

- 3.5 APPROVED MANUFACTURERS: JOHNSMANVILLE MICRO-LOK.
3.5.1 APPROVED MANUFACTURERS: JOHNSMANVILLE MICRO-LOK.
3.5.2 APPROVED MANUFACTURERS: JOHNSMANVILLE MICRO-LOK.

- 3.6 APPROVED MANUFACTURERS: JOHNSMANVILLE MICRO-LOK.
3.6.1 APPROVED MANUFACTURERS: JOHNSMANVILLE MICRO-LOK.
3.6.2 APPROVED MANUFACTURERS: JOHNSMANVILLE MICRO-LOK.

- 3.7 APPROVED MANUFACTURERS: JOHNSMANVILLE MICRO-LOK.
3.7.1 APPROVED MANUFACTURERS: JOHNSMANVILLE MICRO-LOK.
3.7.2 APPROVED MANUFACTURERS: JOHNSMANVILLE MICRO-LOK.

- 3.8 APPROVED MANUFACTURERS: JOHNSMANVILLE MICRO-LOK.
3.8.1 APPROVED MANUFACTURERS: JOHNSMANVILLE MICRO-LOK.
3.8.2 APPROVED MANUFACTURERS: JOHNSMANVILLE MICRO-LOK.

HVAC SPECIFICATIONS

- C. AFTER ADJUSTMENT, TAKE MEASUREMENTS TO VERIFY BALANCE HAS NOT BEEN DISBURSED OR THAT SUCH CORRECTIONS HAVE BEEN RECEIVED.
D. LEAVE SYSTEMS IN PROPER WORKING ORDER, REPLACING BOLT HEADS, CLEANING ACCESS DOORS, CLOSING DOORS TO ELECTRICAL SWITCH BOXES, AND RESTORING TERMINALS TO ORIGINAL POSITION.
E. AT FINAL INSPECTION, CHECK ROOM SELECTIONS OF DATA RECORDED IN THE FIELD.
F. CHECK AND ADJUST SYSTEMS APPROXIMATELY SIX MONTHS AFTER FINAL ACCEPTANCE.

- 10. AIR SYSTEM PROCEDURE
10.1 AIR SYSTEM PROCEDURE
10.2 AIR SYSTEM PROCEDURE
10.3 AIR SYSTEM PROCEDURE

- 10.4 AIR SYSTEM PROCEDURE
10.4.1 AIR SYSTEM PROCEDURE
10.4.2 AIR SYSTEM PROCEDURE

- 10.5 AIR SYSTEM PROCEDURE
10.5.1 AIR SYSTEM PROCEDURE
10.5.2 AIR SYSTEM PROCEDURE

- 10.6 AIR SYSTEM PROCEDURE
10.6.1 AIR SYSTEM PROCEDURE
10.6.2 AIR SYSTEM PROCEDURE

- 10.7 AIR SYSTEM PROCEDURE
10.7.1 AIR SYSTEM PROCEDURE
10.7.2 AIR SYSTEM PROCEDURE

- 10.8 AIR SYSTEM PROCEDURE
10.8.1 AIR SYSTEM PROCEDURE
10.8.2 AIR SYSTEM PROCEDURE

- 10.9 AIR SYSTEM PROCEDURE
10.9.1 AIR SYSTEM PROCEDURE
10.9.2 AIR SYSTEM PROCEDURE

Client: Halton District School Board
2050 Guelph Line
Burlington, Ontario
T. A. BLAKELOCK H.S.
RENOVATIONS
1160 Rebecca Street
Oakville, ON

Architect: Snyder
Snyder Architects Inc.
100 Broadview Ave. Suite 200
Toronto, Ontario M4M 3B3
Tel: 905-525-1110
Fax: 905-525-1111

Structural Consultants: Kalos Engineering Inc.
300 York Boulevard
Halton Hills, Ontario L9K 3K6
Tel: 905-331-9119
Mechanical and Electrical Consultants: EXP
1268 S. Service Rd.
Stoney Creek, Ontario L8R 6R9
Tel: 905-525-6009

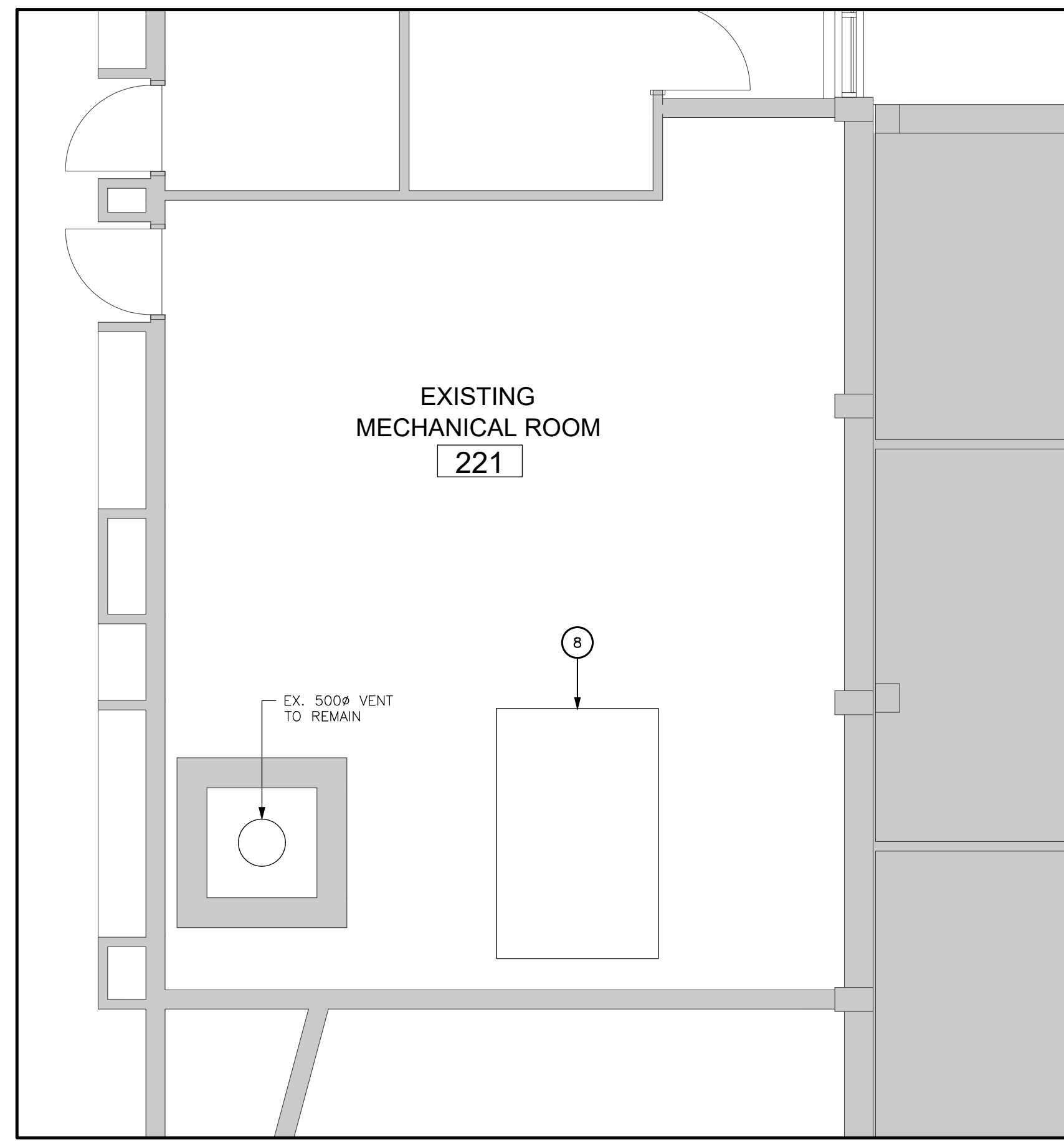
1. GENERAL
1.1 GENERAL REQUIREMENT
A. COOPERATE WITH OTHER TRADES WHOSE WORK AFFECTS OR IS AFFECTED BY YOURS.
B. INSTALL PIPING, WHEREVER POSSIBLE, IN PARTITIONS AND ABOVE CEILING.
C. COORDINATE WITH OTHER TRADES WHOSE WORK AFFECTS OR IS AFFECTED BY YOURS.

2. FIRE PROTECTION SPECIFICATIONS
2.1 ACCEPTABLE MANUFACTURERS
A. STEEL PIPE: ASTM A53, SCHEDULE 40.
B. STEEL PIPE: ASTM A53, SCHEDULE 40.
C. STEEL PIPE: ASTM A53, SCHEDULE 40.

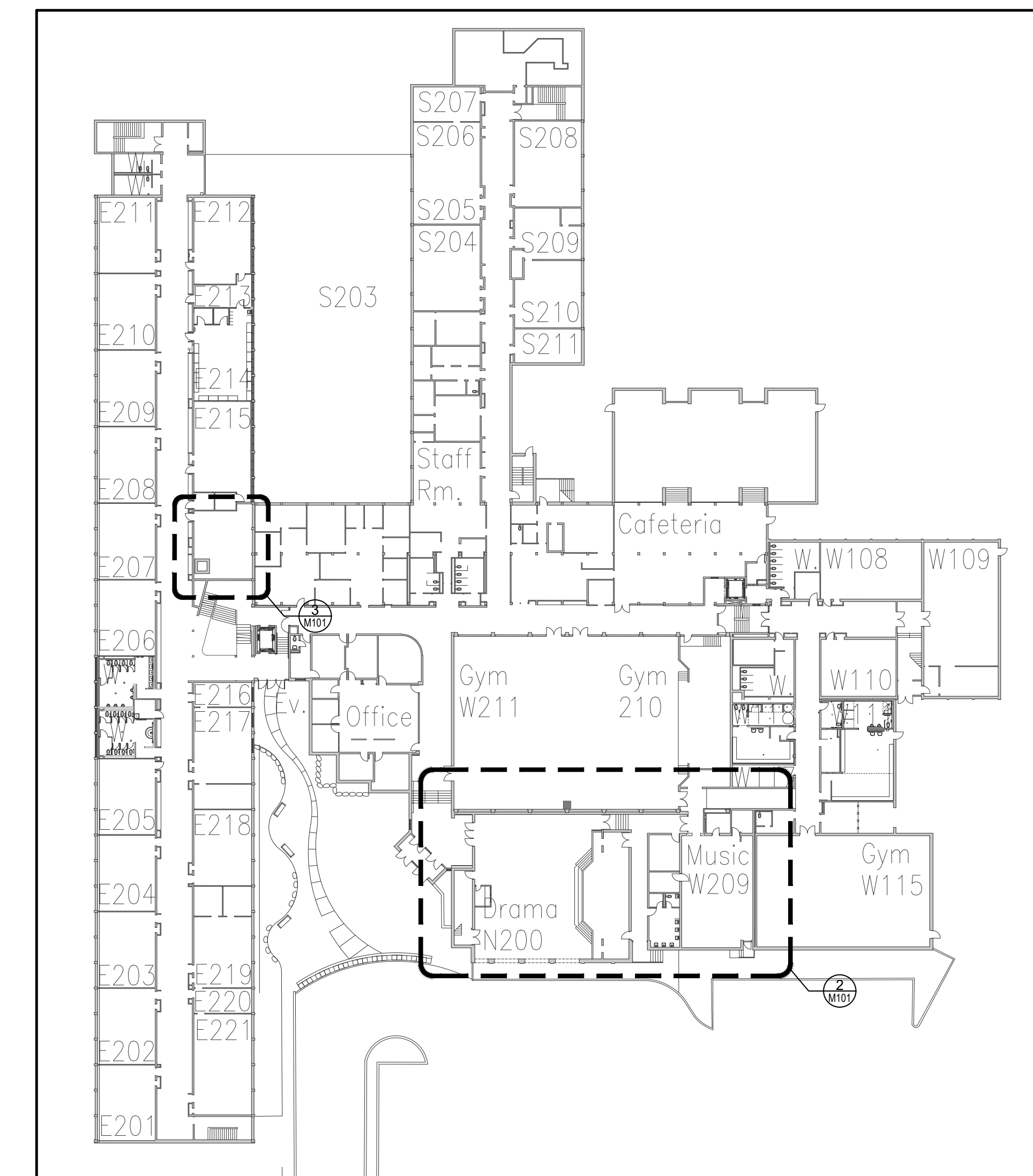
3. VALVES - GENERAL
3.1 APPROVED MANUFACTURERS: JOHNSMANVILLE MICRO-LOK.
3.2 APPROVED MANUFACTURERS: JOHNSMANVILLE MICRO-LOK.
3.3 APPROVED MANUFACTURERS: JOHNSMANVILLE MICRO-LOK.

3.4 ISOLATION VALVES
3.5 APPROVED MANUFACTURERS: JOHNSMANVILLE MICRO-LOK.
3.6 APPROVED MANUFACTURERS: JOHNSMANVILLE MICRO-LOK.
3.7 APPROVED MANUFACTURERS: JOHNSMANVILLE MICRO-LOK.

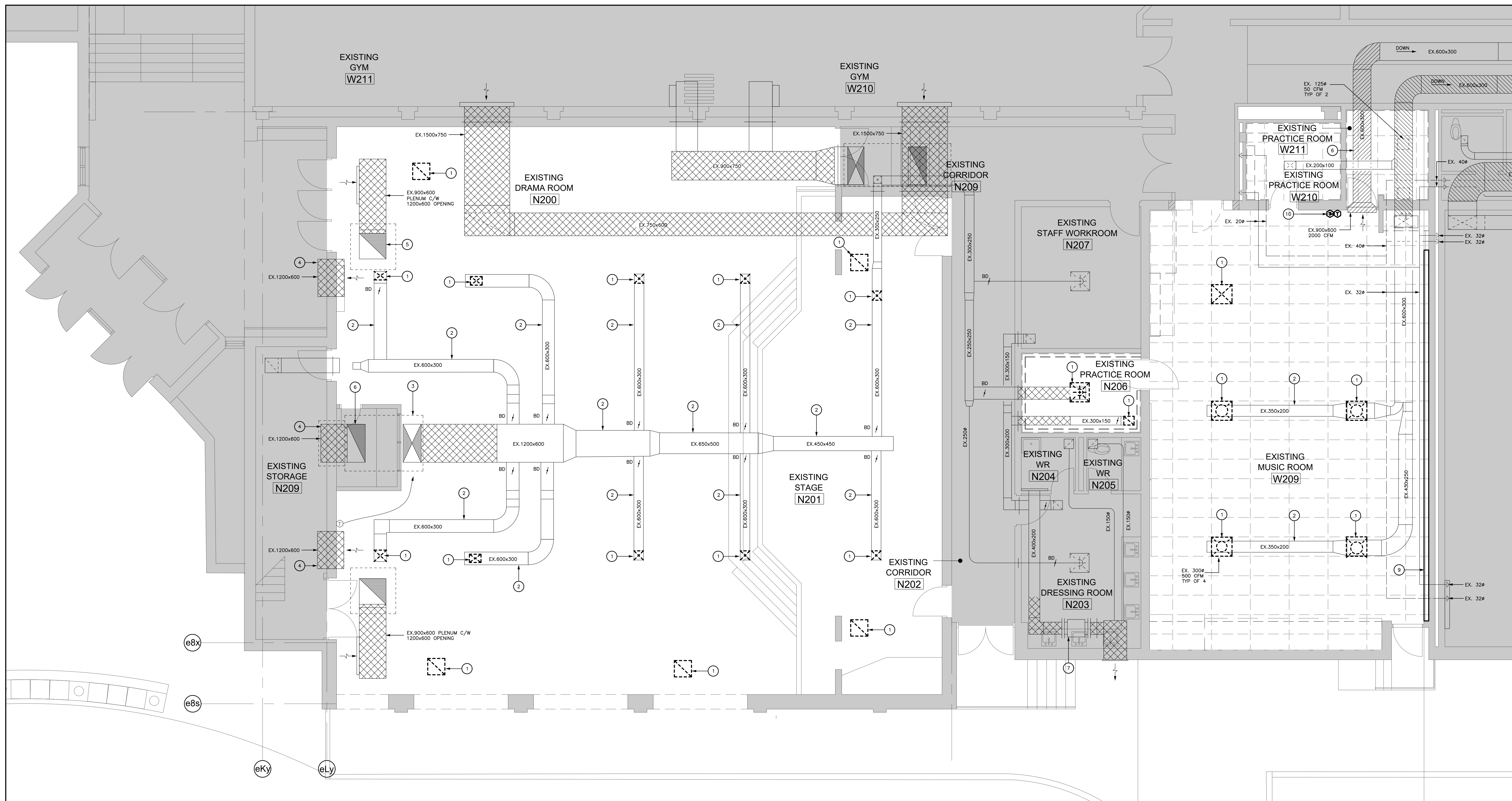
3.8 APPROVED MANUFACTURERS: JOHNSMANVILLE MICRO-LOK.
3.8.1 APPROVED MANUFACTURERS: JOHNSMANVILLE MICRO-LOK.
3.8.2 APPROVED MANUFACTURERS: JOHNSMANVILLE MICRO-LOK.



3 MECHANICAL ROOM DEMOLITION HVAC PLAN
M101 1/50



1 LEVEL 1 KEY PLAN
M101 1/500



2 MAIN ENTRANCE, DRAMA AND MUSIC ROOM DEMOLITION HVAC PLAN
M101 1/50

DRAWING NOTES

- 1 EXISTING DIFFUSER/GRILLE TO BE REMOVED.
- 2 EXISTING SUPPLY AIR DUCT TO REMAIN.
- 3 OUTLINE OF EXISTING ROOFTOP HVAC UNIT TO REMAIN.
- 4 DUCTWORK CONTINUES TO HIGH LEVEL MECHANICAL MEZZANINE SPACE.
- 5 EXISTING EXHAUST AIR DUCTWORK CONTINUES UP TO FAN ON ROOF.
- 6 EXISTING RETURN AIR DUCTWORK TO REMAIN.
- 7 EXISTING EXHAUST FAN TO REMAIN.
- 8 EXISTING HVAC UNIT TO REMAIN.
- 9 EXISTING RADIATOR COVER TO BE REMOVED.
- 10 EXISTING T-STAT TO BE REMOVED AND RELOCATED.

Client
Halton District School Board
2050 Guelph Line
Burlington, Ontario

T. A. BLAKELOCK H.S.
RENOVATIONS

1160 Rebecca Street
Oakville, ON

Architect
snyder
Snyder Architects Inc.
100 Broadview Ave. 2nd Fl. Toronto, ON M6E 3B3
Tel: 416-593-2442 Fax: 416-593-4443
www.snyderarchitects.ca

Consultants
Structural Consultants
Kalos Engineering Inc.
300 York Boulevard
Hamilton, Ontario, L8R 3K6
Tel: 905-333-9119
Mechanical and Electrical Consultants
EXP
1266 S. Service Rd.
Stoney Creek, Ontario, L3E 5P9
Tel: 905-525-6069



No.	Revisions	Date
3	ISSUED FOR TENDER	2026/05/26
2	ISSUED FOR PERMIT	2026/05/11
1	ISSUED FOR REVIEW	2026/04/21
No.	Issue	Date

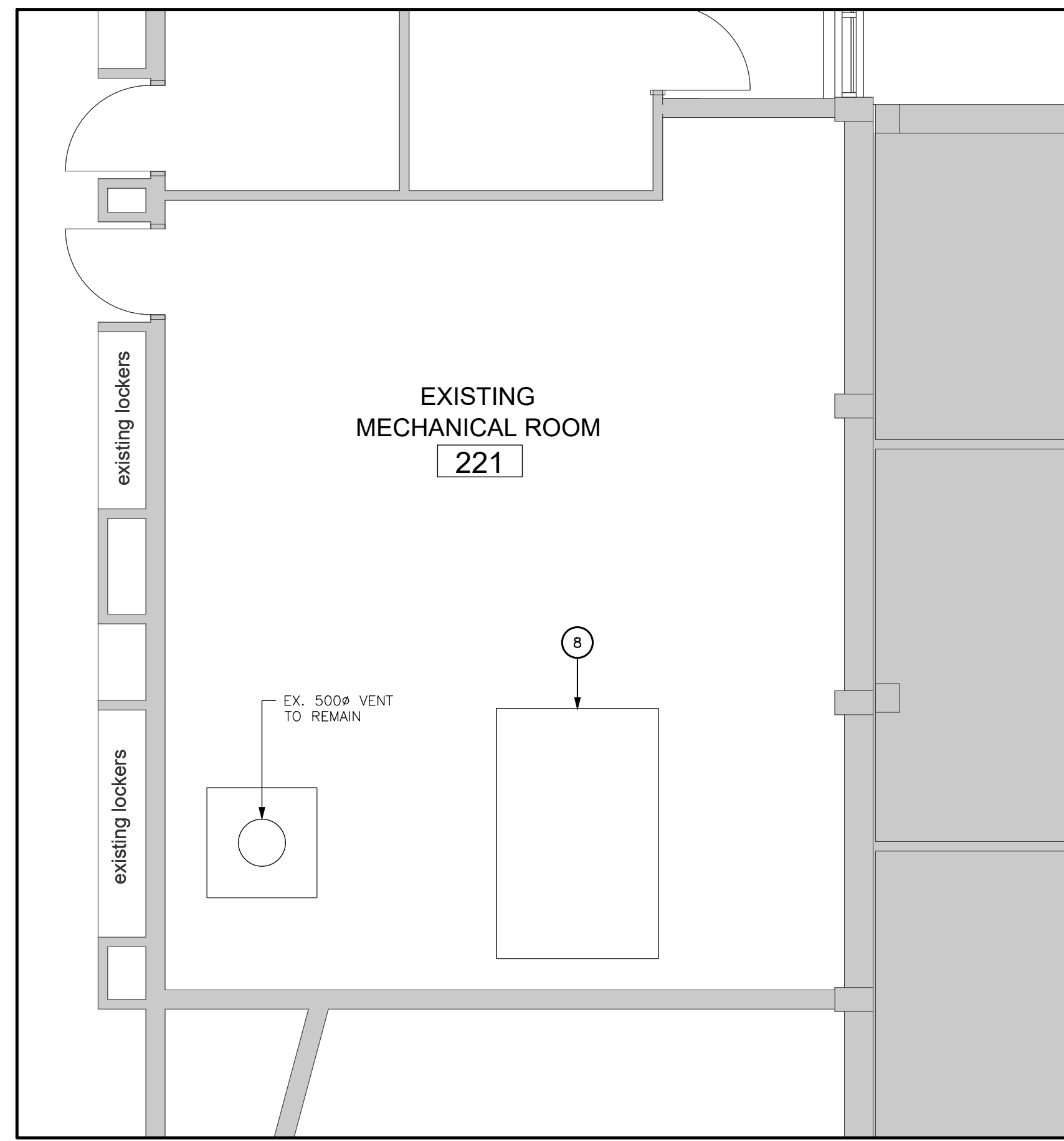
General Contractor shall check and verify all dimensions and report all errors and omissions to the Architect. Do not scale the drawings. Drawings shall not be used for construction purposes until issued by the Architect for construction.

GENERAL NOTES

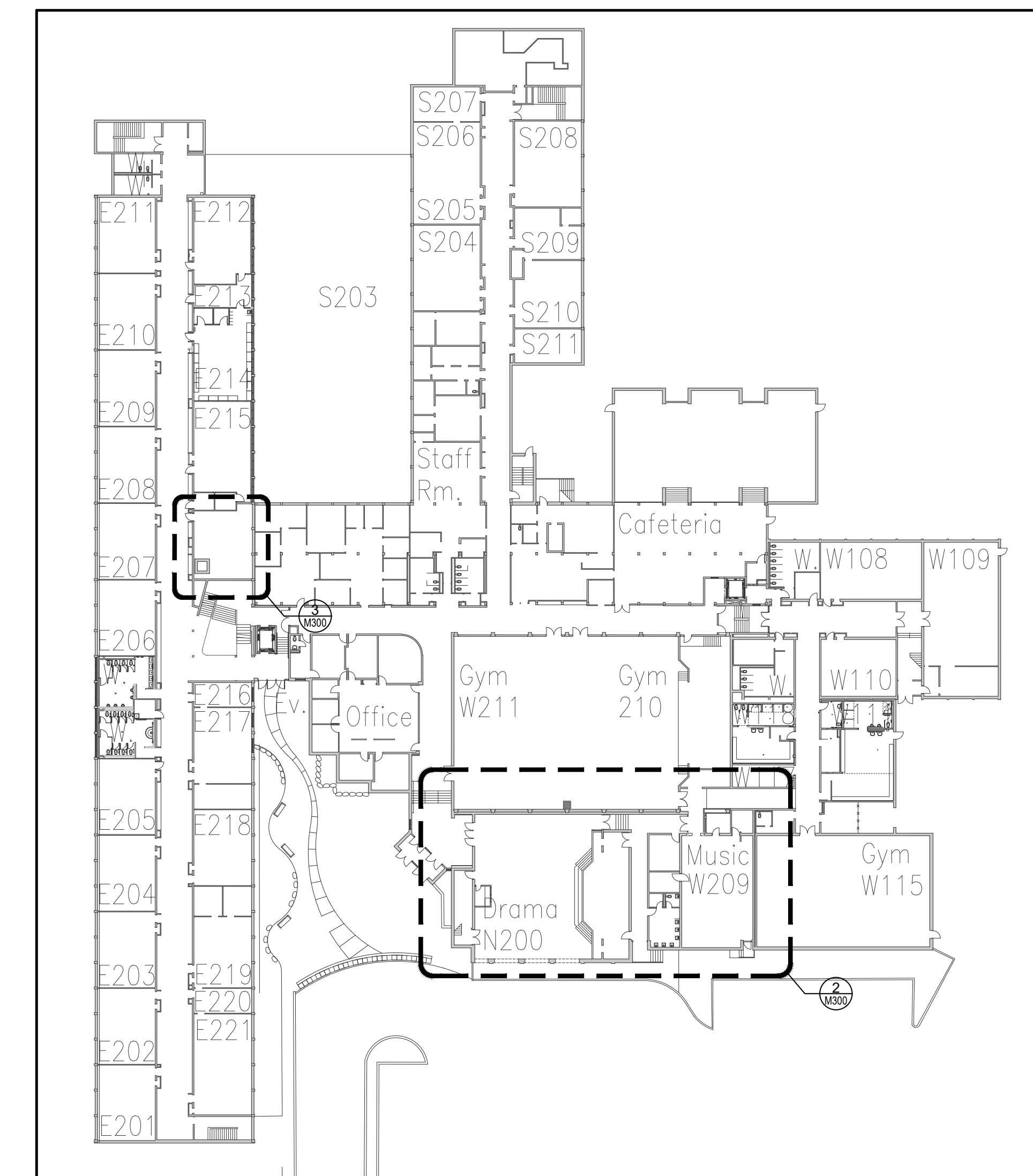
- A) THE EXISTING SERVICES SHOWN ON THIS DRAWING HAVE BEEN TAKEN FROM THE ORIGINAL CONSTRUCTION DRAWINGS. THIS INFORMATION MUST NOT BE ASSUMED TO BE COMPLETE OR UP-TO-DATE. THE MECHANICAL CONTRACTOR SHALL CARRY OUT A FULL SURVEY OF ALL EXISTING SERVICES AND STRUCTURE TO CONFIRM THE SIZE AND LOCATION OF THESE SERVICES, BEFORE THE COMMENCEMENT OF ANY WORKS.
- B) FOR DRAWING LEGENDS SEE DRAWING M000.

Drawing Title:
LEVEL 1 - MAIN ENTRANCE, DRAMA AND MUSIC ROOM, AND MECHANICAL ROOM DEMOLITION HVAC PLANS

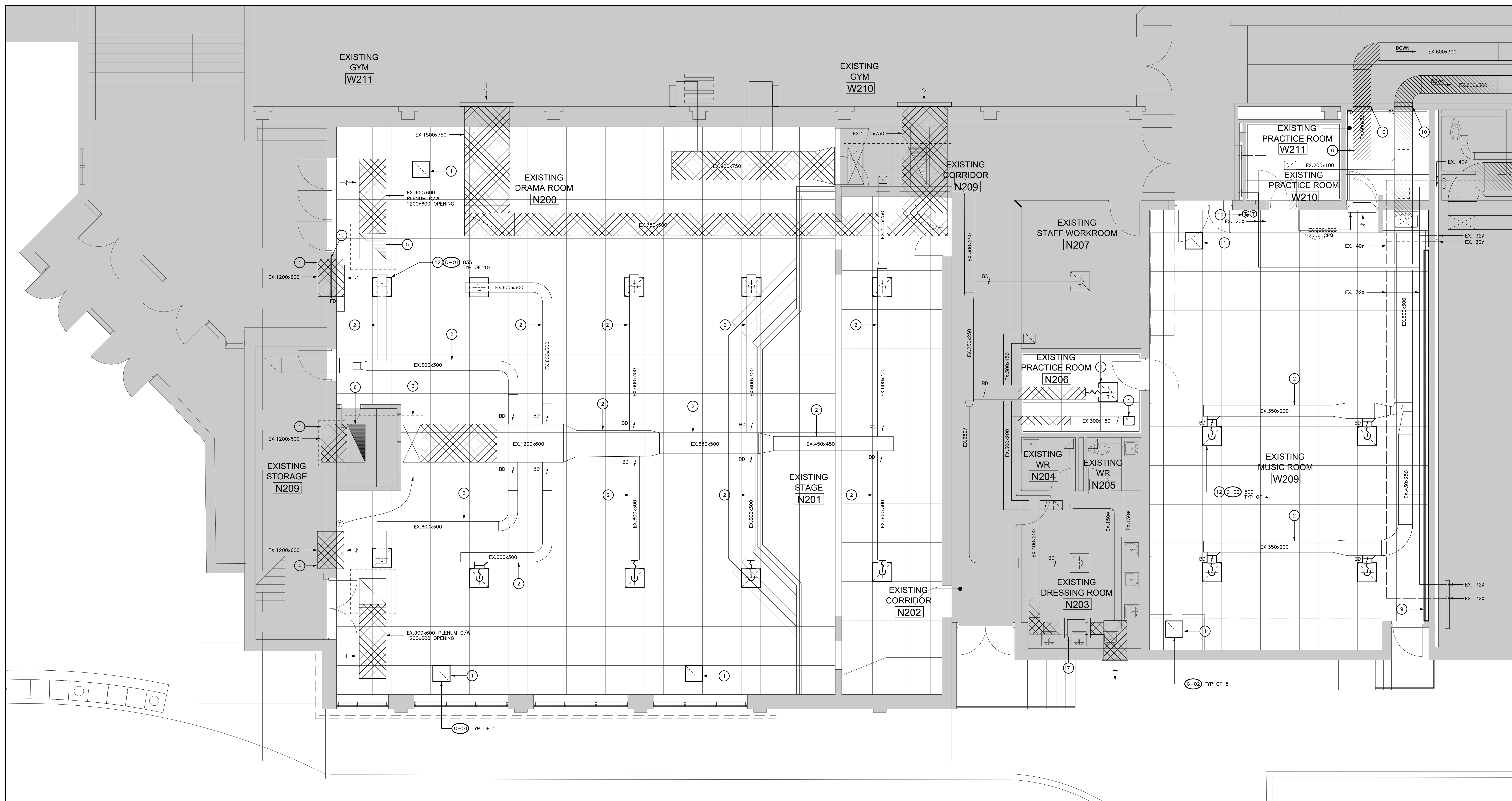
Scale:	AS NOTED	Date:	2026-04-02
Drawn by:	CC	Checked by:	WD
Job No.	ALL-22020201	Drawing No.	M101



3 MECHANICAL ROOM HVAC PLAN
M300 1/50



1 LEVEL 1 KEY PLAN
M301 1/500



2 MAIN ENTRANCE, DRAMA AND MUSIC ROOM PROPOSED HVAC PLAN
M300 1/50

DRAWING NOTES

- 1 NEW DIFFUSER/GRILLE.
- 2 EXISTING SUPPLY AIR DUCT TO REMAIN.
- 3 OUTLINE OF EXISTING ROOFTOP HVAC UNIT TO REMAIN.
- 4 DUCTWORK CONTINUES TO HIGH LEVEL MECHANICAL MEZZANINE SPACE.
- 5 EXISTING EXHAUST AIR DUCTWORK CONTINUES UP TO FAN ON ROOF.
- 6 EXISTING RETURN AIR DUCTWORK TO REMAIN.
- 7 EXISTING EXHAUST FAN TO REMAIN.
- 8 EXISTING HVAC UNIT TO REMAIN.
- 9 PROVIDE NEW RADIATOR COVER TO MATCH EXISTING RADIATOR. ALLOW FOR 34" x 36" x 24" HEIGHT RADIATOR. CONFIRM BASED ON SITE CONDITIONS PRIOR TO ORDERING.
- 10 PROVIDE NEW FIRE DAMPER ON EXISTING DUCT. CUT BACK AND MODIFY EXISTING DUCTWORK TO ACCOMMODATE THE NEW FIRE DAMPER.
- 11 NEW LOCATION OF EXISTING THERMOSTAT. EXTEND EXISTING CONTROL WIRING AS REQUIRED.
- 12 AIR BALANCE DIFFUSER TO MATCH AIRFLOW INDICATED.

Client
Halton District School Board
2050 Guelph Line
Burlington, Ontario

T. A. BLAKELOCK H.S.
RENOVATIONS

1160 Rebecca Street
Oakville, ON

Architect

snyder

Snyder Architects Inc.
100 Broadview Ave. Suite 101, Toronto, ON M6K 3J3
Tel: 416-593-2444 Fax: 416-596-8443
www.snyderarchitects.ca

Consultants

Structural Consultants
Kalos Engineering Inc.
300 York Boulevard
Hamilton, Ontario, L8R 3K6
Tel: 905-333-9119

Mechanical and Electrical Consultants
EXP
1266 S. Service Rd.
Stoney Creek, Ontario, L3E 5P9
Tel: 905-525-6069



Project North True North

No.	Revisions	Date
3	ISSUED FOR TENDER	2026/05/26
2	ISSUED FOR PERMIT	2026/05/11
1	ISSUED FOR REVIEW	2026/04/21
No.	Issue	Date

General Contractor shall check and verify all dimensions and report all errors and omissions to the Architect. Do not make the drawings. Drawings shall not be used for construction purposes until issued by the Architect for construction.

GENERAL NOTES

- A) MINIMUM PIPE SIZE TO BE 20mm (3/4") DIAMETER UNLESS OTHERWISE NOTED.
- B) ALL PIPING, VALVES AND EQUIPMENT SHALL BE CONCEALED UNLESS OTHERWISE NOTED.
- C) CO-ORDINATE PIPE RUNS WITH SHEETMETAL PLUMBING, SPRINKLER AND ELECTRICAL DIVISIONS.
- D) FOR EXACT LOCATION OF GRILLES AND DIFFUSERS REFER TO ARCHITECTURAL REFLECTED CEILING PLAN.
- E) ALL DUCTWORK AND EQUIPMENT TO BE CONCEALED IN CEILING SPACE UNLESS NOTED OTHERWISE.
- F) DUCT RUNOUTS TO MATCH GRILLE/DIFFUSER SIZE UNLESS OTHERWISE NOTED.
- G) DUCTWORK LOCATIONS TO BE FULLY CO-ORDINATED WITH GENERAL PLUMBING, SPRINKLER AND ELECTRICAL CONTRACTORS PRIOR TO FABRICATION OR INSTALLATION.
- H) FOR DRAWING LEGENDS SEE DRAWING M000.
- I) READ IN CONJUNCTION WITH SCHEMATICS AND DETAILS.

Drawing Title:

LEVEL 1 - MAIN ENTRANCE, DRAMA AND MUSIC, AND MECHANICAL ROOMS - PROPOSED HVAC PLAN

Scale: AS NOTED Date: 2026-04-02

Drawn by: CC Checked by: WD

Job No. ALL-22020201 Drawing No. M300

