

UNIT VENTILATOR SCHEDULE														Remarks							
Item	Type	Capacity (l/s)	Min. O.A. (ftm)	SP (in. wc)	Size (in)	Heating				Cooling		Electrical		Manufacturer	Model						
						Medium	Coil Flow	EWI (°F)	LWT (°F)	Capacity (MBH)	GPM	Medium	Total Cap Mtn				Sens. Cap Mtn	Voltage	MCA	MOCPP	
UV-1	HORIZONTAL UNIT VENTILATOR	2.5	1000	100	0.3	1/3	WATER	2	150	130	68.9	6.9	DX	33.2	24.9	120/180	6.3	15	DAIKIN	UAVS9-H10	ECM MOTOR, FACE & BYPASS HEATING COIL, 3-WAY VALVE AT HEATING COIL, DX COIL WITH TXV BYPASS (TO SUIT HEAT PUMP OPERATION), 250MM INSULATED REAR CHASE, DIGITAL READY CONTROLS PACKAGE, REAR OR INTAKE DUCT COLLAR, DUCT SLEEVE, TWO (2) FULL-DEPTH END PANELS (CUT-OUTS TO BE COMPLETED ON SITE TO SUIT DRAFT/STOP/DOWNDRAFT PROTECTION FEATURE & PIPING TUNNEL), CW MOUNTING HARDWARE & KICKPLATE (CONFORM CUT-OUTS WITH MANUFACTURER), BOTTOM FRONT RA INLET GRILLE & DRAFT/STOP/DOWNDRAFT PROTECTION RA INLET, UNIT MOUNTED DISCONNECT (INSIDE ENCLOSURE), HEATING COIL FREEZESTAT (FACTORY INSTALLED & WIRED), ADJUSTABLE LEG LEVELERS, PUTTY BEIGE CABINET COLOUR, TAMPER-RESISTANT FASTENERS ON ALL ACCESS DOORS, REPLACEMENT FILTERS, SECONDARY OVERFLOW DRAIN CONNECTION FOR CONDENSATE PAN, ADJUSTABLE 50mm IMSE TO RAISE UNIT, SET FAN TO MEDIUM SPEED, PROVIDE A DECORATIVE EXTERIOR ALUMINUM WALL GRILLE CONSTRUCTION OF HEAVY GAUGE ALUMINUM W/ RECTANGULAR PUNCHED HOLES TO MATCH LOUVER BLADES SPACING (2" LOUVER BLADE SPACING) TO MAXIMIZE THE AIR OPENING, PROVIDE EXTENDED BASE TO ENSURE TOP OF UNIT VENTILATOR IS FLUSH WITH TOP OF ADJACENT MILLWORK.
UV-2	HORIZONTAL UNIT VENTILATOR	2.5	1000	100	0.3	1/3	WATER	2	150	130	68.9	6.9	DX	33.2	24.9	120/180	6.3	15	DAIKIN	UAVS9-H10	
UV-3	HORIZONTAL UNIT VENTILATOR	2.5	1000	100	0.3	1/3	WATER	2	150	130	68.9	6.9	DX	33.2	24.9	120/180	6.3	15	DAIKIN	UAVS9-H10	
UV-4	HORIZONTAL UNIT VENTILATOR	2.5	1000	100	0.3	1/3	WATER	2	150	130	68.9	6.9	DX	33.2	24.9	120/180	6.3	15	DAIKIN	UAVS9-H10	
UV-5	HORIZONTAL UNIT VENTILATOR	2.5	1000	100	0.3	1/3	WATER	2	150	130	68.9	6.9	DX	33.2	24.9	120/180	6.3	15	DAIKIN	UAVS9-H10	
UV-6	HORIZONTAL UNIT VENTILATOR	2.5	1000	100	0.3	1/3	WATER	2	150	130	68.9	6.9	DX	33.2	24.9	120/180	6.3	15	DAIKIN	UAVS9-H10	
UV-7	HORIZONTAL UNIT VENTILATOR	2.5	1000	100	0.3	1/3	WATER	2	150	130	68.9	6.9	DX	33.2	24.9	120/180	6.3	15	DAIKIN	UAVS9-H10	
UV-8	HORIZONTAL UNIT VENTILATOR	2.5	1000	100	0.3	1/3	WATER	2	150	130	68.9	6.9	DX	33.2	24.9	120/180	6.3	15	DAIKIN	UAVS9-H10	
UV-9	CEILING UNIT VENTILATOR	2.5	1000	100	0.75	1/3	WATER	2	150	130	69.9	6.9	DX	30.4	20.3	120/180	6.3	15	DAIKIN	UAHFH-K10	ECM MOTOR, FACE & BYPASS HEATING COIL, 3-WAY VALVE AT HEATING COIL, DX COIL WITH TXV BYPASS (TO SUIT HEAT PUMP OPERATION), INTEGRAL CONDENSATE PUMP, DIGITAL READY CONTROLS PACKAGE, TOP OR INTAKE DUCT COLLAR, DUCT SLEEVE, CW MOUNTING HARDWARE FRONT RA INLET GRILLE, UNIT MOUNTED DISCONNECT (INSIDE ENCLOSURE), HEATING COIL FREEZESTAT (FACTORY INSTALLED & WIRED), PUTTY BEIGE CABINET COLOUR, TAMPER-RESISTANT FASTENERS ON ALL ACCESS DOORS, REPLACEMENT FILTERS, SECONDARY OVERFLOW DRAIN CONNECTION FOR CONDENSATE PAN, SET FAN TO MEDIUM SPEED.
UV-10	CEILING UNIT VENTILATOR	2.5	1000	100	0.75	1/3	WATER	2	150	130	69.9	6.9	DX	30.4	20.3	120/180	6.3	15	DAIKIN	UAHFH-K10	
UV-11	CEILING UNIT VENTILATOR	2.5	1000	100	0.75	1/3	WATER	2	150	130	69.9	6.9	DX	30.4	20.3	120/180	6.3	15	DAIKIN	UAHFH-K10	
UV-12	CEILING UNIT VENTILATOR	2.5	1000	100	0.75	1/3	WATER	2	150	130	69.9	6.9	DX	30.4	20.3	120/180	6.3	15	DAIKIN	UAHFH-K10	
UV-13	CEILING UNIT VENTILATOR	2.5	1000	100	0.75	1/3	WATER	2	150	130	69.9	6.9	DX	30.4	20.3	120/180	6.3	15	DAIKIN	UAHFH-K10	
UV-14	CEILING UNIT VENTILATOR	2.5	1000	100	0.75	1/3	WATER	2	150	130	69.9	6.9	DX	30.4	20.3	120/180	6.3	15	DAIKIN	UAHFH-K10	

* ACCEPTABLE MANUFACTURERS: DAIKIN, TRANE, ENGINEERED AIR
 NOTE: CONTRACTOR RESPONSIBLE TO PROVIDE TEMPORARY HEAT IN ROOMS (TO SATISFACTION OF OWNER & CONSULTANT) IF UNIT VENTILATORS ARE NOT INSTALLED IN TIME FOR HEATING SEASON. EXISTING UNITS CAN REMAIN IN PLACE UNTIL NEW UNITS DELIVERED TO SITE.
 SHOP DRAWING SUBMISSION/UNIT DELIVERY REQUIREMENTS
 - SHOP DRAWINGS SHALL BE SUBMITTED TO THE CONSULTANT WITHIN ONE (1) WEEK OF AWARD OF CONTRACT.
 - SHOP DRAWINGS SHALL BE REVIEWED/RETURNED BY THE CONSULTANT WITHIN ONE (1) WEEK OF SUBMISSION.
 - CONTRACTOR TO ORDER EQUIPMENT FROM MANUFACTURER IMMEDIATELY UPON RETURNED/APPROVED SHOP DRAWINGS.

AIR COOLED (HEAT PUMP) CONDENSING UNIT SCHEDULE														Remarks		
Item	Type	Tons	Capacity (MBH)	Compressor			Refrig.	S&L Substn Temp (°F)	No. of Cond. Engs	Electrical			Unit Weight (lbs)	Manufacturer	Model	
				Type	No.	No. Stages				Voltage	MCA	MOCPP				
CU-1	OUTDOOR ROOF MOUNTED	2.5	30	SCROLL	1	1	R32	52	1	208/180	17	25	250±	DAIKIN	DH4SEA3010	PROVIDE CONTINUOUS SUPPORT AS PER DETAIL. CONNECT TO UV-1.
CU-2	OUTDOOR ROOF MOUNTED	2.5	30	SCROLL	1	1	R32	52	1	208/180	17	25	250±	DAIKIN	DH4SEA3010	PROVIDE CONTINUOUS SUPPORT AS PER DETAIL. CONNECT TO UV-2.
CU-3	OUTDOOR ROOF MOUNTED	2.5	30	SCROLL	1	1	R32	52	1	208/180	17	25	250±	DAIKIN	DH4SEA3010	PROVIDE CONTINUOUS SUPPORT AS PER DETAIL. CONNECT TO UV-3.
CU-4	OUTDOOR ROOF MOUNTED	2.5	30	SCROLL	1	1	R32	52	1	208/180	17	25	250±	DAIKIN	DH4SEA3010	PROVIDE CONTINUOUS SUPPORT AS PER DETAIL. CONNECT TO UV-4.
CU-5	OUTDOOR ROOF MOUNTED	2.5	30	SCROLL	1	1	R32	52	1	208/180	17	25	250±	DAIKIN	DH4SEA3010	PROVIDE CONTINUOUS SUPPORT AS PER DETAIL. CONNECT TO UV-5.
CU-6	OUTDOOR ROOF MOUNTED	2.5	30	SCROLL	1	1	R32	52	1	208/180	17	25	250±	DAIKIN	DH4SEA3010	PROVIDE CONTINUOUS SUPPORT AS PER DETAIL. CONNECT TO UV-6.
CU-7	OUTDOOR ROOF MOUNTED	2.5	30	SCROLL	1	1	R32	52	1	208/180	17	25	250±	DAIKIN	DH4SEA3010	PROVIDE CONTINUOUS SUPPORT AS PER DETAIL. CONNECT TO UV-7.
CU-8	OUTDOOR ROOF MOUNTED	2.5	30	SCROLL	1	1	R32	52	1	208/180	17	25	250±	DAIKIN	DH4SEA3010	PROVIDE CONTINUOUS SUPPORT AS PER DETAIL. CONNECT TO UV-8.
CU-9	OUTDOOR ROOF MOUNTED	2.5	30	SCROLL	1	1	R32	52	1	208/180	17	25	250±	DAIKIN	DH4SEA3010	PROVIDE CONTINUOUS SUPPORT AS PER DETAIL. CONNECT TO UV-9.
CU-10	OUTDOOR ROOF MOUNTED	2.5	30	SCROLL	1	1	R32	52	1	208/180	17	25	250±	DAIKIN	DH4SEA3010	PROVIDE CONTINUOUS SUPPORT AS PER DETAIL. CONNECT TO UV-10.
CU-11	OUTDOOR ROOF MOUNTED	2.5	30	SCROLL	1	1	R32	52	1	208/180	17	25	250±	DAIKIN	DH4SEA3010	PROVIDE CONTINUOUS SUPPORT AS PER DETAIL. CONNECT TO UV-11.
CU-12	OUTDOOR ROOF MOUNTED	2.5	30	SCROLL	1	1	R32	52	1	208/180	17	25	250±	DAIKIN	DH4SEA3010	PROVIDE CONTINUOUS SUPPORT AS PER DETAIL. CONNECT TO UV-12.
CU-13	OUTDOOR ROOF MOUNTED	2.5	30	SCROLL	1	1	R32	52	1	208/180	17	25	250±	DAIKIN	DH4SEA3010	PROVIDE CONTINUOUS SUPPORT AS PER DETAIL. CONNECT TO UV-13.
CU-14	OUTDOOR ROOF MOUNTED	2.5	30	SCROLL	1	1	R32	52	1	208/180	17	25	250±	DAIKIN	DH4SEA3010	PROVIDE CONTINUOUS SUPPORT AS PER DETAIL. CONNECT TO UV-14.
CU-15	OUTDOOR ROOF MOUNTED	1.5	18	SCROLL	1	1	R32	52	1	208/180	20	30	160±	LG	LUU188HV	PROVIDE CONTINUOUS SUPPORT AS PER DETAIL.
CU-16	OUTDOOR ROOF MOUNTED	1.0	12	SCROLL	1	1	R32	52	1	208/180	12	15	70±	LG	KUSAB121A	PROVIDE CONTINUOUS SUPPORT AS PER DETAIL.

* ACCEPTABLE MANUFACTURERS: DAIKIN, TRANE, MITSUBISHI, LG
 SHOP DRAWING SUBMISSION/UNIT DELIVERY REQUIREMENTS
 - SHOP DRAWINGS SHALL BE SUBMITTED TO THE CONSULTANT WITHIN ONE (1) WEEK OF AWARD OF CONTRACT.
 - SHOP DRAWINGS SHALL BE REVIEWED/RETURNED BY THE CONSULTANT WITHIN ONE (1) WEEK OF SUBMISSION.
 - CONTRACTOR TO ORDER EQUIPMENT FROM MANUFACTURER IMMEDIATELY UPON RETURNED/APPROVED SHOP DRAWINGS.

GRILLE SCHEDULE					CAPACITY INDICATED ON SCHEDULE REFER TO SPECIFICATION FOR CONSTRUCTION STANDARDS, ACCESSORIES AND ADDITIONAL INFORMATION.	
Item	Type	Equalizing Grid	Volume Dampener	Acceptable Manufacturer	Description	
R1	CEILING RETURN GRILLE (NON-DUCTED)	NO	NONE	EH PRICE	80-CH	1/2x12x12 ALUMINUM EGGRATE CORE, CW CHANNEL BORDER FOR LAY-IN T-BAR CEILING.

GENERAL GRILLE SCHEDULE NOTES:
 1. ACCEPTABLE MANUFACTURERS: EH PRICE, NAILOR, TITUS, KRUEGER, CARNES, METALAIR, TUTTLE & BAILEY.
 2. GRILLE COLOURS ARE SELECTED BY ARCHITECT FROM STANDARD COLOUR CHART, UNLESS OTHERWISE NOTED.
 3. PAINT INTERIOR OF DUCTWORK BEHIND GRILLE MATTE BLACK (WHERE VISIBLE THRU GRILLE).

SPLIT AIR CONDITIONING UNIT SCHEDULE										Remarks	
Item	Capacity (Tons)	Refrig.	Unit Weight (lbs)	Max. O.A. (ftm)	MCA	MOCPP	Voltage	Manufacturer	Model		
DS-1	1.5	R32	55±	60	1	15	208/180	LG LCN188RH4		INTERLOCK TO CU-15. PROVIDE POWER FROM CU-15. CW PT-UMCI GRILLE, PTDCQ COVER, PTVK410+420 VENTILATION KIT & CONDENSATE PUMP	
DS-2	1.0	R32	20±	280	1	15	208/180	LG KNUAB121A		INTERLOCK TO CU-16. PROVIDE POWER FROM CU-16. CW INTEGRAL CONDENSATE PUMP & LOW AMBIENT OPERATOR.	

* ACCEPTABLE MANUFACTURERS: DAIKIN, TRANE, MITSUBISHI, LG
 SHOP DRAWING SUBMISSION/UNIT DELIVERY REQUIREMENTS
 - SHOP DRAWINGS SHALL BE SUBMITTED TO THE CONSULTANT WITHIN ONE (1) WEEK OF AWARD OF CONTRACT.
 - SHOP DRAWINGS SHALL BE REVIEWED/RETURNED BY THE CONSULTANT WITHIN ONE (1) WEEK OF SUBMISSION.
 - CONTRACTOR TO ORDER EQUIPMENT FROM MANUFACTURER IMMEDIATELY UPON RETURNED/APPROVED SHOP DRAWINGS.

FAN SCHEDULE										CAPACITY INDICATED ON SCHEDULE REFER TO SPECIFICATION FOR CONSTRUCTION STANDARDS, ACCESSORIES AND ADDITIONAL INFORMATION.	
Item	Type	Capacity (cfm)	ESP (in wc)	Fan Speed (rpm)	Motor		Acceptable Manufacturer	Remarks			
					hp	Voltage					
EF-10	ROOF EXHAUST FAN	300	0.375"	925	1/4	120/180	PENN BARRY DX08B	SPUN ALUMINUM MOTOR COVER & FAN SHROUD, DOWN DISCHARGE, WIBELT DRIVE CENTRIFUGAL BACKWARD INCLINED FAN, GALV BIRD SCREEN, 24" HIGH INSULATED ROOF CURB, EXHAUST FAN NUMBER TO BE NEXT AVAILABLE NUMBER. CO-ORDINATE WITH BAS CONTRACTOR.			

GENERAL FAN SCHEDULE NOTES:
 1. ACCEPTABLE MANUFACTURERS: GREENHECK, PENN-BARRY, COOK, CARNES, ACME, TWIN CITY, JENCO, BUFFALO (CEILING FANS: BROAD, GREENHECK, ZONEX)
 2. PROVIDE 24" TALL PREFABRICATED, INSULATED ROOF CURB FOR ALL ROOF MOUNTED FANS.

MECHANICAL LEGEND					
Item	Description	Item	Description	Item	Description
-----	ITEM TO BE REMOVED	FD	FLOOR DRAIN	====>	TURNING VANES
+	CUT EXISTING & CONNECT NEW PIPING	TRAP PRIMER	TRAP PRIMER	---	SUPPLY AIR DUCT
→	FLOW DIRECTION	TEE CONNECTION	TEE CONNECTION	---	RETURN/EXHAUST AIR DUCT
---	POTABLE COLD WATER	PIPE DOWN	PIPE DOWN	---	ACOUSTIC DUCT LINING
---	POTABLE HOT WATER	PIPE UP	PIPE UP	---	THERMAL INSULATION
---	POTABLE HOT WATER REDUC.	REDUCER/INCREASER	REDUCER/INCREASER	---	BRANCH LINE SPIN-IN COLLAR CW BALANCING DAMPER
---	SAN-EX - EXISTING SAN ABOVE FLOOR	UNION	UNION	---	BALANCING DAMPER
---	SAN-EX - EXISTING SAN BELOW FLOOR	STRAINER	STRAINER	---	OPPOSED BLADE DAMPER
---	SAN - SANITARY ABOVE FLOOR	DRAIN (SCHEMATIC)	DRAIN (SCHEMATIC)	---	MOTORIZED DAMPER
---	SAN - SANITARY BELOW FLOOR	SCREWED OR WELDED PIPE CAP	SCREWED OR WELDED PIPE CAP	---	FIRE DAMPER
---STM-EX---	EXISTING STM ABOVE FLOOR	BALL VALVE	BALL VALVE	---	RECTANGULAR DUCTWORK
---STM-EX---	EXISTING STM BELOW FLOOR	DIAPHRAGM VALVE	DIAPHRAGM VALVE	---	RIGID ROUND DUCT
---STM---	STORM ABOVE FLOOR	VALVE ON RISER	VALVE ON RISER	---	FLEXIBLE ROUND DUCT
---STM---	STORM BELOW FLOOR	BV	BALANCING VALVE	---	DIFFUSER/GRILLE SIZE (imp), TYPE & CAPACITY (cfm)
---CD---	CONDENSATE DRAIN	TCV	2-WAY TEMPERATURE CONTROL VALVE	---	HYDRONIC HEATING SIZE, TYPE & CAPACITY
---	VENT	TCV	3-WAY TEMPERATURE CONTROL VALVE	---	ACCESS DOOR
---	SPRINKLER	FEC	RECESSED CABINET MOUNTED FIRE EXTINGUISHER	---	EXP
---	HEATING WATER SUPPLY	FE	WALL MOUNTED FIRE EXTINGUISHER	---	EXPANSION JOINT
---	HEATING WATER RETURN	CD	FLOOR CLEANOUT	---	RIC
---	REFRIGERANT LIQUID	CO	LINE CLEANOUT	---	AFR
---	REFRIGERANT SUCTION	CS	THERMOSTAT (CONCEALED SENSOR)	---	EXISTING DUCT (SIZE AS INDICATED)
---	CONDENSATE PUMP	CP	THERMOSTAT (WITH GUARD WHERE INDICATED)	---	TRANSFER DUCT (SIZE AS INDICATED)
			CS	---	CO2 SENSOR (WITH GUARD WHERE INDICATED)

LOUVERED PENTHOUSE SCHEDULE							CAPACITY INDICATED ON SCHEDULE REFER TO SPECIFICATION FOR CONSTRUCTION STANDARDS, ACCESSORIES AND ADDITIONAL INFORMATION.	
Item	Type	Airflow (cfm)	Throat (in)	Height (in)	Acceptable Manufacturer & Model	Remarks		
PH-1	EXHAUST	800	28x16	16	VENTEX PH2425B	MITRED CORNERS, STORMPROOF BLADES. PROVIDE ROOF CURB HEIGHT SUCH THAT BOTTOM LOUVER IS 36" AFR		
PH-2	EXHAUST	800	28x16	16	VENTEX PH2425B	MITRED CORNERS, STORMPROOF BLADES. PROVIDE ROOF CURB HEIGHT SUCH THAT BOTTOM LOUVER IS 36" AFR		
PH-3	EXHAUST	800	28x16	16	VENTEX PH2425B	MITRED CORNERS, STORMPROOF BLADES. PROVIDE ROOF CURB HEIGHT SUCH THAT BOTTOM LOUVER IS 36" AFR		
PH-4	EXHAUST	800	28x16	16	VENTEX PH2425B	MITRED CORNERS, STORMPROOF BLADES. PROVIDE ROOF CURB HEIGHT SUCH THAT BOTTOM LOUVER IS 36" AFR		
PH-5	EXHAUST	800	28x16	16	VENTEX PH2425B	MITRED CORNERS, STORMPROOF BLADES. PROVIDE ROOF CURB HEIGHT SUCH THAT BOTTOM LOUVER IS 36" AFR		
PH-6	EXHAUST	800	28x16	16	VENTEX PH2425B	MITRED CORNERS, STORMPROOF BLADES. PROVIDE ROOF CURB HEIGHT SUCH THAT BOTTOM LOUVER IS 36" AFR		
PH-7	EXHAUST	800	28x16	16	VENTEX PH2425B	MITRED CORNERS, STORMPROOF BLADES. PROVIDE ROOF CURB HEIGHT SUCH THAT BOTTOM LOUVER IS 36" AFR		
PH-8	EXHAUST	800	28x16	16	VENTEX PH2425B	MITRED CORNERS, STORMPROOF BLADES. PROVIDE ROOF CURB HEIGHT SUCH THAT BOTTOM LOUVER IS 36" AFR		
PH-9	EXHAUST	800	28x16	16	VENTEX PH2425B	MITRED CORNERS, STORMPROOF BLADES. PROVIDE ROOF CURB HEIGHT SUCH THAT BOTTOM LOUVER IS 36" AFR		
PH-10	EXHAUST	800	28x16	16	VENTEX PH2425B	MITRED CORNERS, STORMPROOF BLADES. PROVIDE ROOF CURB HEIGHT SUCH THAT BOTTOM LOUVER IS 36" AFR		
PH-11	EXHAUST	800	28x16	16	VENTEX PH2425B	MITRED CORNERS, STORMPROOF BLADES. PROVIDE ROOF CURB HEIGHT SUCH THAT BOTTOM LOUVER IS 36" AFR		
PH-12	EXHAUST	800	28x16	16	VENTEX PH2425B	MITRED CORNERS, STORMPROOF BLADES. PROVIDE ROOF CURB HEIGHT SUCH THAT BOTTOM LOUVER IS 36" AFR		
PH-13	EXHAUST	800	28x16	16	VENTEX PH2425B	MITRED CORNERS, STORMPROOF BLADES. PROVIDE ROOF CURB HEIGHT SUCH THAT BOTTOM LOUVER IS 36" AFR		
PH-14	EXHAUST	800	28x16	16	VENTEX PH2425B	MITRED CORNERS, STORMPROOF BLADES. PROVIDE ROOF CURB HEIGHT SUCH THAT BOTTOM LOUVER IS 36" AFR		

NOTE:
 • CONTRACTOR RESPONSIBLE TO PROVIDE TEMPORARY HEAT IN ROOMS (TO SATISFACTION OF OWNER & CONSULTANT) IF UNIT VENTILATORS ARE NOT INSTALLED IN TIME FOR HEATING SEASON. EXISTING UNITS CAN REMAIN IN PLACE UNTIL NEW UNITS DELIVERED TO SITE.

GENERAL DEMOLITION NOTES

- A. EXISTING MECHANICAL ITEMS NOT SHOWN SHALL REMAIN UNLESS NOTED OTHERWISE.
- B. EXISTING MECHANICAL ITEMS SHOWN BUT NOT NOTED AS BEING REMOVED OR RENOVATED SHALL REMAIN AS PRESENTLY INSTALLED AND OPERATING.
- C. THIS CONTRACTOR SHALL BE RESPONSIBLE FOR VERIFYING ON SITE ALL LOCATIONS AND SIZES OF ALL SERVICES & EQUIPMENT PRIOR TO THE COMMENCEMENT OF WORK.
- D. ALL OPENINGS THAT RESULT FROM THE REMOVAL OF EQUIPMENT OR SERVICES SHALL BE NEATLY PATCHED WITH SUITABLE NEW MATERIALS TO SUIT EXISTING CONSTRUCTION.
- E. PLUMBING VENTS ARE NOT INDICATED OR IDENTIFIED. REMOVE ALL REDUNDANT VENTS WHILE MAINTAINING INTEGRITY OF EXISTING SYSTEMS TO REMAIN.
- F. REMOVAL OF EXISTING PIPING, OR DUCT SYSTEMS INCLUDES REMOVAL OF ALL HANGERS, INSULATION, FITTINGS, ETC.
- G. MAINTAIN INTEGRITY OF EXISTING SYSTEMS THAT ARE TO REMAIN OR BE MODIFIED.
- H. INSTALL NEW SYSTEM OR SERVICES WHERE REQUIRED TO MAINTAIN SYSTEM OPERATION PRIOR TO DEMOLITION OF EXISTING SERVICES.
- I. THIS CONTRACTOR IS TO REMOVE & REPLACE CEILING AS REQUIRED FOR REMOVAL/REPLACEMENT OF SERVICES.

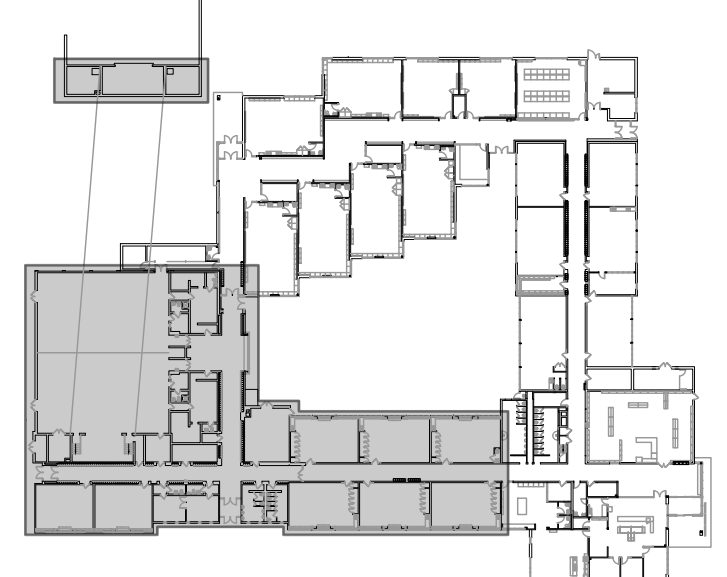
SPECIFIC DEMOLITION NOTES

- 1. EXISTING PNEUMATIC THERMOSTAT/SENSOR TO BE REMOVED COMPLETE. REMOVE WIRING/TUBING BACK TO SOURCE. EXISTING PNEUMATIC TUBING TO BE SOLDERED/CRIMPED IN CONCEALED LOCATION.
- 2. EXISTING ISOLATING, BALANCING AND PNEUMATIC THERMOSTAT CONTROL VALVES TO BE REMOVED AND REPLACE WITH NEW. EXISTING PNEUMATIC TUBING TO BE SOLDERED/CRIMPED IN CONCEALED LOCATION.
- 3. EXISTING UNIT VENTILATOR TO BE REMOVED COMPLETE. EXISTING PIPING TO BE CUT & PREPARED FOR CONNECTION TO NEW UV.
- 4. EXISTING LOUVER & WALL SLEEVE TO BE REMOVED COMPLETE. PREPARE OPENING FOR NEW LOUVER.
- 5. EXISTING DUCTWORK TO BE CUT AND REMOVED BEYOND COMPLETE.
- 6. EXISTING DUCTWORK AND INTAKE PENTHOUSE TO BE REMOVED BEYOND COMPLETE.
- 7. EXISTING PNEUMATIC DAMPER ACTUATORS TO BE REMOVED COMPLETE. REMOVE WIRING/TUBING BACK TO SOURCE. EXISTING PNEUMATIC TUBING TO BE SOLDERED/CRIMPED IN CONCEALED LOCATION.
- 8. EXISTING ISOLATION AND BALANCING VALVES TO BE REMOVED AND REPLACED WITH NEW.
- 9. EXISTING GRILLE TO BE REMOVED COMPLETE.
- 10. EXISTING DUCTWORK TO BE REMOVED COMPLETE.
- 11. EXISTING UNIT HEATER TO BE REMOVED COMPLETE.
- 12. EXISTING HWS/HWR PIPING TO BE CUT AND REMOVED BEYOND COMPLETE.
- 13. PROVIDE NEW BAS PROGRAMMING FOR EXISTING EQUIPMENT.

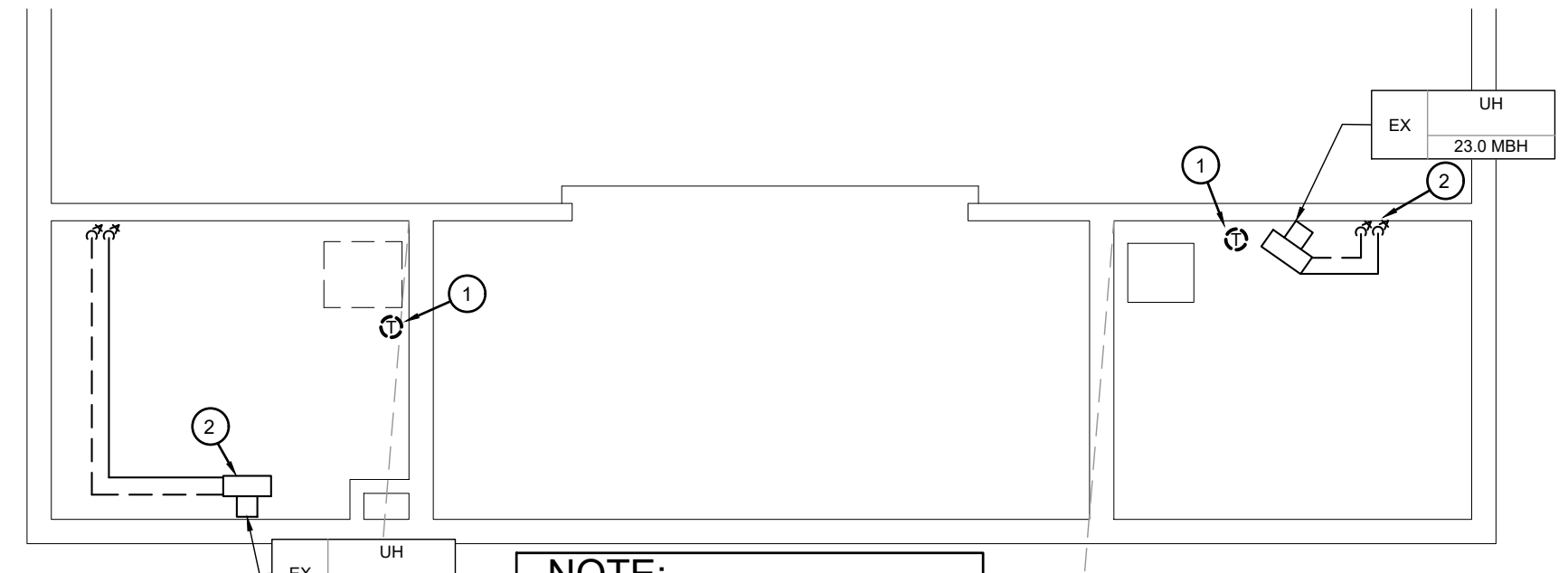
The contractor shall verify all dimensions and report all errors and discrepancies to the Consultant before commencement of the work.
 The drawings show general arrangement of services. Follow as closely as actual building construction will permit. Obtain approval for relocation of service from Consultant before commencement of the work.
 The drawings do not indicate all offsets fitting and accessories which may be required. Provide the same to meet the required conditions.
 Drawings and specifications, etc., prepared and issued by the Consultant are the property of the Consultant and must be returned at the completion of the project. These documents are not to be duplicated or copied without the consent of the Consultant.
 Do not scale this drawing.
 © 2026 DEI Consulting Engineers Inc.



55 Northland Road, Waterloo, ON N2V 1Y8
 Phone: 519-735-3555
 Website: deiassociates.ca
 Project Number: 25384

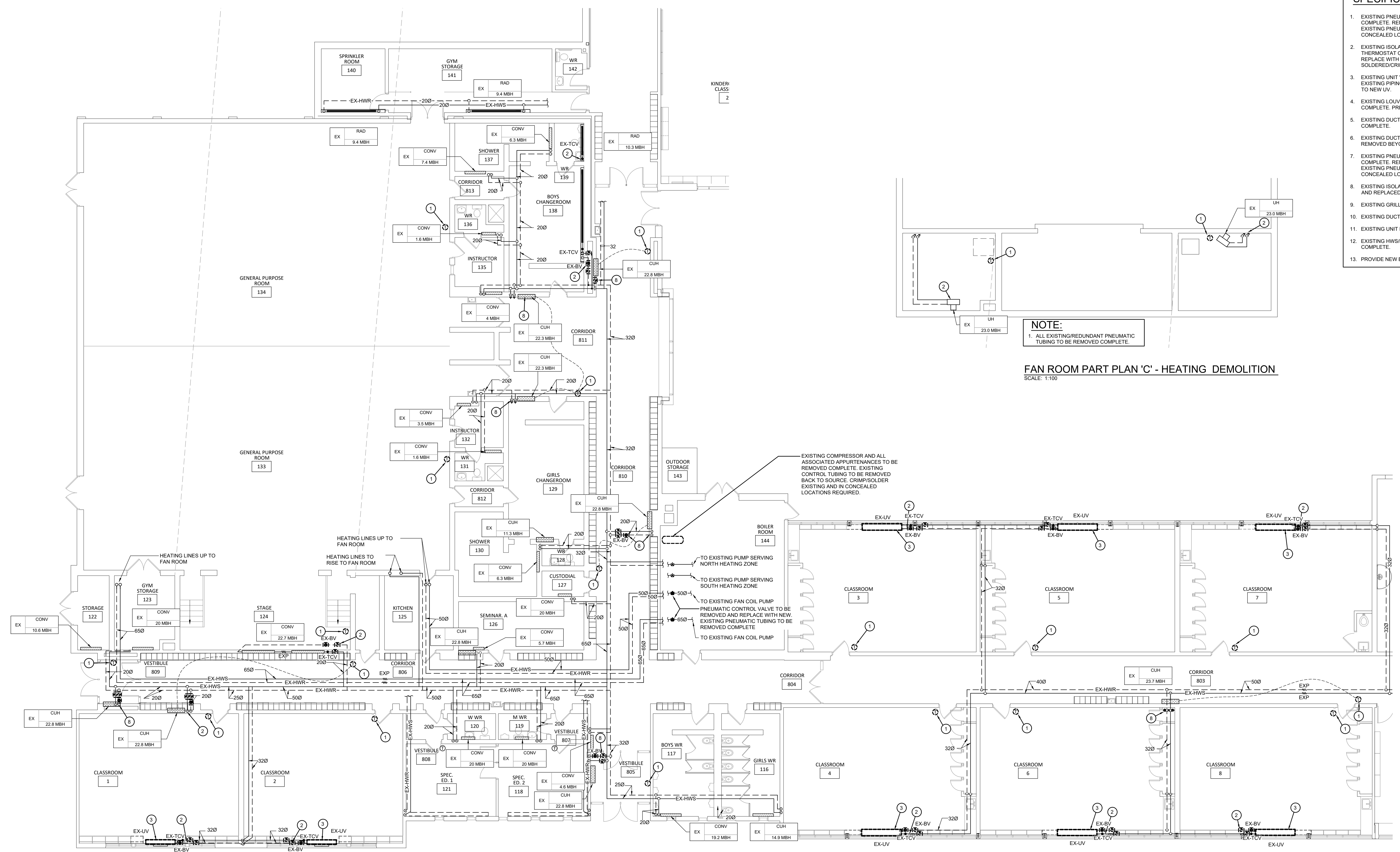


Key Plan



NOTE:
 1. ALL EXISTING REDUNDANT PNEUMATIC TUBING TO BE REMOVED COMPLETE.

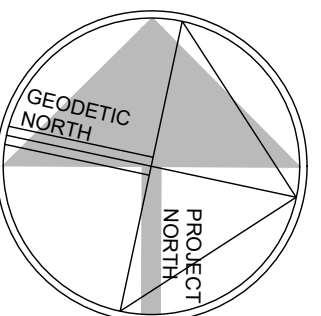
FAN ROOM PART PLAN 'C' - HEATING DEMOLITION
 SCALE: 1:100



GROUND FLOOR PART PLAN 'A' - HEATING DEMOLITION
 SCALE: 1:100

NOTE: THIS DRAWING IS NOT TO BE SCALED. THE CONTRACTOR IS RESPONSIBLE FOR THE VERIFICATION OF ALL SITE DIMENSIONS AND FOR NOTIFYING THE ARCHITECT OF ANY SITE CONDITIONS AND SITE MEASUREMENTS THAT ARE NOT CONSISTENT WITH THE DRAWINGS.

no.	revision	date



no.	issue	date
1	Issued for Permit & Tender	2026.04.02

project
 WATERLOO REGION DISTRICT SCHOOL BOARD
 BRESLAU PUBLIC SCHOOL
 HVAC AND CLASSROOM RENOVATIONS
 58 JOSEPH STREET, BRESLAU, ON N0B 1M0

drawing
 GROUND FLOOR PART PLAN 'A' & 'C' - HEATING DEMOLITION

AS NOTED
 ward99 project number
 25018 - BRESLAU PS WRDSB

ward99 architects
 drawing no.
M2.1

ward99 architects inc.
 7811 Pine Valley Dr. Unit 11
 Woodbridge, ON L4L 0A2
 info@ward99.com
 416 613 5800 www.ward99.com

NOTE:
 • CONTRACTOR RESPONSIBLE TO PROVIDE TEMPORARY HEAT IN ROOMS (TO SATISFACTION OF OWNER & CONSULTANT) IF UNIT VENTILATORS ARE NOT INSTALLED IN TIME FOR HEATING SEASON. EXISTING UNITS CAN REMAIN IN PLACE UNTIL NEW UNITS DELIVERED TO SITE.

GENERAL DEMOLITION NOTES

- A. EXISTING MECHANICAL ITEMS NOT SHOWN SHALL REMAIN UNLESS NOTED OTHERWISE.
- B. EXISTING MECHANICAL ITEMS SHOWN BUT NOT NOTED AS BEING REMOVED OR RENOVATED SHALL REMAIN AS PRESENTLY INSTALLED AND OPERATING.
- C. THIS CONTRACTOR SHALL BE RESPONSIBLE FOR VERIFYING ON SITE ALL LOCATIONS AND SIZES OF ALL SERVICES & EQUIPMENT PRIOR TO THE COMMENCEMENT OF WORK.
- D. ALL OPENINGS THAT RESULT FROM THE REMOVAL OF EQUIPMENT OR SERVICES SHALL BE NEATLY PATCHED WITH SUITABLE NEW MATERIALS TO SUIT EXISTING CONSTRUCTION.
- E. PLUMBING VENTS ARE NOT INDICATED OR IDENTIFIED. REMOVE ALL REDUNDANT VENTS WHILE MAINTAINING INTEGRITY OF EXISTING SYSTEMS TO REMAIN.
- F. REMOVAL OF EXISTING PIPING, OR DUCT SYSTEMS INCLUDES REMOVAL OF ALL HANGERS, INSULATION, FITTINGS, ETC.
- G. MAINTAIN INTEGRITY OF EXISTING SYSTEMS THAT ARE TO REMAIN OR BE MODIFIED.
- H. INSTALL NEW SYSTEM OR SERVICES WHERE REQUIRED TO MAINTAIN SYSTEM OPERATION PRIOR TO DEMOLITION OF EXISTING SERVICES.
- I. THIS CONTRACTOR IS TO REMOVE & REPLACE CEILINGS AS REQUIRED FOR REMOVAL/REPLACEMENT OF SERVICES.

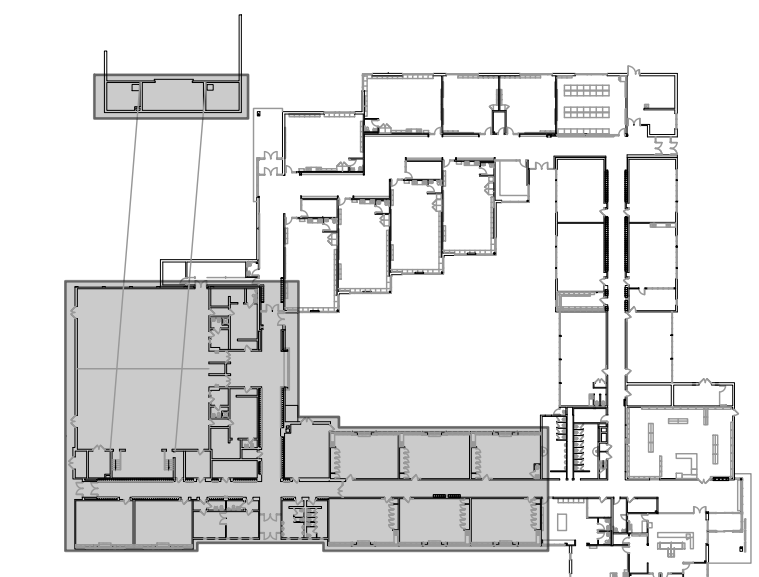
SPECIFIC DEMOLITION NOTES

- 1. EXISTING PNEUMATIC THERMOSTAT/SENSOR TO BE REMOVED COMPLETE. REMOVE WIRING/TUBING BACK TO SOURCE. EXISTING PNEUMATIC TUBING TO BE SOLDERED/CRIMPED IN CONCEALED LOCATION.
- 2. EXISTING ISOLATING, BALANCING AND PNEUMATIC THERMOSTAT CONTROL VALVES TO BE REMOVED AND REPLACE WITH NEW EXISTING PNEUMATIC TUBING TO BE SOLDERED/CRIMPED IN CONCEALED LOCATION.
- 3. EXISTING UNIT VENTILATOR TO BE REMOVED COMPLETE. EXISTING PIPING TO BE CUT & PREPARED FOR CONNECTION TO NEW UV.
- 4. EXISTING LOUVER & WALL SLEEVE TO BE REMOVED COMPLETE. PREPARE OPENING FOR NEW LOUVER.
- 5. EXISTING DUCTWORK TO BE CUT AND REMOVED BEYOND COMPLETE.
- 6. EXISTING DUCTWORK AND INTAKE PENTHOUSE TO BE REMOVED BEYOND COMPLETE.
- 7. EXISTING PNEUMATIC DAMPER ACTUATORS TO BE REMOVED COMPLETE. REMOVE WIRING/TUBING BACK TO SOURCE. EXISTING PNEUMATIC TUBING TO BE SOLDERED/CRIMPED IN CONCEALED LOCATION.
- 8. EXISTING ISOLATING AND BALANCING VALVES TO BE REMOVED AND REPLACED WITH NEW.
- 9. EXISTING GRILLE TO BE REMOVED COMPLETE.
- 10. EXISTING DUCTWORK TO BE REMOVED COMPLETE.
- 11. EXISTING UNIT HEATER TO BE REMOVED COMPLETE.
- 12. EXISTING HW/SHWR PIPING TO BE CUT AND REMOVED BEYOND COMPLETE.
- 13. PROVIDE NEW BAS PROGRAMMING FOR EXISTING EQUIPMENT.

The contractor shall verify all dimensions and report all errors and discrepancies to the Consultant before commencement of the work.
 The drawings show general arrangement of services. Follow as closely as actual building construction will permit. Obtain approval for relocation of service from Consultant before commencement of the work.
 The drawings do not indicate all offsets fitting and accessories which may be required. Provide the same to meet the required conditions.
 Drawings and specifications, etc., prepared and issued by the Consultant are the property of the Consultant and must be returned at the completion of the project. These documents are not to be duplicated or copied without the consent of the Consultant.
 Do not scale this drawing.
 © 2026 DEI Consulting Engineers Inc.



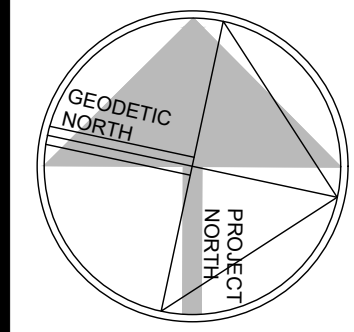
55 Northland Road, Waterloo, ON N2V 1Y8
 Phone: 519-735-3555
 Website: deiassociates.ca
 Project Number: 25384



Key Plan

NOTE: THIS DRAWING IS NOT TO BE SCALED. THE CONTRACTOR IS RESPONSIBLE FOR THE VERIFICATION OF ALL SITE DIMENSIONS AND FOR NOTIFYING THE ARCHITECT OF ANY SITE CONDITIONS AND SITE MEASUREMENTS THAT ARE NOT CONSISTENT WITH THE DRAWINGS.

no.	revision	date



no.	issue	date
1	Issued for Permit & Tender	2026.04.02

project
 WATERLOO REGION DISTRICT SCHOOL BOARD
 BRESLAU PUBLIC SCHOOL
 HVAC AND CLASSROOM RENOVATIONS
 58 JOSEPH STREET, BRESLAU, ON N0B 1M0

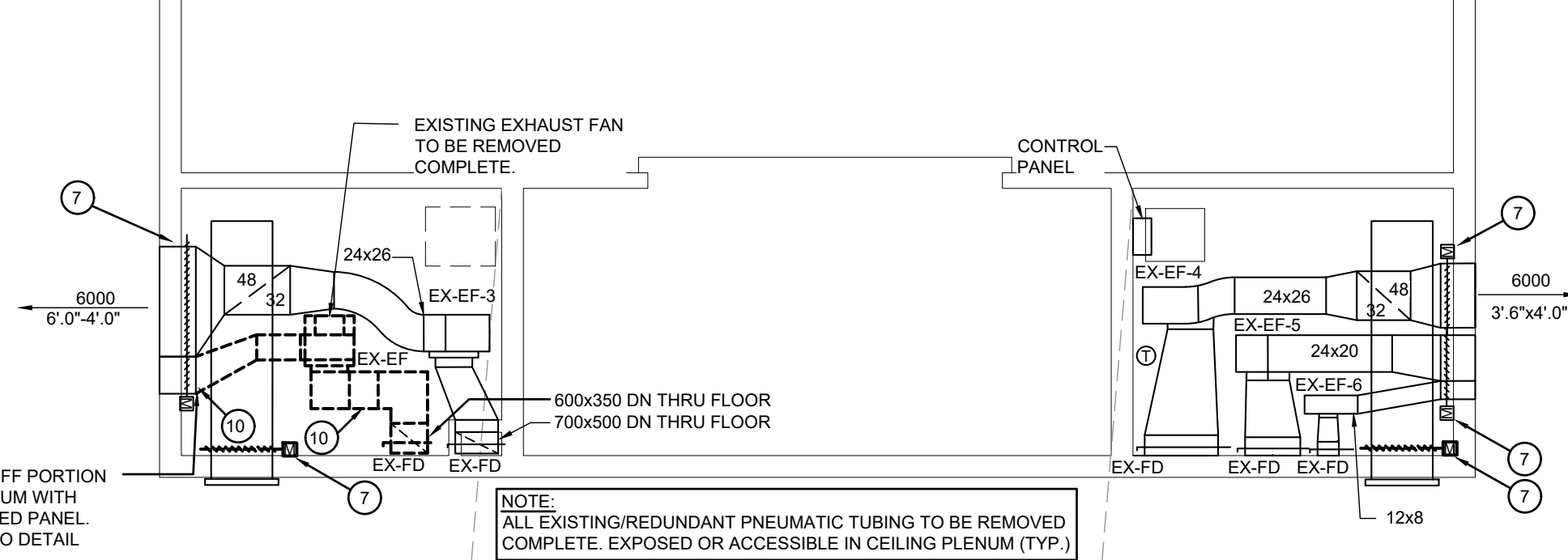
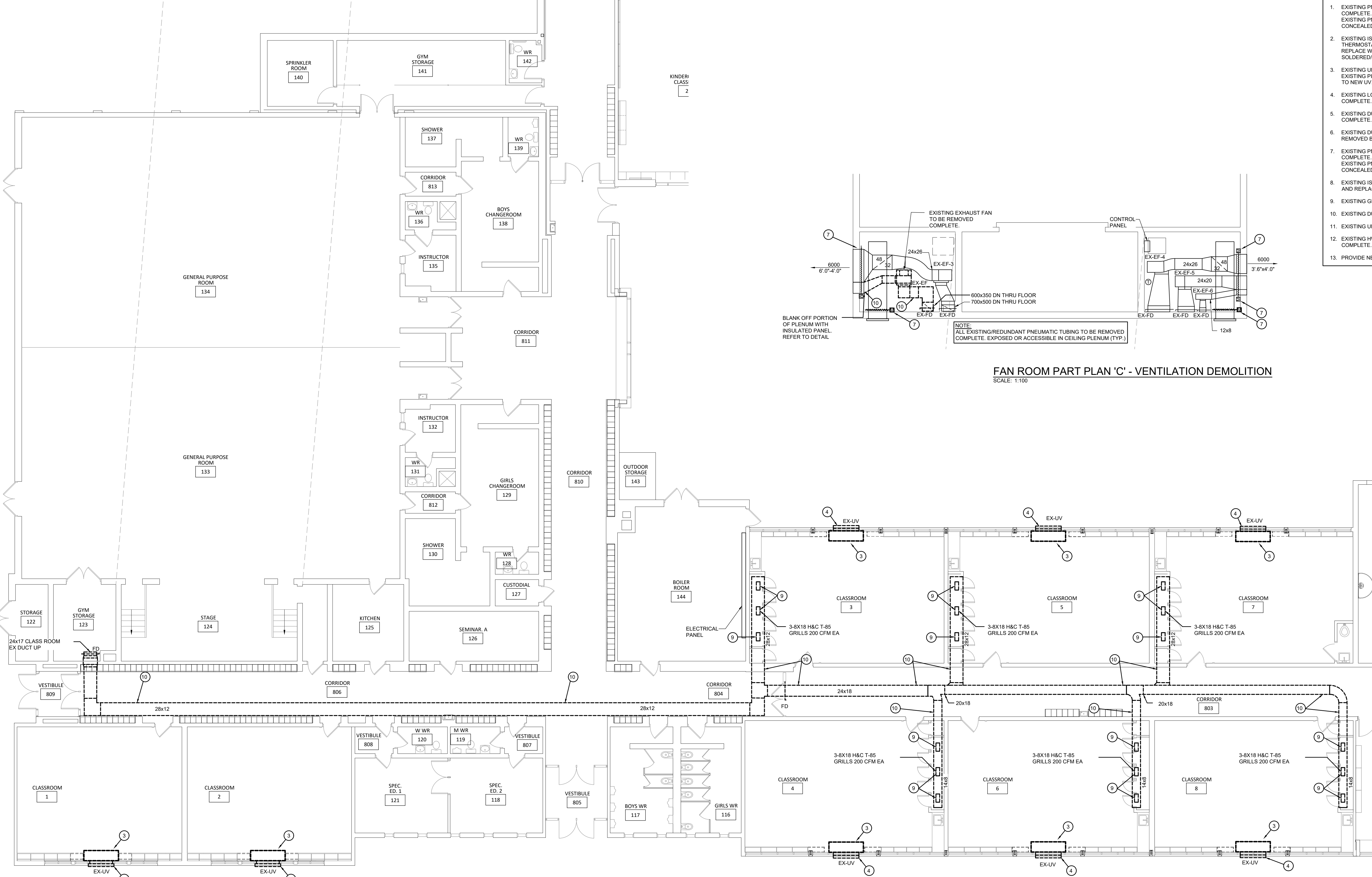
drawing
 GROUND FLOOR PART PLAN 'A' & 'C' - VENTILATION DEMOLITION
 drawing scale
 AS NOTED

ward99 project number
 25018 - BRESLAU PS WRDSB

ward99 architects

 drawing no.
M2.3

ward99 architects inc.
 7811 Pine Valley Dr. Unit 11
 Woodbridge, ON L4L0A2
 info@ward99architects.com
 416 613 5860 www.ward99architects.com



FAN ROOM PART PLAN 'C' - VENTILATION DEMOLITION
 SCALE: 1/100

GROUND FLOOR PART PLAN 'A' - VENTILATION DEMOLITION
 SCALE: 1/100

NOTE:
 • CONTRACTOR RESPONSIBLE TO PROVIDE TEMPORARY HEAT IN ROOMS (TO SATISFACTION OF OWNER & CONSULTANT) IF UNIT VENTILATORS ARE NOT INSTALLED IN TIME FOR HEATING SEASON. EXISTING UNITS CAN REMAIN IN PLACE UNTIL NEW UNITS DELIVERED TO SITE.

GENERAL RENOVATION NOTES

- CONTRACTOR TO PROVIDE NEW FIRESTOP CAULKING AT ALL EXISTING PIPE PENETRATIONS THRU BOILER ROOM WALLS. QUANTITY & PIPE SIZE TO BE DETERMINED ON SITE.
- PIPE INSULATION IS TO BE INSTALLED AT ALL EXISTING PIPE, ELBOWS, FITTINGS, ETC. WHERE ABATEMENT REMOVED THE INSULATION AND WHERE EXISTING PIPE ELBOWS, FITTINGS, ETC. ARE REMAINING AS PRESENTLY INSTALLED. CONTRACTOR TO REVIEW ON SITE FOR QUANTITY & SIZES.
- CONTRACTOR TO LOCATE ISOLATION VALVES AND DRAIN SYSTEMS TO ALLOW PROPOSED WORK TO PROCEED. REFILL SYSTEMS AS INDICATED. FLUSHING, CLEANING, & REFILLING WITH CLEAN WATER & CHEMICAL TO WATER TREATMENT CONTRACTOR REQUIREMENTS.
- FREEZE OR DRAIN EXISTING PIPING AS REQUIRED TO FACILITATE CUT IN.

SPECIFIC RENOVATION NOTES

- INSTALL NEW DDC THERMOSTAT & CO2 SENSOR & CONTROL WIRING. FISH EXISTING WALL OR PROVIDE NEW WIREMOLD AS REQUIRED FOR NEW CONTROL WIRING.
- INSTALL NEW ISOLATION BALL VALVES, BALANCING VALVES & 3-WAY TEMPERATURE CONTROL VALVES (W/STRAINER/SHDN) IN EXISTING PIPING.
- NEW R/RS PIPING DN IN CHASE. TO UNIT VENTILATOR. REFER TO DETAIL PIPE SIZING TO MANUFACTURER'S RECOMMENDATION.
- INSTALL NEW DDC THERMOSTAT/SENSOR, & CONTROL WIRING. FISH EXISTING WALL OR PROVIDE NEW WIREMOLD AS REQUIRED FOR NEW CONTROL WIRING.
- PROVIDE NEW BAS CONTROL. REFER TO SPECIFICATION.
- INSTALL NEW ISOLATION BALL VALVES, BALANCING VALVES & 2-WAY TEMPERATURE CONTROL VALVES W/STRAINER & UNIONS IN EXISTING PIPING.
- INSTALL NEW ISOLATION BALL VALVES, BALANCING VALVES AND DRAIN VALVES IN EXISTING PIPING.
- 600X300 INTAKE DUCT UP THRU ROOF TO INTAKE PENTHOUSE. MODIFY EXISTING OPENING TO SUIT.
- PROVIDE NEW MOTORIZED DAMPER ACTUATOR & CONTROL.
- PROVIDE NEW BAS CONTROL/ PROGRAMMING FOR EXISTING EQUIPMENT.

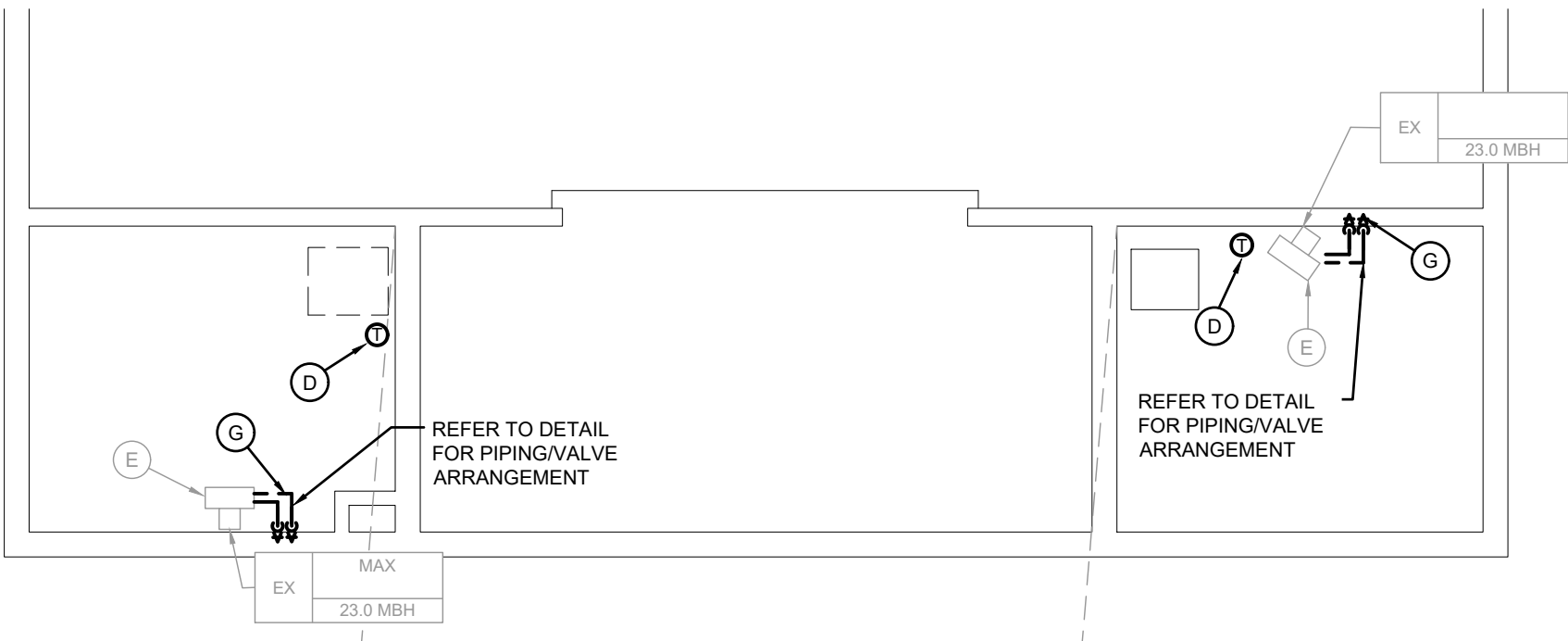
The contractor shall verify all dimensions and report all errors and discrepancies to the Consultant before commencement of the work.
 The drawings show general arrangement of services. Follow as closely as actual building construction will permit. Obtain approval for relocation of service from Consultant before commencement of the work.
 The drawings do not indicate all offsets fitting and accessories which may be required. Provide the same to meet the required conditions.
 Drawings and specifications, etc., prepared and issued by the Consultant are the property of the Consultant and must be returned at the completion of the project. These documents are not to be duplicated or copied without the consent of the Consultant.
 Do not scale this drawing.
 © 2026 DEI Consulting Engineers Inc.



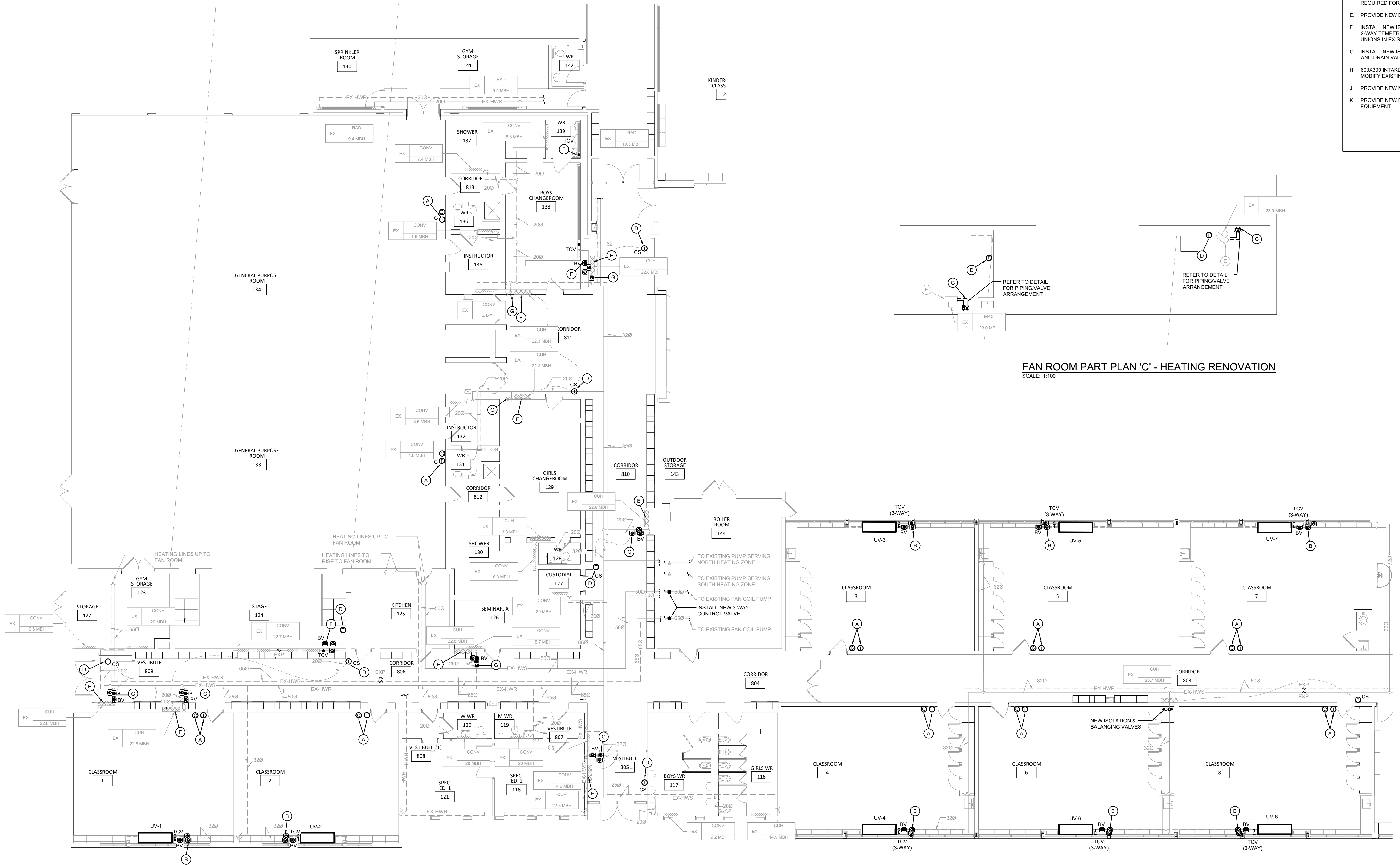
55 Northland Road, Waterloo, ON N2V 1Y8
 Phone: 519-735-3555
 Website: deiassociates.ca
 Project Number: 25394



Key Plan



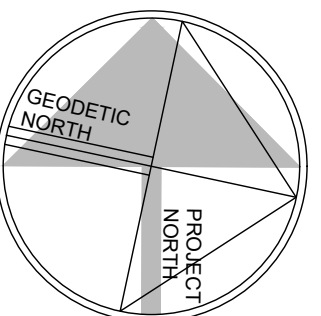
FAN ROOM PART PLAN 'C' - HEATING RENOVATION
 SCALE: 1:100



GROUND FLOOR PART PLAN 'A' - HEATING RENOVATION
 SCALE: 1:100

NOTE: THIS DRAWING IS NOT TO BE SCALED. THE CONTRACTOR IS RESPONSIBLE FOR THE VERIFICATION OF ALL SITE DIMENSIONS AND FOR NOTIFYING THE ARCHITECT OF ANY SITE CONDITIONS AND SITE MEASUREMENTS THAT ARE NOT CONSISTENT WITH THE DRAWINGS.

no.	revision	date



no.	issue	date
1	Issued for Permit & Tender	2026.04.02

project
 WATERLOO REGION DISTRICT SCHOOL BOARD
 BRESLAU PUBLIC SCHOOL
 HVAC AND CLASSROOM RENOVATIONS
 58 JOSEPH STREET, BRESLAU, ON N0B 1M0
 drawing
 GROUND FLOOR PART PLAN 'A' & 'C' - HEATING RENOVATION
 drawing scale
 AS NOTED
 ward99 project number
 25018 - BRESLAU PS WRDSB

ward99 architects
 drawing no.
M4.1
 ward99 architects inc.
 7811 Pine Valley Dr. Unit 11
 Woodbridge, ON L4L 0A2
 info@ward99architects.com
 416 613 5860 www.ward99architects.com

