



**Waterloo Catholic
District School Board**

ADDENDUM # 004

**St Peter CES Renovation
92 Avenue Rd, Cambridge, ON N1R 1C1
RFT No. 2026-13**

17/21 Project No 2528

Documents prepared by:

17|21 architects inc.
1065 Valetta Street, Suite A
London, Ontario
N6H 2Z9

Issue Date:

Thursday, 19 March 2026

This addendum forms part of the Contract Documents and amends the original drawings dated March 4th, 2026 marked as ISSUED FOR TENDER and specifications dated March 4th, 2026

TABLE OF CONTENTS

ADDENDUM # 4 (Including cover)	2 Page(s)
Topographic drawing	1 Page(s)

TOTAL PAGE COUNT FOR THIS ADDENDUM	3 Page(s)
------------------------------------	-----------

PART A- GENERAL

Question #1:

What is the existing roof composition of the three(3) areas being replaced?

Answer:

- 1- Composition of existing roof:
 - Metal Deck
 - ½" Gypsum Board
 - Vapor Barrier
 - 2.0" Urethane Insulation
 - ½" Perlite Insulation
 - 3- 4 Ply Membrane
 - Gravel Surfacing

Question #2:

- 1- Drawing A050 shows the new 8 inch sanitary line extending into the building. Please provide a mechanical drawing to show how far into the building we are to extend this line and where we are to connect to
- 2- The elevations indicated A050 for the new 8 inch sanitary line do not work with the grade elevations shown in the same areas. Please advise on the correct elevations

Answer:

- 1- Sanitary pipe replacement is from exterior of the building to property Line. Refer to drawing A050
- 2- Attached Topographic drawing done on January 27, 2026

Question #3:

- 1- Please confirm existing roof composition of roof areas D, E & F if available.
- 2- Confirm if applicable Kinetic GPO fees should be carried by GC or Roofing Contractor.

Answer:

1. See answer in above. Refer to Question/Answer #1.
- 2- By Roofing Contractor

PART B- SPECIFICATIONS

- RESERVED

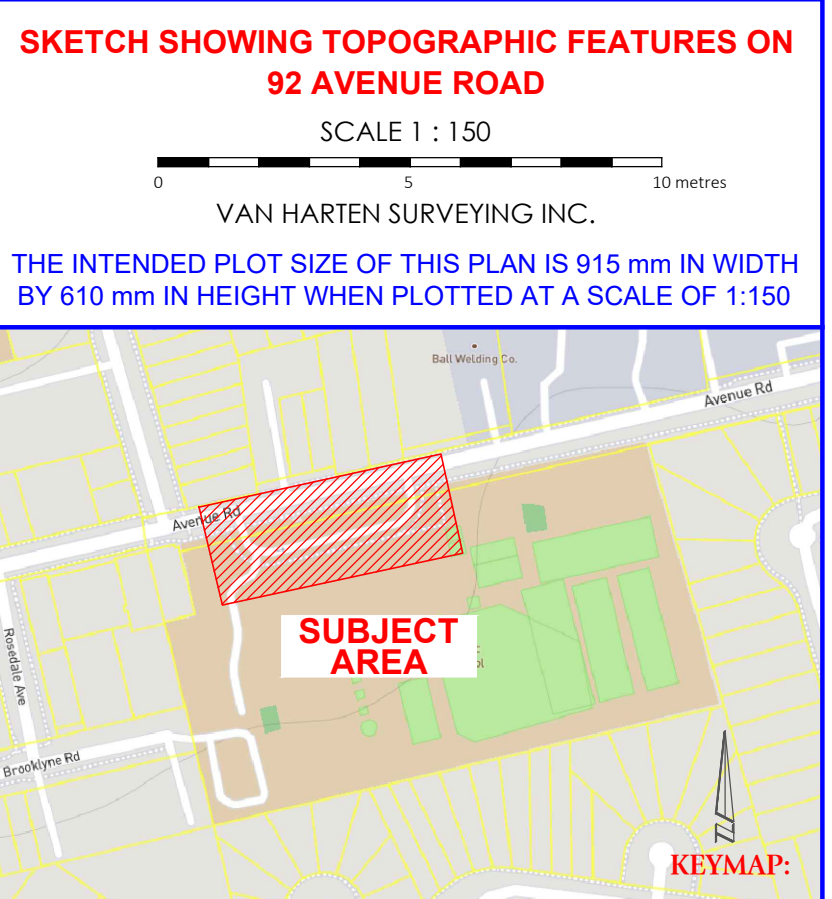
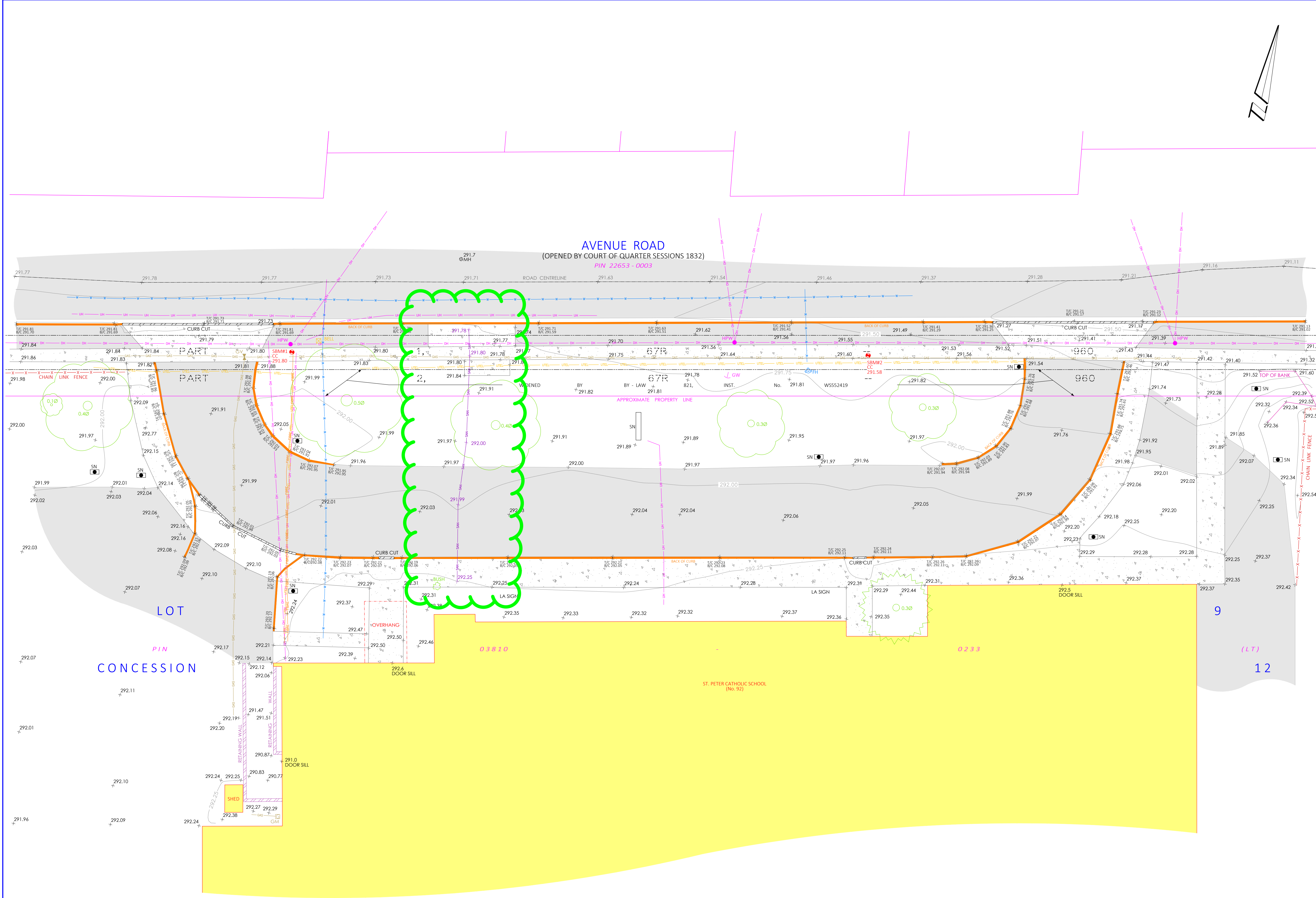
PART C – ARCHITECTURAL DRAWINGS

- RESERVED

PART D – MECHANICAL / ELECTRICAL DRAWINGS

- RESERVE

END OF ADDENDUM # 004



LEGEND:

N, E, S, W	NORTH, EAST, SOUTH, WEST	FIRE HYDRANT	FH
B/C	BOTTOM OF CURB	MANHOLE	MH
T/C	TOP OF CURB	GAS VALVE	GV
WOOD HYDRO POLE	HPW	GAS METER	GM
GLY WIRE	GW		
SIGN	SN		
EXISTING ELEVATION	x 206.55		
FENCELINE			
UNDERGROUND TEL	UTL		
FIBRE OPTICS	FIBRE		
GAS LINE	GAS		
SANITARY SEWER	SAN		
WATERMAIN	WM		
OVERHEAD HYDRO	OH		
UNDERGROUND HYDRO	UH		
DECIDUOUS TREE		ASPHALT	
		CONCRETE	

METRIC:
 DISTANCES SHOWN ON THIS PLAN ARE IN METRES AND CAN BE CONVERTED TO FEET BY DIVIDING BY 0.3048.

BENCHMARK:
 ELEVATIONS ARE BASED ON GPS OBSERVATIONS FROM PERMANENT REFERENCE STATIONS IN THE NAD83 (CSRS-2010) COORDINATE SYSTEM, WITH HEIGHTS CONVERTED TO ORTHOMETRIC ELEVATIONS ON THE CGVD28 DATUM (1978 ADJUSTMENT) WITH GEOID MODEL HTV2.0, AS SUPPLIED BY NATURAL RESOURCES CANADA.
 SITE BENCHMARK #1: CUT CROSS IN CONCRETE SIDEWALK, HAVING AN ELEVATION OF 291.80 METRES
 SITE BENCHMARK #2: CUT CROSS IN CONCRETE SIDEWALK, HAVING AN ELEVATION OF 291.58 METRES

BEARING AND DISTANCE NOTE:
 1. BEARINGS ARE GRID BEARINGS AND ARE DERIVED FROM GPS OBSERVATIONS AND ARE REFERRED TO THE UTM PROJECTION, ZONE 17, NAD 83 (CSRS-2010) ADJUSTMENT.
 2. DISTANCES SHOWN ON THIS PLAN ARE ADJUSTED GROUND DISTANCES AND CAN BE CONVERTED TO GRID DISTANCES BY MULTIPLYING BY AN AVERAGED CORRECTED SCALE FACTOR OF 0.999598

NOTE:
 • THE ORIGINAL VERSION OF THIS PLAN WAS PREPARED IN COLOUR.
 • FOR THE PURPOSE OF DIRECTIONAL TIES, NORTH IS CONSIDERED TOP OF THE SHEET.

THIS SKETCH WAS PREPARED ON THE 27 DAY OF JANUARY, 2026.

CAUTION:
 • THIS IS NOT A PLAN OF SURVEY AND SHALL NOT BE USED EXCEPT FOR THE PURPOSE INDICATED IN THE TITLE BLOCK

LEGAL DESCRIPTION OF SUBJECT PROPERTY
**PART OF LOT 9
 CONCESSION 12**
 GEOGRAPHIC TOWNSHIP OF NORTH DUMFRIES
 CITY OF CAMBRIDGE
 REGIONAL MUNICIPALITY OF WATERLOO

REVISION SCHEDULE

No.	DATE	REVISIONS
1	JAN 27/ 26	FIRST SUBMISSION

Van Harten
 LAND SURVEYORS - ENGINEERS

Kitchener/Waterloo Ph: 519-742-8371 Guelph Ph: 519-821-2763 Orangeville Ph: 519-940-4110
 www.vanharten.com info@vanharten.com

DRAWN BY: PJ CHECKED BY: MS PROJECT No. 35152-26
 Jan 27, 2026-3:25:33 PM
 M:\Geographic\KW\North Dumfries\CON 12\ACAD\TOPO SKETCH LTR CON12 (35152-26) (UTM2010).dwg
 NO PERSON MAY COPY, REPRODUCE, DISTRIBUTE OR ALTER THIS PLAN IN WHOLE OR IN PART WITHOUT THE WRITTEN PERMISSION OF VAN HARTEN SURVEYING INC.
 © 2026

BOUNDARIES NOTE
 BOUNDARIES SHOWN IN HEAVY OUTLINE ARE IN ACCORDANCE WITH PRIOR PLANS AND DEEDS, AND HAVE NOT BEEN VERIFIED BY SURVEY.

CALL BEFORE YOU DIG
 THE LOCATION OF SERVICES ON THIS DRAWING ARE ONLY APPROXIMATE. PRIOR TO ANY CONSTRUCTION IT IS THE RESPONSIBILITY OF THE CONTRACTOR/BUILDER TO ENSURE THE EXACT LOCATION OF ALL UTILITIES.