

**LIGHTING CONTROL SYSTEMS SEQUENCE OF OPERATION**

Space Type	Room Names	Control Sequence / Control Device(s):	Control System
Enclosed Rooms	MEETING ROOM, QUIET ROOM	<b>Sequence:</b> ON: Lights turned on automatically via occupancy sensor (where applicable). ADJUST: The occupant manually adjusts lighting within the room to desired level or preset in each group via wall dimmer. OFF: 5 minutes after the room has been vacated, the lights will automatically turn off.	DIGITAL ROOM CONTROL SYSTEM
Learning Commons	LIBRARY	<b>Sequence:</b> ON: Lights turned on manually via wall station(s) (vacancy mode). ADJUST: The occupant manually adjusts lighting zones within the room to 100% or off via wall scene stations. OFF: 5 minutes after the room has been vacated, the lights will automatically turn off. OVERRIDE: User manually adjusts fixture zone lighting levels or on/off and that state shall remain without reverting to previous state unless sensors do not detect occupancy for extended period, whereby normal sensor operation is to resume. 24HOUR: Lights designated for 24 hour operation to remain at 100% output.	DIGITAL ROOM CONTROL SYSTEM
Washroom	TYPICAL	<b>Sequence:</b> ON: Lights turned on manually via wall switch. OFF: Lights turned off manually via wall switch.	DIGITAL ROOM CONTROL SYSTEM

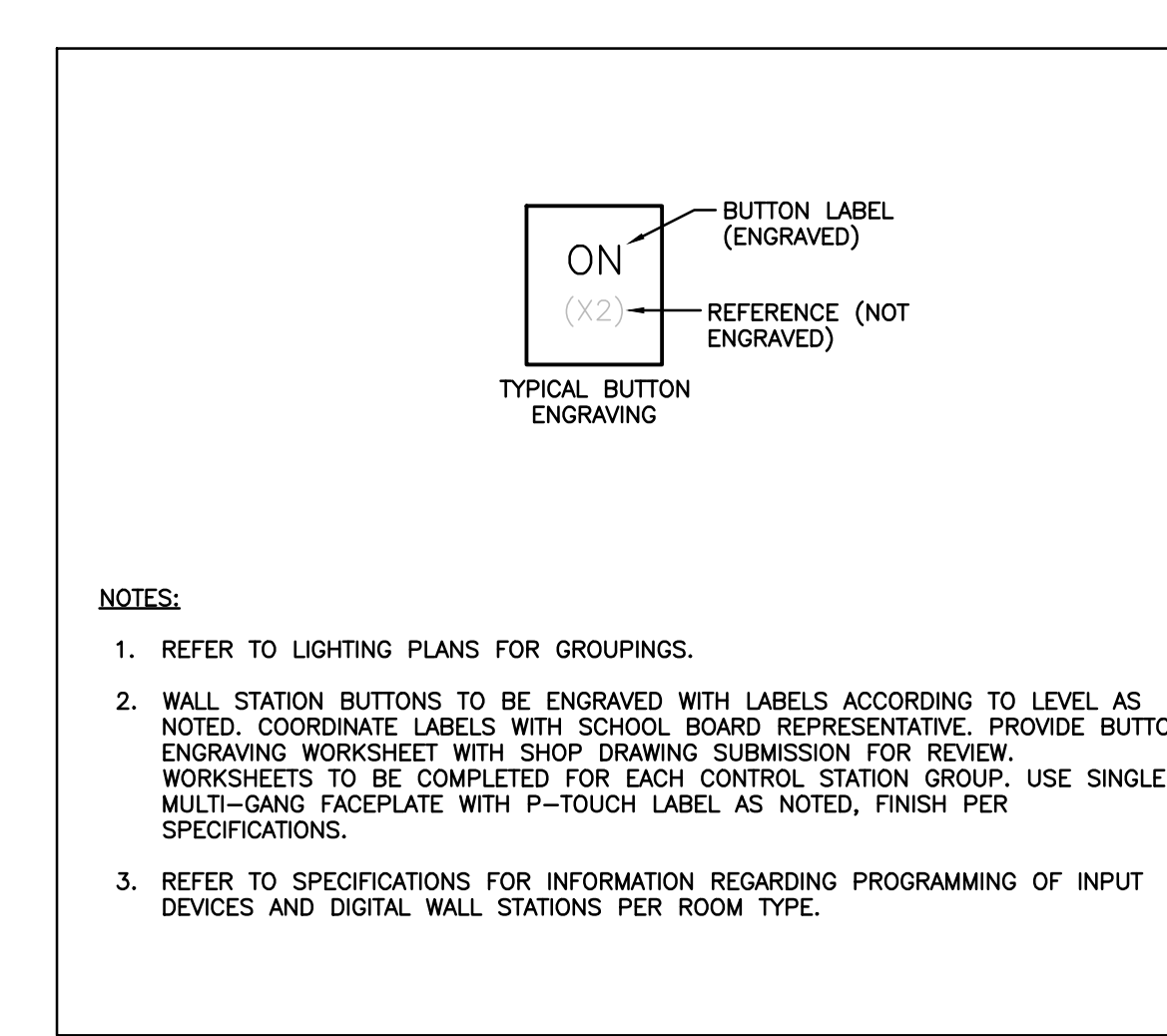
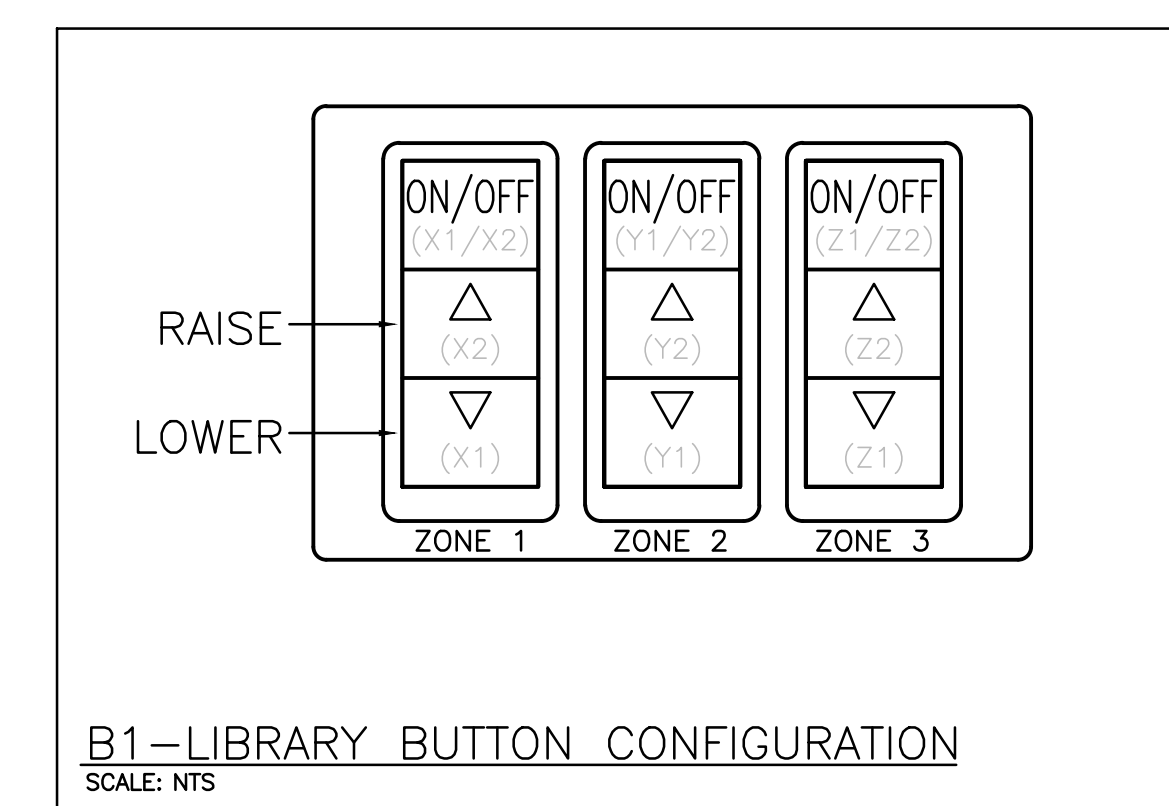
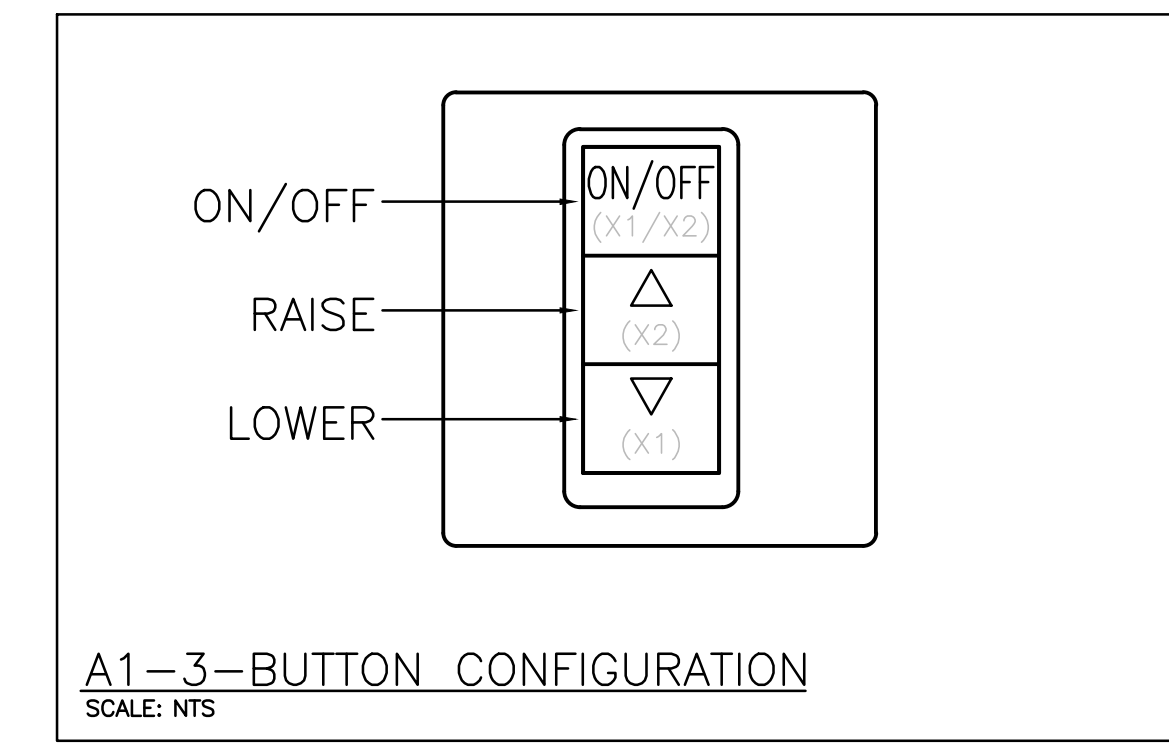
**SYSTEM DESCRIPTIONS:**

DIGITAL ROOM CONTROL (DLM) SYSTEM
DIGITAL ROOM CONTROL RELAY POWER PACKS C/W PLUG AND PLAY DIGITAL SENSORS AND WALL MOUNT CONTROL STATIONS. REFER TO SPECIFICATIONS SECTION 26 51 16.

**LED LIGHT FIXTURE SCHEDULE**

Item	Manufacturer/Catalog Number	Voltage	Lamp	Mounting	Description
A	COOPER CAT. #24GR-LD5-30-A-UNV-L835-CD1 LITHONIA CAT. #20TL4-30L-EZ1-LP835 SIGNIFY CAT. #2TGS2L835-4-FS-02F-UNV-DIM	120V	27W LED 3500m 3500K	RECESSED	2'x4' (610x1220mm) LED TROFFER C/W STEEL HOUSING, PATTERN 12 LENS, AND 0-10V DIMMING.
B	MARK LIGHTING CAT. #S4PD-LLP-XFT-MSL4-80CR-35K-400LMF-SCT-MIN1-FL -MWLT-XX-ZT COOPER CAT. #S12ADIP-C-575D835-C4-XX-XF0-1-U-DD-XX LUMENWERX CAT. #W4P-D-HLO-FH-NA-80-500-35-XFT-UNV-D1-1C-XX	120V	3W/ft LED 400m/ft 3500K	SUSPENDED	LINEAR PENDANT FIXTURE C/W ACRYLIC LENS AND 0-10V DIMMING. FINISH TO SUIT ARCHITECT. REFER TO FLOOR PLANS FOR CONTINUOUS RUN LENGTH OF FIXTURES. CONFIRM T-GRID SIZE FOR MOUNTING KIT.
B1	MARK LIGHTING CAT. #SL4L-LOP-XFT-FLP-XX-80CRI-35K-600LMF-MIN1-120-ZT COOPER CAT. #S12ADIP-C-575D835-ETGXFD-1-U-DO-F-XX LUMENWERX CAT. #W4P-D-HLO-FH-SW-80-750-35-XFT-UNV-D1-1C-XX	120V	6W/ft LED 600m/ft 3500K	RECESSED	LINEAR RECESSED FIXTURE C/W ACRYLIC LENS AND 0-10V DIMMING. FINISH TO SUIT ARCHITECT. REFER TO FLOOR PLANS FOR CONTINUOUS RUN LENGTH OF FIXTURES. CONFIRM T-GRID SIZE FOR MOUNTING KIT.
C	COOPER CAT. #LD60-20-90-35-D010-W-1-L1 SIGNIFY CAT. #SRN-08L20835W210U-CGRDLCL GOTHAM CAT. #EVO6-35/20-AR-LSS-WD-MWLT-G21	120V	21W LED 2000 LUMENS 3500K	RECESSED	6" (140mm) ROUND DOWNLIGHT C/W WIDE BEAM REFLECTOR, SEMI-SPECULAR FINISH AND 0-10V DIMMING.
F	COOPER CAT. #22GR-LD5-20-A-UNV-L835-CD1 LITHONIA CAT. #20TL2-20L-EZ1-LP835 SIGNIFY CAT. #2TGS2L835-4-FS-02F-UNV-DIM	120V	16W LED 2000m 3500K	RECESSED	2'x2' (610x610mm) LED TROFFER C/W STEEL HOUSING, PATTERN 12 LENS, AND 0-10V DIMMING.
G	COOPER CAT. #HC6-10-D010 C/W HM6-0525-835 C/W 61-WD-H LITHONIA CAT. #LDN6-35/10-L06-AR-LSS-MWLT-G21 ELITE CAT. #H6-LED-1200L-DIM10-MWLT-WD-35K-90-HH6-6501-XX	120V	9W LED 1000 LUMENS 3500K	RECESSED	6" (150mm) RECESSED LED POTLIGHT C/W 0-10V DIMMING DRIVER, SEMI-SPECULAR CLEAR REFLECTOR AND WHITE PAINTED FLANGE.
EXIT LIGHTS (SELF-POWERED)	STANPRO CAT. #RMXLOWHIB AIMLITE CAT. #RPALUMWHTBAT LUMACELL CAT. #LA SERIES	12V/120V	LED 2.5 WATT (MAX,DC 2 WATT (MAX,DC	SURFACE	LED EXTRUDED ALUMINUM PICTOGRAM FIXTURE C/W GREEN FACE AND WHITE LEGEND, UNIVERSAL MOUNTING TO SUIT WALL, END OR CEILING, MAXIMUM 63mm (2.5") THICKNESS AND 12V INTERNAL SEALED RECHARGABLE BATTERY PROVIDING MINIMUM 30 MINUTES OF EMERGENCY POWER
EMER. LIGHTS (SELF-POWERED)	BEGHELLI TEMPESTA SERIES: EM-3 #TA-LED-EM-120-TB-90SP (RECESSED TBAR MOUNT)  OR APPROVED EQUALS BY: STANPRO AIMLITE CAT. #VP1 SERIES LUMACELL CAT. #LBL SERIES	12V/120V	N/A	RECESSED	VANDAL RESISTANT LONG LIFE, SEALED BATTERY, C/W 17W LED MODULES, POLYCARBONATE BODY AND 90 MINUTE BATTERY DURATION
COMBO UNIT	STANPRO CAT. EM-1#PRML123602S4LR EM-2#PRML127202S4LR AIMLITE CAT. EM-1#CARP1236U2MDWHT EM-2#CARP1272U2MDWHT LUMACELL CAT. EM-1#LACXW12502LD7ATN EM-2#LACXW12722LD7ATN	12V/120V	LED 4W MR16	SURFACE	LED EXTRUDED ALUMINUM PICTOGRAM FIXTURE C/W GREEN FACE AND WHITE LEGEND, UNIVERSAL MOUNTING TO SUIT WALL, END OR CEILING, MAXIMUM 63mm (2.5") THICKNESS AND 12V INTERNAL SEALED RECHARGABLE BATTERY PROVIDING MINIMUM EMERGENCY WATTAGE AS NOTED BY THE CATALOGUE NUMBER, INTEGRAL 12V LED HEADS TO HAVE COMPACT DESIGN WITH VARIABLE LIGHT PATTERN, WHITE COLOUR, AND 360° ROTATION. UNIT SHALL OPERATE ON 12V. WHERE NOTED UNIT SHALL BE C/W WIREGUARD.

- NOTES:
- LED LUMEN VALUES QUOTED FOR FIXTURES ARE TO BE CONSIDERED MINIMUM, AND AS ABSOLUTE OR DELIVERED LUMENS. LUMEN VALUES SHOULD NOT EXCEED MORE THAN 10% OF SPECIFIED OUTPUT.
  - EQUAL MANUFACTURERS/SUPPLIERS MUST CONFIRM THE PROPOSED FIXTURE BY EMAIL WITH CONSULTANTS OFFICE A MINIMUM OF 10 DAYS PRIOR TO TENDER CLOSE.
  - WHERE NOTED ABOVE THAT FIXTURES ARE TO HAVE FINISH TO SUIT ARCHITECT THE FINISH WILL BE SELECTED FROM MANUFACTURER'S OPTIONAL COLOUR CHART (i.e. RAL COLOURS OR EQUAL). PROVIDE THIS COLOUR CHART WITH SHOP DRAWING SUBMITTAL.
  - IF THERE ARE ANY DISCREPANCIES BETWEEN THE FIXTURE PART NUMBER AND DESCRIPTION, IT IS THE RESPONSIBILITY OF THIS CONTRACTOR TO BRING THESE TO THE ELECTRICAL CONSULTANT'S ATTENTION PRIOR TO TENDER CLOSE. NO EXTRAS WILL BE ENTERTAINED FOR FAILURE TO DO SO. FINAL FIXTURE CHARACTERISTICS AND DESCRIPTION WILL BE MARKED BY CONSULTANT AT TIME OF SHOP DRAWING REVIEW.
  - PROVIDE ALTERNATE PRICE (AP-01) TO CHANGE TYPE B LIGHT FIXTURE FROM SUSPENDED TO RECESSED. REFER TO ELECTRICAL SPECIFICATIONS SECTION FOR ALTERNATE PRICE INFORMATION AND FIXTURE SPECIFICATION.



Revision Schedule

Particular	Date	No.
ISSUED FOR PERMIT AND TENDER	2023.03.05	1

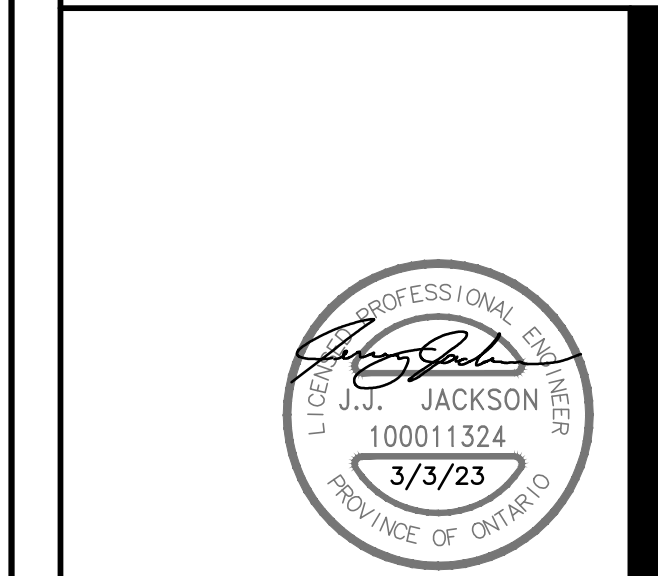
**DEI**  
Consulting Engineers  
MECHANICAL | ELECTRICAL | AQUATIC

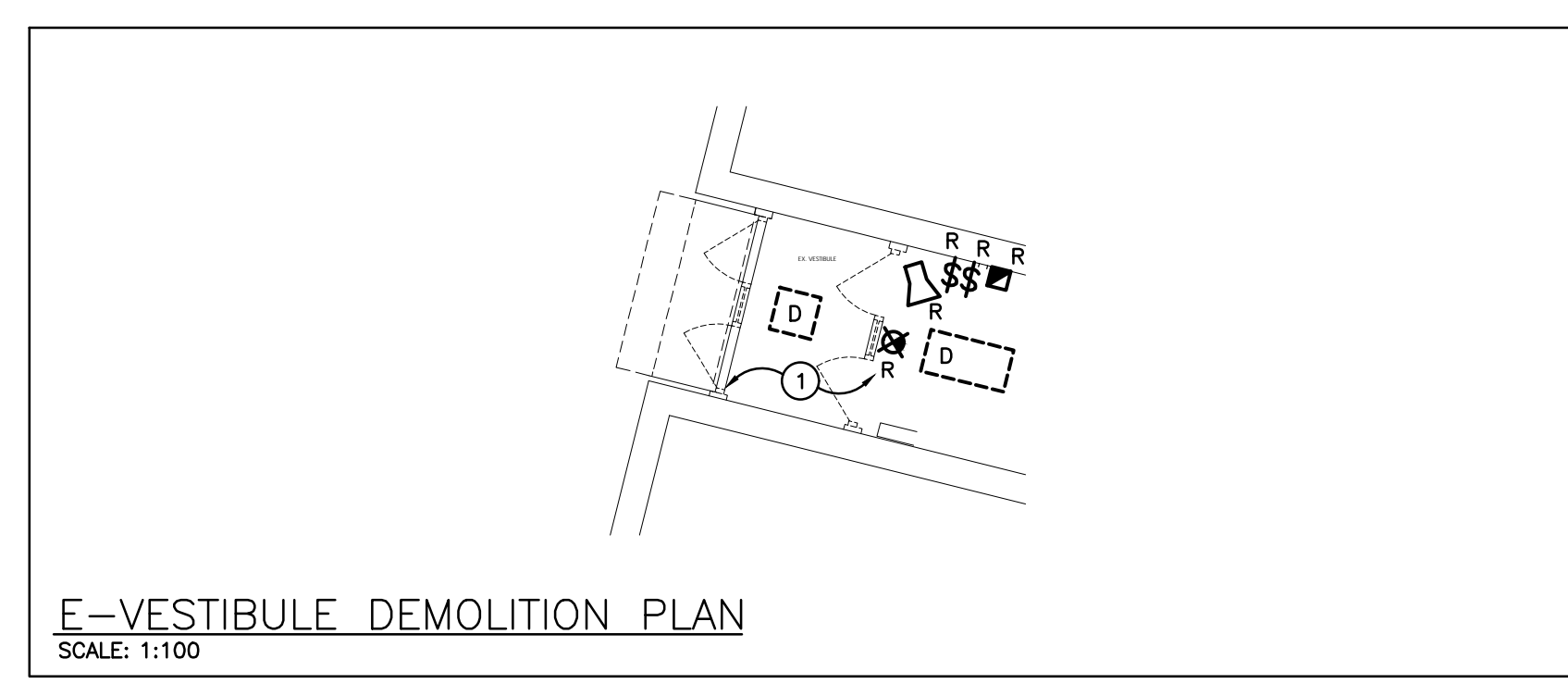
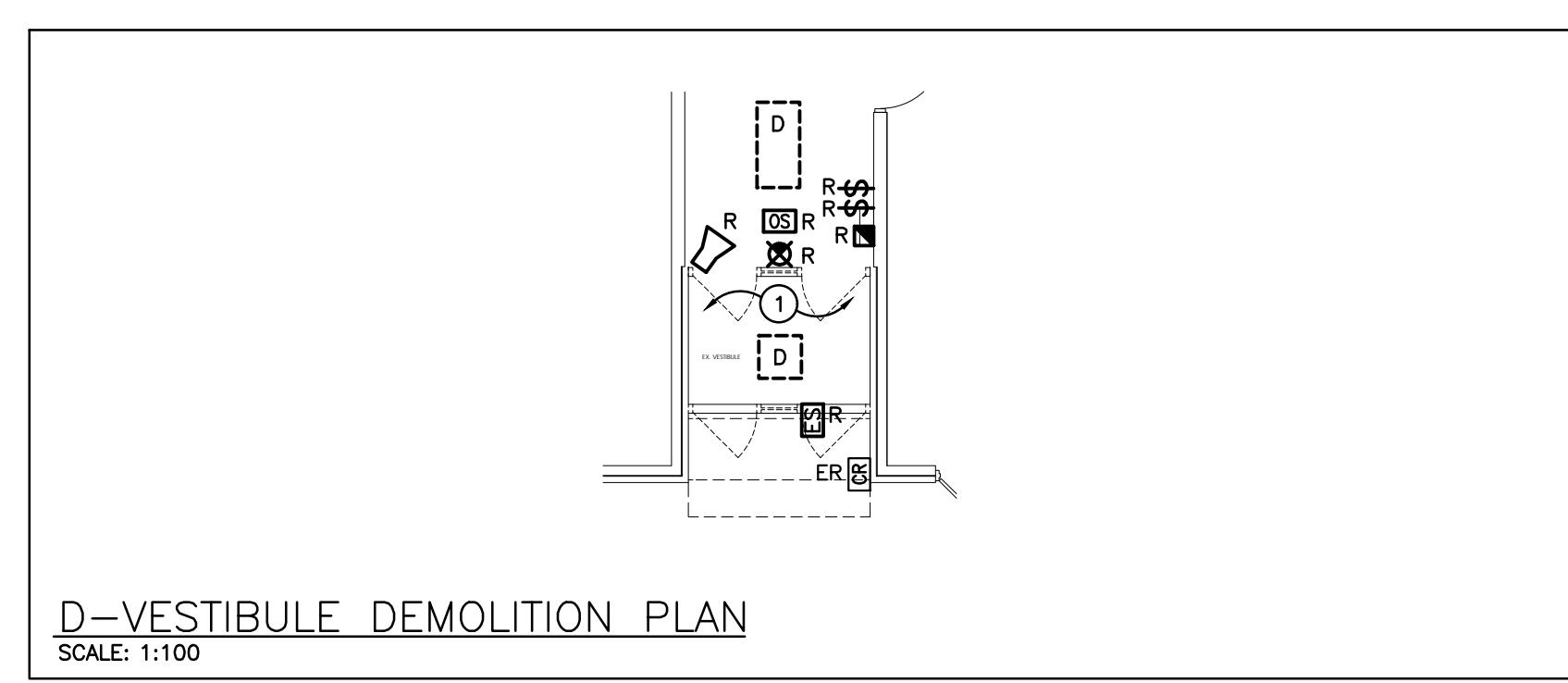
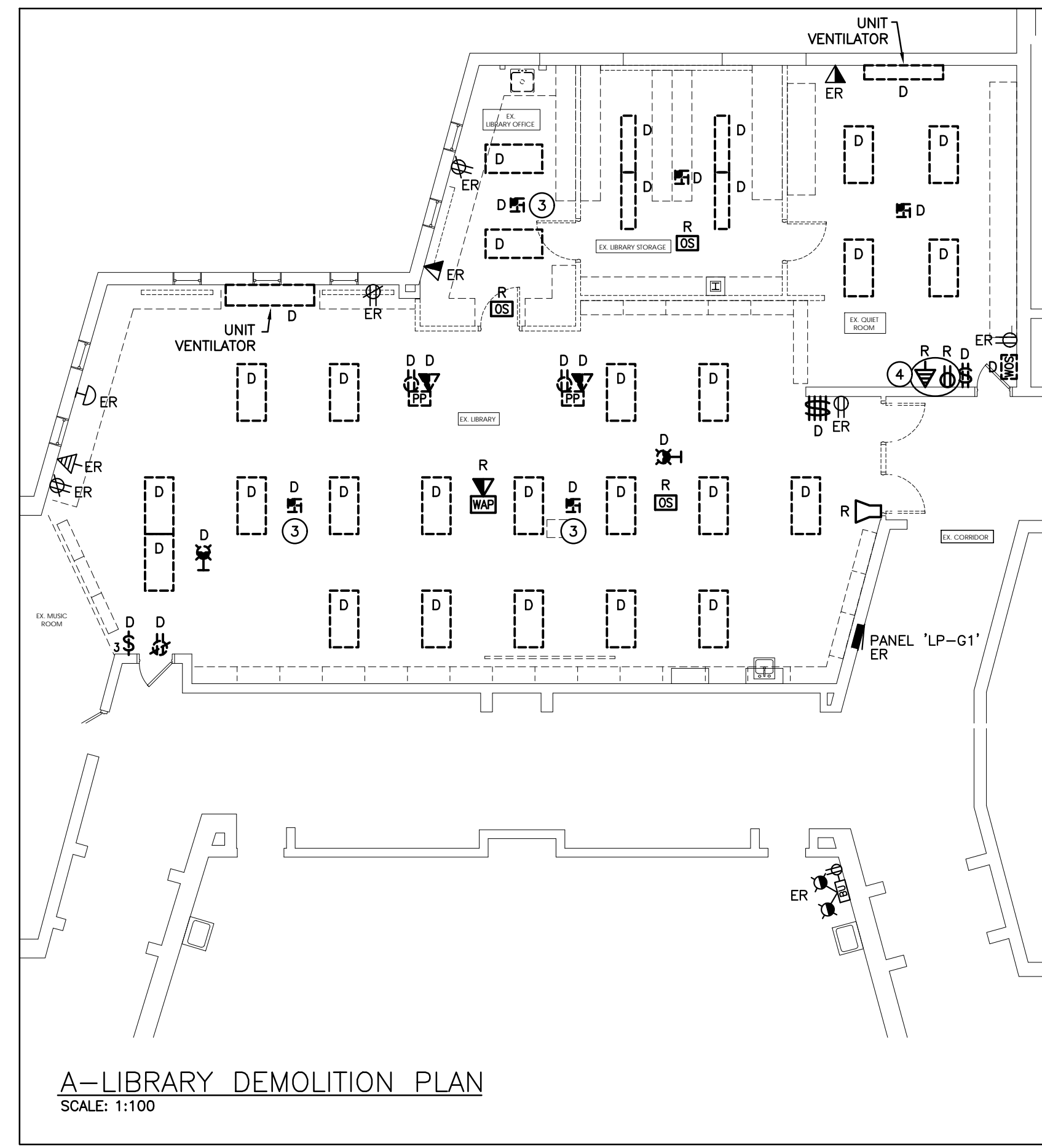
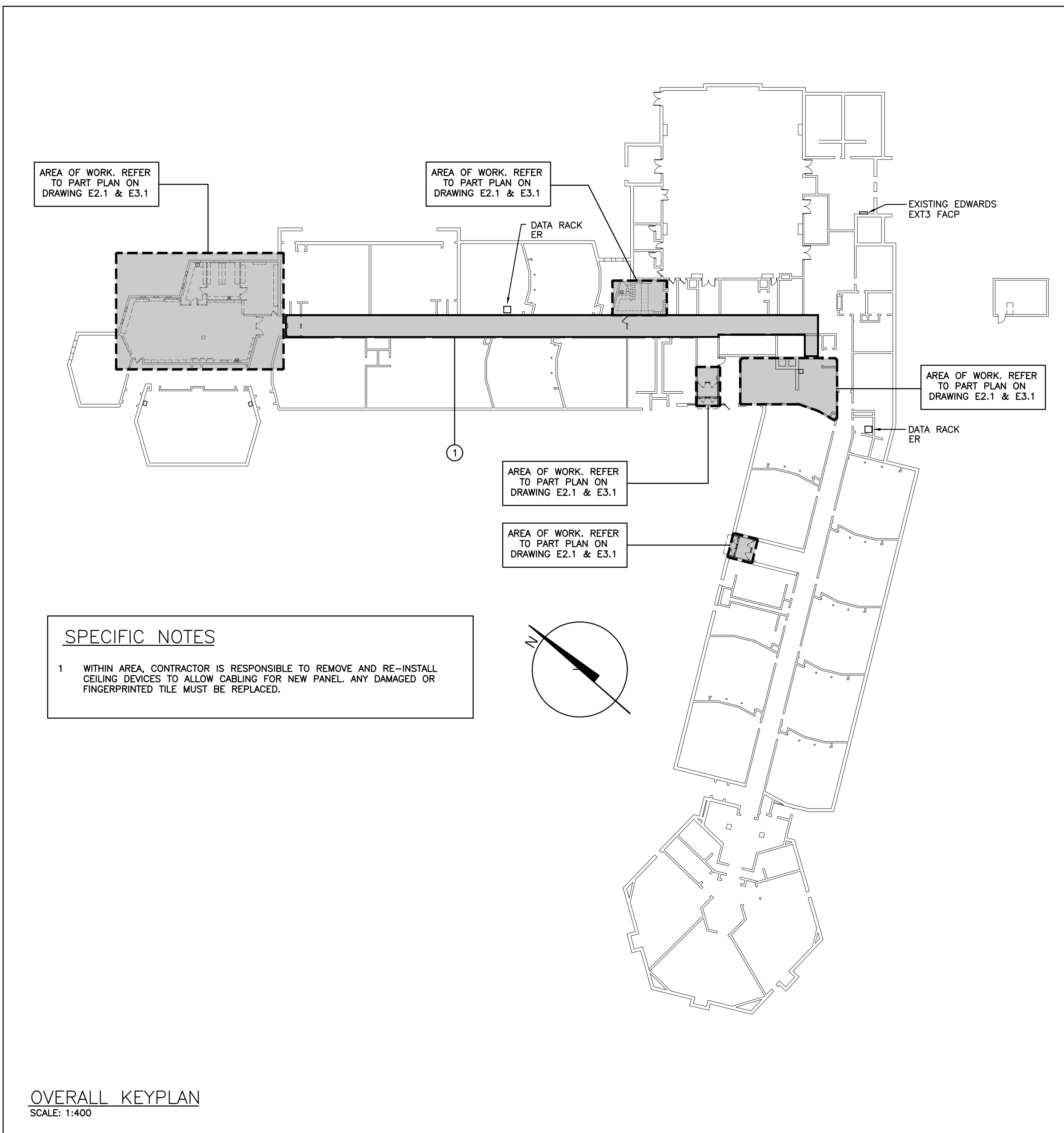
55 Northland Road, Waterloo, ON N2V 1Y8  
Phone: 519-725-3555  
Website: deiassociates.ca  
Project Number: 20298

The contractor shall verify all dimensions and report all errors and discrepancies to the Consultant before commencement of the work.  
The drawings show general arrangement of services. Follow as closely as actual building construction will permit. Obtain approval for relocation of service from Consultant before commencement of the work.  
The drawings do not indicate all offsets fitting and accessories which may be required. Provide the same to meet the required conditions.  
Drawings and specifications, etc., prepared and issued by the consultant are the property of the consultant and must be returned at the completion of the project. These documents are not to be duplicated or copied without the consent of the Consultant. Do not scale this drawing.  
© 2023 DEI & Associates Inc.

Project Name: **CRESTVIEW P.S. RENOVATION**  
Project Location: **153 MONTCALM DRIVE KITCHENER, ON N2B 2R6**  
Project Number: **20298**

Client: **CRESTVIEW PUBLIC SCHOOL**



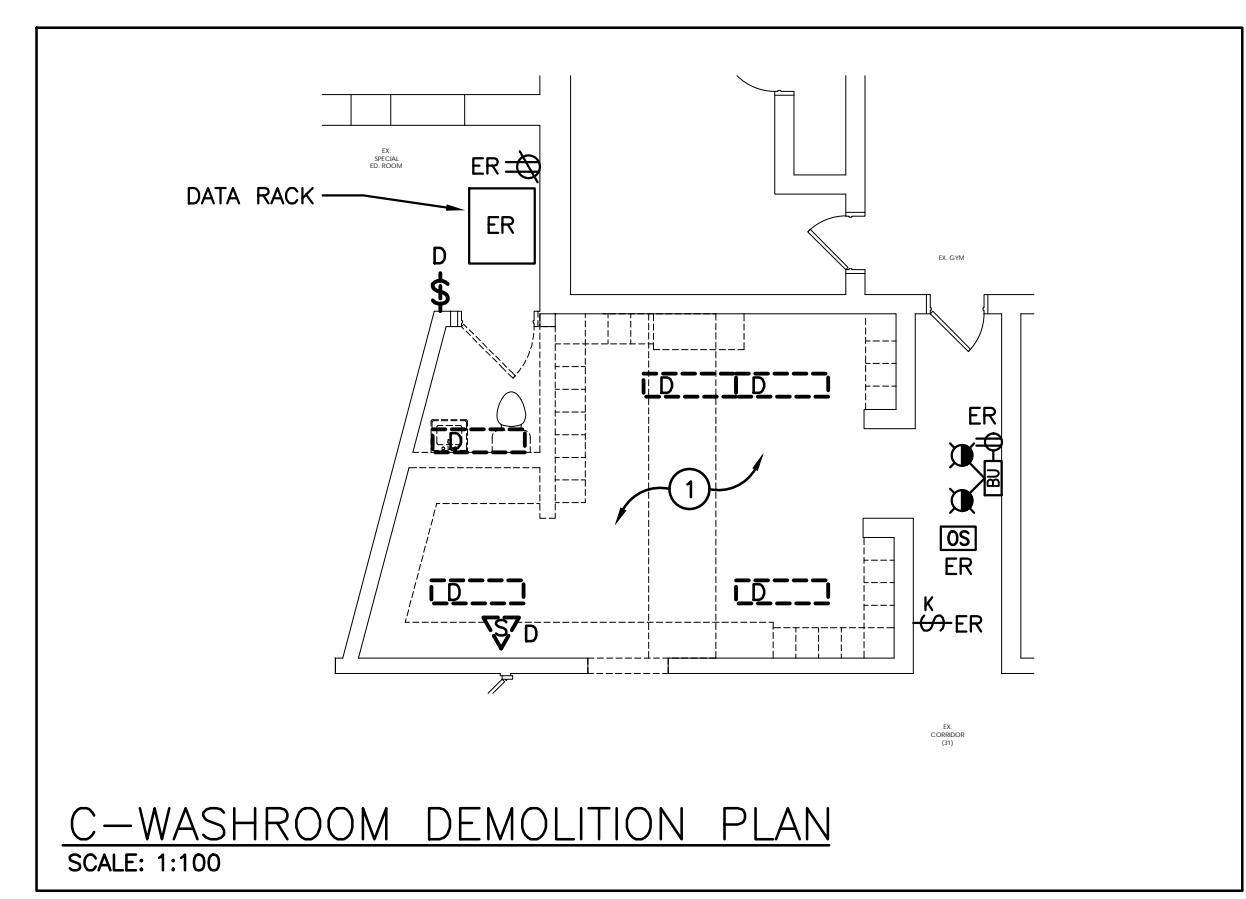
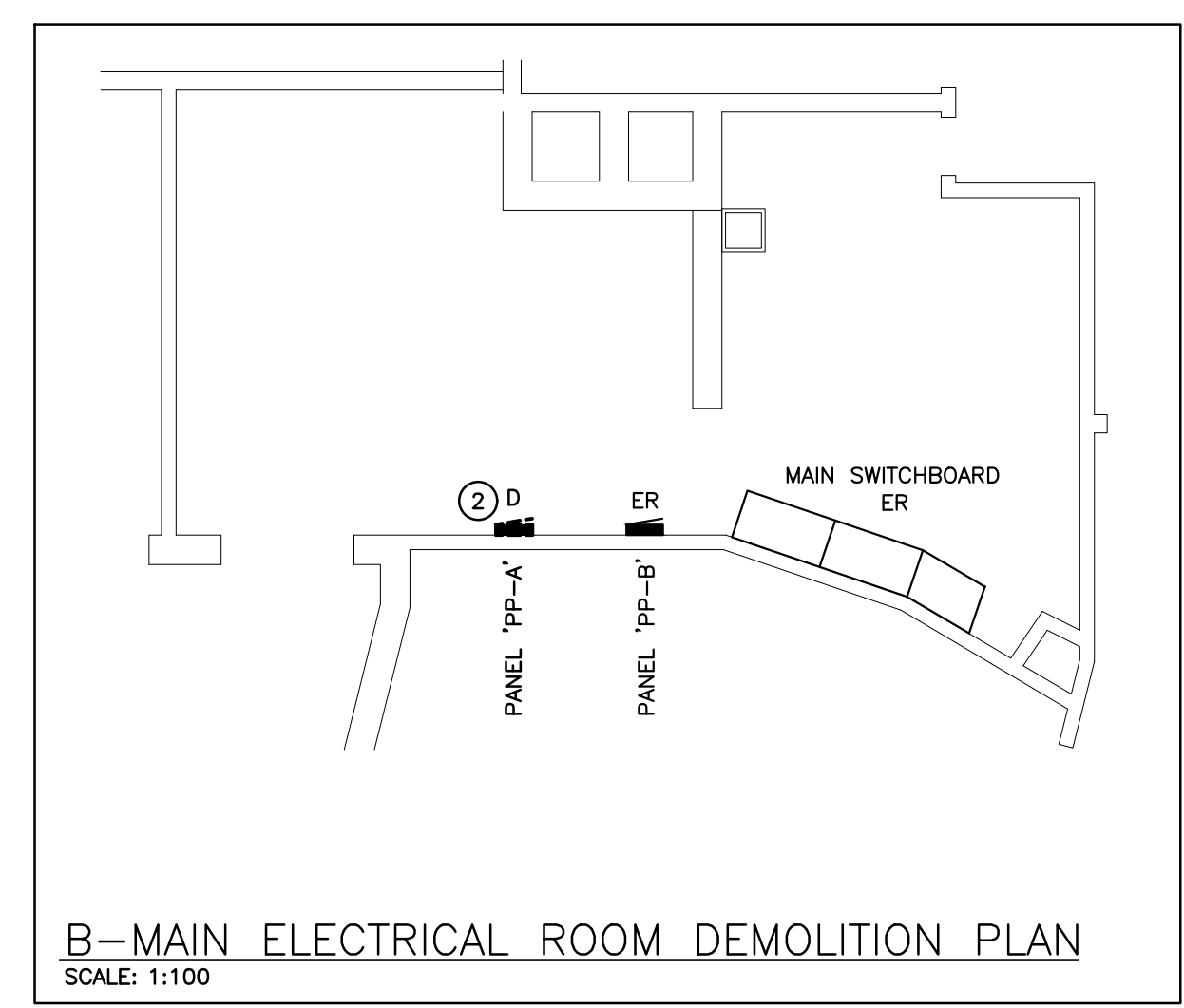


**GENERAL DEMOLITION NOTES**

- 'ER' DENOTES EXISTING ITEM TO REMAIN.
- EXISTING ELECTRICAL EQUIPMENT NOT SHOWN SHALL REMAIN UNLESS NOTED OTHERWISE.
- 'R' INDICATES EXISTING ITEM TO BE RELOCATED. REFER TO RENOVATION DRAWINGS AND RELOCATE DEVICE AND WIRING TO SUIT. UNLESS OTHERWISE NOTED.
- 'D' INDICATES EXISTING ITEM TO BE DELETED. UNLESS OTHERWISE NOTED DISCONNECT AND REMOVE NOTED DEVICE AND WIRING BACK TO SOURCE.
- ALL LIGHTING FIXTURES BEING RELOCATED SHALL BE CLEANED AND CHECKED PRIOR TO BEING REINSTALLED.

**SPECIFIC DEMOLITION NOTES**

- 1 MAINTAIN EXISTING LIGHTING CIRCUIT WITHIN AREA FOR INSTALLATION OF NEW LIGHT FIXTURES AS SHOWN ON RENOVATION PLAN.
- 2 INDICATES EXISTING DISTRIBUTION EQUIPMENT TO BE DISCONNECTED AND REMOVED. MAINTAIN EXISTING BRANCH CIRCUITS AND PANEL FEEDS FOR CONNECTION TO REPLACEMENT EQUIPMENT, REFER TO RENOVATION PLANS AND RISER DIAGRAMS.
- 3 INDICATED DEVICE TO BE REMOVED. MAINTAIN EXISTING WIRING FOR RECONNECTION TO NEW DEVICE AS SHOWN ON RENOVATION PLAN.
- 4 INDICATED DEVICES TO BE REMOVED AND RE-INSTALLED AS NECESSARY TO ALLOW FOR WALL WORK REQUIRED FOR NEW PANEL.



Revision Schedule		
Particular	Date	No.
ISSUED FOR PERMIT AND TENDER	2023.03.05	1

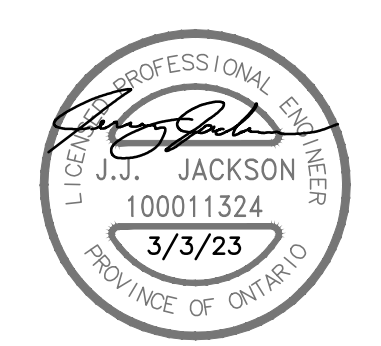
**DEI**  
Consulting Engineers  
MECHANICAL | ELECTRICAL | AQUATIC

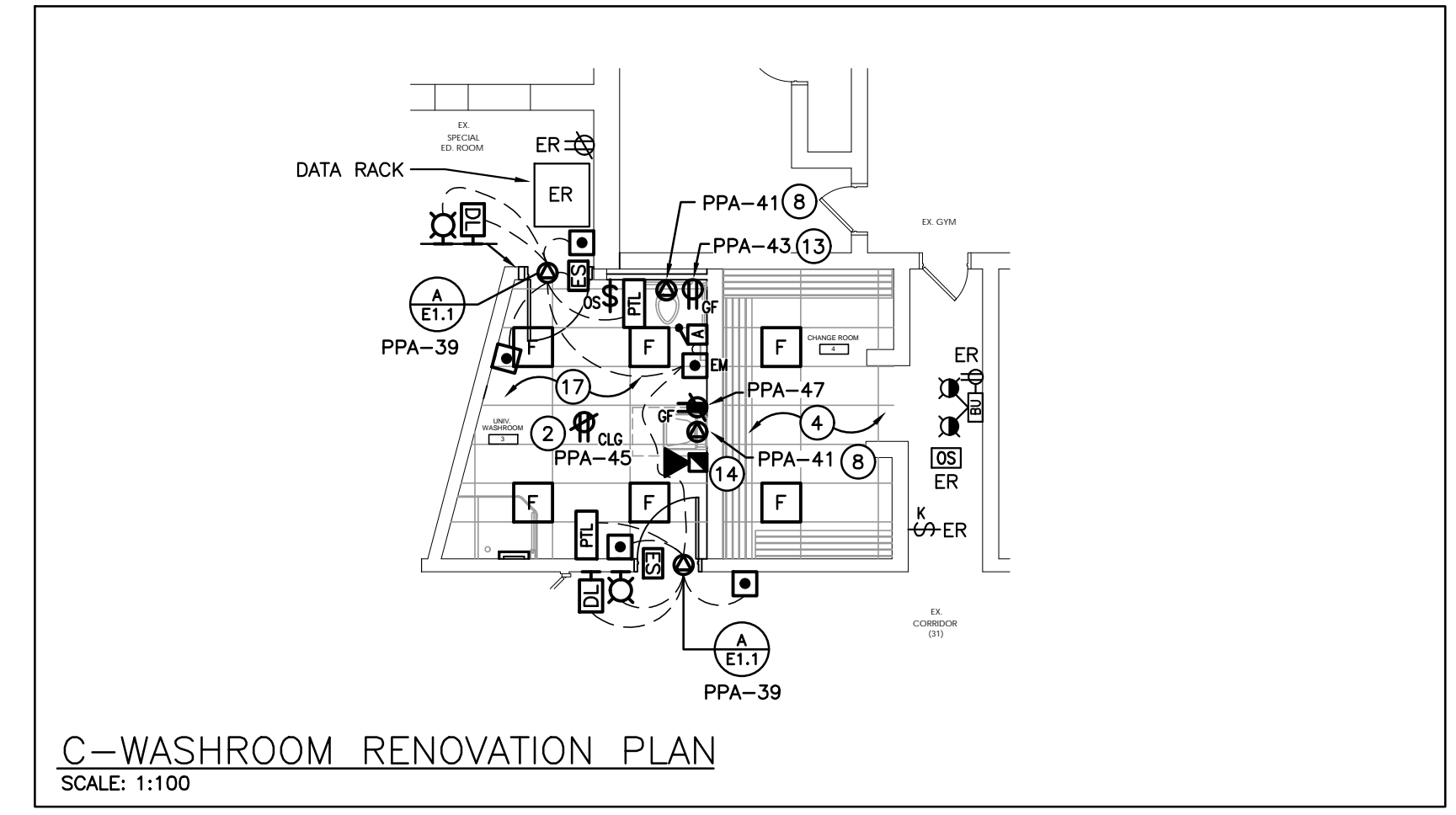
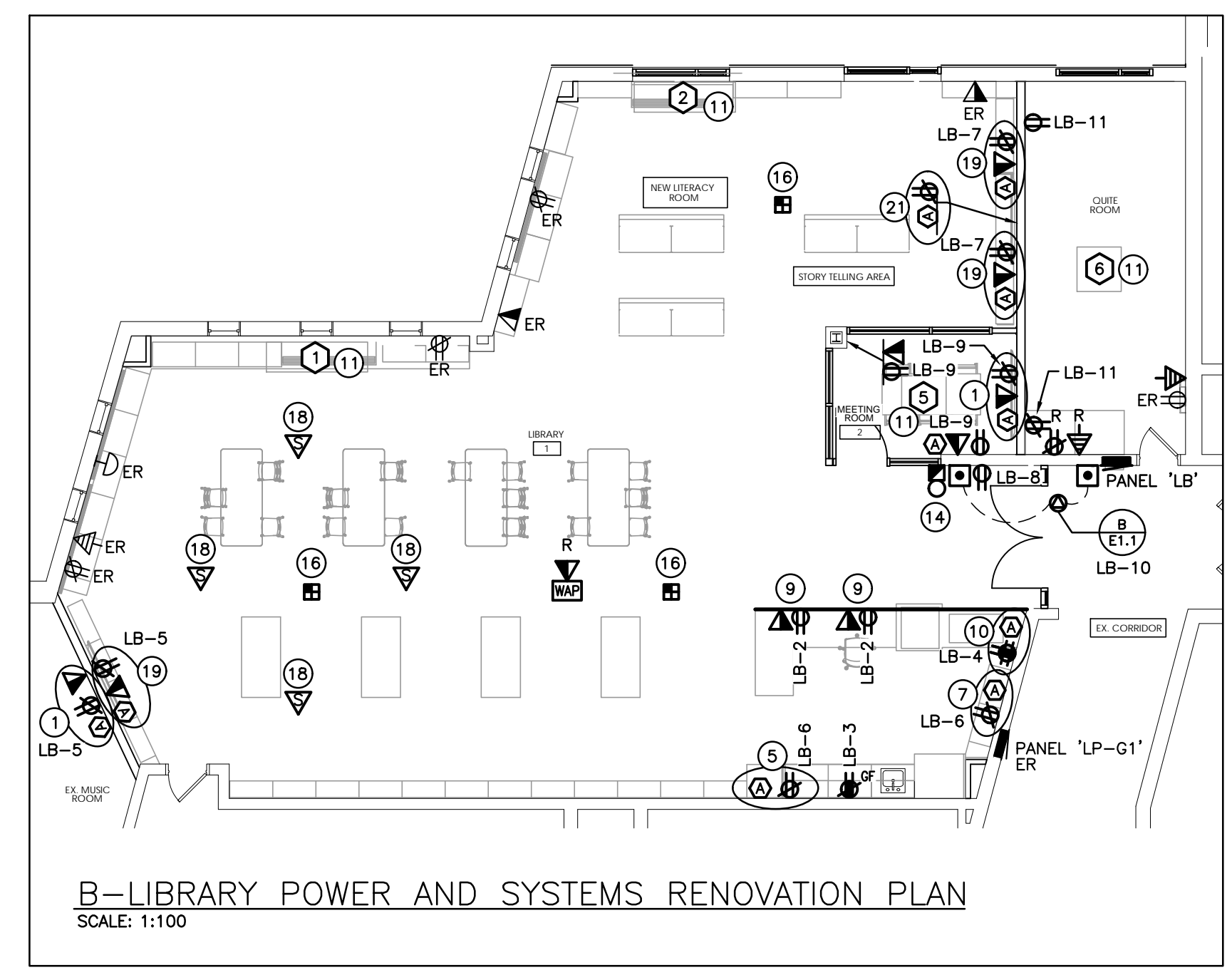
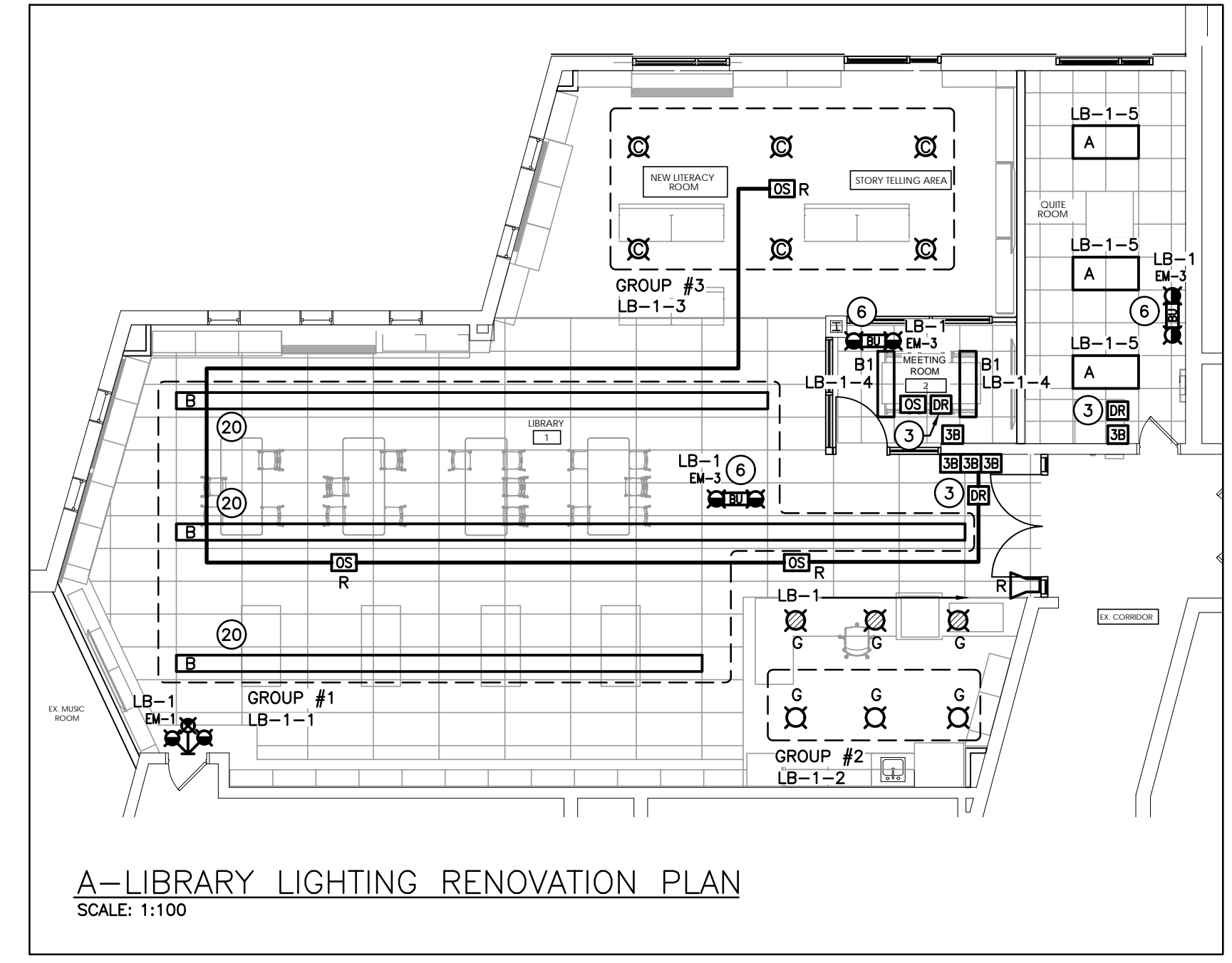
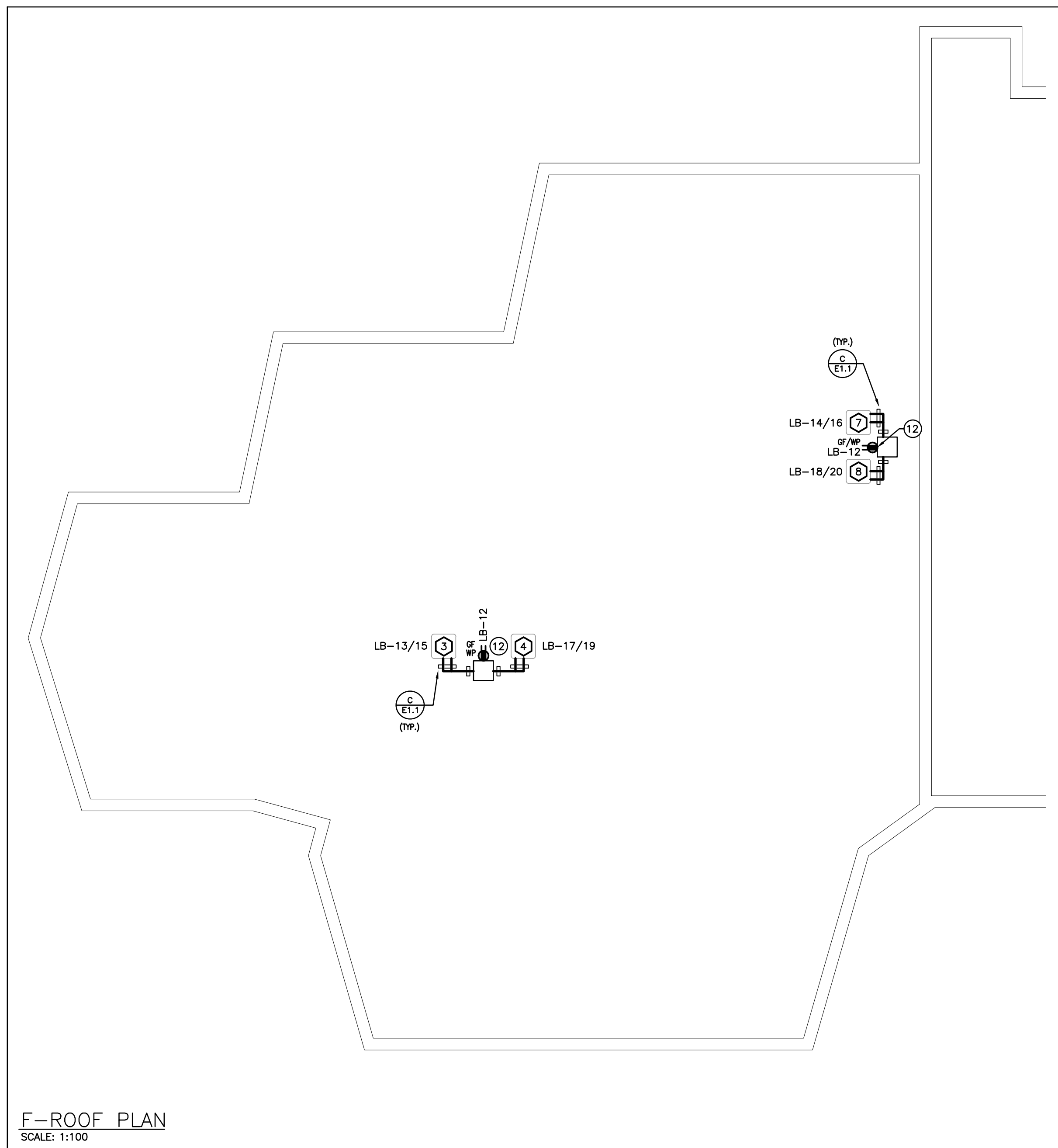
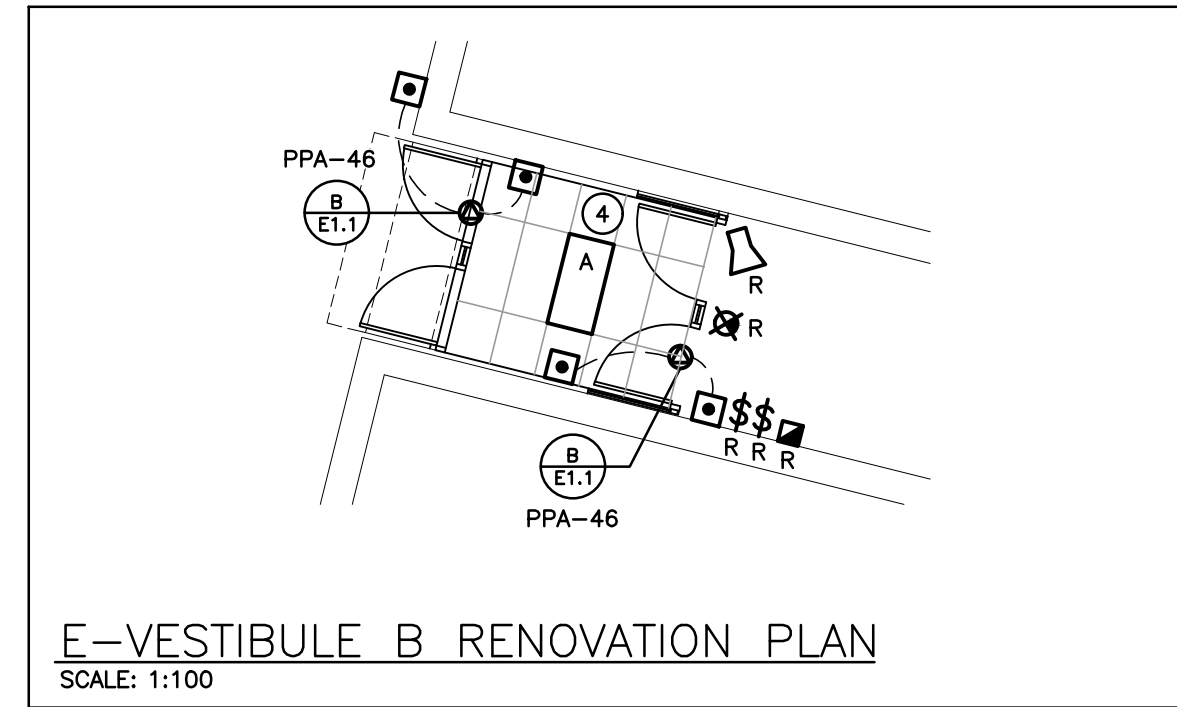
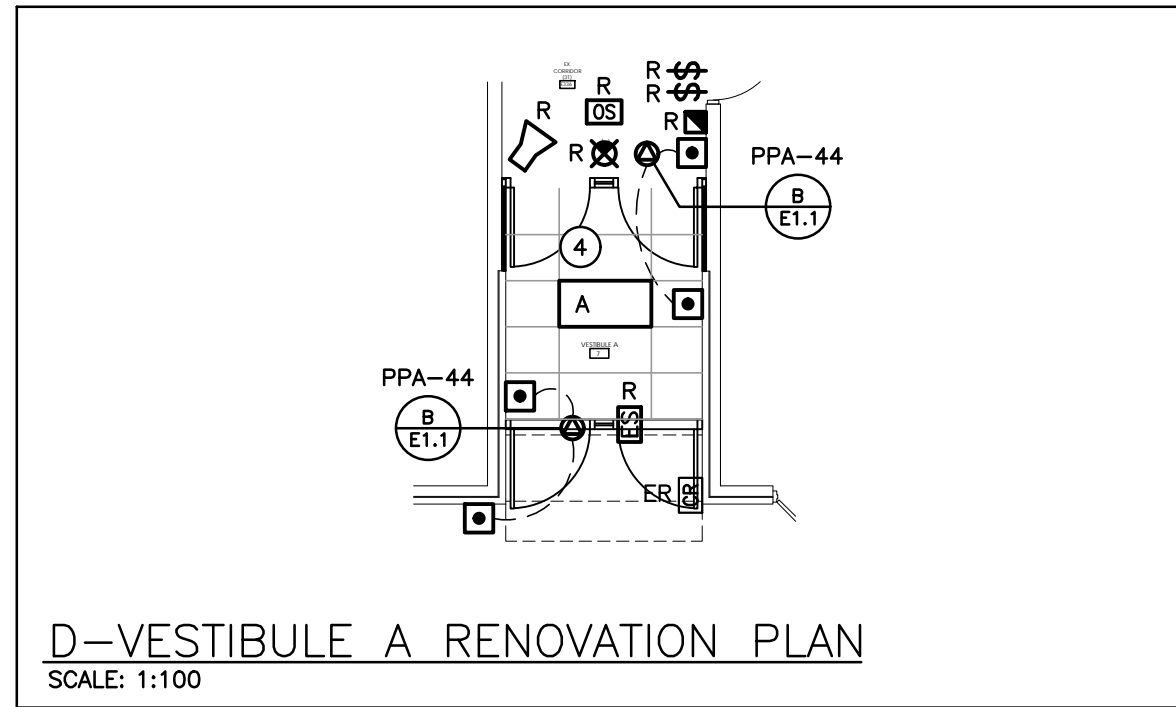
55 Northland Road, Waterloo, ON N2V 1Y8  
Phone: 519-725-3555  
Website: deiassociates.ca  
Project Number: 20298

The contractor shall verify all dimensions and report all errors and discrepancies to the Consultant before commencement of the work.  
The drawings show general arrangement of services. Follow as closely as actual building construction will permit. Obtain approval for relocation of service from Consultant before commencement of the work.  
The drawings do not indicate all offsets fitting and accessories which may be required. Provide the same to meet the required conditions.  
Drawings and specifications, etc., prepared and issued by the consultant are the property of the consultant and must be returned at the completion of the project. These documents are not to be duplicated or copied without the consent of the Consultant. Do not scale this drawing.  
© 2023 DEI & Associates Inc.

**Project Name:** CRESTVIEW P.S. RENOVATION  
**Project Location:** 153 MONTCALM DRIVE KITCHENER, ON N2B 2R6  
**Project Number:** 20298

**Client:** CRESTVIEW PUBLIC SCHOOL





**GENERAL RENOVATION NOTES**

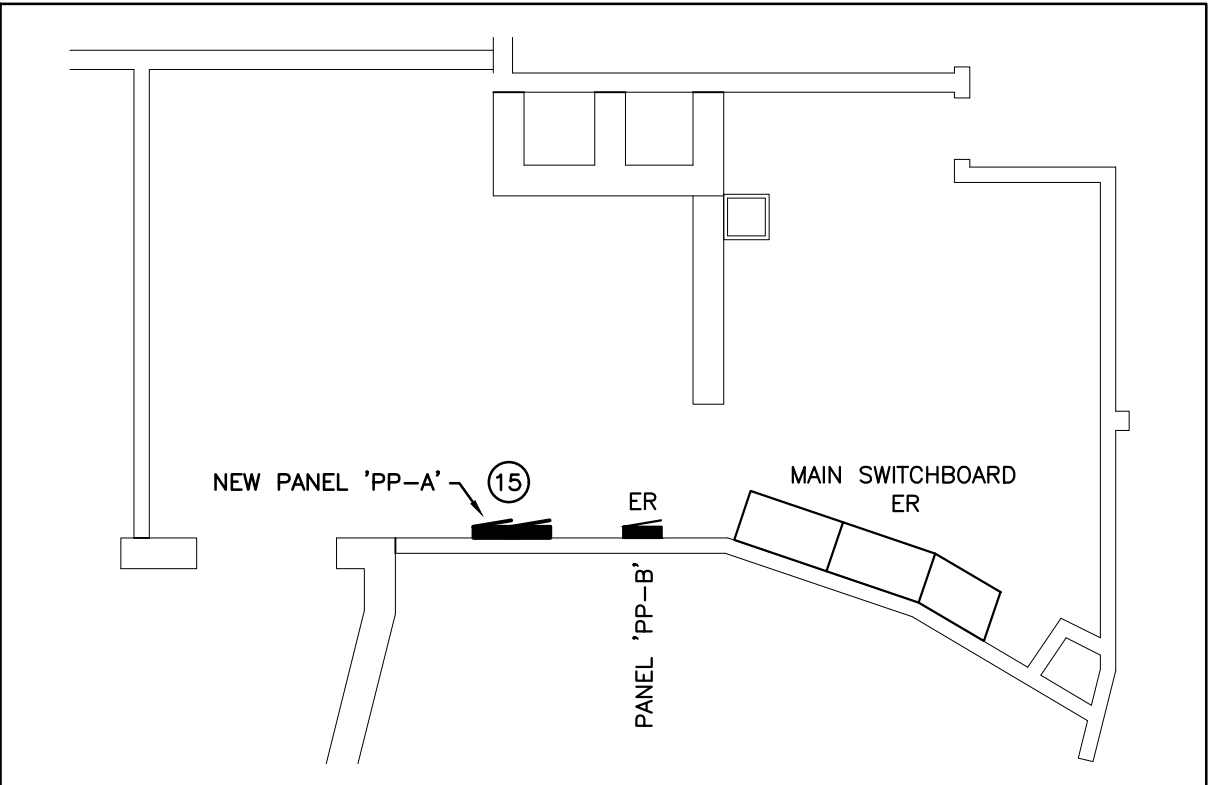
- 'ER' INDICATES EXISTING ITEM TO REMAIN.
- 'R' INDICATES EXISTING ITEM IN RELOCATED POSITION.
- ALL DEVICES SHOWN ARE NEW UNLESS OTHERWISE NOTED.
- EXISTING ELECTRICAL EQUIPMENT NOT SHOWN SHALL REMAIN UNLESS OTHERWISE NOTED.
- MAINTAIN SERVICE TO ALL EXISTING DEVICES TO REMAIN.
- REVISE PANEL DIRECTORIES TO SUIT CHANGES (TYPED).

**SPECIFIC RENOVATION NOTES**

- 1 INDICATES DEVICES FOR T.V. COORDINATE EXACT HEIGHT AND LOCATION ON SITE.
- 2 INDICATES RECEPTACLE FOR CONNECTION TO BARRIER FREE LIFT. COORDINATE EXACT LOCATION ON SITE.
- 3 INDICATES POWER PACK(S)/DIGITAL ROOM CONTROLLER(S) INSTALLED WITHIN ACCESSIBLE CEILING SPACE FOR CONTROL OF NOTED OCCUPANCY SENSOR(S).
- 4 WITHIN INDICATED AREA, CONNECT NEW LIGHTING FIXTURES TO EXISTING LIGHTING BRANCH CIRCUIT WIRING AND CONTROLS MADE AVAILABLE DURING DEMOLITION.
- 5 INDICATES DEVICES FOR TV AND AUDIO INPUTS, COORDINATE EXACT LOCATION AND HEIGHT ON SITE. PROVIDE 41mmC UP IN CEILING SPACE AND BACK TO HEAD END UNIT WITHIN CIRCULATION DESK. COORDINATE EXACT ROUTING ON SITE. RECEPTACLE TO BE REPLACED WITH TAMPER RESISTANT TYPE, REFER TO ELECTRICAL SPECIFICATIONS.
- 6 INDICATED DEVICE IS TO BE CEILING MOUNTED. PROVIDE ADEQUATE SUPPORT.
- 7 PROVIDE 3-GANG LOW VOLTAGE BACK BOX RECESSED COMPLETE WITH 1.5" EMPTY CONDUIT UP TO ACCESSIBLE CEILING SPACE FOR AV SOUND SYSTEM.
- 8 INDICATES CONNECTION FOR AUTOMATIC PLUMBING FIXTURE. PROVIDE WIRING FOR CENTRALLY MOUNTED JUNCTION BOX LOCATED WITHIN CEILING SPACE TO FEED SENSOR. COORDINATE EXACT REQUIREMENTS WITH OTHER TRADES PRIOR TO ROUGH-IN.
- 9 INDICATED DEVICES ARE TO BE MOUNTED IN MILLWORK. BRANCH CIRCUITRY FEED SHALL RUN HORIZONTALLY THROUGH MILLWORK. CONFIRM EXACT LOCATIONS ON SITE WITH MILLWORK TRADE PRIOR TO ROUGH-IN.
- 10 PROVIDE 2-GANG LOW VOLTAGE BACK BOX RECESSED COMPLETE WITH 1.5" EMPTY CONDUIT UP TO ACCESSIBLE CEILING SPACE FOR AV SOUND SYSTEM HEAD UNIT.
- 11 INDICATED MECHANICAL EQUIPMENT TO BE INTERLOCKED AND CIRCUITED THROUGH CONDENSING UNIT ON ROOF. REFER TO EQUIPMENT WIRING SCHEDULE FOR ADDITIONAL INFORMATION.
- 12 PROVIDE T-SLOT GROUND FAULT RECEPTACLE COMPLETE WITH "HEAVY DUTY IN-USE" WEATHER-PROOF COVER. COORDINATE PLACEMENT WITH MECHANICAL TRADE. INDICATED DEVICE IS TO BE MOUNTED +900mm ABOVE FINISHED ROOF LEVEL. REFER TO DETAIL D/ET.1 FOR ADDITIONAL INFORMATION.
- 13 INDICATES RECEPTACLE FOR CONNECTION TO BIDET. COORDINATE EXACT LOCATION ON SITE.
- 14 CONNECT INDICATED DEVICE TO THE LOCAL SIGNAL CIRCUIT. ALL WIRING MUST BE SUPERVISED.
- 15 ELECTRICAL CONTRACTOR TO RECONNECT TO CIRCUITS MADE AVAILABLE DURING DEMOLITION PHASE. REFER TO PANEL SCHEDULES FOR FURTHER INFORMATION. EXTEND FEEDS AS REQUIRED TO SUIT NEW PANELS. REFER TO DISTRIBUTION RISER DIAGRAM.
- 16 INDICATES NEW FIRE ALARM DETECTION DEVICE CONNECTED TO EXISTING WIRING MADE AVAILABLE DURING DEMOLITION. ALL NEW DEVICES ARE TO BE VERIFIED PER SPECIFICATIONS. REPLACEMENT DEVICE SHALL BE EDWARDS 280FL SERIES.
- 17 WITHIN INDICATED AREA, CONNECT NEW LIGHTING FIXTURES TO EXISTING LIGHTING BRANCH CIRCUIT WIRING MADE AVAILABLE DURING DEMOLITION WITH NEW LIGHTING CONTROLS.
- 18 INDICATES SOUND SYSTEM SPEAKERS TO BE CEILING MOUNTED. COORDINATE EXACT LOCATION ON SITE WITH BOARD REPRESENTATIVE.
- 19 INDICATES DEVICES FOR T.V. COORDINATE EXACT HEIGHT AND LOCATION ON SITE. PROVIDE 41mmC UP IN CEILING SPACE AND BACK TO HEAD END UNIT WITHIN CIRCULATION DESK. COORDINATE EXACT ROUTING ON SITE.
- 20 PROVIDE ALTERNATE PRICE (AP-01) TO CHANGE TYPE B LIGHT FIXTURE FROM SUSPENDED TYPE TO RECESSED. REFER TO ELECTRICAL SPECIFICATIONS SECTION FOR ALTERNATE PRICE INFORMATION AND FIXTURE SPECIFICATION.
- 21 INDICATES SINGLE GANG LOW VOLTAGE BACK BOX FOR TV INPUTS. PROVIDE 41mmC UP TO CEILING SPACE TO CONNECT TO CONDUIT IN CEILING ROUTING DOWN TO BEHIND TV AUXILIARY LOW VOLTAGE BACKBOX.

ALL RECEPTACLES OF CSA CONFIGURATION 5-15R AND 5-20R SHALL BE TAMPER-RESISTANT RECEPTACLES AND SO SHALL BE MARKED.

WHERE DEVICES ARE TO BE INSTALLED ON EXISTING WALLS IN FINISHED AREA, WHICH CANNOT BE "FISHED", INSTALL FEEDS IN A SURFACE METAL RACEWAY EQUAL TO WIREMOLD V700 SERIES. COORDINATE SURFACE INSTALLATIONS WITH CONSULTANT PRIOR TO ROUGH-IN.



**G-MAIN ELECTRICAL ROOM RENOVATION PLAN**  
SCALE: 1:100

Revision Schedule		
Particular	Date	No.
ISSUED FOR PERMIT AND TENDER	2023.03.05	1

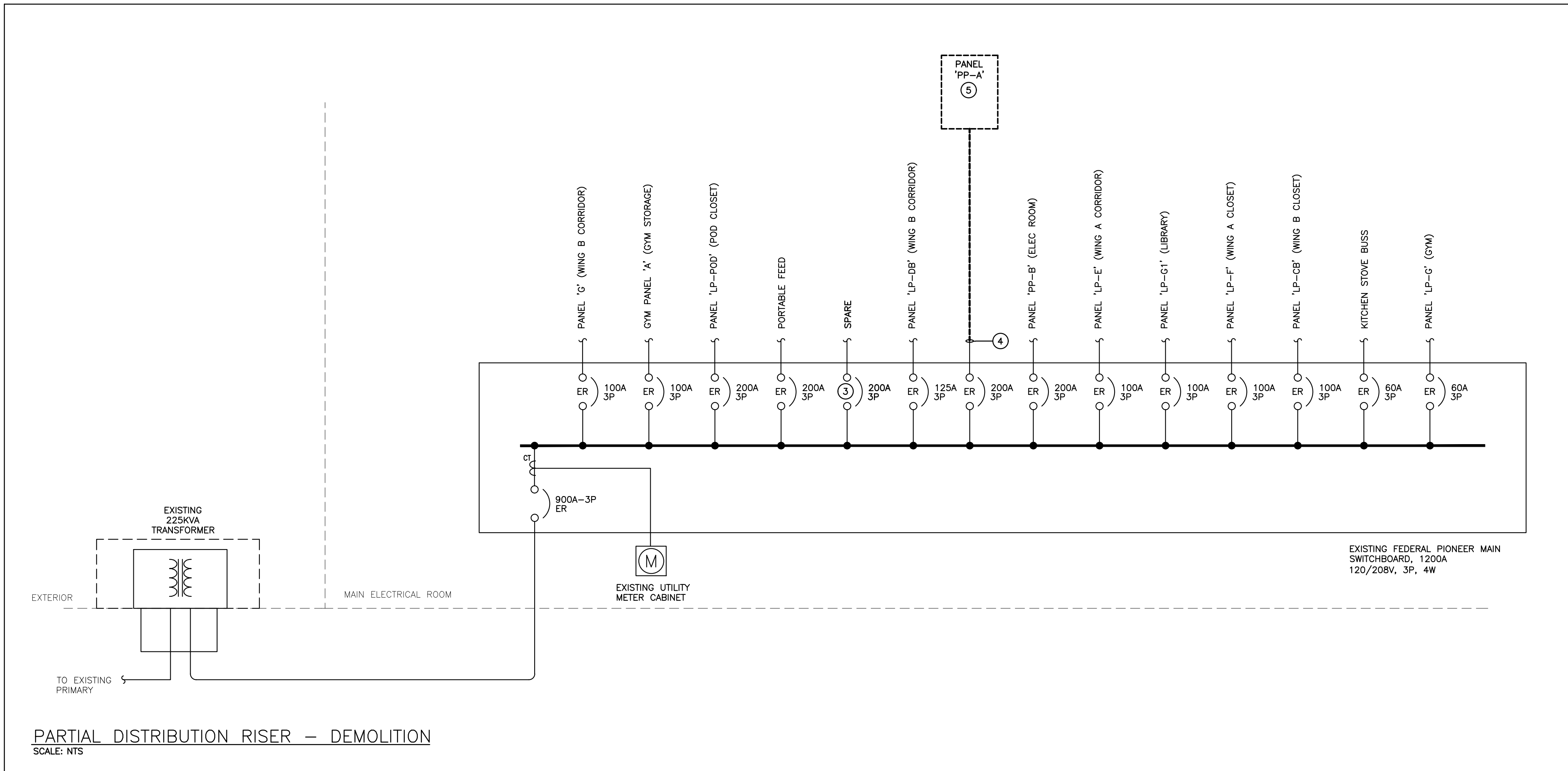


The contractor shall verify all dimensions and report all errors and discrepancies to the Consultant before commencement of the work.  
The drawings show general arrangement of services. Follow as closely as actual building construction will permit. Obtain approval for relocation of service from Consultant before commencement of the work.  
The drawings do not indicate all offsets fitting and accessories which may be required. Provide the same to meet the required conditions.  
Drawings and specifications, etc., prepared and issued by the consultant are the property of the consultant and must be returned at the completion of the project. These documents are not to be duplicated or copied without the consent of the Consultant. Do not scale this drawing.  
© 2023 DEI & Associates Inc.

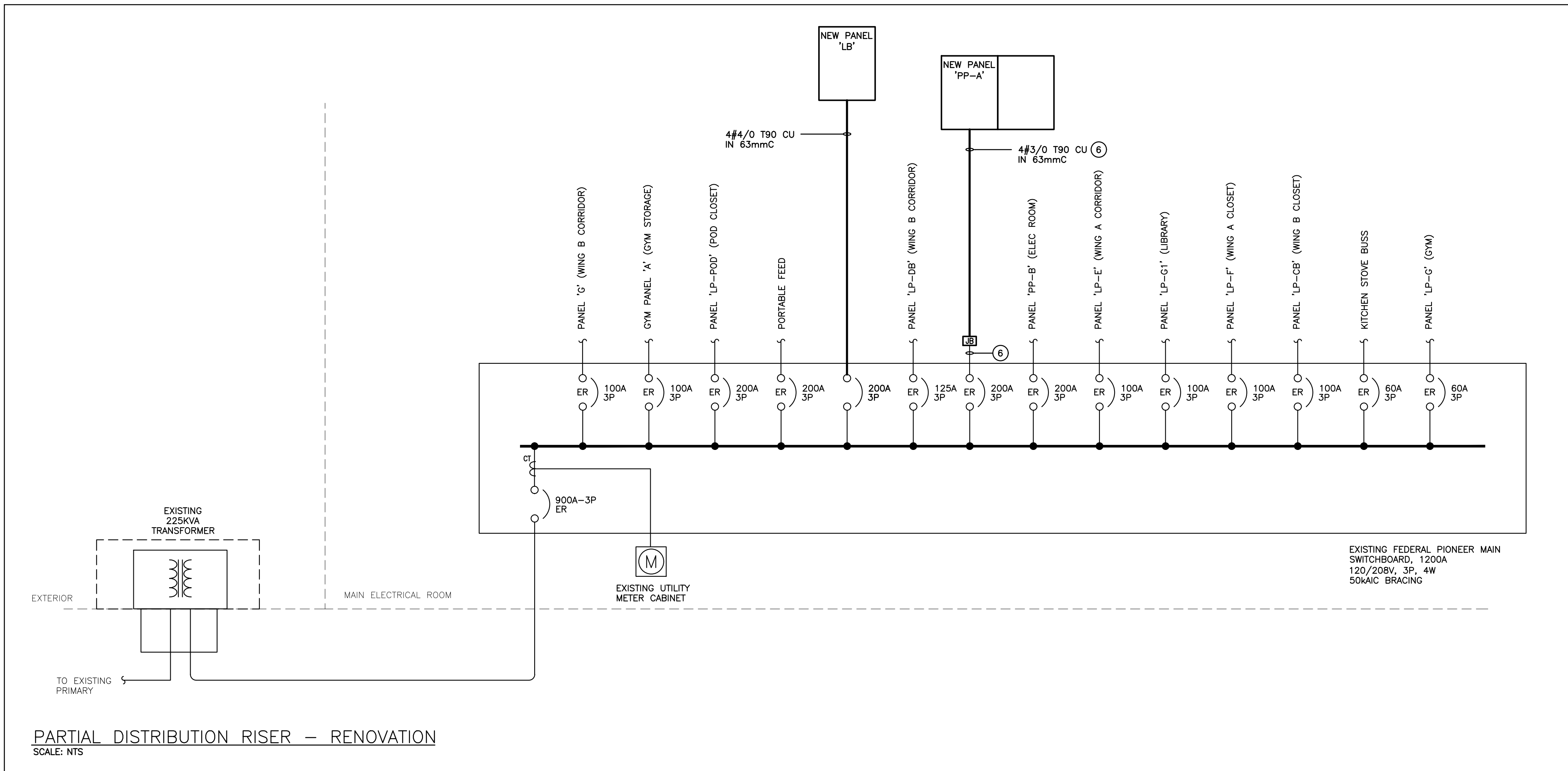
**Project Name:** CRESTVIEW P.S. RENOVATION  
**Project Location:** 153 MONTCALM DRIVE KITCHENER, ON N2B 2R6  
**Project Number:** 20298

**Client:** CRESTVIEW PUBLIC SCHOOL





- SPECIFIC NOTES**
- 1 ALL DISTRIBUTION EQUIPMENT ARE TO BE PROVIDED WITH WARNING LABELS CONFORMING TO THE ONTARIO ELECTRICAL SAFETY CODE RULE #2-306(1),(2)
  - 2 INSTALL GROUND WIRE TO SUIT THE ELECTRICAL SAFETY CODE IN ALL CONDUIT.
  - 3 UTILIZE EXISTING SPARE BREAKER TO FEED NEW PANEL AS SHOWN ON RENOVATION RISER.
  - 4 INDICATES EXISTING BRANCH FEED TO BE MAINTAINED FOR CONNECTION TO REPLACEMENT EQUIPMENT.
  - 5 INDICATES EXISTING PANEL TO BE REPLACED. DISCONNECT AND MAINTAIN ALL FEEDERS AND BRANCH WIRING FOR RECONNECTION AS PER THE RENOVATION DRAWINGS.
  - 6 INDICATES EXISTING BRANCH FEED TO BE MAINTAINED FOR CONNECTION TO REPLACEMENT EQUIPMENT. PROVIDE JUNCTION BOX AND CONDUITS FOR FEEDS TO BE EXTENDED AS REQUIRED.



Revision Schedule		
Particular	Date	No.
ISSUED FOR PERMIT AND TENDER	2023.03.05	1

**DEI**  
Consulting Engineers  
MECHANICAL | ELECTRICAL | AQUATIC

55 Northland Road, Waterloo, ON N2V 1Y8  
Phone: 519-725-3555  
Website: deiassociates.ca  
Project Number: 20298

The contractor shall verify all dimensions and report all errors and discrepancies to the Consultant before commencement of the work.  
The drawings show general arrangement of services. Follow as closely as actual building construction will permit. Obtain approval for relocation of service from Consultant before commencement of the work.  
The drawings do not indicate all offsets fitting and accessories which may be required. Provide the same to meet the required conditions.  
Drawings and specifications, etc., prepared and issued by the consultant are the property of the consultant and must be returned at the completion of the project. These documents are not to be duplicated or copied without the consent of the Consultant. Do not scale this drawing.  
© 2023 DEI & Associates Inc.

**Project Name:** CRESTVIEW P.S. RENOVATION  
**Project Location:** 153 MONTCALM DRIVE KITCHENER, ON N2B 2R6  
**Project Number:** 20298

**Client:** CRESTVIEW PUBLIC SCHOOL



**NEW PANEL 'PP-A'**

VOLTAGE: 120/208 VOLTS  
 PHASE: 3P, 4W  
 MAINS: 225A  
 NEUTRAL BUS: FULL  
 MOUNTING: SURFACE  
 NOTES: C/W SPRINKLER HOOD

\* INDICATES 33mA GROUND FAULT STYLE BREAKER

CONTRACTOR IS CONFIRM BREAKER SIZE WITHIN DEMOLISHED PANEL BEFORE ORDERING NEW BREAKER  
 THE CONTRACTOR IS TO COORDINATE ROOM NAMES AND NUMBERS NOTED WITH THE FINAL ROOM INFORMATION ISSUED DURING CONSTRUCTION AND ADJUST DIRECTORIES TO SUIT.

PUMP-4	20A	1	2	15A	PUMP-1
		3	4		
		5	6	3P	
E/L	15A	7	8	15A	PUMP-2
F/A	15A	9	10		
EXIT LTG	15A	11	12	3P	
PUMP-5	20A	13	14	15A	PUMP-3
		15	16		
		17	18	3P	
REC WORKSHOP	15A	19	20	20A	PHOTOCOPIER
MICROWAVE REC STAFF RM	15A	21	22	15A	CHUBB SECURITY
EXISTING LOAD	15A	23	24	20A	PHOTOCOPIER OFFICE
ROOF DRAIN HEATER	15A	25	26	20A	PHOTOCOPIER OFFICE
A/C V.P. OFFICE	15A	27	28	15A	SAFE WELCOME PANEL
A/C PRINCIPAL OFFICE	15A	29	30	15A	NEW UPS
A/C OFFICE MAIN	15A	31	32	15A	PUMP-6
A/C STAFF ROOM	15A	33	34	15A	PUMP-7
	2P	35	36	15A	T-SLOT/MOP SINK
DRYER	15A	37	38	15A	BOILER 1
UNIV WR 3 DOOR OPERATORS	15A	39	40	15A	BOILER 2
UNIV WR 3 PLUMBING FIXTURES	15A	41	42	15A	BOILER 3

UNIV WR 3 BIDET REC	15A	43	44	15A	VESTIBULE A DOOR OPERATORS
UNIV WR 3 LIFT REC	15A	45	46	15A	VESTIBULE B DOOR OPERATORS
UNIV WR 3 SINK REC	20A	47	48	20A	SPACE
SPACE	15A	49	50	20A	SPACE
SPACE	15A	51	52		SPACE
SPACE		53	54		SPACE
SPACE		55	56		SPACE
SPACE		57	58		SPACE
SPACE		59	60		SPACE
SPACE		61	62		SPACE
SPACE		63	64		SPACE
SPACE		65	66		SPACE
SPACE		67	68		SPACE
SPACE		69	70		SPACE
SPACE		71	72		SPACE
SPACE		73	74		SPACE
SPACE		75	76		SPACE
SPACE		77	78		SPACE
SPACE		79	80		SPACE
SPACE		81	82		SPACE
SPACE		83	84		SPACE

NOTE: THE INDICATED PANEL ASSEMBLY MUST HAVE AN INTERRUPTING CAPACITY TO MATCH EXISTING. ASSUME 22kAIC FOR BIDDING PURPOSES. PROVIDE BY EITHER FULLY RATED BREAKERS OR INTEGRATED EQUIPMENT RATING WITH THE UPSTREAM BREAKER.

**PANEL 'LB'**

VOLTAGE: 120/208 VOLTS  
 PHASE: 3P, 4W  
 MAINS: 225A  
 NEUTRAL BUS: FULL  
 MOUNTING: RECESSED  
 NOTES:

\* INDICATES 33mA GROUND FAULT STYLE BREAKER

THE CONTRACTOR IS TO COORDINATE ROOM NAMES AND NUMBERS NOTED WITH THE FINAL ROOM INFORMATION ISSUED DURING CONSTRUCTION AND ADJUST DIRECTORIES TO SUIT.

LIBRARY LIGHTING	15A	1	2	15A	LIBRARY CIRCULATION DESK REC
LIBRARY COUNTER REC	20A	3	4	20A	LIBRARY SOUND SYSTEM REC
LIBRARY/MUSIC RM TV REC	15A	5	6	15A	LIBRARY SOUND SYSTEM REC
LIBRARY TV REC	15A	7	8	15A	LIBRARY GENERAL REC
MEETING ROOM REC	15A	9	10	15A	LIBRARY DOOR OPERATOR
QUITTE ROOM REC	15A	11	12	20A	ROOFTOP MAINTENANCE REC
CONDENSING UNIT CU-1	35A	13	14	30A	CONDENSING UNIT CU-3
	2P	15	16	2P	
CONDENSING UNIT CU-2	35A	17	18	30A	CONDENSING UNIT CU-4
	2P	19	20	2P	
SPARE	15A	21	22	20A	SPARE
SPARE	15A	23	24	20A	SPARE
SPACE		25	26		SPACE
SPACE		27	28		SPACE
SPACE		29	30		SPACE
SPACE		31	32		SPACE
SPACE		33	34		SPACE
SPACE		35	36		SPACE
SPACE		37	38		SPACE
SPACE		39	40		SPACE
SPACE		41	42		SPACE

NOTE: THE INDICATED PANEL ASSEMBLY MUST HAVE AN INTERRUPTING CAPACITY OF 22000 A. PROVIDE BY EITHER FULLY RATED BREAKERS OR INTEGRATED EQUIPMENT RATING WITH THE UPSTREAM BREAKER.

Particular	Date	No.
ISSUED FOR PERMIT AND TENDER	2023.03.05	1



The contractor shall verify all dimensions and report all errors and discrepancies to the Consultant before commencement of the work.  
 The drawings show general arrangement of services. Follow as closely as actual building construction will permit. Obtain approval for relocation of service from Consultant before commencement of the work.  
 The drawings do not indicate all offsets fitting and accessories which may be required. Provide the same to meet the required conditions.  
 Drawings and specifications, etc., prepared and issued by the consultant are the property of the consultant and must be returned at the completion of the project. These documents are not to be duplicated or copied without the consent of the Consultant. Do not scale this drawing.  
 © 2023 DEI & Associates Inc.

**Project Name:** CRESTVIEW P.S. RENOVATION  
**Project Location:** 153 MONTCALM DRIVE KITCHENER, ON N2B 2R6  
**Project Number:** 20298

**Client:** CRESTVIEW PUBLIC SCHOOL

