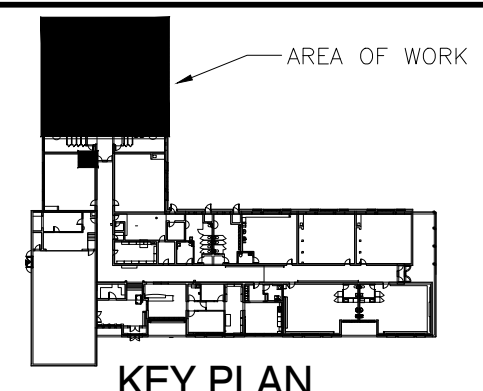




55 Northland Road, Waterloo, ON N2V 1Y8  
 Phone: 519-725-3555  
 Website: deiassociates.ca  
 Project Number: 25400

The contractor shall verify all dimensions and report all errors and discrepancies to the Consultant before commencement of the work.  
 The drawings show general arrangement of services. Follow as closely as actual building construction will permit. Obtain approval for relocation of service from Consultant before commencement of the work.  
 The drawings do not indicate all offsets fitting and accessories which may be required. Provide the same to meet the required conditions.  
 Drawings and specifications, etc., prepared and issued by the Consultant are the property of the Consultant and must be returned at the completion of the project. These documents are not to be duplicated or copied without the consent of the Consultant.  
 Do not scale this drawing.  
 © 2026 DEI Consulting Engineers Inc.

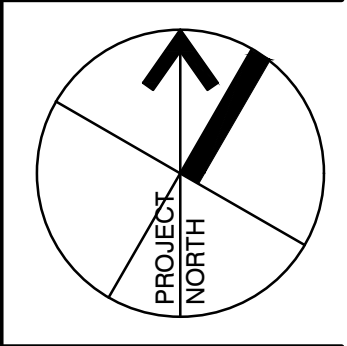


Professional Engineers Ontario  
 Limited Engineering Licensee  
 Name: D.G. MCCONKEY  
 Number: 100220476  
 Limitations: Detailed design, reporting, and specifications for all building electrical systems, site servicing and review of conformity for these systems in new and renovation construction.  
 Association of Professional Engineers of Ontario

NO	DATE	ISSUE	BY
4	26.02.20	ISSUED FOR TENDER	DM
3	26.02.18	ISSUED FOR COORDINATION	DM
2	26.02.06	ISSUED FOR PERMIT	DM
1	26.01.23	ISSUED FOR COORDINATION	DM

**MARTIN SIMMONS SWEERS**

200 - 113 Breithaupt Street  
 Kitchener, ON N2H 5G9  
 t 519.745.4754 f 519.745.0061



PROJECT  
**WINSTON CHURCHILL P.S. ROOF REPLACMENT**

WRDSB  
 DRAWING

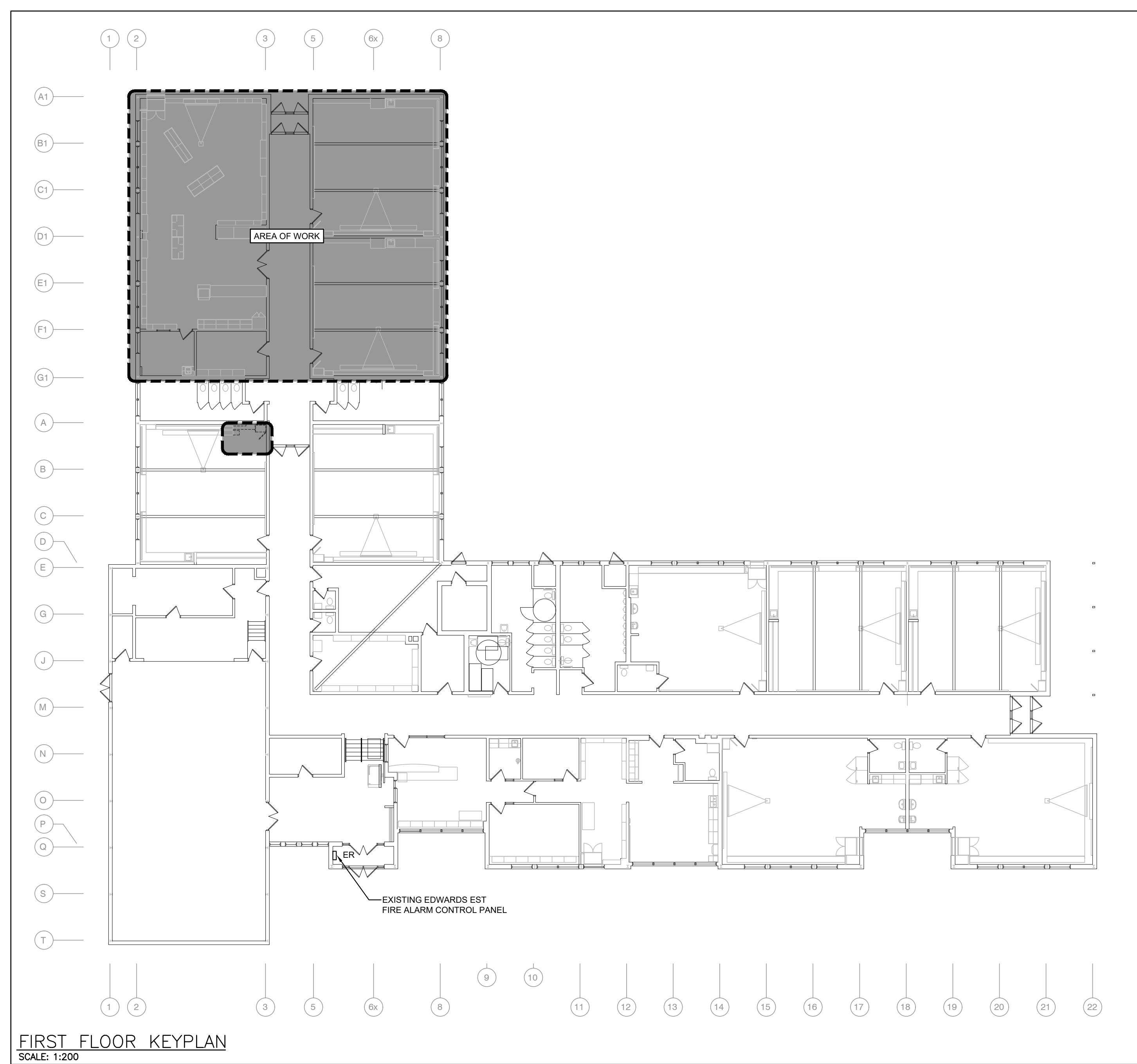
**FIRST FLOOR KEYPLAN AND LEGEND**

DRAWN BY: CT CHECKED BY: DM

DATE: February 20, 2026

SCALE: AS NOTED DRAWING NO: E101

PROJECT NO: 25054

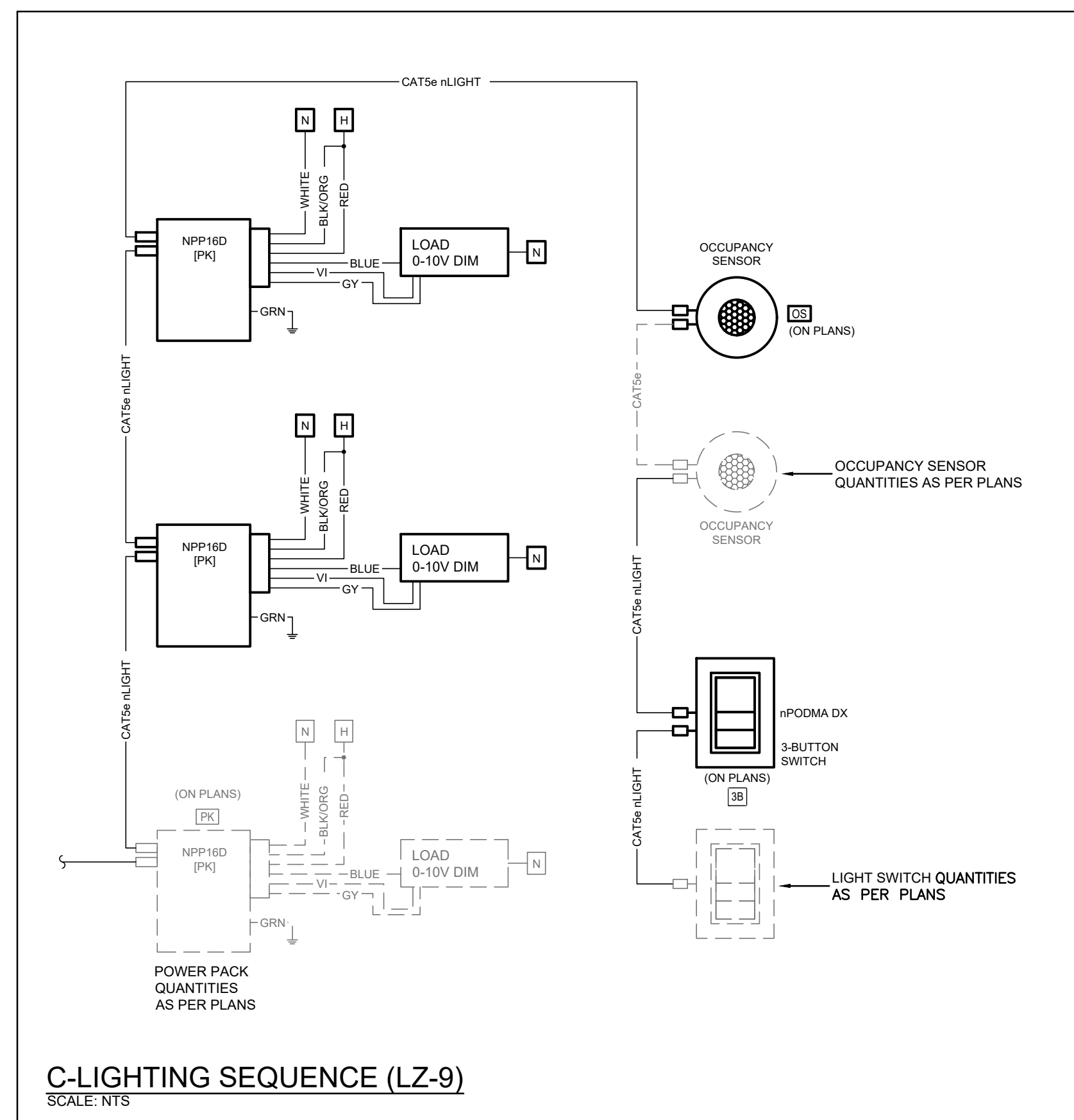
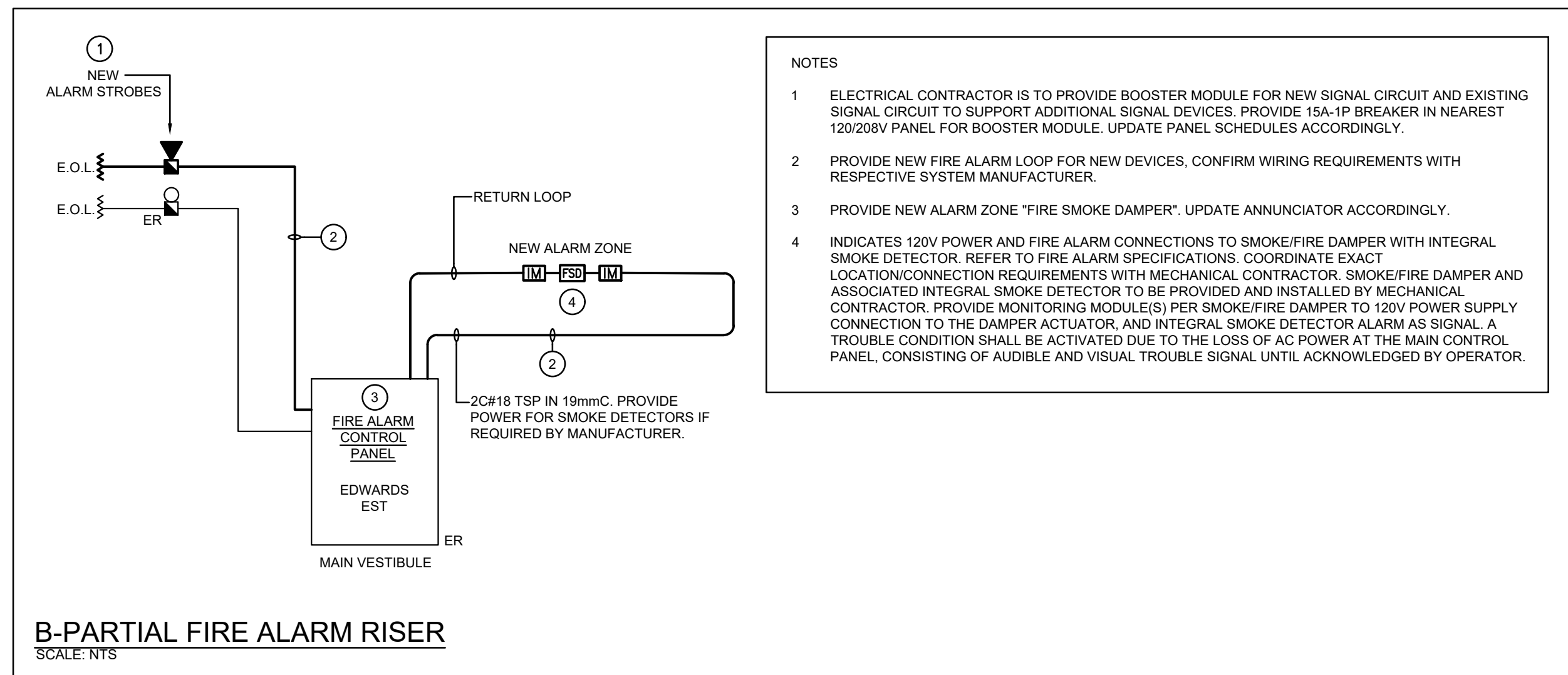
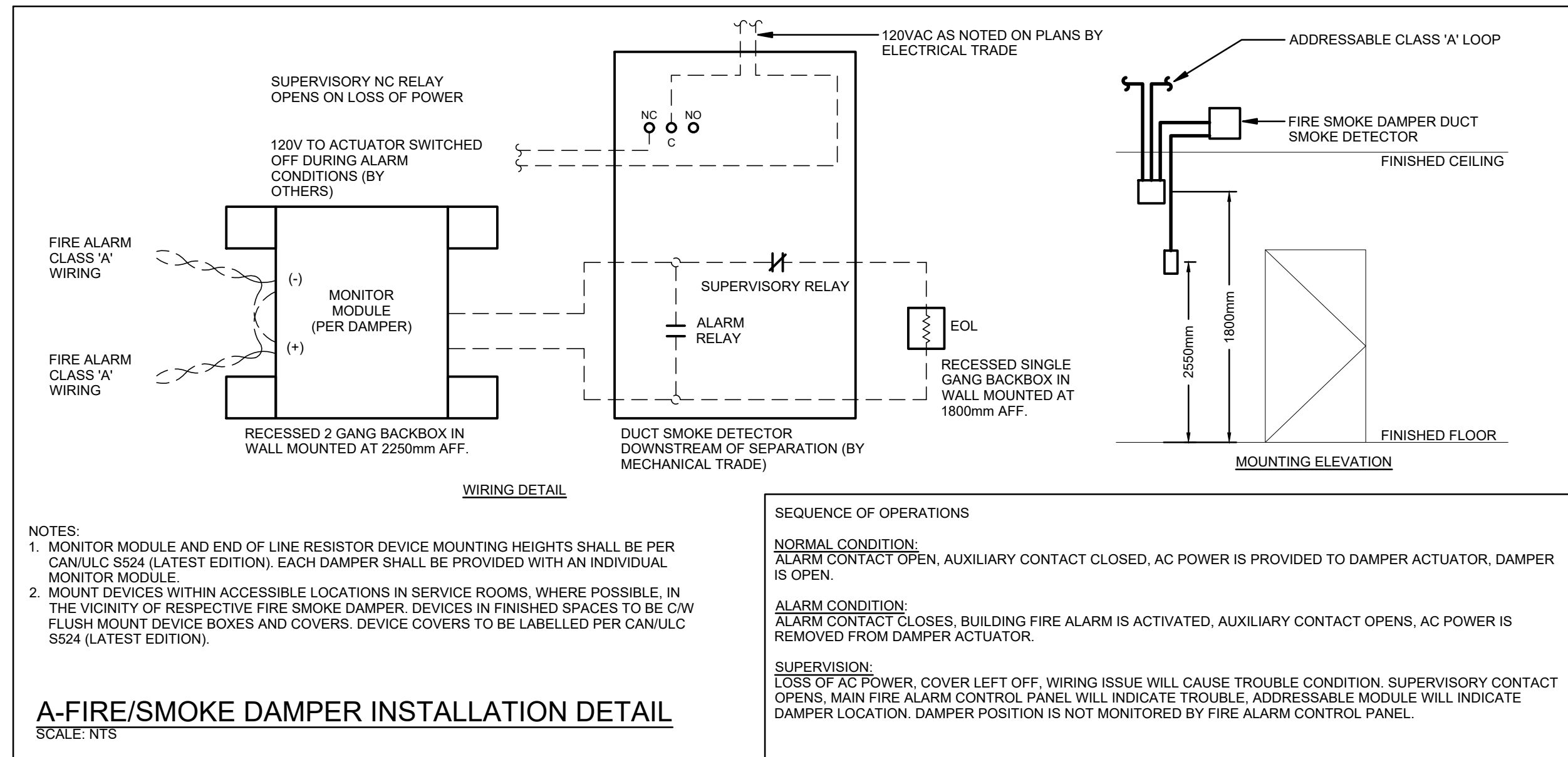


Item	Manufacturer/Catalog Number	Voltage	Lamp				Mounting	Listings	Description	
			Type	Lumens	Color Temperature	Wattage				
A	COOPER CAT. 40AC075-14V LITHONIA CAT. 80PX 234 ALB 50W7 SWL 120 SIGNIFY CAT. 40SP50050504-40X03M	120V	LED	3962	4000K	47.8W	80	RECESSED	N/A	2'x6' (610mmx1200mm) LED BACKLIT FLAT PANEL FIXTURE C/W FIELD SELECTABLE LUMENS AND COLOUR TEMPERATURE, WHITE FROSTED LENS, 10% 0-10V DIMMING DRIVER, AND WHITE FINISH.
B	COOPER CAT. 42-RL-4L-4B-1-D-DUM-STD-W-AC120-LUM-4 LITHONIA CAT. 40R2-LS-4AB-8-800-6-0100LUF-4000-MINI-1-120V-SCT-F1-144A-C210 AXIS CAT. FCUBLED-SL-75-40-40-50-4-W-100-CP-1-X-X	120V	LED	1092LM/FT	4000K	17W/FT	80	SUSPENDED	N/A	4' (1220mm) LONG DIRECT (70%) / INDIRECT (30%) SUSPENDED LINEAR LUMINAIRE C/W 1% 0-10V DIMMING DRIVER, AND ADJUSTABLE CABLE LENGTH. STANDARD FINISH TO BE SELECTED BY ARCHITECT.
W	COOPER CAT. 85T-5A19-730-9-5L2-XX LITHONIA CAT. 4WV02Z LED 94 30K 70CR 12M 120 SRM XXXXX SIGNIFY CAT. 40M-402-650-1M-10	120V	LED	343M	3000K	25.4W	80	WALL	PNL (DABUG)	COMPLETE CUT OFF TRIANGULAR LED WALLPACK FIXTURE C/W TYPE 'Z' WITH SPILL CONTROL DISTRIBUTION, FULL CUTOFF DARK SKY COMPLIANCE (84), 4000K DRIVER, AND FINISH TO SUIT ARCHITECT. MOUNT FIXTURE AT HEIGHT AS INDICATED ON ARCHITECTURAL ELEVATIONS.
EXIT LIGHTS	AMULTE CAT. #P9ALUMINUM10VDC STANPRO CAT. #R0ALWHL00C LUMACELL CAT. #L430XUX	120V/20V	LED	-	-	-	N/A	SURFACE	N/A	LED EXTRUDED ALUMINUM PICTOGRAM FIXTURE C/W GREEN FACE AND WHITE LEGEND. UNIVERSAL MOUNTING TO SUIT WALL, END OR CEILING, AND MAXIMUM 2.2" (56mm) THICKNESS. FACES AND CHEVRONS TO SUIT DRAWINGS.
COMBO UNIT	AMULTE CAT. #6490A SERIES EM-1-#CAMP1200R200MALLATD EM-2-#CAMP1200R200MALLATD STANPRO CAT. #PR0AL SERIES EM-1-#PR0AL1051-2N4L-LAT EM-2-#PR0AL1051-2N4L-LAT LUMACELL CAT. #L4C SERIES EM-1-#L4C0W1200D10ATN EM-2-#L4C0W1200D10ATN	120V/20V	LED	-	-	-	N/A	SURFACE	N/A	LED EXTRUDED ALUMINUM PICTOGRAM FIXTURE C/W GREEN FACE AND WHITE LEGEND. UNIVERSAL MOUNTING TO SUIT WALL, END OR CEILING, MAXIMUM 2.2" (56mm) THICKNESS. 2V INTERNAL SEALED RECHARGEABLE BATTERY PROVIDING MINIMUM EMERGENCY VOLTAGE AS NOTED BY THE CATALOG NUMBER AND AUTOTEST FEATURE. INTERNAL 10V LED HEADS TO HAVE CONTACT DESIGN WITH WHITE COLOUR, FULL ARMING ADJUSTMENT, AND 360° ROTATION, WHERE NOTED UNIT SHALL BE C/W WIREGUARD, FACES AND CHEVRONS TO SUIT DRAWINGS.
EMERG. BATT. (LINEAR STYLE)	AMULTE #E16V SERIES EM-1-#E16V1200R200MALLATD STANPRO CAT. #PRV SERIES EM-1-#PRV1200R200MALLATD LUMACELL #L6 SERIES EM-1-#L6L-EM C/W HT-0RL	120V	LED	-	-	14W	N/A	RECESSED	N/A	LONG LIFE, SEALED RECHARGEABLE VANDAL RESISTANT BATTERY C/W ADJUSTABLE 14W LED MODULES, POLYCARBONATE BODY, 90 MINUTE BATTERY DURATION, RECESSED 1.6M MOUNTING, AND AUTOTEST FEATURE.

Notes:  
 1. LED LUMEN VALUES QUOTED FOR FIXTURES ARE TO BE CONSIDERED MINIMUM AND AS ABSOLUTE OR DELIVERED LUMENS. LUMEN VALUES SHOULD NOT EXCEED MORE THAN 10% OF SPECIFIED OUTPUT.  
 2. TENDER PRICE TO INCLUDE ONLY APPROVED MANUFACTURERS LISTED ON SCHEDULE. EQUAL MANUFACTURERS ARE NOT BEING CONSIDERED FOR THIS TENDER UNLESS SPECIFICALLY IDENTIFIED ON SCHEDULE FOR NOTED APPROVED EQUALS TO BE CONSIDERED APPROVED. MANUFACTURERS/SUPPLIERS MUST CONFIRM THE PROPOSED EQUAL BY EMAIL WITH CONSULTANTS OFFICE PRIOR TO PROJECT AWARD/PERIOD CLOSE.  
 3. WHERE NOTED ABOVE THAT FIXTURES ARE TO HAVE FINISH TO SUIT ARCHITECT THE FINISH WILL BE SELECTED FROM MANUFACTURER'S AVAILABLE STANDARD FINISHES.  
 4. IF IT IS THE RESPONSIBILITY OF THIS ELECTRICAL CONTRACTOR TO IDENTIFY TO THE ELECTRICAL CONSULTANT'S ATTENTION ANY DISCREPANCIES BETWEEN THE FIXTURE CATALOG NUMBER AND FIXTURE DESCRIPTION, AND/OR VOLTAGE, OUTPUT, OR MOUNTING, PRIOR TO TENDER CLOSE, NO EXTRAS WILL BE ENTERTAINED FOR FAILURE TO DO SO. FINAL FIXTURE CHARACTERISTICS AND DESCRIPTION WILL BE MARKED BY CONSULTANT AT THE TIME OF SHOP DRAWING REVIEW, FOR THE PURPOSES OF BIDDING, INCLUDE FOR A FIXTURE MATCHING THE VOLTAGE, MOUNTING, LOCATION AND NOTATIONS SHOWN ON LIGHTING DESIGN DRAWINGS.

**ELECTRICAL SYMBOLS** NOTE: ALL SYMBOLS MAY NOT BE USED

COMMUNICATIONS	LIGHTING	POWER
▼ SINGLE WALL MOUNTED TELEPHONE OUTLET C/W 1/2" (13mm) C TO CABLE MANAGEMENT SYSTEM.	☒ LIGHT FIXTURE TYPE AS INDICATED	Ⓜ WALL MOUNTED RECEPTACLE (15A-120V)
▽ SINGLE COMPUTER OUTLET C/W 1/2" (13mm) C TO CABLE MANAGEMENT SYSTEM.	☒ LIGHT FIXTURE (HATCHING DENOTES NIGHTLIGHT)	Ⓜ WALL MOUNTED T-SLOT RECEPTACLE (20A-120V)
▽ COMBINATION SINGLE VOICE/ SINGLE COMPUTER OUTLET UNLESS OTHERWISE NOTED C/W 1" (27mm) C TO CABLE MANAGEMENT SYSTEM.	☒ COMBINATION EMERGENCY/EXIT TYPE AS INDICATED (EM-X INDICATES BATTERY UNIT TYPE, DC-X INDICATES DC CIRCUIT, AND X-X INDICATES AC SOURCE CIRCUIT)	Ⓜ T-SLOT RECEPTACLE MTD. ABOVE COUNTER (20A-120V)
▽ WIRELESS ACCESS POINT. PROVIDE 1/2" (13mm) C TO CABLE MANAGEMENT SYSTEM.	☒ CEILING OR WALL MOUNTED LIGHT FIXTURE TYPE AS INDICATED	Ⓜ RECEPTACLE MTD. ABOVE COUNTER S-SPLIT (15A-120V)
⌚ CLOCK AS PER SPECIFICATIONS	☒ WALL MOUNTED EXIT LIGHT SHADING INDICATES FACE	Ⓜ STOVE RECEPTACLE
Ⓜ TELEVISION OUTLET C/W 1" C (27mm) TO CABLE MANAGEMENT SYSTEM.	☒ CEILING MOUNTED EXIT LIGHT ARROWS DENOTE DIRECTION SHADING INDICATES FACE	Ⓜ DRYER RECEPTACLE
Ⓜ HANGER SYSTEM (REFER TO DETAILS)	☒ SINGLE OR TWIN EMERGENCY LIGHTING FIXTURE	Ⓜ SPECIAL RECEPTACLE
▽ ADMINISTRATIVE CONTROL CONSOLE	☒ CEILING RECESSED BATTERY UNIT C/W INTEGRAL EMERGENCY FIXTURES	Ⓜ QUAD RECEPTACLE
Ⓜ HANDSET (ND = NON-DIAL STYLE)	☒ BATTERY UNIT WITH INTEGRAL EMERGENCY FIXTURE (EM-X INDICATES BATTERY UNIT TYPE, DC-X INDICATES DC CIRCUIT, AND X-X INDICATES AC SOURCE CIRCUIT)	Ⓜ DIRECT CONNECTION
Ⓜ P.A. CALL SWITCH	☒ SINGLE POLE SWITCH (3-3 WAY, 4-4 WAY, P=PILOT LIGHT, K=KEYED, DM=DIMMER, M=MOTOR RATED)	Ⓜ JUNCTION BOX
▽ WALL MOUNTED SPEAKER (CS=COLUMN SPEAKER)	Ⓜ WALL MOUNTED SPEAKER C/W CALL-IN SWITCH	Ⓜ PULLBOX
▽ CEILING MOUNTED SPEAKER	Ⓜ CEILING MOUNTED MOTION SENSOR	Ⓜ PANEL AS INDICATED
Ⓜ PROGRAM BELL	Ⓜ WALL MOUNTED MOTION SENSOR	Ⓜ TIME CLOCK
▽ HORN SPEAKER	Ⓜ DIGITAL ROOM CONTROLLER	Ⓜ 0-15 MINUTE INTERVAL TIMER
Ⓜ MICROPHONE OUTLET	Ⓜ PHOTOCELL	Ⓜ DESTRATIFICATION FAN
Ⓜ DOOR BELL	Ⓜ DIGITAL WALL DIMMER STATION	Ⓜ SURFACE RACEWAY C/W DEVICES AS NOTED (REFER TO SPECIFICATIONS)
Ⓜ AUXILIARY ROUGH-IN FOR USE AS NOTED	Ⓜ LIGHTING NETWORK BRIDGE	Ⓜ HAND DRYER
STANDARD CIRCUIT LABELING	Ⓜ EMERGENCY LIGHTING RELAY	Ⓜ PUSH-BUTTON STATION (QUANTITY OF BUTTONS AS PER PLANS)
POWER PANEL LABEL CIRCUIT INDICATION SWITCH LEG (IF APPLICABLE)	Ⓜ LIGHTING INPUT/OUTPUT RELAY	Ⓜ CONTACTOR
	Ⓜ ANALOG POWER PACK	Ⓜ MOTOR CONNECTION
GENERAL	FIRE ALARM	Ⓜ TRANSFORMER
ER INDICATED EXISTING ITEM TO REMAIN	Ⓜ HEAT DETECTOR (135 DEGREE RATE OF RISE AND FIXED TEMPERATURE)	SECURITY
D INDICATES EXISTING ITEM TO BE DELETED	Ⓜ DUCT TYPE SMOKE DETECTOR	Ⓜ SECURITY DETECTOR (SURFACE MOUNTED)
R INDICATES EXISTING ITEM TO BE RELOCATED/IN RELOCATED POSITION	Ⓜ SMOKE DETECTOR (RL=RELAY BASE)	Ⓜ CEILING MOUNTED CAMERA
WG WIREGUARD	Ⓜ SMOKE ALARM C/W BATTERY BACK UP AND INTEGRAL STROBE LIGHT (CO INDICATES 3 IN 1 CARBON MONOXIDE/STROBE/SMOKE ALARM)	Ⓜ SECURITY KEYPAD (INSTALL 1100mm AFF) C/W 19mmC TO NEAREST SECURITY JUNCTION BOX
GF GROUND FAULT	Ⓜ PULLSTATION	Ⓜ DOOR CONTACT C/W 19mmC TO NEAREST SECURITY JUNCTION BOX (REFER TO DETAIL)
WP WEATHERPROOF	Ⓜ ALARM BELL	ACCES CONTROL
SR SURGE PROTECTED	Ⓜ ALARM STROBE	Ⓜ MAG LOCK
TR TAMPER RESISTANT	Ⓜ END-OF-LINE RESISTOR	Ⓜ ELECTRIC STRIKE. CONFIRM ROUGHIN WITH DOOR HARDWARE.
CLG CEILING MOUNTED	Ⓜ DOOR HOLD OPEN DEVICE	Ⓜ "PUSH-TO-LOCK" BUTTON
Ⓜ NOTE INDICATOR	Ⓜ FIRE SMOKE DAMPER	Ⓜ EMERGENCY PUSH BUTTON STATION
Ⓜ MECHANICAL ITEM NO.	Ⓜ FIREFIGHTER'S HANDSET	Ⓜ "ASSISTANCE REQUIRED" DOME LIGHT WITH SOUNDER
Ⓜ OWNERS EQUIPMENT ITEM NO.		Ⓜ "ASSISTANCE REQUIRED" INDICATOR LIGHT WITH SOUNDER
		Ⓜ CARD/FOB READER ROUGH-IN AS A SINGLE GANG BOX AT 1100mm AFF C/W 13mmC TO ELECTRIC STRIKE IN ADJACENT DOOR FRAME. CONFIRM ROUGH-IN WITH DOOR HARDWARE.



### FIRE ALARM SEQUENCE OF OPERATIONS

FIRE ALARM SEQUENCE OF OPERATION - SINGLE STAGE:

THE FIRE ALARM SYSTEM SHALL BE A SINGLE STAGE SYSTEM CONSISTING OF CONTROL PANEL(S), REMOTE ANNUNCIATOR(S), NOTIFICATION DEVICES, ALARM INITIATING DEVICES, SUPERVISORY INITIATING DEVICES, AND AUXILIARY CONNECTIONS AS INDICATED ON ELECTRICAL DESIGN DRAWINGS AND SPECIFICATIONS.

**ALARM ACTIVATION**

- UPON ACTIVATION OF ANY ALARM INITIATING DEVICE (MANUAL STATION, HEAT DETECTOR, SMOKE DETECTOR, DUCT DETECTOR, SPRINKLER WATER FLOW DEVICE, SUPPRESSION SYSTEM, ETC.) SHALL CAUSE THE FOLLOWING FIRE ALARM SYSTEM ALARM ACTIONS:
  - ACTIVATE THE RESPECTIVE RED ALARM LED AT THE CONTROL PANEL(S) AND REMOTE ANNUNCIATOR PANEL(S).
  - CAUSE ZONE OF ALARM INITIATING DEVICE TO BE INDICATED AT THE CONTROL PANEL(S) AND REMOTE ANNUNCIATOR PANEL(S).
  - CAUSE AUXILIARY CONTACTS TO ACTIVATE AND INITIATE ELEVATOR RECALL PER CSA-B44 (EXCLUDING ALARM INITIATED BY MANUAL PULL STATIONS).
  - CAUSE AUXILIARY CONTACTS TO ACTIVATE AIR-HANDLING UNIT SHUT DOWN (EXCLUDING MUA FOR CORRIDORS SERVING SUITES OF RESIDENTIAL OCCUPANCY WHICH SHALL NOT AUTOMATICALLY SHUT DOWN).
  - CAUSE AUXILIARY CONTACTS TO ACTIVATE AND ELECTRO-MAGNETICALLY HELD OPEN DOORS TO CLOSE AUTOMATICALLY.
  - CAUSE AUXILIARY CONTACTS TO SIGNAL H/LS FANS TO SHUT/DOWN (ON INITIATION SIGNAL FROM SPRINKLER WATER FLOW DEVICE WITHIN FLOOR AREA H/LS FAN SERVES).
  - ACTIVATE THE COMMON ALARM POINT TO SIGNAL THE LOCAL FIRE DEPARTMENT OR APPROVED CENTRAL MONITORING AGENCY OF THE ALARM CONDITION.
  - CAUSE THE ALARM AUDIBLE NOTIFICATION DEVICES TO SOUND A TEMPORAL PATTERN THROUGHOUT THE BUILDING UNTIL SILENCED.
  - CAUSE THE VISUAL NOTIFICATION DEVICES TO ACTIVATE THROUGHOUT THE BUILDING UNTIL AUDIBLE ALARM IS SILENCED OR SYSTEM RESET.
  - LOG THE ALARM EVENT IN THE HISTORICAL EVENT LOG FILE.
  - CAUSE AUXILIARY CONTACTS TO ACTIVATE AND SIGNAL FIRE ALARM SYSTEM TROUBLE STATUS TO BAS.

**SUPERVISORY ACTIVATION**

- OPERATION OF ANY SUPERVISORY INITIATING DEVICE (SPRINKLER SHUT-OFF VALVE OR LOW-PRESSURE SWITCH, DUCT DETECTOR HEATER LOSS OF AC POWER, GENERATOR RUNNING OR TROUBLE CONTACT, FIRE PUMP RUNNING, HEAT TRACING OF SPRINKLER/STANDPIPE, SNOW MELT FOR EXIT PATH, ETC.) SHALL CAUSE THE FOLLOWING FIRE ALARM SYSTEM SUPERVISORY ACTIONS:
  - CAUSE A SUPERVISORY ALARM TO LATCH INTO THE SYSTEM.
  - ACTIVATE THE RESPECTIVE YELLOW SUPERVISORY LED AT THE CONTROL PANEL(S) AND REMOTE ANNUNCIATOR PANEL(S).
  - CAUSE ZONE OF SUPERVISORY INITIATING DEVICE TO BE INDICATED AT THE CONTROL PANEL(S) AND REMOTE ANNUNCIATOR PANEL(S).
  - ACTIVATE THE COMMON SUPERVISORY POINT TO SIGNAL THE LOCAL FIRE DEPARTMENT OR APPROVED CENTRAL MONITORING AGENCY OF THE SUPERVISORY CONDITION.
  - SOUND THE AUDIBLE CONTROL PANEL BUZZER.
  - LOG THE ALARM EVENT IN THE HISTORICAL EVENT LOG FILE.
  - CAUSE AUXILIARY CONTACTS TO ACTIVATE AND SIGNAL FIRE ALARM SYSTEM TROUBLE STATUS TO BAS.

**TROUBLE ACTIVATION**

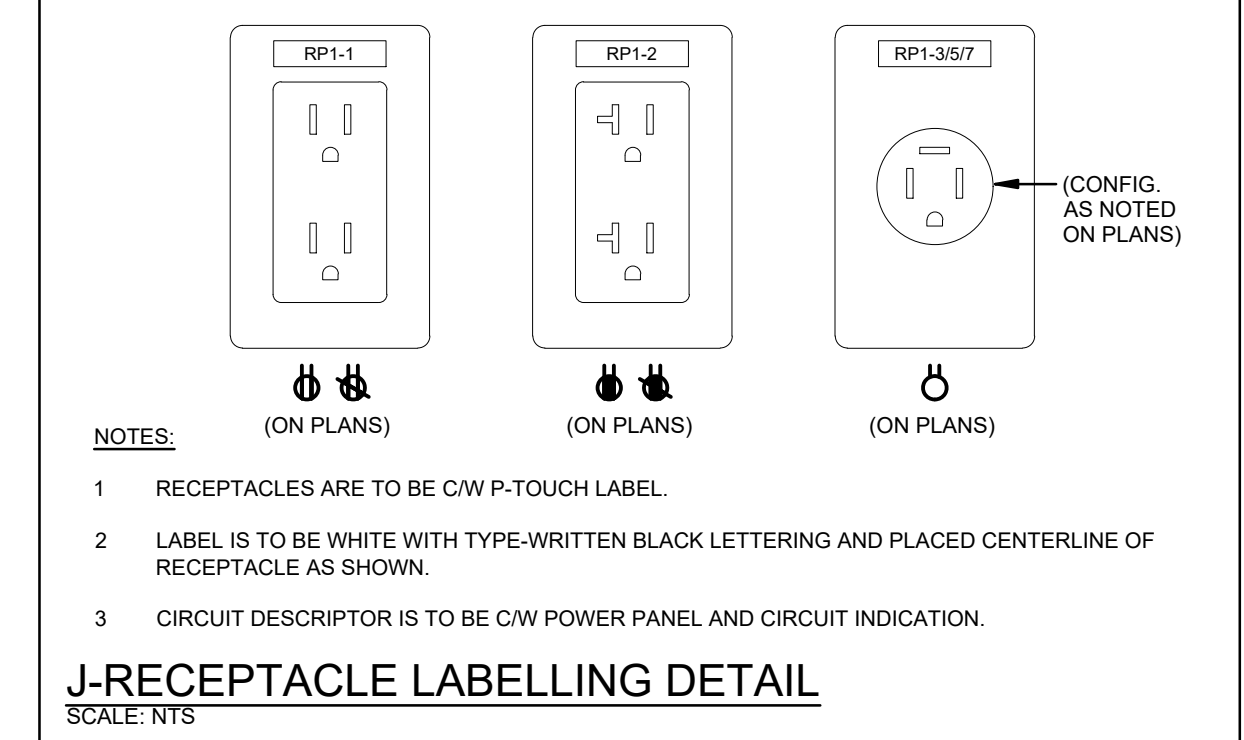
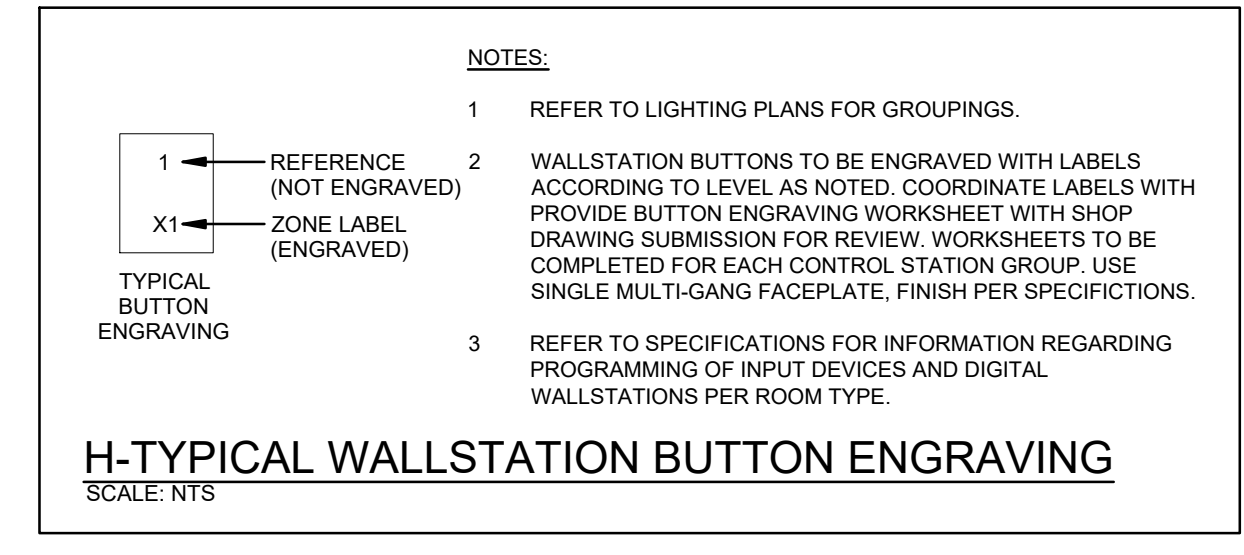
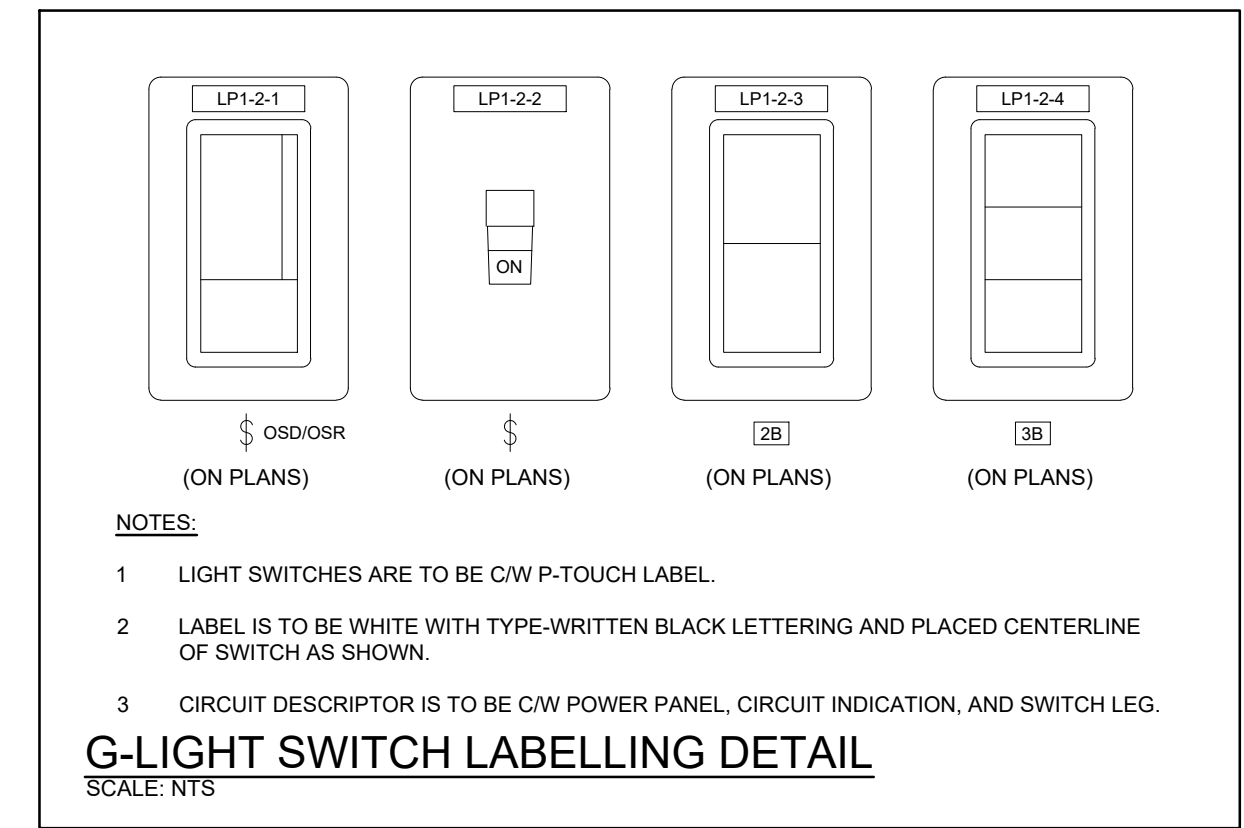
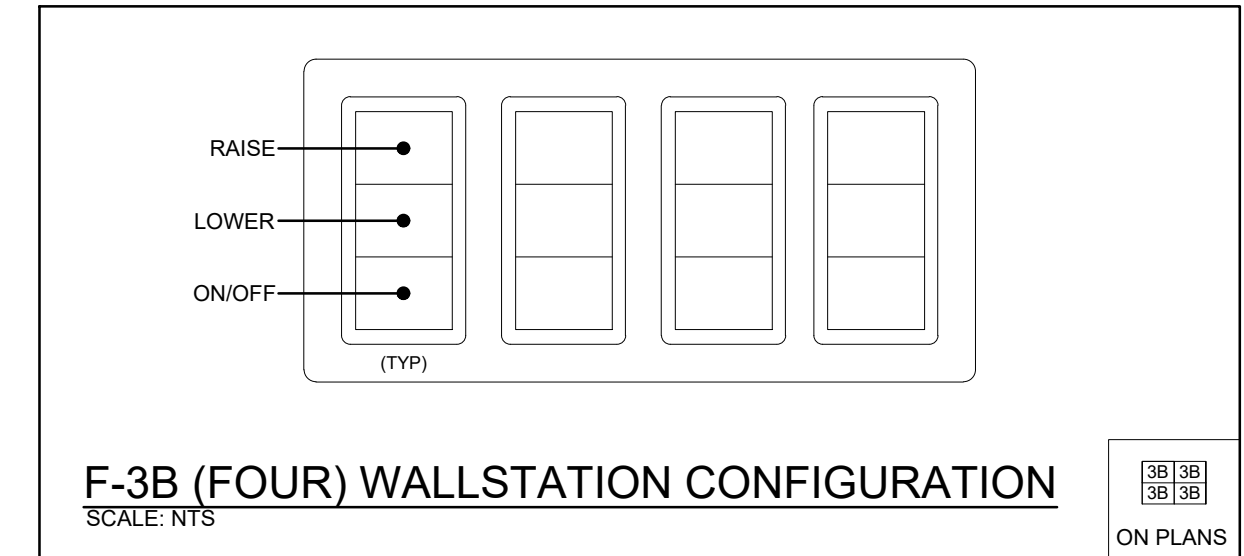
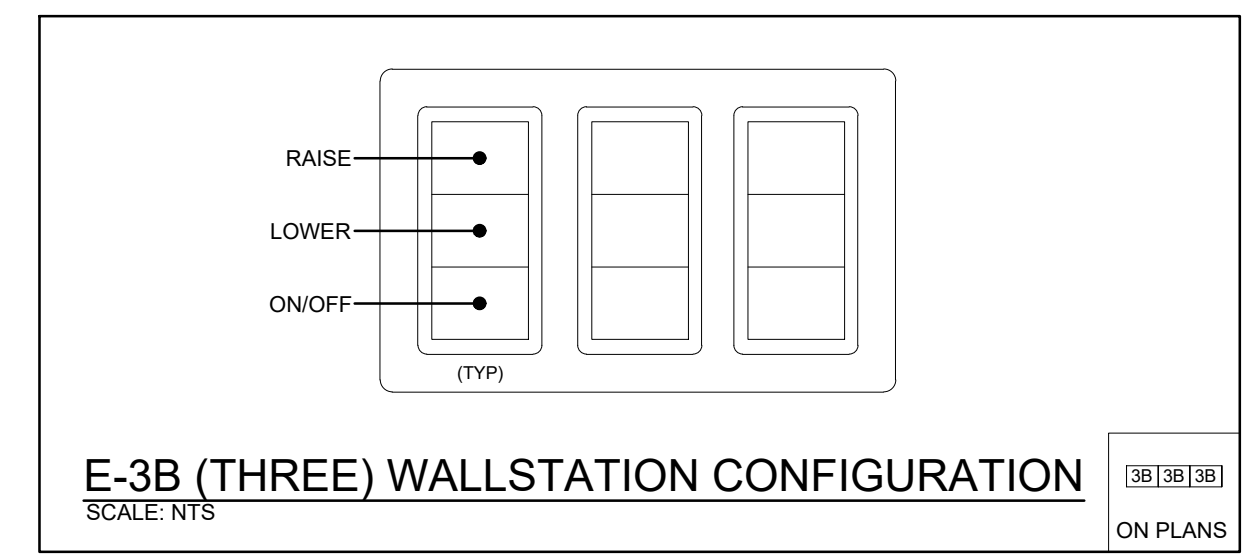
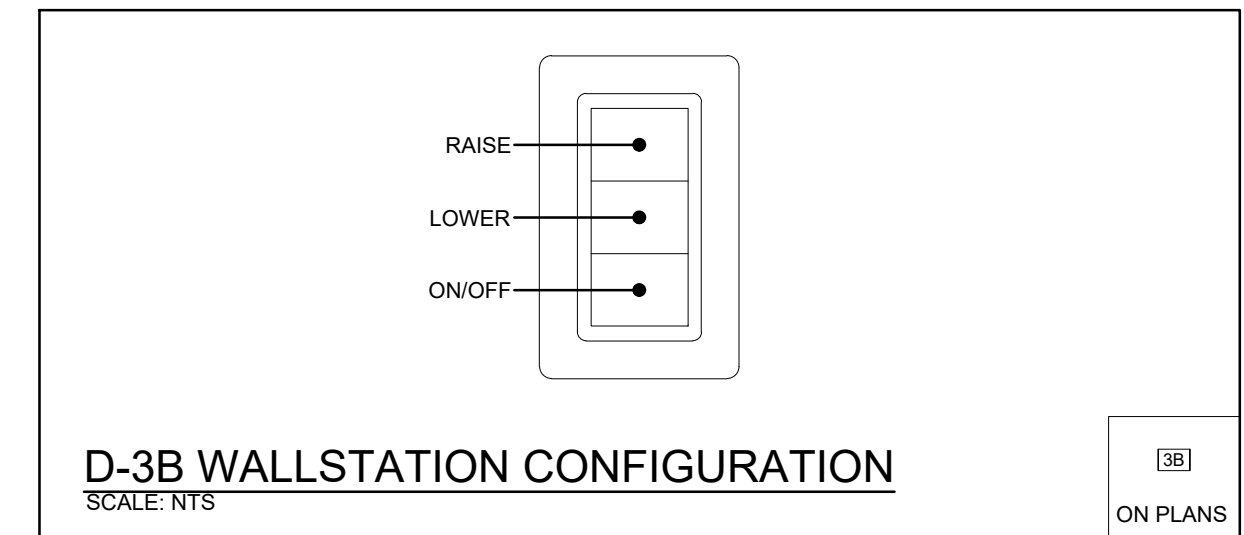
- OPERATION OF ANY SYSTEM OR DEVICE TROUBLE SIGNAL SHALL CAUSE THE FOLLOWING FIRE ALARM SYSTEM TROUBLE ACTIONS:
  - CAUSE AN AUDIBLE AND VISUAL TROUBLE SIGNAL AT THE CONTROL PANEL(S) AND REMOTE TROUBLE INDICATOR(S).
  - ACTIVATE THE COMMON TROUBLE POINT TO SIGNAL THE LOCAL FIRE DEPARTMENT OR APPROVED CENTRAL MONITORING AGENCY OF THE TROUBLE CONDITION.
  - LOG THE ALARM EVENT IN THE HISTORICAL EVENT LOG FILE.
  - DESCRIBE THE NATURE OF THE TROUBLE ON THE CONTROL PANEL(S) LCD DISPLAY AND REMOTE ANNUNCIATOR PANEL(S). THE FOLLOWING SYSTEM AND DEVICE TROUBLE CONDITIONS SHALL BE MONITORED:
    - OPEN CIRCUIT FAULT IN THE FIELD WIRING OF AN ADDRESSABLE LOOP, ADDRESSABLE DETECTION, SIGNAL MODULE, OR A SHORT CIRCUIT ON AN ADDRESSABLE LOOP, CONVENTIONAL DETECTION OR SIGNAL CIRCUIT.
    - DISCONNECTION OR FAILURE OF THE STANDBY BATTERIES.
    - A GROUND FAULT CONDITION ON A LOOP OR SIGNAL CIRCUIT FIELD WIRE.
    - FAILURE OF THE MAIN 120VAC POWER SUPPLIED TO THE PANEL.
    - REMOVAL OR MALFUNCTION OF ANY ADDRESSABLE FIELD DEVICE OR ANY SUPERVISED PANEL MODULE OR COMPONENT.
    - FIRE/SMOKE DAMPER MONITOR MODULE SIGNAL FOR LOSS OF AC POWER TO DAMPER ASSEMBLY.
  - CAUSE AUXILIARY CONTACTS TO ACTIVATE AND SIGNAL FIRE ALARM SYSTEM TROUBLE STATUS TO BAS.

**SYSTEM SILENCE**

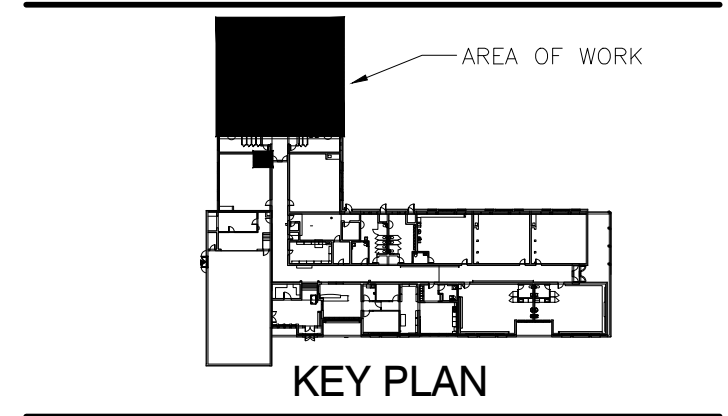
- THE AUDIBLE NOTIFICATION DEVICES SHALL CONTINUE TO SOUND DURING ALARM CONDITIONS UNTIL MANUALLY OR AUTOMATICALLY SILENCED. AUTOMATIC SILENCING SHALL NOT BE POSSIBLE DURING THE FIRST 5 MIN OF ALARM OPERATION.
- THE CONTROL PANELS AND REMOTE BUZZERS SHALL BE SILENCED BY OPERATION OF THE PANELS ACKNOWLEDGE SWITCH.

**SYSTEM RESET**

- THE ALARM, SUPERVISORY AND TROUBLE CONDITIONS SHALL BE CLEARED ONLY UPON ACTIVATION OF THE FIRE ALARM CONTROL PANEL RESET SWITCH, AFTER THE DEVICE THAT INITIATED THE ALARM HAS BEEN CLEARED OR RESTORED.



The contractor shall verify all dimensions and report all errors and discrepancies to the Consultant before commencement of the work. The drawings show general arrangement of services. Follow as closely as actual building construction will permit. Obtain approval for relocation of service from Consultant before commencement of the work. The drawings do not indicate all offsets fitting and accessories which may be required. Provide the same to meet the required conditions. Drawings and specifications, etc., prepared and issued by the Consultant are the property of the Consultant and must be returned at the completion of the project. These documents are not to be duplicated or copied without the consent of the Consultant. Do not scale this drawing. © 2026 DEI Consulting Engineers Inc.

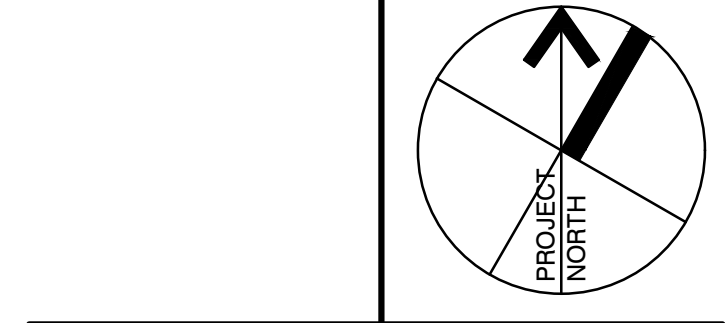


Professional Engineers Ontario  
Name: D.G. MCCONKEY  
Number: 100230476  
Limitations: Detailed design, reporting, and specifications for all building electrical systems, site servicing and review of conformity for these systems in new and renovation construction.  
Association of Professional Engineers of Ontario

Nº	DATE	ISSUE	BY
4	26.02.20	ISSUED FOR TENDER	DM
3	26.02.18	ISSUED FOR COORDINATION	DM
2	26.02.06	ISSUED FOR PERMIT	DM
1	26.01.23	ISSUED FOR COORDINATION	DM

**MARTIN SIMMONS SWEERS**

200 - 113 Breithaupt Street  
Kitchener, ON N3H 5G9  
t 519.745.4754 f 519.745.0061



PROJECT  
**WINSTON CHURCHILL P.S. ROOF REPLACEMENT**

WRDSB  
DRAWING

**DETAILS**

DRAWN BY: CT  
CHECKED BY: DM

DATE: February 20, 2026

SCALE: AS NOTED  
DRAWING Nº: E102

PROJECT Nº: 25054

ALL FIRE ALARM DEVICES BEING DISCONNECTED OR RE-WORKED ARE TO BE RE-VERIFIED AND ARE TO HAVE ALL LIFE SAFETY TESTING DONE AS REQUIRED.

### GENERAL DEMOLITION NOTES

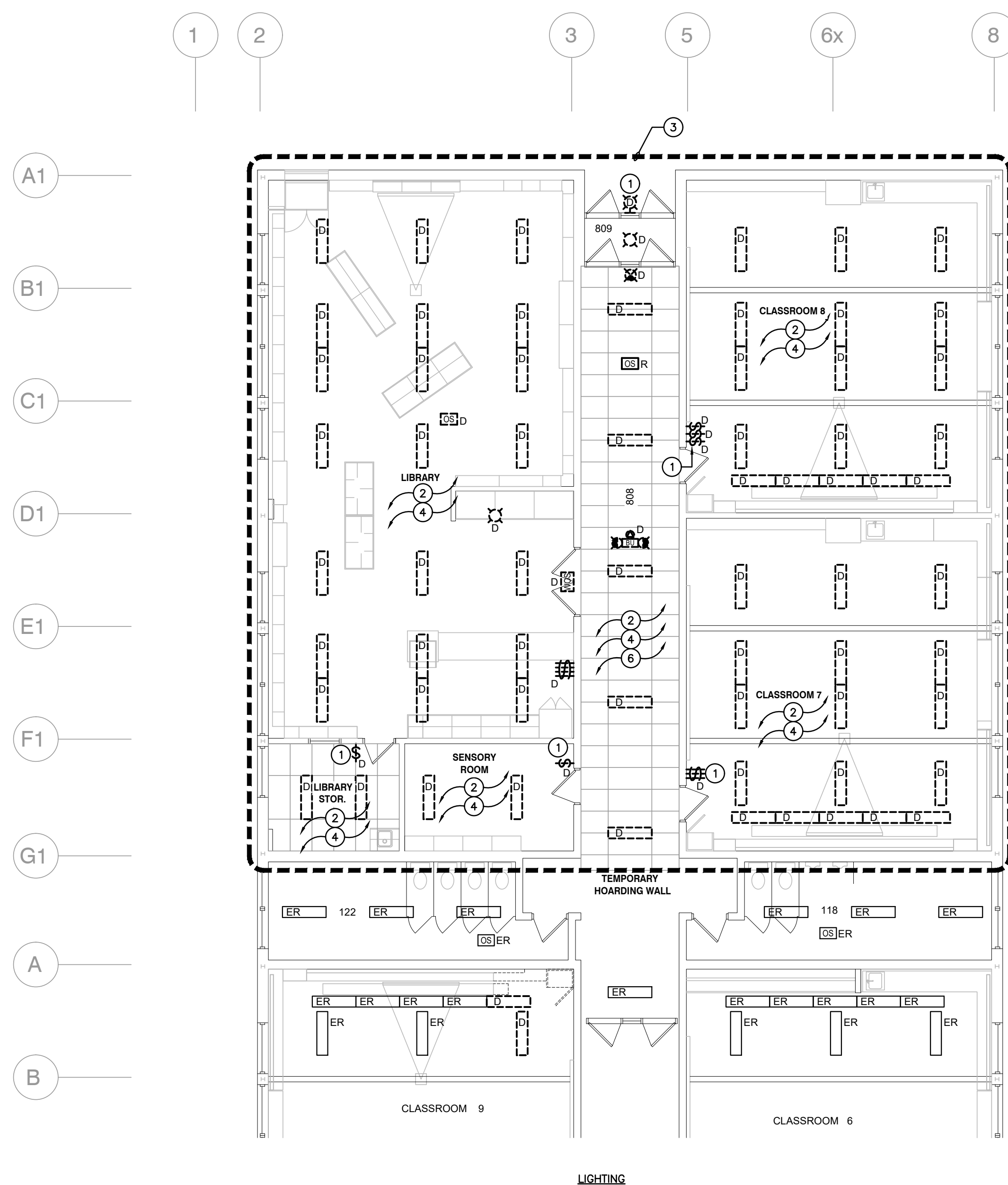
- 'ER' DENOTES EXISTING ITEM TO REMAIN.
- EXISTING ELECTRICAL EQUIPMENT NOT SHOWN SHALL REMAIN UNLESS NOTED OTHERWISE.
- 'R' INDICATES EXISTING ITEM TO BE RELOCATED. REFER TO RENOVATION DRAWINGS AND RELOCATE DEVICE AND WIRING TO SUIT. UNLESS OTHERWISE NOTED.
- 'D' INDICATES EXISTING ITEM TO BE DEMOLISHED. UNLESS OTHERWISE NOTED DISCONNECT AND REMOVE NOTED DEVICE AND WIRING BACK TO SOURCE.
- ALL LIGHTING FIXTURES BEING RELOCATED SHALL BE CLEANED AND CHECKED PRIOR TO BEING REINSTALLED.

### SPECIFIC DEMOLITION NOTES

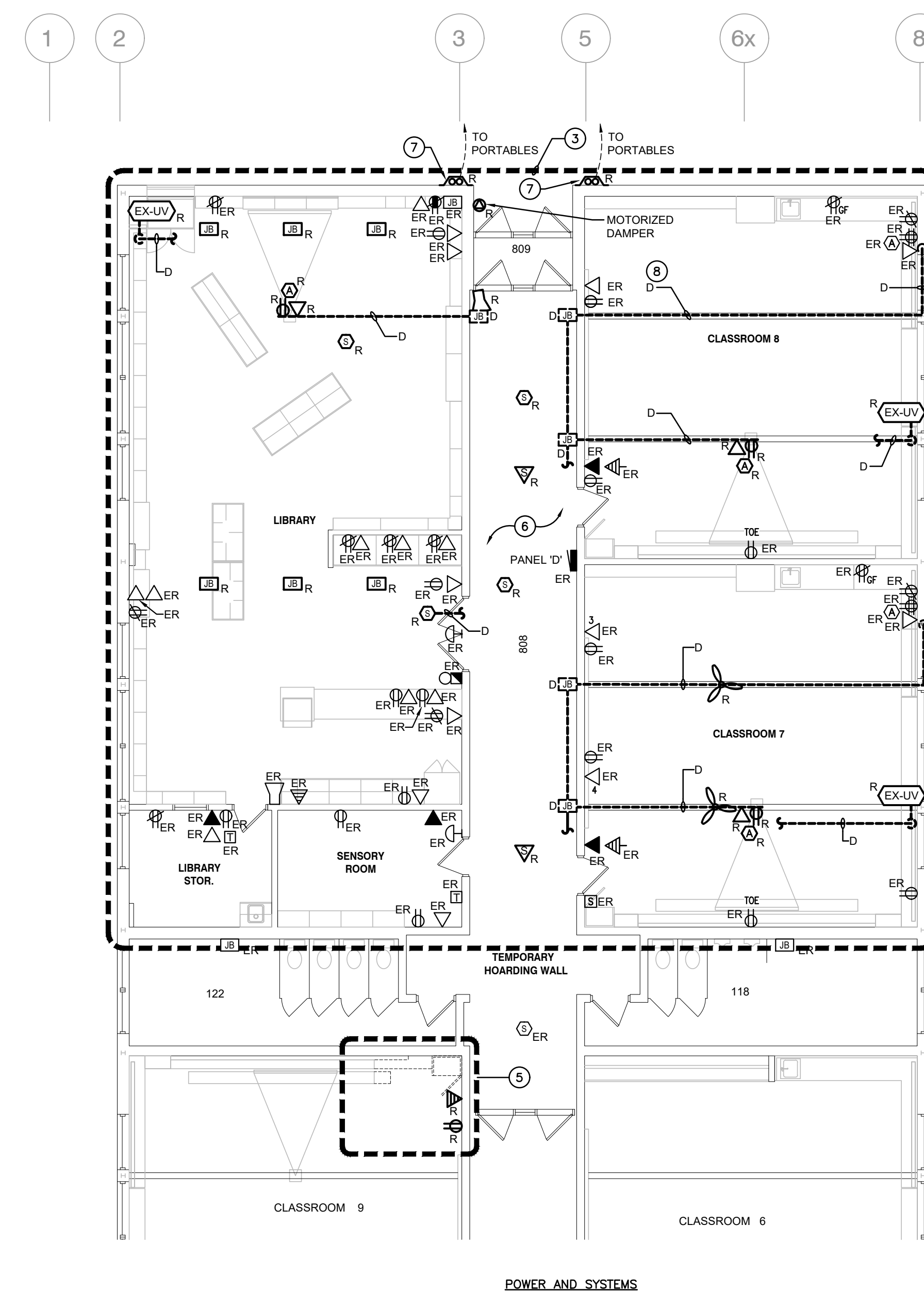
- 1 INDICATED DEVICE IS TO BE DISCONNECTED AND REMOVED COMPLETE. MAINTAIN EXISTING WIRING AND BACKBOX FOR REUSE DURING RENOVATION.
- 2 DISCONNECT AND REMOVE LIGHTING FIXTURES, WIRING, AND CONDUIT WITHIN THIS AREA. REMOVE AND REPLACE ALL EXISTING LOCAL WIRING FOR RECONNECTION TO NEW CONTROLS AS PER RENOVATION PLANS.
- 3 INDICATED AREA WILL HAVE ROOF REMOVED FOR FULL REPLACEMENT. ELECTRICAL CONTRACTOR IS TO REMOVE AND RE-INSTALL ALL CEILING MOUNTED DEVICES TO SUIT. FIRE ALARM VERIFICATION MUST BE INCLUDED FOR ANY FIRE ALARM DEVICES THAT ARE DISCONNECTED. ELECTRICAL CONTRACTOR MUST INCLUDE THE REMOVAL, RE-ROUTING AND EXTENSION OF EXISTING CONDUITS WITHIN AREA TO ALLOW FOR ROOF REPLACEMENT. FEEDS TO EXISTING DEVICES WILL BE ABOVE THE DECK. ELECTRICAL CONTRACTOR IS TO DISCONNECT AND REMOVE EXISTING FEEDS AND PROVIDE NEW BELOW NEW ROOF. ELECTRICAL CONTRACTOR MUST INCLUDE IN TENDER PRICE FOR ADDITIONAL CONDUIT, WIRE, JUNCTION BOXES, ETC. TO ALLOW FOR INSTALLATION. COORDINATE WITH ARCHITECTURAL DRAWINGS FOR FULL SCOPE OF WORK. FOR THE PURPOSE OF BIDDING, INCLUDE THE FOLLOWING ELECTRICAL SCOPE, AS WELL AS ANY REQUIRED SUB-TRADES FOR AUX SYSTEMS. THE FOLLOWING IS AN ESTIMATE TO ASSIST IN BIDDING. ALL DEVICES AND EQUIPMENT SHOWN ON DRAWINGS MUST BE INCLUDED IN TENDER PRICE.
  - RELOCATION AND RECONNECTION OF 5 LIGHTING BRANCH CIRCUITS.
  - RELOCATION AND RECONNECT OF 20 RECEPTACLE AND POWER BRANCH CIRCUITS.
  - REROUTING OF LOCAL ADDRESSABLE FIRE ALARM LOOP.
  - RELOCATION AND RECONNECTION OF 10 FIRE ALARM DETECTION DEVICE CONNECTIONS.
  - RELOCATION AND RECONNECTION OF 5 FIRE ALARM SIGNAL DEVICE CONNECTIONS.
  - DISCONNECTION, PULLING BACK OF HORIZONTAL VOICEDATA CABLING, GUARD CABLING, REROUTING OF SUPPORTING CONDUIT AND CABLE MANAGEMENT, AND RE-TERMINATION TO EXISTING OUTLET JACK.
  - RELOCATION AND RECONNECTION OF LOCAL PA ZONE(S) SIGNAL CIRCUIT(S).
  - RELOCATION AND RECONNECTION OF LOCAL SECURITY ZONE(S).
  - RELOCATION AND RECONNECTION OF FEED TO PANEL D.
  - INCLUDE AN ADDITIONAL ALLOWANCE OF 2,000 JOURNEYMAN HOURS REQUIRED SUPERVISION FOR 8 DAYS CONTINGENCY AND UNFORESEENS.

### SPECIFIC DEMOLITION NOTES CONTINUED

- 4 INDICATED FIXTURES HAVE RECENTLY BEEN UPGRADED TO TYPE B LED BULBS. ELECTRICAL CONTRACTOR TO HAND OVER BULBS TO SCHOOL BOARD FOR FUTURE USE. ELECTRICAL CONTRACTOR IS TO INCLUDE FOR DISPOSAL IN TENDER PRICE IF BOARD DOES NOT REQUIRE THE BULBS.
- 5 INDICATES AREA OF NEW WASHROOM. ALL DEVICES, CONDUIT AND SURFACE WIREWAY ARE TO BE RE-ROUTED TO SUIT CONSTRUCTION OF NEW WASHROOM.
- 6 CEILINGS IN CORRIDORS ARE BEING LOWERED BY 4" TO ALLOW FOR ADDITIONAL SERVICE SPACE. ELECTRICAL CONTRACTOR IS TO INCLUDE FOR RELOCATION/LOWERING OF ALL WALL MOUNT DEVICES AS REQUIRED.
- 7 INDICATES EXISTING PORTABLE OVERHEAD FEEDS TO HAVE ALL FEEDS INCLUDING POWER, DATA, FIRE ALARM, PA, ETC. DISCONNECTED AND RECONNECTED TO ALLOW FOR ROOF REPLACEMENT. ELECTRICAL CONTRACTOR IS TO COORDINATE WITH THE GENERAL CONTRACTOR AND SCHOOL BOARD ON DISCONNECTION SCHEDULES. ELECTRICAL CONTRACTOR TO INCLUDE FOR DISCONNECT AND RECONNECT OF EACH RESPECTIVE PORTABLE SYSTEM AS REQUIRED. FOR THE PURPOSE OF BIDDING INCLUDE FOR RE-VERIFICATION OF FIRE ALARM SIGNAL AND INITIATING DEVICE CONNECTIONS IN TENDER PRICE AS WELL AS DISCONNECTION OF POWER FEEDERS AT SOURCE. COORDINATE EXISTING POWER FEEDER SOURCE ON SITE. SUPPLY AND INSTALL NEW CONDUIT SO ALL FEEDS ARE WITHIN CONDUIT. NO SURFACE CABLES ARE TO BE RE-INSTALLED.
- 8 INDICATES EXISTING SURFACE MOUNT CONDUITS ARE TO BE REMOVED AND REPLACED AS PART OF CONSTRUCTION. NEW FEEDS ARE TO BE INSTALLED ABOVE NEW T-BAR CEILING. REPLACE AND EXTEND EXISTING FEEDS ACCORDINGLY.



PARTIAL GROUND FLOOR DEMOLITION  
SCALE: 1:100



**DEI**  
Consulting Engineers  
MECHANICAL | ELECTRICAL | AQUATIC

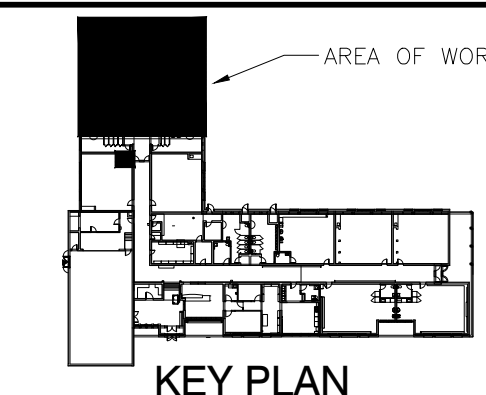
55 Northland Road, Waterloo, ON N2V 1Y8  
Phone: 519-725-3555  
Website: deiassociates.ca  
Project Number: 25400

The contractor shall verify all dimensions and report all errors and discrepancies to the Consultant before commencement of the work. The drawings show general arrangement of services. Follow as closely as actual building construction will permit. Obtain approval for relocation of service from Consultant before commencement of the work.

The drawings do not indicate all offsets fitting and accessories which may be required. Provide the same to meet the required conditions.

Drawings and specifications, etc., prepared and issued by the Consultant are the property of the Consultant and must be returned at the completion of the project. These documents are not to be duplicated or copied without the consent of the Consultant.

Do not scale this drawing.  
© 2026 DEI Consulting Engineers Inc.

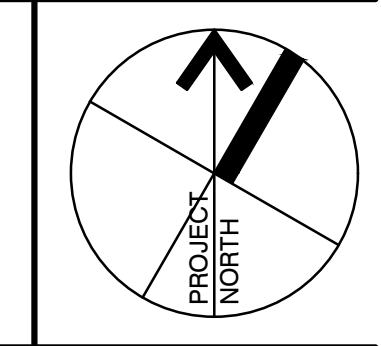


Professional Engineers Ontario  
Name: D.G. MCCONKEY  
Number: 100230476  
Limitations: Detailed design, reporting, and specifications for all building electrical systems, site servicing and review of conformity for these systems in new and renovation construction.  
Association of Professional Engineers of Ontario

Nº	DATE	ISSUE	BY
4	26.02.20	ISSUED FOR TENDER	DM
3	26.02.18	ISSUED FOR COORDINATION	DM
2	26.02.06	ISSUED FOR PERMIT	DM
1	26.01.23	ISSUED FOR COORDINATION	DM

MARTIN SIMMONS SWEERS

200 - 113 Breithaupt Street  
Kitchener, ON N2H 5G9  
t 519.745.4754 f 519.745.0061



PROJECT  
WINSTON CHURCHILL P.S  
ROOF REPLACMENT

WRDSB  
DRAWING

## FIRST FLOOR DEMOLITION PLANS

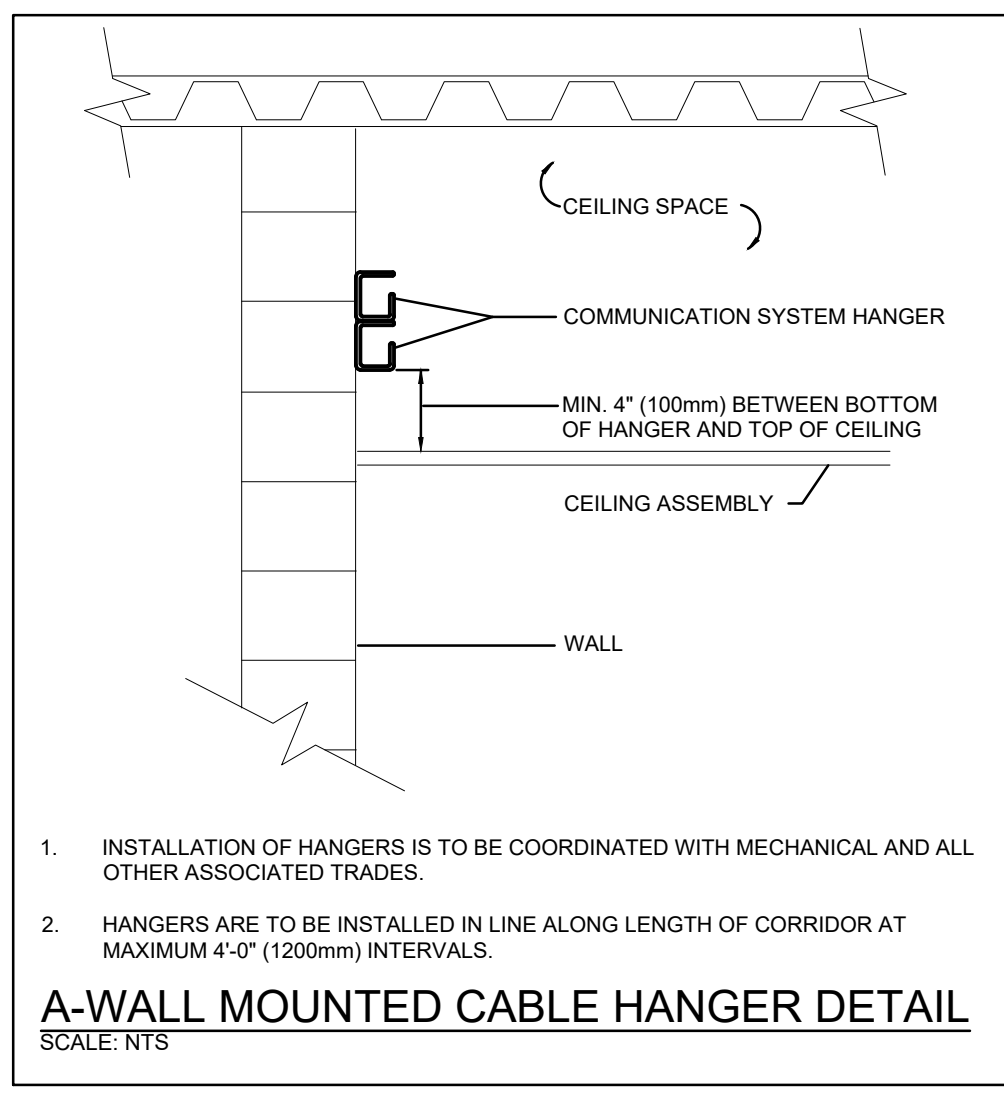
DRAWN BY: CT  
CHECKED BY: DM

DATE: February 20, 2026

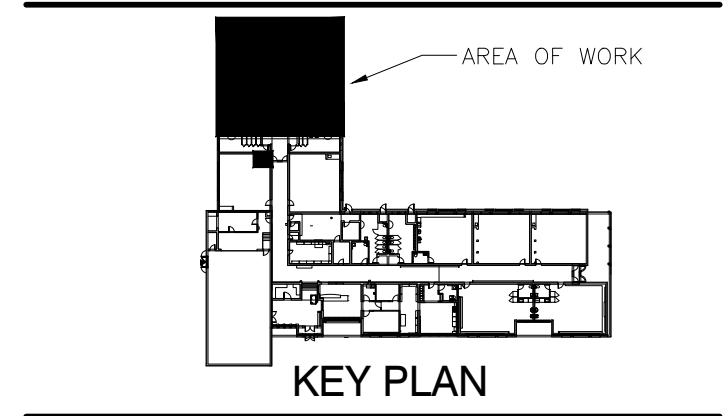
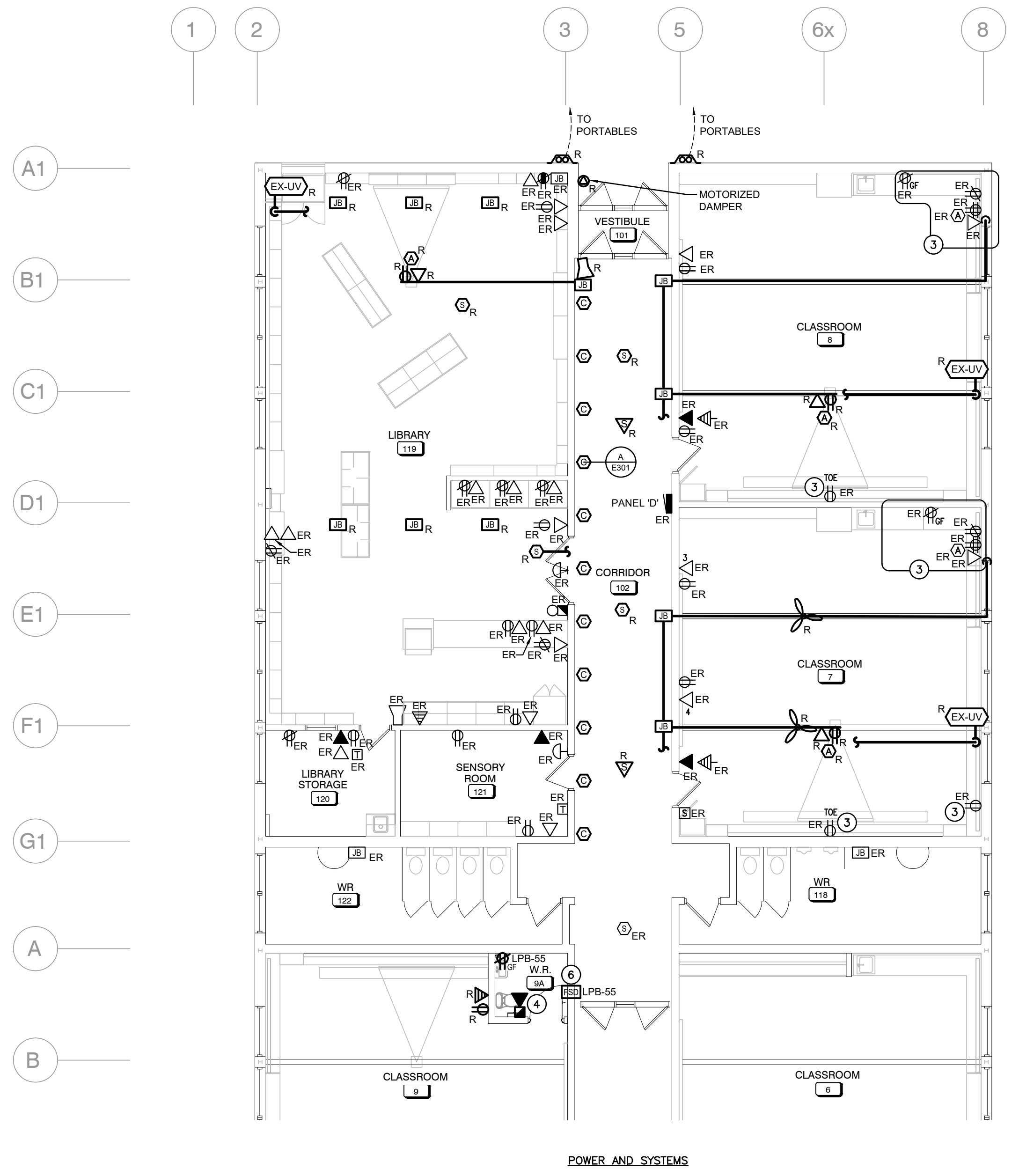
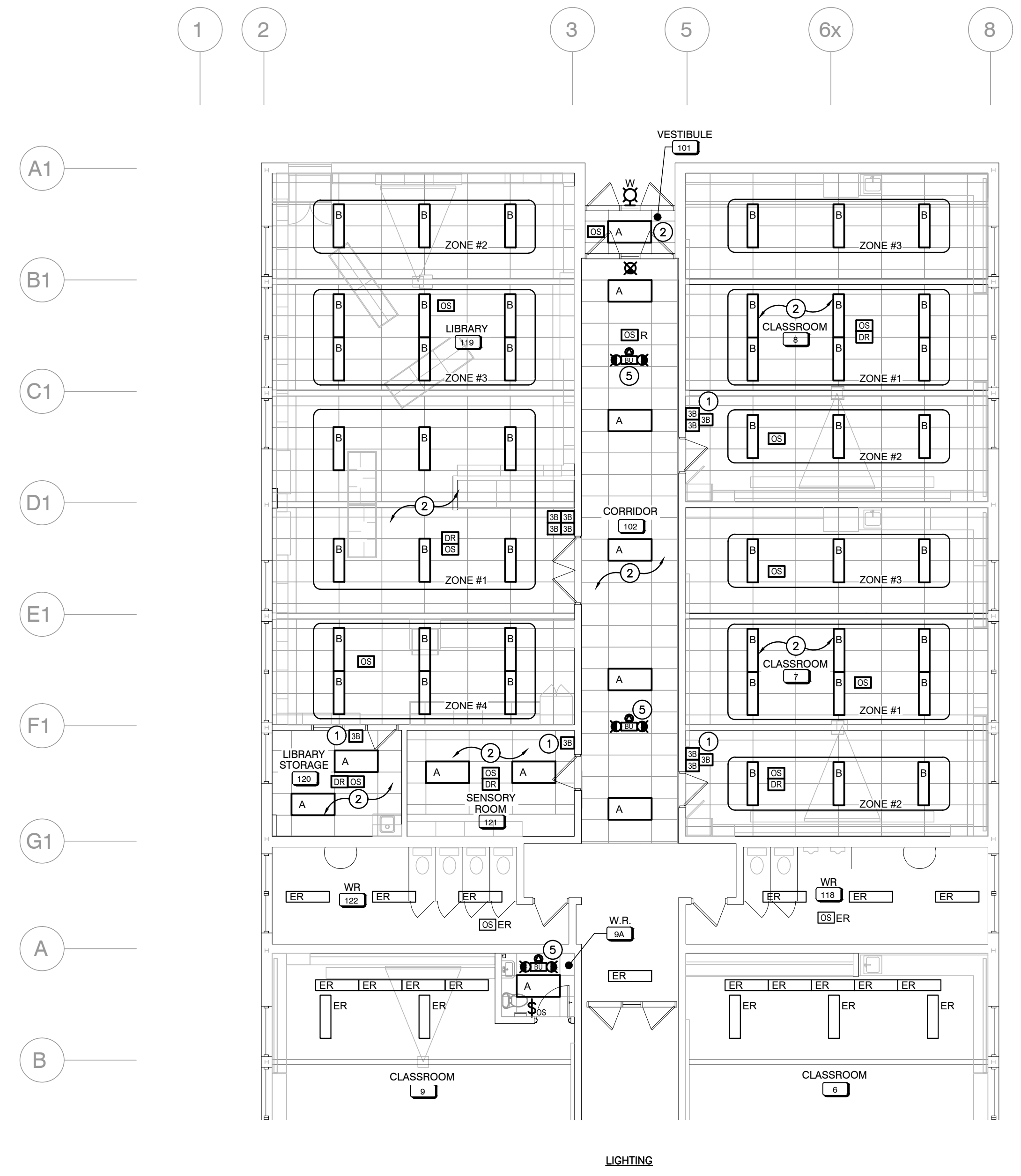
SCALE: AS NOTED  
DRAWING Nº: E201

PROJECT Nº: 25054

The contractor shall verify all dimensions and report all errors and discrepancies to the Consultant before commencement of the work.  
 The drawings show general arrangement of services. Follow as closely as actual building construction will permit. Obtain approval for relocation of service from Consultant before commencement of the work.  
 The drawings do not indicate all offsets fitting and accessories which may be required. Provide the same to meet the required conditions.  
 Drawings and specifications, etc., prepared and issued by the Consultant are the property of the Consultant and must be returned at the completion of the project. These documents are not to be duplicated or copied without the consent of the Consultant.  
 Do not scale this drawing.  
 © 2026 DEI Consulting Engineers Inc.



- GENERAL RENOVATION NOTES**
- 'ER' INDICATES EXISTING ITEM TO REMAIN.
  - 'R' INDICATES EXISTING ITEM IN RELOCATED POSITION.
  - ALL DEVICES SHOWN ARE NEW UNLESS OTHERWISE NOTED.
  - EXISTING ELECTRICAL EQUIPMENT NOT SHOWN SHALL REMAIN UNLESS OTHERWISE NOTED.
  - MAINTAIN SERVICE TO ALL EXISTING DEVICES TO REMAIN.
  - REVISE PANEL DIRECTORIES TO SUIT CHANGES (TYPED).
  - PROVIDE ADEQUATE SUPPORT FOR ALL CEILING MOUNTED DEVICES.
- SPECIFIC RENOVATION NOTES**
1. INDICATED DEVICE IS TO RE-USE EXISTING BACKBOX. CONNECT TO NEW CONTROLS AS NOTED ON RENOVATION PLANS.
  2. LIGHT FIXTURE(S) WITHIN INDICATED AREA(S) ARE TO BE RE-FED FROM SOURCE PANEL USING NEW CONDUIT, WIRE AND CONTROLLED AS SHOWN. ALL FEEDS ARE TO BE INSTALLED AS PER SPECIFICATIONS.
  3. PROVIDE ALTERNATE PRICE TO REMOVE AND RE-INSTALL ALL MILLWORK DEVICES AS REQUIRED FOR MILLWORK REPLACEMENT. ALL DEVICES ARE TO BE REPLACED WITH NEW.
  4. INDICATES NEW FIRE ALARM SIGNAL DEVICE TO BE CONNECTED TO EXISTING SIGNAL CCT. PROVIDE BOOSTER MODULE AS REQUIRED.
  5. CONNECT TO UNSWITCHED SIDE OF LOCAL LIGHTING CIRCUIT.
  6. INDICATES 120V POWER AND FIRE ALARM CONNECTIONS TO SMOKE/FIRE DAMPER WITH INTEGRAL SMOKE DETECTOR. REFER TO FIRE ALARM RISER DIAGRAM.



Professional Engineers Ontario  
 Limited Engineering Licensee  
 Name: D.G. MCCONKEY  
 Number: 100230476  
 Limitations: Detailed design, reporting, and specifications for all building electrical systems, site servicing and review of conformity for these systems in new and renovation construction.  
 Association of Professional Engineers of Ontario

NO	DATE	ISSUE	BY
4	26.02.20	ISSUED FOR TENDER	DM
3	26.02.18	ISSUED FOR COORDINATION	DM
2	26.02.06	ISSUED FOR PERMIT	DM
1	26.01.23	ISSUED FOR COORDINATION	DM

**MARTIN SIMMONS SWEERS**  
 200 - 113 Breithaupt Street  
 Kitchener, ON N2H 5G9  
 t 519.745.4754 f 519.745.0061

PROJECT  
**WINSTON CHURCHILL P.S  
 ROOF REPLACMENT**

WRDSB  
 DRAWING

**FIRST FLOOR  
 RENOVATION PLANS**

DRAWN BY	CHECKED BY
CT	DM
DATE	February 20, 2026
SCALE	DRAWING NO.
AS NOTED	<b>E301</b>
PROJECT NO.	25054

**PARTIAL GROUND FLOOR RENOVATION**  
 SCALE: 1:100