

The contractor shall verify all dimensions and report all errors and discrepancies to the Consultant before commencement of the work.
The drawings show general arrangement of services. Follow as closely as actual building construction will permit. Obtain approval for relocation of service from Consultant before commencement of the work.
The drawings do not indicate all offsets fitting and accessories which may be required. Provide the same to meet the required conditions.
Drawings and specifications, etc., prepared and issued by the Consultant are the property of the Consultant and must be returned at the completion of the project. These documents are not to be duplicated or copied without the consent of the Consultant.
Do not scale this drawing.
© 2026 DEI Consulting Engineers Inc.

Item	Type	Connection Sizes					Acceptable Manufacturer	Fixture Description	Acceptable Manufacturer	Trim Description	Acceptable Manufacturer	Accessory Description
		HW	CW	TW	Drain	Vent						
L-1	WALL HUNG LAV SINGLE HANDLE	1/2	1/2		1 1/4	1 1/4	AMERICAN STANDARD LUCERNE 355.012 KOHLER BRENHAM K-1997 ZURN Z5344	WALL-HUNG SINK, VITREOUS CHINA, WITH SPLASH LIP, SUPPLY OPENINGS ON 100 MM (4") CENTRES, OVERFLOW, SIZE: 557 MM X 502 MM (21 15/16" X 19 3/4")	DELTA 87T105 MOEN COMMERCIAL 8884 ZURN Z86100-XL-RKR	HEAVY DUTY CAST BRASS CHROME PLATED SINGLE HOLE MOUNT FAUCET, SLOW CLOSING METERING INTEGRAL BRASS CENTERLINE SPOUT VANDAL RESISTANT HANDLE, ADJUSTABLE CYCLE TIME (PRESET TO 10 SECONDS @ 80 PSI) VANDAL RESISTANT AERATOR, MAXIMUM FLOW RATE NOT TO EXCEED 0.5 GPM (0.25 GALLONS PER CYCLE) C/W HEAVY DUTY CAST BRASS CHROME PLATED COVER PLATE.		WASTE FITTING: OPEN GRID STRAINER PROVIDE FLOOR MOUNTED WALL CARRIER THERMOSTATIC MIXING VALVE UNDER LAV, DELTA R3070-MIXLF, POWERS LM490 OR EQUAL.
WC-1	WATER CLOSET FLUSH TANK ROUND FRONT FOR KINDERGARTENS		1/2		3	1.5	AMERICAN STANDARD CADET 3 2384.012 KOHLER WELLWORTH K-3977 ZURN Z5540	VITREOUS CHINA, TANK WITH LINER & FLAPPER TYPE VALVE ASSY, SIPHON JET, ROUND RIM, TWO PIECE (TANK & BOWL) CLOSE COUPLED, BOLT CAP, BOTTOM OUTLET, FLOOR-MOUNTED, 12" ROUGH-IN, MIN 2" TRAP WAY, MAXIMUM 6 litres (1.6 gal) PER FLUSH.			SEAT: BEMIS 7750TDG CENTOCCO 460TM	SEAT: WHITE, ROUND, CLOSED FRONT WITH COVER, MOLDED SOLID ANTIMICROBIAL PLASTIC, STAINLESS STEEL CHECK HINGES, STAINLESS STEEL OR SOLID BRASS INSERT POST.
S-1	STAINLESS STEEL SINGLE SINK (KINDERGARTEN SINK)		1/2		1.5	1.25	FRANKE LBS6408P-1 ELKAY NOVANNI WESSAN	SINK: SINGLE COMPARTMENT, LEDGE-BACK, FROM 1.0 MM (20 GAUGE) THICK TYPE 302 POLISHED STAINLESS STEEL, SELF-RIMMING, UNDERCOATED, CLAMPS, OVERALL SIZES: 500 MM x 500 MM (20" x 20" x 8")	DELTA 100LF-HDF MOEN COMMERCIAL SLOAN CHICAGO	FAUCET: CHROME PLATED BRASS, WITH GOOSENECK SPOUT, AERATOR, SINGLE LEVER HANDLE, WASHERLESS CONTROLS, ACCESSORIES TO LIMIT MAXIMUM FLOW RATE TO 5.7 l/min (1.5 gpm) AT 413 kPa (60 psi), 120" MAXIMUM SPOUT SWIVEL.		WASTE FITTING: INTEGRAL STAINLESS STEEL BASKET STRAINER/STOPPER, TAILPIECE, CAST BRASS P-TRAP WITH CLEANOUT, THERMOSTATIC MIXING VALVE MOUNTED UNDER SINK IN STAINLESS STEEL RECESSED HOUSING, DELTA R3070-MIXLF, POWERS LM490 OR EQUAL.
FD-1	FLOOR DRAIN				NOTED	1.5	ZURN ZN415B MFAB F1100-C CONTOUR C2000-R6 WATTS FD-100-C-A	GENERAL DUTY CAST IRON BODY, ADJUSTABLE HEAD, NICKEL BRONZE STRAINER, INTEGRAL SEEPAGE PAN, AND CLAMPING COLLAR, USE SQUARE STRAINER IN TILED AREAS AND ROUND STRAINER ELSEWHERE, C/W TRAP PRIMER				

MECHANICAL LEGEND

Item	Description
----	ITEM TO BE REMOVED
→	CUT EXISTING & CONNECT NEW PIPING
→	FLOW DIRECTION
— — — — —	POTABLE COLD WATER
— · — · —	POTABLE HOT WATER
— · · · —	POTABLE HOT WATER RECIRC.
— — SAN-EX — —	EXISTING SAN ABOVE FLOOR
— — SAN-EX — —	EXISTING SAN BELOW FLOOR
— — SAN — —	SANITARY ABOVE FLOOR
— — SAN — —	SANITARY BELOW FLOOR
— — V — —	VENT
— HWS —	HEATING WATER SUPPLY
— HWR —	HEATING WATER RETURN
FD	FLOOR DRAIN
— — — — —	TRAP PRIMER
⊥	TEE CONNECTION
—	PIPE DOWN
—	PIPE UP
— — — — —	FLEXIBLE CONNECTION
— — — — —	REDUCER/INCREASER
— — — — —	BALL VALVE
— — — — —	BUTTERFLY VALVE
— — — — —	GATE VALVE
— — — — —	2-WAY TEMPERATURE CONTROL VALVE
— — — — —	3-WAY TEMPERATURE CONTROL VALVE
— — — — —	FLOOR CLEANOUT
— — — — —	THERMOSTAT (WITH GUARD WHERE INDICATED)
— — — — —	SUPPLY AIR DUCT
— — — — —	RETURN/EXHAUST AIR DUCT
— — — — —	ACOUSTIC DUCT LINING
— — — — —	THERMAL INSULATION
— — — — —	BALANCING DAMPER
— — — — —	MOTORIZED DAMPER
— — — — —	FIRE DAMPER
— — — — —	RECTANGULAR DUCTWORK
— — — — —	RIGID ROUND DUCT
— — — — —	DIFFUSER/GRILLE SIZE (mm), TYPE & CAPACITY (cfm)
— — — — —	HYDRONIC HEATING SIZE, TYPE & CAPACITY
— — — — —	EXISTING DUCT (SIZE AS INDICATED)
— — — — —	TRANSFER DUCT (SIZE AS INDICATED)

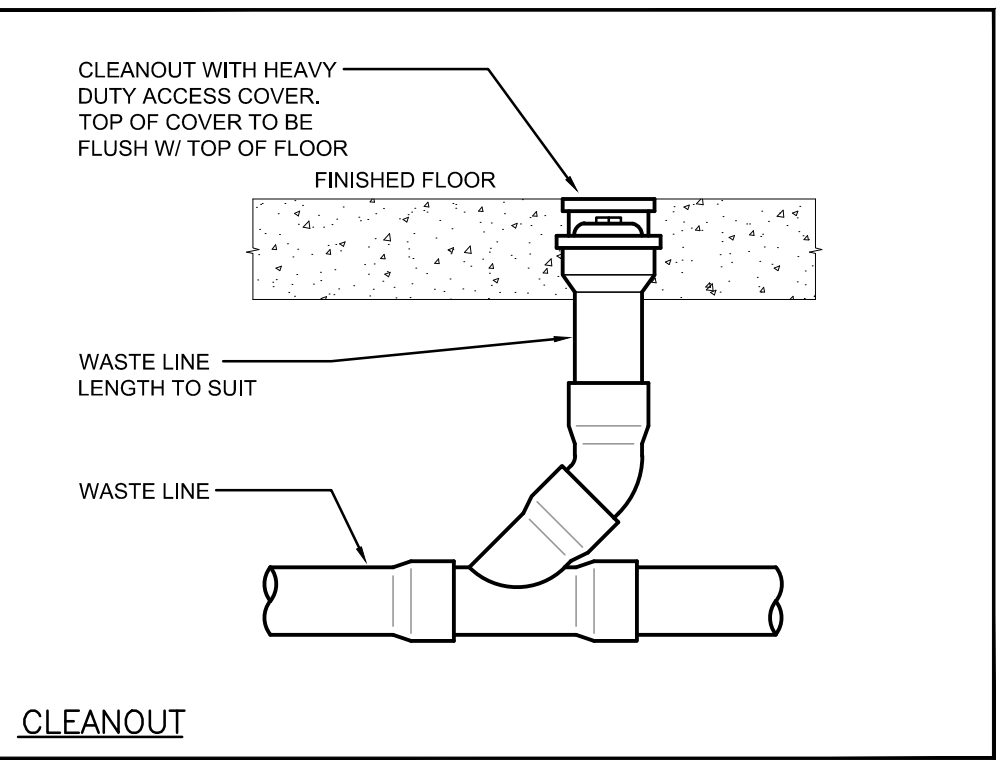
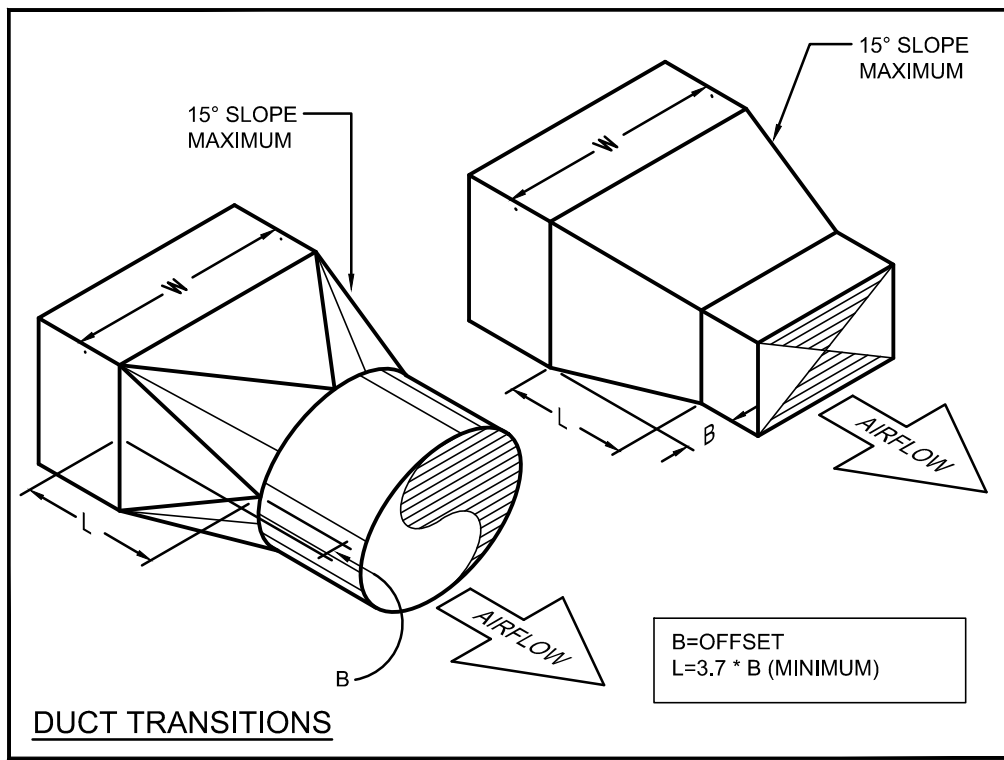
GRILLE SCHEDULE

Item	Type	Equalizing Grid	Volume Damper	Acceptable Manufacturer	Description
E1	EXHAUST GRILLE (DUCTED)	NO	NONE	EH PRICE 80-FA	1/2x12x1/2 ALUMINUM EGGRATE CORE, C/W 1 1/4" FLAT BORDER & SCREWED FASTENING FOR SURFACE MOUNTING.

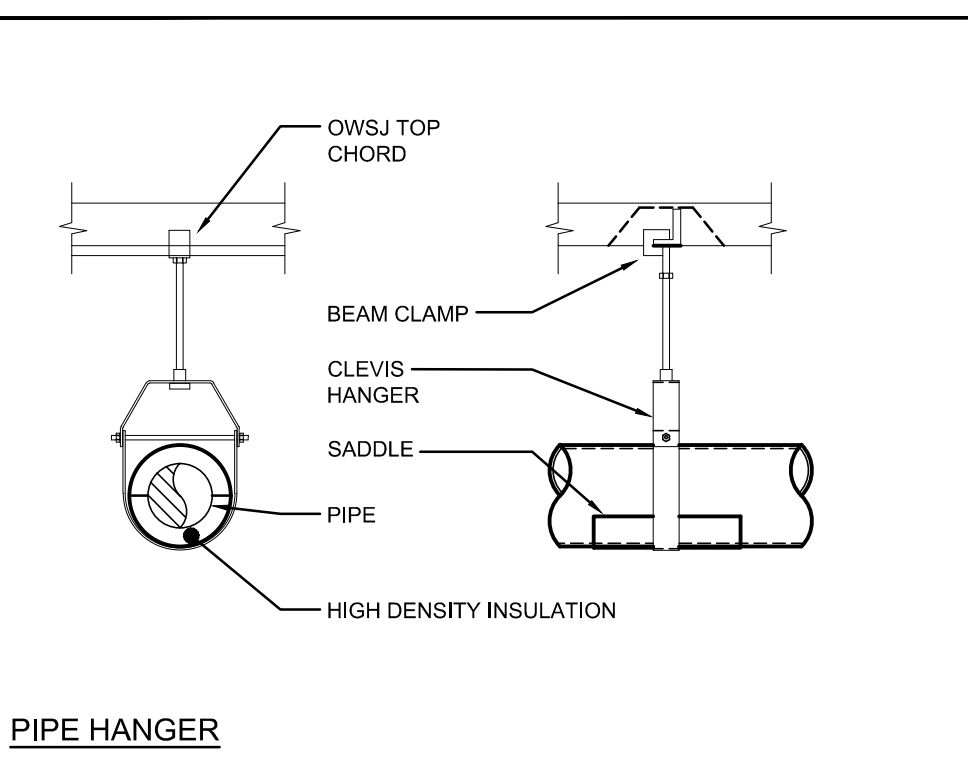
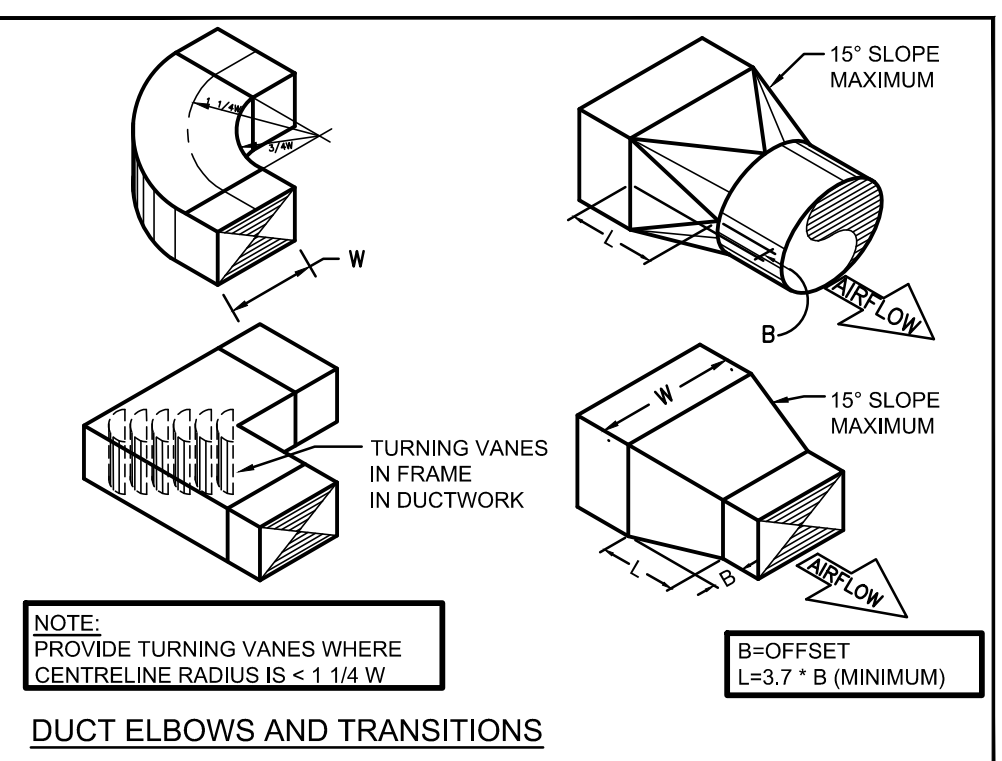
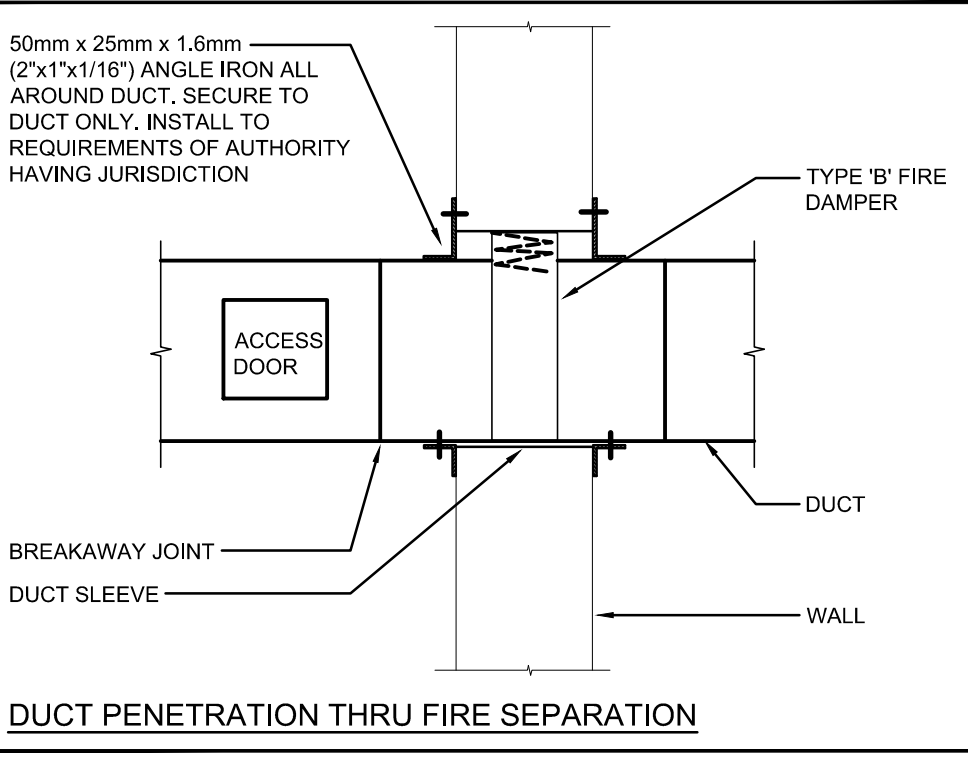
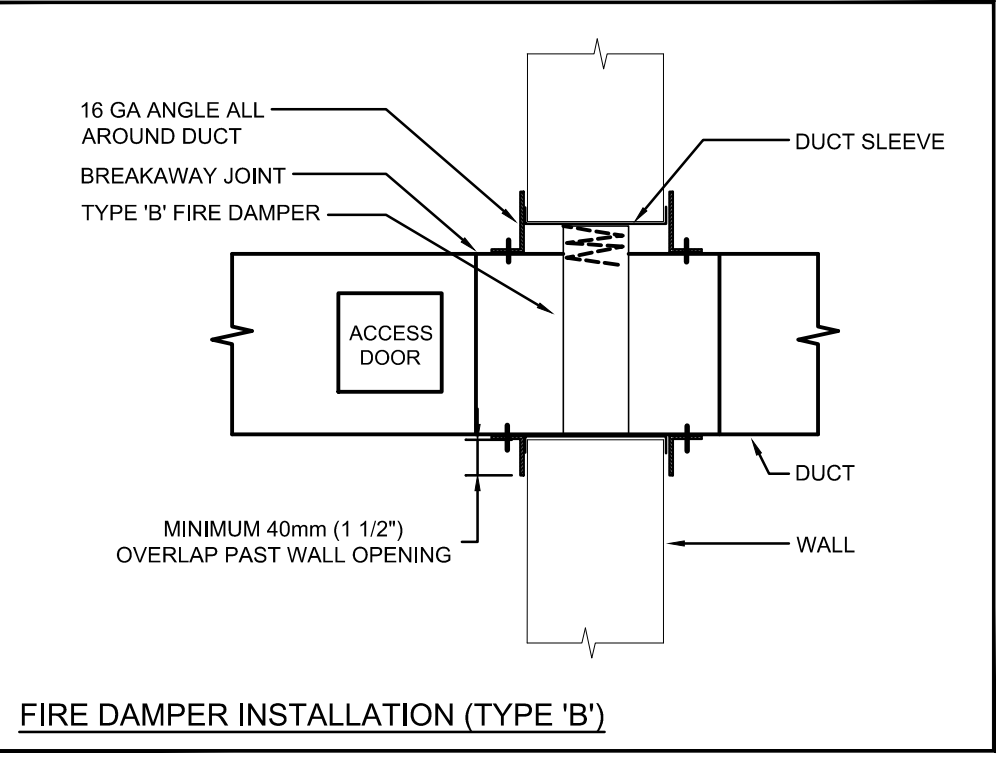
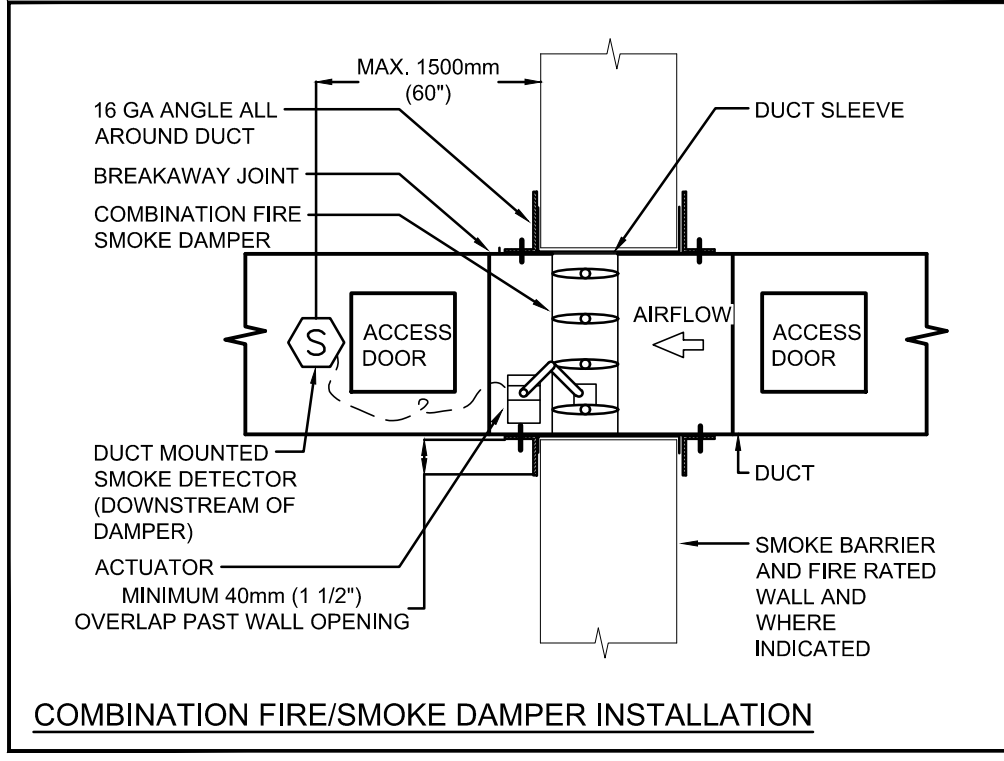
GENERAL GRILLE SCHEDULE NOTES: Xref xx25400 Floor Plan.dwg

- ACCEPTABLE MANUFACTURERS: EH PRICE, NAILOR, TITUS, KRUEGER, CARNES, METALAIRE, TUTTLE & BAILEY.
- GRILLE COLOURS ARE SELECTED BY ARCHITECT FROM STANDARD COLOUR CHART, UNLESS OTHERWISE NOTED.
- PAINT INTERIOR OF DUCTWORK BEHIND GRILLE MATTE BLACK (WHERE VISIBLE THRU GRILLE).

CAPACITY INDICATED ON SCHEDULE REFER TO SPECIFICATION FOR CONSTRUCTION STANDARDS, ACCESSORIES AND ADDITIONAL INFORMATION.



- GENERAL NOTES**
- ALL DRAWINGS ARE TO BE READ IN CONJUNCTION WITH THE PREPARED SPECIFICATION.
 - THIS CONTRACTOR SHALL TRACK REVISIONS ON SITE AND SUBMIT AS-BUILTS TO CONSULTANT TO DIGITIZE, REFER TO SPECIFICATIONS 22 02 51 & 23 02 51.
 - ALL PIPING, DUCTWORK, AND EQUIPMENT IS TO BE RESTRAINED TO MEET SEISMIC CODE REQUIREMENTS. SUPPLY AND INSTALL ALL SEISMIC RESTRAINT MATERIALS TO MANUFACTURER'S WRITTEN INSTRUCTIONS. REFER TO SPECIFICATION.
 - SANITARY VENT PIPING IS NOT SHOWN, PROVIDE ALL NECESSARY VENT PIPING FROM ALL FIXTURES FOR A COMPLETE SYSTEM TO ALL LOCAL PLUMBING CODE & LOCAL AUTHORITY REQUIREMENTS. CONNECTED TO EXISTING VENTS OR NEW VENTS AS REQUIRED, CO-ORDINATE VENT LOCATION(S) WITH GENERAL CONTRACTOR. MAINTAIN MIN 14'-0" FROM ANY AIR INLET. INSTALL VENT PIPING HIGH IN JOIST SPACE.
 - CONTRACTOR TO LOCATE ISOLATION VALVES / FREEZE PIPING / OR OTHERWISE DRAIN SYSTEMS TO ALLOW PROPOSED WORK TO PROCEED. REFILL SYSTEMS AS INDICATED.
 - REFER TO SPECIFICATIONS FOR CONFORMANCE REQUIREMENTS.



№	DATE	ISSUE	BY
4	26.02.20	ISSUED FOR TENDER	MP
3	26.02.06	ISSUED FOR PERMIT	MP
2	26.01.23	ISSUED FOR COORDINATION	MP
1	25.12.01	ISSUED FOR SCHEMATIC DESIGN	MP

MARTIN SIMMONS SWEERS

200 - 113 Breithaupt Street
Kitchener, ON N3H 5G9
t 519.745.4754 f 519.745.0061

LICENSED PROFESSIONAL ENGINEER
20 Feb 26
M.S. PACE
10271722
PROVINCE OF ONTARIO

PROJECT
WINSTON CHURCHILL P.S ROOF REPLACMENT

WRDSB
DRAWING

LEGENDS, SCHEDULES & DETAILS

DRAWN BY: **STV** CHECKED BY: **MP**

DATE: **February 20, 2026**

SCALE: **AS NOTED** DRAWING NO: **M101**

PROJECT NO: **25054**

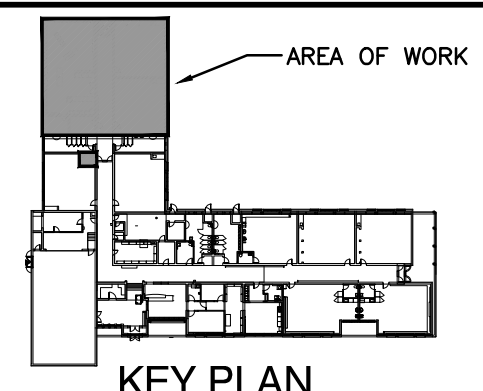
The contractor shall verify all dimensions and report all errors and discrepancies to the Consultant before commencement of the work.

The drawings show general arrangement of services. Follow as closely as actual building construction will permit. Obtain approval for relocation of service from Consultant before commencement of the work.

The drawings do not indicate all offsets fitting and accessories which may be required. Provide the same to meet the required conditions.

Drawings and specifications, etc., prepared and issued by the Consultant are the property of the Consultant and must be returned at the completion of the project. These documents are not to be duplicated or copied without the consent of the Consultant.

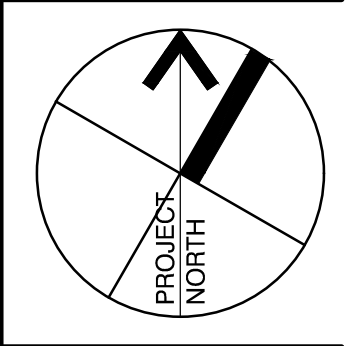
Do not scale this drawing.
© 2026 DEI Consulting Engineers Inc.



NO	DATE	ISSUE	BY
4	26.02.20	ISSUED FOR TENDER	MP
3	26.02.06	ISSUED FOR PERMIT	MP
2	26.01.23	ISSUED FOR COORDINATION	MP
1	25.12.01	ISSUED FOR SCHEMATIC DESIGN	MP

**MARTIN
SIMMONS
SWEERS**

200 - 113 Breithaupt Street
Kitchener, ON N3H 5G9
t 519.745.4754 f 519.745.0061



PROJECT
**WINSTON CHURCHILL P.S
ROOF REPLACEMENT**

WRDSB
DRAWING

**GROUND FLOOR
DEMOLITION PLAN**

DRAWN BY: **STV** CHECKED BY: **MP**

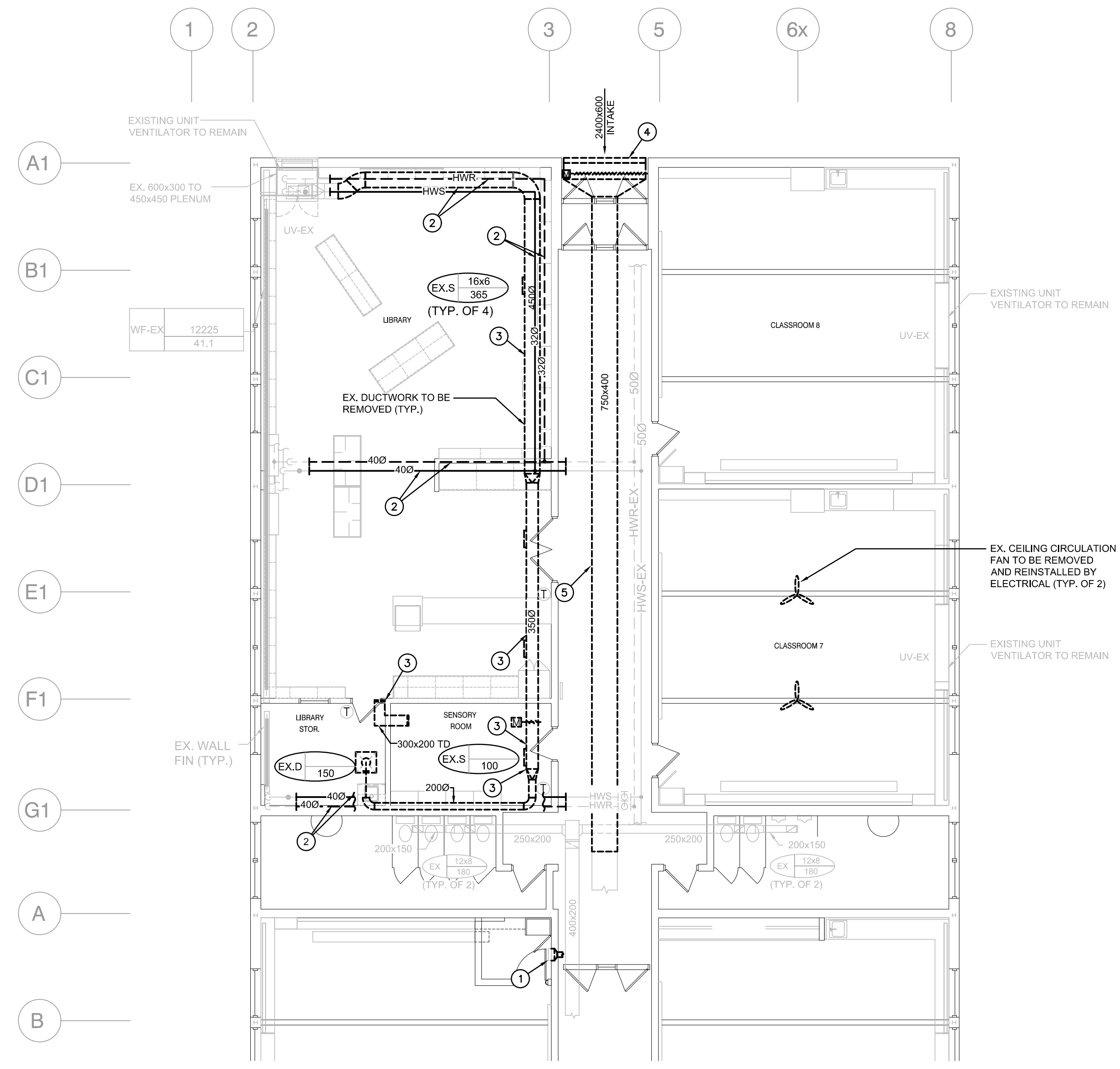
DATE: **February 20, 2026**

SCALE: **AS NOTED** DRAWING NO: **M201**

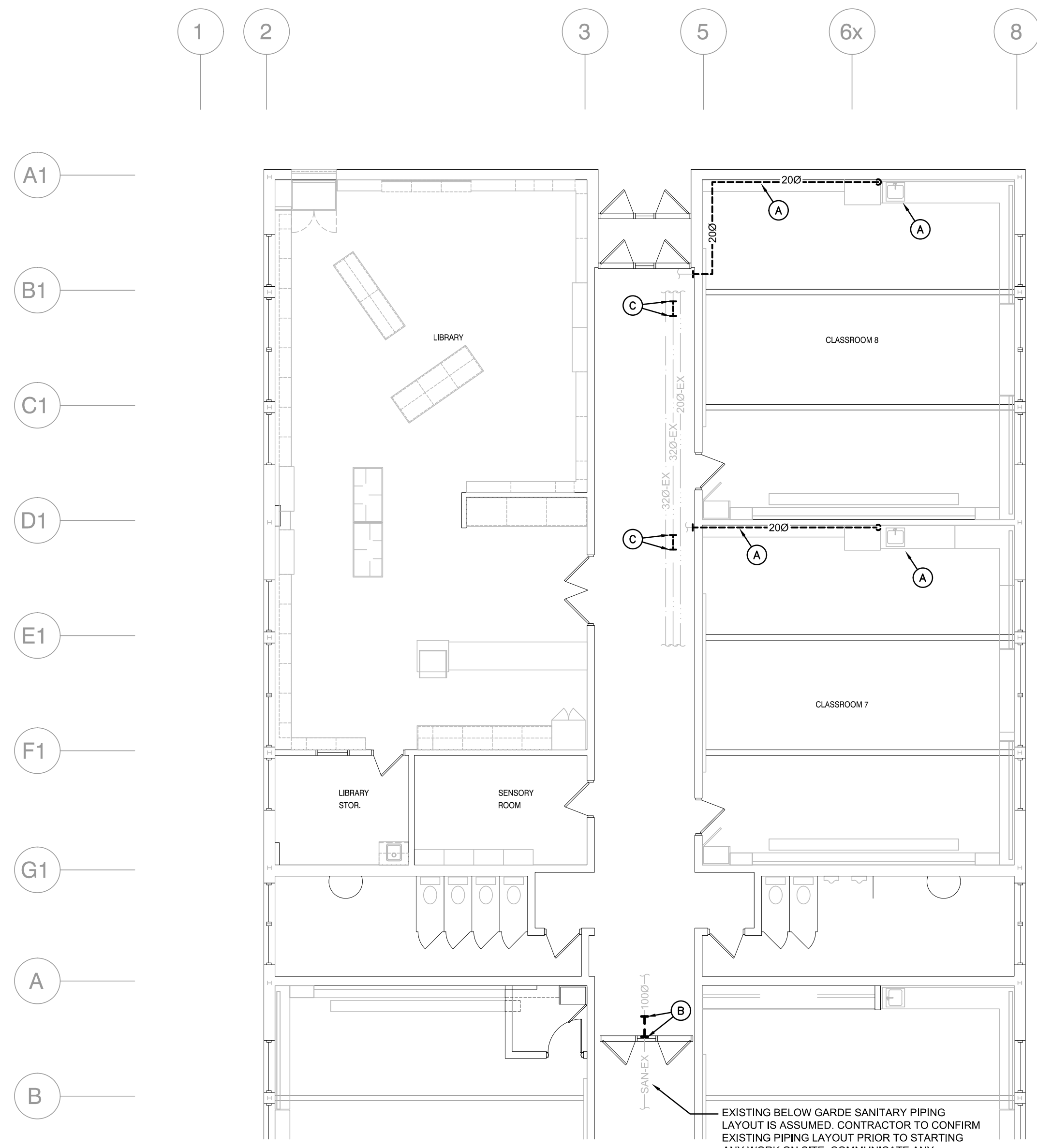
PROJECT NO: **25054**

- ### GENERAL DEMOLITION NOTES
- EXISTING MECHANICAL ITEMS NOT SHOWN SHALL REMAIN UNLESS NOTED OTHERWISE.
 - EXISTING MECHANICAL ITEMS SHOWN BUT NOT NOTED AS BEING REMOVED OR RENOVATED SHALL REMAIN AS PRESENTLY INSTALLED AND OPERATING.
 - THIS CONTRACTOR SHALL BE RESPONSIBLE FOR VERIFYING ON SITE ALL LOCATIONS AND SIZES OF ALL SERVICES & EQUIPMENT PRIOR TO THE COMMENCEMENT OF WORK.
 - ALL OPENINGS THAT RESULT FROM THE REMOVAL OF EQUIPMENT OR SERVICES SHALL BE NEATLY PATCHED WITH SUITABLE NEW MATERIALS TO SUIT EXISTING CONSTRUCTION.
 - PLUMBING VENTS ARE NOT INDICATED OR IDENTIFIED. REMOVE ALL REDUNDANT VENTS WHILE MAINTAINING INTEGRITY OF EXISTING SYSTEMS TO REMAIN.
 - REMOVAL OF EXISTING PIPING, OR DUCT SYSTEMS INCLUDES REMOVAL OF ALL HANGERS, INSULATION, FITTINGS, ETC.
 - MAINTAIN INTEGRITY OF EXISTING SYSTEMS THAT ARE TO REMAIN OR BE MODIFIED.
 - INSTALL NEW SYSTEM OR SERVICES WHERE REQUIRED TO MAINTAIN SYSTEM OPERATION PRIOR TO DEMOLITION OF EXISTING SERVICES.
 - THIS CONTRACTOR IS TO REMOVE & REPLACE CEILINGS AS REQUIRED FOR REMOVAL/REPLACEMENT OF SERVICES.

- ### SPECIFIC HVAC DEMOLITION NOTES
- REMOVE EXISTING WALL GRILLE AND REMOVE CONNECTED DUCT BACK TO MAIN AND CAP. COORDINATE WITH ARCHITECT TO INFILL WALL AND MAKE GOOD SURFACES.
 - REMOVE EXISTING HEATING SUPPLY & RETURN PIPING ABOVE DUCTWORK CW ALL ASSOCIATED ACCESSORIES, VALVE AND CONTROLS. SALVAGE ALL REMOVED ITEMS FOR REINSTALLATION IN THE NEW LOCATION UPON COMPLETION OF NEW ROOF INSTALLATION. REFER TO RENOVATION PLANS FOR NEW LOCATION.
 - REMOVE EXISTING DUCTWORK CW ALL ASSOCIATED ACCESSORIES AND DIFFUSERS/ GRILLES. SALVAGE ALL REMOVED ITEMS FOR REINSTALLATION IN THE NEW LOCATION UPON COMPLETION OF NEW ROOF INSTALLATION. REFER TO RENOVATION PLANS FOR NEW LOCATION.
 - REMOVE EXISTING 2400mm X 600mm INTAKE AIR LOUVER CW MOTORIZED DAMPER AND ALL ASSOCIATED ACCESSORIES. SALVAGE ALL REMOVED ITEMS FOR REINSTALLATION IN THE NEW LOCATION UPON COMPLETION OF NEW ROOF INSTALLATION. REFER TO RENOVATION PLANS FOR NEW LOCATION.
 - REMOVE EXISTING DUCTWORK CW ALL ASSOCIATED ACCESSORIES. SALVAGE ALL REMOVED ITEMS FOR REINSTALLATION IN THE NEW LOCATION UPON COMPLETION OF NEW ROOF INSTALLATION. REFER TO RENOVATION PLANS FOR NEW LOCATION.
- ### SPECIFIC PLUMBING DEMOLITION NOTES
- REMOVE EXISTING SINK AND ALL ASSOCIATED ACCESSORIES. PREPARE AND REROUTE COLD WATER, SANITARY, AND VENT SERVICES AS REQUIRED FOR CONNECTION TO NEW SINK AND TO SUIT NEW LAYOUT.
 - CUT EXISTING 1000 BURIED SANITARY PIPING & REMOVE BEYOND COMPLETE. PREPARE FOR NEW CONNECTION AS REQUIRED IN NEW LAYOUT.
 - CUT EXISTING 320 HOT & COLD WATER PIPING & REMOVE BEYOND COMPLETE. PREPARE FOR NEW CONNECTION AS REQUIRED IN NEW LAYOUT.



PART GROUND FLOOR HVAC DEMO
SCALE: 1:100



PART GROUND FLOOR PLUMBING DEMO
SCALE: 1:100

