

GENERAL NOTES :

THIS DRAWING TO BE READ IN CONJUNCTION WITH THE ASSOCIATED WINDOW SPECIFICATION FORMING THIS TENDER DOCUMENT

ANY DISCREPANCIES, ERRORS OR OMISSIONS WITHIN THIS DRAWING OR ASSOCIATED SPECIFICATIONS SHOULD BE BROUGHT TO THE ATTENTION OF THE CONSULTANT, FOR EXPLANATION AND/OR CORRECTIONS.

= PHOTOGRAPH NUMBER
= WINDOW TYPES

PROJECT NORTH

LOCATION
2510 CAVENDISH DRIVE
BURLINGTON, ONTARIO

SCHOOL
Bruce T. Lindley Public School

ARCHITECT

CONSULTANT
KYS CONSULTING AND PROJECT MANAGEMENT INC.
6 QUEEN'S COURT, GRIMSBY ON.
L3M 1C1
Tel : 905-643-3808
Fax : 905-643-3809
MOBILE : 905-921-2808

PROFESSIONAL STAMP

NO.	DESCRIPTION	DATE

NO. DESCRIPTION DATE

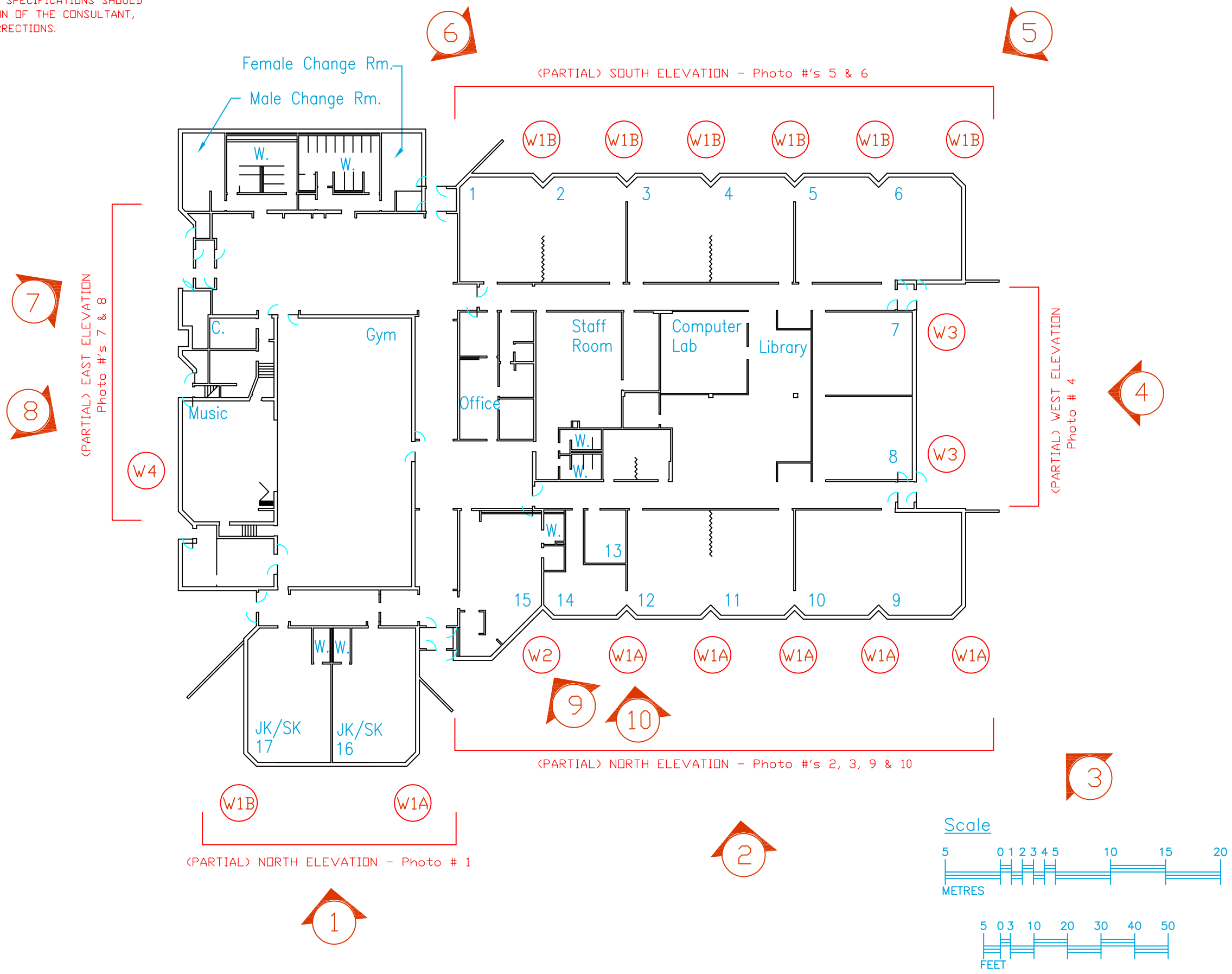
REVISIONS/DRAWING ISSUE

WINDOWS REPLACEMENTS
BRUCE T. LINDLEY PUBLIC SCHOOL

2510 CAVENDISH DRIVE
BURLINGTON, ONTARIO
L7P 4K5

AC K.T.S.
100-02-2026

NTS 30/01/26



FIRST FLOOR PLAN

A-1



PROJECT NORTH

LOCATION
2510 CAVENDISH DRIVE
BURLINGTON, ONTARIO

SCHOOL
Bruce T. Lindley Public School

ARCHITECT

CONSULTANT

KTS CONSULTING AND PROJECT MANAGEMENT INC.
6 QUEEN'S COURT, GRIMSBY ON.
L5M 1C1
Tel : 905-643-3888
Fax : 905-643-3889
MOBILE : 905-921-2808

PROFESSIONAL STAMP

NO. DESCRIPTION DATE
REVISIONS/DRAWING ISSUE

WINDOWS REPLACEMENTS
BRUCE T. LINDLEY
PUBLIC SCHOOL

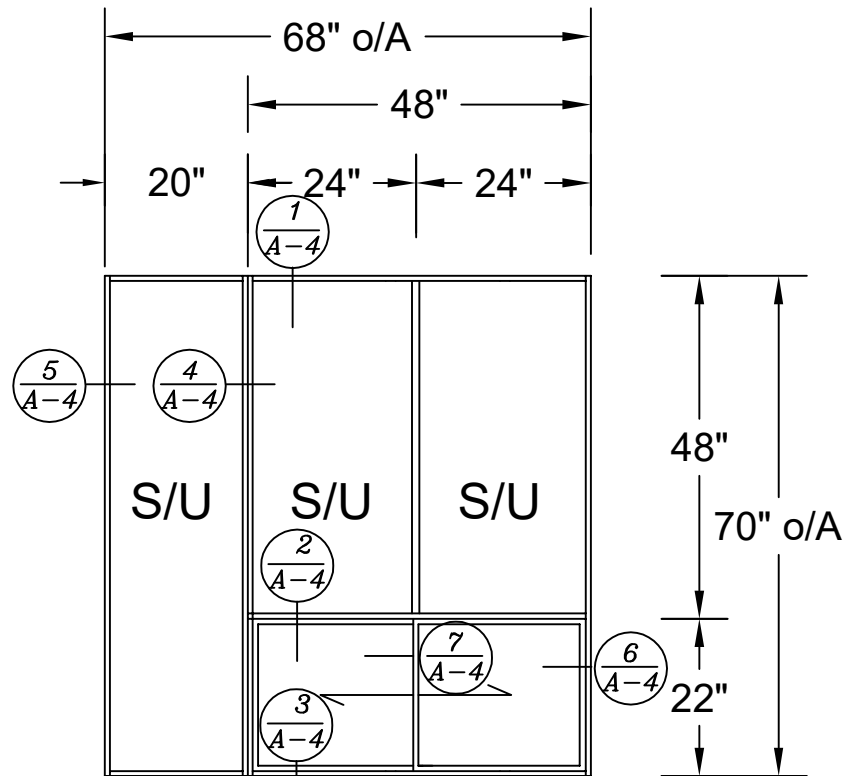
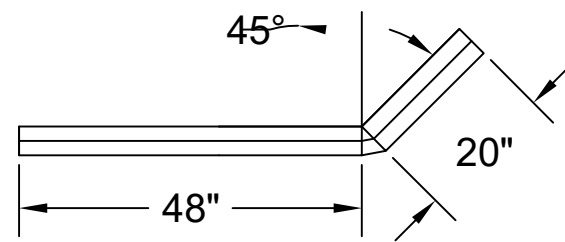
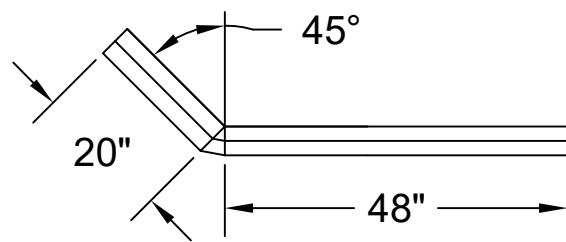
2510 CAVENDISH DRIVE
BURLINGTON, ONTARIO
L7P 4K5

AC K.T.S.
100-02-2026

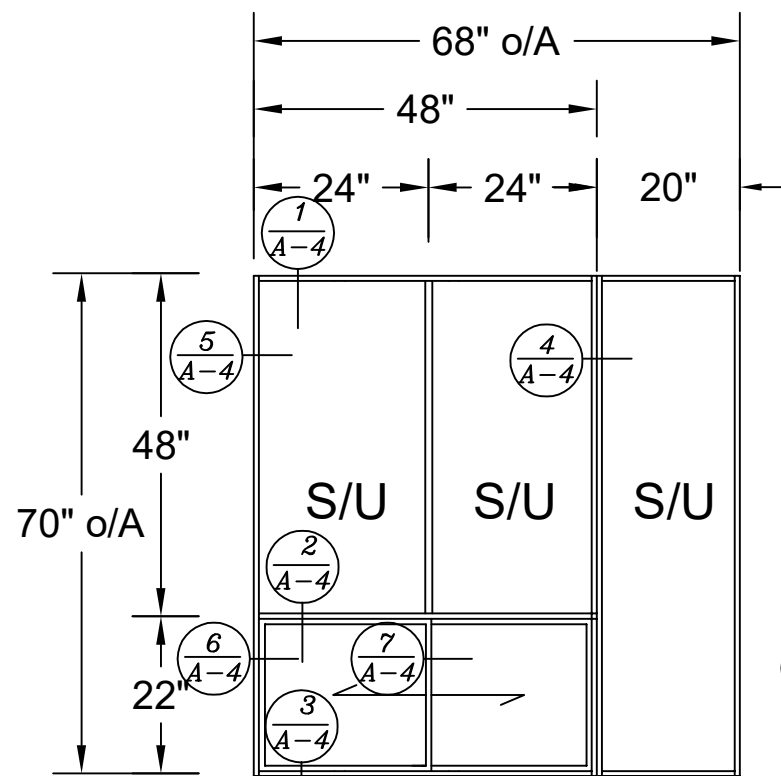
NTS 30/01/26

WINDOWS FENESTRATIONS

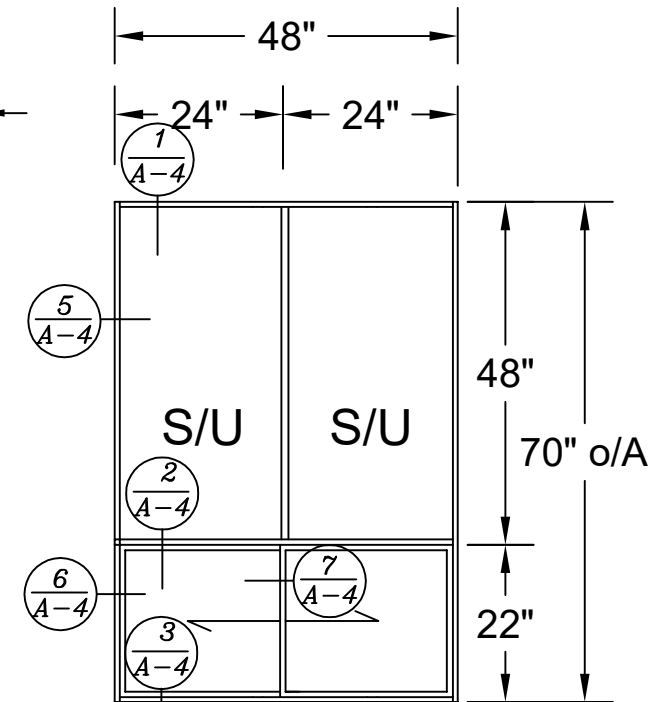
A-2



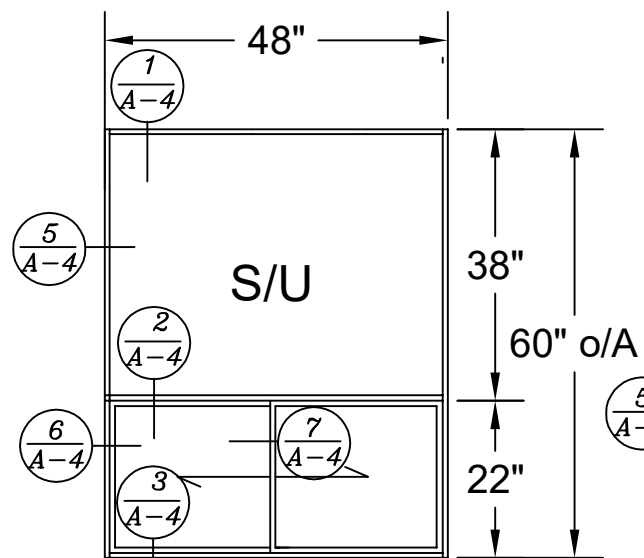
(W1A) - 6 Required



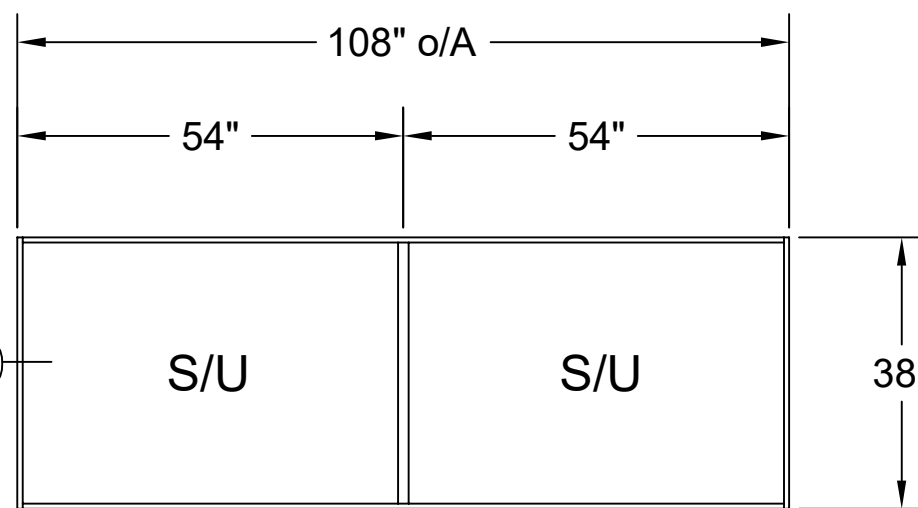
(W1B) - 7 Required



W2 - 1 Req

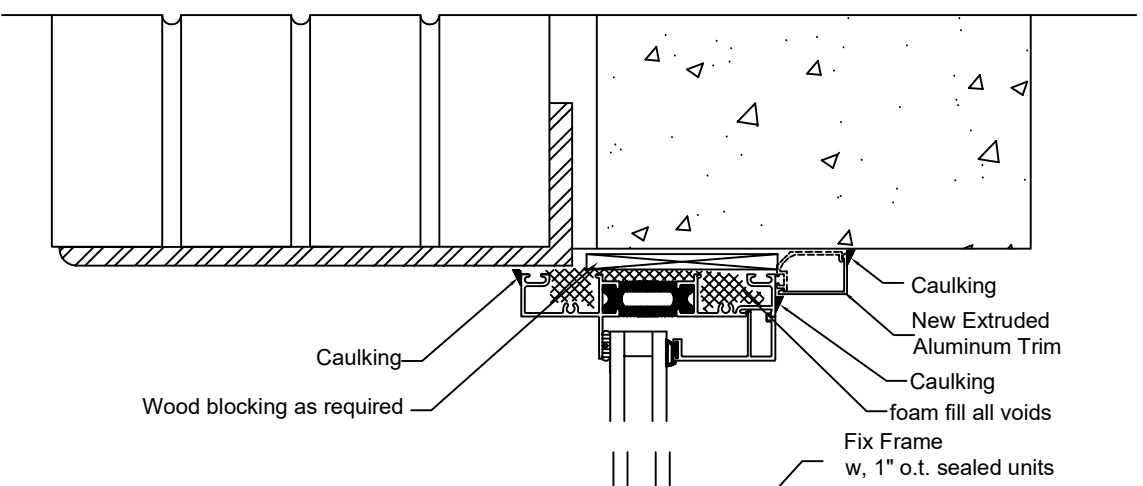


W3 - 2 Req.



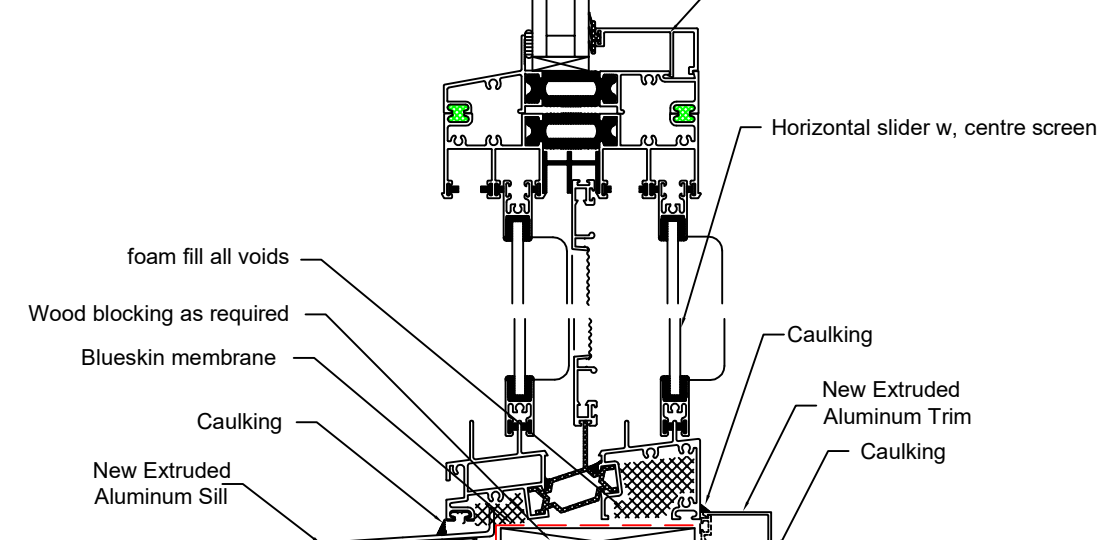
W4 - 1 Req.

1
A-4



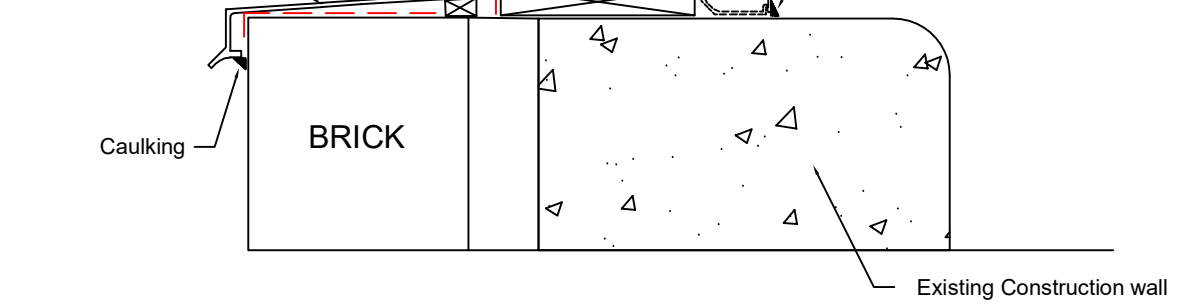
EXTERIOR

2
A-4



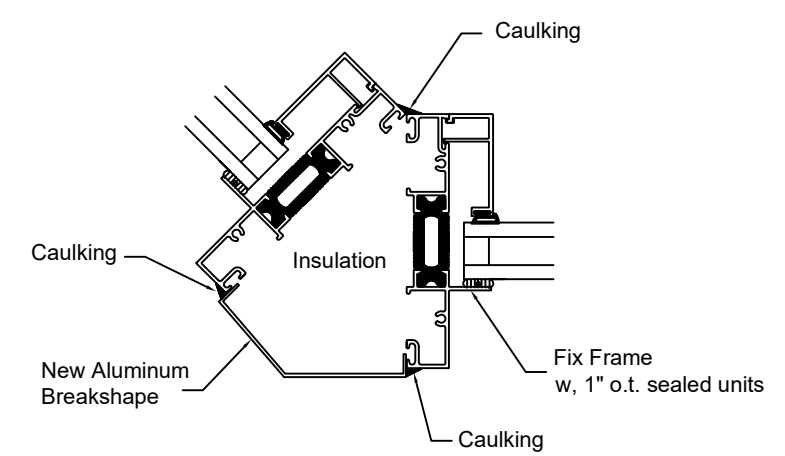
SILL

3
A-4

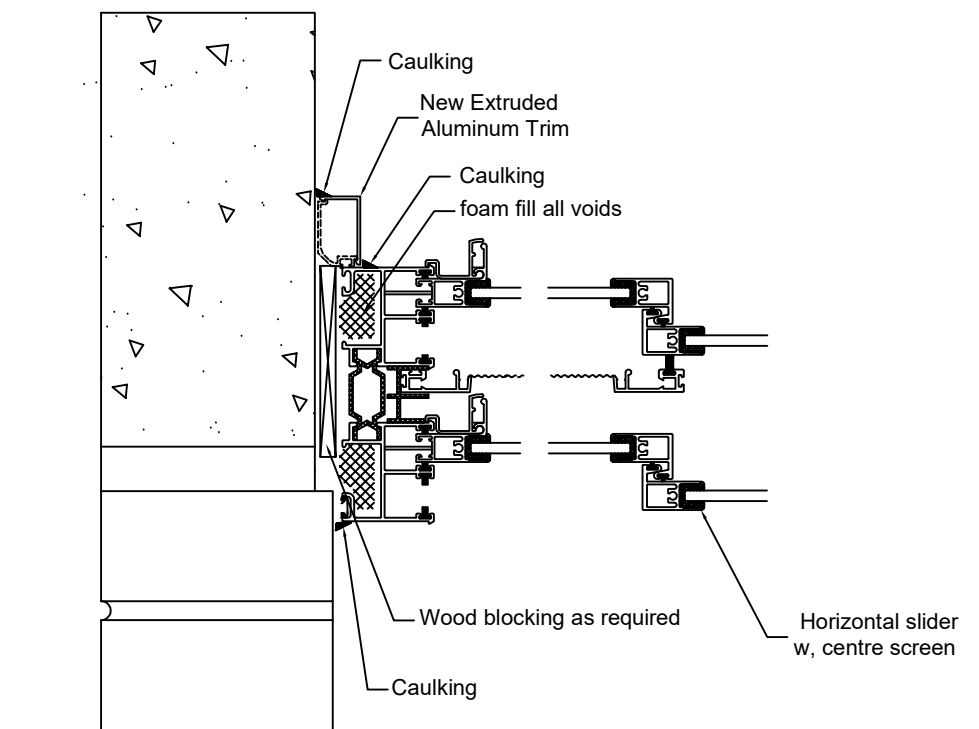
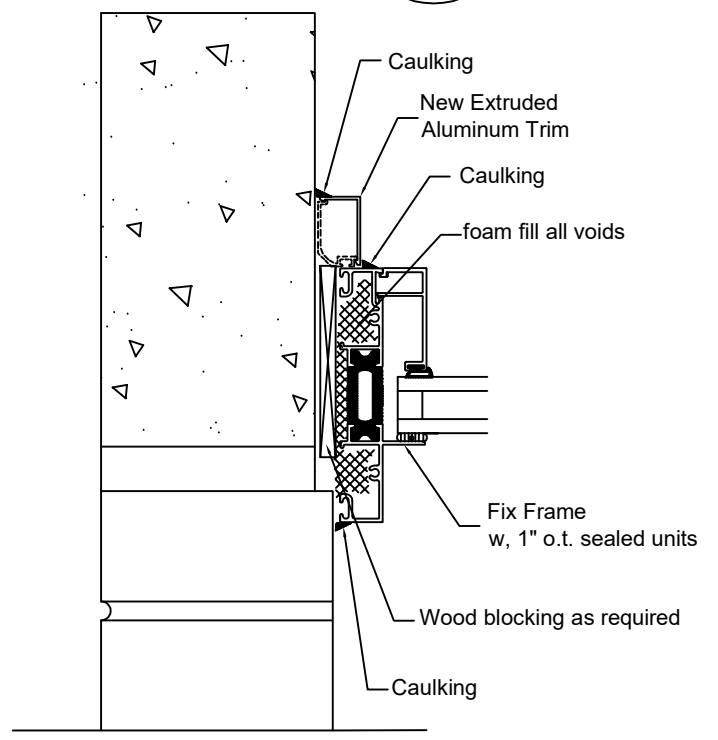


Corner Detail

4
A-4



5
A-4



EXTERIOR

6
A-4

7
A-4

LOCATION
2510 CAVENDISH DRIVE
BURLINGTON, ONTARIO

SCHOOL
Bruce T. Lindley Public School

ARCHITECT

CONSULTANT

KYS CONSULTING AND PROJECT MANAGEMENT INC.
6 QUEEN'S COURT, GRIMSBY ON.
L5M 1C1
Tel : 905-643-3398
Fax : 905-643-3689
MOBILE : 905-921-2808

PROFESSIONAL STAMP

NO.	DESCRIPTION	DATE

WINDOWS REPLACEMENTS
BRUCE T. LINDLEY
PUBLIC SCHOOL

2510 CAVENDISH DRIVE
BURLINGTON, ONTARIO
L7P 4K5

AC
K.T.S.
100-02-2026

NTS
30/01/26

WINDOW DETAILS

A-4

Bruce T. Lindley Public School
Burlington, ON.
Window Replacement – 2026

PHOTOGRAPHIC LOG



PHOTO #1 – VIEW OF PARTIAL NORTH (FRONT) ELEVATION



PHOTO #2 – VIEW OF PARTIAL NORTH (FRONT) ELEVATION

Bruce T. Lindley Public School
Burlington, ON.
Window Replacement – 2026

PHOTOGRAPHIC LOG



PHOTO #3 – (ALT) VIEW OF PARTIAL NORTH (FRONT) ELEVATION



PHOTO #4 – VIEW OF PARTIAL WEST ELEVATION

Bruce T. Lindley Public School
Burlington, ON.
Window Replacement – 2026

PHOTOGRAPHIC LOG



PHOTO #5 – VIEW OF PARTIAL SOUTH (REAR) ELEVATION



PHOTO #6 – (ALT) VIEW OF PARTIAL SOUTH (REAR) ELEVATION

Bruce T. Lindley Public School
Burlington, ON.
Window Replacement – 2026

PHOTOGRAPHIC LOG



PHOTO #7 – VIEW OF PARTIAL EAST ELEVATION



PHOTO #8 – VIEW OF PARTIAL EAST ELEVATION

Bruce T. Lindley Public School
Burlington, ON.
Window Replacement – 2026

PHOTOGRAPHIC LOG



PHOTO #9 – TYPICAL VIEW OF W1A WINDOW



PHOTO #10 – VIEW OF W2 WINDOW

Bruce T. Lindley Public School
Burlington, ON.
Window Replacement – 2026

PHOTOGRAPHIC LOG



PHOTO #11 – EXTERIOR HEAD DETAIL @ W1A WINDOW



PHOTO #12 – EXTERIOR SILL DETAIL @ W1A WINDOW

Bruce T. Lindley Public School
Burlington, ON.
Window Replacement – 2026

PHOTOGRAPHIC LOG



PHOTO #13 – TYPICAL EXTERIOR WINDOW HEAD / JAMB DETAIL



PHOTO #14 – TYPICAL EXTERIOR WINDOW JAMB / SILL DETAIL

Bruce T. Lindley Public School
Burlington, ON.
Window Replacement – 2026

PHOTOGRAPHIC LOG



PHOTO #15 – TYPICAL INTERIOR WINDOW HEAD / JAMB DETAIL



PHOTO #16 – TYPICAL INTERIOR WINDOW JAMB / SILL DETAIL

Bruce T. Lindley Public School
Burlington, ON.
Window Replacement – 2026

PHOTOGRAPHIC LOG



PHOTO #17 – WINDOW HEAD DETAIL @ W1A / W1B CORNER



PHOTO #18 – WINDOW SILL DETAIL @ W1A / W1B CORNER

End of Photographic Log