



Halton District School Board

Addendum No. 1

RFT 26-030 Oakville #5 Elementary School & Child Care Facility

The following, issued by the Halton District School Board (HDSB) January 27, 2026, shall be incorporated in the specifications and shall form part of the proposal document for the above.

ATTACHED:

Bidders are asked to review the attached Addendum # 1 as drafted by Hossack & Associates Architects with an issuance date of January 26, 2026. (4 pages)

RECEIPT OF ADDENDA MUST BE ACKNOWLEDGED ON THE FORM OF QUOTATION.

**PAGE 1 OF 5
END OF ADDENDUM 1**

RFT 26-030 Oakville #5 Elementary School & Child Care Facility

PROJECT NO. 22125

HOSSACK & ASSOCIATES ARCHITECTS

ADDENDUM NO. 1**Issued January 26, 2026**

The following additions, deletions, modifications and clarifications issued herein are hereby an integral part of the Tender and Contract Documents. Minor Typographic or spelling mistakes in the Contract Documents which do not significantly affect the meaning of the sentence or phrase in which they occur may not necessarily be corrected by Addenda.

GENERAL

1. Ensure that all parties submitting bids are aware of this **Addendum No. 1** and its contents.
2. **Contents:** Addendum No. 1 - in its entirety consists of the following:
 - .1 Two (2) typed pages of instructions and two (2) SKA drawings 8.5" x 11" and 11" x 17".

AMENDMENTS TO SPECIFICATIONS**Item 01: Section 09 65 16 Resilient Sheet Flooring:**

- .1 DELETE item 2.1.1.1.4 "Roppe..."

AMENDMENTS TO ARCHITECTURAL DRAWINGS**Item 02: Drawing SP1 Site Plan:**

- .1 REVISE: site plan legend annotation for fencing linetype ----o----o---- to read "**1.8m HIGH BLACK VINYL CHAINLINK FENCE.**"
- .2 REVISE the following items per drawing SKA1 dated January 23, 2026 enclosed:
 1. DELETE: 'CR' (Curb Ramp complete with Tactile Indicator) beside accessible street parking along Settlers Road West
 2. ADD: line painting and reinforced concrete pad at accessible street parking along Settlers Road West.
 3. ADD: new reinforced concrete sidewalk to municipal standard replacement and curb depression at site entrance along Settlers Road West.
 4. ADD: new reinforced concrete sidewalk to municipal standard replacement and curb depression at site entrance along Preserve Drive.
 5. ADD: concrete sidewalk dimensions and line painting at accessible street parking along Preserve Drive.

Item 03: Cover Page:

- .1 REVISE: Sprinkler Drawing page number series to read "SPK-1, SPK-2, SPK-3 and SPK-4" so as not to be confused with the site drawings.

Item 04: Drawing A09 Elevations:

- .1 DELETE: all 11-qty. sunshades on the North Elevation in entirety.
- .2 ADD: a total of 8-qty. sunshades on the East Elevation above the series of classrooms windows on the second and third floor as illustrated on drawing SKA2 Sunshades on Partial East Elevation dated January 23, 2026 enclosed.
- .3 CLARIFICATION: Follow detail 9/A16 Window Section Detail @ Sunshades for above sunshade revision.

RFT 26-030 Oakville #5 Elementary School & Child Care Facility

PROJECT NO. 22125

HOSSACK & ASSOCIATES ARCHITECTS

ADDENDUM NO. 1

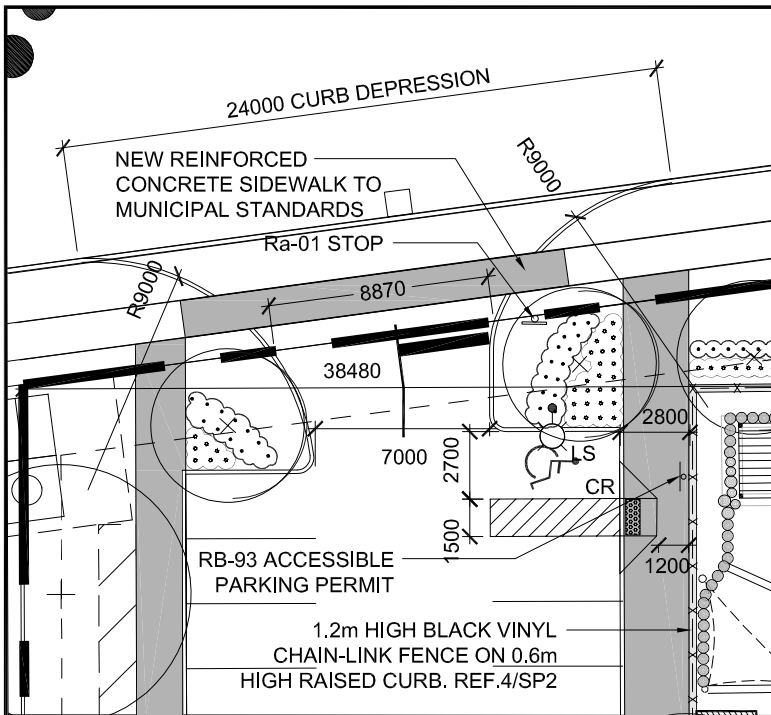
Issued January 26, 2026

MECHANICAL / SPRINKLER

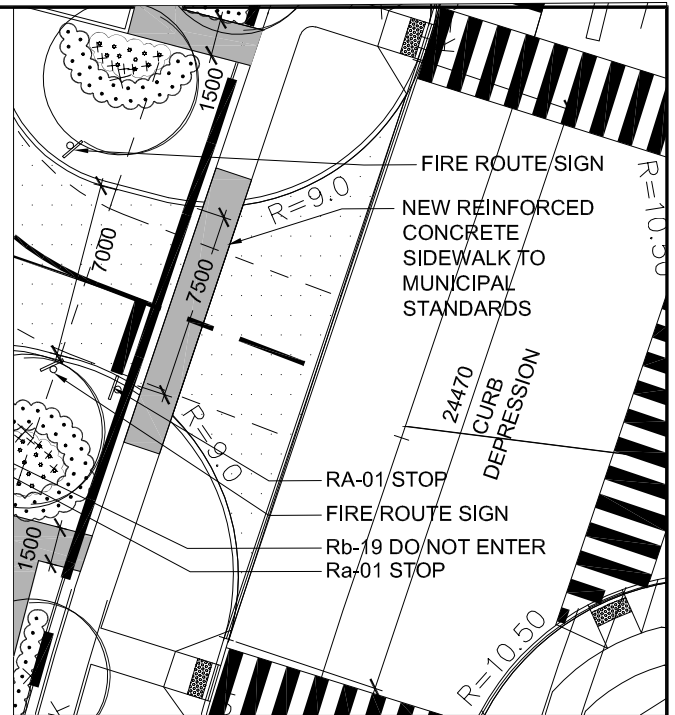
Item 05: Sprinkler Drawings (SP-1, SP-2, SP-3 and SP-4)

- .1 REVISE: Sprinkler Drawing page number series from "SP-1, SP-2, SP-3 and SP-4" to read "SPK-1, SPK-2, SPK-3 and SPK-4", so as not to be confused with the site drawings.

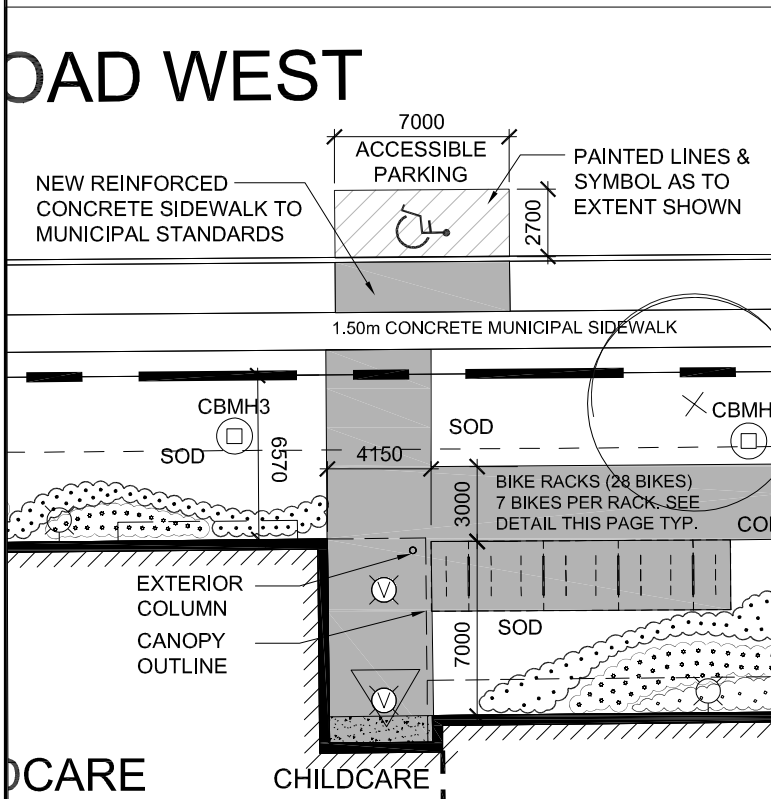
End of Addendum No. 1



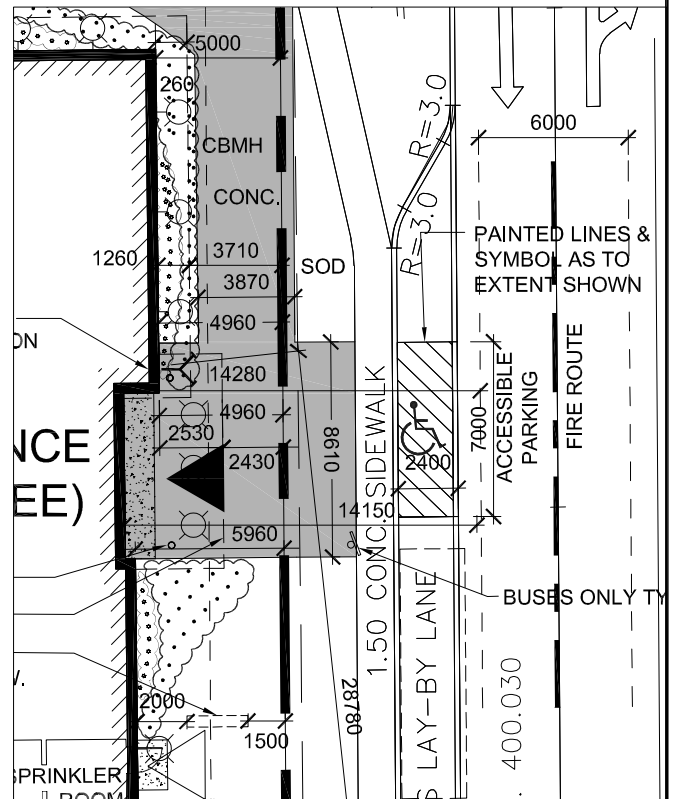
1
SKA1
DETAIL AT NORTH DRIVEWAY ENTRANCE
SCALE: 1:300



2
SKA1
DETAIL AT EAST DRIVEWAY
ENTRANCE
SCALE: 1:300



3
SKA1
DETAIL @ ROAD @ CHILD CARE ENTRANCE
SCALE: 1:300



4
SKA1
DETAIL @ ROAD @ MAIN
ENTRANCE
SCALE: 1:300

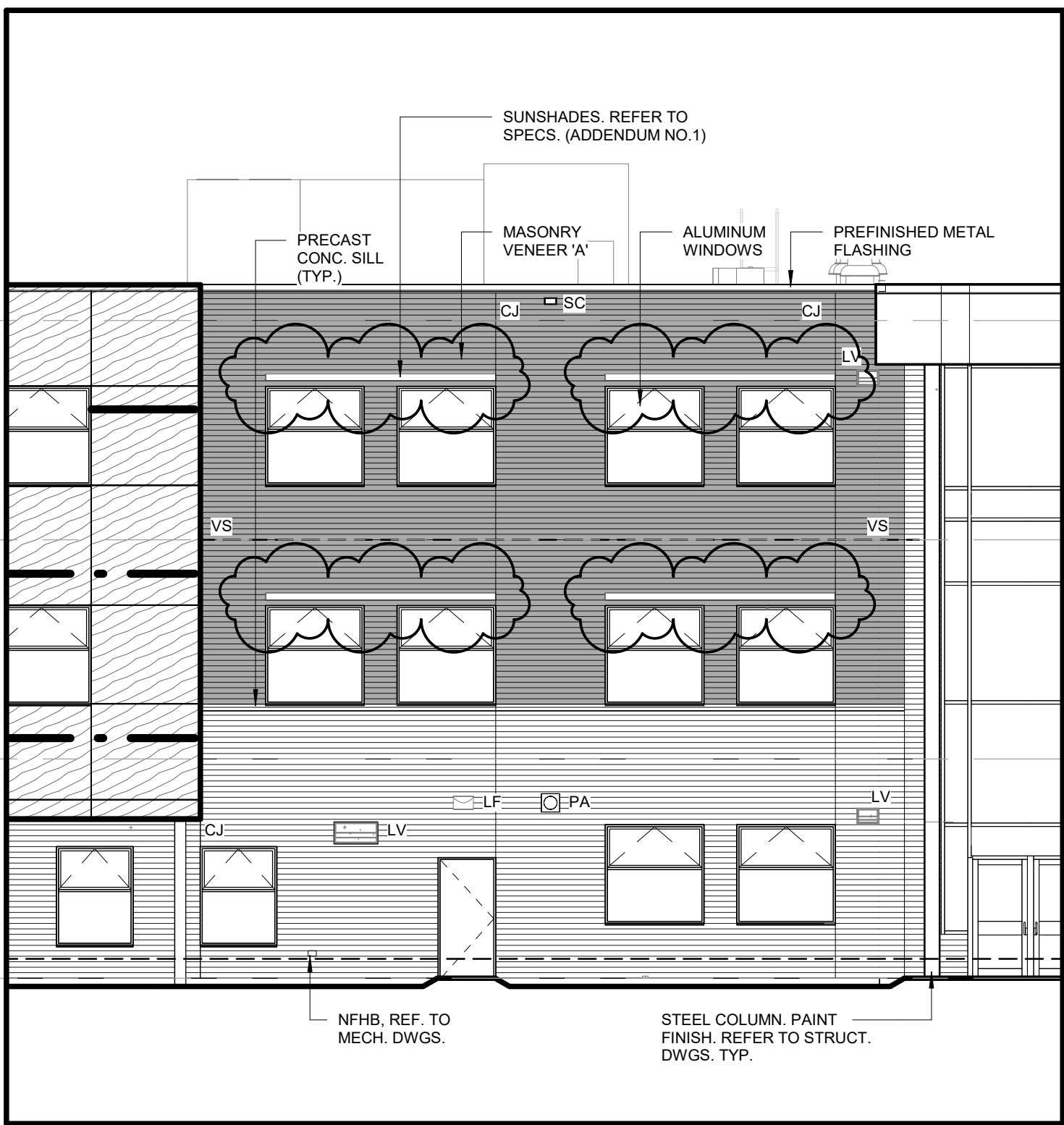
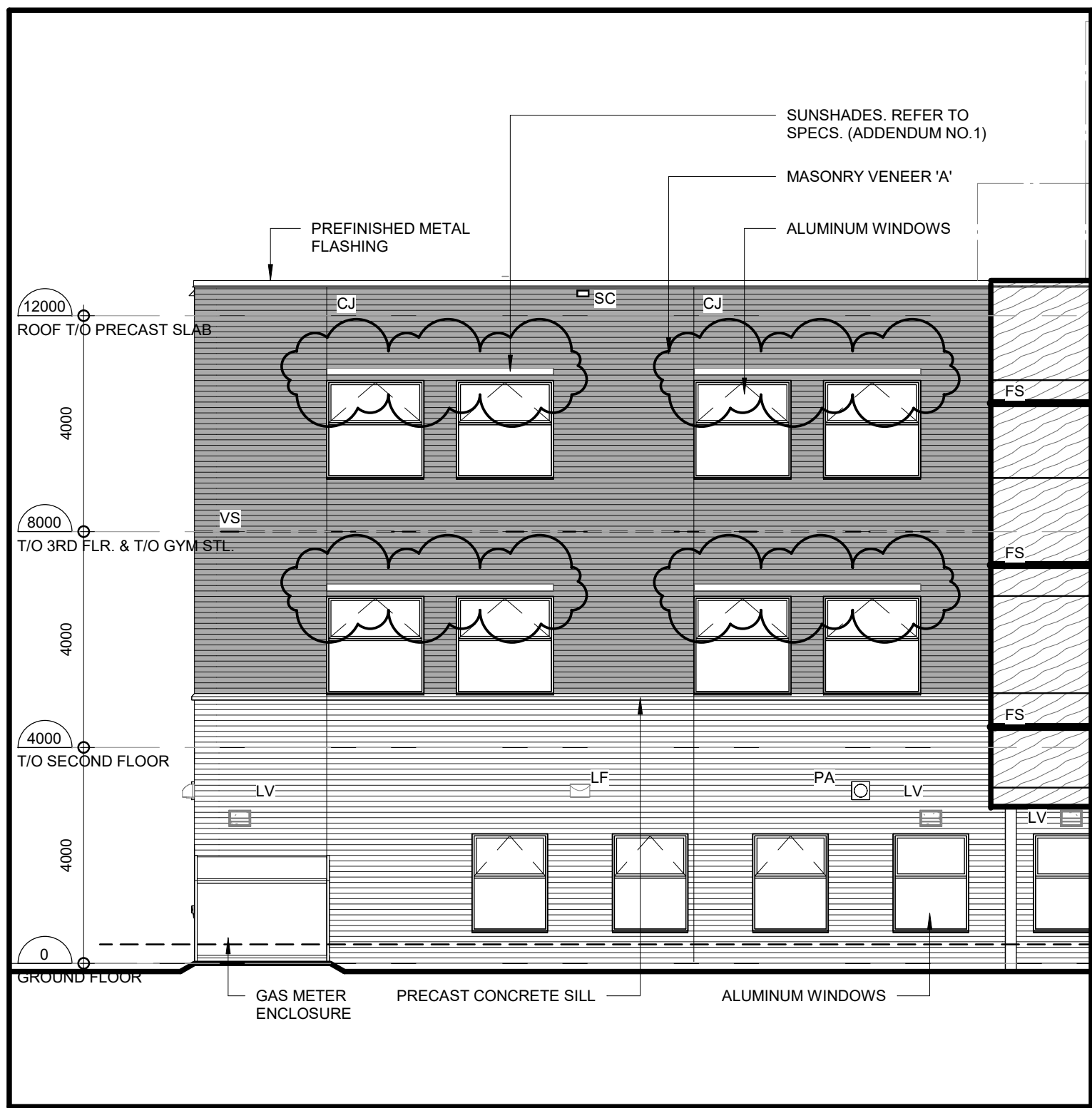
SITE PLAN CHANGES

PROJ: 22125
SCALE: N.T.S.
DRAWN: CC
DATE: 260123



ISSUE/REV.
ADD#01

SKA
1



SUNSHADES ON PARTIAL EAST ELEVATION

PROJ:	22125
SCALE:	1 : 100
DRAWN:	KB
DATE:	26 01 23



ISSUE/REV.	ADD#01
SKA	2