











CIRCUITING

Diagram illustrating the circuiting of a panel designation:

- BLDG-E1MDPHA 10**
 - CIRCUIT NUMBER
 - PANEL DESIGNATION
- 3#12 #125.21mmC**
 - CONDUIT SIZE
 - GROUND CONDUCTOR QUANTITY AND SIZE
 - CIRCUIT CONDUCTOR QUANTITY AND SIZE

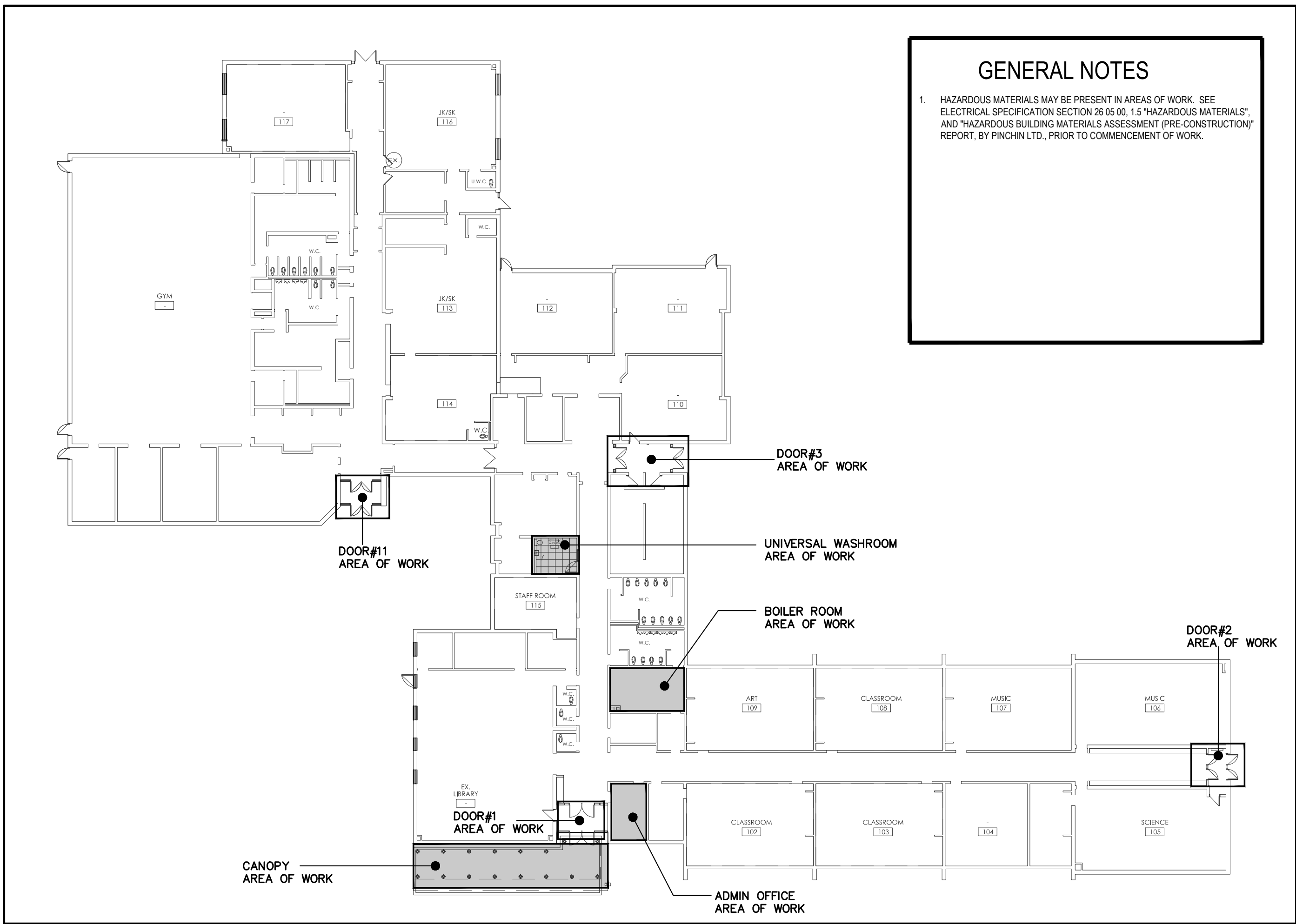
FIRE ALARM SYSTEM			
	FIRE ALARM STROBE, WALL MOUNTED		FIRE ALARM STROBE, CEILING MOUNTED
	FIRE ALARM HORN, WALL MOUNTED		FIRE ALARM HORN, CEILING MOUNTED
	FIRE ALARM CONTROL PANEL		HEAT DETECTOR, CEILING MOUNTED
	FIRE ALARM REMOTE ANNUNCIATOR PANEL		

ABBREVIATIONS			
A	ANALOG	MCB	MAIN CIRCUIT BREAKER
AFCI	ARC FAULT CIRCUIT INTERRUPTOR	MCC	MOTOR CONTROL CENTER
AFF	ABOVE FINISHED FLOOR	MD	MOTORIZED DAMPER
ATS	AUTOMATIC TRANSFER SWITCH	MH	MOUNTING HEIGHT
BM	BEAM MOUNTED	NC	NORMALLY CLOSED
CK	CLOCK HANGER	NO	NORMALLY OPEN
CL	CEILING MOUNTED	OC	OVER THE COUNTER
EMT	ELECTRICAL METALLIC TUBING	PL	POLE MOUNTED
EP	EXPLOSION PROOF	PTZ	PAN, TILT, ZOOM
F	FURNITURE OR MILL/WORK MOUNTED	ST	SHUNT TRIP
FL	FLOOR MOUNTED	TP	THUMP PROOF
GFCI	GROUND FAULT CIRCUIT INTERRUPTER	WP	WEATHER PROOF
GFI	GROUND FAULT INTERRUPTER		

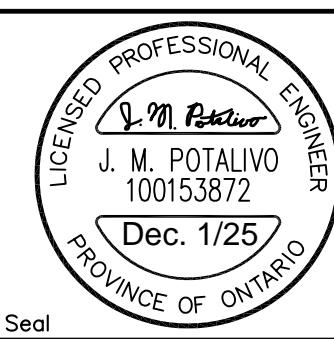
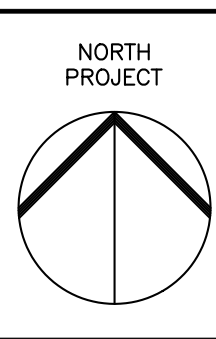
DEMOLITION	
< R >	EXISTING TO BE REMOVED
< RL >	EXISTING TO BE RELOCATED
< EX >	EXISTING TO REMAIN
< NL >	EXISTING - NEW LOCATION
----	DEMOLITION CONDUIT
	DEMOLITION EQUIPMENT
=====	EXISTING TO REMAIN CONDUIT
	EXISTING TO REMAIN EQUIPMENT
=====	RELOCATED / NEW CONDUIT
	RELOCATED / NEW EQUIPMENT

<h2 style="margin: 0;">SECURITY SYSTEM</h2>			
<p><u>DEVICE LEGEND</u></p> <div style="display: flex; align-items: center; justify-content: space-around; margin-top: 20px;"> <div style="text-align: center;"> DEVICE TAG → AAA^M </div> <div style="text-align: center;"> ← MOUNTING TAG ← SECONDARY ATTRIBUTE </div> </div> <p style="margin-top: 20px;">ALL SECURITY SYSTEM DEVICES ARE WALL MOUNTED UNLESS OTHERWISE INDICATED BY MOUNTING TAG</p>			
[ES]	ELECTRIC STRIKE	[ADO]	AUTO DOOR OPERATOR
[PP]	PUSH PLATE	[PB]	PUSH BUTTON
[IC]	INTERCOM		

TYPE	DESCRIPTION	MODEL NUMBER	MANUFACTURER	LAMP	VOLT	MOUNTING
R1	2 X 2' CFI EVOGRID RECESSED LED FIXTURE	2EVG4S-840-2-D-UNV-DIM	SIGNIFY	LED, 39W 4300 LUMENS 80CRI, 4000K	120V	RECESSED
R2	2 X 4' CFI FLUXPANEL RECESSED LED FIXTURE NOTE: PART#FMA14 FOR DRYWALL KIT	2FPZ-43L-840-4-DS-UNV	SIGNIFY	LED, 30W 4300 LUMENS 80CRI, 4000K	120V	RECESSED
R3	1" X 4' CFI FLUXPANEL RECESSED LED FIXTURE	1FPZ-38L-840-4-DS-UNV	SIGNIFY	LED, 30W 3800 LUMENS 80CRI, 4000K	120V	RECESSED
S1	4" LMNE-VL WRAP LED FIXTURE	LMNE-VL-48-LED840K037UNV	LEVITON	LED, 28.8W 3700 LUMENS 80CRI, 4000K	120V	SURFACE
S2	SFC SLENDER 3" THIN CANOPY LED FIXTURE	SFC-MR-5W-48L-250- NW-G2- UNV	GARCO	LED, 38.5W 4800 LUMENS 70CRI, 4000K	120V	SURFACE
D	4" EASYLYTE LED DOWNLIGHT FIXTURE	Z4RDL15940WOWH	SIGNIFY	LED, 15W 1500 LUMENS 80CRI, 4000K	120V	RECESSED
E1	REMOTE LED EMERGENCY HEADS 24V 5 WATTS PER HEAD	SINGLE - MQMP-INXLD13-SM	LUMACELL	24V, CONFIRM ON SITE	120V	SURFACE
W	LITEPAK MID-SIZE LED WALLPACK	LNC3-24L-4K-050-3-U-DB-PCU	HUBBELL	LED, 41W 3991 LUMENS 80CRI, 4000K	120V	SURFACE
M1	KENDO M RECESSED - STATIC WHITE STRIP LED 8FT (FOR MILLWORK)	KRM-96-72SD-41K-C-GS-WH	LUMINI	LED, 21W 1776 LUMENS 90+CRI, 4000K	24VDC CLASS 2	RECESSED



 **KEY PLAN**
N.T.S.



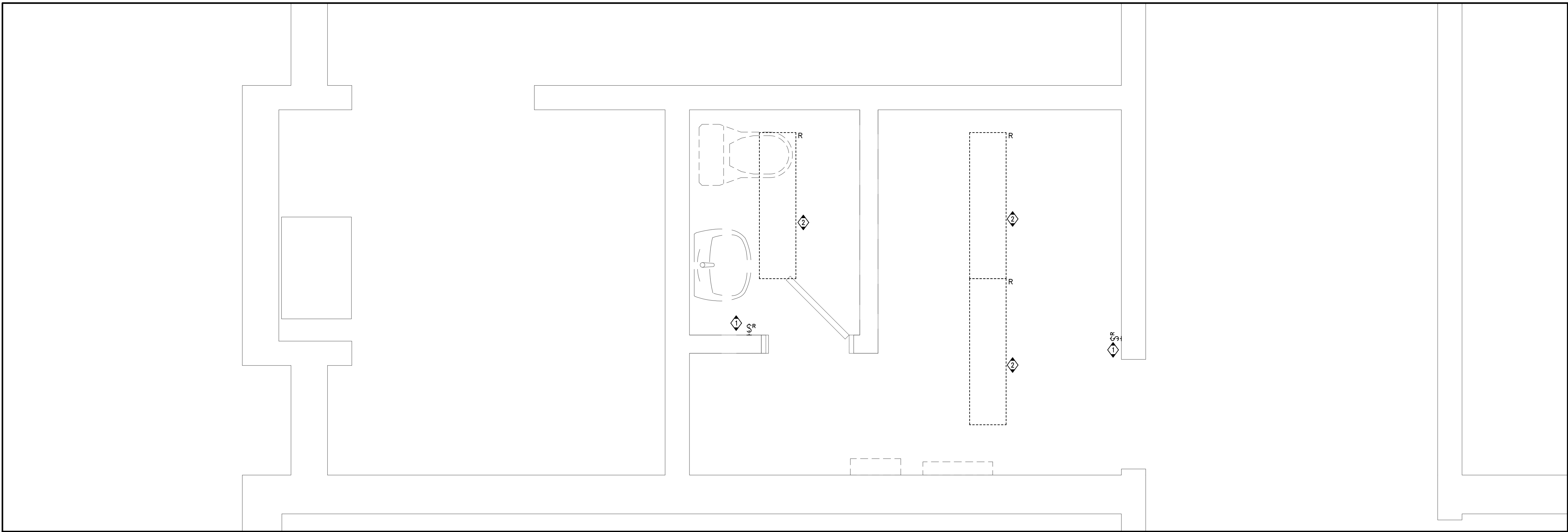
EXP Services Inc.
t: 905.525.6069 | f: 905.528.7310
1206 South Service Road,
Suite G1-1, Stony Creek,
ON, L8E 5R9
Canada

www.exp.com

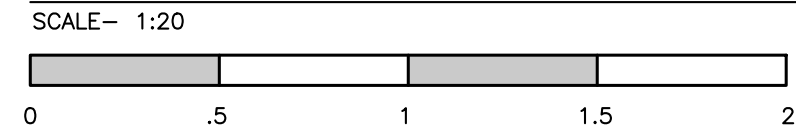
• BUILDINGS • EARTH & ENVIRONMENT • ENERGY •
• INDUSTRIAL • INFRASTRUCTURE • SUSTAINABILITY •



Project Title: KILBRIDE PUBLIC SCHOOL 6611 PANTON STREET KILBRIDE, ONTARIO	Drawn: AC	Scale: AS NOTED	
	Date: FEBRUARY, 2025	Project Number: ALL-25001986-A0	
Drawing Title: ELECTRICAL LEGEND, DRAWING LIST AND KEY PLAN	Checked: JP	This Set Contains Drawings	Drawing Number:
	Date: FEBRUARY, 2025		E0.0
			Revision



PARTIAL FLOOR PLAN – UNIVERSAL WASHROOM – LIGHTING – DEMOLITION PLAN

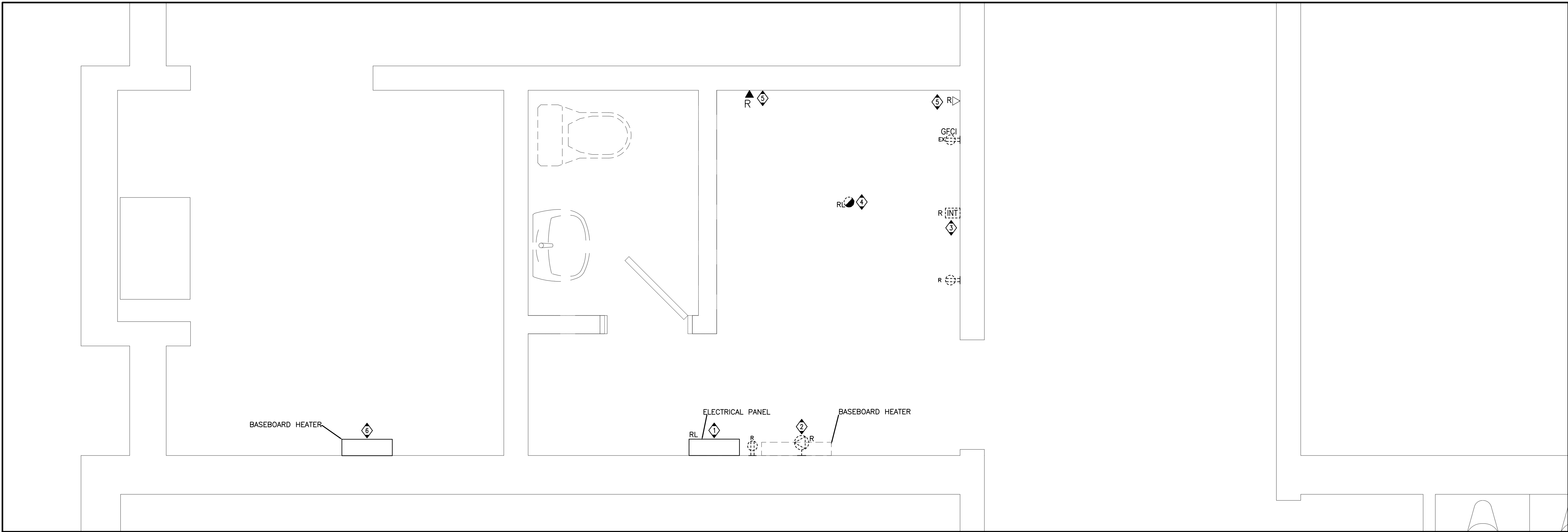


DRAWING NOTES

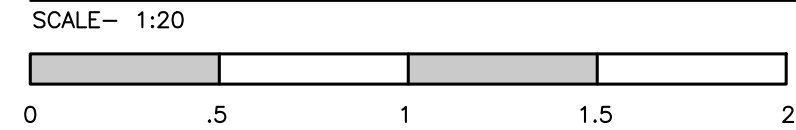
- 1 DISCONNECT AND REMOVE EXISTING LIGHT SWITCHES AND CONTROLS. PROTECT EXISTING CIRCUIT FOR RE-USE.
- 2 DISCONNECT AND REMOVE EXISTING FIXTURES. PROTECT EXISTING CIRCUIT FOR REUSE. REFER TO DRAWING E2.0 FOR NEW FIXTURE LOCATION.

GENERAL NOTES

1. THE ELECTRICAL CONTRACTOR SHALL, AS PART OF HIS WORK, PERFORM ALL RELATED DEMOLITION, MODIFICATIONS, RELOCATION OF ELECTRICAL DISTRIBUTION AND OTHER EQUIPMENT AND RELATED WORK, INCLUDING NEW WORK NECESSARY TO COMPLETE THE PROJECT.
2. THE ELECTRICAL CONTRACTOR SHALL VERIFY ALL FIELD CONDITIONS AND DIMENSIONS PRIOR TO SUBMITTING BIDS. REFER TO EXISTING DRAWINGS AND VISIT THE SITE TO DETERMINE THE EXTENT OF THE DEMOLITION AND NEW WORK REQUIRED.
3. LIGHTING FIXTURES: REMOVE LIGHTING FIXTURES AND SWITCH CONTROL WHEN THE FIXTURE TO BE REMOVED IS SERVED BY A CIRCUIT THAT SUPPLIES FIXTURES IN OTHER AREAS THAT ARE TO REMAIN, THE ELECTRICAL CONTRACTOR SHALL MAINTAIN THE CONTINUITY OF THE CIRCUIT TO THE REMAINING FIXTURES.



PARTIAL FLOOR PLAN – UNIVERSAL WASHROOM – POWER & SYSTEMS – DEMOLITION PLAN







DRAWING NOTES

- 1 DISCONNECT FEEDER TO EXISTING ELECTRICAL PANEL AND MAKE SAFE FOR RELOCATION. FEEDER SIZE AND OVERCURRENT PROTECTION LOCATION ARE TO BE DETERMINED ON SITE. QTY 2 - 15A, 2-POLE BREAKERS ARE TO BE MAINTAINED FOR BASEBOARD HEATERS CIRCUITS BEING MODIFIED TO SUIT. FOR TENDER PURPOSES, PROVISION FOR RELOCATION OF FEEDER SIZE UP TO 60A, 3-PHASE.
- 2 DISCONNECT THE EXISTING ELECTRICAL BASEBOARD HEATER FROM THE SOURCE PANEL AND MAKE IT SAFE FOR REMOVAL. REMOVE ASSOCIATED CONDUIT AND WIRING.
- 3 INTERCOM SYSTEM SCOPE REMOVAL BY HAMILTON VIDEO & SOUND. THIS CONTRACTOR TO REMOVE CONDUIT.
- 4 DISCONNECT AND REMOVE EXISTING HEAT DETECTOR FOR RELOCATION INTO NEW CEILING.
- 5 EXISTING COMMUNICATIONS LINE/JACK TO BE REMOVED INCLUDING BOX AND SURFACE MOUNTED RACEWAY.
- 6 EXISTING BASEBOARD HEATER CIRCUIT TO BE REWORKED FOR RELOCATION OF ELECTRICAL PANEL.

GENERAL NOTES

1. ALL WIRING, CABLES AND FEEDERS INCLUDING BOTH CONNECTED TO DEVICES AND EQUIPMENT TO BE DEMOLISHED AND EXISTING THAT WERE ABANDONED IN PLACE SHALL BE REMOVED BACK TO THEIR SOURCES UNLESS NOTED OTHERWISE. CONDUITS AND/OR WIRING SHALL WHERE NECESSARY BE RE-CIRCUIT AROUND THE REMOVED PART, KEEPING OCCUPIED PARTS OF THE BUILDING SYSTEM IN FULL SERVICE.
2. ALL EXISTING CONDUITS WHICH HAVE BEEN ABANDONED OR ARE UNUSED SHALL BE REMOVED.
3. PROVIDE BLANK METAL COVER PLATES FOR ALL JUNCTION/DEVICE BOXES NO LONGER IN USE THAT ARE EMBEDDED IN FLOOR SLAB OR MASONRY WALLS. PROVIDE PLUGS FOR ALL PANELS WHERE CONDUIT HAS BEEN REMOVED. COVER PLATES SHALL BE PAINTED TO MATCH EXISTING CONDITIONS.
4. POWER RECEPTACLES: REMOVE RECEPTACLES. WHEN THE RECEPTACLE TO BE REMOVED IS SERVED BY A CIRCUIT THAT SUPPLIES RECEPTACLES IN OTHER AREAS, THAT ARE TO REMAIN, THE ELECTRICAL CONTRACTOR SHALL MAINTAIN THE CONTINUITY OF THE CIRCUIT TO THE REMAINING RECEPTACLES.
5. FIRE ALARM SYSTEM: COORDINATE AND CONSULT WITH CURRENT FIA SYSTEM SERVICE CONTRACTOR OR THEIR QUALIFIED REPRESENTATIVE FOR ALL FIRE ALARM DEMOLITION AND MODIFICATIONS. OPERATION SHALL BE MAINTAINED OF EXISTING FIRE ALARM SYSTEM SPECIFICALLY AS IT RELATES TO ADJACENT AREAS WHICH ARE NOT INCLUDED IN THE SCOPE OF THIS PROJECT.

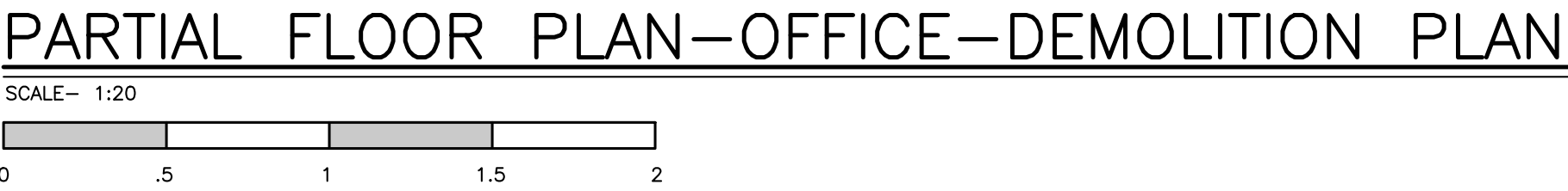
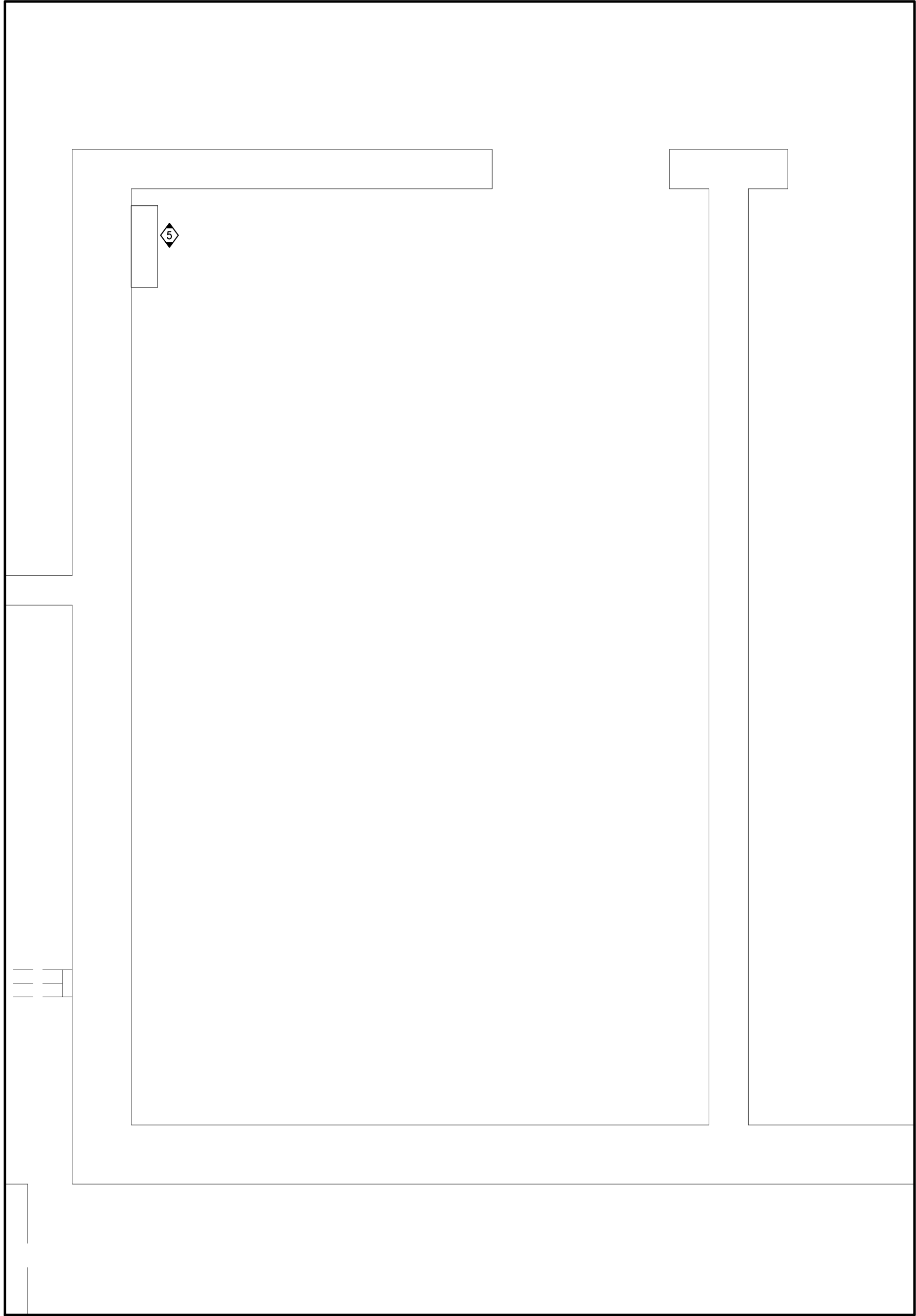
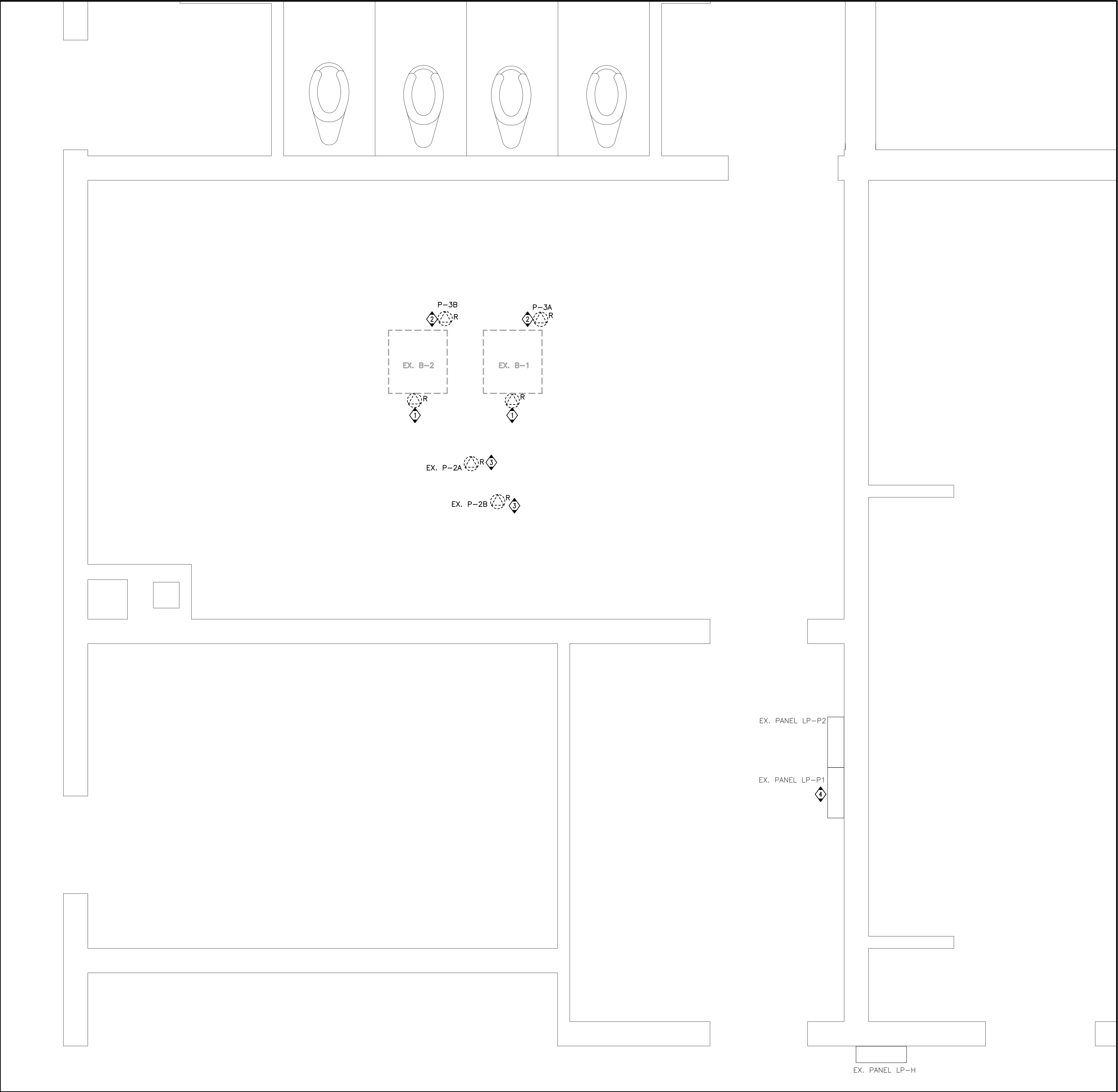
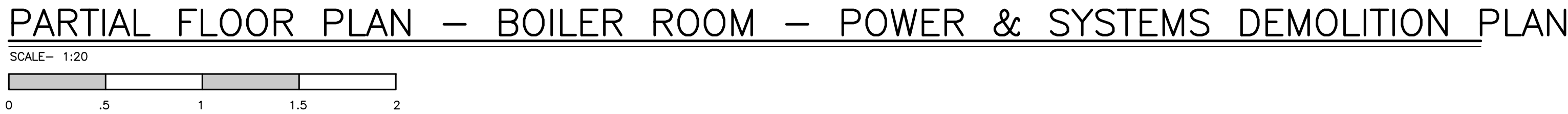
REVISIONS	Description/Date						Project Title: KILBRIDE PUBLIC SCHOOL 6611 PANTON STREET KILBRIDE, ONTARIO	Drawing Title: PARTIAL FLOOR PLAN - BARRIER FREE WASHROOM - DEMOLITION PLANS	Drawn: AC		Scale: AS NOTED			
	No.								Date:	FEBRUARY, 2025	Project Number:	ALL-25001986-A0		
	1	ISSUED FOR REVIEW							2025/02/28	Checked:	JP	This Set Contains Drawings	Drawing Number: E1.0	Revision
	2	ISSUED FOR TENDER READY SET							2025/03/31	Date:	FEBRUARY, 2025			
	3	ISSUED FOR PERMIT AND TENDER							2025/04/17					
4	ISSUED FOR PERMIT AND TENDER	2025/12/01												

EXP Services Inc.
1: 905.525.6069 | F: 905.528.7310
1266 South Service Road,
Suite C1-1, Stoney Creek,
ON, L8E 5R9
Canada

www.exp.com

• BUILDINGS • EARTH & ENVIRONMENT • ENERGY •
• INDUSTRIAL • INFRASTRUCTURE • SUSTAINABILITY •

REVISIONS	No.	Description/Date
	1	ISSUED FOR REVIEW 2025/02/28
	2	ISSUED FOR TENDER READY SET 2025/03/31
	3	ISSUED FOR PERMIT AND TENDER 2025/04/17
	4	ISSUED FOR PERMIT AND TENDER 2025/12/01







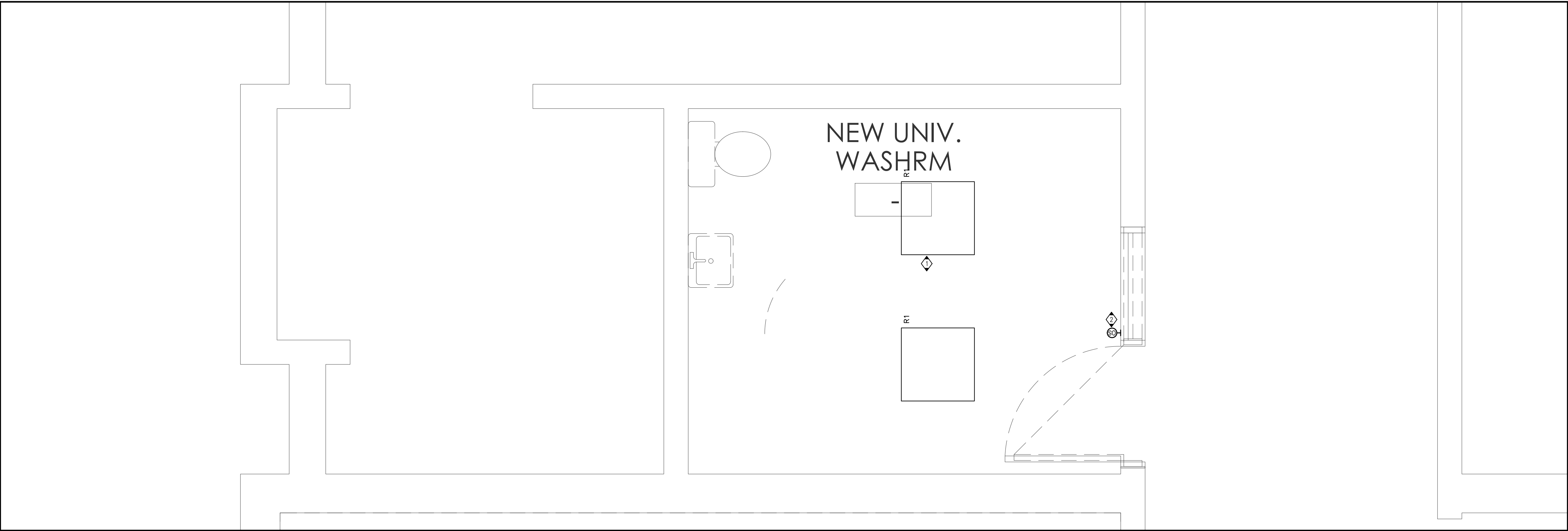
DRAWING NOTES

- 1 DISCONNECT THE EXISTING BOILER CONTROL PANEL FROM THE SOURCE PANEL & MAKE IT SAFE FOR REMOVAL. RETAIN THE EXISTING CIRCUIT TO FEED THE NEW BOILERS. REFER TO MECHANICAL DRAWINGS FOR EXACT LOCATION.
- 2 DISCONNECT THE EXISTING PUMP FROM THE SOURCE PANEL & MAKE IT SAFE FOR REMOVAL. RETAIN THE EXISTING CIRCUIT TO FEED THE NEW BOILER PUMPS. REFER TO MECHANICAL DRAWINGS FOR EXACT LOCATION.
- 3 DISCONNECT THE EXISTING HEATING PUMP FROM THE SOURCE PANEL & MAKE IT SAFE FOR RELOCATION. PROTECT EXISTING CIRCUIT.
- 4 EXISTING BOILER, BOILER PUMPS & CIRCULATOR PUMPS ARE FED FROM LP-P1 PANEL.
- 5 EXISTING PA SYSTEM PANEL LOCATED IN OFFICE. PA SYSTEM TO BE REPLACED BY HAMILTON VIDEO & SOUND UNDER CASH ALLOWANCE.

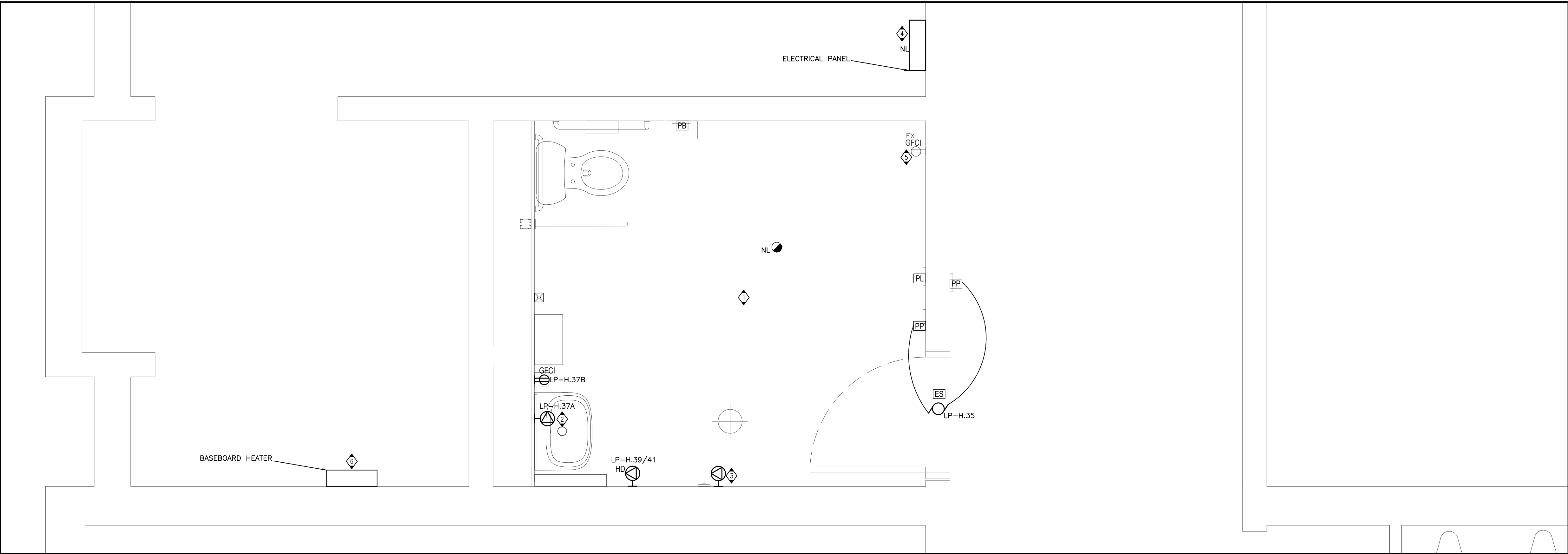
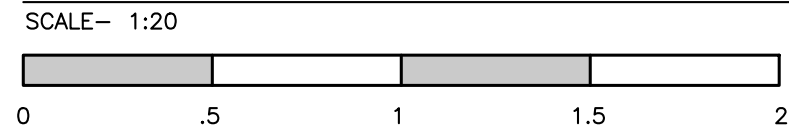
GENERAL NOTES

1. THE ELECTRICAL CONTRACTOR SHALL, AS PART OF HIS WORK, PERFORM ALL RELATED DEMOLITION, MODIFICATIONS, RELOCATION OF ELECTRICAL DISTRIBUTION AND OTHER EQUIPMENT AND RELATED WORK, INCLUDING NEW WORK NECESSARY TO COMPLETE THE PROJECT.
2. THE ELECTRICAL CONTRACTOR SHALL VERIFY ALL FIELD CONDITIONS AND DIMENSIONS PRIOR TO SUBMITTING BIDS. REFER TO EXISTING DRAWINGS AND VISIT THE SITE TO DETERMINE THE EXTENT OF THE DEMOLITION AND NEW WORK REQUIRED.
3. THE ELECTRICAL CONTRACTOR SHALL VERIFY ALL TECHNICAL DETAILS OF EQUIPMENT TO BE REMOVED. WHERE THERE IS A DISCREPANCY WITH THE TENDER DOCUMENTS, CONTRACTOR SHALL ENGAGE CONSULTANTS FOR DIRECTIONS. ELECTRICAL CONTRACTOR SHALL MAKE A LIST OF ALL EQUIPMENT TO BE REMOVED. THIS LIST SHALL BE WITH ALL FOLLOWING INFORMATION:
 - ** MAKE/MODEL
 - ** MANUFACTURER
 - ** TECHNICAL DETAILS
 - ** LOCATION THIS LIST SHALL BE SUBMITTED TO THE OWNER FO RECORD PURPOSES.
4. THE ELECTRICAL CONTRACTOR SHALL NOT DISCONNECT EQUIPMENT AND ELECTRICAL CIRCUITS IN THE RENOVATION AREA OR ANY PART OF THE BUILDING WITHOUT PRIOR NOTIFICATION AND PERMISSION FROM THE OWNER. EXTREME CARE SHALL BE TAKEN TO MINIMIZE DISTURBANCE TO THE SURROUNDING AREA.
5. ITEMS REMOVED AND NOT SCHEDULED TO BE RELOCATED SHALL BE OFFERED TO THE OWNER FOR THEIR USE AND IF NOT ACCEPTED BY THE OWNER, THE ELECTRICAL CONTRACTOR SHALL DISPOSE OF THE MATERIAL FROM THE SITE IN ACCORDANCE WITH LOCAL REGULATIONS. THE ELECTRICAL CONTRACTOR SHALL DELIVER ITEMS ACCEPTED BY THE OWNER TO THE DESIGNATED LOCATIONS AS DIRECTED BY THE OWNER.
6. IN ALL CASES WHERE WORK IS REMOVED, THE ELECTRICAL CONTRACTOR SHALL PROVIDE ALL NECESSARY MATERIALS, EQUIPMENT AND LABOR TO SUSTAIN OPERATION OF ALL PARTS OF THE SYSTEMS CONNECTING TO OR FROM THE PART REMOVED, COMPLETING ALL WORK IN STRICT ACCORDANCE WITH APPLICABLE CODES.
7. ALL WIRING, CABLES AND FEEDERS INCLUDING BOTH CONNECTED TO DEVICES AND EQUIPMENT TO BE DEMOLISHED AND EXISTING THAT WERE ABANDONED IN PLACE SHALL BE REMOVED BACK TO THEIR SOURCES. UNLESS NOTED OTHERWISE, CONDUITS AND/OR WIRING SHALL, WHERE NECESSARY, BE RE-CIRCUIT AROUND THE REMOVED PART, KEEPING OCCUPIED PARTS OF THE BUILDING SYSTEM IN FULL SERVICE.
8. ALL EXISTING CONDUITS WHICH HAVE BEEN ABANDONED OR ARE UNUSED SHALL BE REMOVED.
9. PROVIDE BLANK METAL COVER PLATES FOR ALL JUNCTION/DEVICE BOXES NO LONGER IN USE THAT ARE EMBEDDED IN FLOOR SLAB OR MASONRY WALLS. PROVIDE PLUGS FOR ALL PANELS WHERE CONDUIT HAS BEEN REMOVED. COVER PLATES SHALL BE PAINTED TO MATCH EXISTING CONDITIONS.
10. WHERE REQUIRED COORDINATE WITH THE CONSULTANTS/OWNER FOR EXISTING PARTITIONS TO BE REMOVED TO FACILITATE WORK. DISCONNECT EXISTING BRANCH CIRCUITS SERVING DEVICES IN PARTITIONS TO BE REMOVED. MAINTAIN CONTINUITY OF CIRCUITS SERVING EXISTING DEVICES IN OTHER AREAS TO REMAIN.
11. POWER RECEPTACLES: REMOVE RECEPTACLES. WHEN THE RECEPTACLE TO BE REMOVED IS SERVED BY A CIRCUIT THAT SUPPLIES RECEPTACLES IN OTHER AREAS, THAT ARE TO REMAIN, THE ELECTRICAL CONTRACTOR SHALL MAINTAIN THE CONTINUITY OF THE CIRCUIT TO THE REMAINING RECEPTACLES.
12. FIRE ALARM SYSTEM: COORDINATE AND CONSULT WITH CURRENT F/A SYSTEM SERVICE CONTRACTOR OR THEIR QUALIFIED REPRESENTATIVE FOR ALL FIRE ALARM DEMOLITION AND MODIFICATIONS. OPERATION SHALL BE MAINTAINED OF EXISTING FIRE ALARM SYSTEM SPECIFICALLY AS IT RELATES TO ADJACENT AREAS WHICH ARE NOT INCLUDED IN THE SCOPE OF THIS PROJECT.
13. ELECTRICAL CONTRACTOR SHALL PROVIDE UPDATED TYPE WRITTEN PANEL DIRECTORIES FOR ALL PANELS AFFECTED BY THE DEMOLITION AND/OR NEW WORK. CIRCUIT BREAKERS NOT USED FOR NEW WORK SHALL BE LABELED AS SPARE.
14. FOR EXISTING DEVICES/CIRCUITRY THAT ARE INDICATED TO BE REMOVED BACK TO POINT OF ORIGIN- THESE ITEMS ARE TO BE REMOVED BACK TO POINT OF ORIGIN UNLESS THERE WILL BE EXISTING DEVICES ON THE SAME CIRCUIT THAT ARE LOCATED OUTSIDE AREA OF WORK THAT ARE TO REMAIN. IN THAT CASE, REMOVE THE EXISTING DEVICES/CIRCUITRY IN AREA OF WORK BACK TO THESE EXISTING DEVICES TO REMAIN. ALL DEVICES/CIRCUITRY IN SURROUNDING AREAS THAT ARE TO REMAIN ARE TO BE KEPT ENERGIZED. FOR REMOVAL OF CONDUIT AND WIRING OUTSIDE OF AREA OF WORK COORDINATE AND SCHEDULE WITH OWNER PRIOR TO PERFORMING WORK.

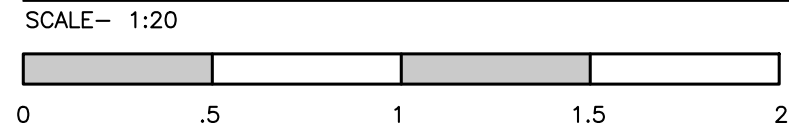
REVISIONS	Description/Date						<p>EXP Services Inc. 1: 905.525.6069 f: 905.528.7310 1266 South Service Road, Suite C11-1, Stoney Creek, ON, L8E 5R9 Canada</p> <p>www.exp.com</p> <ul style="list-style-type: none">• BUILDINGS • EARTH & ENVIRONMENT • ENERGY •• INDUSTRIAL • INFRASTRUCTURE • SUSTAINABILITY •	<p>Project Title: KILBRIDE PUBLIC SCHOOL 6611 PANTON STREET KILBRIDE, ONTARIO</p> <p>Drawing Title: PARTIAL FLOOR PLAN - BOILER ROOM - MECHANICAL DEMOLITION PLAN</p>	<p>Drawn: AC</p> <p>Date: FEBRUARY, 2025</p>	<p>Scale: AS NOTED</p> <p>Project Number: ALL-25001986-A0</p>
	1	ISSUED FOR REVIEW 2025/02/28							<p>Checked: JP</p> <p>Date: FEBRUARY, 2025</p>	<p>This Set Contains Drawings</p> <p>Drawing Number: E1.1</p> <p>Revision</p>
	2	ISSUED FOR TENDER READY SET 2025/03/31								
	3	ISSUED FOR PERMIT AND TENDER 2025/04/17								
	4	ISSUED FOR PERMIT AND TENDER 2025/12/01								



PARTIAL FLOOR PLAN – BARRIER FREE WASHROOM – LIGHTING – PROPOSED PLAN



PARTIAL FLOOR PLAN – BARRIER FREE WASHROOM – POWER & SYSTEMS – PROPOSED PLAN



DRAWING NOTES

- 1 PROVIDE ADDITIONAL CONDUIT/WIRING AS REQUIRED TO TIE NEW LIGHTING FIXTURE INTO LOCAL LIGHTING CIRCUIT.
- 2 PROVIDE LINE VOLTAGE OCCUPANCY SENSOR AS SHOWN. PROVIDE CONDUIT/WIRING AS REQUIRED.

GENERAL NOTES



- A. PRIOR TO BIDDING, ELECTRICAL CONTRACTOR SHALL VISIT SITE AND BE FAMILIAR WITH ALL EXISTING CONDITIONS INCLUDING BUT NOT LIMITED TO EQUIPMENT LOCATIONS AND OTHER POSSIBLE INSTALLATION DIFFICULTIES. PAY AND OBTAIN ANY PERMITS REQUIRED INCLUDING ESA.
- B. ALL CONDUIT ROUTES SHOWN ON DRAWINGS ARE APPROXIMATE AND NOT FINAL. CONTRACTOR SHALL VERIFY ROUTES AND DO A WALKTHROUGH BEFORE BID. CONTRACTOR SHALL ACCOUNT FOR POSSIBLE DAMAGE AND REPAIR TO EXISTING CEILING AND LIGHT FIXTURES. ALL MAIN CONDUIT RUNS SHALL BE IN CORRIDOR CEILING SPACE.
- C. EXTEND/PROVIDE NEW WIRING/CONDUIT FOR ALL DEVICES THAT ARE RELOCATED.
- D. REMOVE AND RE-INSTALL ALL REQUIRED T-BAR OR DRY TYPE CEILINGS TO FACILITATE ELECTRICAL INSTALLATIONS. ANY DAMAGES TO T-BAR SHALL BE RE-INSTATED.
- E. UNLESS OTHERWISE NOTED WITH A CIRCUIT NUMBER, RE-USE EXISTING CIRCUIT BREAKERS THAT HAD BECOME SPARE FROM THE DEMOLITION TO FEED NEW RECEPTACLES. MAXIMUM 6 DUPLEX RECEPTACLES PER CIRCUIT UNLESS OTHERWISE NOTED.
- F. CONTRACTOR SHALL ACCOUNT FOR POSSIBLE DAMAGE AND REPAIR TO CEILING TILES FOR CONDUIT RUNS FROM PANELS TO NEW ELECTRICAL DEVICES.
- G. CIRCUIT NUMBERS SHOWN ON THIS PLAN ARE FOR CIRCUITING PURPOSE ONLY. REUSE EXISTING SPARE BREAKERS OR EXISTING BREAKERS MADE SPARE FROM DEMOLITION AND/OR REPLACE OBSOLETE BREAKERS WITH NEW ADD OR ADD NEW BREAKERS IN AVAILABLE SPACES IN EXISTING ELECTRICAL PANELS AS REQUIRED OR REPLACE EXISTING PANELS WITH NEW AS INDICATED. CONFIRM EXISTING CONDITIONS ON SITE.

DRAWING NOTES

- 1 REFER TO TYPICAL BARRIER FREE WASHROOM MOTOR OPERATED DOOR CONTROL SCHEMATIC ON E4.0.
- 2 MECHANICAL CONTRACTOR SHALL SUPPLY 10 MINUTE TIMER TO CONTROL SOLENOID VALVE FOR FAUCETS. WIRE TIMER TO ROOM LIGHTING CIRCUIT SUCH THAT TIMER IS ENERGIZED WHEN LIGHTS ARE ENERGIZED.
- 3 RE-USE THE EXISTING CIRCUIT TO FEED THE NEW BASEBOARD HEATER. PROVIDE ADDITIONAL CONDUIT/WIRING AS REQUIRED.
- 4 INSTALL EXISTING PANEL FEEDING THE NEW BASEBOARD HEATER IN THE BARRIER FREE WASHROOM IN REVISED LOCATION AS SHOWN. PROVIDE NEW WIRING AND ADDITIONAL CONDUIT AS REQUIRED TO REWORK FEEDER AND BRANCH CIRCUITS.
- 5 EXISTING RECEPTACLE TO REMAIN DEDICATED FOR ADULT CHANGE TABLE (FUTURE).
- 6 EXISTING BASEBOARD HEATER. REWIRED FROM RELOCATED PANEL.

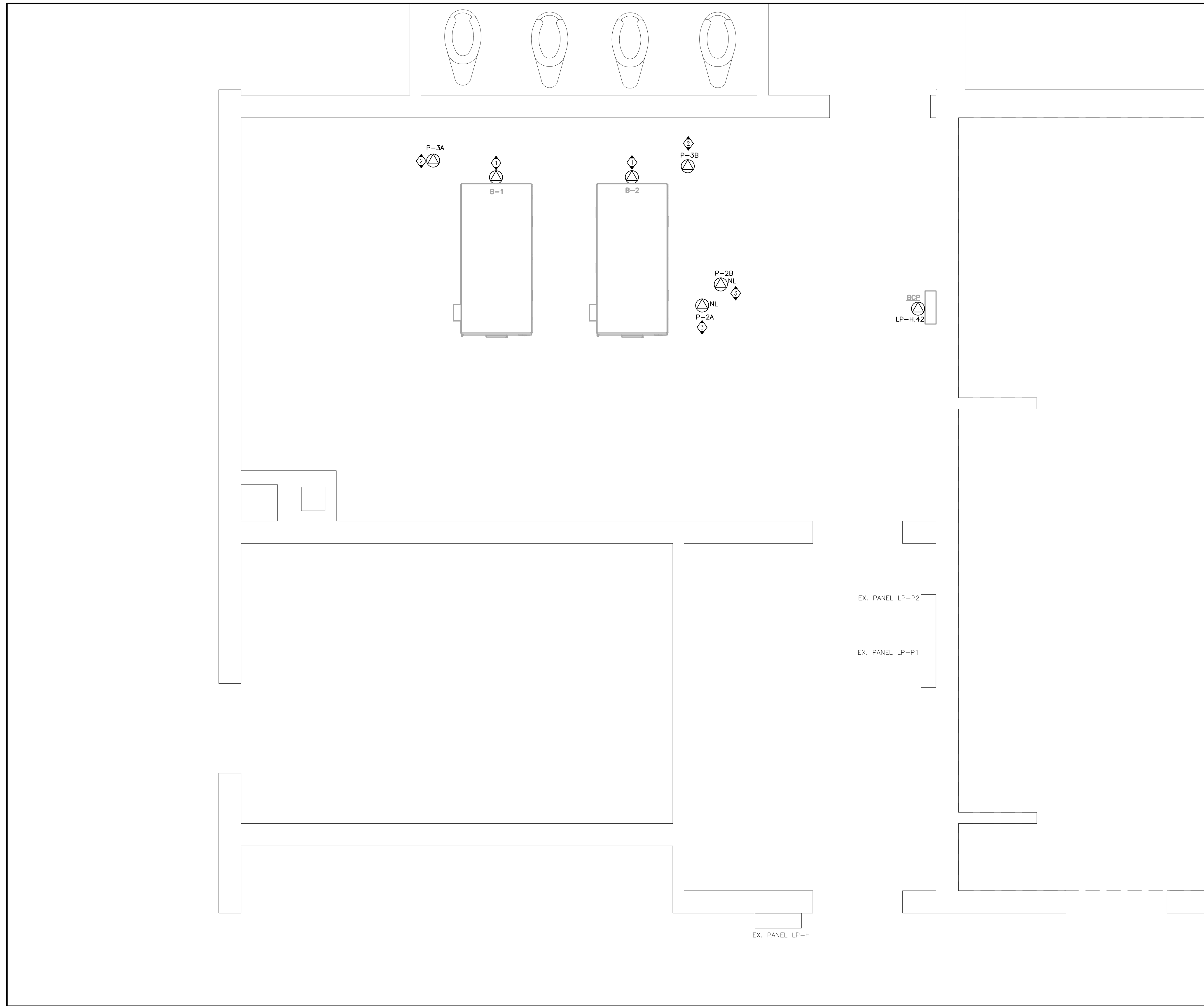
GENERAL NOTES

- A. PRIOR TO BIDDING, ELECTRICAL CONTRACTOR SHALL VISIT SITE AND BE FAMILIAR WITH ALL EXISTING CONDITIONS INCLUDING BUT NOT LIMITED TO EQUIPMENT LOCATIONS AND OTHER POSSIBLE INSTALLATION DIFFICULTIES. PAY AND OBTAIN ANY PERMITS REQUIRED INCLUDING ESA.
- B. ALL CONDUIT ROUTES SHOWN ON DRAWINGS ARE APPROXIMATE AND NOT FINAL. CONTRACTOR SHALL VERIFY ROUTES AND DO A WALKTHROUGH BEFORE BID. CONTRACTOR SHALL ACCOUNT FOR POSSIBLE DAMAGE AND REPAIR TO EXISTING CEILING AND LIGHT FIXTURES. ALL MAIN CONDUIT RUNS SHALL BE IN CORRIDOR CEILING SPACE.
- C. EXTEND/PROVIDE NEW WIRING/CONDUIT FOR ALL DEVICES THAT ARE RELOCATED.
- D. ALL NEW RECEPTACLES IN THE SCHOOL SHALL BE TAMPER RESISTANT TYPE.
- E. CONTRACTOR SHALL ACCOUNT FOR POSSIBLE DAMAGE AND REPAIR TO CEILING TILES FOR CONDUIT RUNS FROM PANELS TO NEW ELECTRICAL DEVICES.
- F. CIRCUIT NUMBERS SHOWN ON THIS PLAN ARE FOR CIRCUITING PURPOSE ONLY. REUSE EXISTING SPARE BREAKERS OR EXISTING BREAKERS MADE SPARE FROM DEMOLITION AND/OR REPLACE OBSOLETE BREAKERS WITH NEW ADD OR ADD NEW BREAKERS IN AVAILABLE SPACES IN EXISTING ELECTRICAL PANELS AS REQUIRED OR REPLACE EXISTING PANELS WITH NEW AS INDICATED. CONFIRM EXISTING CONDITIONS ON SITE.

REVISIONS	Description/Date				TRUE NORTH		NORTH PROJECT				<div>Project Title: KILBRIDE PUBLIC SCHOOL 6611 PANTON STREET KILBRIDE, ONTARIO</div> <div>Drawing Title: PARTIAL FLOOR PLAN - BARRIER FREE WASHROOM - NEW PLANS</div>		Drawn: AC		Scale: AS NOTED	
	Date:		FEBRUARY, 2025		Project Number: ALL-25001986-A0											
	No.				Checked: JP		This Set Contains									
					Date:		Drawing Number:									
					Date:		Revision									
1	ISSUED FOR REVIEW 2025/02/28															
2	ISSUED FOR TENDER READY SET 2025/03/31															
3	ISSUED FOR PERMIT AND TENDER 2025/04/17															
4	ISSUED FOR PERMIT AND TENDER 2025/12/01															

DRAWING NOTES

- 1 USE THE EXISTING CIRCUIT TO FEED THE NEW BOILERS. PROVIDE ADDITIONAL CONDUIT/WIRING AS REQUIRED.
- 2 USE THE EXISTING CIRCUIT TO FEED THE NEW BOILERS CIRCULATOR PUMPS. PROVIDE ADDITIONAL CONDUIT/WIRING AS REQUIRED.
- 3 PROVIDE ADDITIONAL CONDUIT/WIRING AS REQUIRED TO REWORK BRANCH CIRCUIT FOR EXISTING PUMP AS SHOWN.



PARTIAL FLOOR PLAN – BOILER ROOM – POWER & SYSTEMS – PROPOSED PLAN

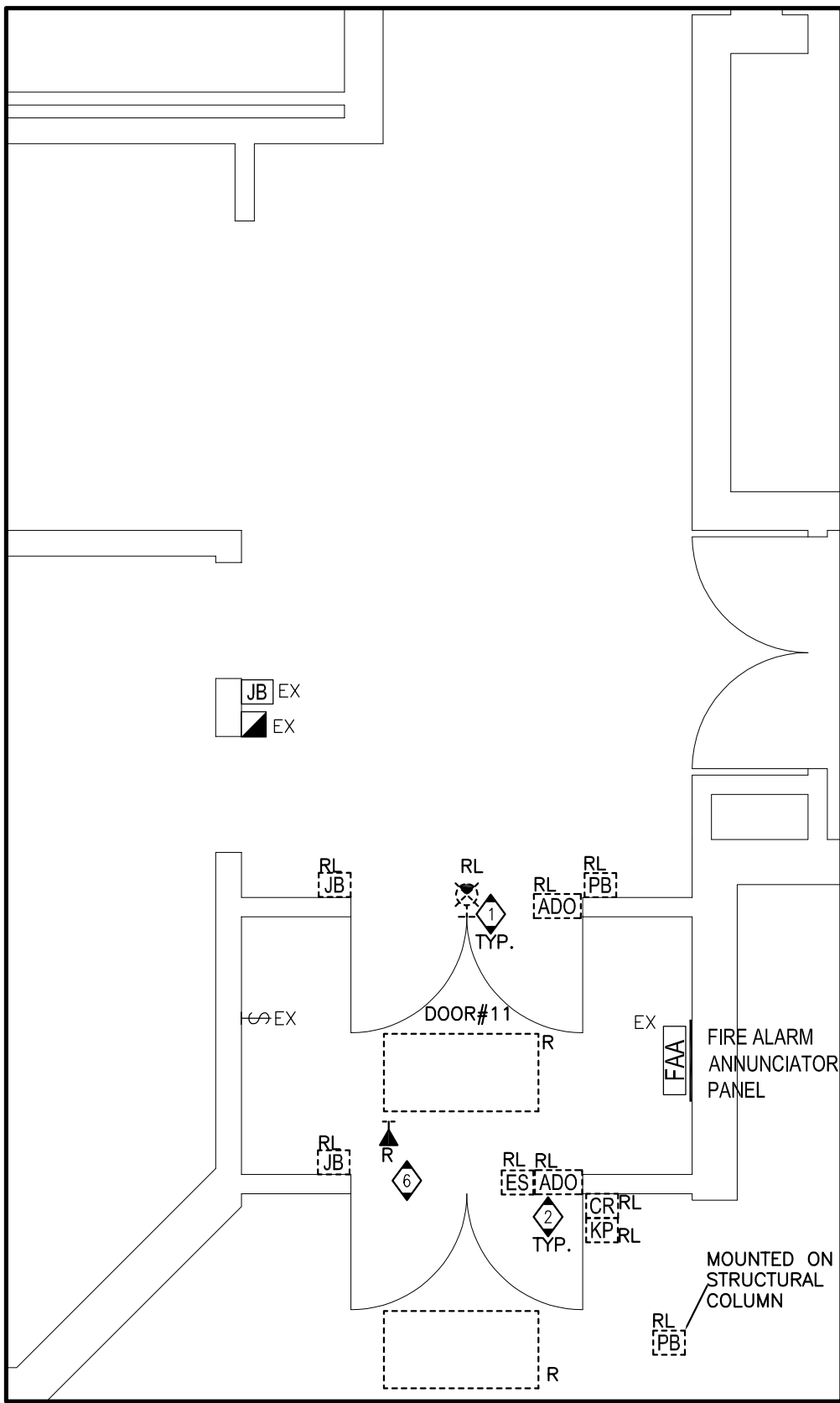
SCALE— 1:20

0 .5 1 1.5 2

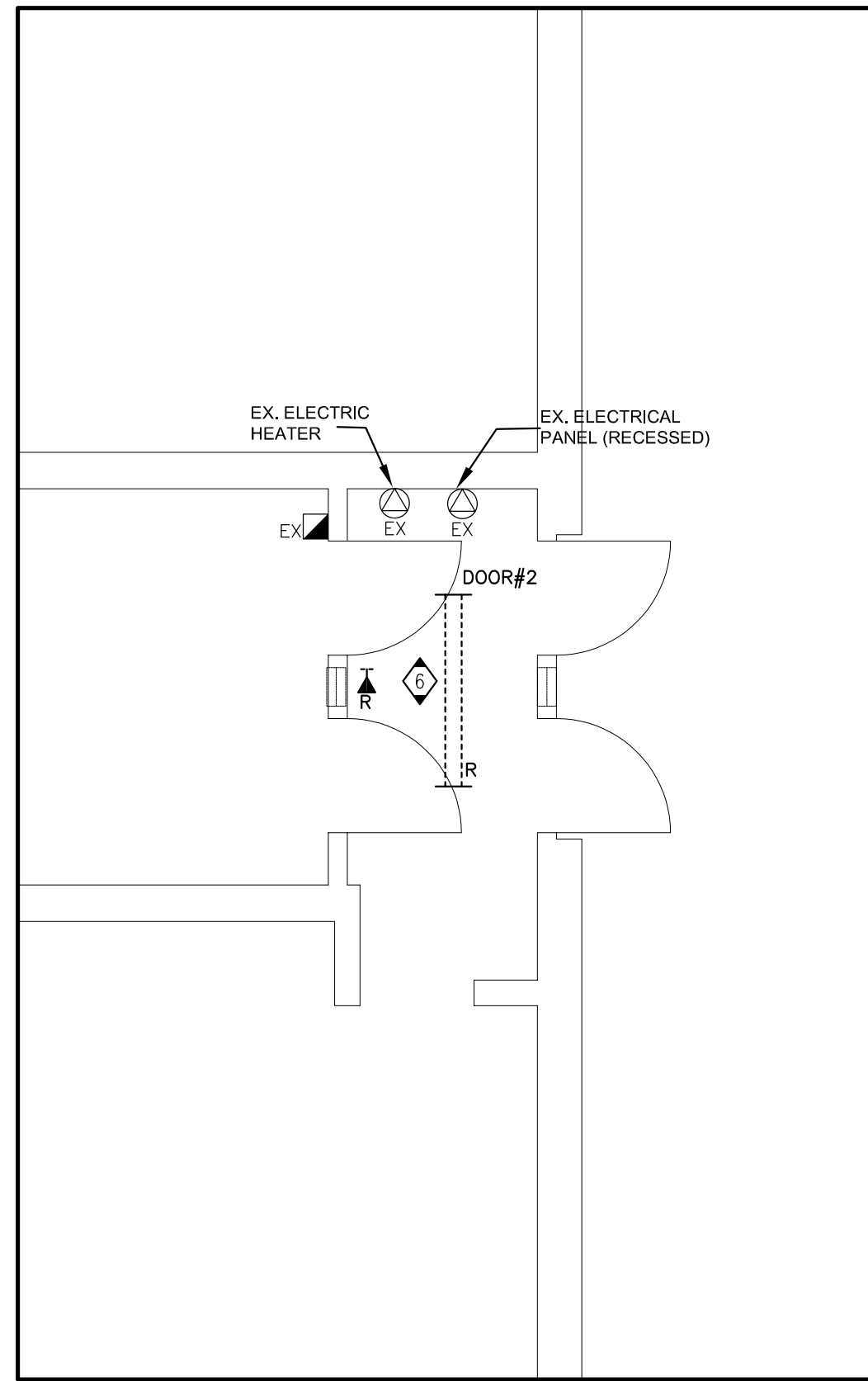
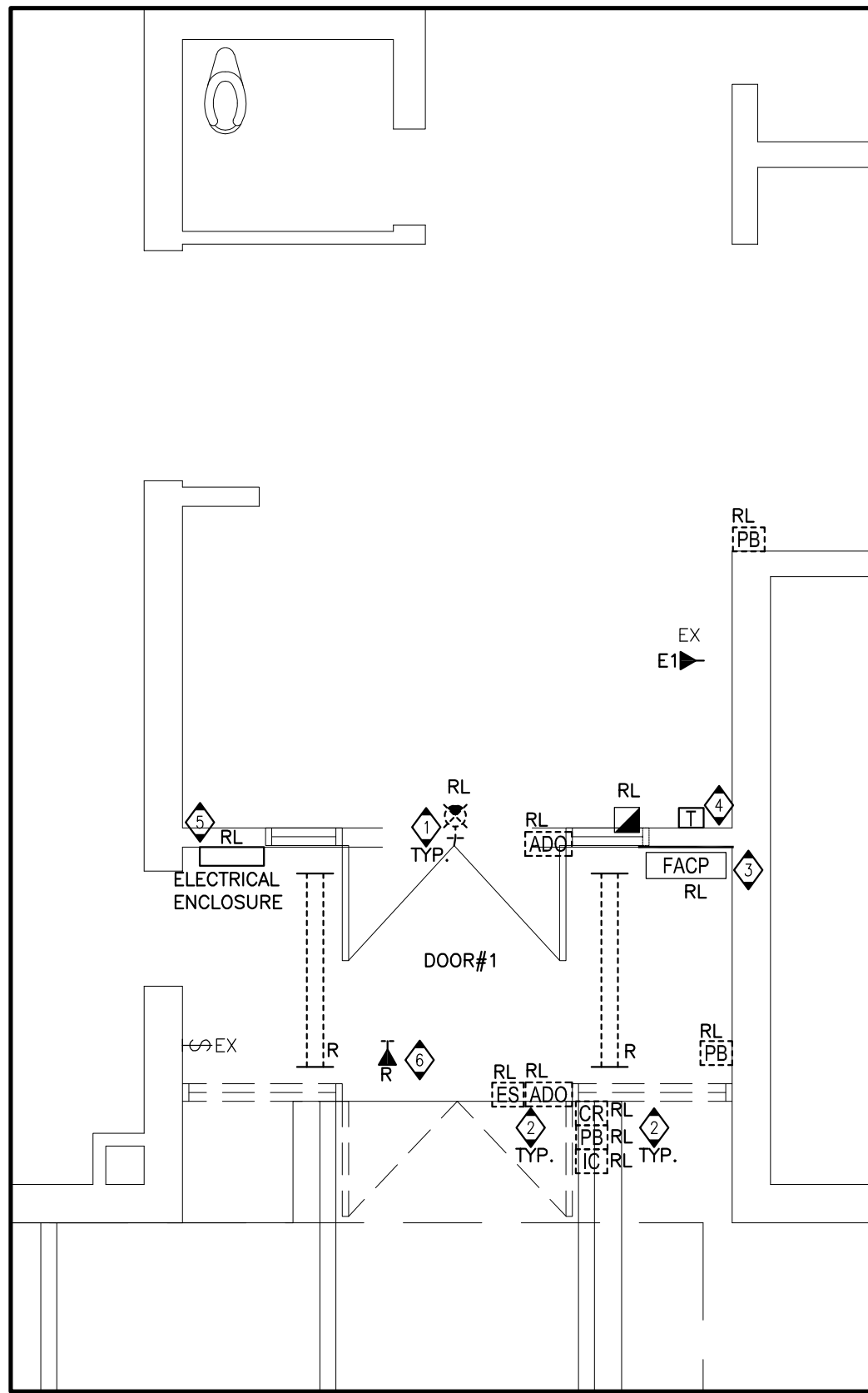
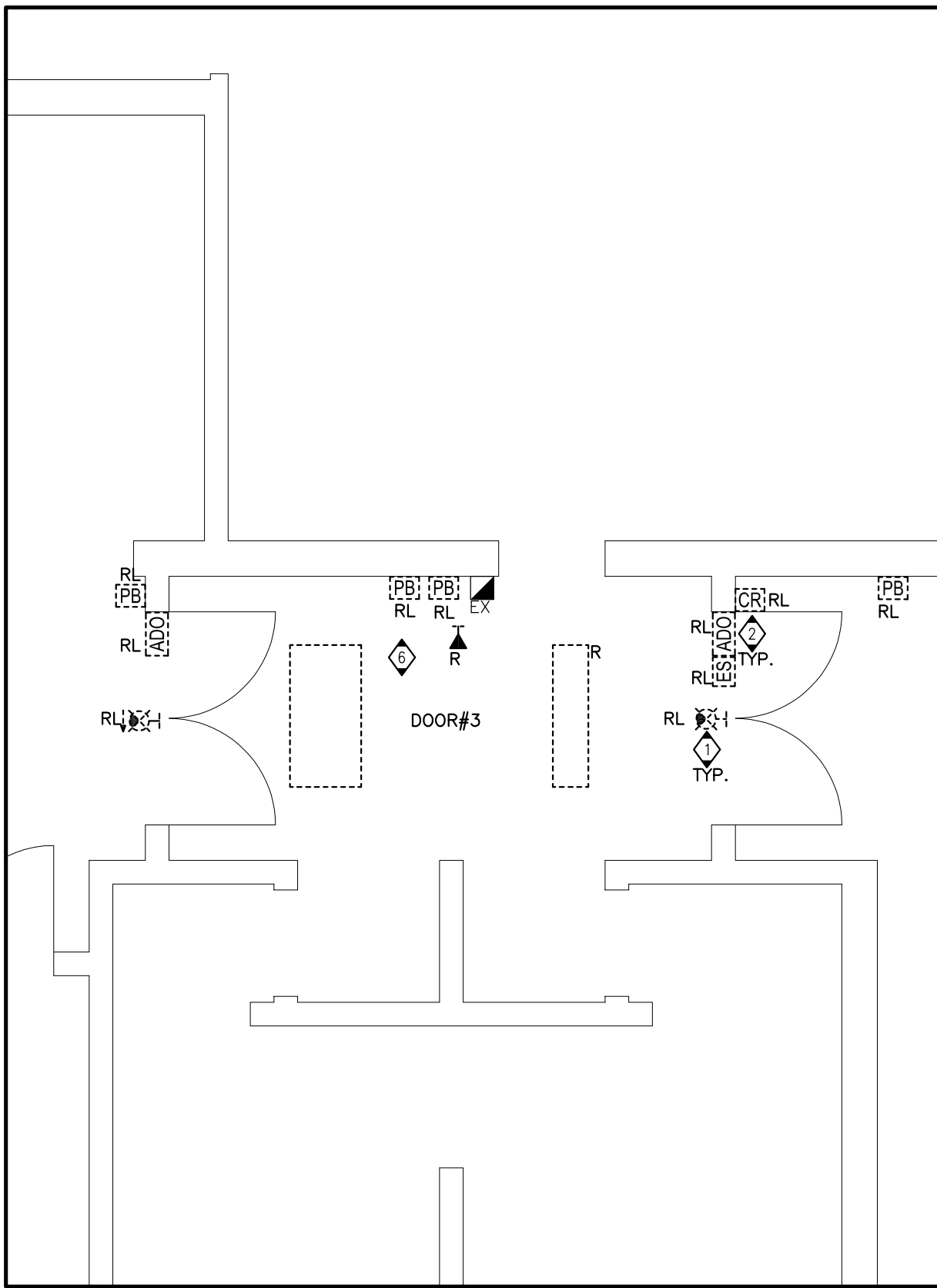
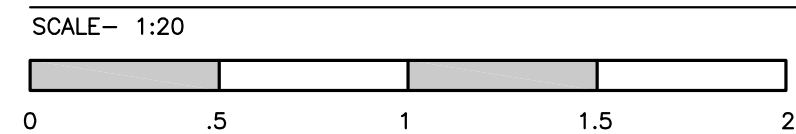
GENERAL NOTES

- B. PRIOR TO BIDDING, ELECTRICAL CONTRACTOR SHALL VISIT SITE AND BE FAMILIAR WITH ALL EXISTING CONDITIONS INCLUDING BUT NOT LIMITED TO EQUIPMENT LOCATIONS AND OTHER POSSIBLE INSTALLATION DIFFICULTIES.
 C. PAY ATTENTION TO ANY PERMITS REQUIRED INCLUDING EASES.
 D. ALL CONDUIT ROUTES SHOWN ON DRAWINGS ARE APPROXIMATE AND NOT FINAL. CONTRACTOR SHALL VERIFY ROUTES AND GO TO WALKTHROUGH BEFORE BID. CONTRACTOR SHALL ACCOUNT FOR POSSIBLE DAMAGE AND REPAIR TO EXISTING CEILING AND LIGHT FIXTURES. ALL MAIN CONDUIT RUNS SHALL BE IN CORRIDOR CEILING SPACE.
 E. CONTRACTOR PROVIDE NEW WIRING/CONDUIT FOR ALL DEVICES THAT ARE RELOCATED.
 F. ALL NEW RECEPTACLES IN THE SCHOOL SHALL BE TAMPER RESISTANT TYPE. CONTRACTOR SHALL ACCOUNT FOR POSSIBLE DAMAGE AND REPAIR TO CEILING SPACE FOR CONDUIT RUNS FROM PANELS TO NEW ELECTRICAL DEVICES.
 G. CIRCUIT NUMBERS SHOWN ON THIS PLAN ARE FOR CIRCUITING PURPOSE ONLY. REUSE EXISTING SPACE BREAKERS OR EXISTING BREAKERS MADE SPARE FROM DEMOLITION AND/OR REPLACE OBSOLETE BREAKERS WITH NEW. ADD OR ADD NEW BREAKERS IN AVAILABLE SPACES IN EXISTING ELECTRICAL PANELS. CONTRACTOR TO REUSE EXISTING OR NEW CIRCUIT BREAKERS AS INDICATED. CONFIRM EXISTING CONDITIONS ON SITE.

REVISIONS	Description/Date														 Seal	<div>EXP Services Inc. t: 905.525.6069 f: 905.528.7310 1266 South Service Road, Suite C11-1, Stony Creek, ON, L8E 5R9 Canada www.exp.com • BUILDINGS • EARTH & ENVIRONMENT • ENERGY • • INDUSTRIAL • INFRASTRUCTURE • SUSTAINABILITY •</div>	Project Title: KILBRIDE PUBLIC SCHOOL		Drawn:	Scale:	
	No.																AC		AS NOTED		
	1	ISSUED FOR REVIEW 2025/02/28											Date:	FEBRUARY, 2025			Project Number: ALL-25001986-A0				
	2	ISSUED FOR TENDER READY SET 2025/03/31																			
	3	ISSUED FOR PERMIT AND TENDER 2025/04/17																			
	4	ISSUED FOR PERMIT AND TENDER 2025/12/01																			
															Drawing Title: PARTIAL FLOOR PLAN - BOILER ROOM - MECHANICAL NEW PLAN		Checked: JP Date: FEBRUARY, 2025	<div>This Set Contains</div> <div>Drawings:<div>E2.1</div><div>Revision</div></div>			



VESTIBULES – DEMOLITION PLAN

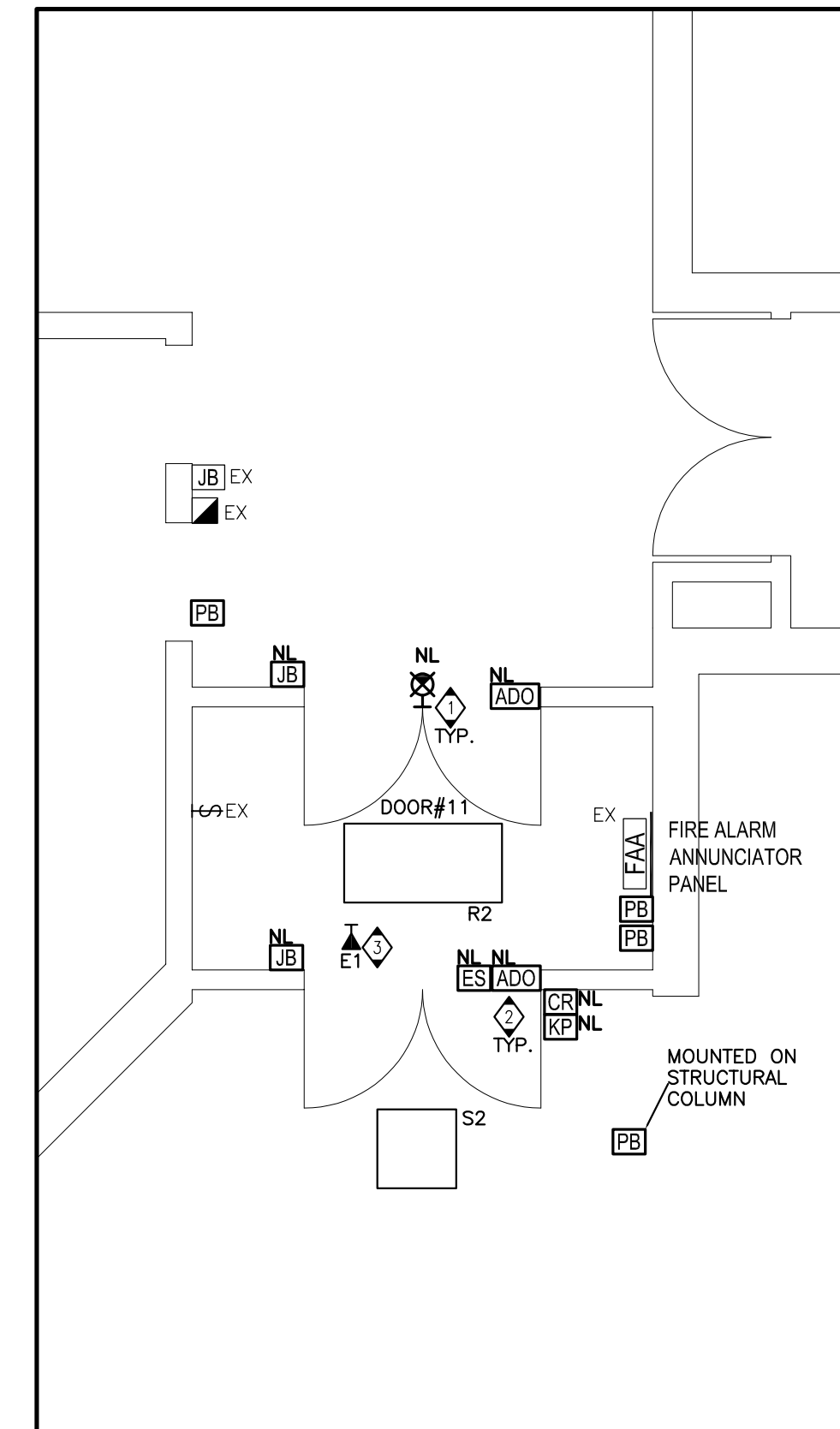


DRAWING NOTES

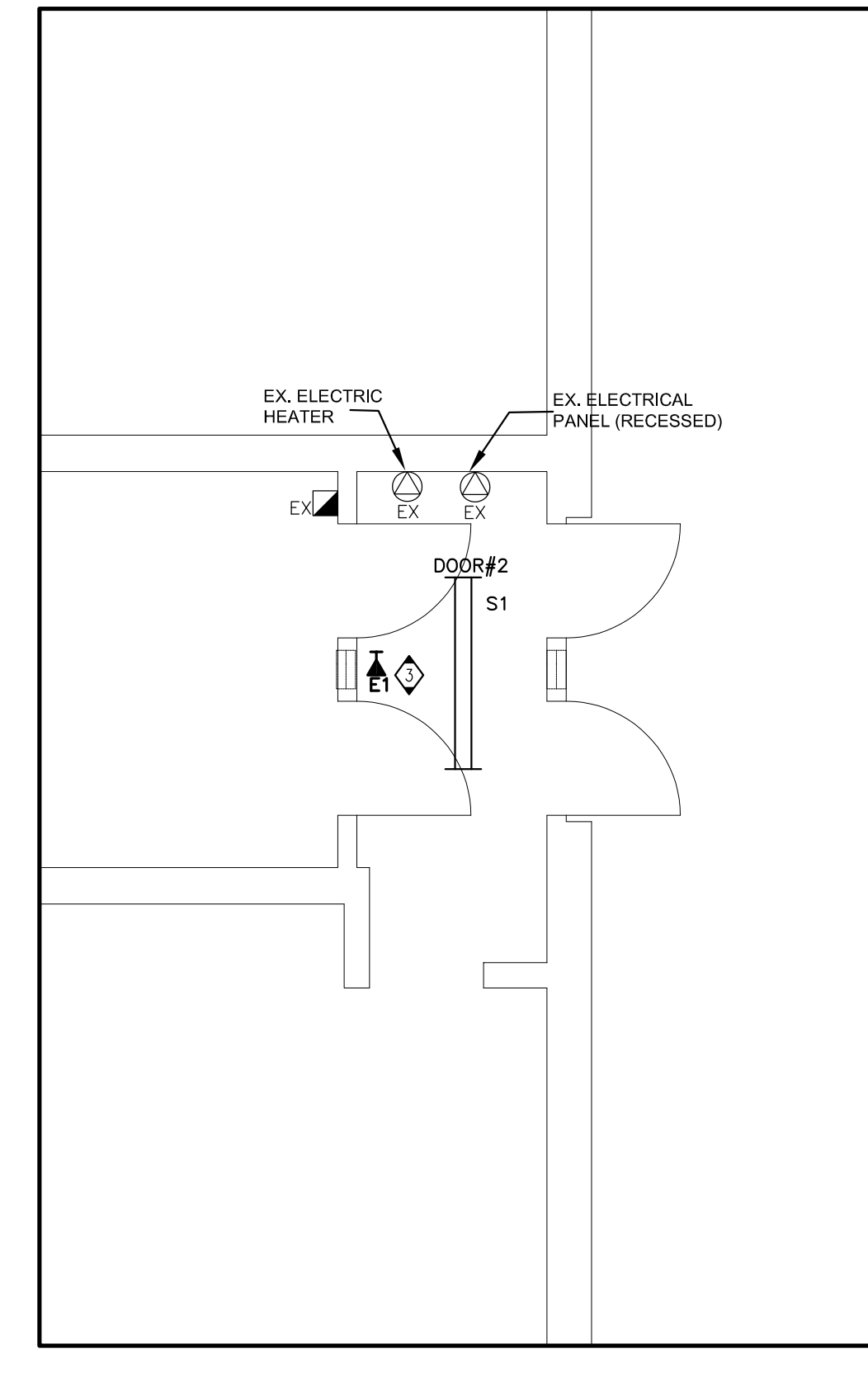
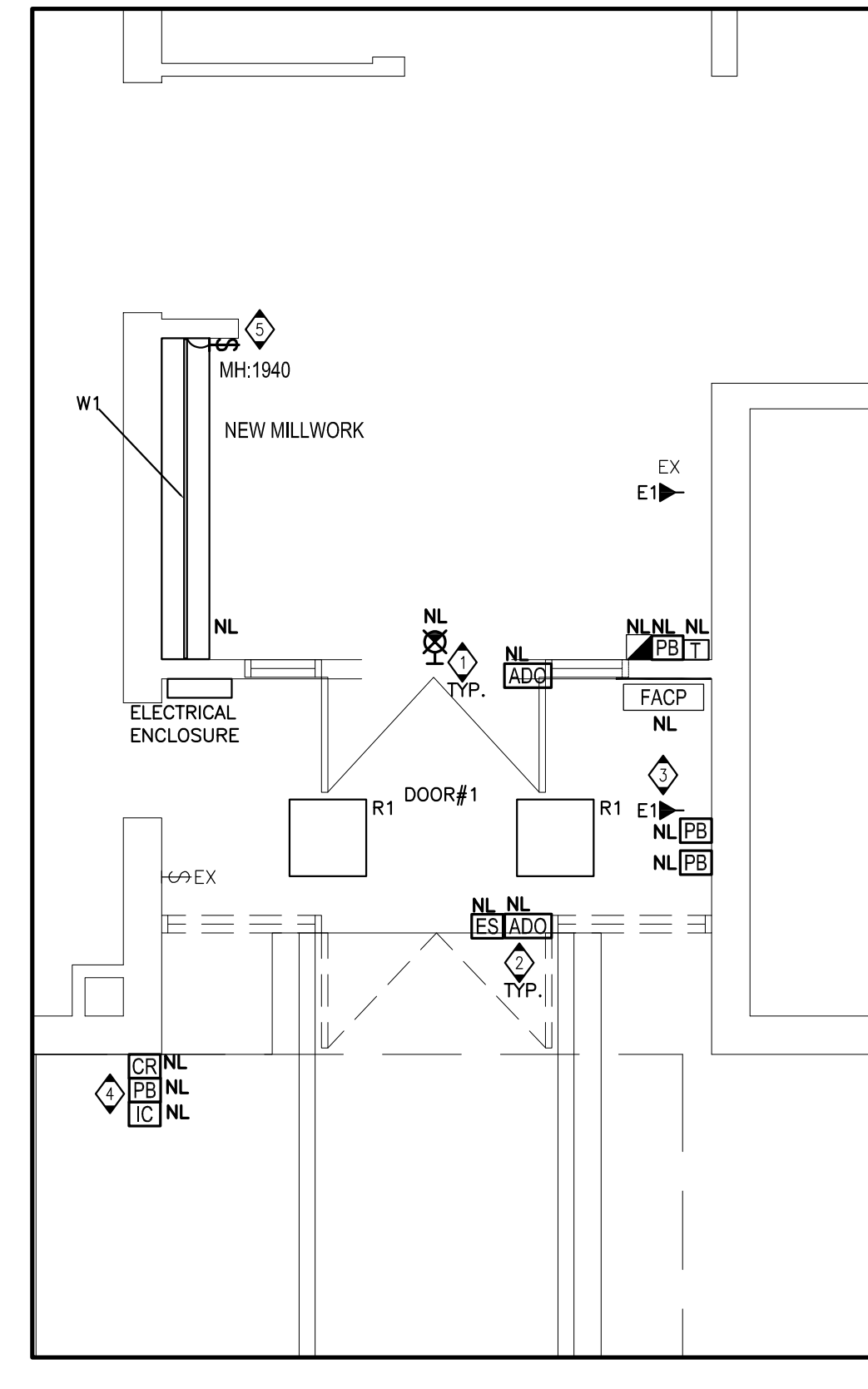
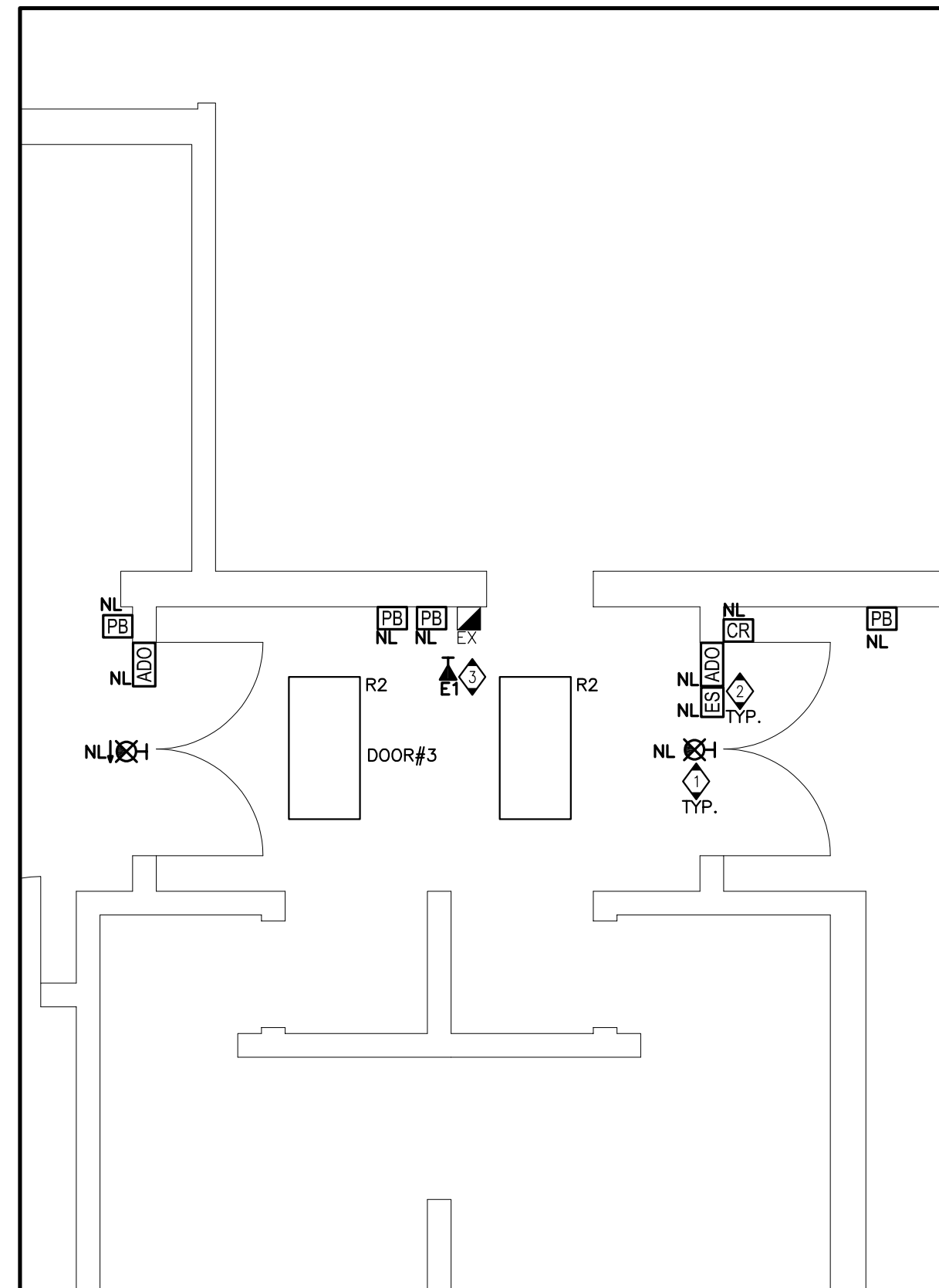
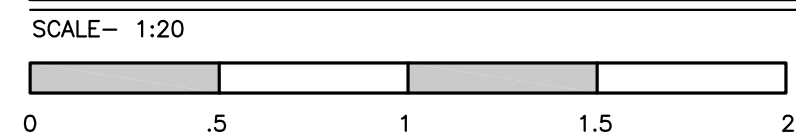
- 1 DISCONNECT AND REMOVE EXISTING EXIT SIGN. STORE THE DEVICE SAFE FOR REINSTALLATION. PROTECT THE EXISTING CIRCUIT.
- 2 DISCONNECT AND REMOVE EXISTING DOOR HARDWARE DEVICES. STORE THE DEVICE SAFE FOR REINSTALLATION. PROTECT THE EXISTING CONDUIT/WIRING.
- 3 FIRE ALARM PANEL TO BE DISCONNECT AND RELOCATED IN THE VESTIBULE. MIRCOM FX-2000. PROTECT CONDUCTORS AND MAINTAINS FUNCTIONALITY THROUGHOUT CONSTRUCTION.
- 4 THERMOSTAT RELOCATION BY MECHANICAL TRADE.
- 5 ELECTRICAL-COMMUNICATION PANEL ENCLOSURE TO BE RELOCATED IN THE VESTIBULE. DETAILS TO BE PROVIDED.
- 6 TURN EXISTING FIXTURE OVER TO THE OWNER.

GENERAL NOTES

ELECTRICAL CONTRACTOR IS TO REMOVE DEVICE BOXES AND CONDUIT AS REQUIRED FOR LOW VOLTAGE SYSTEMS (ACCESS CONTROL/DOOR OPERATORS, INTERCOMPA SYSTEM), AND INCLUDE THIS WORK IN THE TENDER BID. HAMILTON VIDEO AND SOUND WILL DISCONNECT DEVICES AND REMOVE WIRING FOR THESE SYSTEMS. UNDER CASH ALLOWANCE.



VESTIBULES – PROPOSED PLAN



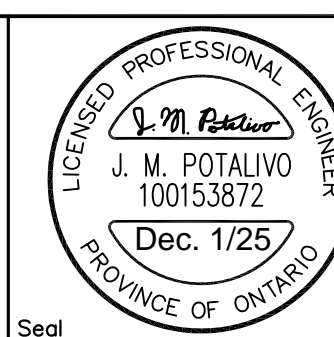
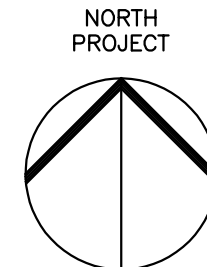
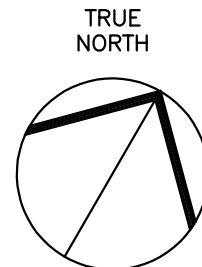
DRAWING NOTES

- 1 RE-INSTALL EXISTING EXIT SIGN. PROVIDE ADDITIONAL CONDUIT/WIRING IF REQUIRED.
- 2 RE-INSTALL EXISTING DOOR HARDWARE DEVICES. PROVIDE ADDITIONAL CONDUIT IF REQUIRED.
- 3 CONTRACTOR TO VERIFY THE VOLTAGE OF EMERGENCY REMOTE HEAD ON SITE PRIOR TO INSTALLATION. TERMINATE TO NEAREST EMERGENCY CIRCUIT DEVICE WHERE NEW.
- 4 RE-INSTALL EXISTING DOOR HARDWARE DEVICES IN NEW LOCATION ON WALL, WITH SIMILAR ARRANGEMENT AS EXISTING (PUSH BUTTON LOCATED 1100mm ABOVE GRADE. EXACT LOCATION AND HEIGHTS TO BE COORDINATED WITH ARCHITECT PRIOR TO INSTALLATION). PROVIDE ADDITIONAL CONDUIT AS REQUIRED.
- 5 PROVIDE RECESSED LIGHTING FIXTURE C/W WIRING DEVICE. CONDUIT/WIRING AND ALL ASSOCIATED ELECTRICAL CONNECTIONS FOR NEW MILLWORK. CONNECT FIXTURE TO THE CLOSEST EXISTING LIGHTING CIRCUIT. COORDINATE AND CONFIRM WITH TRADE FOR DETAILS. SEE DETAIL ON DRAWING E4.0 (FOR REFERENCE ONLY) AND THE LIGHTING FIXTURE SCHEDULE ON DRAWING E0.0.

GENERAL NOTES

ELECTRICAL CONTRACTOR IS TO PROVIDE DEVICE BOXES AND CONDUIT AS REQUIRED FOR LOW VOLTAGE SYSTEMS (ACCESS CONTROL/DOOR OPERATORS, INTERCOMPA SYSTEM), AND INCLUDE THIS WORK IN THE TENDER BID. HAMILTON VIDEO AND SOUND WILL INSTALL WIRING. TERMINATE AND TEST THESE SYSTEMS. UNDER CASH ALLOWANCE.

REVISIONS	Description/Date	
	No.	
	1	ISSUED FOR REVIEW 2025/02/28
	2	ISSUED FOR TENDER READY SET 2025/03/31
	3	ISSUED FOR PERMIT AND TENDER 2025/04/17
	4	ISSUED FOR PERMIT AND TENDER 2025/12/01



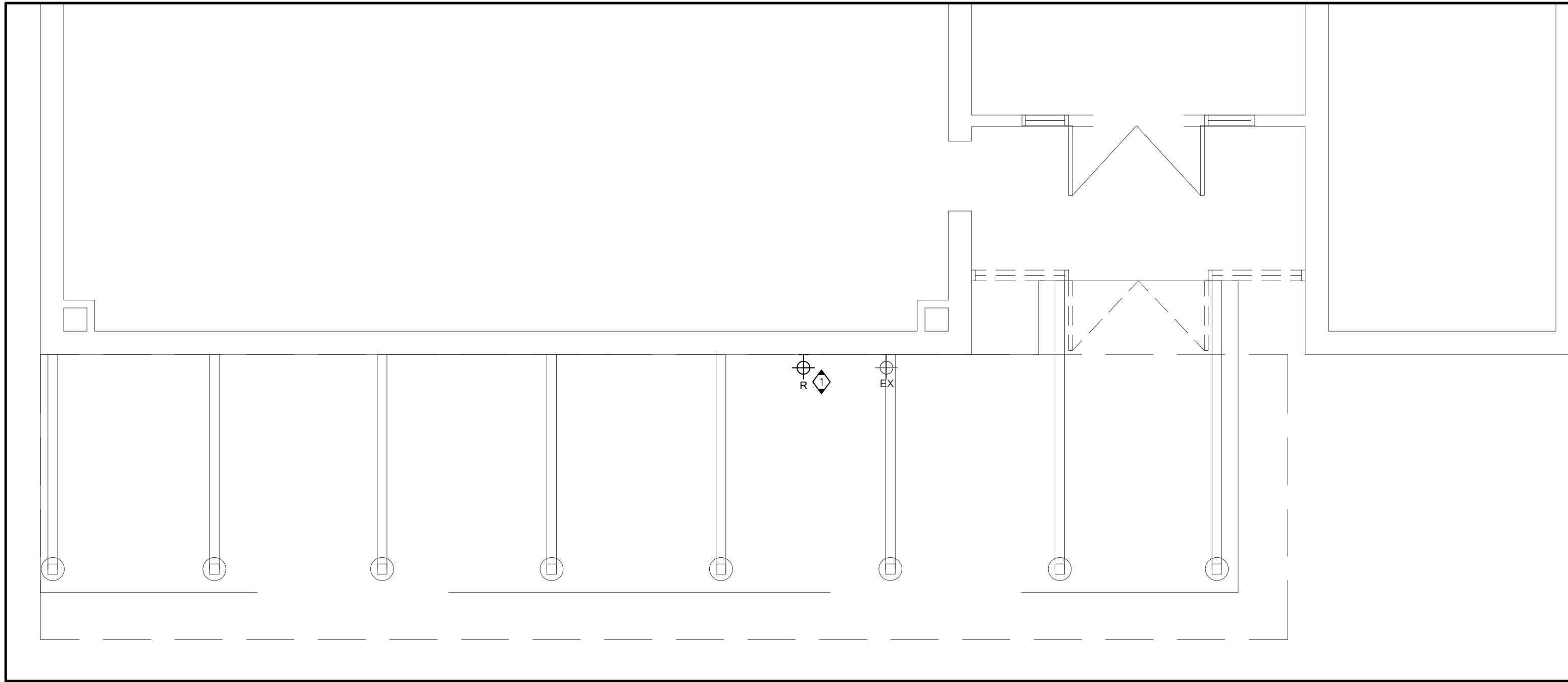
EXP Services Inc.
t: 905.525.6069 | f: 905.528.7310
1266 South Service Road,
Suite C1-1, Stoney Creek,
ON, L8E 5R9
Canada
www.exp.com



Project Title:
KILBRIDE PUBLIC SCHOOL
6611 PANTON STREET
KILBRIDE, ONTARIO
Drawing Title:
ENTRANCE - LIGHTING, POWER & SYSTEMS
DEMOLITION & PROPOSED PLANS

Drawn: AC
Date: FEBRUARY, 2025
Checked: JP
Date: FEBRUARY, 2025

Scale: AS NOTED
Project Number: ALL-25001986-A0
Drawing Number: **E3.0**
Revision

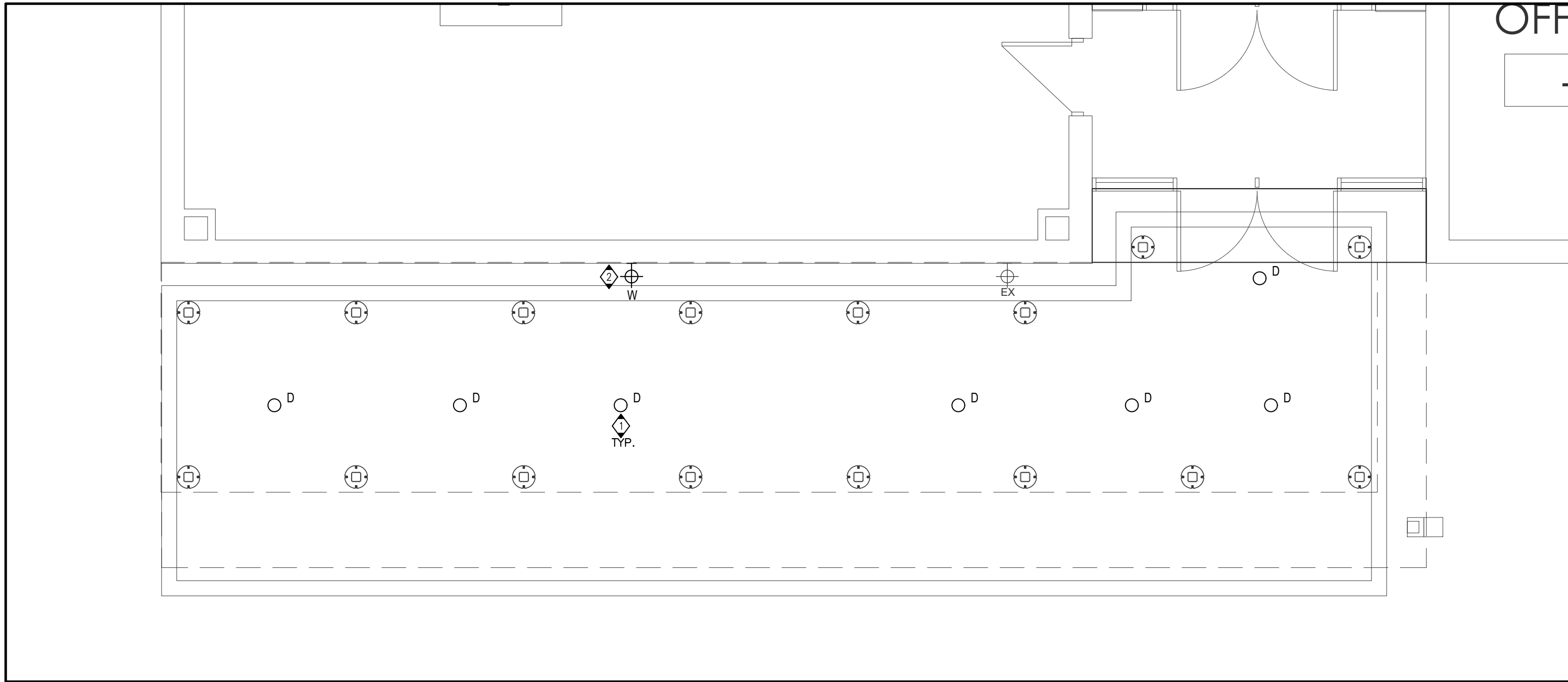


PARTIAL FLOOR PLAN – CANOPY – DEMOLITION LIGHTING PLAN
SCALE- 1:50

DRAWING NOTES

1 DISCONNECT AND REMOVE WALL MOUNT FIXTURE. RETAIN THE EXISTING CIRCUIT FOR INSTALLATION OF NEW FIXTURE.

GENERAL NOTES

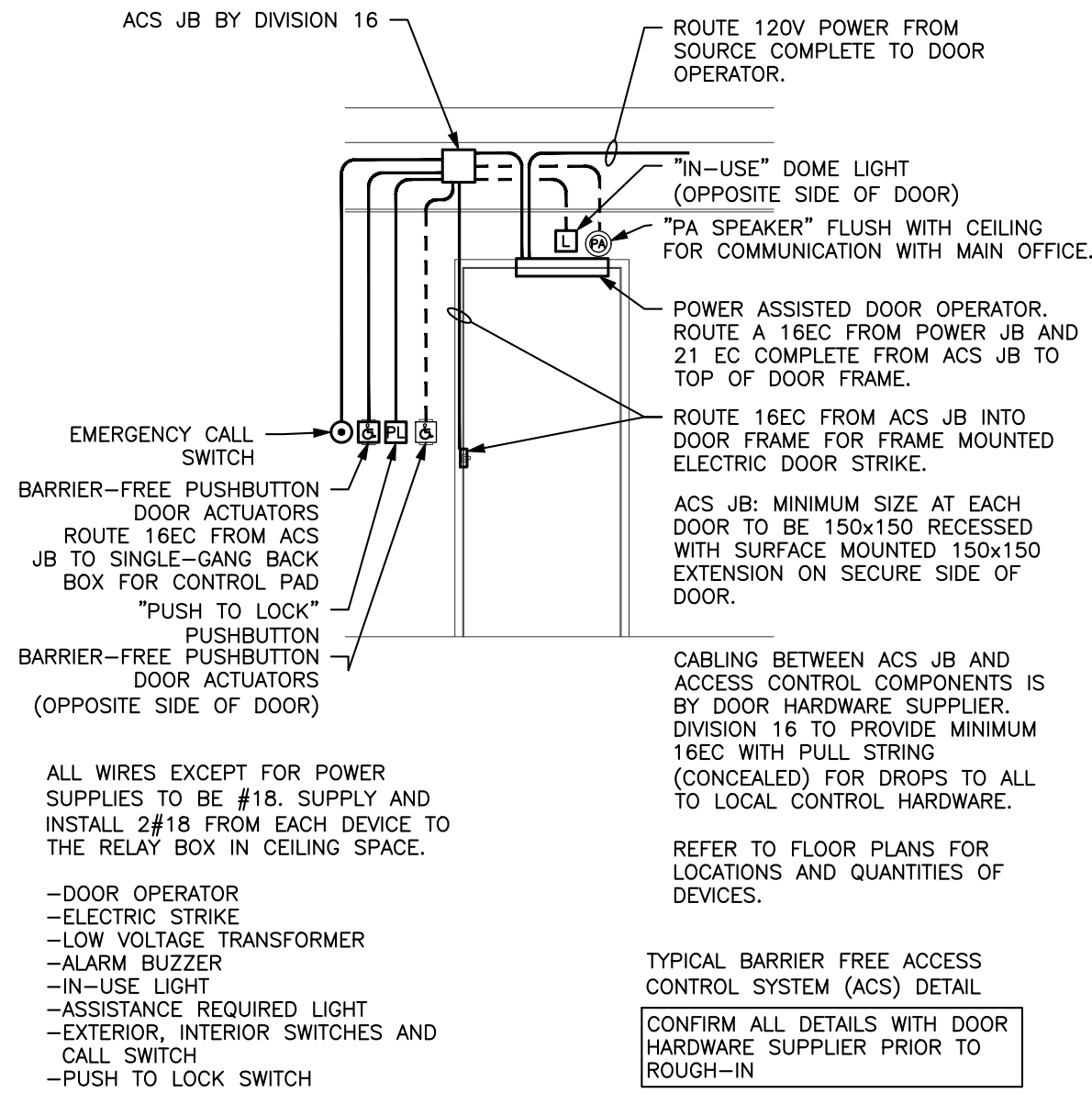


PARTIAL FLOOR PLAN – CANOPY – PROPOSED LIGHTING PLAN
SCALE- 1:50

DRAWING NOTES

- 1 CONNECT THE NEW LIGHT FIXTURES TO THE EXISTING WALL PACK CIRCUITS AND TIE INTO EXISTING EXTERIOR LIGHTING CONTROLS.
- 2 INSTALL NEW WALL MOUNT FIXTURE AS SHOWN. PROVIDE ADDITIONAL CONDUIT/WIRING AS REQUIRED TO CONNECT IT TO THE EXISTING WALL PACK CIRCUIT.

GENERAL NOTES



TYPICAL BARRIER FREE WASHROOM MOTOR OPERATED DOOR CONTROL SCHEMATIC
SCALE N.T.S.

PANEL SCHEDULE

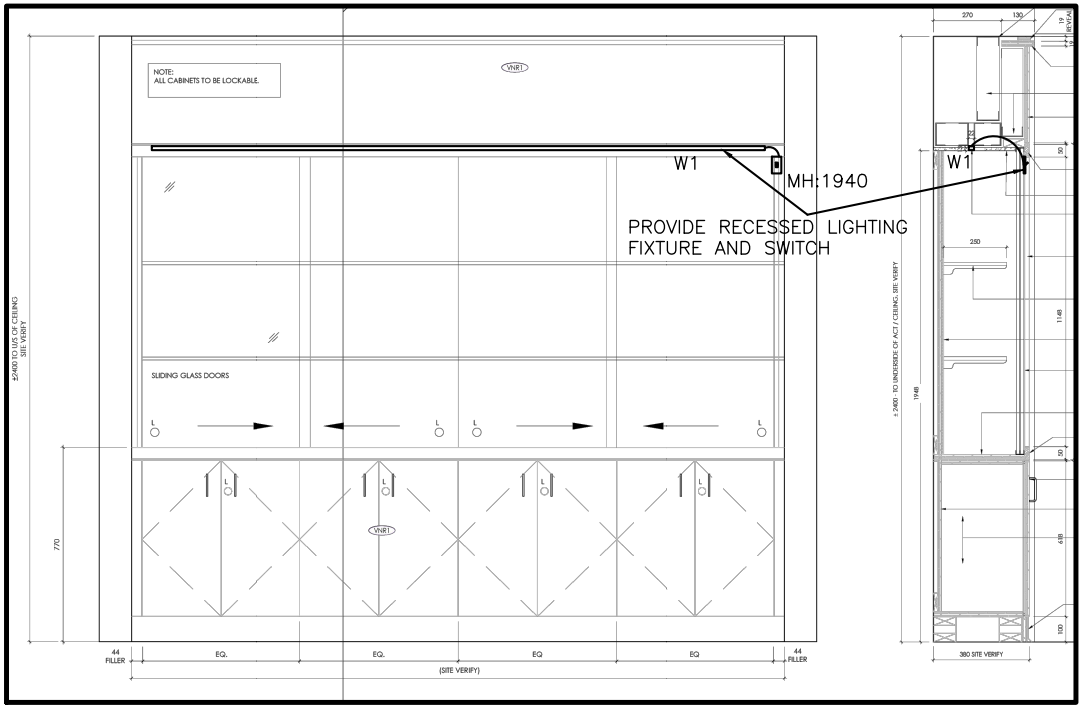
PANEL NAME: LP-H MOUNTING: SURFACE PANEL LOCATION: CORRIDOR MAINS: 100A 120/208V 3Ø 4W BUSSING: COPPER OTHER:					42 CIRCUIT PANELBOARD ENCLOSURE: TYPE-1 (SPRINKLER PROOF) SCCR=14KA		
LOAD DESCRIPTION		VA	BRKR	15A	BRKR	VA	LOAD DESCRIPTION
EXISTING LOAD		—	1	15A	15A	2	EXISTING LOAD
EXISTING LOAD		—	3	15A	15A	4	EXISTING LOAD
EXISTING LOAD		—	5	15A	15A	6	EXISTING LOAD
EXISTING LOAD		—	7	15A	15A	8	EXISTING LOAD
EXISTING LOAD		—	9	15A	15A	10	EXISTING LOAD
EXISTING LOAD		—	11	15A	15A	12	EXISTING LOAD
EXISTING LOAD		—	13	15A	15A	14	EXISTING LOAD
EXISTING LOAD		—	15	15A	15A	16	EXISTING LOAD
EXISTING LOAD		—	17	15A	15A	18	EXISTING LOAD
EXISTING LOAD		—	19	15A	15A	20	EXISTING LOAD
EXISTING LOAD		—	21	15A	15A	22	EXISTING LOAD
EXISTING LOAD		—	23	15A	15A	24	EXISTING LOAD
EXISTING LOAD		—	25	15A	15A	26	EXISTING LOAD
EXISTING LOAD		—	27	15A	15A	28	EXISTING LOAD
EXISTING LOAD		—	29	15A	15A	30	EXISTING LOAD
EXISTING LOAD		—	31	15A	15A	32	EXISTING LOAD
EXISTING LOAD		—	33	15A	15A	34	EXISTING LOAD
B.F. WASHROOM ADO		600VA	35	15A	20A	36	EXISTING LOAD
B.F. WR FAUCETS		50VA	37A	15A	50A	38	EXISTING LOAD
B.F. WR RECEPT.		180VA	37B	15A	15A	40	100VA B.F. WR. EMR. CALL KIT
B.F. WASHROOM HAND DRYER		1000VA	39	15A	15A	42	100VA BOILER CONTROL PANEL
CONNECTED LOAD (L.H.)		—	41	15A	—	—	CONNECTED LOAD (R.H.)

SPD— SURGE PROTECTIVE DEVICE
ELECTRICAL CONTRACTOR TO DETERMINE EXACT BREAKER SIZE

* PROVIDE GFCI BREAKER

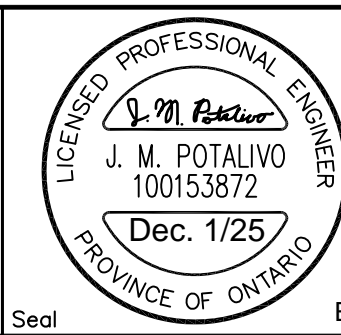
SPD- SURGE PROTECTIVE DEVICE
ELECTRICAL CONTRACTOR TO DETERMINE EXACT BREAKER SIZE

* PROVIDE GFCI BREAKER



MILLWORK DISPLAY CASE WITH LIGHTING FIXTURE INSTALLED
SCALE N.T.S.

REVISIONS	No.	Description/Date
	1	ISSUED FOR REVIEW 2025/02/28
	2	ISSUED FOR TENDER READY SET 2025/03/31
	3	ISSUED FOR PERMIT AND TENDER 2025/04/17
	4	ISSUED FOR PERMIT AND TENDER 2025/12/01



EXP Services Inc.
1: 905.525.6069 | F: 905.528.7310
1266 South Service Road,
Suite C1-1, Stoney Creek,
ON, L8E 5R9
Canada
www.exp.com

• BUILDINGS • EARTH & ENVIRONMENT • ENERGY •
• INDUSTRIAL • INFRASTRUCTURE • SUSTAINABILITY •



Project Title: KILBRIDE PUBLIC SCHOOL 6611 PANTON STREET KILBRIDE, ONTARIO	Drawn: AC Date: FEBRUARY, 2025	Scale: AS NOTED Project Number: ALL-25001986-A0
Drawing Title: CANOPY LIGHTING PLAN & DETAILS	Checked: JP Date: FEBRUARY, 2025	This Set Contains E4.0 Drawings Revision