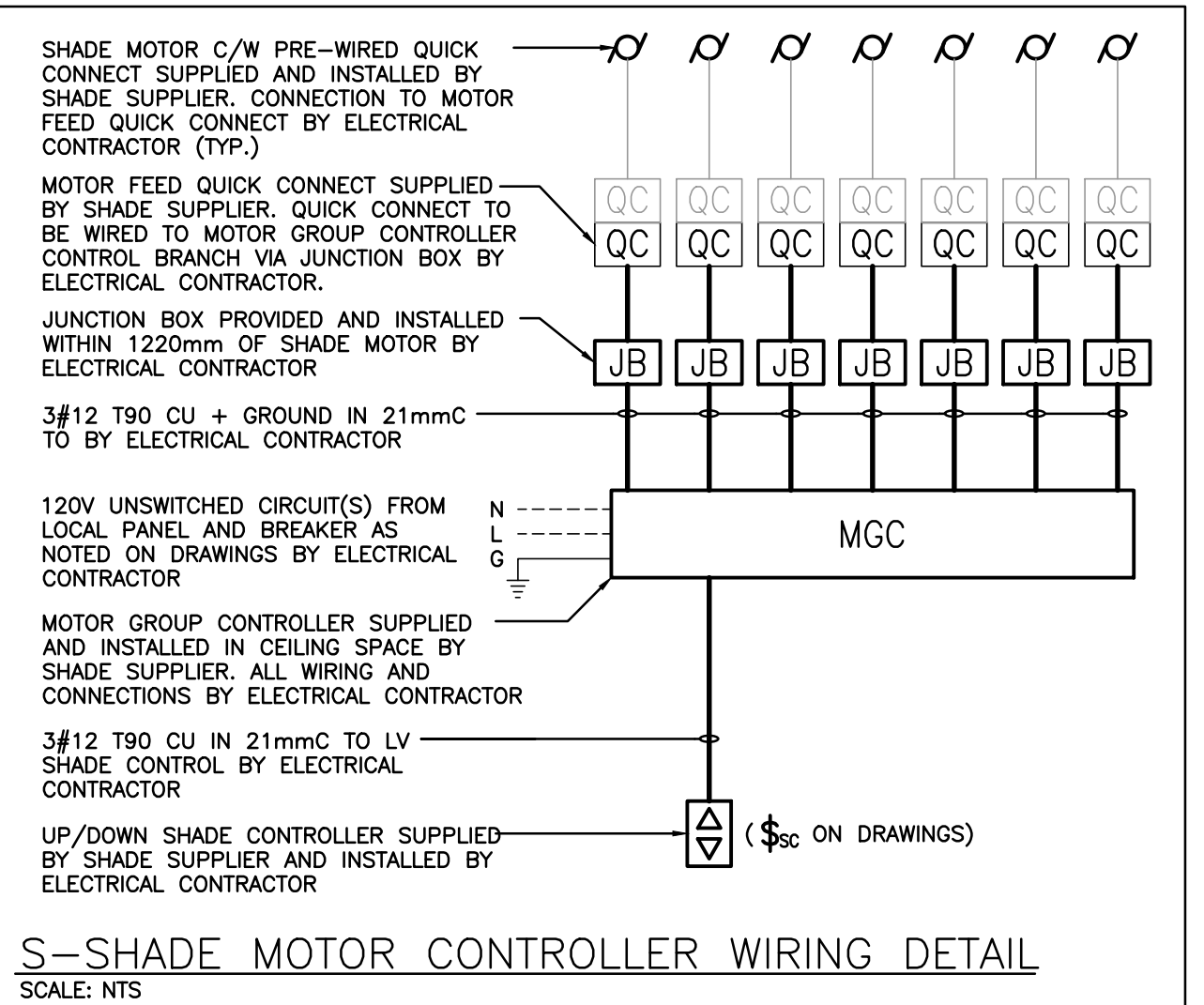


LIGHTING CONTROL SYSTEMS SEQUENCE OF OPERATION				
Space Type	Room Names	Control Sequence / Control Device(s)	Control System	DETAIL REFERENCE
GYMNASIUM	GYMNASIUM 138	Sequence: LZ-2: AUTOMATIC ON/AUTOMATIC OFF THROUGH OCCUPANCY SENSOR/MANUAL OFF THROUGH WALL SWITCH/POD. LZ-1 AND LZ-3: MANUAL ON THROUGH WALL SWITCH/POD /AUTOMATIC OFF THROUGH OCCUPANCY SENSOR/MANUAL OFF THROUGH WALL SWITCH/POD.	DIGITAL OCCUPANCY CONTROL SYSTEM	L 1750
WASHROOMS/CHANGEROOMS	TYPICAL	Sequence: AUTOMATIC ON/AUTOMATIC OFF THROUGH OCCUPANCY SENSOR/MANUAL OFF THROUGH WALL POD/STATION AS INDICATED ON DRAWINGS. OCCUPANCY SENSOR/MANUAL OFF THROUGH WALL SWITCH/POD.	DIGITAL OCCUPANCY CONTROL SYSTEM	L 1750

**NOTES:**  
1. ALL INDICATED TIMES SHALL BE COORDINATED WITH SCHOOL BOARD REPRESENTATIVE. REPORT ANY DISCREPANCIES BETWEEN SEQUENCE AND CONTROL DEVICES TO ENGINEER PRIOR TO PROGRAMMING. COORDINATE PROGRAMMING OF ANY SPACES NOT LISTED WITH BOARD REPRESENTATIVE (EXCLUDING SERVICE ROOMS).  
2. REFER TO SPECIFICATIONS FOR FURTHER INFORMATION REGARDING COMMISSIONING AND 3RD PARTY FUNCTIONAL TESTING OF LIGHTING CONTROL SYSTEMS.

HEATER SCHEDULE		FOR INFORMATION REGARDING EQUAL MANUFACTURERS REFER TO SPECIFICATION	
Item	Manufacturer/Catalog Number		
A	1500 WATT 208 VOLT SINGLE PHASE RECESSED MTD. FAN FORCED HEATER C/W BUILT-IN THERMOSTAT AND 24V RELAY WITH TRANSFORMER AND STANDARD FACTORY FINISH TO SUIT ARCHITECT.		
B	5000 WATT 208 VOLT SINGLE PHASE SUSPENDED UNIT HEATER C/W BUILT-IN THERMOSTAT AND 24V RELAY WITH TRANSFORMER AND STANDARD FACTORY FINISH TO SUIT ARCHITECT.		
C	1000 WATT 208 VOLT SINGLE PHASE BASEBOARD HEATER C/W BUILT-IN THERMOSTAT AND 24V RELAY WITH TRANSFORMER AND STANDARD FACTORY FINISH TO SUIT ARCHITECT.		



Item	Manufacturer/Catalog Number	Voltage	Lamp	Mounting	Description
P	COOPER CAT. #JULON-SANC-730-U-SMC-4R-BPC DYNA POLE CAT. SRK5-17	120V	160W 22684 LUMENS LED ARRAY 3000K BULB RATING: B1-U0-03	POLE	POLE MOUNTED DECORATIVE FIXTURE C/W CAST ALUMINUM HOUSING, STANDARD TYPE SMO DISTRIBUTION, BUTTON TYPE PHOTO CONTROL, TOOLLESS ENTRY TO HINGED LENS ASSEMBLY AND 17" (4.5m) STRAIGHT 4" SQUARE POLE C/W BASE COVER. ENTIRE ASSEMBLY SHALL HAVE CUSTOM FINISH TO BE CHOSEN BY ARCHITECT
W	COOPER CAT. #IST-SAI-D-730-U-TAFT-XX-BPC	120V	45.2W 5712 LUMENS LED ARRAY 3000K BULB RATING: B1-U0-02	WALL	COMPLETE CUT OFF LED WALLPACK FIXTURE C/W TYPE TAFT DISTRIBUTION, FULL CUT-OFF DARK SKY COMPLIANT, 800MA DRIVER, BUTTON TYPE PHOTO CONTROL AND FINISH TO SUIT ARCHITECT. MOUNT FIXTURE AT 13' AND 12' ABOVE FINISHED GRADE AS NOTED. REFER TO ARCHITECTURAL ELEVATIONS.
W1	COOPER CAT. #IST-SAI-E-730-U-TAFT-XX-BPC	120V	58.2W 7149 LUMENS LED ARRAY 3000K BULB RATING: B1-U0-02	WALL	COMPLETE CUT OFF LED WALLPACK FIXTURE C/W TYPE TAFT DISTRIBUTION, FULL CUT-OFF DARK SKY COMPLIANT, 800MA DRIVER, BUTTON TYPE PHOTO CONTROL AND FINISH TO SUIT ARCHITECT. MOUNT FIXTURE AT 13' ABOVE FINISHED GRADE AS NOTED. REFER TO ARCHITECTURAL ELEVATIONS.
V	LITHONIA CAT. #LDNG-30/25-L06-AR-LSS-MVOLT	120V	28.3W 2504 LUMENS LED ARRAY 3000K	RECESSED	6" (150mm) ROUND LED CANOPY DOWNLIGHT FIXTURE C/W FINISH TO SUIT ARCHITECT. NOTE: FIXTURE MUST BE WET LOCATION LISTED.

**NOTES:**  
1. IF THERE ARE ANY DISCREPANCIES BETWEEN THE FIXTURE PART NUMBER AND DESCRIPTION, IT IS THE RESPONSIBILITY OF THIS CONTRACTOR TO BRING THIS TO THE ELECTRICAL CONSULTANT'S ATTENTION PRIOR TO SHOP DRAWING SUBMITTAL.  
2. REFER TO SPECIFICATION FOR ALTERNATE EQUALS.  
3. WHERE NOTED ABOVE THAT FIXTURES ARE TO HAVE FINISH TO SUIT ARCHITECT THE FINISH WILL BE SELECTED FROM MANUFACTURER'S OPTIONAL COLOUR CHART (i.e. RAL COLOURS OR EQUAL). PROVIDE THIS COLOUR CHART WITH SHOP DRAWING SUBMITTAL.  
4. LED LUMEN VALUES QUOTED FOR FIXTURES ARE TO BE CONSIDERED MINIMUM, AND AS ABSOLUTE OR DELIVERED LUMENS, LUMEN VALUES SHOULD NOT EXCEED MORE THAN 10% OF SPECIFIED OUTPUT.

Item	Manufacturer/Catalog Number	Voltage	Lamp	Mounting	CR	Listings	Description
A	COOPER CAT. #HX-03-LW-UM-03S-03-U-AC-03W-SET-U LITHONIA CAT. #JSS-LB-A33 MOLT 40R B08R H28 W12	120V	LED 4000 LUMENS 4000K 32.2W	SUSPENDED	80	N/A	4" (122mm) SUSPENDED LED STRIP LIGHT C/W 36" CHAIN HANGER, WIDE LENSED OPTICAL DISTRIBUTION, 10% 0-10V DIMMING DRIVER, AND SWITCHABLE LUMENS. LIGHT FIXTURE SETTING IS TO BE SET AT "4000K" AND "MEDIUM" LUMEN
B	COOPER CAT. #14CITS-NAY LITHONIA CAT. #CPX 1X4 ALD7 B0CR SWW7 5ML MOLT	120V	LED 2450 LUMENS 4000K 18.4W	RECESSED	80	N/A	1'x4" (305mmx122mm) LED BACKLIT FLAT PANEL FIXTURE C/W FIELD SELECTABLE LUMENS AND COLOUR TEMPERATURE, WHITE Frosted LENS, 10% 0-10V DIMMING DRIVER, AND WHITE FINISH. LIGHT FIXTURE SETTING IS TO BE SET AT "4000K" AND "MEDIUM" LUMEN
B1	COOPER CAT. #14CITS-NAY LITHONIA CAT. #CPX 1X4 ALD7 B0CR SWW7 5ML MOLT DGA14	120V	LED 3348 LUMENS 4000K 24.1W	RECESSED	80	N/A	SIMILAR TO TYPE 'B' FIXTURE EXCEPT WITH DRY WALL KIT TYPE. LIGHT FIXTURE SETTING IS TO BE SET AT "4000K" AND "MEDIUM" LUMEN
C	COOPER CAT. #14CITS-NAY LITHONIA CAT. #CPX 2X4 ALB B0CR SWW7 5ML MOLT DGA14	120V	LED 4322 LUMENS 4000K 33.6W	RECESSED	80	N/A	2'x4" (610mmx122mm) LED BACKLIT FLAT PANEL FIXTURE C/W FIELD SELECTABLE LUMENS AND COLOUR TEMPERATURE, WHITE Frosted LENS, 10% 0-10V DIMMING DRIVER, AND WHITE FINISH. LIGHT FIXTURE SETTING IS TO BE SET AT "4000K" AND "LOW" LUMEN
F	LITHONIA CAT. #LDK4-AL01-SW11-L04-AR-LSS-MOLT-UZ2	120V	LED 1000 LUMENS 4000K 13W	RECESSED	80	N/A	RECESSED 4" (100mm) DIAMETER LED DOWNLIGHT SELECTABLE LUMENS AND SWITCHABLE COLOR TEMPERATURE, FIXTURE C/W SELF-FLANGED TRIM, SEMI-SPECULAR FINISH, AND UNIVERSAL DIMMING
G	LITHONIA CAT. #B5 1800LUM SEF AFL DND 120V G210 40K B0CR WCK	120V	LED 1800 LUMENS 4000K 100W	SUSPENDED	80	N/A	LED HIGHBAY FIXTURE C/W GENERAL DISTRIBUTION OPTICS, ACRYLIC, FROSTED LENS, WIRE GUARD, AND 0-10V DIMMING DRIVERS. NOTE: FIXTURE TO BE PASTED TO UNISTRUT CHANNELS SPANNING ACROSS THE TOP OF THE BOTTOM CHORD OF THE JOISTS. SUSPEND FIXTURE EVEN WITH THE BOTTOM OF THE ENTIRE FIXTURE ASSEMBLY IS TO HAVE A WHITE FINISH.
EMERG. LIGHTS	STANPRO CAT. #N1-06-12V3MLWH (SINGLE REMOTE) STANPRO CAT. #N2-06-12V3MLWH (DOUBLE REMOTE)	12V	LED SURFACE	N/A	N/A	N/A	HEAD LED REMOTE MINI PAR18 FIXTURE C/W COMPACT DESIGN, THERMOPLASTIC CONSTRUCTION, WHITE COLOUR, FULL AIMING ADJUSTMENT, AND 360° ROTATION.
COMBO UNIT	STANPRO CAT. #PRXAL-SERIES EM-1 #PRXAL10361-2N3LU-AT	12V/120V	LED SURFACE	N/A	N/A	N/A	LED EXTRUDED ALUMINUM PICTORAM FIXTURE C/W GREEN FACE AND WHITE LEGEND, UNIVERSAL MOUNTING TO SUIT WALL, END OR CEILING, MAXIMUM 2.5" (63mm) THICKNESS, 12V INTERNAL SEALED RECHARGEABLE BATTERY PROVIDING MINIMUM EMERGENCY WATTAGE AS NOTED BY THE CATALOGUE NUMBER C/W MICRO SIZE PAR18 12V 3W (MINIMUM) LED HEADS AND AUTO-TEST FEATURE.
EMERG. BATT.	STANPRO CAT. EM-2 #SLA12072-2N3LU/AT	12V/120V	LED SURFACE	N/A	N/A	N/A	LONG LIFE, SEALED RE-CHARGEABLE BATTERY PROVIDING MINIMUM EMERGENCY WATTAGE AS NOTED BY THE CATALOGUE NUMBER C/W MICRO SIZE PAR18 12V 3W (MINIMUM) LED HEADS AND AUTO-TEST FEATURE.
EXIT LIGHTS	STANPRO CAT. #RXAL-0-0-B-AT	12V/120V	2.5 WATT (MAX) 2 WATT (MIN) 100W	SURFACE	N/A	N/A	LED EXTRUDED ALUMINUM PICTORAM FIXTURE C/W GREEN FACE AND WHITE LEGEND, UNIVERSAL MOUNTING TO SUIT WALL, END OR CEILING AND MAXIMUM 63mm (2.5") THICKNESS. SELF-POWERED AND AUTOMATIC SELF-TEST DIAGNOSTIC

**NOTES:**  
1. LED LUMEN VALUES QUOTED FOR FIXTURES ARE TO BE CONSIDERED MINIMUM, AND AS ABSOLUTE OR DELIVERED LUMENS, LUMEN VALUES SHOULD NOT EXCEED MORE THAN 10% OF SPECIFIED OUTPUT.  
2. REFER TO SPECIFICATION FOR ALTERNATE EQUALS.  
3. EQUAL MANUFACTURER/SUPPLIERS MUST CONFIRM THE PROPOSED FIXTURE BY EMAIL WITH CONSULTANT'S OFFICE A MINIMUM OF 10 DAYS PRIOR TO TENDER CLOSE.

#### EQUIPMENT WIRING SCHEDULE

Description	Electrical Data	Starter	Ctrl Device	Isolating Device	Remote Items	Other	Interlock
Mechanical Item	Provided By	Size hp/kW/amps	Phase	Wiring	Wiring	Wiring	Wiring
HVAC-1 NEW ROOF TOP UNIT	M	575 47 A 3 60	3 60	Wiring	Wiring	Wiring	Wiring
EF-1 ROOF EXHAUST FAN	M	120 1/4 HP 1	1	Wiring	Wiring	Wiring	Wiring
EF-2 RANGEHOOD EXHAUST FAN	M	120 FHP 1	1	Wiring	Wiring	Wiring	Wiring
L-1 BARRIER FREE LAV (ELECTRONIC FAUCET)	M	120 FHP 1	1	Wiring	Wiring	Wiring	Wiring
L-2 LAV (ELECTRONIC FAUCET)	M	120 FHP 1	1	Wiring	Wiring	Wiring	Wiring
TP ELECTRIC TRAP PRIMER	M	120 FHP 1	1	Wiring	Wiring	Wiring	Wiring
EF-3 CEILING EXHAUST FAN	M	120 FHP 1	1	Wiring	Wiring	Wiring	Wiring

**Notes:**

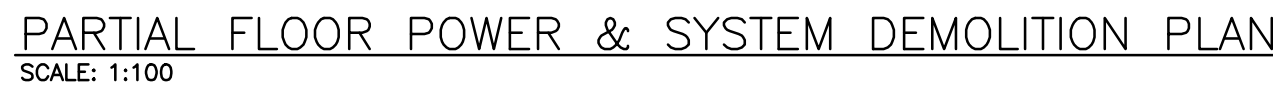
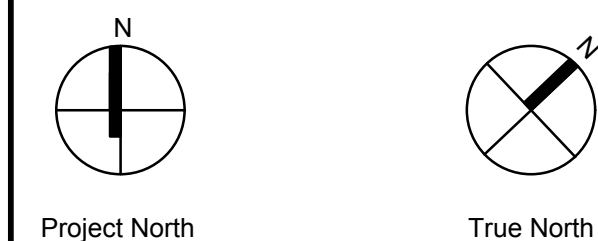
No.	Revision	Date
6	ISSUED FOR CONSTRUCTION	2024.09.17
5	ISSUED FOR PERMIT RESPONSES	2024.06.24
4	ISSUED FOR TENDER	2024.05.01
3	ISSUED FOR PERMIT	2024.04.19
2	ISSUED FOR SPA SUBMISSION	2024.02.27
1	ISSUED FOR SPA REVIEW SET	2024.02.06





- |                        |                            |
|------------------------|----------------------------|
| Scale: AS NOTED        | Date: MAY 2024             |
| Drawn by: SB           | Checked by: RV             |
| Job No.<br><b>2314</b> | Drawing No.<br><b>E201</b> |



[illegible]

No.	Revisions	Date
6	ISSUED FOR CONSTRUCTION	2024.09.17
5	ISSUED FOR PERMIT RESPONSES	2024.06.24
4	ISSUED FOR TENDER	2024.05.07
3	ISSUED FOR PERMIT	2024.04.18
2	ISSUED FOR SPA SUBMISSION	2024.02.27
1	ISSUED FOR SPA REVIEW SET	2024.02.06
No	Revision	Date



Scale: AS NOTED	Date: MAY 2024
-----------------	----------------

Drawn by: SB	Checked by: RV
Job No.	Drawing No.

2314	E202
------	------





2314 | E203



# EXISTING PANEL 'DP-X' SCHEDULE

VOLTAGE: 120/208 VOLTS	
PHASE: 3P, 4W	
MAINS: 100A	
NEUTRAL BUS: FULL	
MOUNTING: SURFACE	
NOTES: POW-A-LINE 3A	
SP	SPARE 100A 1 1
ER	WEST HALL ALCOVE PANEL 100A 2 2
ER	SPACE 2P 3 3
ER	SPACE 2P 4 4
ER	SPACE 2P 5 5
ER	SPACE 2P 6 6
ER	SPACE 2P 7 7
ER	SPACE 2P 8 8
ER	SPACE 2P 9 9
ER	SPACE 2P 10 10
ER	SPACE 2P 11 11
ER	SPACE 2P 12 12
ER	SPACE 2P 13 13
ER	SPACE 2P 14 14
ER	SPACE 2P 15 15
ER	SPACE 2P 16 16
ER	SPACE 2P 17 17
ER	SPACE 2P 18 18
ER	SPACE 2P 19 19
ER	SPACE 2P 20 20
ER	SPACE 2P 21 21
ER	SPACE 2P 22 22
ER	SPACE 2P 23 23
ER	SPACE 2P 24 24
ER	SPACE 2P 25 25
ER	SPACE 2P 26 26
ER	SPACE 2P 27 27
ER	SPACE 2P 28 28
ER	SPACE 2P 29 29

# PROPOSED PANEL 'DP-X' SCHEDULE

SP	SPARE 100A 1 1	2 100A NORTH HALL PANEL
ER	WEST HALL ALCOVE PANEL 100A 2 2	3 2P
ER	SPACE 2P 3 3	4 2P
ER	SPACE 2P 4 4	5 100A EAST CLASS PANEL LP-1
ER	SPACE 2P 5 5	6 2P
ER	SPACE 2P 6 6	7 2P
ER	SPACE 2P 7 7	8 2P
ER	SPACE 2P 8 8	9 2P
ER	SPACE 2P 9 9	10 2P
ER	SPACE 2P 10 10	11 2P
ER	SPACE 2P 11 11	12 2P
ER	SPACE 2P 12 12	13 2P
ER	SPACE 2P 13 13	14 2P
ER	SPACE 2P 14 14	15 2P
ER	SPACE 2P 15 15	16 2P
ER	SPACE 2P 16 16	17 2P
ER	SPACE 2P 17 17	18 2P
ER	SPACE 2P 18 18	19 2P
ER	SPACE 2P 19 19	20 2P
ER	SPACE 2P 20 20	21 2P
ER	SPACE 2P 21 21	22 2P
ER	SPACE 2P 22 22	23 2P
ER	SPACE 2P 23 23	24 2P
ER	SPACE 2P 24 24	25 2P
ER	SPACE 2P 25 25	26 2P
ER	SPACE 2P 26 26	27 2P
ER	SPACE 2P 27 27	28 2P
ER	SPACE 2P 28 28	29 2P

DESIGNATION

'ER' INDICATES EXISTING SERVICE AND BREAKER THAT SHOULD REMAIN UNTOUCHED

'SP' INDICATES EXISTING BREAKER THAT MAY BECOME SPARE DUE TO DEMOLITION. (CONFIRM ON SITE)

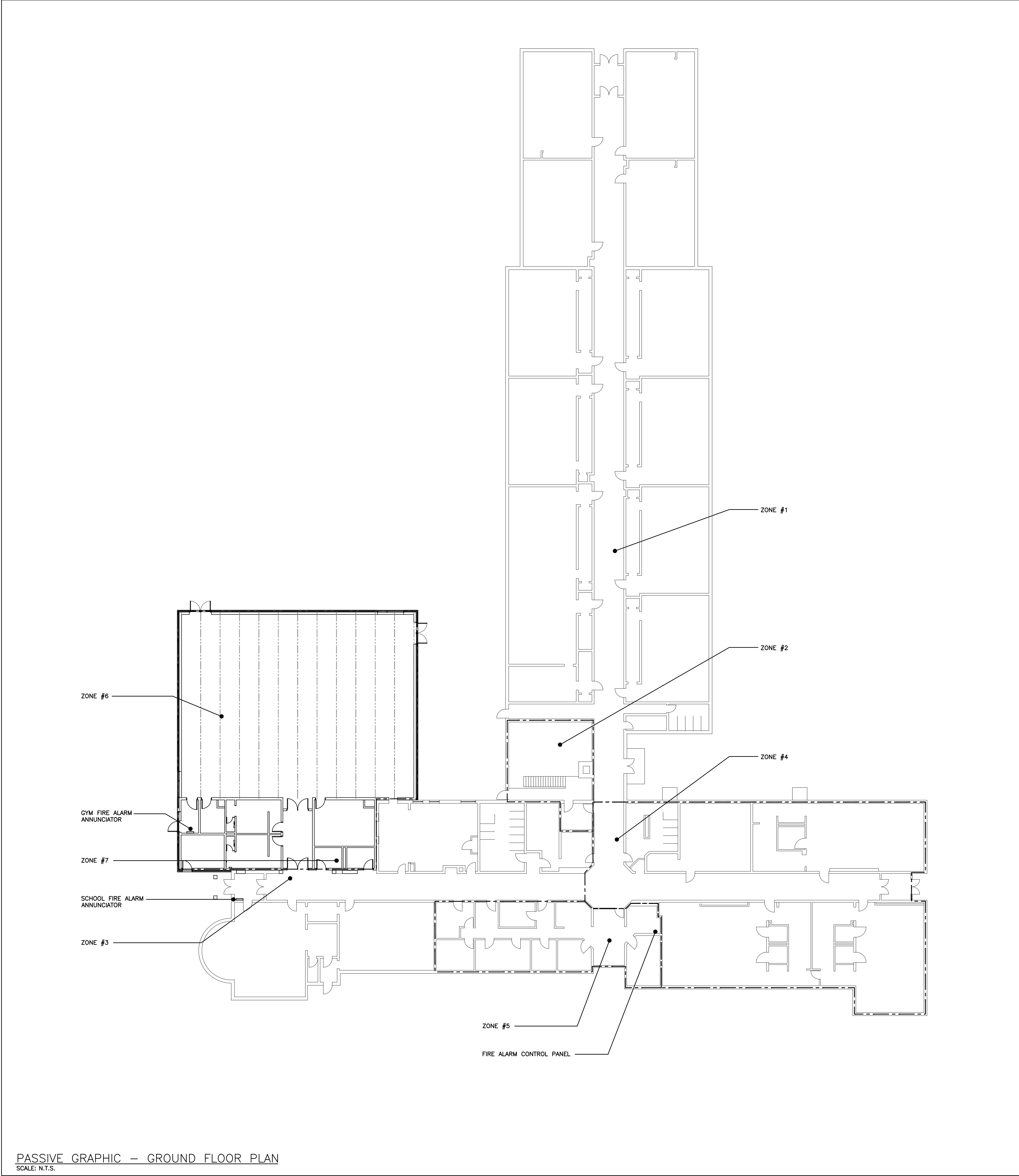
'NB' INDICATES NEW BREAKER AND WIRING TO SERVICE INDICATED. PROVIDE MOUNTING HARDWARE AS REQUIRED.

NOTES: THIS CONTRACTOR IS TO INVESTIGATE BREAKERS AND REVISE PANEL SCHEDULES TO SUIT RENOVATION, NOTING ANY BREAKERS THAT BECOME SPARE DUE TO DEMOLITION. THIS CONTRACTOR IS ALSO TO NOTIFY THE CONSULTANT OF ANY BREAKERS THAT ARE INDICATED TO BE DEMOLISHED OR REUSED, BUT WHICH ARE IN USE BY OTHER DEVICES OR SERVICES.

# PANEL 'G'

VOLTAGE: 120/208 VOLTS	
PHASE: 3P, 4W	
MAINS: 100A	
NEUTRAL BUS: FULL	
MOUNTING: SURFACE	
NOTES: SQUARE D NO430L1C	
DC Panel #1 A	EXIT LTG. 15A 1 1
W/R, STORAGE RMS & C.R. LTG. 20A 2 2	2 20A GYM T-SLOT REC.
DC Panel #2 A GYM LTG. 20A 3 3	4 20A GYM T-SLOT REC.
EXTERIOR LIGHT 15A 7 7	8 15A GYM FANS WEST
STORAGE ROOMS REC. 15A 11 11	12 20A BASKETBALL NET MOTOR WEST
C.R. 138 REC. & PLUMBING EQ. 15A 13 13	14 20A BASKETBALL NET MOTOR EAST
STORAGE ROOMS REC. 15A 15 15	16 20A MAINTENANCE T-SLOT REC.
C.R. 137 REC. & PLUMBING EQ. 15A 17 17	18 20A SCOURBOARD
W/R, 135 REC. & PLUMBING EQ. 15A 19 19	20 15A PROJECTION SCREEN
W/R, 134 REC. & PLUMBING EQ. 15A 21 21	22 15A VESTIBULE V-4 FAN HEATER
CORRIDOR REC. 15A 23 23	24 2P
DOOR OPERATOR 15A 25 25	26 2P
FIRE SHUTTER 15A 27 27	28 2P
EF-1 15A 29 29	30 2P
EF-2 15A 31 31	32 2P
EF-3 15A 33 33	34 2P
TRAP PRIMER 15A 35 35	36 2P
SPARE 15A 37 37	38 2P
SPARE 15A 39 39	40 2P
SPACE 41 41	42 2P
SPACE 43 43	44 2P
SPACE 45 45	46 2P
SPACE 47 47	48 2P
SPACE 49 49	50 2P
SPACE 51 51	52 2P
SPACE 53 53	54 2P
SPACE 55 55	56 2P
SPACE 57 57	58 2P
SPACE 59 59	60 2P
SPACE 61 61	62 2P
SPACE 63 63	64 2P
SPACE 65 65	66 2P
SPACE 67 67	68 2P
SPACE 69 69	70 2P
SPACE 71 71	72 2P
SPACE 73 73	74 2P
SPACE 75 75	76 2P
SPACE 77 77	78 2P
SPACE 79 79	80 2P
SPACE 81 81	82 2P
SPACE 83 83	84 2P
SPACE 85 85	86 2P
SPACE 87 87	88 2P
SPACE 89 89	90 2P
SPACE 91 91	92 2P
SPACE 93 93	94 2P
SPACE 95 95	96 2P
SPACE 97 97	98 2P
SPACE 99 99	100 2P
SPACE 101 101	102 2P
SPACE 103 103	104 2P
SPACE 105 105	106 2P
SPACE 107 107	108 2P
SPACE 109 109	110 2P
SPACE 111 111	112 2P
SPACE 113 113	114 2P
SPACE 115 115	116 2P
SPACE 117 117	118 2P
SPACE 119 119	120 2P
SPACE 121 121	122 2P
SPACE 123 123	124 2P
SPACE 125 125	126 2P
SPACE 127 127	128 2P
SPACE 129 129	130 2P
SPACE 131 131	132 2P
SPACE 133 133	134 2P
SPACE 135 135	136 2P
SPACE 137 137	138 2P
SPACE 139 139	140 2P
SPACE 141 141	142 2P
SPACE 143 143	144 2P
SPACE 145 145	146 2P
SPACE 147 147	148 2P
SPACE 149 149	150 2P
SPACE 151 151	152 2P
SPACE 153 153	154 2P
SPACE 155 155	156 2P
SPACE 157 157	158 2P
SPACE 159 159	160 2P
SPACE 161 161	162 2P
SPACE 163 163	164 2P
SPACE 165 165	166 2P
SPACE 167 167	168 2P
SPACE 169 169	170 2P
SPACE 171 171	172 2P
SPACE 173 173	174 2P
SPACE 175 175	176 2P
SPACE 177 177	178 2P
SPACE 179 179	180 2P
SPACE 181 181	182 2P
SPACE 183 183	184 2P
SPACE 185 185	186 2P
SPACE 187 187	188 2P
SPACE 189 189	190 2P
SPACE 191 191	192 2P
SPACE 193 193	194 2P
SPACE 195 195	196 2P
SPACE 197 197	198 2P
SPACE 199 199	200 2P
SPACE 201 201	202 2P
SPACE 203 203	204 2P
SPACE 205 205	206 2P
SPACE 207 207	208 2P
SPACE 209 209	210 2P
SPACE 211 211	212 2P
SPACE 213 213	214 2P
SPACE 215 215	216 2P
SPACE 217 217	218 2P
SPACE 219 219	220 2P
SPACE 221 221	222 2P
SPACE 223 223	224 2P
SPACE 225 225	226 2P
SPACE 227 227	228 2P
SPACE 229 229	230 2P
SPACE 231 231	232 2P
SPACE 233 233	234 2P
SPACE 235 235	236 2P
SPACE 237 237	238 2P
SPACE 239 239	240 2P
SPACE 241 241	242 2P
SPACE 243 243	244 2P
SPACE 245 245	246 2P
SPACE 247 247	248 2P
SPACE 249 249	250 2P
SPACE 251 251	252 2P
SPACE 253 253	254 2P
SPACE 255 255	256 2P
SPACE 257 257	258 2P
SPACE 259 259	260 2P
SPACE 261 261	262 2P
SPACE 263 263	264 2P
SPACE 265 265	266 2P
SPACE 267 267	268 2P
SPACE 269 269	270 2P
SPACE 271 271	272 2P
SPACE 273 273	274 2P
SPACE 275 275	276 2P
SPACE 277 277	278 2P
SPACE 279 279	280 2P
SPACE 281 281	282 2P
SPACE 283 283	284 2P
SPACE 285 285	286 2P
SPACE 287 287	288 2P
SPACE 289 289	290 2P
SPACE 291 291	292 2P
SPACE 293 293	294 2P
SPACE 295 295	296 2P
SPACE 297 297	298 2P
SPACE 299 299	300 2P
SPACE 301 301	302 2P
SPACE 303 303	304 2P
SPACE 305 305	306 2P
SPACE 307 307	308 2P
SPACE 309 309	310 2P
SPACE 311 311	312 2P
SPACE 313 313	314 2P
SPACE 315 315	316 2P
SPACE 317 317	318 2P
SPACE 319 319	320 2P
SPACE 321 321	322 2P
SPACE 323 323	324 2P
SPACE 325 325	326 2P
SPACE 327 327	328 2P
SPACE 329 329	330 2P
SPACE 331 331	332 2P
SPACE 333 333	334 2P
SPACE 335 335	336 2P
SPACE 337 337	338 2P
SPACE 339 339	340 2P
SPACE 341 341	342 2P
SPACE 343 343	344 2P
SPACE 345 345	346 2P
SPACE 347 347	348 2P
SPACE 349 349	350 2P
SPACE 351 351	352 2P
SPACE 353 353	354 2P
SPACE 355 355	356 2P
SPACE 357 357	358 2P
SPACE 359 359	360 2P
SPACE 361 361	362 2P
SPACE 363 363	364 2P
SPACE 365 365	366 2P
SPACE 367 367	368 2P
SPACE 369 369	370 2P
SPACE 371 371	372 2P
SPACE 373 373	374 2P
SPACE 375 375	376 2P
SPACE 377 377	378 2P
SPACE 379 379	380 2P
SPACE 381 381	382 2P
SPACE 383 383	384 2P
SPACE 385 385	386 2P
SPACE 387 387	388 2P
SPACE 389 389	390 2P
SPACE 391 391	392 2P
SPACE 393 393	394 2P
SPACE 395 395	396 2P
SPACE 397 397	398 2P
SPACE 399 399	400 2P
SPACE 401 401	402 2P
SPACE 403 403	404 2P
SPACE 405 405	406 2P
SPACE 407 407	408 2P
SPACE 409 409	410 2P
SPACE 411 411	412 2P
SPACE 413 413	414 2P
SPACE 415 415	416 2P
SPACE 417 417	418 2P
SPACE 419 419	420 2P
SPACE 421 421	422 2P
SPACE 423 423	424 2P
SPACE 425 425	426 2P
SPACE 427 427	428 2P
SPACE 429 429	430 2P
SPACE 431 431	432 2P
SPACE 433 433	434 2P
SPACE 435 435	436 2P
SPACE 437 437	438 2P
SPACE 439 439	440 2P
SPACE 441 441	442 2P
SPACE 443 443	444 2P
SPACE 445 445	446 2P
SPACE 447 447	448 2P
SPACE 449 449	450 2P
SPACE 451 451	452 2P
SPACE 453 453	454 2P
SPACE 455 455	456 2P
SPACE 457 457	458 2P
SPACE 459 459	460 2P
SPACE 461 461	462 2P
SPACE 463 463	464 2P
SPACE 465 465	466 2P
SPACE 467 467	468 2P
SPACE 469 469	470 2P
SPACE 471 471	472 2P
SPACE 473 473	474 2P
SPACE 475 475	476 2P
SPACE 477 477	478 2P
SPACE 479 479	480 2P
SPACE 481 481	482 2P
SPACE 483 483	484 2P
SPACE 485 485	486 2P
SPACE 487 487	488 2P
SPACE 489 489	490 2P
SPACE 491 491	492 2P
SPACE 493 493	494 2P
SPACE 495 495	496 2P
SPACE 497 497	498 2P
SPACE 499 499	500 2P
SPACE 501 501	502 2P
SPACE 503 503	504 2P
SPACE 505 505	506 2P
SPACE 507 507	508 2P
SPACE 509 509	510 2P
SPACE 511 511	512 2P
SPACE 513 513	514 2P
SPACE 515 515	516 2P
SPACE 517 517	518 2P
SPACE 519 519	520 2P
SPACE 521 521	522 2P
SPACE 523 523	524 2P
SPACE 525 525	526 2P
SPACE 527 527	528 2P
SPACE 529 529	530 2P
SPACE 531 531	532 2P
SPACE 533 533	534 2P
SPACE 535 535	536 2P
SPACE 537 537	538 2P
SPACE 539 539	540 2P
SPACE 541 541	542 2P
SPACE 543 543	544 2P
SPACE 545 545	546 2P
SPACE 547 547	548 2P
SPACE 549 549	550 2P
SPACE 551 551	552 2P
SPACE 553 553	554 2P
SPACE 555 555	556 2P
SPACE 557 557	558 2P
SPACE 559 559	560 2P
SPACE 561 561	562 2P
SPACE 563 563	564 2P
SPACE 565 565	566 2P
SPACE 567 567	568 2P
SPACE 569 569	570 2P
SPACE 571 571	572 2P
SPACE 573 573	574 2P
SPACE 575 575	576 2P
SPACE 577 577	578 2P
SPACE 579 579	580 2P
SPACE 581 581	582 2P
SPACE 583 583	584 2P
SPACE 585 585	586 2P
SPACE 587 587	588 2P
SPACE 589 589	590 2P
SPACE 591 591	592 2P
SPACE 593 593	594 2P
SPACE 595 595	596 2P
SPACE 597 597	598 2P
SPACE 599 599	600 2P
SPACE 601 601	602 2P
SPACE 603 603	604 2P
SPACE 605 605	606 2P
SPACE 607 607	608 2P
SPACE 609 609	610 2P
SPACE 611 611	612 2P
SPACE 613 613	614 2P
SPACE 615 615	616 2P
SPACE 617 617	618 2P
SPACE 619 619	620 2P
SPACE 621 621	622 2P
SPACE 623 623	624 2P
SPACE 625 625	626 2P
SPACE 627 627	628 2P
SPACE 629 629	630 2P
SPACE 631 631	632 2P
SPACE 633 633	634 2P
SPACE 635 635	636 2P
SPACE 637 637	638 2P
SPACE 639 639	640 2P
SPACE 641 641	642



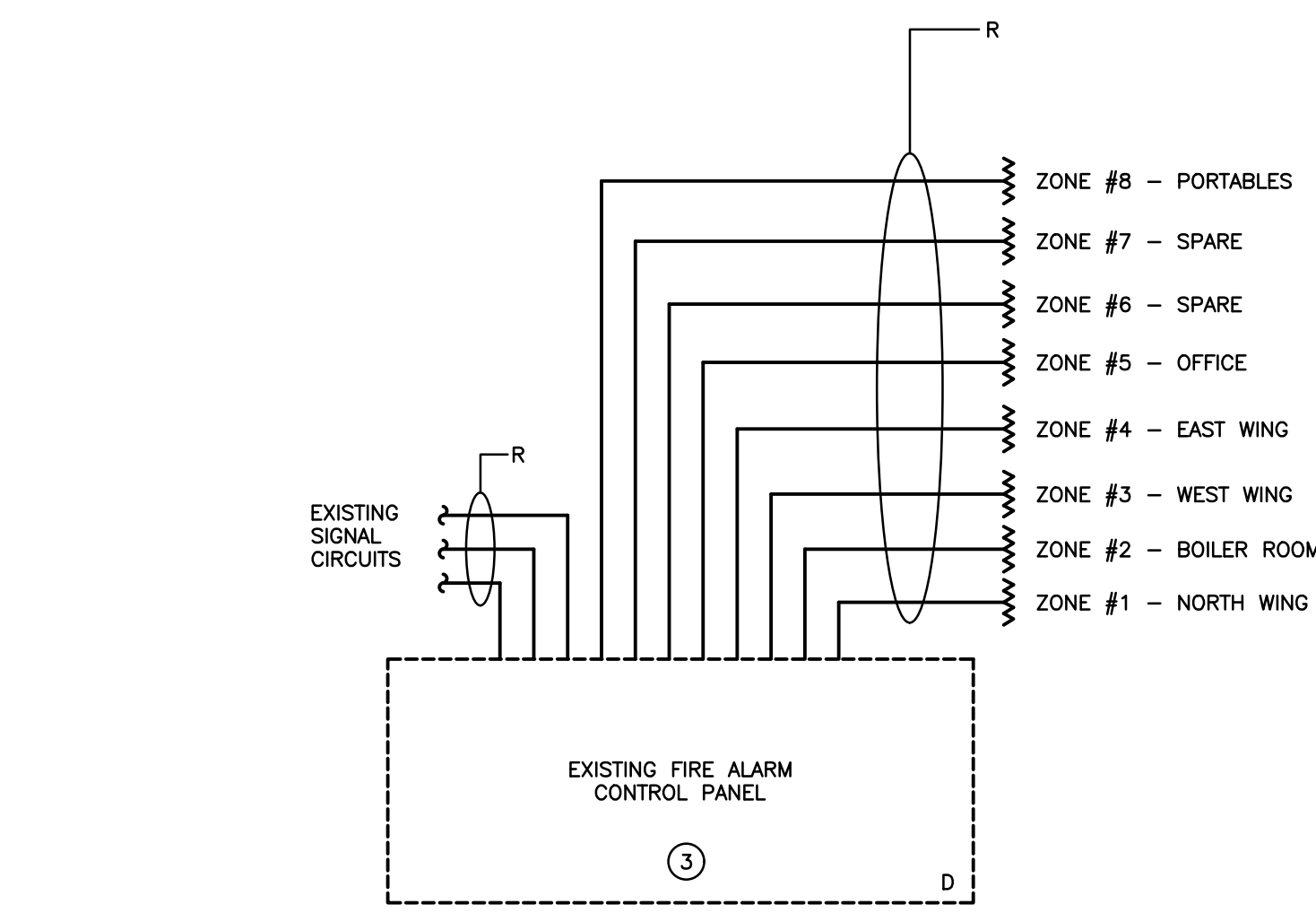


PASSIVE GRAPHIC - GROUND FLOOR PLAN  
SCALE: N.T.S.

FIRE ALARM ANNUNCIATOR SCHEDULE

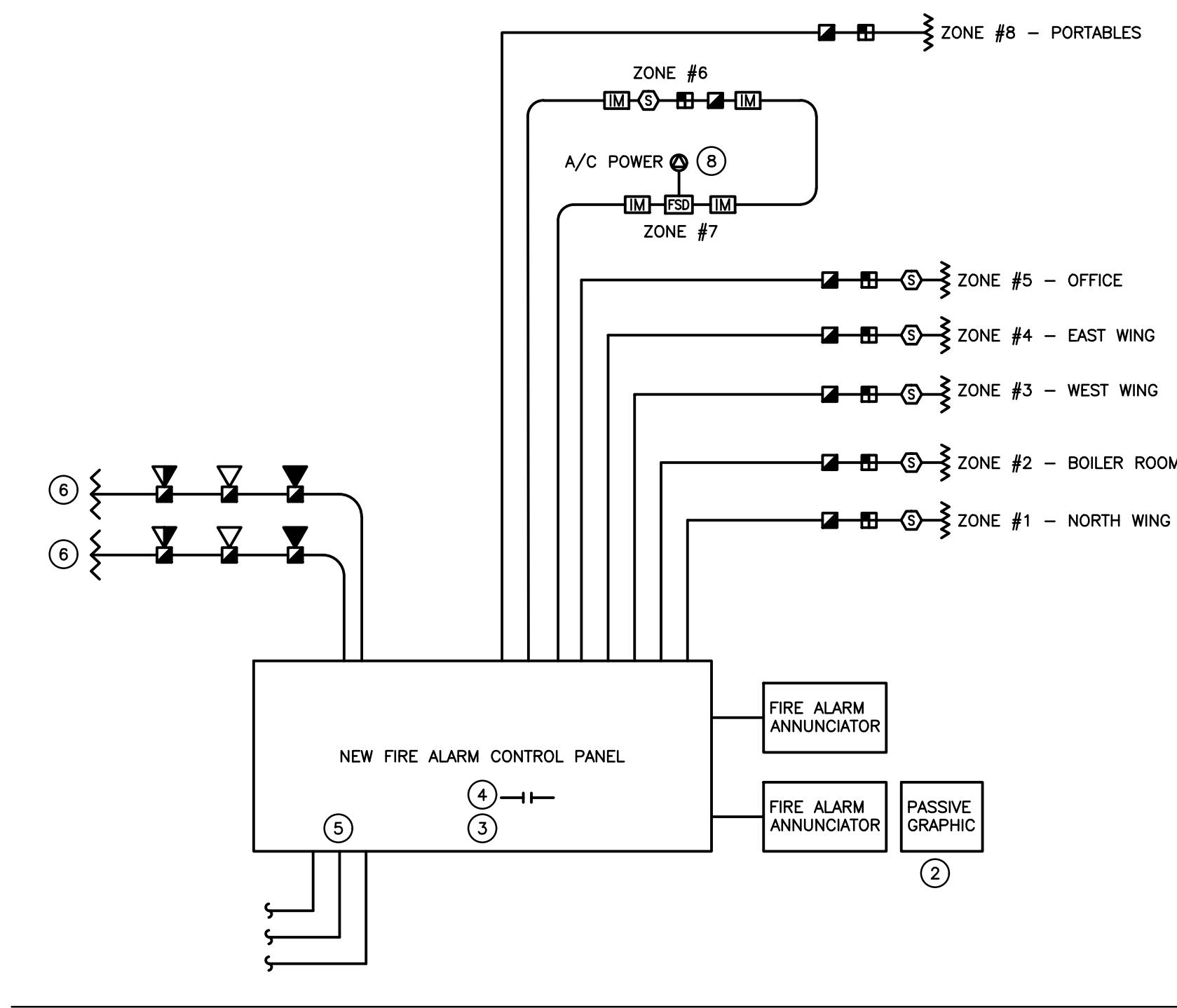
Zone	Description	Alarm	Supervisory
1	NORTH WING	•	
2	BOILER ROOM	•	
3	WEST WING	•	
4	EAST WING	•	
5	OFFICE	•	
6	GYMNASIUM	•	
7	FIRE SMOKE DAMPER	•	
8	PORTABLES	•	
9	SPARE		
10	SPARE		
11	SPARE		
12	SPARE		

PARTIAL FIRE ALARM RISER DIAGRAM - DEMOLITION  
SCALE: N.T.S.

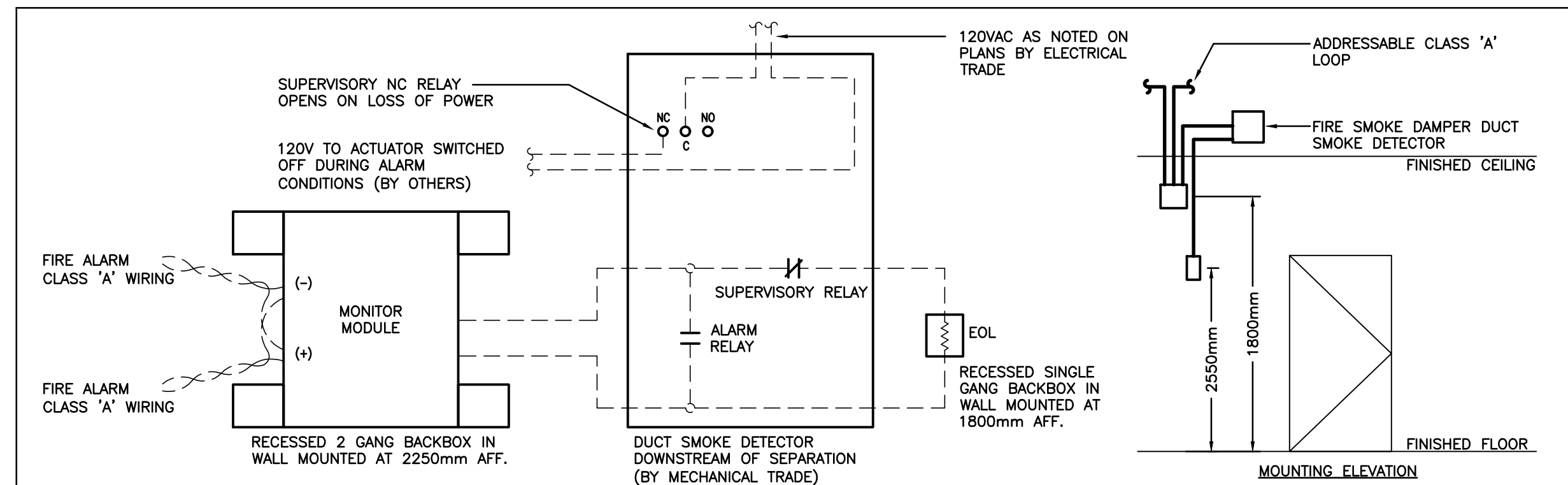


GROUND FLOOR

PARTIAL FIRE ALARM RISER DIAGRAM - RENOVATION  
SCALE: N.T.S.



GROUND FLOOR



NOTES:

- MONITOR MODULE AND END OF LINE RESISTOR DEVICE MOUNTING HEIGHTS SHALL BE PER CAN/ULC S524 (LATEST EDITION).
- MOUNT DEVICES WITHIN ACCESSIBLE LOCATIONS IN SERVICE ROOMS, WHERE POSSIBLE, IN THE VICINITY OF RESPECTIVE FIRE SMOKE DAMPER DEVICES IN FINISHED SPACES TO BE C/W FLUSH MOUNT DEVICE BOXES AND COVERS. DEVICE COVERS TO BE LABELLED PER CAN/ULC S524 (LATEST EDITION).

A-FIRE/SMOKE DAMPER INSTALLATION DETAIL  
SCALE: N.T.S.

SEQUENCE OF OPERATIONS

NORMAL CONDITION:  
ALARM CONTACT OPEN, AUXILIARY CONTACT CLOSED, AC POWER IS PROVIDED TO DAMPER ACTUATOR, DAMPER IS OPEN.

ALARM CONDITION:  
ALARM CONTACT CLOSURES, BUILDING FIRE ALARM IS ACTIVATED, AUXILIARY CONTACT OPENS, AC POWER IS REMOVED FROM DAMPER ACTUATOR.

SUPERVISION:  
LOSS OF AC POWER, COVER LEFT OFF, WIRING ISSUE WILL CAUSE TROUBLE CONDITION. SUPERVISORY CONTACT OPENS, MAIN FIRE ALARM CONTROL PANEL WILL INDICATE TROUBLE. ADDRESSABLE MODULE WILL INDICATE DAMPER LOCATION, DAMPER POSITION IS NOT MONITORED BY FIRE ALARM CONTROL PANEL.

FIRE ALARM SPECIFIC NOTES

- REFER TO FLOOR PLANS FOR EXACT LOCATION AND QUANTITY OF NEW DEVICES.
- PROVIDE NEW FIRE ALARM PASSIVE GRAPHIC TO SUIT ADDITIONAL FIRE ALARM ZONES.
- EXISTING FIRE ALARM CONTROL PANEL IS TO BE REPLACED WITH NEW, DISCONNECT EXISTING SIGNAL AND INITIATING CIRCUITS AND RECONNECT TO NEW PANEL.
- PROVIDE TWO SETS OF RELAYS FOR SECURITY SYSTEM FOR ALARM AND TROUBLE SIGNALS.
- RECONNECT ALL OTHER ACCESSORIES AS REQUIRED (SECURITY, ULC MONITORING, ETC.)
- EXTEND EXISTING SIGNAL WIRING TO SUIT NEW DEVICES.
- PROVIDE NEW FIRE ALARM ZONES AS INDICATED.
- INDICATES 120V POWER AND FIRE ALARM CONNECTIONS TO SMOKE/FIRE DAMPER WITH INTEGRAL SMOKE DETECTOR. REFER TO FIRE ALARM SPECIFICATIONS, COORDINATE EXACT LOCATION/CONNECTION REQUIREMENTS WITH MECHANICAL CONTRACTOR. SMOKE/FIRE DAMPER AND ASSOCIATED INTEGRAL SMOKE DETECTOR TO BE PROVIDED AND INSTALLED BY MECHANICAL CONTRACTOR. PROVIDE MONITORING MODULE(S) PER SMOKE/FIRE DAMPER TO 120V POWER SUPPLY CONNECTION TO THE DAMPER ACTUATOR AND INTEGRAL SMOKE DETECTOR ALARM AS SIGNAL. A TROUBLE CONDITION SHALL BE ACTIVATED DUE TO THE LOSS OF AC POWER AT THE MAIN CONTROL PANEL, CONSISTING OF AUDIBLE AND VISUAL TROUBLE SIGNAL UNTIL ACKNOWLEDGED BY OPERATOR. REFER TO DETAIL A/E302.

The contractor shall verify all dimensions and report all errors and discrepancies to the Consultant before commencement of the work. The drawings show general arrangement of services. Follow as closely as actual building construction will permit. Obtain approval for relocation of service from Consultant before commencement of the work. The drawings do not indicate all offsets fitting and accessories which may be required. Provide the same to meet the required conditions. Drawings and specifications, etc., prepared and issued by the consultant are the property of the consultant and must be returned at the completion of the project. These documents are not to be duplicated or copied without the consent of the Consultant. Do not scale this drawing. © 2024 DEI Consulting Engineers Inc.