

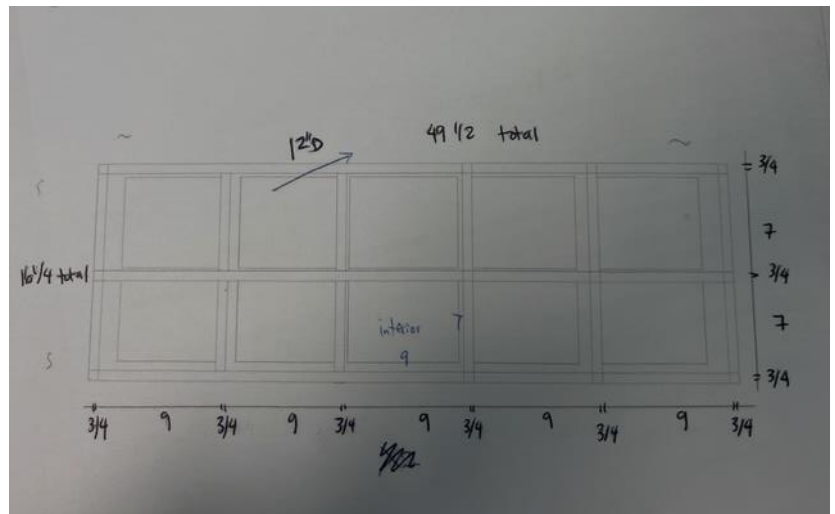
Renovations – Notes

Infant

10 custom cubbies in classroom as close to the entry door as possible 13 wide and 12 high (Space underneath – 5) – Design shown in picture below



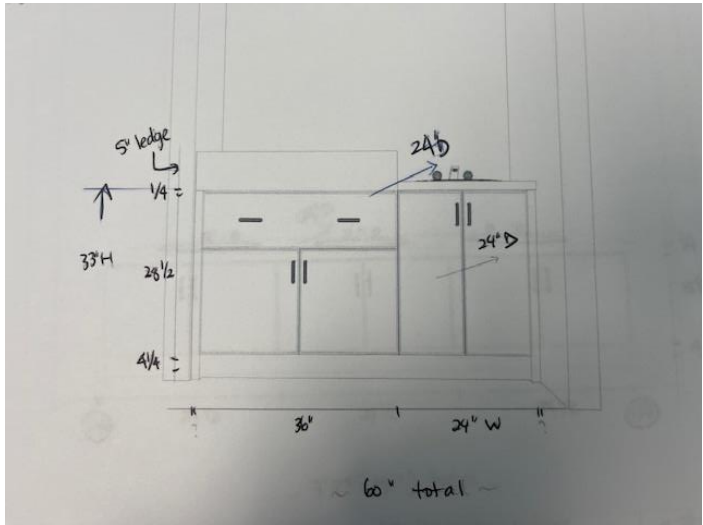
10 bathroom cubbies - design and specs below



Half wall at the end of change table facing the classroom (reference picture below) – 6ft high from the floor to accommodate storage above opening



Change table (lip, drawer, cupboards, sink and countertop) Specs and picture below



Child size toilet and sink and mirror in front of sink



*Slight variation in height may occur based on the height of the seat used

American Standard



Classroom countertops must have one food prep sink and one handwashing sink (Both stainless steel). Please also have uppers above the **full length** of countertop and cupboards below – leave room for mini fridge and microwave. Please use drawing for design reference but use measurements from plans (Fridge 18inches – Sinks 30inches)



Blinds for window and doors (Blinds – Blackout Roller Shade – with chain)



Bathroom custom storage - Cabinets the length of the wall (above toilet and sink)

Teacher closet with shelving (adjustable) Labelled on drawing as toys and materials - floor to ceiling

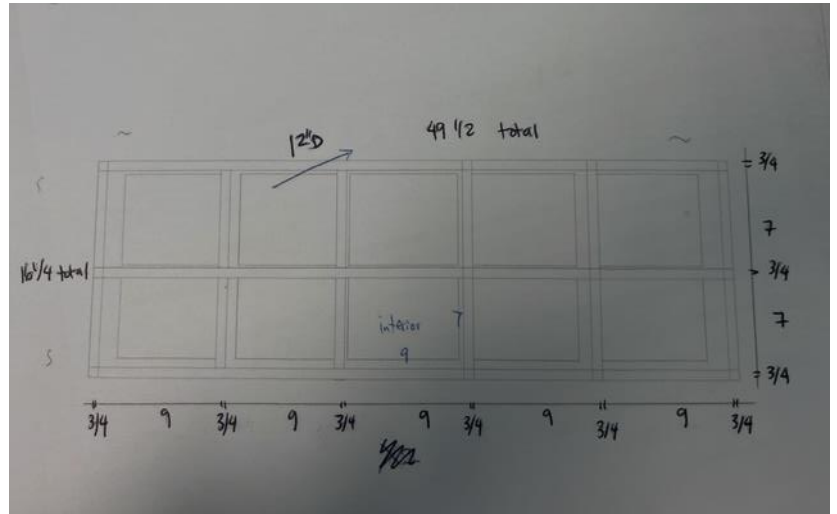
Electrical plugs (Child proof)

Dimmer switches for classroom lights

White ¼ inch puckboard 4inches high on all exposed walls (screwed in)

Toddler 1

16 bathroom cubbies (make 2 of 8 using the specs and design below)



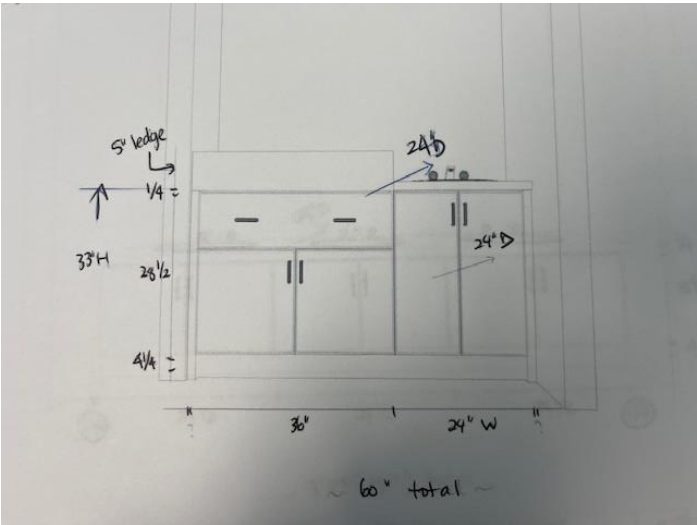
15 Custom classroom cubbies - 9.6" wide x 48" high x 12" deep



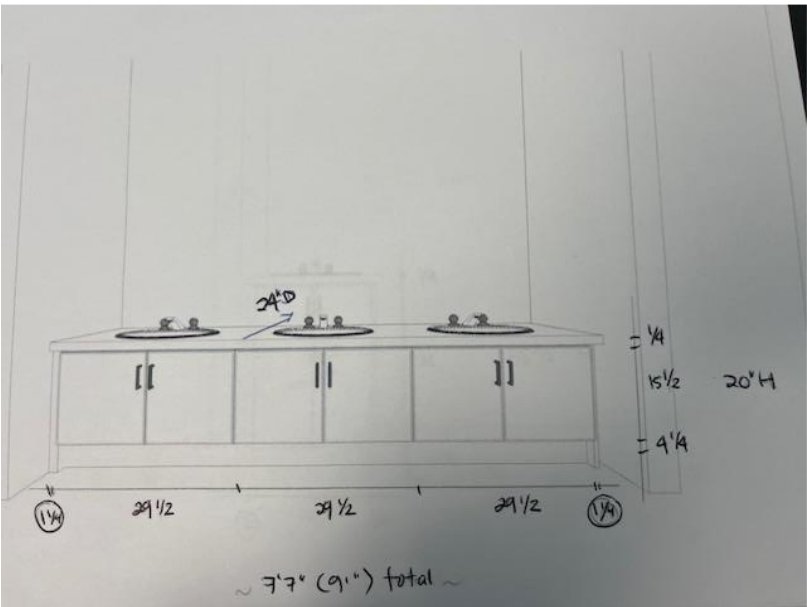
Half wall at the end of change table facing the classroom (reference picture below) – 6ft high from the floor to accommodate storage above opening



Change table (lip, drawer, cupboards, sink and countertop) Specs and picture below



Child size toilets (2) and sink vanity (2) with mirrors (2) in front of sink (see specs below as example) please note the vanities will be singles



Blinds for window and doors (Blinds – Blackout Roller Shade – with chain)



Bathroom custom storage - Cabinets the length of the wall (above two toilet)

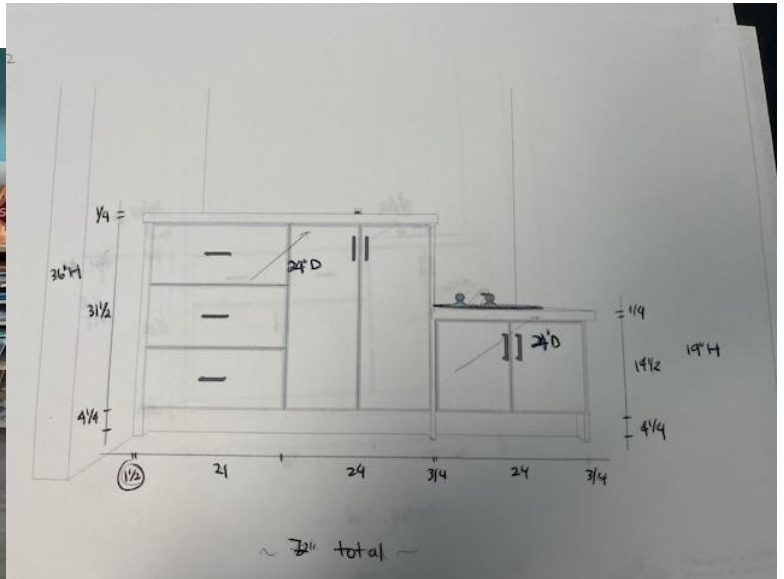
Teacher closet with shelving (adjustable) Labelled on drawing as toys and materials - floor to ceiling

Electrical plugs (Child proof)

Dimmer switches for classroom lights

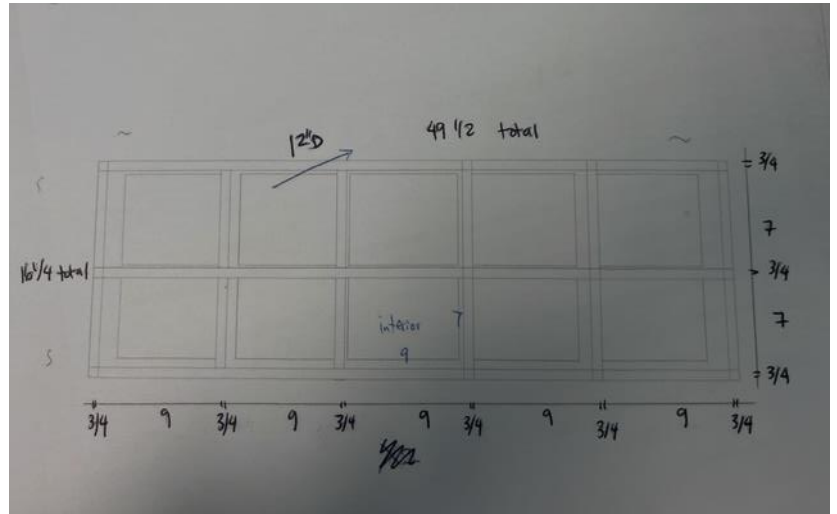
White $\frac{1}{4}$ inch puckboard 4 inches high on all exposed walls (screwed in)

Classroom countertops must have a child size/level sink (stainless steel) with bare minimum counter space then an adult sink (stainless steel) with as much countertop as possible. Please have uppers above the full length of countertop and cupboards below. (example below of design – use heights only and other measurements from plans)



Toddler 2

16 bathroom cubbies (make 2 of 8 using the specs and design below)



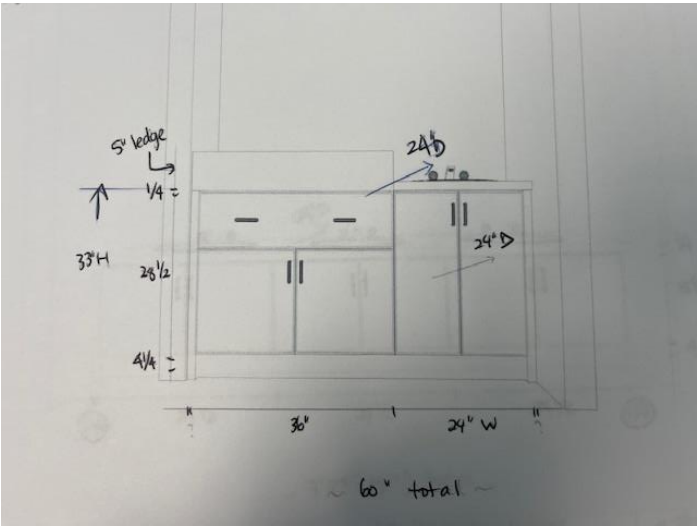
15 Custom classroom cubbies - 9.6" wide x 48" high x 12" deep



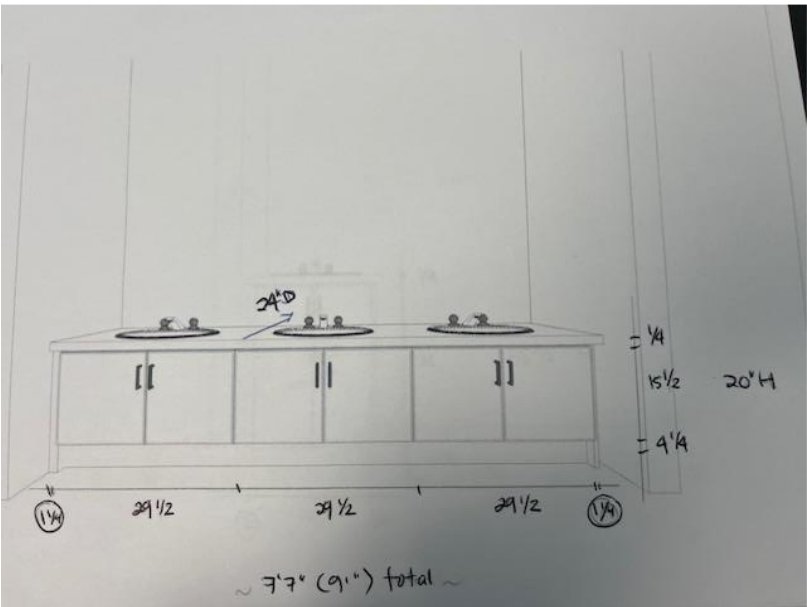
Half wall at the end of change table facing the classroom (reference picture below) – 6ft high from the floor to accommodate storage above opening



Change table (lip, drawer, cupboards, sink and countertop) Specs and picture below



Child size toilets (2) and sink vanity (2) with mirrors (2) in front of sink (see specs below as example) please note the vanities will be a set of two only



Blinds for window and doors (Blinds – Blackout Roller Shade – with chain)



Bathroom custom storage - Cabinets the length of the wall (above two sinks)

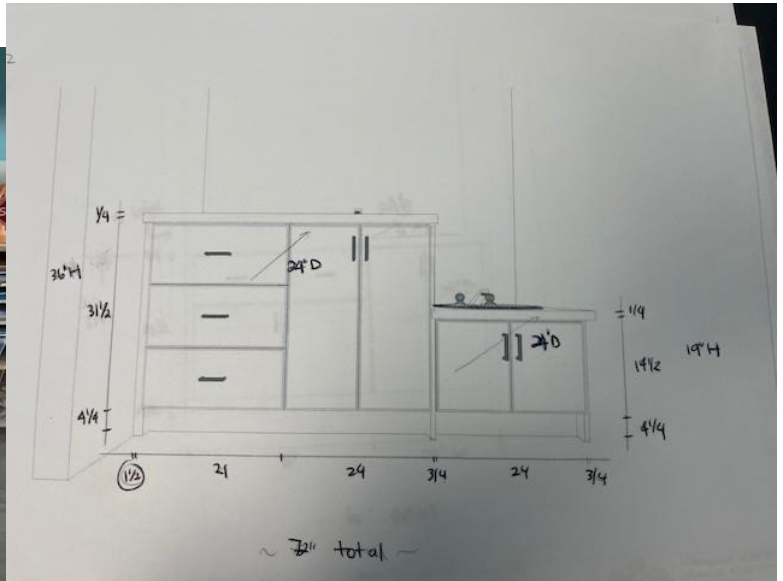
Teacher closet with shelving (adjustable) Labelled on drawing as toys and materials - floor to ceiling

Electrical plugs (Child proof)

Dimmer switches for classroom lights

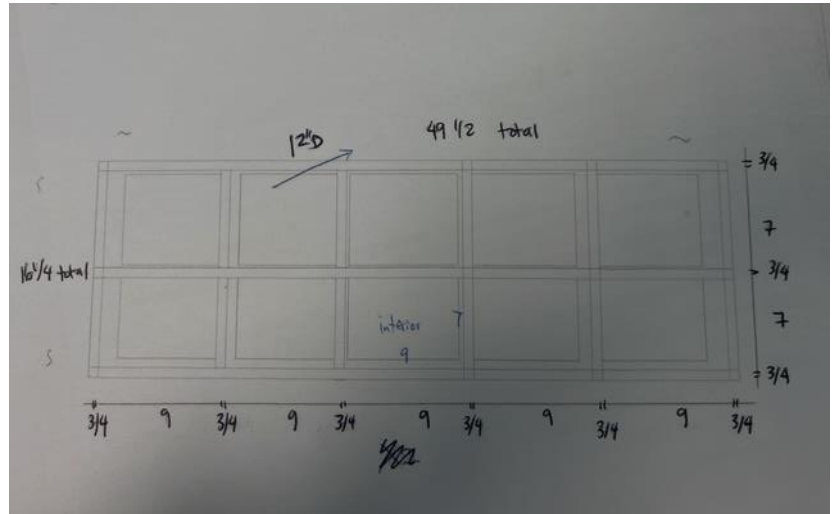
White $\frac{1}{4}$ inch puckboard 4 inches high on all exposed walls (screwed in)

Classroom countertops must have a child size/level sink (stainless steel) with bare minimum counter space then an adult sink (stainless steel) with as much countertop as possible. Please have uppers above the full length of countertop and cupboards below. (example below of design – use heights only and other measurements from plans)

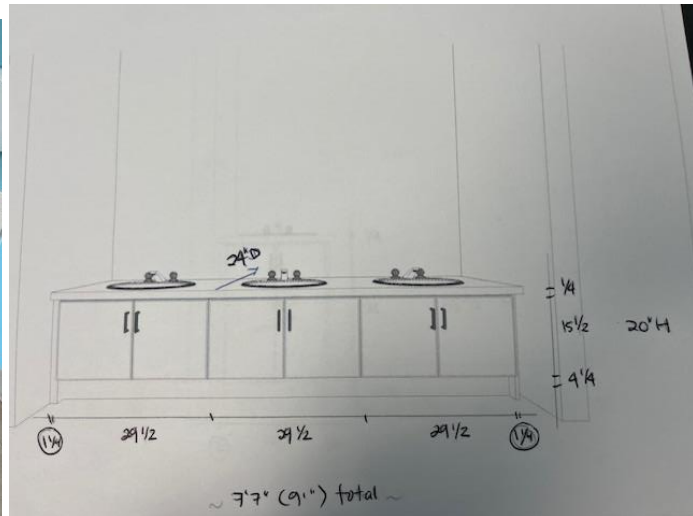


Preschool 1

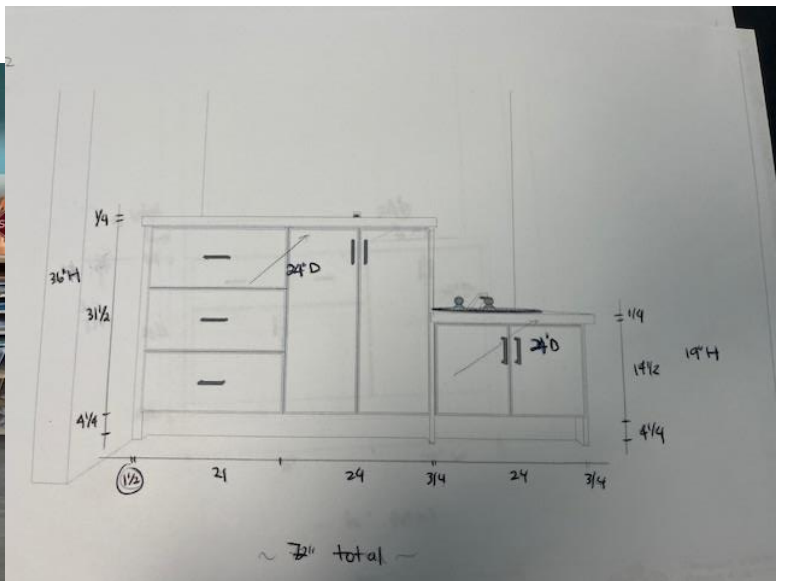
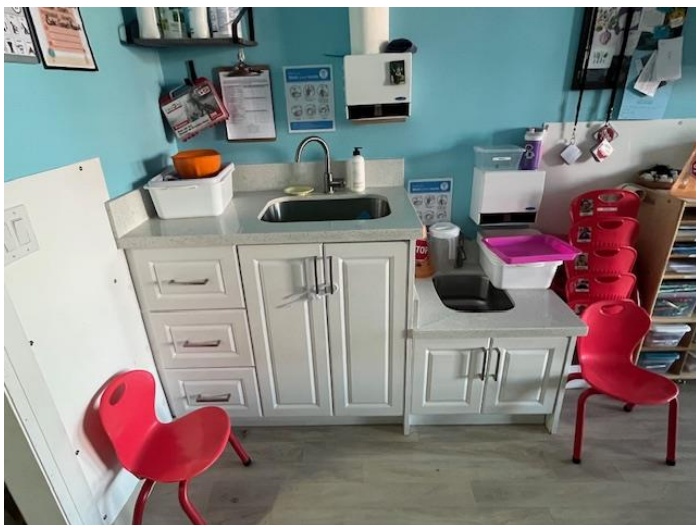
24 bathroom cubbies - design and specs below – fit 24 (2 or three rows) from side to side of wall above sinks



Child size toilets (3) and sink vanity (3) with mirrors (3) in front of sink



Classroom countertops must have a child size/level sink (stainless steel) with bare minimum counter space then an adult sink (stainless steel) with as much countertop as possible. Please have uppers above the full length of countertop and cupboards below. (example below of design – use heights only and other measurements from plans)



24 Custom classroom cubbies - 9.6" wide x 48" high x 12" deep



Blinds for window and doors (Blinds – Blackout Roller Shade – with chain)



Bathroom custom storage - Cabinets the length of the wall (above toilets)

Teacher closet with shelving (adjustable) Labelled on drawing as toys and materials - floor to ceiling

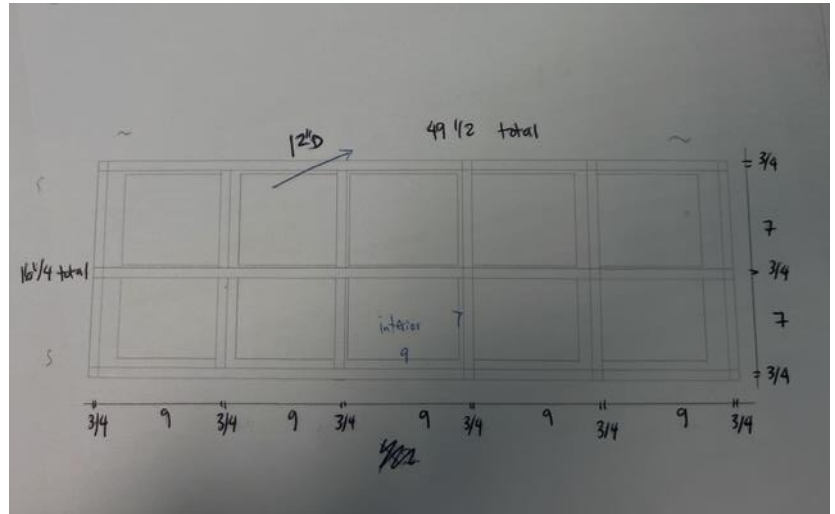
Electrical plugs (Child proof)

Dimmer switches for classroom lights

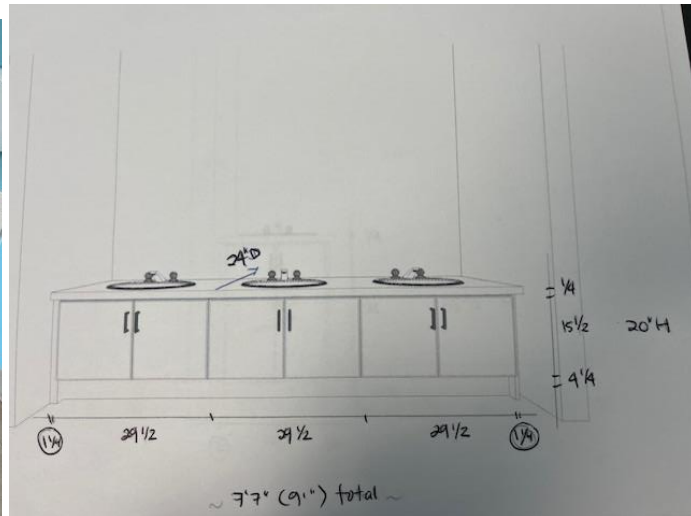
White ¼ inch puckboard 4 inches high on all exposed walls (screwed in)

Preschool 2

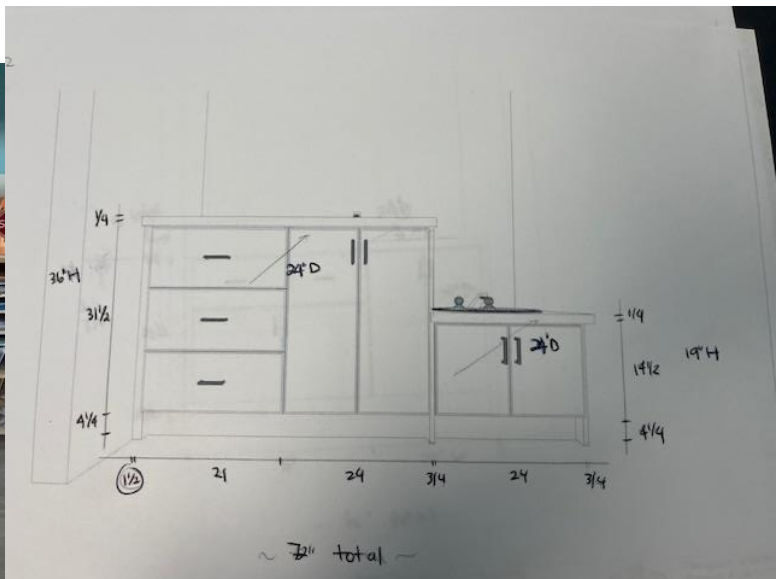
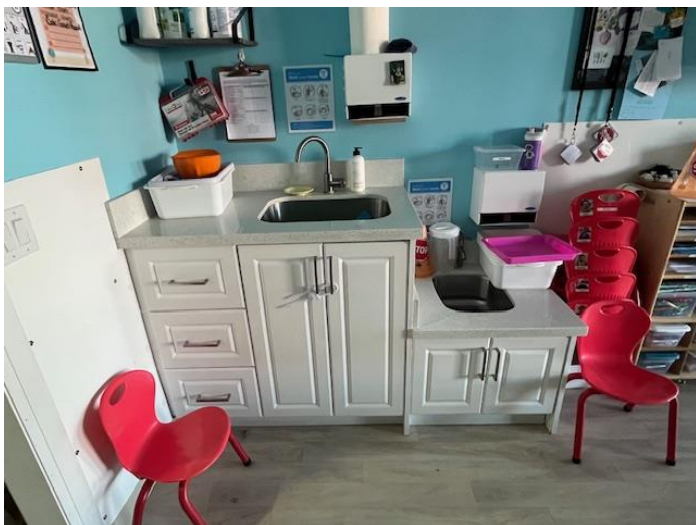
24 bathroom cubbies - design and specs below – fit 24 (2 or three rows) from side to side of wall above sinks



Child size toilets (3) and sink vanity (3) with mirrors (3) in front of sink



Classroom countertops must have a child size/level sink (stainless steel) with bare minimum counter space then an adult sink (stainless steel) with as much countertop as possible. Please have uppers above the full length of countertop and cupboards below. (example below of design – use heights only and other measurements from plans



24 Custom classroom cubbies - 9.6" wide x 48" high x 12" deep



Blinds for window and doors (Blinds – Blackout Roller Shade – with chain)



Bathroom custom storage - Cabinets the length of the wall (above toilets)

Teacher closet with shelving (adjustable) Labelled on drawing as toys and materials - floor to ceiling

Electrical plugs (Child proof)

Dimmer switches for classroom lights

White ¼ inch puckboard 4inches high on all exposed walls (screwed in)

Staff washroom

3 elongated toilets with open/split seat

New vanity with 2 porcelain sinks with quarts countertop and fill cupboards below

New stalls

Universal Washroom

1 elongated toilet with open/split seat

1 universal wall mounted sink

Staff room

24 inches with 30 inch stainless steal sink and 24 inches countertop (Fridge – 24 inch countertop with cupboard underneath– 30inch stainless steel sink – 24 inch countertop with drawers underneath) – 78 inches countertop in total.

Uppers all above the full 78inch countertop - Quarts

Laundry/Storage

Drawing – Please note drawing shows three cabinets and the rest quarts countertop with uppers Leave space for laundry sink, washer and dryer

Storage room(s)

All custom shelving around the perimeter of the room from floor to ceiling

Kitchen

Uppers and base cabinets all around. The area behind the door that is a countertop that will be empty below as we will store our rolling trays there. We will still have uppers above it. We have a double wall oven and tall panty cabinets beside the fridge. There is a triple sink and a handwashing sink



Center Specifics

Key fob system at the front door

Camera/security system – front door panel, motion sensors, door connectors, cameras in each classroom, hallway, playground and around the perimeter of the building (34 in total 4K cameras). Must hook up to DVR system to view footage on TV

Full fire system with the fire panel, pull stations, extinguishers, smoke/heat detectors, carbon dioxide detectors, emergency lighting, emergency exit signs, etc.

All doors are metal doors with full glass inserts

60 Gallon water heater – in equipment storage room beside kitchen

Grease trap – location - in equipment storage room beside kitchen

Reroute meter from next door to equipment storage room beside kitchen

Pot lights in all hallways and 12x24 lights in the rooms

Acoustic drop ceiling – rip out all drop down ceilings

Floors – Athletica sheet vinyl flooring or similar

Base – Johnsonite rubber base

Paint – Eggshell - 6786 cloudless

Playground

Artificial grass:

717 SF in toddler - 785 SF in infant - 1415 SF in preschool

Paved/concrete:

462SF walkway - 334 SF bike path (with yellow lines in the middle) in toddler - 308 SF bike path (with yellow lines in the middle) in preschool

All exterior fencing to be 8ft wooden (as per drawings) and all interior fencing and gates to be 4ft chain link fencing (as per drawings)

Heavy duty metal gate with key fob access – location shown on drawing

3 sheds – 6x10 with shelves and hooks - power lines to all sheds

2 sandboxes Toddler 4x6 and Preschool 8x8

Picnic tables – child size and wooden

Shade sail for all three playgrounds Infant 10x10 Toddler 12x12 Preschool 16x16 (picture as reference)



Wooden cabana for all three playground Infant 8x8 Toddler and Preschool 10x10 – Style below



Pipe Walls on exterior fence Infant – 20inches high max



Toddler - no taller than 3ft high and Preschool – no taller than 4 ft high



Painting easels 3x3 panel (with black caps) x4 (infant x1 Toddler x 1 Preschool x2)

Infant – no taller than 2 ft high and Toddler - no taller than 3ft high and Preschool – no taller than 4 ft high



Wooden balance beams x2 (Toddler 4ft long – Preschool 6 ft long)



Double sided chalk boards x 3 (to divide each playground) 4x8 sheet



Rectangle (2ft x 4ft) garden for Preschool and small vertical garden for Toddlers (approx. 32inches x 45inch x 9)



3 Mud Kitchens - One for each playground – Infant 4ft (one sink) – Toddler 6ft (no space between “stove” and sink) – Preschool 8ft (as below)

