

2050 Guelph Line
Burlington, Ontario

4181 NEW STREET
Burlington, Ontario

sn/der

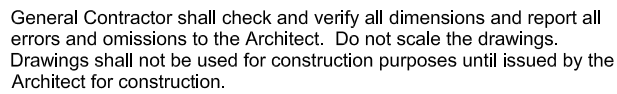
Consultants

Mechanical and Electrical Consultants

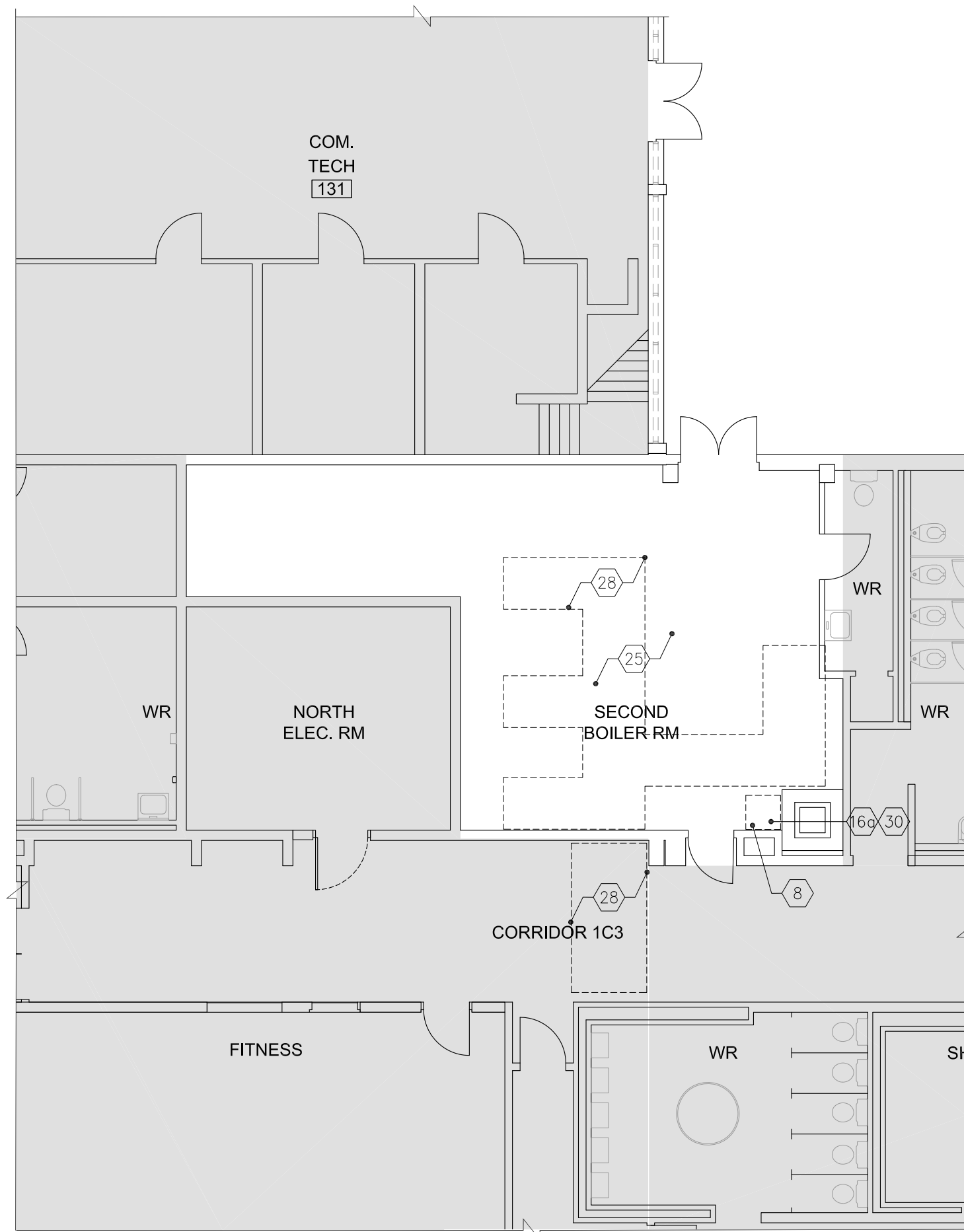
Structural Consultants

A wide-angle photograph of a modern school building. The building features a combination of yellow brick and light-colored horizontal siding. Large glass windows are prominent, showing the interior of the building. A paved courtyard area is in the foreground, and a few people are walking. A yellow sign is visible near a small tree in the background.

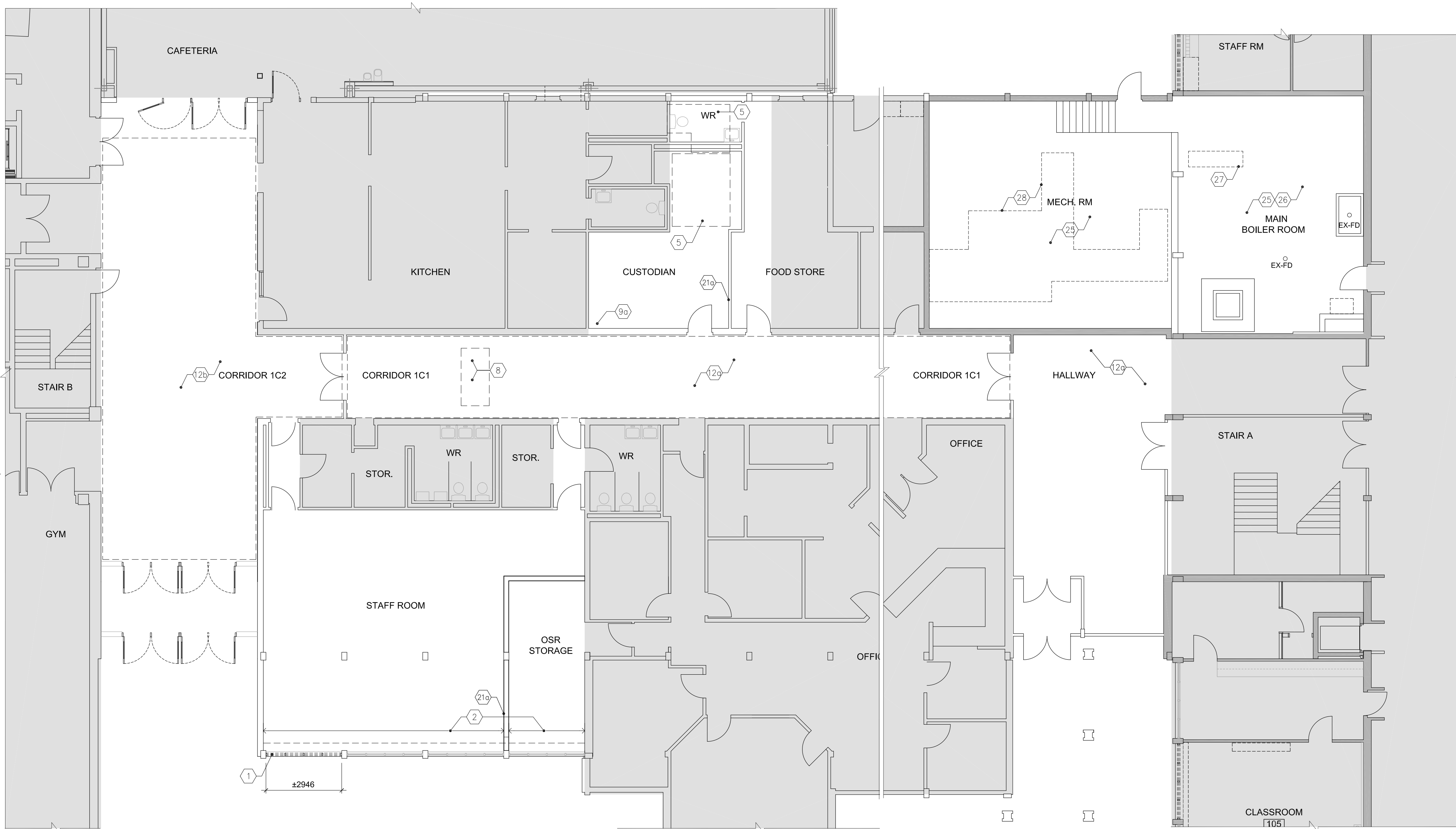
Scale:	Date: 12/04/2023
Drawn by:	Checked by:
Job No. 2323-2	Drawing No. A 000



A 101



2 FIRST FLOOR PARTIAL DEMOLITION PLAN (SECOND BOILER ROOM)
A200 1:100



1 FIRST FLOOR PARTIAL DEMOLITION PLAN (MAIN BOILER RM, CUSTODIAN RM, CORRIDORS AND STAFF RM)
A200 1:100

NOTE: CONTRACTOR TO REVIEW "DESIGNATED SUBSTANCE AND HAZARDOUS BUILDING MATERIALS ASSESSMENT" REPORT PREPARED BY MTE CONSULTANTS INC. REMOVAL OF ANY MATERIALS AS NOTED ON THE DEMOLITION DRAWINGS TO BE REMOVED & DISPOSED OF IN ACCORDANCE TO THIS REPORT & THE SPECIFICATION SECTION 02 82 09

DEMOLITION NOTES

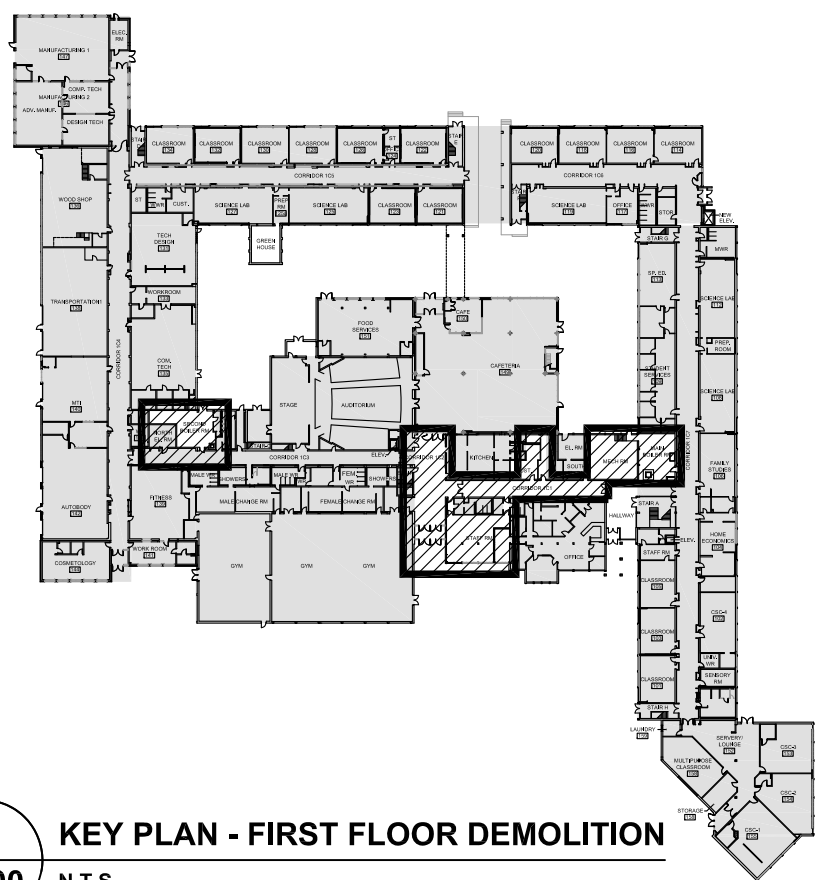
- | | |
|------------------|--|
| 1
BY
SC02 | REMOVE AND DISPOSE OF EXISTING WINDOW (±300mm x ±200mm) + FRAME WITH ASSOCIATED COMPONENTS ALONG WITH PLAM SILL TO CREATE NEW OPENING. COORDINATE WITH/STRUCT. MECH. & ELEC. DWGS FOR ADDITIONAL DEMOLITION SCOPE FOR WORK. MAKE GOOD AFTER DEMOLITION. TO RECEIVE NEW WORK.
MAKE OPENING WETHER TIGHT SCOPE BY SC01 |
| 1a
BY
SC01 | REMOVE AND DISPOSE OF EXISTING WINDOW PANE. MAKE GOOD AFFECTED SURFACES TO RECEIVE NEW MECH. LOUVER IN EXISTING WINDOW FRAME. |
| 2
BY
SC02 | REMOVE AND DISPOSE OF EXISTING RAD WITH ATTACHED COMPONENTS INCLUDING EXISTING TRIMS, MILL WORK, WOOD BLOCKING & INSULATION BEHIND. COORDINATE WITH MECH. & ELEC. DWGS FOR EXTENT & SCOPE OF ADDITIONAL DEMOLITION WORK. MAKE GOOD AFFECTED SURFACES. |
| 3
BY
SC03 | DRAIN, CUT BACK AND DISPOSE OF EXISTING SERVICE PIPES. CONNECT TO NEW AND REDIRECT INTERNAL PIPES TOWARDS NEW CHASE. COORDINATE WITH MECH. & ELEC. DWGS FOR EXTENT & SCOPE OF ADDITIONAL DEMOLITION WORK. MAKE GOOD AFFECTED SURFACES TO RECEIVE NEW WORK. |
| 5
BY
SC03 | DISCONNECT, REMOVE AND DISPOSE OF EXISTING CEILING HUNG MECH. UNIT WITH ATTACHED COMPONENTS. COORDINATE WITH MECH. & ELEC. DWGS FOR EXTENT & SCOPE OF ADDITIONAL DEMOLITION WORK. MAKE GOOD AFFECTED SURFACES. |
| 8
BY
SC07 | CUT AND DISPOSE OF EXISTING CONCRETE SLAB ROOF ASSEMBLY INCLUDING INSULATION, ROOFING MEMBRANE & ADHESIVE TO CREATE NEW OPENINGS (assume 6sq ft in area) FOR DUCT & SERVICE PIPE PENETRATIONS. COORDINATE WITH MECH & ELEC. DWGS FOR CORRECT SIZES & EXACT LOCATIONS. REFER TO STRUCTURAL DRAWINGS FOR SUPPORT FRAMING AROUND OPENINGS, MAKE GOOD (ALL TRADES). ALL SURFACES READY TO RECEIVE PROPOSED WORK. |

- | | |
|-------------------|---|
| 9
BY
SC07 | CUT AND DISPOSE OF EXISTING ROOF ASSEMBLY INCLUDING INSULATION, ROOFING MEMBRANE FOR INSTALLATION OF STRUCTURAL STEEL SUPPORT.
COORDINATE WITH STRUCT., & ARCH. DWGS FOR EXTENT & SCOPE OF ADDITIONAL DEMOLITION REQUIREMENTS. MAKE GOOD (ALL TRADES) ALL SURFACES READY TO RECEIVE PROPOSED WORK. |
| 9a
BY
SC07 | CUT AND DISPOSE OF EXISTING CONCRETE SLAB ROOF ASSEMBLY INCLUDING INSULATION, ROOFING MEMBRANE & ADHESIVE TO CREATE NEW SERVICE PIPE PENETRATION. COORDINATE WITH STRUCT., MECH./ELEC. DWGS FOR CORRECT SIZES & EXACT LOCATIONS. REFER TO STRUCTURAL DRAWINGS FOR SUPPORT FRAMING AROUND OPENINGS. MAKE GOOD (ALL TRADES) ALL SURFACES READY TO RECEIVE PROPOSED WORK. |
| 12
BY
SC04 | REMOVE AND DISPOSE OF EXISTING LIGHT FIXTURES AND ASSOCIATED DEVICES FROM EXPOSED CEILING. MAKE GOOD AFFECTED SURFACES. MECH./ELEC. DWGS FOR ADDITIONAL DEMOLITION SCOPE FOR WORK. |
| 12a
BY
SC02 | REMOVE AND DISPOSE OF ACT CEILING WITH ELECTRICAL FIXTURES AND OTHER DEVICES. MAKE GOOD AFFECTED SURFACES. COORDINATE W/STRUCT., MECH./ELEC. DWGS FOR ADDITIONAL DEMOLITION SCOPE FOR WORK. |
| 12b
BY
SC02 | REMOVE EXISTING CEILING TILES TO COMPLETE MECH. SERVICE CONNECTIONS. CAREFULLY STORE EXISTING ACT FIXTURES FOR REUSE. SUPPORT T-BAR WHERE NECESSARY. REMOVE EXISTING LIGHT FIXTURES, MECH. DIFFUSERS, AND GRILLS. COORDINATE W/ MECH. DWG FOR ADDITIONAL DEMO. SCOPE AND REQUIREMENTS. REINSTALL CEILING TILES AFTER COMPLETION OF MECH. SERVICES.
DEMOLITION WORK TO EXPOSED CLG COMPONENTS ARE ACCEPTABLE FOR REUSE. |

- | | |
|---------|--|
| 19 | DISCONNECT, REMOVE AND DISPOSE OF EXISTING FLOOR MOUNTED RACEWAYS WITH POWER OUTLETS. INCLUDE TO CUT, REMOVE AND DISPOSE OF EXISTING SERVICE CONNECTIONS BELOW / UNDER SLAB FIRST FLOOR. REFER TO MECH. DWGS FOR ADDITIONAL REQUIREMENTS. MAKE GOOD AFFECTED SURFACES. |
| BY SC04 | |
| 21 | CAREFULLY CUT, REMOVE AND CREATE AN OPENING (assume 4sq ft in area) FOR DUCT PENETRATION THROUGH EXISTING BLOCK WALL. COORDINATE WITH MECH DWGS FOR EXTENT & SCOPE OF ADDITIONAL DEMOLITION REQUIREMENTS CONNECTIONS. MAKE GOOD (ALL TRADES) ALL SURFACES READY TO RECEIVE PROPOSED WORK. |
| BY SC02 | |
| 21a | CAREFULLY CUT, REMOVE AND CREATE AN OPENING (assume 4sq ft in area) FOR SERVICE PENETRATION THROUGH EXISTING BLOCK WALL. COORDINATE WITH MECH DWGS FOR EXTENT & SCOPE OF ADDITIONAL DEMOLITION REQUIREMENTS CONNECTIONS. MAKE GOOD (ALL TRADES) ALL SURFACES READY TO RECEIVE PROPOSED WORK. |
| BY SC02 | |
| 25 | REFER TO MECHANICAL DWGS FOR BOILER ROOM DEMOLITION SCOPE. COORDINATE WITH MECH., ELEC. & STRUCT. DWGS FOR EXTENT & SCOPE OF ADDITIONAL DEMOLITION WORK. MAKE GOOD AFFECTED SURFACES. |
| BY SC03 | |
| 26 | CAREFULLY CUT EXISTING CONCRETE PAD / PLATFORM OF EXISTING MECH. EQUIPMENTS. ASSUME 10' LOCATIONS OF EXISTING MECH. EQUIPMENTS. COORDINATE WITH MECH. DWGS FOR EXTENT & SCOPE OF ADDITIONAL DEMOLITION WORK. MAKE GOOD AFFECTED SURFACES TO RECEIVE NEW FLOOR FINISH. |
| BY SC02 | |
| 27 | REMOVE AND DISPOSE OF EXISTING FLOOR TRENCH COVER. REFER TO MECH., ELEC. DWGS FOR ADDITIONAL REQUIREMENTS/ UNDER SLAB CONNECTIONS. MAKE GOOD (ALL TRADES) ALL SURFACES READY TO RECEIVE PROPOSED WORK. |
| BY SC02 | |
| 28 | CUT AND DISPOSE OF EXISTING SLAB/FLOOR TO CREATE TRENCH FOR NEW SERVICE CONNECTIONS. REFER TO MECH., ELEC. DWGS FOR ADDITIONAL REQUIREMENTS/ UNDER SLAB CONNECTIONS. MAKE GOOD (ALL TRADES) ALL SURFACES TO RECEIVE PROPOSED WORK. |
| BY SC02 | |

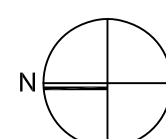
- 29** REMOVE AND DISPOSE OF EXISTING CHIMNEY WALL
BY ASSEMBLY (PROB. 5'5" x 42" HIGH INCLUDING ANY
SC02 ATTACHED COMPONENTS) ABOVE CLOTH DIAPHRAGM ROOM 2ND
 FLOOR ROOF IN MAIN BOILER RM. REFER TO
 STRUCTURAL, MECH. & ELEC. DWGS FOR ADDITIONAL
 REQUIREMENTS. MAKE GOOD (ALL TRADES) ALL
 SURFACES READY TO RECEIVE PROPOSED WORK.

30 REMOVE AND DISPOSE OF EXISTING CHIMNEY WALL
BY ASSEMBLY (PROB. 5'5" x 42" HIGH INCLUDING ANY
SC02 ATTACHED COMPONENTS) ABOVE SECOND BOILER RM
 ROOF IN SECOND BOILER RM. REFER TO STRUCTURAL,
 MECH. & ELEC. DWGS FOR ADDITIONAL REQUIREMENTS.
 MAKE GOOD (ALL TRADES) ALL SURFACES READY TO
 RECEIVE PROPOSED WORK.



A KEY PLAN - FIRST FLOOR DEMOLITION
A200 N.T.S.

Key Plan N.T.S.



Project Nor

[illegible]

General Contractor shall check and verify all dimensions and report all errors and omissions to the Architect. Do not scale the drawings. Drawings shall not be used for construction purposes until issued by the Architect for construction.

Drawing Title:

FIRST FLOOR PARTIAL DEMOLITION PLAN

Scale: 1:100 Date: 09/09/2024

Drawn by: MS | Checked by:

Job No.	Drawing No.
---------	-------------

2323-2

A 200





11c PATCH AND MAKE GOOD WITH NEW GYPSUM BOARD WALL
INFILL IN EXISTING WALL FOR NEW MECH. DUCT
PENETRATION

11c PATCH AND MAKE GOOD WITH NEW GYPSUM BOARD WALL
INFILL IN EXISTING WALL FOR NEW MECH. DUCT
PENETRATION



A KEY PLAN - FIRST FLOOR RENOVATION
A300 N.T.S.

1. INFORM ARCHITECT SITE CONDITIONS VARIED FROM DRAWING, CHECK FOR INTERFERENCE AND REVIEW CEILING HEIGHTS BEFORE INSTALLATION. INSTALL MECHANICAL UNITS, DUCTS & PIPING TIGHT TO WALLS. IN AREAS WITH EXPOSED STRUCTURE, DUCTS / PIPES AND CONDUITS SHALL BE MOUNTED TIGHT TO U/S OF SLAB OR DECK, ROUTED PARALLEL AND PERPENDICULAR TO WALLS.
2. PRIME & PAINT ALL CYCLOSPUM CEILING SURFACES.
3. PRIME & PAINT ALL EXPOSED STRUCTURE, DUCTS, PIPES & CONDUITS, UNO.
4. PROVIDE SHADOW MOLDING TYP. REFER TO TYPICAL DETAIL.
5. REFER TO TYPICAL DETAIL FOR DETAILS AT CEILING @ WINDOW MUD.
6. PROVIDE MEAL REVEAL TYP.FOR LOCATIONS OF DIFFUSERS,AIR GRILLES,SPEAKERS & EXIT LIGHTS, REFER TO MECHANICAL & ELEC. DWGS
7. INSTALL FIRE & SAFETY DEVICES IN CORRIDOR CEILING AS PER M&E DRAWING.

2 WALL SECTION AT EXISTING MAIN BOILER RM CHIMNEY
A500 1:20

Kalos Engineering Inc.
300 York Boulevard,
Hamilton, Ontario, L8R 3K6
Tel: 905-333-9119

1. ALL WINDOW OPENING SIZES TO BE SITE VERIFIED PRIOR TO MANUFACTURING.
2. ALL GLAZING ASSEMBLIES WITH SILL BELOW 1070mm FROM FINISHED FLOOR LEVEL, TO BE DESIGNED AS GUARD, PER OBC.
3. ALL EXTERIOR WINDOWS GLAZING, TO BE SEALED INSULATED GLASS UNIT 'SG-A' UNLESS NOTED OTHERWISE.
4. OPERABLE SASH - TRAVEL RESTRICTED, NOT TO PROJECT BEYOND FACE OF THE WALL.
5. ALL INDICATED LOUVERS (L-01 TO L-04) BE SUPPLIED AND INSTALLED AS A PART OF WINDOW ASSEMBLY.

A 700