

ELECTRICAL SPECIFICATION

GENERAL CONDITIONS

- THE CANADIAN STANDARD FORM OF CONSTRUCTION CONTRACT AND GENERAL CONDITIONS GOVERNING THE SAME CCDC PARTS 1 TO 12 INCLUSIVE ARE HEREBY MADE PART OF THIS SPECIFICATION.
- ALL WORK SHALL BE IN FULL ACCORDANCE WITH THE REQUIREMENTS OF THE 2018 ONTARIO ELECTRICAL SAFETY CODE, ELECTRICAL SAFETY AUTHORITY (ESA), AND THE LOCAL BUILDING INSPECTION DEPARTMENT REQUIREMENTS.
- ELECTRICAL CONTRACTOR SHALL INCLUDE FOR ESA INSPECTION FEES.
- THIS CONTRACTOR SHALL MAINTAIN LIABILITY INSURANCE AS REQUIRED.
- ALL WORKMANSHIP SHALL BE EXECUTED TO A STANDARD DETERMINED BY GOOD PRACTICE. THE ELECTRICAL CONTRACTOR SHALL GUARANTEE THE EQUIPMENT & INSTALLATION FOR ONE YEAR FROM SUBSTANTIAL COMPLETION.
- THE ELECTRICAL CONTRACTOR SHALL SUBMIT ONE SET OF ELECTRONIC PDF SHOP DRAWINGS TO THE ARCHITECT FOR REVIEW. SHOP DRAWINGS TO INCLUDE ALL ELECTRICAL EQUIPMENT, DEVICES & ULC LISTED FIRE STOPPING DETAILS. MATERIALS **SHALL NOT BE ORDERED** UNTIL REVIEW HAS BEEN COMPLETED. APPROVAL IS FOR GENERAL DESIGN COMPLIANCE ONLY.
- THE OWNERS RESERVE THE RIGHT TO ALTER THE LOCATION OF ANY ITEM UP TO TEN FEET (3m) WITHOUT INCURRING EXTRA COSTS, PROVIDED THE REQUEST IS MADE PRIOR TO INSTALLATION.
- ALL MATERIAL AND EQUIPMENT USED ON THIS PROJECT SHALL BE C.S.A. APPROVED, ESA FIELD EVALUATED, OR MUST BEAR AN ESA RECOGNIZED CERTIFICATION MARK.
- CUTTING AND PATCHING FOR ELECTRICAL WORK SHALL BE DONE BY THE GENERAL CONTRACTOR AT THE ELECTRICAL CONTRACTOR'S EXPENSE.
- THE CONTRACTOR SHALL VISIT THE SITE AND EXAMINE THE EXISTING CONDITIONS AND THEN MAKE NECESSARY ALLOWANCES IN THEIR TENDER PRICE FOR REMOVAL, RELOCATION, REROUTING AND/OR RECONNECTION OF EXISTING ELECTRICAL EQUIPMENT AND WIRING, AS MAY BE NECESSARY FOR THE EXECUTION AND COMPLETION OF THIS PROJECT. EXTRA CHARGES FOR PREMIUM TIME LABOUR SHALL BE INCLUDED IN THE TENDER PRICE, ALLOWING FOR AFTER HOURS, WEEKEND AND HOLIDAY LABOUR REQUIREMENTS.
- THE DRAWINGS AND SPECIFICATIONS SHALL BE READ IN CONJUNCTION WITH THE ARCHITECTURAL AND MECHANICAL DRAWINGS AND SPECIFICATIONS. ANY DISCREPANCIES OR CONTRADICTIONS SHALL BE BROUGHT TO THE CONSULTANT'S ATTENTION.
- THE ELECTRICAL REQUIREMENTS OF ALL MECHANICAL EQUIPMENT IS TO BE CONFIRMED WITH MECHANICAL DRAWINGS & SCHEDULES PRIOR TO RELATED WORK.
- ALL TEMPORARY LIGHTING AND POWER DURING CONSTRUCTION SHALL BE BY THE GENERAL CONTRACTOR AFTER AGREEMENT WITH THE ELECTRICAL CONTRACTOR. POWER SHALL BE PROVIDED FROM PANELS WITH REQUIRED SUPPLY AND CAPACITY.
- TENDER SHALL BE BASED UPON THE SPECIFIED EQUIPMENT AND MATERIAL. REQUESTS FOR CONSIDERATION OF ALTERNATES TO THE SPECIFIED MATERIALS SHALL BE MADE TO THE CONSULTANT ONE WEEK PRIOR TO TENDER CLOSING AND SHALL INCLUDE MANUFACTURER, MODEL, AND COST MODIFICATION. COSTS OF ANY CHANGE REQUIRED TO OTHER TRADES AS A RESULT OF USING ALTERNATE EQUIPMENT ARE TO BE INCURRED BY THE ELECTRICAL CONTRACTOR.
- ALL CLAIMS FOR EXTRA WORK NOT COVERED IN THE CONTRACT TO BE SUBMITTED WITH A COMPLETE BREAKDOWN OF MATERIALS AND LABOUR.
- DRAWINGS ARE NOT TO BE SCALED. ALL DIMENSIONS ARE TO BE TAKEN FROM THE ARCHITECTURAL DRAWINGS AND CONFIRMED ON SITE.
- PROVIDE FIRE STOPPING PROTECTION FOR OPENINGS THROUGH ALL FIRE RATED ASSEMBLIES. ULC LISTED ASSEMBLY NUMBERS ARE TO BE USED.
- LOW VOLTAGE CABLES (IE NETWORK, SECURITY, CONTROL, ETC...) ROUTED WITHIN PLENUM SPACES SHALL BE FTG, CMP OR PLENUM RATED WHEN ROUTING THROUGH MECHANICAL CEILING PLENUMS.

MOUNTING HEIGHTS

- DEVICE MOUNTING HEIGHT TO CENTRE OF DEVICE IS AS FOLLOWS:
 - LIGHT SWITCHES 1090mm (or 1200mm IN SERVICE ROOMS)
 - RECEPTACLE 400mm
 - DATA OUTLETS 400mm
 - THERMOSTATS 1400mm (or 1200mm BARRIER FREE PATH OF TRAVEL)
 - POWER DOOR OPERATORS 1000mm
 - FIRE ALARM BELL/HORN 2300mm
 - FIRE ALARM HORN/STROBE 2300mm
 - UNIVERSAL WASHROOM CONTROL 1000mm
 - UNIVERSAL WASHROOM AUDIBLE/VISUAL 2300mm
 - OTHER BUILDING CONTROLS 1000mm

COMMUNICATION SYSTEM

- THE ELECTRICAL CONTRACTOR SHALL PROVIDE AND INSTALL A COMPLETE EMPTY CONDUIT SYSTEM FOR COMMUNICATION OUTLETS AS SHOWN ON THE PLANS.
- PROVIDE CONDUIT AS PER LOW-VOLTAGE DEVICE SCHEDULE. CONDUIT TO BE METALLIC CONDUIT & FIRE STOPPED WHEN PENETRATING FIRE SEPARATIONS.
- PROVIDE NYLON PULL STRING IN ALL EMPTY CONDUITS.

LIGHTING

- SUPPLY AND INSTALL LIGHTING FIXTURES AND DEVICES AS NOTED ON THE PLANS AS PER THE MANUFACTURERS INSTALLATION INSTRUCTIONS.
- INSTALL ALL FIXTURES PARALLEL WITH BUILDING LINES UNLESS INDICATED OTHERWISE.
- FOR RECESSED FIXTURES (LED PUCK LIGHTS EXEMPTED) WITHIN SUSPENDED CEILINGS, PROVIDE EITHER:
 - SAFETY 'JACK CHAIN' TO BUILDING STRUCTURE, OR
 - MANUFACTURER APPROVED FASTENING DEVICES OR 'EARTHQUAKE CLIPS' FASTENED TO T-BAR.
- INSTALL A SEPARATE NEUTRAL CONDUCTOR FOR EACH LIGHTING BRANCH CIRCUIT.
- LIGHTING CONTROL WIRING NOT RUN WITHIN CONDUIT SHALL BE PLENUM RATED (FTG).

FIRE ALARM

- GENERAL:
- FIRE ALARM WIRING SHALL BE MINIMUM #18 AWG 300V FAS CABLE (WIRING TO BE SIZED BY FIRE ALARM VENDOR FOR VOLTAGE DROP) RUN AS FOLLOWS:
 - EXPOSED WALL: SURFACE WALL WIRING SHALL BE FAS WIRING IN SURFACE METAL WIREMOLD PAINTED TO MATCH WALL WHERE WIRING AND CONDUIT CANNOT BE RECESSED.
 - ACCESSIBLE CEILING SPACES, CONCEALED SPACES, FINAL DEVICE CONNECTIONS: ARMoured FAS CABLE
 - EXPOSED CEILING, RISER CLOSETS, SERVICE ROOMS: FAS WIRING IN EMT CONDUIT.
 - BELOW GRADE: FAS WIRING IN CONCRETE ENCASED PVC CONDUIT.
 - COMMISSIONING OF LIFE SAFETY SYSTEMS **SHALL BE INCLUDED** IN ELECTRICAL CONTRACTORS PRICE.
 - FIRE ALARM SYSTEM SHALL BE INSTALLED IN CONFORMANCE WITH CAN/ULC-5524-14, "INSTALLATION OF FIRE ALARM SYSTEMS".
 - FIRE ALARM SYSTEM SHALL BE VERIFIED IN CONFORMANCE WITH CAN/ULC-5537-13, "VERIFICATION OF FIRE ALARM SYSTEMS" BY A THIRD PARTY (ARMS LENGTH).
 - IF A FIRE ALARM OR VOICE COMMUNICATION SYSTEM OR ANY PART THEREOF IS SHUT DOWN:
 - THE FIRE DEPARTMENT AND BUILDING OCCUPANTS SHALL BE NOTIFIED, AND
 - IF APPLICABLE THE SUPERVISORY STAFF SHALL BE NOTIFIED, AND
 - POST NOTICES ON ALL FLOORS BY ELEVATORS AND AT ENTRANCES, STATING THE SCOPE OF WORK AND WHEN IT IS EXPECTED TO BE COMPLETED.
 - HAVE STAFF OR OTHER RELIABLE PERSON(S) PATROL THE AFFECTED AREA(S) AT LEAST ONCE EVERY HOUR. REFER TO CAN/ULC-5537-13(18) APPENDIX B - ALTERNATE MEASURES FOR OCCUPANT FIRE SAFETY.
 - WHERE EXISTING, UNLESS NOTED OTHERWISE, FIRE ALARM TO BE KEPT. THE ELECTRICAL CONTRACTOR TO INCLUDE ALL COSTS ASSOCIATED WITH RELOCATION OF ANY DEVICES OR EQUIPMENT.
 - NEW LIFE SAFETY DEVICES SHALL BE COMPATIBLE WITH THE EXISTING SYSTEM. WHERE EXISTING ZONE CIRCUITS ARE USED TO FEED NEW DEVICES, CONTRACTOR TO CONFIRM EXISTING INITIATING AND ANNUNCIATING ZONE WIRING IS COMPLETE WITH A BOND WIRE PRIOR TO RELATED WORK.

EXISTING CONDITIONS

- ELECTRICAL WORK AFFECTING OTHER TENANTS SHALL BE PERFORMED AFTER BUSINESS HOURS (EVENINGS AND WEEKENDS), COORDINATE WITH LANDLORD.
- SERVICE AND DISTRIBUTION SYSTEM POWER INTERRUPTIONS SHALL BE KEPT TO A MINIMUM. POWER INTERRUPTIONS MUST BE COORDINATED WITH THE OWNER AND ALL OTHER TRADES BY THIS CONTRACTOR. WRITTEN APPROVAL FOR ELECTRICAL INTERRUPTIONS MUST BE RECEIVED FROM THE OWNER INDICATING THE DATE, TIME AND ESTIMATED DURATION OF THE INTERRUPTION. APPLICATION FOR APPROVAL OF THE POWER INTERRUPTIONS MUST BE SUBMITTED TO THE OWNERS AND/OR ARCHITECTS AT LEAST TWO WEEKS PRIOR TO THE REQUESTED SHUTDOWN DATE.
- EXISTING ELECTRICAL EQUIPMENT, REMOVED AND INDICATED FOR REUSE, SHALL BE CLEANED BEFORE RE-INSTALLATION.
- WIRING LOCATED IN AREAS BEING ALTERED OR DEMOLISHED, BUT FEEDING OUTLETS OR EQUIPMENT REQUIRED TO REMAIN IN SERVICE, MUST BE REWORKED IN ORDER TO MAINTAIN THE CONTINUITY OF THE EXISTING WIRING.
- REPAIRS TO EXISTING WALLS, FLOORS AND CEILINGS ARE TO BE PERFORMED BY THE GENERAL CONTRACTOR TO MEET THE EXISTING CONDITIONS.
- SEQUENCE OF REMOVAL AND RELOCATION OF EXISTING EQUIPMENT AND WIRING SHALL BE COORDINATED WITH THE OTHER TRADES AND SHALL CONFORM TO THE REQUIREMENTS AND CONDITIONS OUTLINED.
- THE CONTRACTOR SHALL PROVIDE ADEQUATE PROTECTION TO EXISTING WIRING AND EQUIPMENT THROUGHOUT THE PROJECT, PARTICULARLY WHERE WIRING AND ELECTRICAL EQUIPMENT HAVE BECOME EXPOSED TO MECHANICAL DAMAGE OR MOISTURE IN THE COURSE OF ALTERATIONS OR NEW CONSTRUCTION.
- NEW OUTLETS AND EQUIPMENT SHOWN IN THE SAME LOCATION AS EXISTING OUTLETS MAY BE FED THROUGH THE EXISTING CONDUITS/WIRING, PROVIDED THAT THEY ARE IN GOOD CONDITION AND ARE ACCEPTABLE TO THE ESA INSPECTION DEPARTMENT.

DEMOLITION

- ALL EXISTING ELECTRICAL EQUIPMENT, WIRING, AND ROUGH-IN DEVICES ARE TO BE REMOVED COMPLETE TO SUIT THE DEMOLITION AND RENOVATION OF THE SPACES. ALL EXISTING ELECTRICAL EQUIPMENT, NOT BEING REUSED, SHALL BECOME THE PROPERTY OF THE OWNER. ELECTRICAL CONTRACTOR SHALL PROPERLY DISPOSE OF EQUIPMENT NOT DESIRED BY OWNER.
- ALL DEVICES & EQUIPMENT MADE OBSOLETE SHALL BE REMOVED FROM THE CONSTRUCTION SITE.

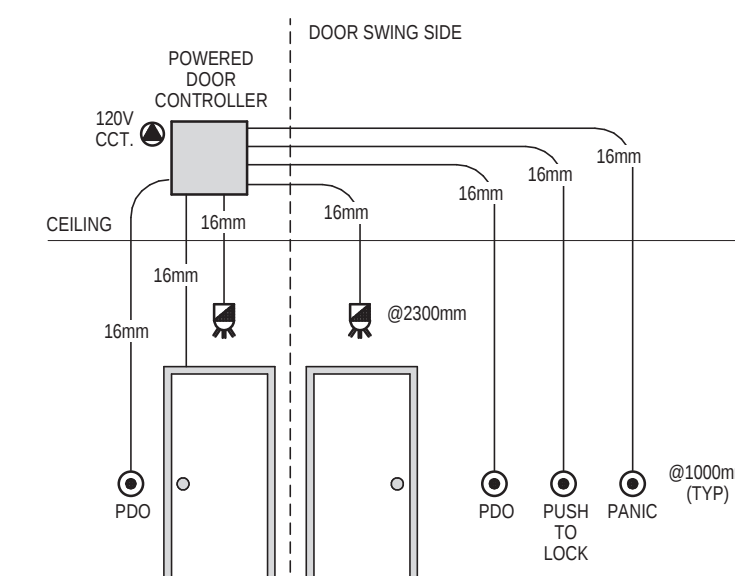
GENERAL CLOSE OUT PROCEDURES

- DOCUMENTS:** ELECTRICAL CONTRACTOR TO SUBMIT:
 - FIRE ALARM SYSTEM ULC 5537-13 VERIFICATION REPORT (INCLUDING DEVICE & AUDIBILITY REPORT).
 - ESA CERTIFICATE OF INSPECTIONS.
 - SIGNED COPY OF EMERGENCY LIGHTING TEST REPORT. EMERGENCY LIGHTING TEST REPORT TO INDICATE TOTAL RUNTIME OF EMERGENCY LIGHTING ONCE NORMAL POWER IS LOST FOR EACH BATTERY SYSTEM. (MINIMUM 30MIN AS PER OBC.3.2.7.4(1b))
- TRAINING:** ELECTRICAL CONTRACTOR SHALL PROVIDE TRAINING SESSIONS TO THE OWNER ON ALL MAJOR ELECTRICAL SYSTEMS.
- COMMISSIONING:** ALL MAJOR SYSTEMS ARE TO BE COMMISSIONED BY THE MANUFACTURERS REPRESENTATIVE INCLUDING FIRE ALARM, LIGHTING CONTROL SYSTEMS.
- FUNCTIONAL TESTING** (AT CONTRACTOR'S EXPENSE):
 - LIGHTING CONTROL SYSTEM TESTING SHALL INCLUDE OCCUPANCY SENSOR PLACEMENT, SENSITIVITY, AND CONTROL SETTING CALIBRATION. PROPERLY OPERATING OCCUPANCY SENSORS ARE TO TURN OFF LIGHTS WITHIN A REASONABLE PERIOD OF TIME IN UNOCCUPIED SPACES AND SHALL NOT ALLOW LIGHTS TO TURN ON UNLESS SPACE IS OCCUPIED. CONFIRM ALL TIME SWITCHES AND PROGRAMMABLE SCHEDULE CONTROLS ARE PROGRAMMED TO TURN THE LIGHTS OFF. COORDINATE WITH MECHANICAL, HVAC SYSTEM TO BE ON DURING TESTING.
 - RECORD DRAWINGS:** ELECTRICAL CONTRACTOR SHALL PROVIDE RECORD DRAWINGS OF ACTUAL INSTALLATION TO OWNERS WITHIN 30 DAYS OF SYSTEM ACCEPTANCE. DRAWINGS ARE TO INCLUDE SINGLE LINE DIAGRAM OF DISTRIBUTION SYSTEM; FLOOR PLANS SHOWING THE LOCATION OF DISTRIBUTION EQUIPMENT AND THE AREAS SERVED BY THAT EQUIPMENT; CHANGES TO LIGHTING, LIGHTING CONTROLS & CIRCUITING.

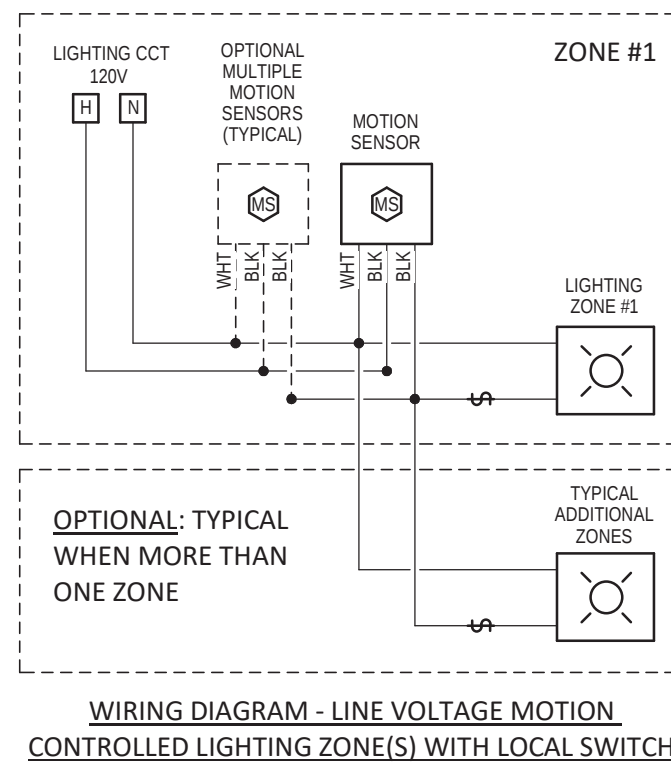
INSPECTIONS BY CONSULTANT

- CONTRACTOR SHALL NOTIFY CONSULTANTS WHEN INSPECTIONS ARE REQUIRED. ALLOW FOR MINIMUM OF THREE BUSINESS DAYS OF NOTICE PRIOR TO INSPECTION.
- INSPECTIONS ARE REQUIRED AT THE FOLLOWING MILESTONES:
 - FINAL INSPECTION

Sheet #	Sheet Name
E1	Electrical Legend & Specification
E2	Demo - Electrical Plan
E3	Proposed Electrical Plan
E4	Schedules
Total: 4	

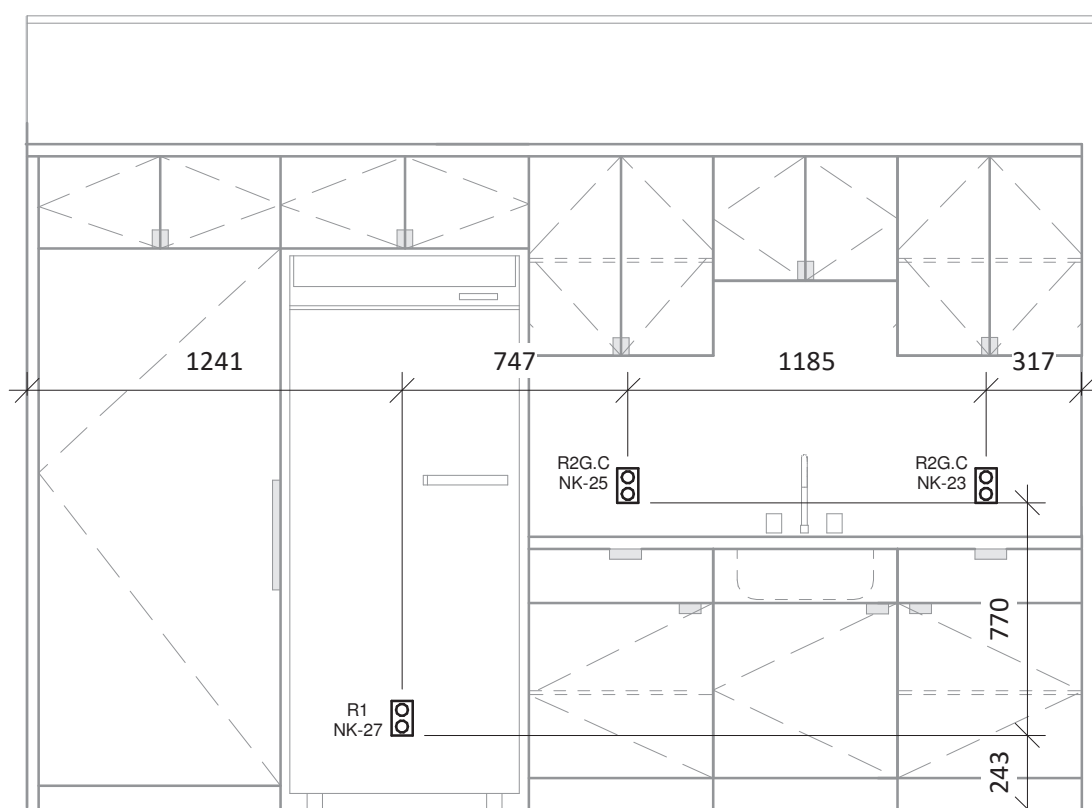


- PROVIDE BACKING BOX & 16mm EMT FROM EACH DEVICE TO POWER DOOR CONTROLLER. COORDINATE WITH CONTROLLER PROVIDER.
- 16mm EMT TO DOOR HEADER, PULL STRING TO ELECTRIC STRIKE.
 - PDO BUTTON OUTSIDE DOOR SWING AS SHOWN ON PLAN.
 - PDO BUTTON ON DOOR SWING SIDE, BETWEEN 600mm & 1500mm FROM DOOR SWING
 - ASSISTANCE REQUESTED SOUNDER, OUTSIDE & INSIDE
 - PUSH TO LOCK
 - EMERGENCY PANIC BUTTON
 - PULL STRING IN ALL CONDUITS
 - DOOR CONTROLS TO BE RECESSED WHERE POSSIBLE.
 - SURFACE MOUNTED ON FIRE SEPARATIONS.



WIRING DIAGRAM - LINE VOLTAGE MOTION CONTROLLED LIGHTING ZONE(S) WITH LOCAL SWITCHED

#	NOTE
L1	REWORK NEW LIGHTING CONTROL TO EXISTING LIGHTING CIRCUIT.
P3	CIRCUITING COMPLETED USING CIRCUITS MADE AVAILABLE DURING DEMOLITION. CONFIRM ACTUAL CIRCUITS AVAILABLE ON SITE.
P5	REWORK NEW RECEPTACLE ONTO EXISTING RECEPTACLE CIRCUIT MADE AVAILABLE DURING DEMOLITION.
P6	PROVIDE A DEDICATED CIRCUIT FOR NEW HANDDRYER. REWORK EXISTING 15A CIRCUIT BREAKER MADE AVAILABLE DURING DEMOLITION.



Classroom Millwork
1 : 25

DEVICE/EQUIPMENT OPTIONS & TAGS

CL	CEILING MOUNT
FL	FLOOR MOUNT
GFI	DEVICE WIRED TO LOAD SIDE OF GFCI RECEPTACLE/BREAKER
RP	REPLACE EXISTING DEVICE WITH NEW DEVICE IN SAME LOCATION.
REL	RELOCATED DEVICE/EQUIPMENT. REWORK WIRING AS NEEDED. IF APPLICABLE PROVIDE NEW DEVICE BOX & CONNECTORS.

- NEW DEVICE/EQUIPMENT
- TO BE REMOVED
- EXISTING TO REMAIN

1 New, Removed, Existing

- RS-2 ← EQUIPMENT TYPE ID (AS PER MECHANICAL EQUIPMENT SCHEDULE)
- A-4/G8 ← EQUIPMENT CIRCUIT
- @1800mm AFF ← EQUIPMENT SPECIFIC DETAILS.
- ← EQUIPMENT SYMBOL (VARIES)

2 Tags - Mechanical Equipment

- 27S ← DEVICE TYPE ID (AS PER LOW VOLTAGE DEVICE SCHEDULE)
- TV@1800mm ← DEVICE SPECIFIC MOUNTING INSTRUCTIONS
- ← DEVICE SYMBOL (VARIES)

DEVICES WITH UNIQUE SYMBOL & TYPE MAY NOT HAVE A TYPE ID. DEVICES MOUNTED BESIDE COUNTER HEIGHT ELECTRICAL DEVICES ARE TO ALSO BE MOUNTED AT COUNTER HEIGHT.

3 Tags - Low Voltage Devices

- RS-2 ← DEVICE TYPE ID (AS PER ELECTRICAL DEVICE SCHEDULE)
- A-4 ← DEVICE CIRCUIT
- TV@1800mm ← DEVICE SPECIFIC DETAILS
- ← DEVICE SYMBOL (VARIES)

4 Tags - Electrical Devices

- V1 ← DEVICE TYPE ID (AS PER LIGHTING CONTROL DEVICE SCHEDULE)
- (Z1.1) ← LIGHTING CONTROL ZONE ID
- 0-10V ← 0-10V WIRING REQUIRED BETWEEN CONTROL DEVICE AND ALL LIGHTING FIXTURES WITHIN THE SAME CONTROL ZONE.
- A-4 ← CIRCUIT # USED FOR ZONE
- ← DEVICE SYMBOL (VARIES)

5 Tags - Lighting Devices

ELECTRICAL LEGEND

SCHEDULE (x = TYPE)	EXISTING	DEMO	NEW	DESCRIPTION
LIGHTING DEVICE SCHEDULES	\$	\$	\$x	LIGHT SWITCH
	⊕	⊕	⊕x	DIMMER SWITCH
	⊕	⊕	⊕x	LIGHTING MOTION SENSOR
	⊕	⊕	⊕x	LIGHTING POWER PACK
	⊕	⊕	⊕x	LIGHTING TIME CLOCK
LIGHTING FIXTURE SCHEDULES	⊕	⊕	⊕x	LIGHTING CONTACTOR
	⊕	⊕	⊕x	EXIT SIGN, CEILING MOUNT, HATCH = SIGN, ARROW = DIRECTION
	⊕	⊕	⊕x	EXIT SIGN, WALL MOUNT, HATCH = SIGN, ARROW=DIRECTION
	⊕	⊕	⊕x	EXIT / EMERG COMBO, WALL MOUNT, HATCH=SIGN, ARROW=DIRECTION
	⊕	⊕	⊕x	EMERGENCY LIGHT, BATTERY UNIT
ELECTRICAL EQUIPMENT SCHEDULES	⊕	⊕	⊕x	EMERGENCY LIGHT, REMOTE HEAD
	⊕	⊕	⊕x	LIGHTING FIXTURE
	⊕	⊕	⊕x	WALL MOUNTED LIGHTING FIXTURE
	⊕	⊕	⊕x	LIGHTING FIXTURE
	⊕	⊕	⊕x	LIGHTING JUNCTION BOX
MECHANICAL EQUIPMENT SCHEDULES	⊕	⊕	⊕x	ELECTRICAL POWER PANEL
	⊕	⊕	⊕x	ELECTRICAL DISCONNECT (FUSED OR UNFUSED)
	⊕	⊕	⊕x	ELECTRICAL EQUIPMENT - MISCELLANEOUS
	⊕	⊕	⊕x	MECHANICAL EQUIPMENT CONTROL
	⊕	⊕	⊕x	MECHANICAL EQUIPMENT - HARDWIRE CONNECTION
ELECTRICAL DEVICE SCHEDULES	⊕	⊕	⊕x	MECHANICAL EQUIPMENT c/w LOCAL DISCONNECT
	⊕	⊕	⊕x	#6 AWG CU TO BUILDING GROUND
	⊕	⊕	⊕x	HARDWIRE CONNECTION
	⊕	⊕	⊕x	DUPLEX RECEPTACLE 15A
	⊕	⊕	⊕x	DUPLEX RECEPTACLE 15A - COUNTER (100mm ABOVE BACKSPLASH)
LOW VOLTAGE DEVICE SCHEDULES	⊕	⊕	⊕x	DUPLEX RECEPTACLE 20A
	⊕	⊕	⊕x	DUPLEX RECEPTACLE 20A - COUNTER (100mm ABOVE BACKSPLASH)
	⊕	⊕	⊕x	SPECIAL RECEPTACLE
	⊕	⊕	⊕x	DATA OUTLET
	⊕	⊕	⊕x	PUSHBUTTON (BOX & 16mm EMT TO ACCESSIBLE CEILING SPACE)
FIRE ALARM DEVICE SCHEDULES	⊕	⊕	⊕x	UNIVERSAL WASHROOM: ASSISTANCE REQUESTED AUDIBLE VISUAL SIGNAL
	⊕	⊕	⊕x	COMMUNICATION BACKBOARD - PLYWOOD GOOD ONE SIDE
	⊕	⊕	⊕x	SOUND SPEAKER
	⊕	⊕	⊕x	SMOKE ALARM
	⊕	⊕	⊕x	FIRE ALARM MANUAL PULL STATION
⊕	⊕	⊕x	FIRE ALARM STROBE (z = CANDELA, 15cd DEFAULT)	
⊕	⊕	⊕x	FIRE ALARM SMOKE DETECTOR	
⊕	⊕	⊕x	FIRE ALARM HEAT DETECTOR	
⊕	⊕	⊕x	FIRE ALARM BELL	
⊕	⊕	⊕x	POLYCARBONATE COVER WITH ALARM OVER MANUAL PULL STATION	
⊕	⊕	⊕x	FIRE ALARM END OF LINE RESISTOR	

PANEL: PP-NK

Location: Supply From: Mounting: Recessed Enclosure: Type 1
Volts: 208/120 WYE Phases: 3 Wires: 4
A.I.C. Rating: Mains Type: MLO Mains Rating: 400 A MCB Rating: 250 A

Notes:
Existing Eaton PRL1a

CKT	Circuit Description	Trip	Poles	A B C	Poles	Trip	Circuit Description	CKT
NK-1	UV#13	30 A	3		3	30 A	UV#14	NK-2
NK-3								NK-4
NK-5								NK-6
NK-7								NK-8
NK-9	UV#15	30 A	3		3	30 A	UV#16	NK-10
NK-11								NK-12
NK-13								NK-14
NK-15	UV#17	30 A	3		3	30 A	UV#18	NK-16
NK-17								NK-18
NK-19	FFH-5	20 A	2		1	15 A	Roof Service Plug	NK-20
NK-21								NK-22
NK-23	Classroom 002 - Counter Rec 1	20 A	1		2	15 A	BOYS WR 001 - CFH.1	NK-24
NK-25	Classroom 002 - Counter Rec 2	20 A	1		1	15 A	Boys WR Hand Dryer	NK-26
NK-27	Classroom 002 - Fridge	15 A	1		1	15 A	Boys WR Hand Dryer	NK-28
NK-29	Classroom 002 - Projector	15 A	1		1	20 A	Boys WR Rec	NK-30
NK-31	Quiet RM 003 - Rec	15 A	1					NK-32
NK-33								NK-34
NK-35	Classroom 002 - CFH.1	20 A	2					NK-36
NK-37	UNIV & BOYS WR - EF 2 & 3	15 A	1					NK-38
NK-39								NK-40

Notes:

THIS DRAWING IS AN INSTRUMENT OF SERVICE & IS THE PROPERTY OF ROOTS ENGINEERING AND CANNOT BE MODIFIED AND/OR REPRODUCED WITHOUT THE PERMISSION OF ROOTS ENGINEERING LTD.

THE CONTRACTOR MUST VERIFY ALL DIMENSIONS ON SITE AND REPORT ANY DISCREPANCIES TO THE ENGINEER, BEFORE PROCEEDING WITH THE WORK.
DRAWINGS ARE NOT TO BE SCALED.



NO.	DESCRIPTION	DATE
5	Issued For Tender	Feb 13, 2025
4	Reissued For Permit	Feb 05, 2025
3	Reissued For Permit	Feb 03, 2025
2	Issued For Permit	Dec 23, 2024
1	Issued For Review	Nov 12, 2024

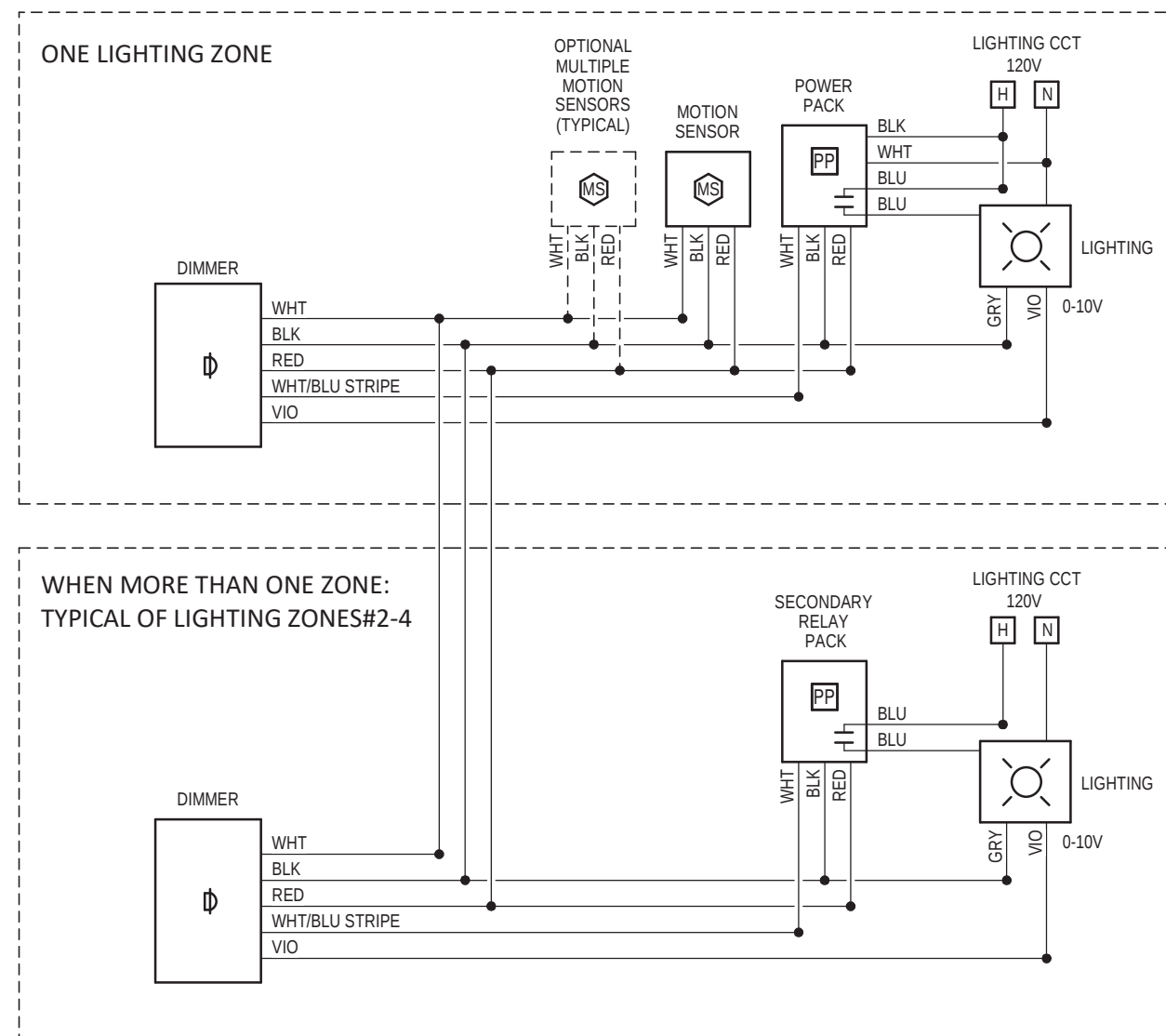
NO.	DESCRIPTION	DATE
REVISION SCHEDULE		

ROOT3 Engineering
1920 YONGE ST., SUITE 200
TORONTO, ON, M4S 3E2

PROJECT NAME
Oakwood Public School
357 Bartos Dr,
Oakville City, ON

DRAWING TITLE
Electrical Legend & Specification

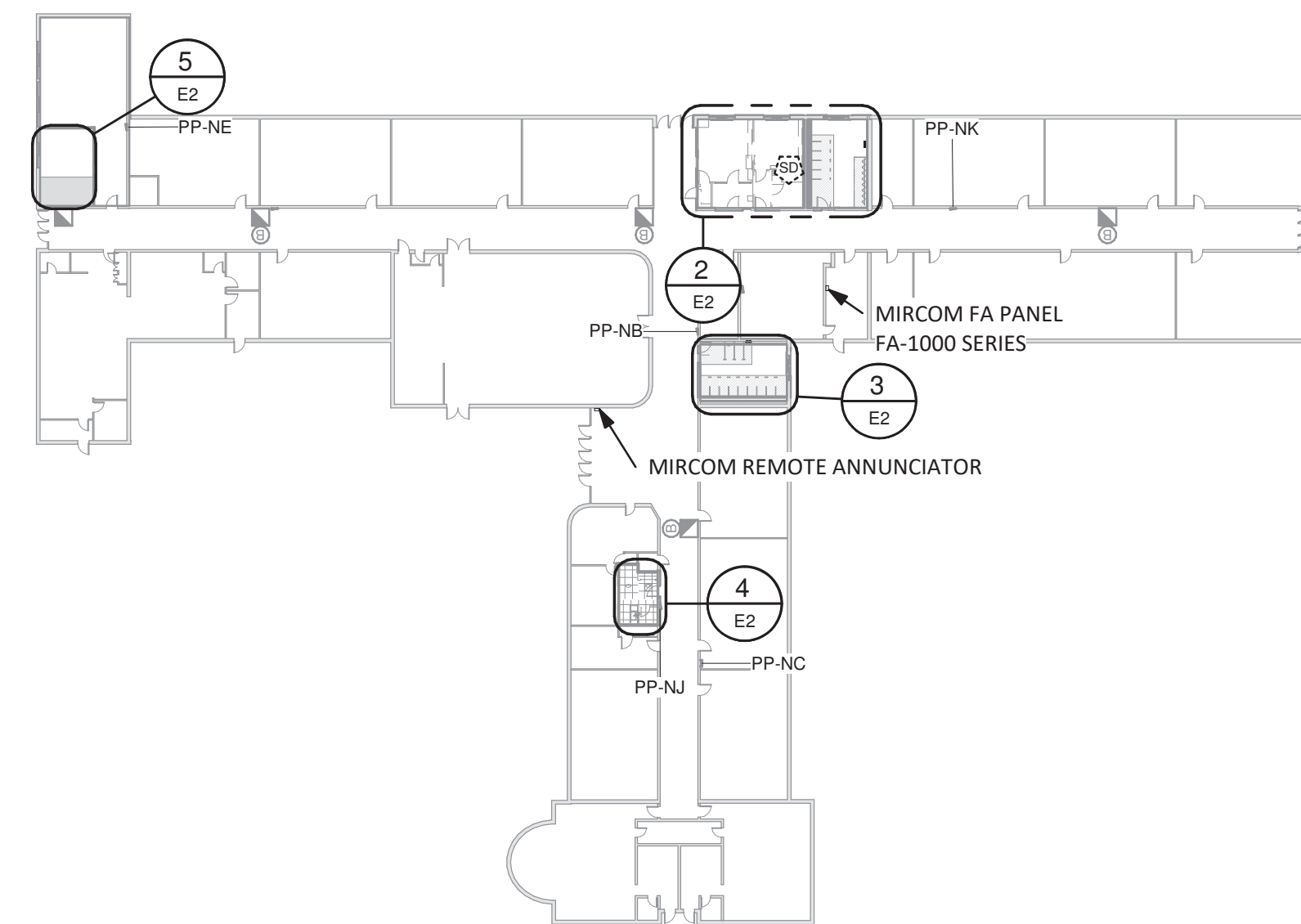
SCALE	DRAWING NUMBER
As indicated	E1
SHEET SIZE 24"x36"	
PROJECT NUMBER 24028	



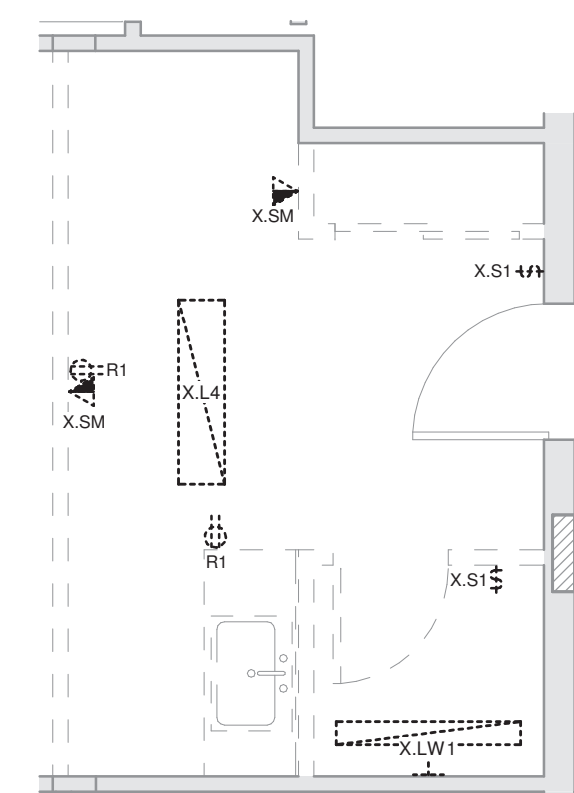
WIRING DIAGRAM FOR UP TO 4 DIMMABLE MOTION CONTROLLED LIGHTING ZONES

EACH LIGHTING ZONE IS CONTROLLED BY ITS OWN DIMMER SWITCH. MOTION SENSORS FROM ALL ZONES DETERMINE OCCUPANCY. MULTIPLE MOTION SENSORS PER ZONE MAY BE USED TO INCREASE COVERAGE. DIMMER TYPE DETERMINES AUTO-ON OR MANUAL-ON, AS PER SCHEDULE.

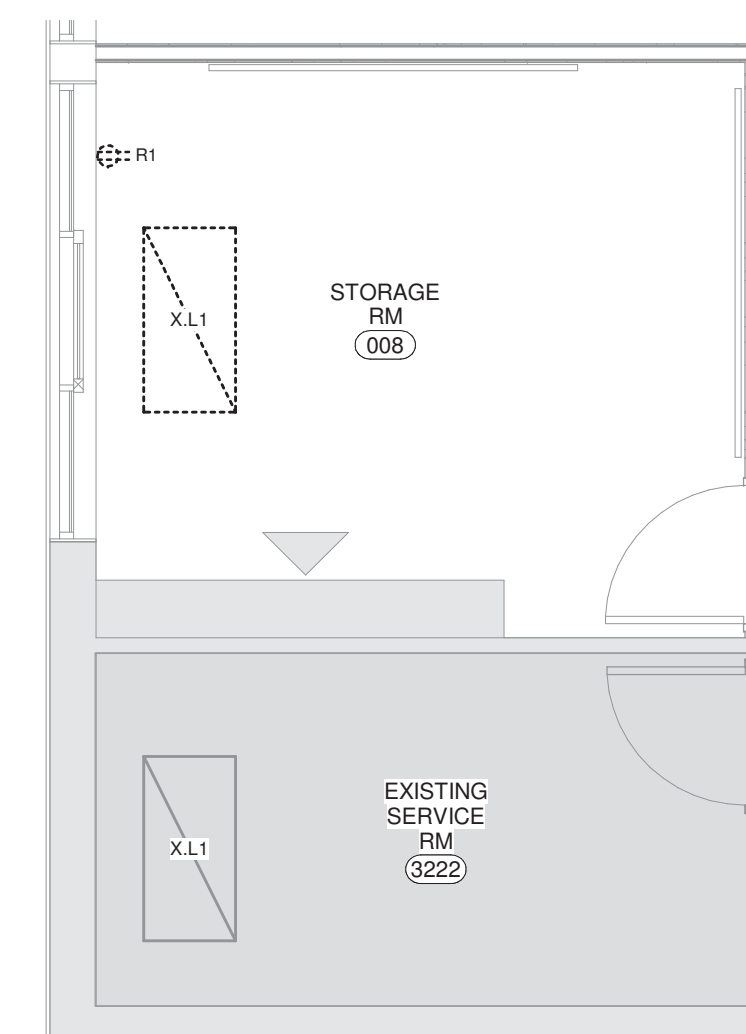
7 One Or More Dimming Zones



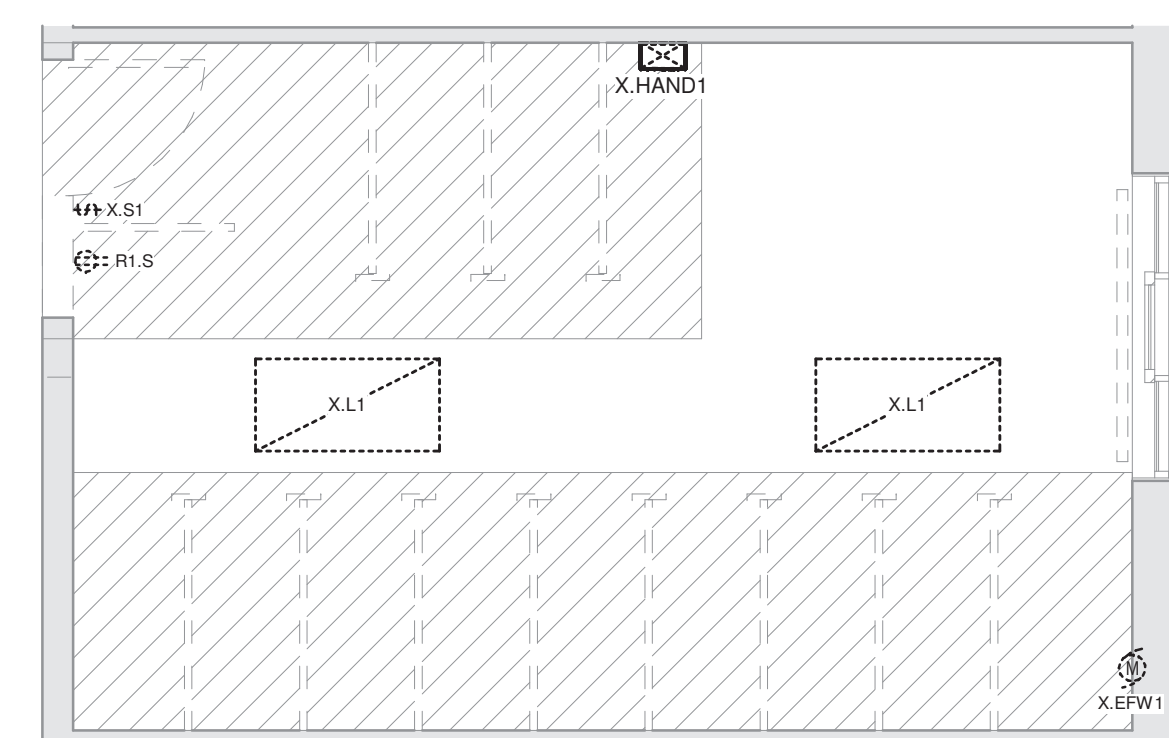
1 Demolition - Area Keymap
1 : 500



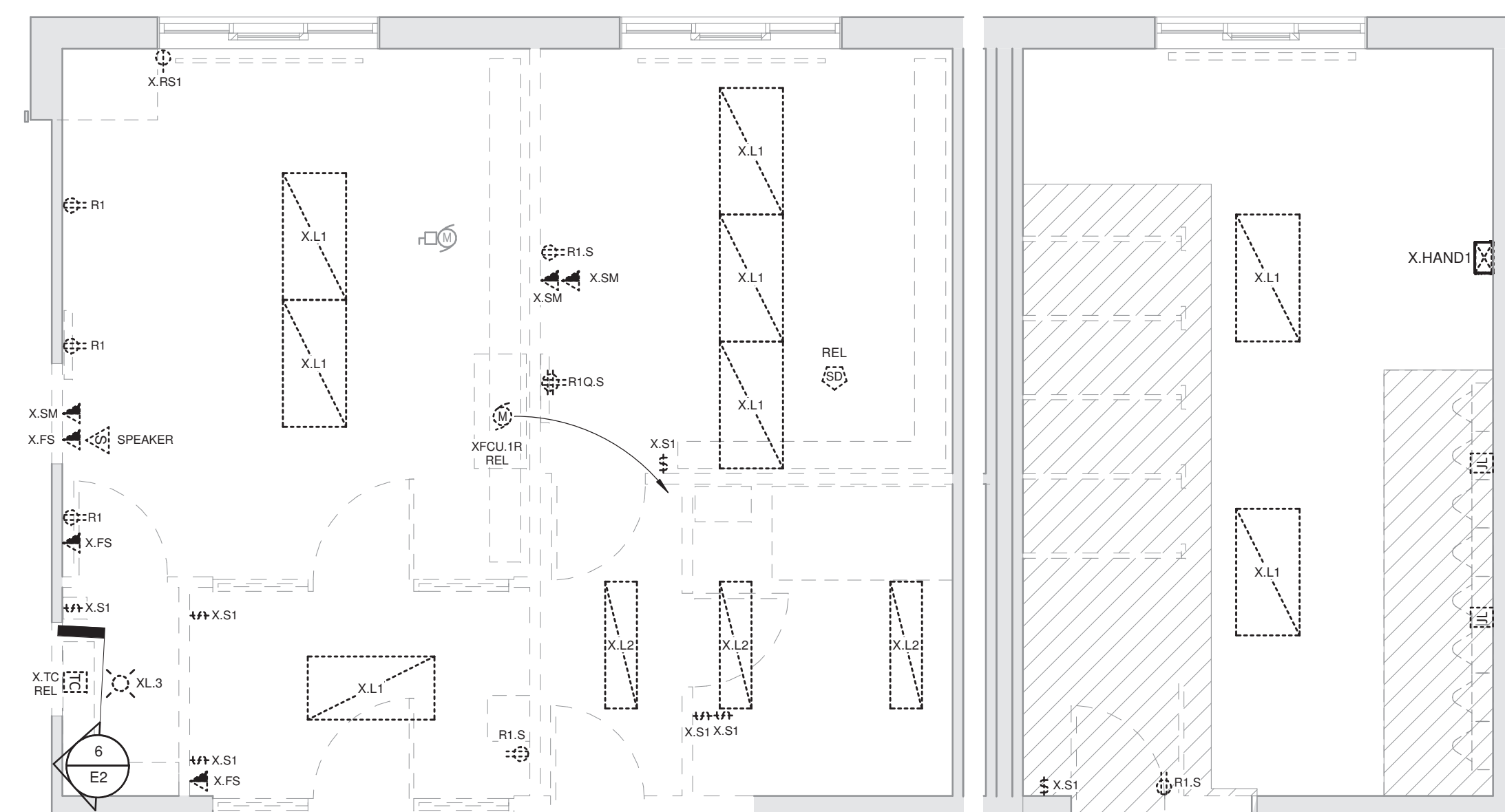
4 Demo - Washroom
1 : 50



5 Demo - Storage & Existing Service RM
1 : 50



3 Demo - Girl's Washroom
1 : 50



2 Demo - Classroom & Boy's WR
1 : 50



6 Existing Time Clock

THIS DRAWING IS AN INSTRUMENT OF SERVICE & IS THE PROPERTY OF ROOT3 ENGINEERING AND CANNOT BE MODIFIED AND/OR REPRODUCED WITHOUT THE PERMISSION OF ROOT3 ENGINEERING LTD.
THE CONTRACTOR MUST VERIFY ALL DIMENSIONS ON SITE AND REPORT ANY DISCREPANCIES TO THE ENGINEER, BEFORE PROCEEDING WITH THE WORK.
DRAWINGS ARE NOT TO BE SCALED.



5	Issued For Tender	Feb 13, 2025
4	Reissued For Permit	Feb 05, 2025
3	Reissued For Permit	Feb 03, 2025
2	Issued For Permit	Dec 23, 2024
1	Issued For Review	Nov 12, 2024

NO.	DESCRIPTION	DATE
REVISION SCHEDULE		



1920 YONGE ST, SUITE 200
TORONTO, ON, M4S 3E2

PROJECT NAME
Oakwood Public School
357 Bartos Dr,
Oakville City, ON

DRAWING TITLE
Demo - Electrical Plan

SCALE	As indicated	DRAWING NUMBER
SHEET SIZE	24"x36"	E2
PROJECT NUMBER	24028	

PANEL: PP-NJ

Location: Supply From: Mounting: Recessed Enclosure: Type 1
 Volts: 208/120 WYE Phases: 3 Wires: 4
 A.I.C. Rating: Mains Type: MLO Mains Rating: 400 A MCB Rating: 250 A

Notes:
 Existing EATON PRL1a 400A Panel

CKT	Circuit Description	Trip	Poles	A B C	Poles	Trip	Circuit Description	CKT
NJ-1								NJ-2
NJ-3	UV#7 - Room#14	30 A	3		3	30 A	UV#8 - Room#12	NJ-4
NJ-5								NJ-6
NJ-7								NJ-8
NJ-9	UV#9 - Room#13	30 A	3		3	30 A	UV#10 - Room#11	NJ-10
NJ-11								NJ-12
NJ-13								NJ-14
NJ-15	UV#11 - Room#10	30 A	3		3	30 A	UV#12 - Room#9	NJ-16
NJ-17								NJ-18
NJ-19	FCU-2/CU-2	30 A	2		1	15 A	FFH-6, FFH-7	NJ-20
NJ-21							Roof Service Plug	NJ-22
NJ-23	FFH-1, FFH-2	15 A	1		1	20 A		NJ-24
NJ-25	Photo Copier	20 A	1					NJ-26
NJ-27	General Cleaning - Rec	20 A	1					NJ-28
NJ-29	Exhaust Fan	15 A	1					NJ-30
NJ-31								NJ-32
NJ-33								NJ-34
NJ-35								NJ-36
NJ-37								NJ-38
NJ-39								NJ-40

Notes:
 HATCH SHOWS EXISTING TO REMAIN

PANEL: PP-NB

Location: Supply From: Mounting: Recessed Enclosure: Type 1
 Volts: 208/120 WYE Phases: 3 Wires: 4
 A.I.C. Rating: 10kAIC Mains Type: MLO Mains Rating: 200 A MCB Rating:

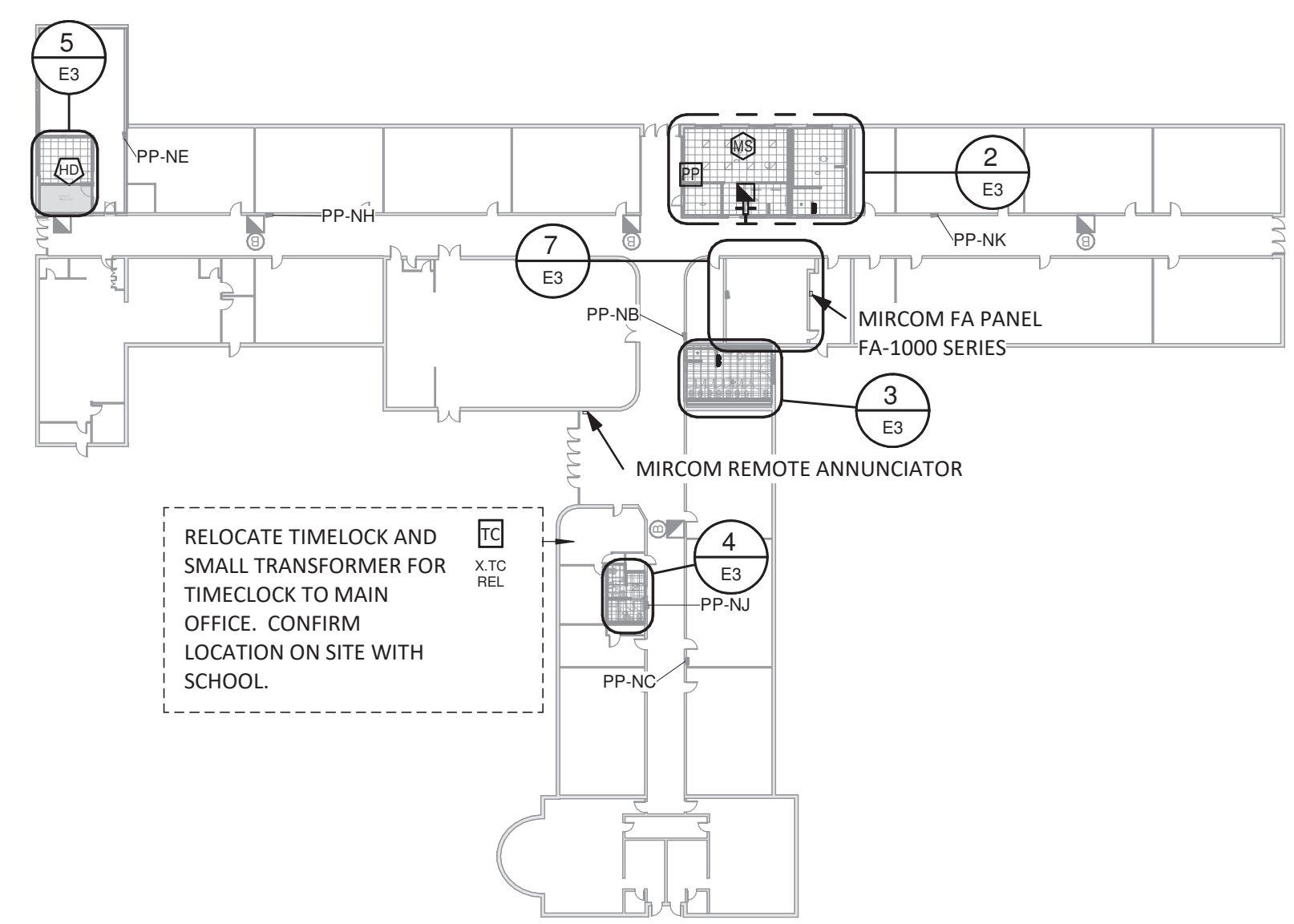
Notes:
 Existing EATON PRL1A Panel

CKT	Circuit Description	Trip	Poles	A B C	Poles	Trip	Circuit Description	CKT
NB-1	Door Operator	15 A	1		1	15 A	A: RM#14 Rec / B: RM#14 Lights	NB-2
NB-3	Kitchen Rec	15 A	1		2	15 A	Heater	NB-4
NB-5	Kitchen Rec	15 A	1					NB-6
NB-7	RM, #1 Rec	15 A	1		1	15 A	A: RM#14 Lights / B: Hall Lights	NB-8
NB-9	Cust/Rec Igl/PHONE SYS	15 A	1		1	15 A	Gym Exhaust Fan	NB-10
NB-11	RM 23/ Hall Lights	15 A	1		1	15 A	Hall Lights	NB-12
NB-13	Kitchen Rec	15 A	1		1	15 A	Master Clock RM#23 Ltg	NB-14
NB-15	RM#5 Laminator	15 A	1		1	15 A	Hall Lights	NB-16
NB-17	RM#5 Computer Rec	15 A	1		1	15 A	Boy's WR RM#23 Ltg	NB-18
NB-19	Computer Hub LEAVE ON	15 A	1		1	15 A	Rec RM#14	NB-20
NB-21	Boy's WR Hand Dryer/Rec	20 A	1		1	15 A	Principals Office AC	NB-22
NB-23	Girl's WR Hand Dryer/Rec	20 A	1		1	15 A	Washroom Fan	NB-24
NB-25	A: Unknown / B: Girl's WR LTS & Fan	15 A	1		1	15 A	Girl's WR Rec	NB-26
NB-27								NB-28
NB-29	Kitchen Panel	40 A	2		2	40 A	Rec Principal Entrance Way	NB-30

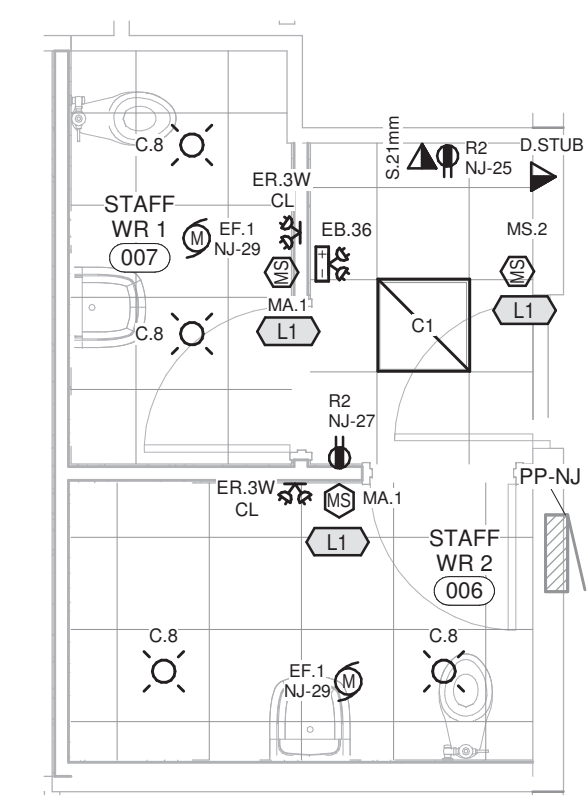
Notes:
 HATCH SHOWS EXISTING TO REMAIN. EXISTING PANEL IS FULL. PROVIDE TANDEM MINI BREAKER AS INDICATED ABOVE. REMOVE EXISTING 1P-15A CIRCUIT BREAKER IN CCT 2 & 8, REWORK EXISTING CIRCUIT TO NEW TANDEM MINI BREAKERS CCT A & CCT B.

Sheet Notes

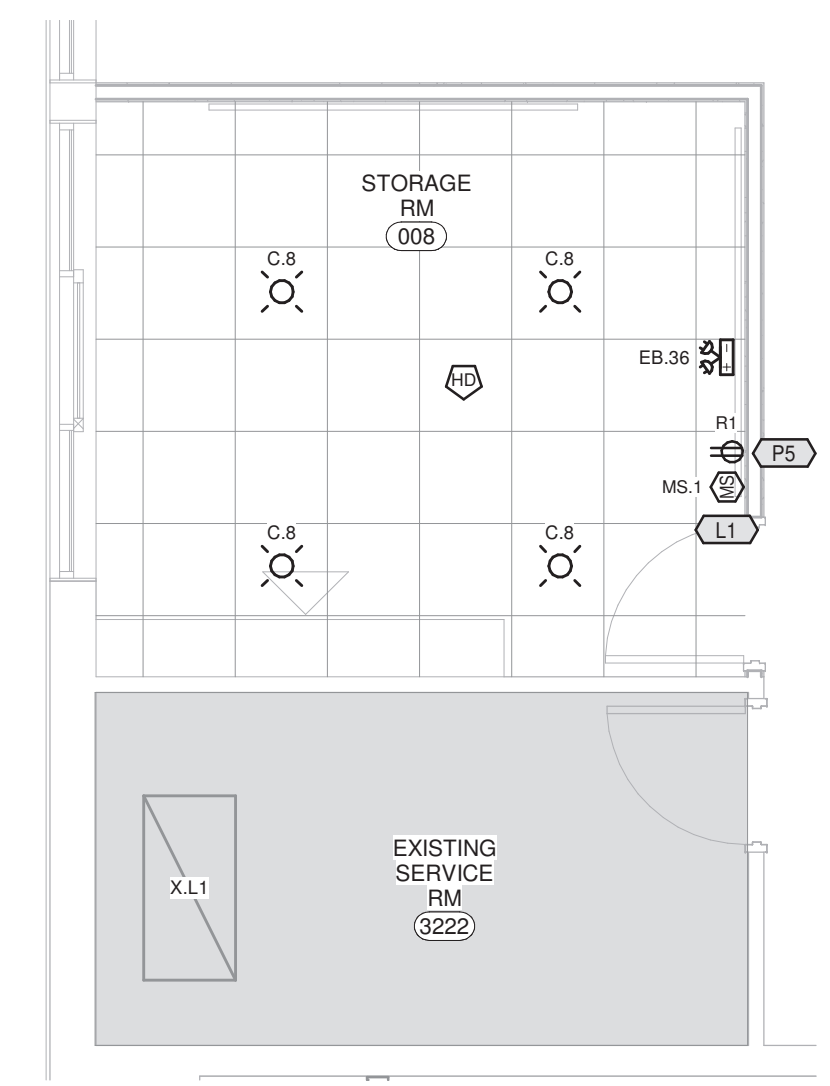
#	NOTE
L1	REWORK NEW LIGHTING CONTROL TO EXISTING LIGHTING CIRCUIT.
P3	CIRCUITING COMPLETED USING CIRCUITS MADE AVAILABLE DURING DEMOLITION. CONFIRM ACTUAL CIRCUITS AVAILABLE ON SITE.
P5	REWORK NEW RECEPTACLE ONTO EXISTING RECEPTACLE CIRCUIT MADE AVAILABLE DURING DEMOLITION.
P6	PROVIDE A DEDICATED CIRCUIT FOR NEW HANDDRYER. REWORK EXISTING 15A CIRCUIT BREAKER MADE AVAILABLE DURING DEMOLITION.



1 Proposed - Area Keymap
 1 : 500



4 Proposed - Staff Washroom
 1 : 50



5 Proposed - Storage
 1 : 50

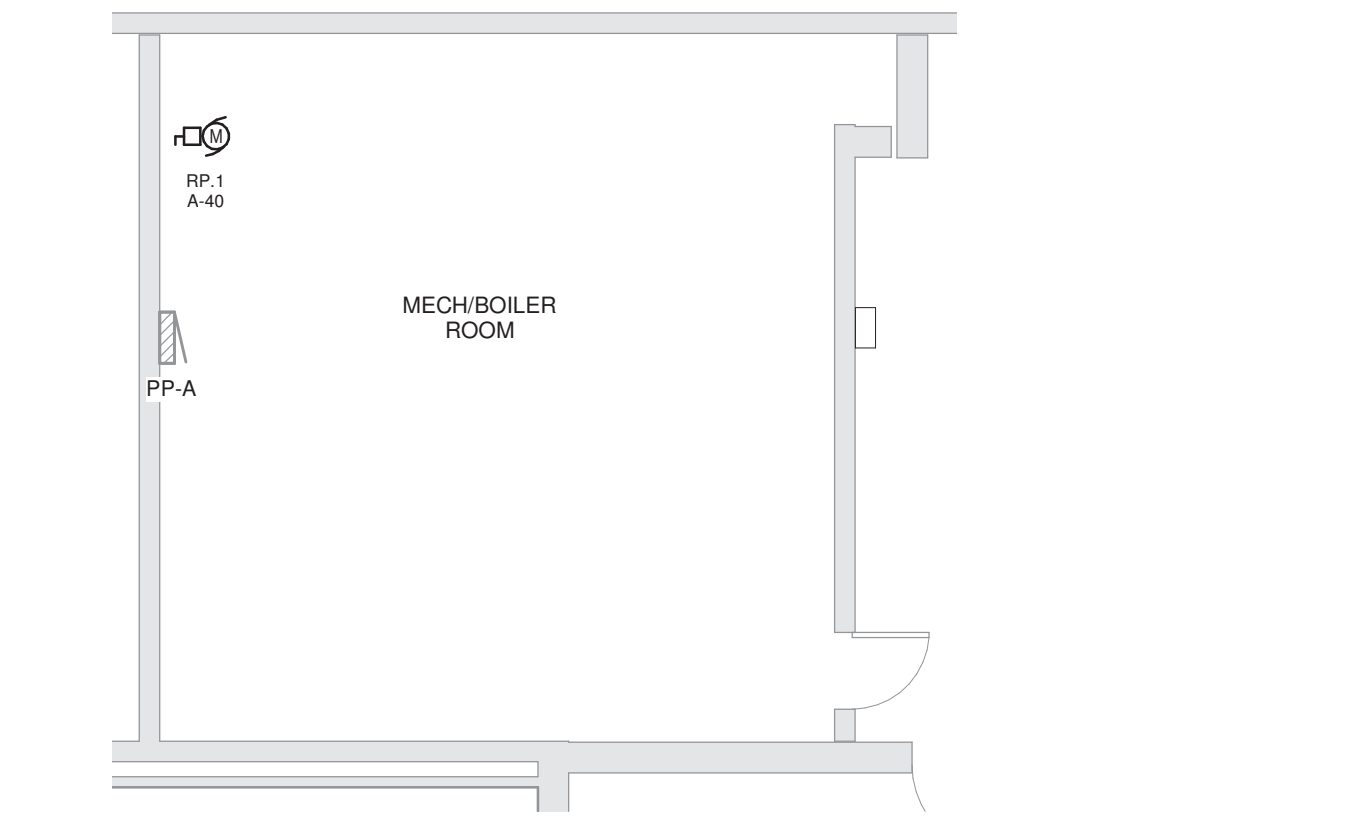
PANEL: PP-A

Location: Supply From: Mounting: Surface Enclosure: Type 1
 Volts: 208/120 WYE Phases: 3 Wires: 4
 A.I.C. Rating: Mains Type: MLO Mains Rating: 400 A MCB Rating:

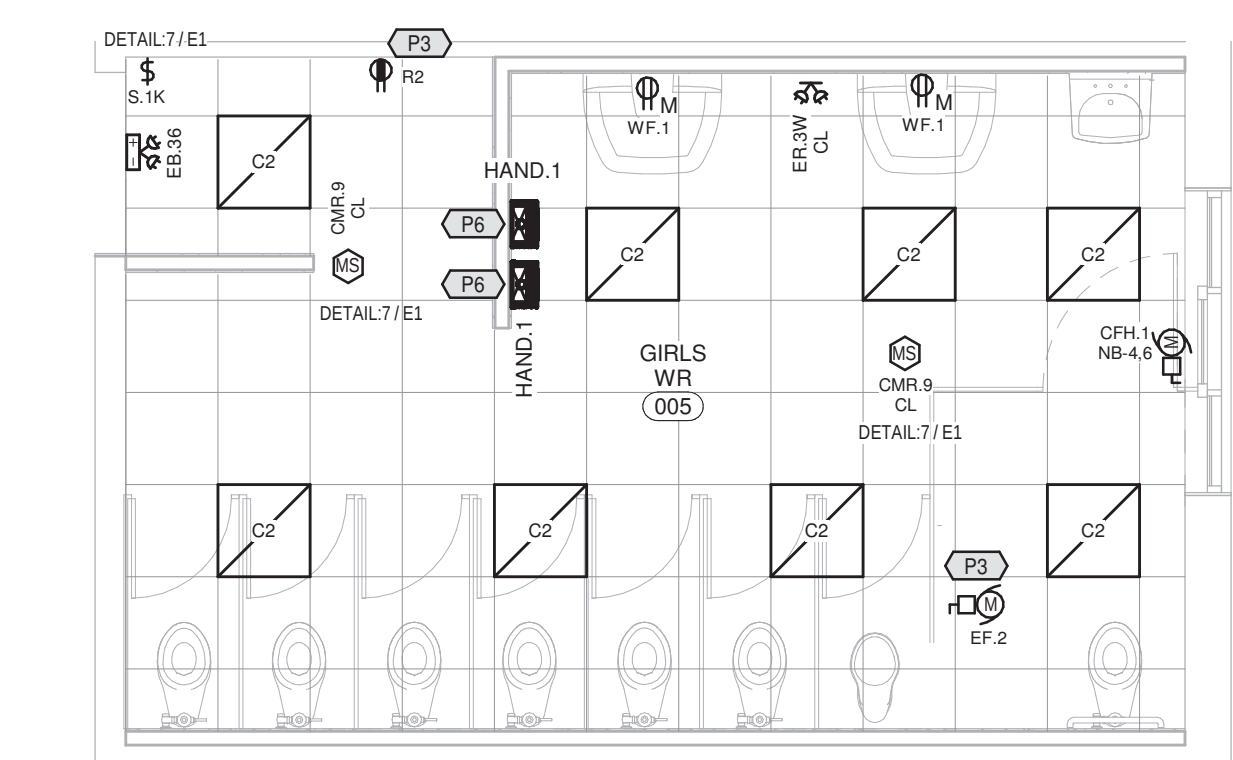
Notes:
 Existing EATON PRL1a Panel

CKT	Circuit Description	Trip	Poles	A B C	Poles	Trip	Circuit Description	CKT
A-1								A-2
A-3	PNL-LP-P	100 A	3		3	100 A	PNL-NC	A-4
A-5								A-6
A-7								A-8
A-9	PNL-NA	100 A	3		3	100 A	PNL-NB	A-10
A-11								A-12
A-13								A-14
A-15	Spare	100 A	3		3	100 A	Spare	A-16
A-17								A-18
A-19								A-20
A-21	FAN	15 A	3		2	30 A	Hot Water Tank	A-22
A-23								A-24
A-25	FIRE ALARM	15 A	1		2	15 A	Circulating Pump	A-26
A-27	Spare	15 A	1		1	30 A	Air Compressor	A-28
A-29	Outside Lights	20 A	1		1	15 A	Spare	A-30
A-31	Outside Lights	15 A	1		1	15 A	Spare	A-32
A-33	sump Pump	15 A	1		1	15 A	Boiler #1	A-34
A-35	Security Panel	15 A	1		1	15 A	Boiler #2	A-36
A-37	HW Tank 1	30 A	2		1	15 A	Boiler #1 & #2 Pump	A-38
A-39							Recirculation Pump	A-40
A-41								A-42
A-43								A-44
A-45								A-46
A-47								A-48
A-49								A-50
A-51								A-52
A-53								A-54
A-55								A-56
A-57								A-58
A-59								A-60

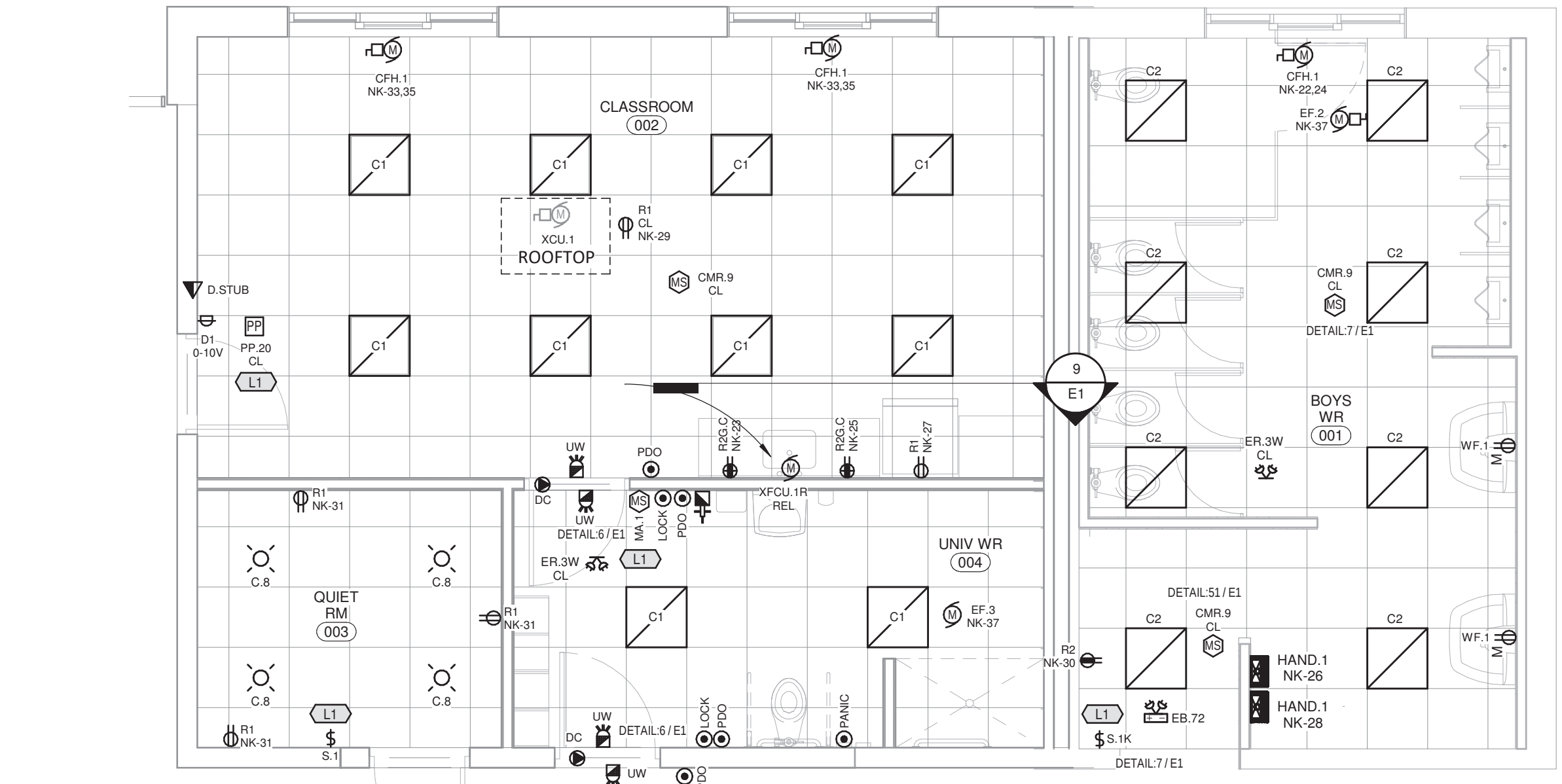
Notes:
 HATCH SHOWS EXISTING TO REMAIN. DISCONNECT EXISTING ELECTRICAL FEED TO EXISTING HOT WATER CIRCULATING PUMP. INVESTIGATE ON SITE RELATED CIRCUIT.



7 Proposed - Mech/Boiler Room - Basement
 1 : 75



3 Proposed - Girl's Washroom
 1 : 50



2 Proposed - Classroom & Boy's Washroom
 1 : 50

THIS DRAWING IS AN INSTRUMENT OF SERVICE & IS THE PROPERTY OF ROOTS ENGINEERING AND CANNOT BE MODIFIED AND/OR REPRODUCED WITHOUT THE PERMISSION OF ROOTS ENGINEERING LTD.
 THE CONTRACTOR MUST VERIFY ALL DIMENSIONS ON SITE AND REPORT ANY DISCREPANCIES TO THE ENGINEER, BEFORE PROCEEDING WITH THE WORK.
 DRAWINGS ARE NOT TO BE SCALED.



NO.	DESCRIPTION	DATE
5	Issued For Tender	Feb 13, 2025
4	Reissued For Permit	Feb 05, 2025
3	Reissued For Permit	Feb 03, 2025
2	Issued For Permit	Dec 23, 2024
1	Issued For Review	Nov 12, 2024

NO.	DESCRIPTION	DATE
REVISION SCHEDULE		



PROJECT NAME
Oakwood Public School
 357 Bartos Dr,
 Oakville City, ON

DRAWING TITLE
Proposed Electrical Plan

SCALE	DRAWING NUMBER
As indicated	E3
SHEET SIZE 24"x36"	
PROJECT NUMBER 24028	

1 - Total Removed - Low Voltage Device Schedule						
CURRENT SCHEDULE PHASE: Tender			SHOWING PHASE ITEMS: None			
QTY	Type	Conduit	Description	Phase Added	Phase Removed	
1	SPEAKER	21mm EMT	Surface Mount Device Box & EMT, Daisy Chain between devices; Home Run EMT to Main Communication Backboard.	EXISTING	Tender	
3	X.FS	Existing Data Device box for phone network	Data Device box for phone network	EXISTING	Tender	
5	X.SM	Existing Surface Wiremold	Surface Mount Device Box & Surface wiremold	EXISTING	Tender	
Total: 9						

2 - Total Removed - Electrical Equipment Schedule							
CURRENT SCHEDULE PHASE: Tender			SHOWING PHASE ITEMS: None				
Qty	Equip ID	Description	Type Comments	Enclosure	Mounting	Phase Added	Phase Removed
2	X.HAND1	Existing Hand Dryer		Type 1	Surface	EXISTING	Tender
Total: 2							

3 - Total Removed - Electrical Device Schedule						
CURRENT SCHEDULE PHASE: Tender			SHOWING PHASE ITEMS: None			
Qty	Type ID	Description	Type Comments	Phase Added	Phase Removed	
6	R1	15A Duplex Receptacle	120V 5-15R; 1-Gang Box	EXISTING	Tender	
4	R1.S	15A Duplex Receptacle	120V 5-15R; Surface mount device box.	EXISTING	Tender	
1	R1Q.5	15A Quad Receptacle - Surface Mount	120V 5-15R; Two - 15A Duplex Receptacles, in 2 Gang Surface Mount Box	EXISTING	Tender	
1	X.RS1	Special Receptacle	120V Special Type Rec; Surface mount device box.	EXISTING	Tender	
Total: 12						

4 - Total Removed - Fire Alarm Device Schedule						
CURRENT SCHEDULE PHASE: Tender			SHOWING PHASE ITEMS: None			
Qty	Model	Description	Type Comments	Phase Added	Phase Removed	
1		Fire Alarm Initiating	Smoke Detector	EXISTING	Tender	
Total: 1						

5 - Total Removed - Lighting Control Device Schedule								
CURRENT SCHEDULE PHASE: Tender			SHOWING PHASE ITEMS: None					
Qty	Relocated	Type	Mfg.	Model	Description	Type Comments	Phase Added	Phase Removed
10	No	X.S1	TBD	TBD	Existing Lighting Switch	120V	EXISTING	Tender
1	Yes	X.TC	TBD	TBD	Existing TimeClock	MZO West Time Control, with mini transformer	EXISTING	Tender
Total: 11								

6 - Total Removed - Lighting Fixture Schedule										
CURRENT SCHEDULE PHASE: Tender					SHOWING PHASE ITEMS: None					
Qty	Image	Type	Mfg.	Model#	Mounting	Height	Description	Remarks	Phase Added	Phase Removed
2			TBD	TBD			TBD	TBD	EXISTING	Tender
11		X.L1	TBD	TBD	Surface Mount		4 - 278	Surface Mount	EXISTING	Tender
3		X.L2	TBD	TBD	Recessed		Existing 1x4 Lighting Fixture	Recessed	EXISTING	Tender
1		X.L4	TBD	TBD	Surface Mount		Existing 1x4 Lighting Fixture	Surface Mount	EXISTING	Tender
1		X.LW1	TBD	TBD			TBD	Existing Wall light 218	EXISTING	Tender
1		X.L3	TBD	TBD			Existing Potlights	TBD	EXISTING	Tender
Total: 19										

7 - Total Removed - Mechanical Equipment Schedule														
CURRENT SCHEDULE PHASE: Tender			SHOWING PHASE ITEMS: None											
QTY	Type ID	Description	VOLTAGE	PHASE	hp - A - KW	MCA	MCCP	Interlock With	Isolation Switch By	Weather Proof	Wiring By:	Item Comments	Phase Added	Phase Removed
1	X.EFW1	Existing Wall Exhaust Fan	120 V	1		0 A	0 A			No			EXISTING	Tender
1	XFCU.1R	Existing Fan Coil Unit - Wall Cassette	120 V	1		15 A	15 A			No		Powered from XCU	EXISTING	Tender
Total: 2														

1 - Total New/Relocated - Low Voltage Device Schedule						
CURRENT SCHEDULE PHASE: Tender			SHOWING PHASE ITEMS: Show Previous + New			
QTY	Type	Conduit	Description	Phase Added		
2	D.STUB	21mm EMT	Provide 21 mm EMT Conduit stub through wall. Firestop conduit after data cables have been installed. Provide conduit bushings.	Tender		
2	LOCK	16mm EMT	Universal Washroom Lock Button. Device box & conduit to Door controller.	Tender		
1	PANIC	16mm EMT	Universal Washroom Panic Button. Device box & conduit to Door controller.	Tender		
4	PDO	16mm EMT	Power Door Operator; Device box & conduit to Door controller.	Tender		
1	S.21mm	21mm EMT	Surface Mount Device Box & Conduit to accessible ceiling; Conduit Bushing	Tender		
4	LW	16mm EMT	Universal Washroom AV Sounder; Device Box @ 2300mm; Conduit to Door Controller	Tender		
Total: 14						

2 - Total New/Relocated - Electrical Equipment Schedule						
CURRENT SCHEDULE PHASE: Tender			SHOWING PHASE ITEMS: Show Previous + New			
Qty	Equip ID	Description	Type Comments	Enclosure	Mounting	Phase Added
4	HAND.1	Hand Dryer	Dyson Airblade V Quiet Low Voltage, White, #307173-01, 120V, 8.32A, 12 Second Hand dry time, 63-79dbA, 42-38CFM, 0°C-40°C temperature range, 394mm H x 100mm D x 234mm W, Mounted at 1140mm Mems, 1090mm Womens Washroom.	Type 1	Surface	Tender
Total: 4						

3 - Total New/Relocated - Electrical Device Schedule						
CURRENT SCHEDULE PHASE: Tender			SHOWING PHASE ITEMS: Show Previous + New			
Qty	Type ID	Description	Type Comments	Phase Added	Phase Removed	
2	DC	Direct Hardwire Connection	Powered Door Controller; Wired to line side of local lighting circuit. Estimated ~300W non-continuous load.	Tender		
6	R1	15A Duplex Receptacle	120V 5-15R; 1-Gang Box	Tender		
4	R2	20A Duplex Receptacle	120V 5-20R; 1-Gang Box	Tender		
2	R2G.C	20A Duplex Receptacle	120V 5-20R; Class A - GFI Receptacle; Mounted at Counter Height, 4" Above Backsplash.	Tender		
Total: 14						

4 - Total New/Relocated - Fire Alarm Device Schedule						
CURRENT SCHEDULE PHASE: Tender			SHOWING PHASE ITEMS: Show Previous + New			
Qty	Model	Description	Type Comments	Phase Added	Phase Removed	
1	15cd	ANNUNCIATING	Strobe, 15cd	Tender		
1	RoR	Fire Alarm Initiating	Heat Detector, 57C, Rate of Rise, Connect to existing Initiating Zone	Tender		
Total: 2						

5 - Total New/Relocated - Lighting Control Device Schedule							
CURRENT SCHEDULE PHASE: Tender			SHOWING PHASE ITEMS: Show Previous + New				
Qty	Relocated	Type	Mfg.	Model	Description	Type Comments	Phase Added
5	No	CMR.9	Sensor Switch	CMR 9 PDT	PIR/Microphonics Ceiling Occ Sensor, Auto On/Off, 120V	120V; Auto-On; White; 360deg small motion; Single Relay	Tender
1	No	D1	Sensor Switch	SPDOM D WH	SwitchPod, Auto On, 24V, 0-10V Dimming, Push Button; Surface device box wiremold		Tender
3	No	MA.1	Sensor Switch	WSX 2P FAN ASHRT WH	PIR Wall Switch Occ Sensor, Auto On Pole 1&2	120V; Deep Device Box; Pole 1: 2#12 AWG AC90 to Lights in room; Pole 2: 2#12 AWG AC90 to Fan in room; Minimum Run Time per ASHRAE 62.2; up to 1/4hp motor; White; Set timeout to 10min;	Tender
1	No	MS.1	Sensor Switch	WSX WH	PIR Wall Switch Occ Sensor, Auto On/Off	120V; Auto-On; White	Tender
1	No	MS.2	Sensor Switch	WSX WH	PIR Wall Switch Occ Sensor, Auto On/Off; Surface device box. Wiremold	120V; Auto-On; White	Tender
1	No	PP.20	Sensor Switch	PP20	Class 1 120V, to Class 2 15V Power / Relay Pack	Plenum Rated; Power up to 14 sensors	Tender
1	No	S.1	TBD	TBD	Switch, 1-Pole Architectural Decora Style	120V	Tender
2	No	S.1K	TBD	TBD	Fork Key Wall Switch	Provide 120V 20A locking, single pole, white; Hubbel HBL1221LW or equal.	Tender
1	Yes	X.TC	TBD	TBD	Existing TimeClock	MZO West Time Control, with mini transformer	Tender
Total: 16							

6 - Total New/Relocated - Lighting Fixture Schedule									
CURRENT SCHEDULE PHASE: Tender					SHOWING PHASE ITEMS: Show Previous + New				
Qty	Image	Type	Mfg.	Model#	Mounting	Height	Description	Remarks	Phase Added
11		C1	Lithonia Lighting	CPANL-2x2-AL06-SWW7-M4	Recessed	T-bar	Switchable Lumen Panel	2x2 Fully switchable flat panel, 2400/3300/4400 lumen package, 35/40/50K Colour temperature, select 3300 lumen, 4000K Colour temperature, 120-277V, 41 Watts	Tender
16		C2	Lithonia Lighting	CPANL-2x2-AL06-SWW7-M4	Recessed	T-bar	Switchable Lumen Panel	2x2 Fully switchable flat panel, 2400/3300/4400 lumen package, 35/40/50K Colour temperature, select 2400 lumen, 4000K Colour temperature, 120-277V, 41 Watts	Tender
12		C.8	Stanpro	DLCO8R-PS25Q-5CWH	Recessed	T-bar	Slim Backlit Commercial Downlight	8", Selectable lumen (1700/2200/2800 lumen) & colour temperature (2700/3000/3500/4000/5000 Colour temperature) 25 watts, White finish, 120-347V. Set fixture to be 2200 Lumens & Colour temperature at 4000K	Tender
3		EB.36	BeLuce	NV-12-36-2SR-3WLED	Wall	2300mm	Steel Battery Unit, Emergency Light	Nova battery unit, 120VAC Input, 12VDC Output, 36W for 30 minutes 2SR heads, Don't exceed battery capacity with additional remote lighting heads. Connect to Line Side of Local Lighting Circuit	Tender
1		EB.72	BeLuce	NV-12-72-2SR-3WLED	Wall	2300mm	Steel Battery Unit, Emergency Light	Nova battery unit, 120VAC Input, 12VDC Output, 72W for 30 minutes 2SR heads, Don't exceed battery capacity with additional remote lighting heads. Connect to Line Side of Local Lighting Circuit	Tender
5		ER.3W	BeLuce	SR-2-6-12V-3WLED	Wall	2300mm	Small Style Emergency Remote Heads	06-12V, 2x3W LED Heads, White. Connect to nearest battery unit without exceeding battery capacity	Tender
Total: 48									

7 - Total New/Relocated - Mechanical Equipment Schedule														
CURRENT SCHEDULE PHASE: Tender			SHOWING PHASE ITEMS: Show Previous + New											
QTY	EQUIPMENT			ELECTRICAL					REMOTE ITEMS			Phase Added		
	Type ID	Relocated	Description	VOLTAGE	PHASE	hp - A - KW	MCA	MCCP	Interlock With	Isolation Switch By	Weather Proof		Wiring By:	Item Comments
4	CFH.1	No	Ceiling Fan Heater	208 V	1	1.5KW	4.1 A	15 A			E	No		Tender
2	EF.1	No	Ceiling Exhaust Fan	120 V	1		0.2 A	15 A			No			Tender
2	EF.2	No	Inline Exhaust Fan	120 V	1		5.1 A	15 A			No		To be controlled by a programmable time clock to ensure continuous operation during business hours.	Tender
1	EF.3	No	Washroom Ceiling Exhaust Fan	120 V	1		2.2 A	15 A			No			Tender
1	RP.1	No	Hot Water Recirculation Pump	120 V	1	120W	15 A	15 A			E	No		Tender
4	WF.1	No	Washfountain	120 V	1		15 A	15 A			No		Coordinate with sink installer for location of GFI receptacle to suit sink 120VAC/24VDC plug-in adapter. Circuit to line side of local lighting circuit.	Tender
1	XFCU.1R	Yes	Existing Fan Coil Unit - Wall Cassette	120 V	1		15 A	15 A			No		Powered from XCU	Tender
15														

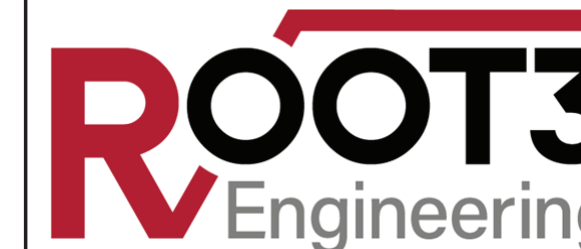
THIS DRAWING IS AN INSTRUMENT OF SERVICE & IS THE PROPERTY OF ROOTS ENGINEERING AND CANNOT BE MODIFIED AND/OR REPRODUCED WITHOUT THE PERMISSION OF ROOTS ENGINEERING LTD.

THE CONTRACTOR MUST VERIFY ALL DIMENSIONS ON SITE AND REPORT ANY DISCREPANCIES TO THE ENGINEER, BEFORE PROCEEDING WITH THE WORK.

DRAWINGS ARE NOT TO BE SCALED.



5	Issued For Tender	Feb 13, 2025
4	Relissued For Permit	Feb 05, 2025
NO.	DESCRIPTION	DATE
REVISION SCHEDULE		



1920 YONGE ST, SUITE 200

TORONTO, ON, M4S 3E2

PROJECT NAME
Oakwood Public School
357 Bartos Dr,
Oakville City, ON

DRAWING TITLE
Schedules

SCALE	DRAWING NUMBER
SHEET SIZE 24"x36"	E4
PROJECT NUMBER 24028	