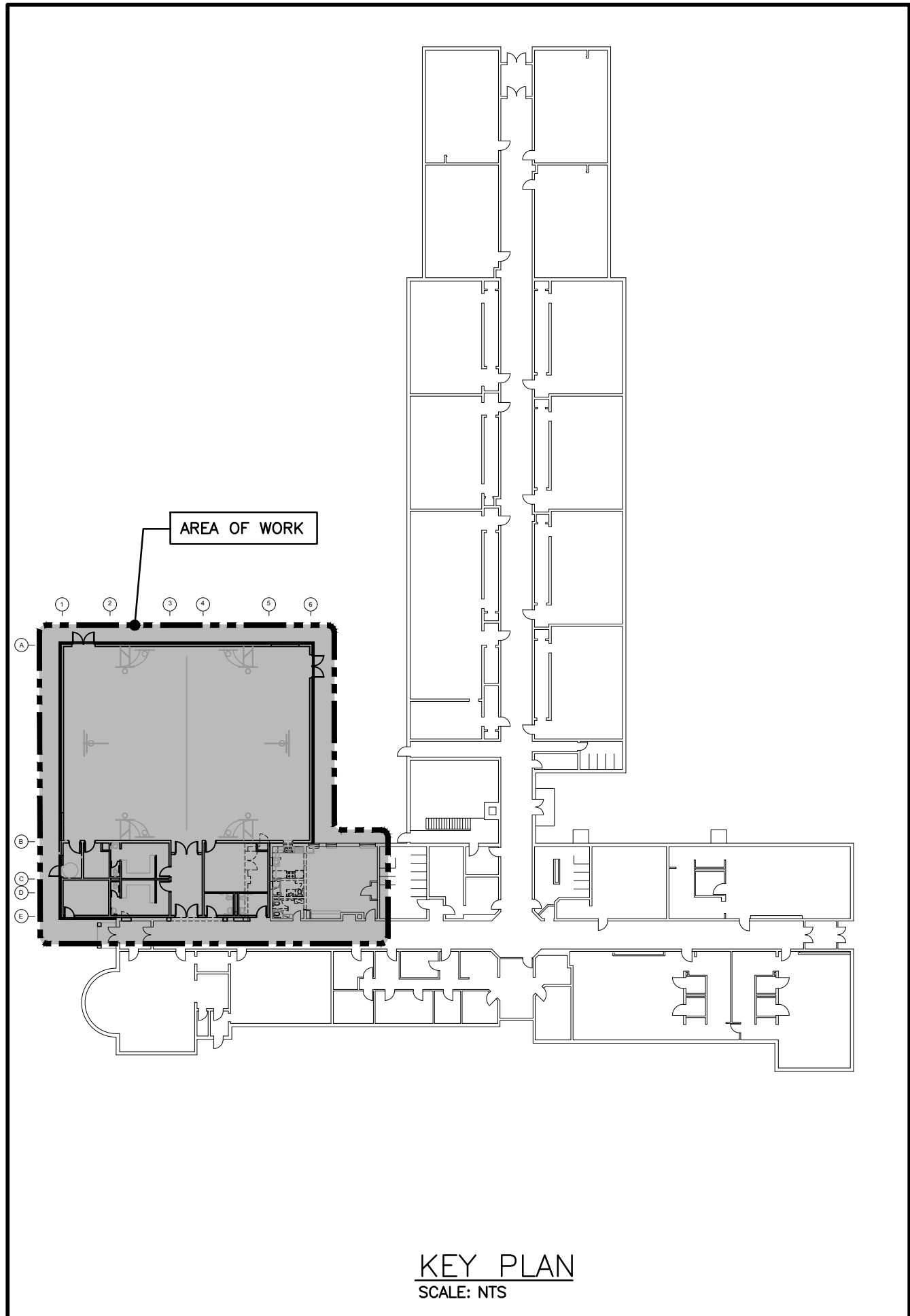


PLUMBING FIXTURE SCHEDULE											CAPACITY INDICATED ON SCHEDULE REFER TO SPECIFICATION FOR CONSTRUCTION STANDARDS, ACCESSORIES AND ADDITIONAL INFORMATION	
Item	Type	Connection Sizes			Acceptable Manufacturer	Fixture	Acceptable Manufacturer	Trim	Acceptable Manufacturer	Accessories		
		HW	CW	TW	Drain	Vent	Fixture Description	Trim Description		Accessory Description		
WC-1	BARRIER-FREE FLOOR MOUNTED FLUSH VALVE WATER CLOSET	25	80	40	AMERICAN STANDARD MADERA KOHLER CRANE		FLOOR-MOUNTED, FLUSH VALVE, FOR BARRIER-FREE, TOP OF SEAT TO BE BETWEEN 400 MM (16") AND 450 MM (18") FROM FINISHED FLOOR. VITREOUS CHINA, FLOOR MOUNTED, SYPHON JET, ELONGATED RIM, TOP SPUD FOR FLUSH VALVE, BOLT CAPS.	ZURN Z6000W-W51-D SLOAN MOEN COMMERCIAL	EXPOSED, POLISHED CHROME, EXTERNALLY ADJUSTABLE, DUAL FLUSH DIAPHRAGM TYPE WITH NPS 3/8 MM (1/2") SCREWDRIVER ANGLE STOP. OSCILLATING HANDLE, FLUSH CONNECTION AND COUPLING FOR NPS 40 MM (1 1/2") TOP SPUD, WALL AND SPUD ESQUIRE/SEAT BUMPER AND VACUUM BREAKER. ULTRA LOW FLUSH CYCLE: ADJUSTABLE FROM 3.8 - 17 LITRES (1.0 - 4.5 GAL)/FLUSH, FACTORY SET TO 5.7 LITRES (1.5 GAL)/FLUSH.	SEAT: CENTROD HL80ST3S BIMS GLS/STONE	SEAT: WHITE 50 MM (2") LIFT, ELONGATED, OPEN FRONT, ANTI-MICROBIAL, WITH COVER, MILDLY SOLID PLASTIC, STAINLESS STEEL CHECK HINGES, STAINLESS STEEL OR SOLID BRASS INSERT POST.	
WC-2	FLOOR MOUNTED FLUSH VALVE WATER CLOSET	25	80	40	AMERICAN STANDARD MADERA KOHLER CRANE		FLOOR-MOUNTED, TOP SPUD, ULTRA-LOW FLUSH, MAXIMUM 6 LITRES (1.6 GAL)/FLUSH, VITREOUS CHINA, SYPHON JET, ELONGATED RIM.	ZURN Z6000W-W51-D SLOAN MOEN COMMERCIAL	EXPOSED, POLISHED CHROME, EXTERNALLY ADJUSTABLE, DUAL FLUSH DIAPHRAGM TYPE WITH NPS 25 MM (1") SCREWDRIVER ANGLE STOP, OSCILLATING HANDLE, FLUSH CONNECTION AND COUPLING FOR NPS 40 MM (1 1/2") TOP SPUD, WALL AND SPUD ESQUIRE/SEAT BUMPER AND VACUUM BREAKER. ULTRA LOW FLUSH CYCLE: ADJUSTABLE FROM 3.8 - 17 LITRES (1.0 - 4.5 GAL)/ FLUSH, SET TO 5.7 LITRES.	SEAT: CENTROD AM500ST3SC BIMS GLS/STONE	SEAT: HEAVY-DUTY, WHITE, ELONGATED, OPEN FRONT, ANTI-MICROBIAL, MOLDED SOLID PLASTIC, LESS COVER, STAINLESS STEEL CHECK HINGES, STAINLESS STEEL OR SOLID BRASS INSERT POST.	
L-1	BARRIER-FREE WALL MOUNTED LAVATORY (C/W FLOOR MOUNTED WALL CARRIER)	15	15	32	32	AMERICAN STANDARD MURRO KOHLER CRANE	VITREOUS CHINA, LOW SHELF, WITH INTEGRAL BASK, CONTOURED FRONT, SHALLOW FRONT BASIN, FRONT OVERFLOW, SUPPLY OPENINGS ON 100 MM (4") CENTRES, FREE CONTACT GUARD, CONCEALED SUPPORTS, SIZE: 686 MM X 500 MM (27" X 20"), SQUARE FRONT, WASTE FITTING: NPS 32 MM (1 1/4") OFFSET WASTE WITH GRID STRAINER & CHROME PLATED CAST BRASS 2-PIECE P-TRAP	DELTA 591T1250 ZURN MOEN COMMERCIAL	TRIM: BARRIER-FREE ELECTRONIC FAUCET, ACTIVATED BY (NPKA-RO) SENSOR RESPONDING TO PRESENCE OF PERSON'S HANDS IN LAVATORY, SENSOR: WATERPROOF, [INCORPORATED IN BODY OF UNIT (OCC-MOUNTED) WITH IMPACT-RESISTANT PLASTIC LENS WITH ANTI-SCRATCH COATING, SENSITIVITY ADJUSTABLE FROM 100 MM TO 450 MM (4" TO 18"), WATER CONSERVATION: 30 SECOND MAXIMUM RUN TIME, CONTROLS: VARIAD-PROOF, SPOUT: CHROME PLATED, WITH KEYSHAP WATER FLOW CONTROL FOR 6.35 L/MIN (2.2 GPM) AT 413 KPA (50 PSI) MAXIMUM, UNDER-COUNTER TEMPERATURE THERMOSTATIC MIXING CONTROL VALVE, (POWERS OR EQUAL), SUITABLE FOR 120V/1/60.	INSULATION: MCGUIRE PROWRAP TRUBERO	INSULATE WASTE AND SUPPLIES WITH UL LISTED PREFORMED INSULATION SYSTEM COMPLETE WITH SEAMLESS JACKET, PROVIDE POWERS HYDROGUARD SERIES UL14M495 OR EQUIVALENT THERMOSTATIC MIXING VALVE TO LIMIT HOT WATER SUPPLY. TEMPERATURE: WASTE FITTING: GRID STRAINER. PROVIDE OFFSET 1/2" x GUARD FOR BARRIER FREE, COMPLETE WITH PLUG-IN TRANSFORMER SUITABLE FOR 120V/1/60, PROVIDE FLOOR MOUNTED WALL CARRIER	
L-2	WALL MOUNTED LAVATORY (C/W FLOOR MOUNTED WALL CARRIER)	15	15	32	32	AMERICAN STANDARD LUCERNE KOHLER CRANE	WALL-HUNG, INTEGRAL BASK, VITREOUS CHINA, WITH SPLASH UP, SOAP DEPRESSIONS, SUPPLY OPENINGS ON 100 MM (4") CENTRES, OVERFLOW, SIZE: 500 MM X 450 MM (20" X 18"), WASTE FITTING: NPS 32 MM (1 1/4") OFFSET WASTE WITH GRID STRAINER & CHROME PLATED CAST BRASS 2-PIECE P-TRAP	DELTA 591T1250 ZURN MOEN COMMERCIAL	TRIM: BARRIER-FREE ELECTRONIC FAUCET, ACTIVATED BY (NPKA-RO) SENSOR RESPONDING TO PRESENCE OF PERSON'S HANDS IN LAVATORY, SENSOR: WATERPROOF, [INCORPORATED IN BODY OF UNIT (OCC-MOUNTED) WITH IMPACT-RESISTANT PLASTIC LENS WITH ANTI-SCRATCH COATING, SENSITIVITY ADJUSTABLE FROM 100 MM TO 450 MM (4" TO 18"), WATER CONSERVATION: 30 SECOND MAXIMUM RUN TIME, CONTROLS: VARIAD-PROOF, SPOUT: CHROME PLATED, WITH KEYSHAP WATER FLOW CONTROL FOR 6.35 L/MIN (2.2 GPM) AT 413 KPA (50 PSI) MAXIMUM, UNDER-COUNTER TEMPERATURE THERMOSTATIC MIXING CONTROL VALVE, (POWERS OR EQUAL), SUITABLE FOR 120V/1/60.	INSULATION: MCGUIRE PROWRAP TRUBERO	INSULATE WASTE AND SUPPLIES WITH UL LISTED PREFORMED INSULATION SYSTEM COMPLETE WITH SEAMLESS JACKET, PROVIDE POWERS HYDROGUARD SERIES UL14M495 OR EQUIVALENT THERMOSTATIC MIXING VALVE TO LIMIT HOT WATER SUPPLY. TEMPERATURE: WASTE FITTING: NPS 32 MM (1 1/4") OFFSET WASTE WITH GRID STRAINER, COMPLETE WITH PLUG-IN TRANSFORMER SUITABLE FOR 120V/1/60, PROVIDE FLOOR MOUNTED WALL CARRIER	
FD-1	GENERAL DUTY FLOOR DRAIN	NOTED	40	ZURN ZIN-415-B MEFAB F1000 WATTS DRAINAGE: FD-100-D-AS-1 OR FD-100-D-LS-1 JAY R. SMITH 2005-AOSNB			GENERAL DUTY CAST IRON BODY, ADJUSTABLE HEAD, NICKEL BRONZE STRAINER, INTEGRAL SEEPAGE PAN, AND CLAMPING COLLAR, USE SQUARE STRAINER IN TILED AREAS AND ROUND STRAINER ELSEWHERE, C/W TRAP PRIMER					
RD-2	ROOF DRAIN	NOTED	ZURN ZA121-CR MYRAB R1200-BU CONTOUR C1000MD WATTS 10-100-BEL-K SMITH 1015-C-20-AD				STANDARD ROOF DRAIN WITH CAST IRON BODY WITH ALUMINUM DOME, UNDER-DECK CLAMP TO SUIT ROOF CONSTRUCTION, ROOF SUMP RECEIVER, FLASHING CLAMP WITH INTEGRAL GRAVEL STOP					

PACKAGED HVAC UNIT SCHEDULE										CAPACITY LISTING ON SCHEDULE REFER TO SPECIFICATION FOR CONSTRUCTION STANDARDS, ACCESSORIES AND ADDITIONAL INFORMATION.
Item	Type	Nominal Capacity		ESP Motor	Electrical Data		Acceptable Manufacturer	Notes		
		tons	Head (ft)		Vol (V)	Watt (W)				
Hvac-1	PACKAGED ROOFTOP HVAC UNIT	20	7000	400	242	1.5	2.9	575/360	47 60 TRANE DH24-24MSHAX CARRIER LENNOX	HIGH HEAT, DOWN DISCHARGE & RETURN, INTEGRAL AIR SOURCE HEAT PUMP CONDENSER C/W NATURAL GAS BACKUP, 30% OUTDOOR AIR
GENERAL HVAC UNIT NOTES:										
1. ACCEPTABLE MANUFACTURERS: CARRIER, LENNOX, TRANE.										
2. UNITS HAVE 2 STAGE NATURAL GAS/PROPANE HEAT, 2 STAGE CO COOLING PLUS ECONOMIZER, BLUR, STAFFE FANS, VFD FAN MOTOR CONTROL.										
3. PROVIDE STANDARD INSULATED 24" HIGH ROOF CURBS, INTEGRAL/ISOLATION RAIN CURBS, STAINLESS STEEL GAS HEAT EXCHANGER, CONDENSER COIL GUARD, 1" INSULATED GAS PIPING, POWER EXHAUST, ECONOMIZER, AND ALL HORIZONTAL EXHAUSTS MUST BE INSULATED. PROVIDE WAREHOUSE WHERE DISPOSED. MEV 13 DISPOSABLE FILTERS.										
4. CONTROL SYSTEM CONTROLS BY BAS CONTRACTOR, PROVIDE INTEGRAL CONTROLLER MATCHED TO BAS MANUFACTURER.										

GRILLE SCHEDULE				CAPACITY INDICATED ON SCHEDULE REFER TO SPECIFICATION FOR CONSTRUCTION STANDARDS, ACCESSORIES AND ADDITIONAL INFORMATION.
Item	Type	Manufacturer & Model	Finish	Remarks
D1	ROUND CEILING SUPPLY	KRUEGER PA2	BAKED OFF WHITE	C/W SAFETY CHAINS. SLIDING ADJUSTMENT NOT ACCEPTABLE
D2	ROUND SUPPLY	KRUEGER PA2	BAKED OFF WHITE	C/W SAFETY CHAINS & GUARD. SLIDING ADJUSTMENT NOT ACCEPTABLE
D3	LINEAR SUPPLY	KRUEGER E200	C/W 3 SLOT AND INSULATED PLUMING SUITABLE FOR DRYWALL.	PROVIDE CONTINUOUS GRILLE WHERE NOTED
R1	CEILING RETURN/EXHAUST	KRUEGER E003	BAKED OFF WHITE	C/W SCREWED FASTENING
R2	GYMNASIUM RETURN	KRUEGER S400	BAKED OFF WHITE	C/W SCREWED FASTENING

FAN SCHEDULE										CAPACITY INDICATED ON SCHEDULE REFERS TO SPECIFICATION FOR CONSTRUCTION MATERIALS, ACCESSORIES AND ADDITIONAL INFORMATION.
Item	Type	Service	Capacity CFM	Exhaust Capacity CFM	AC Volts	SP HP	Voltage	Manufacturer	Model	Remarks
EF-1	ROOF EXHAUST	WASHROOM EXHAUST	400	1/4	1/4	0.75	120/160	PENN BARRY	G-900-V	C/W 600mm (24") HIGH INSULATED ROOF CURB & BACKDRAFT PANEL, DWR BY BAS CONTRACTOR
EF-2	RANCHWOOD EXHAUST	STAFF ROOM	210	1/8	3/8	0.20	120/160	BAYNOR	SAKILE	CONTINUOUS TIGHT HOUSING, FULLY ENCLOSED BOTTOM, TOP DISCHARGE, CENTRIFUGAL BLOWER WHEEL, WASHABLE ALUMINUM FILTERS, 3 SPEED BLOWER CONTROL, PROWIDE 2 LEVEL LED LIGHTS, COLLAPSE DOWN FOR STORAGE
EF-3	CEILING EXHAUST FAN	EXTERNAL RM.	100	1/8	3/8	0.20	120/160	BAYNOR	L100	ACOUSTICALLY INSULATED STEEL HOUSING, CENTRIFUGAL BLOWER WHEEL, 90° DISCHARGE OUTLET W/BACKDRAFT PANEL, C/W WHITE PAINTED NAME, TIGHT, GRILLE, VIBRATION ISOLATORS, 1/2" ZONE



MECHANICAL LEGEND			
Item	Description	Item	Description
	OUT EXISTING & CONNECT NEW PIPING		IN-LINE TEMPERATURE CONTROL VALVE
	FLOW DIRECTION		TEED FIRE EXTINGUISHER
	DOMESTIC COLD WATER PIPING		FIRE MOUNDED FIRE EXTINGUISHER
	DOMESTIC HOT WATER PIPING		FIRE BLANKET IN CABINET
	DOMESTIC HOT WATER REDUC. PIPING		FLOOR CLEANOUT
	EXISTING DOMESTIC COLD WATER PIPING		THERMOSTAT (WITH OR WITHOUT GUARD)
	EXISTING DOMESTIC HOT WATER REDUC. PIPING		TURNING VANES
	EXISTING SANITARY PIPING ABOVE FLOOR		STOPPED/AIR-HELD AIR DUCT
	EXISTING SANITARY PIPING BELOW FLOOR		ACOUSTIC DUCT LINING
	SANITARY PIPING ABOVE FLOOR		BALANCING DAMPER
	SANITARY PIPING BELOW FLOOR		BRANCH AIR-SPLITTING COLLAR C/W BALANCING DAMPER
	EXISTING STORM PIPING ABOVE FLOOR		TRUNK MAIN BRANCH COLLAR C/W BALANCING DAMPER
	EXISTING STORM PIPING BELOW FLOOR		
	STORM PIPING ABOVE FLOOR		
	STORM PIPING BELOW FLOOR		
	SPRINKLER PIPING		BALANCING DAMPER
	HEATING WATER SUPPLY PIPING		OPPOSED BLADE DAMPER
	HEATING WATER RETURN PIPING		FIRE DAMPER
	NATURAL GAS PIPING		FLEXIBLE ROUND DUCT
	HIGH PRESSURE NATURAL GAS PIPING		DIFFUSER/GRIFFLE SIZE (imp.) TYPE & CAPACITY (cfm)
	FLOOR DRAIN		
	TRAP PRIMER		
	TEE CONNECTION		
	PIPE DOWN		
	PIPE UP		
	SCREWED OR WELDED PIPE CAP		
	BALL VALVE		
	BALANCING VALVE		

## GENERAL NOTES

- A. ALL DRAWINGS ARE TO BE READ IN CONJUNCTION WITH THE PREPARED SPECIFICATION.
- B. CONTRACTOR TO INCLUDE COST FOR CONSULTANT TO COMPLETE ELECTRONIC CAD AS-BUILT DWGS (ALL PAGES), REFER TO SPEC SECTION 20 02 51 - RECORD DWGS.
- C. ALL PIPING, DUCTWORK, AND EQUIPMENT IS TO BE RESTRAINED TO MEET SEISMIC CODE REQUIREMENTS. SUPPLY AND INSTALL ALL SEISMIC RESTRAINT MATERIALS TO MANUFACTURER'S WRITTEN INSTRUCTIONS. REFER TO SPECIFICATION.
- D. SANITARY VENT PIPING IS NOT SHOWN. PROVIDE ALL NECESSARY VENT PIPING FROM ALL FIXTURES FOR A COMPLETE SYSTEM AT ALL LOCAL PLUMBING CODE & LOCAL AUTHORITY REQUIREMENTS. CONNECTED TO EXISTING VENTS OR NEW VENTS AS REQUIRED. CO-ORDINATE VENT LOCATION(S) WITH GENERAL CONTRACTOR. MAINTAIN MIN 14"-0" FROM ANY AIR INLET. INSTALL VENT PIPING HIGH IN JOIST SPACE.
- E. WHERE DUCTWORK PENETRATES CORRIDOR WALL, CENTER DUCT(S) BETWEEN OWSJ.
- F. CO-ORDINATE WITH THE GENERAL CONTRACTOR ANY OWSJ BRIDGING/CROSS BRACING RELOCATION OR REMOVAL/REPLACEMENT REQUIRED FOR INSTALLATION OF DUCTWORK.
- G. CONTRACTOR TO LOCATE ISOLATION VALVES / FREEZE PIPING / OR OTHERWISE DRAIN SYSTEMS TO ALLOW PROPOSED WORK TO PROCEED. REFILL SYSTEMS AS INDICATED.
- H. UPON COMPLETION OF THE PROJECT OR UPON COMPLETION OF EACH INDIVIDUAL PHASE OF THE PROJECT THE CONTRACTOR SHALL PROVIDE THE FOLLOWING CERTIFICATES BEFORE COMMENCEMENT OF LETTERS ARE ISSUED BY THE CONSULTANT:
  - 1. POTABLE WATER TEST (SEE SPEC 22 11 16 PART 3)
  - 2. COPY OF MANDATORY TSSA/CSSA-B149 GAS PRESSURE TEST TAG
  - 3. MECHANICAL SEISMIC RESTRAINT ENGINEER'S INSPECTION/COMFORMANCE LETTER

ALL CERTIFICATES ARE TO BE SUBMITTED TOGETHER IN A SINGLE PACKAGE.

### IMPORTANT NOTES

- SEISMIC RESTRAINT IS REQUIRED FOR THIS PROJECT.
- ALL PIPING, DUCTWORK AND EQUIPMENT IS TO BE RESTRAINED TO MEET CODE REQUIREMENTS. THE SEISMIC RESTRAINT MANUFACTURER SHALL PROVIDE DOCUMENTATION ON MAXIMUM RESTRAINT SPRING FOR VARIOUS RESTRAINT SIZES AND ANCHORS, AS WELL AS WORST CASE REACTION LOADS FOR EACH RESTRAINT AND/OR ANCHOR SIZE.
- SUBMIT SHOP DRAWING AND DESIGN CALCULATION TO CALCULATE REQUIREMENTS FOR SELECTING SEISMICALLY RATED VIBRATION ISOLATORS AND SEISMIC RESTRAINTS. CERTIFICATION DOCUMENTS FROM AN EARTHQUAKE ENGINEER OR PROFESSIONAL ENGINEER WITH AT LEAST 5 YEARS OF EXPERIENCE IN THE DESIGN OF SEISMIC RESTRAINTS, PROFESSIONAL ENGINEER SHALL HAVE LOCAL JURISDICTION AND PROVIDE PERMITTED FIELD REVIEW AND PABC CERTIFICATION UPON COMPLETION OF THE PROJECT. ALL COSTS AND FEES ASSOCIATED WITH THE ENGINEERING SHALL BE THE RESPONSIBILITY OF THIS CONTRACTOR.
- REFER TO SPECIFICATION FOR ADDITIONAL REQUIREMENTS.

### **NOTES**

1. ALL CONSTRUCTION TO MEET ONTARIO BUILDING CODE REQUIREMENTS.
2. ALL CONSTRUCTION WHETHER DETAILED ON PLAN OR NOT IS SUBJECT TO FIELD APPROVAL.
3. REVIEWED PERMIT DRAWINGS MUST REMAIN AT THE JOB SITE UNTIL COMPLETION OF THE PROJECT.
4. REVIEW OF THESE PLANS DOES NOT NECESSARILY GUARANTEE THAT THE JOB WAS IN CONFORMANCE WITH THE ONTARIO BUILDING CODE.
5. IT IS THE OWNER/BUILDER'S RESPONSIBILITY TO CALL FOR INSPECTIONS IN ACCORDANCE WITH THE ONTARIO BUILDING CODE.

**The ARCHITECT and/or PROFESSIONAL ENGINEERS** shall be responsible for the field review of the building during construction to ensure conformance to the approved design. Field review reports must be submitted at least monthly to the Burlington Building Department. Prior to occupancy, the Architect and/or Professional Engineers must also submit a signed statement that, based upon their field review of the work falling within their discipline, they are of the opinion that such work has been carried out in general accordance with the approved plans.

The logo for the City of Burlington Building Services is a red-bordered rectangle. Inside, the text "CITY OF BURLINGTON" is at the top, followed by "BUILDING SERVICES". In the center, the word "REVIEWED" is written in a large, bold, red font. Below it, "FOR PERMIT ISSUANCE" is written. At the bottom, there are three fields: "DATE" followed by "JULY 31, 2024", "PERMIT NUMBER" followed by "24 008616", and "EXAM" followed by "JK".

**Halton District School Board**  
2050 Guelph Line,  
Burlington, ON.  
L7P 5A8

Glenview Public School  
Gym Addition

Architects

sn/der

**Snyder Architects Inc.**  
100 Broadview Ave, Suite 301,  
Toronto, ON M4M 3H3  
t. 416.966.5444, w. [snyderarchitects.ca](http://snyderarchitects.ca)

30 Northland Road,  
Whitstone, NSW 1503  
Phone: 02 9371 1100  
Fax: 02 9371 1101  
Project Number 1400000

**Consulting Engineers**  
MECHANICAL, ELECTRICAL, AQUATIC

The contractor shall verify all dimensions and report all errors and discrepancies to the Consultant before commencement of the work. The drawings show general arrangement of services. Follow closely as actual building construction will permit. Obtain approval for relocation of service from Consultant before commencing work.

The drawings do not indicate all offsets fitting and accessories which may be required. Provide the same to meet the required conditions. Drawings and specifications, etc., prepared and issued by the consultant and drawings of the consultant and must be returned at the completion of the project. These documents are not to be used in any other project without the consent of the Consultant.

Do not scale this drawing.

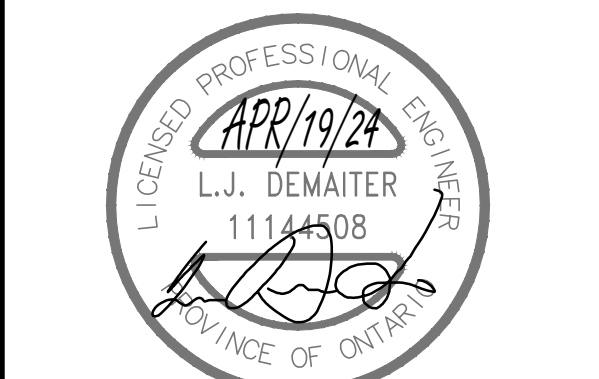
© 2024 DEI Consulting Engineers Inc.

ALL CONSTRUCTION TO  
MEET ONTARIO BUILDING  
CODE REQUIREMENTS

**RECEIVED**

MAY 03 2024

CITY OF BURLINGTON  
BUILDING DEPARTMENT

[illegible]

Drawing Title:

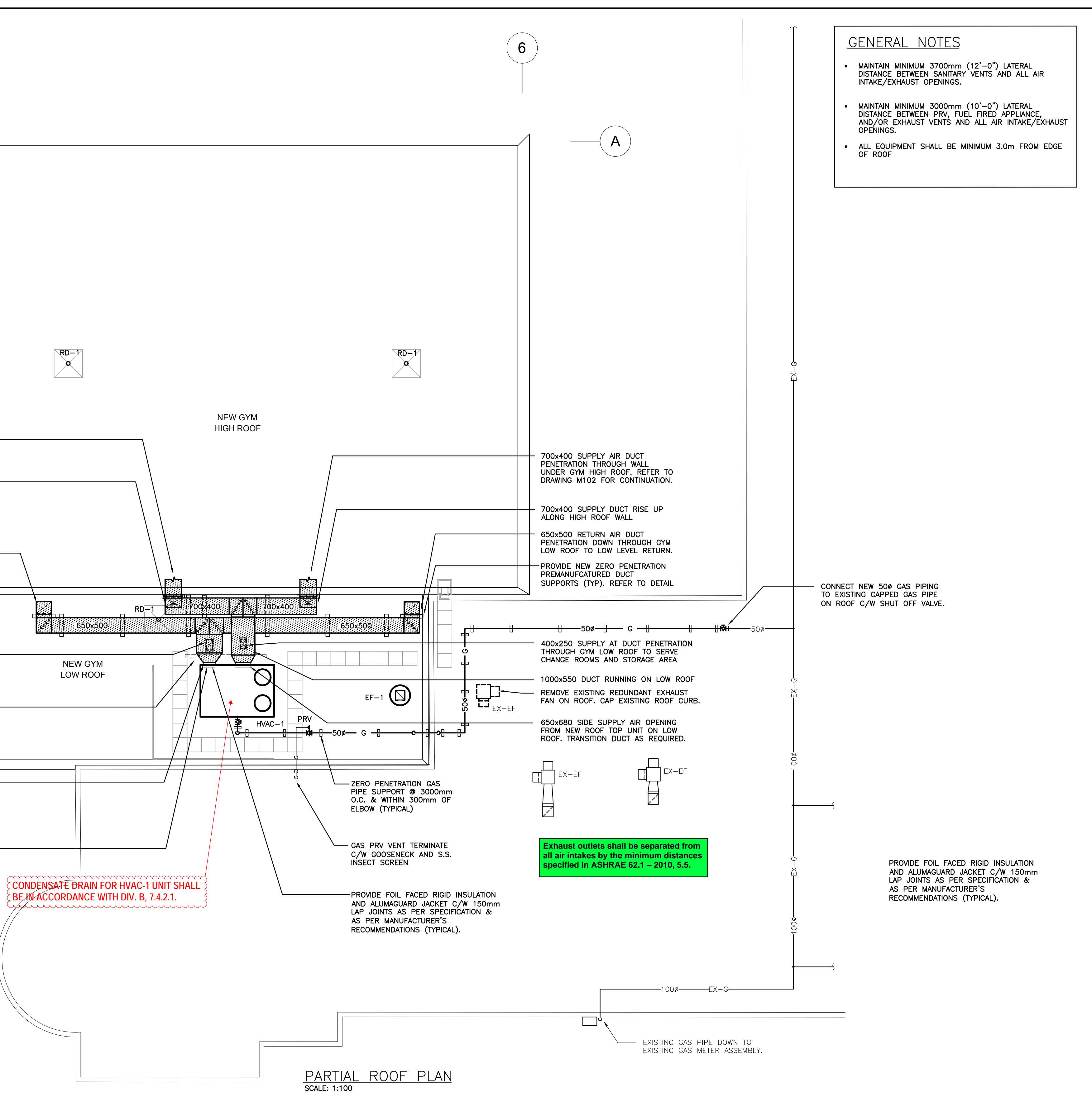
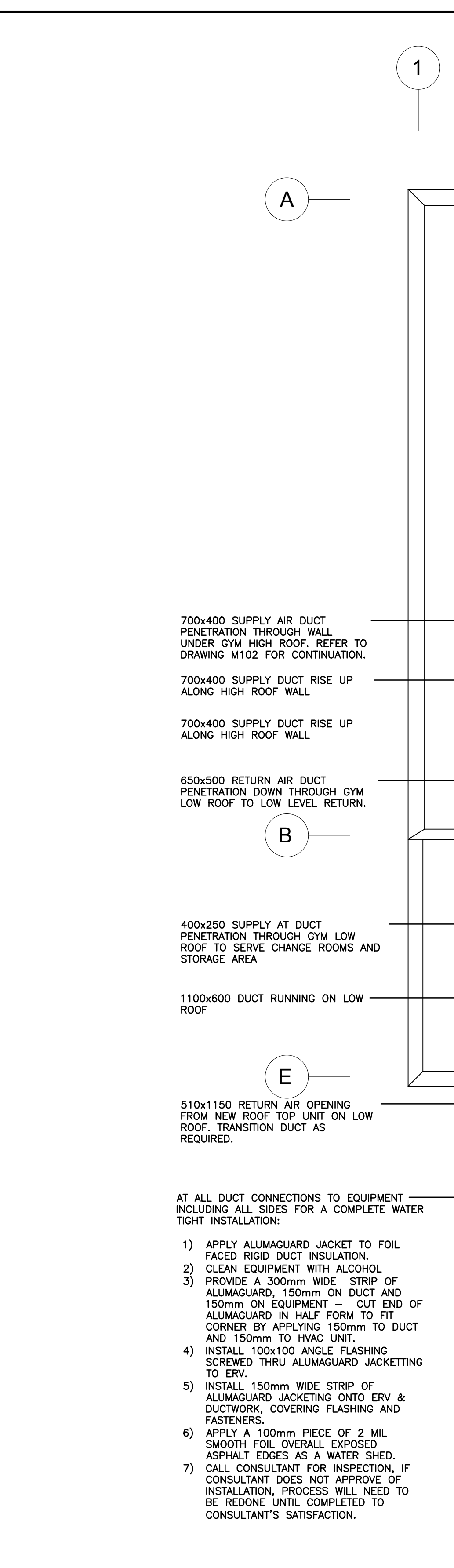
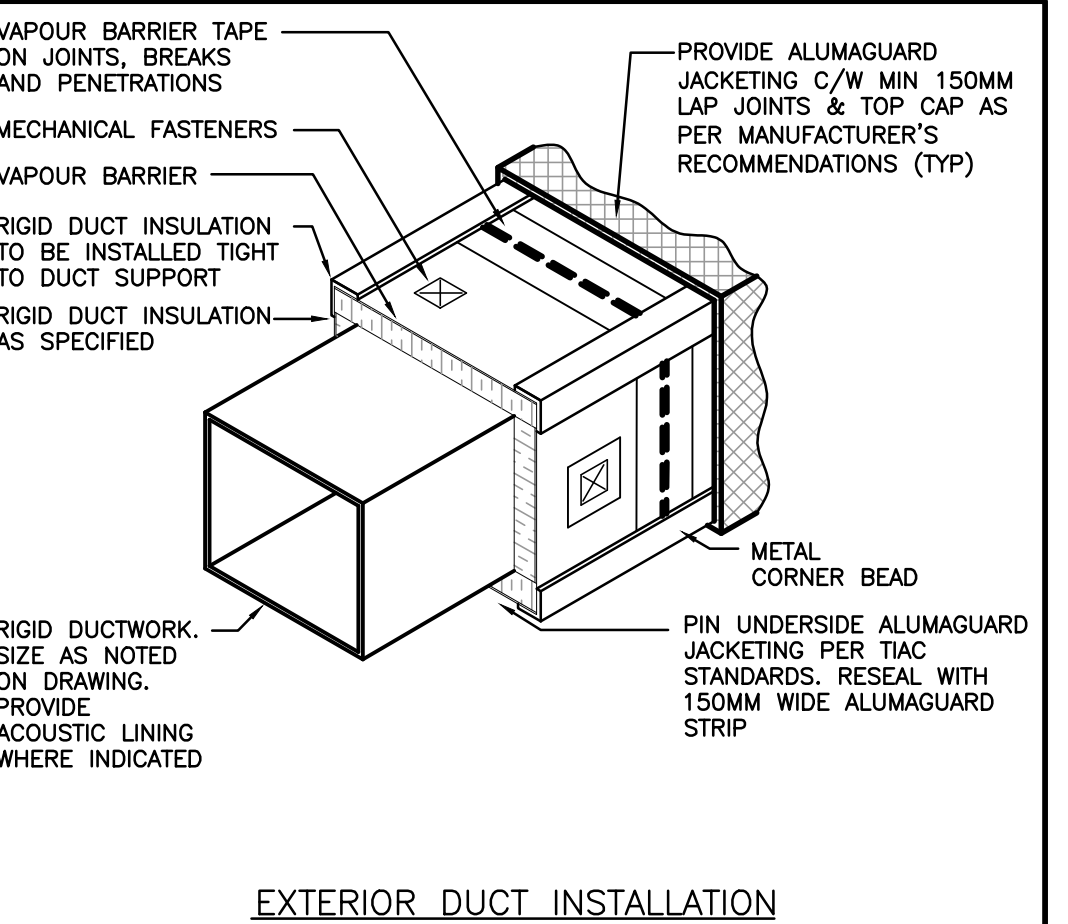
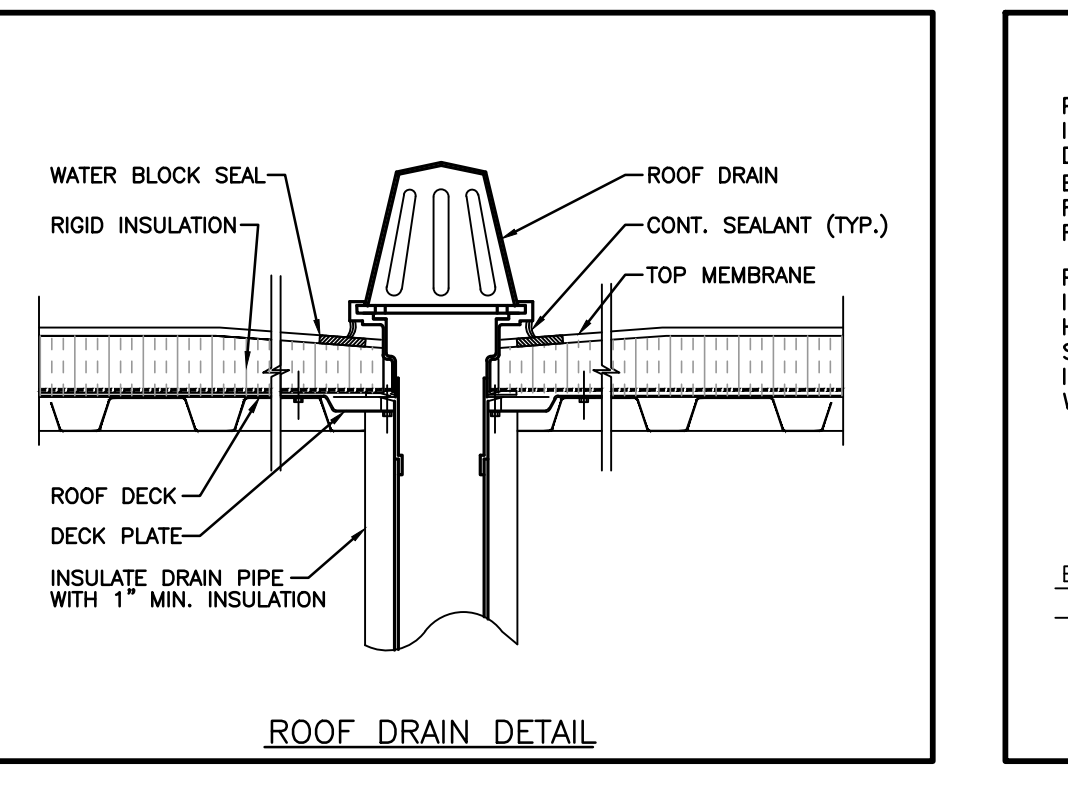
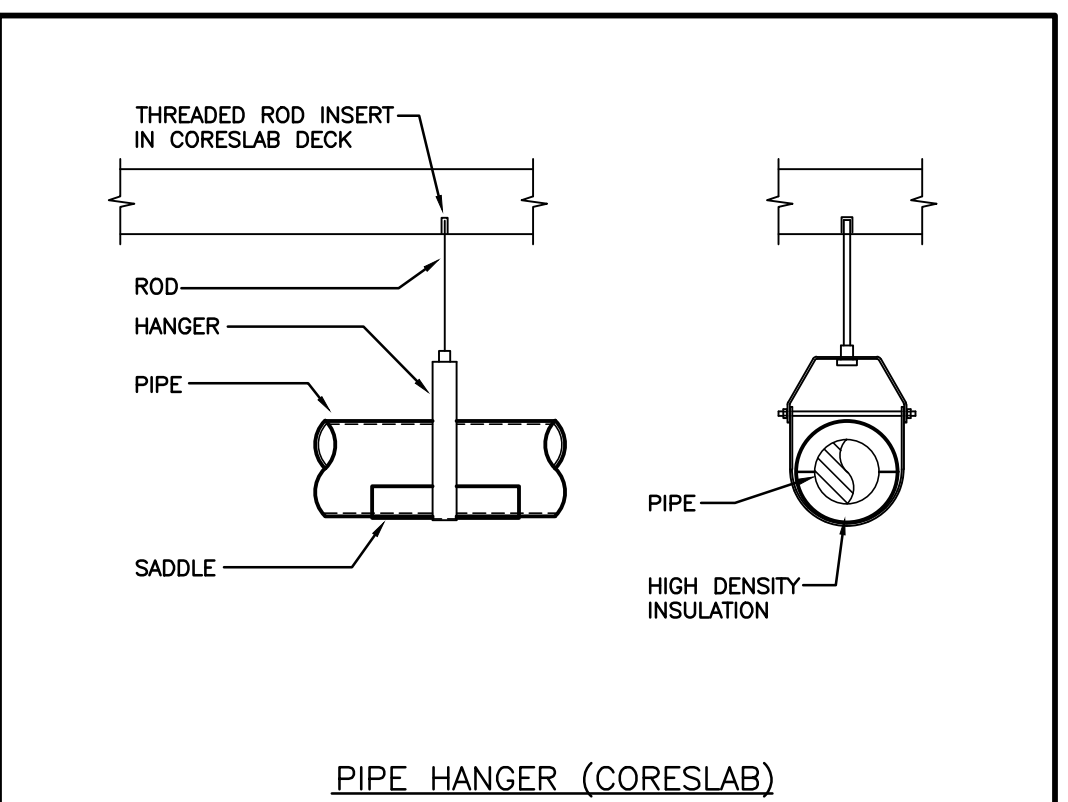
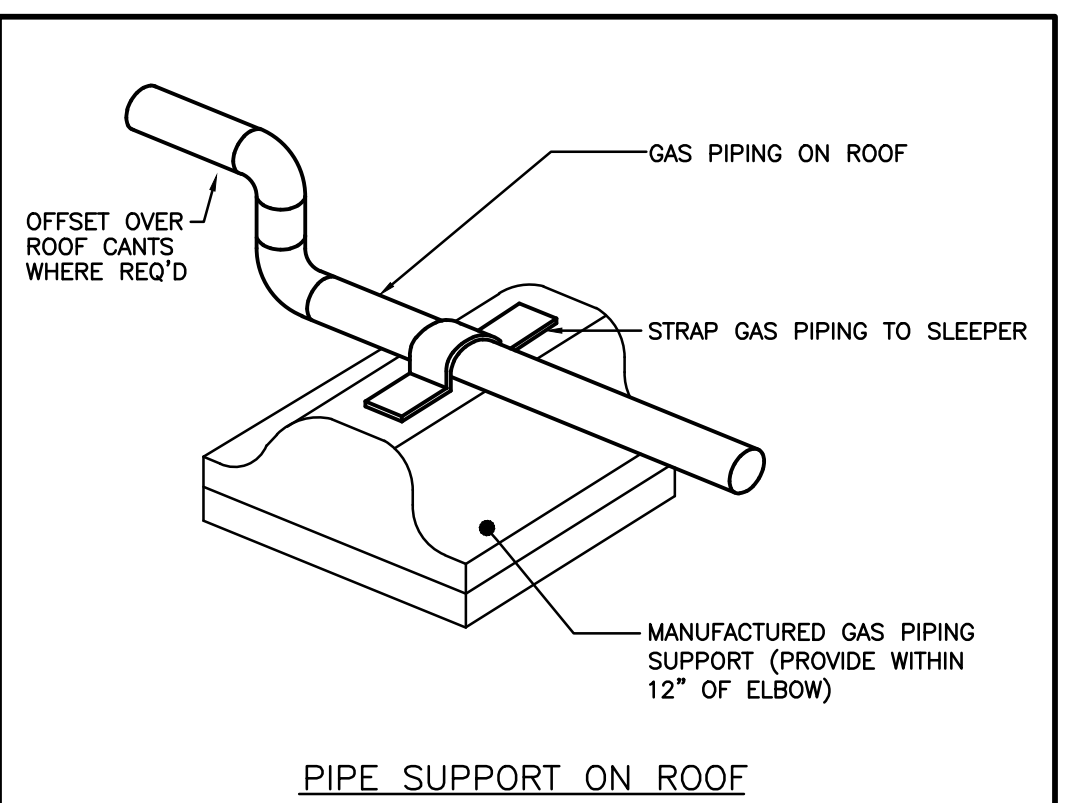
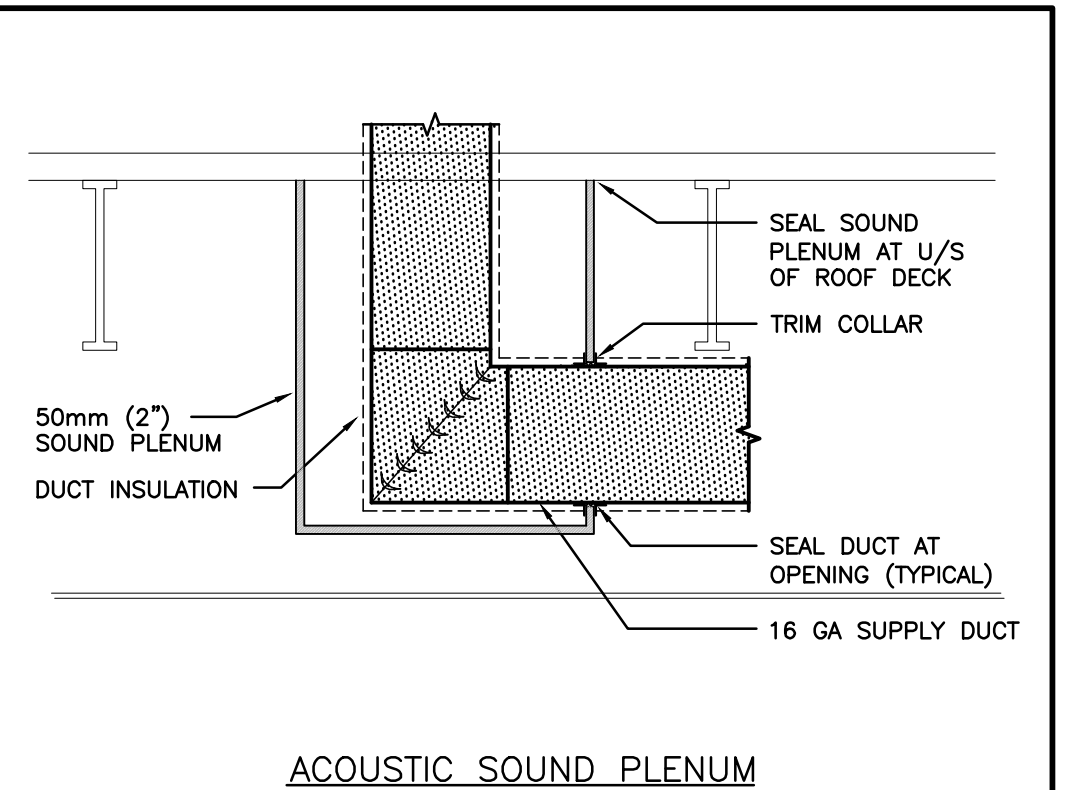
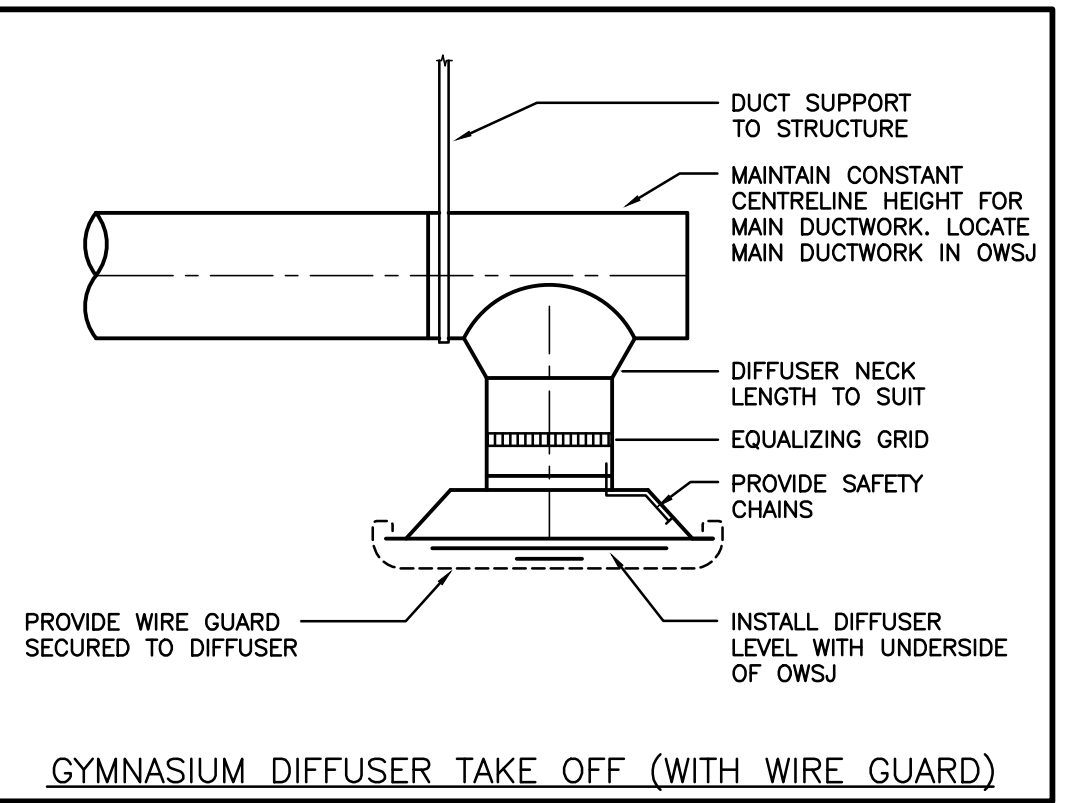
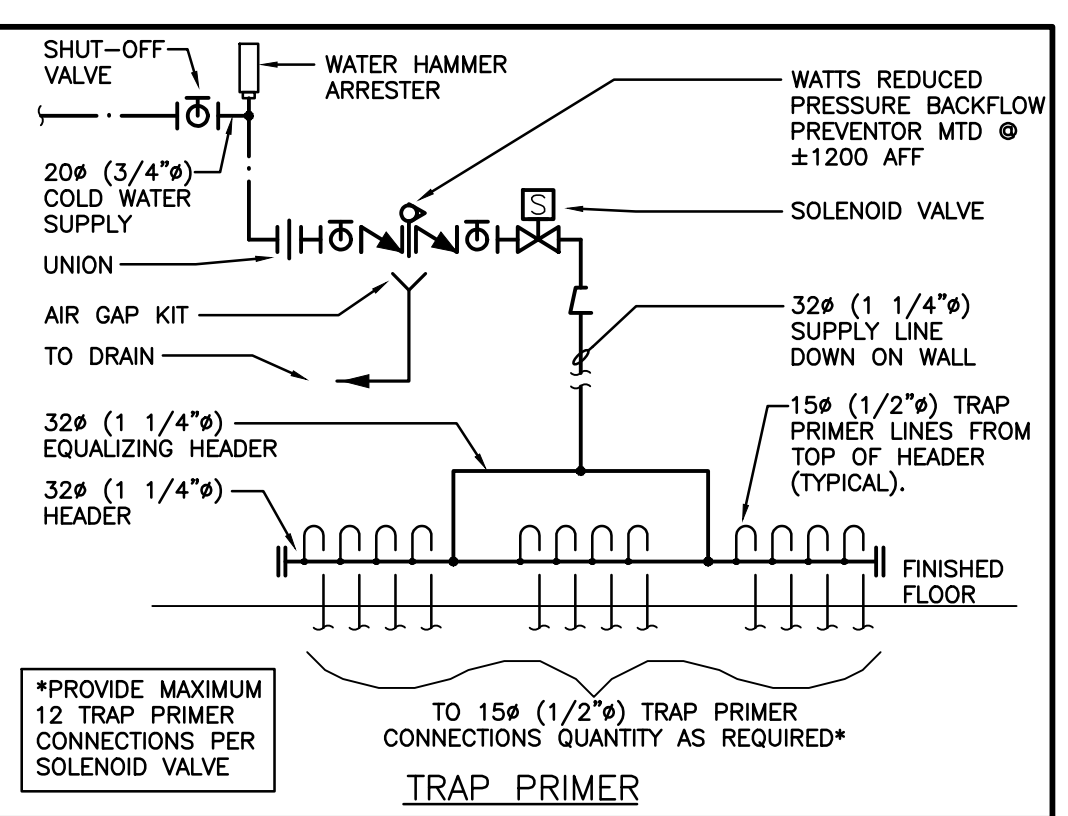
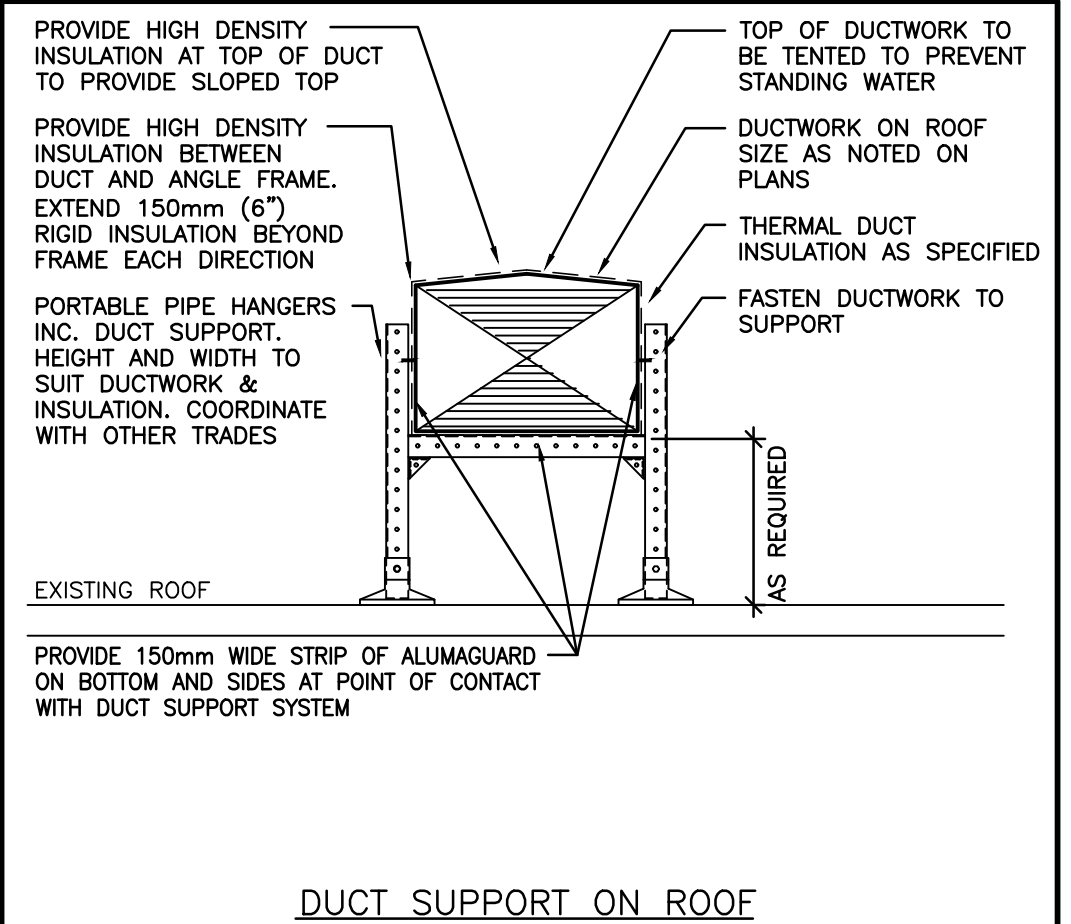
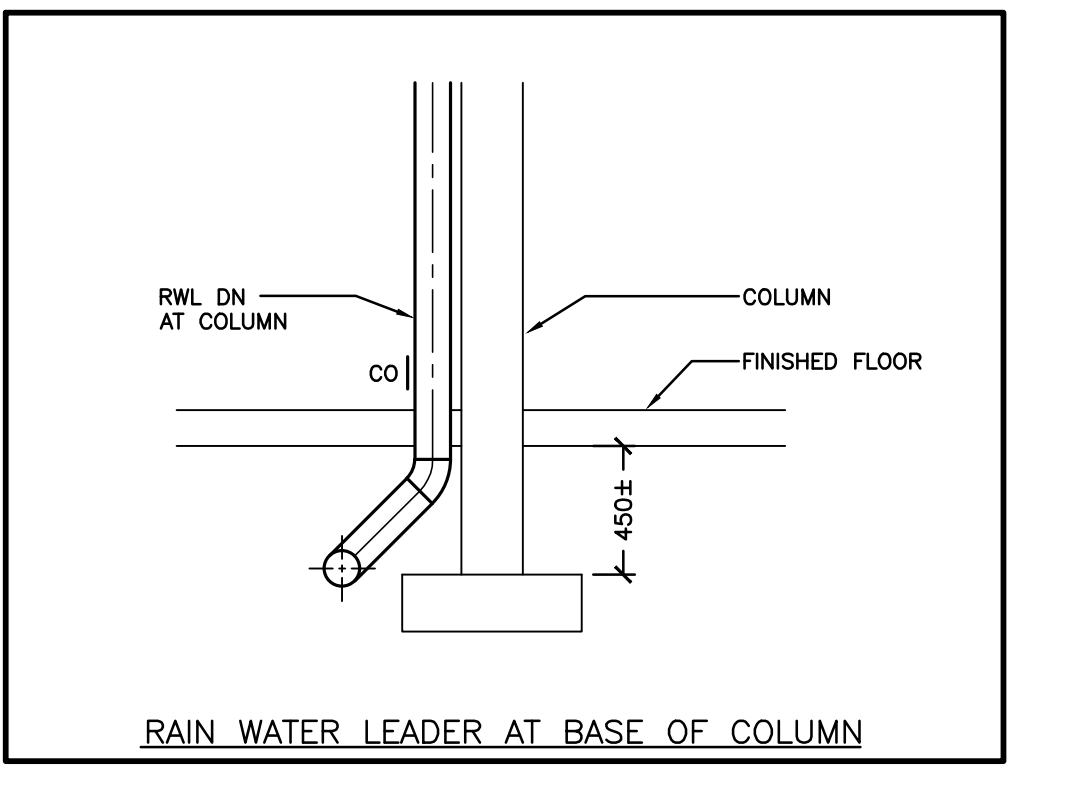
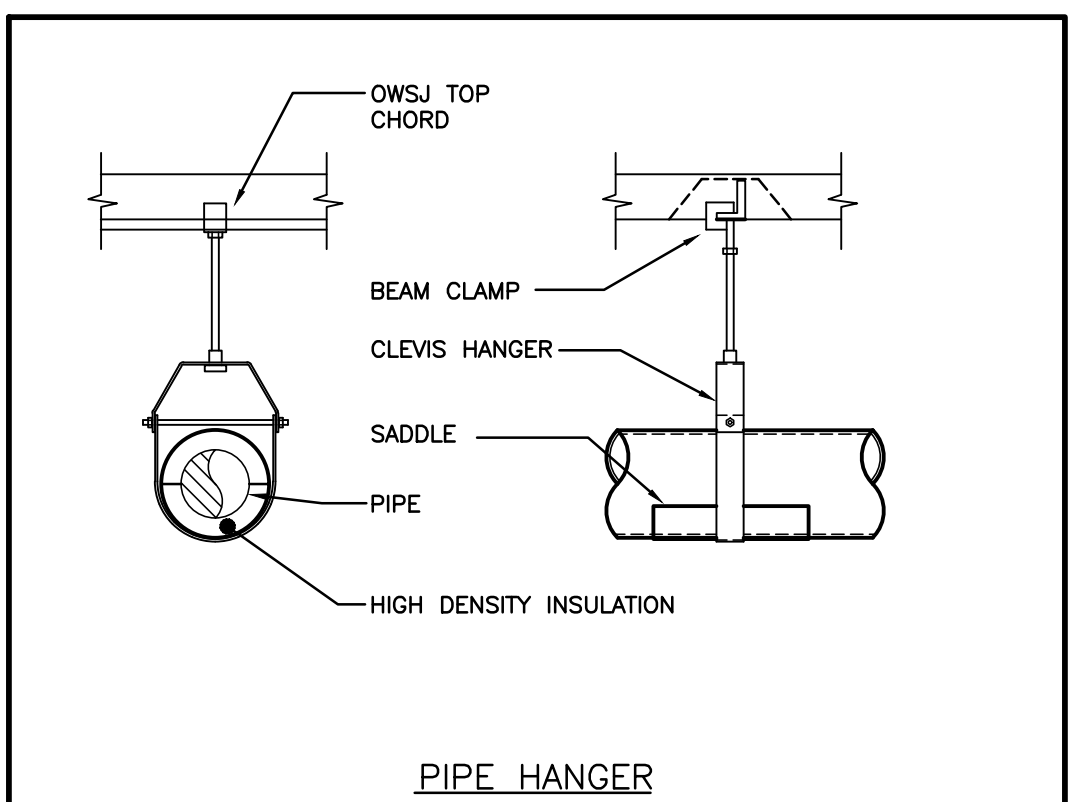
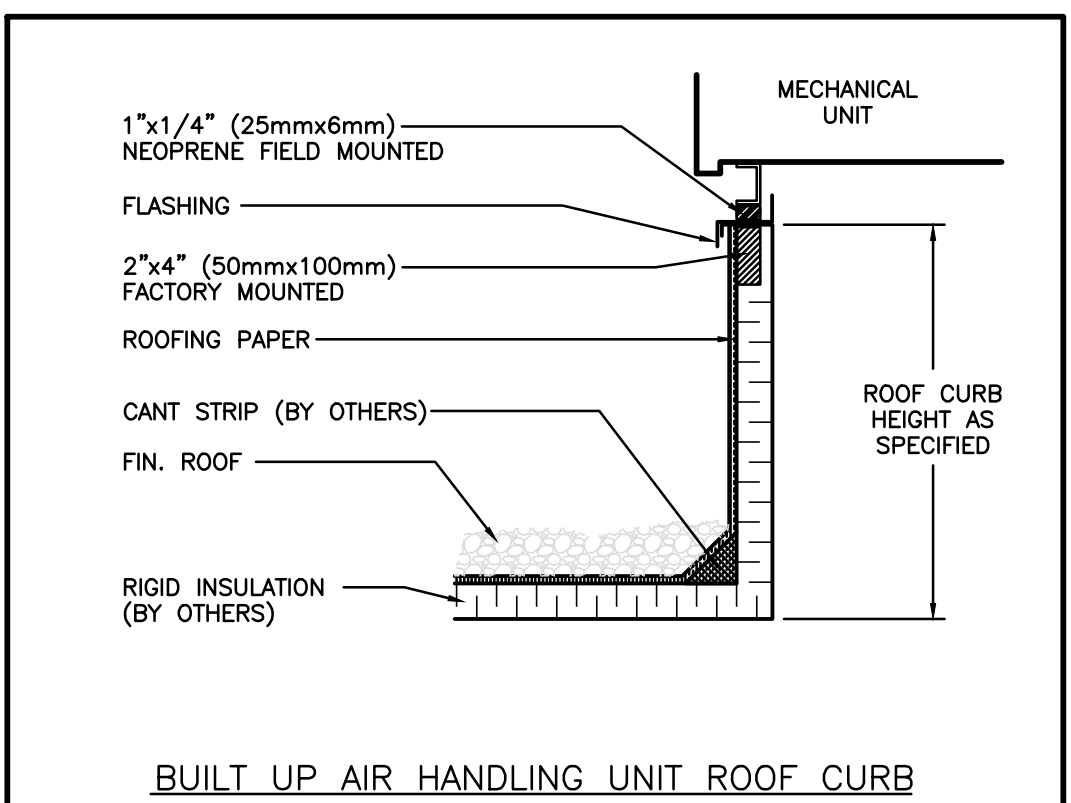
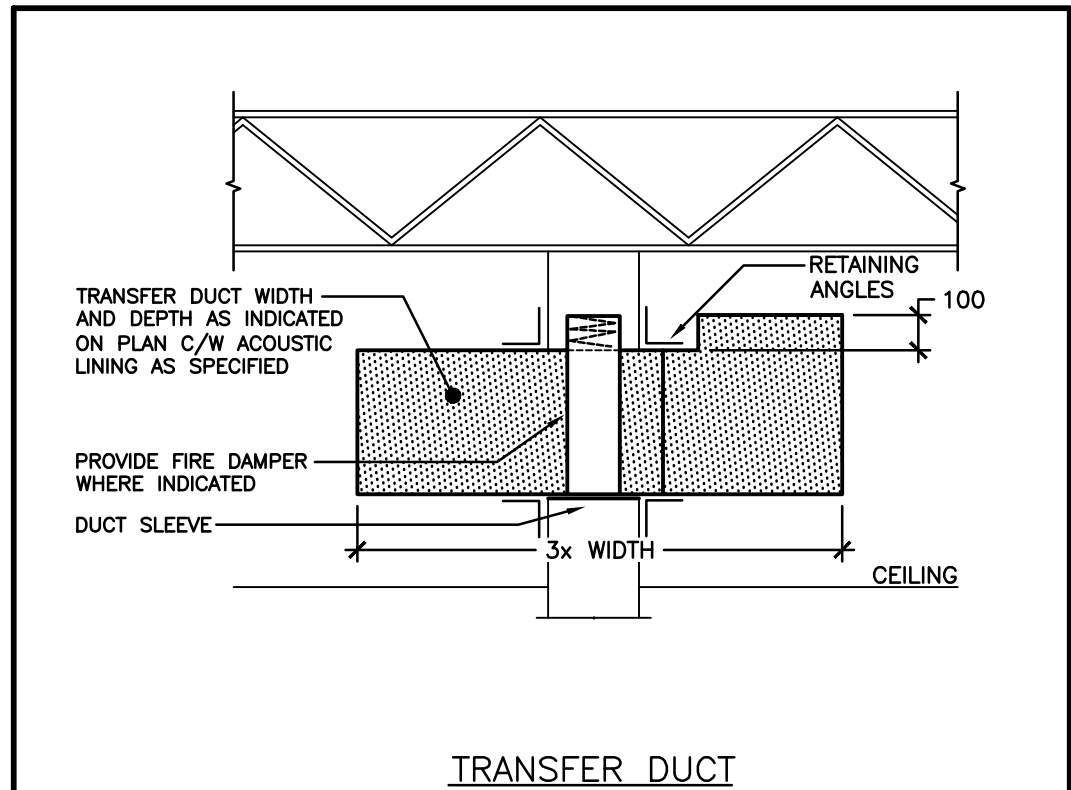
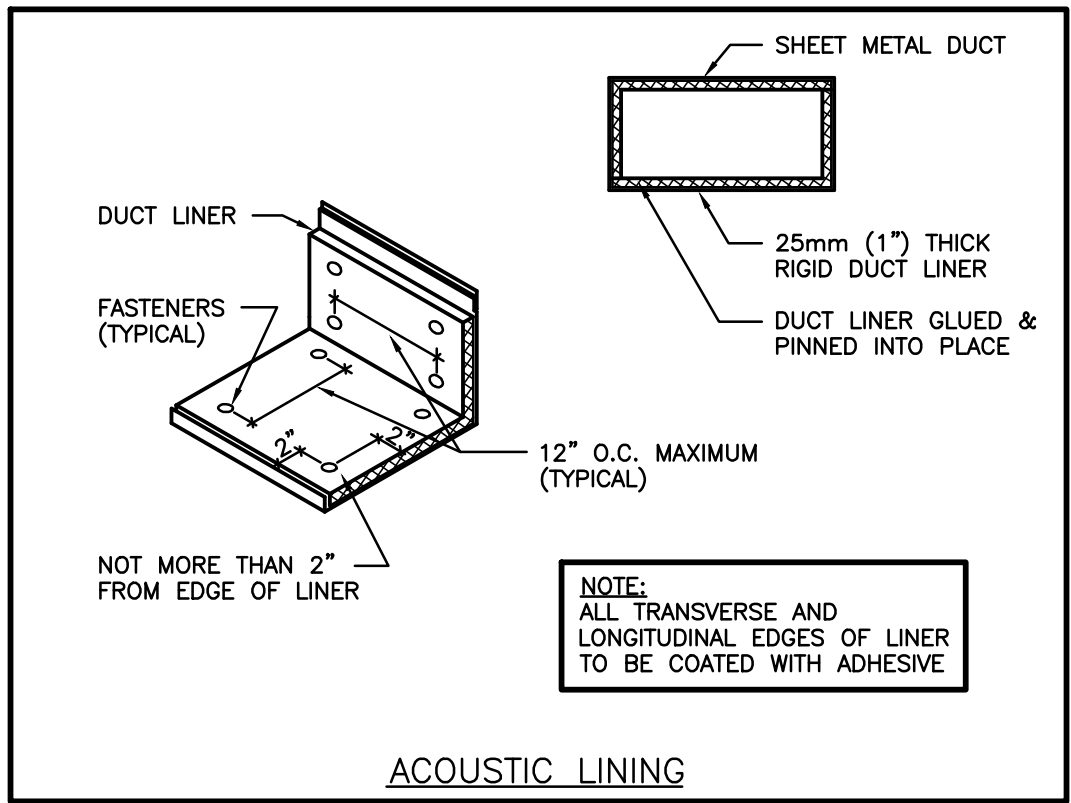
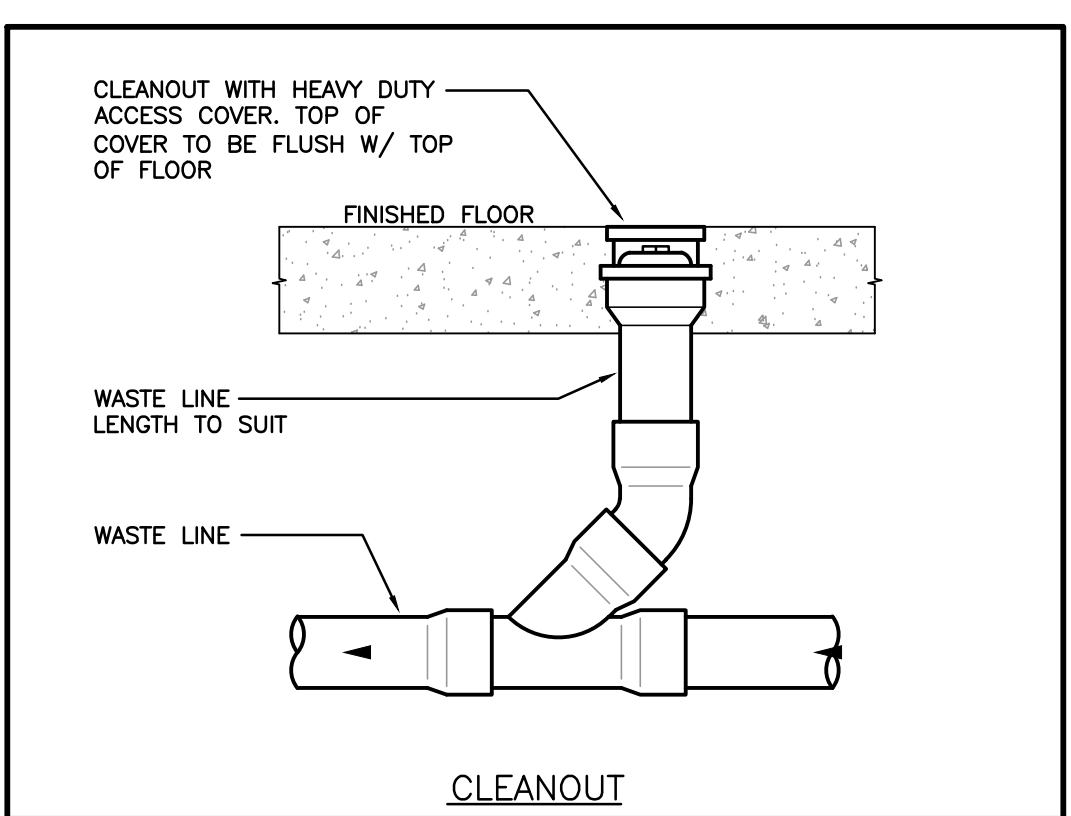
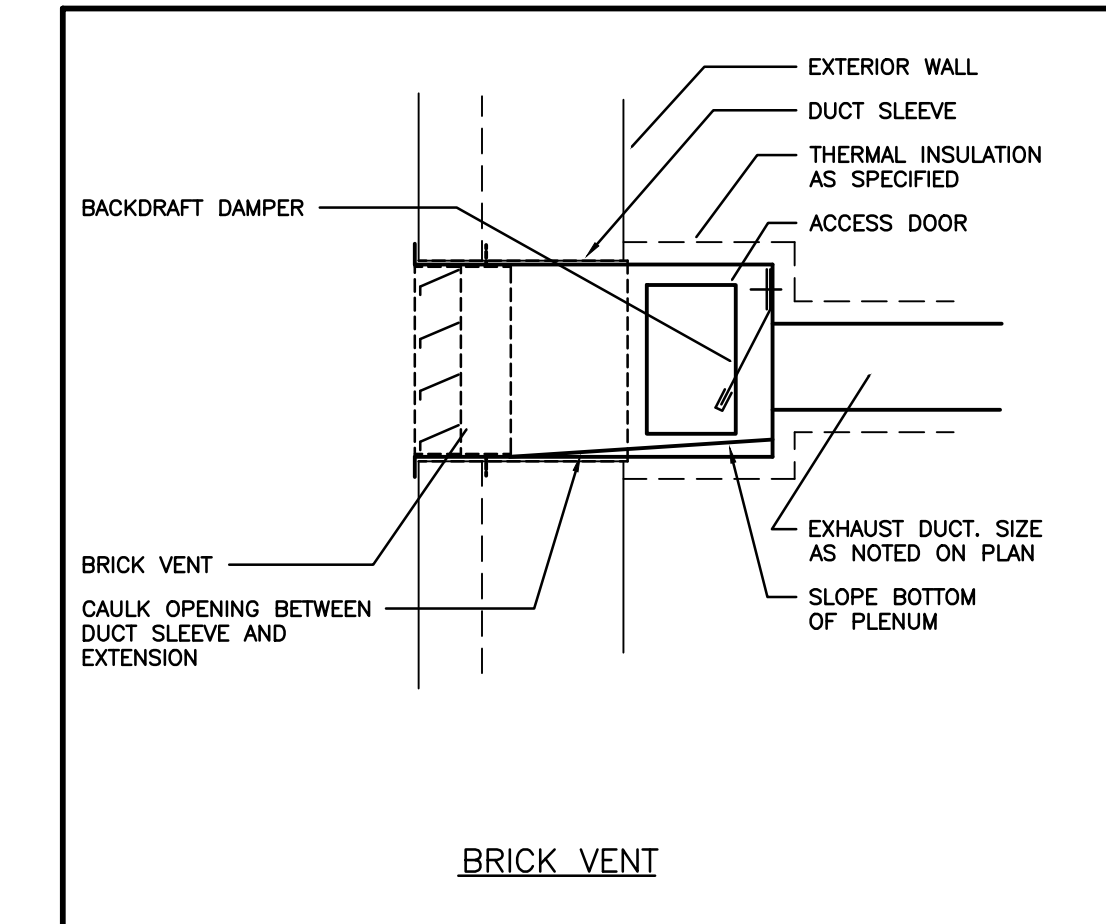
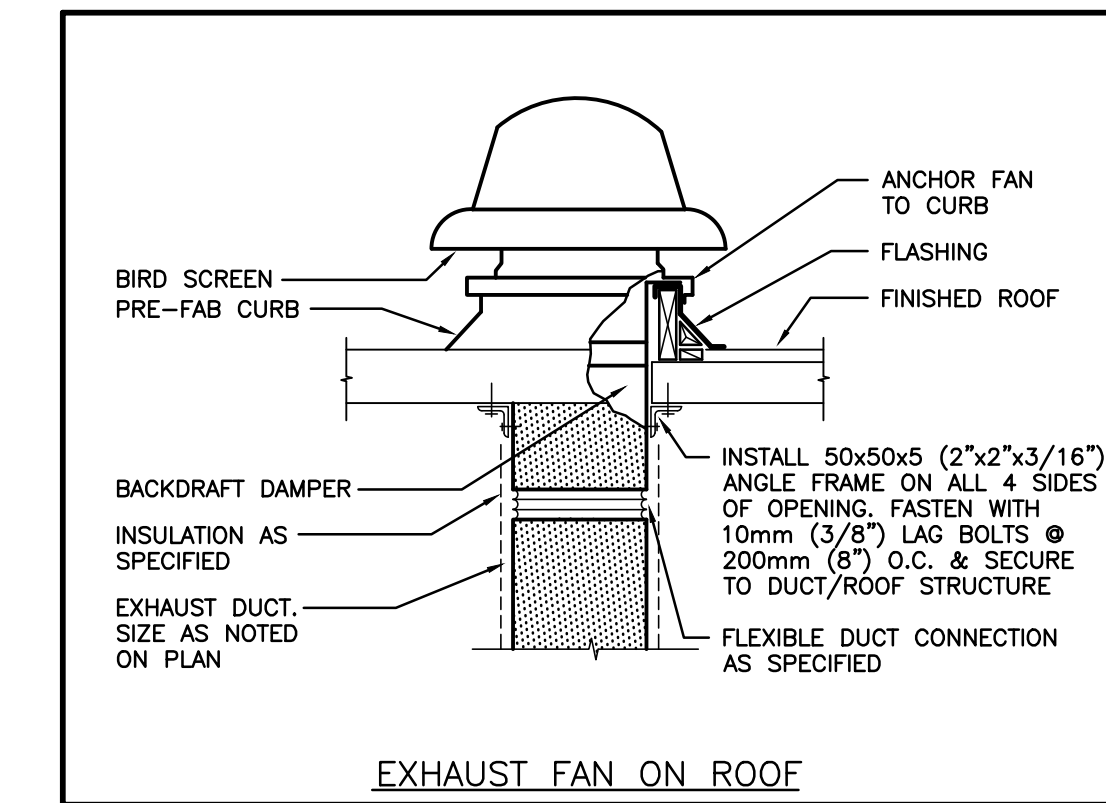
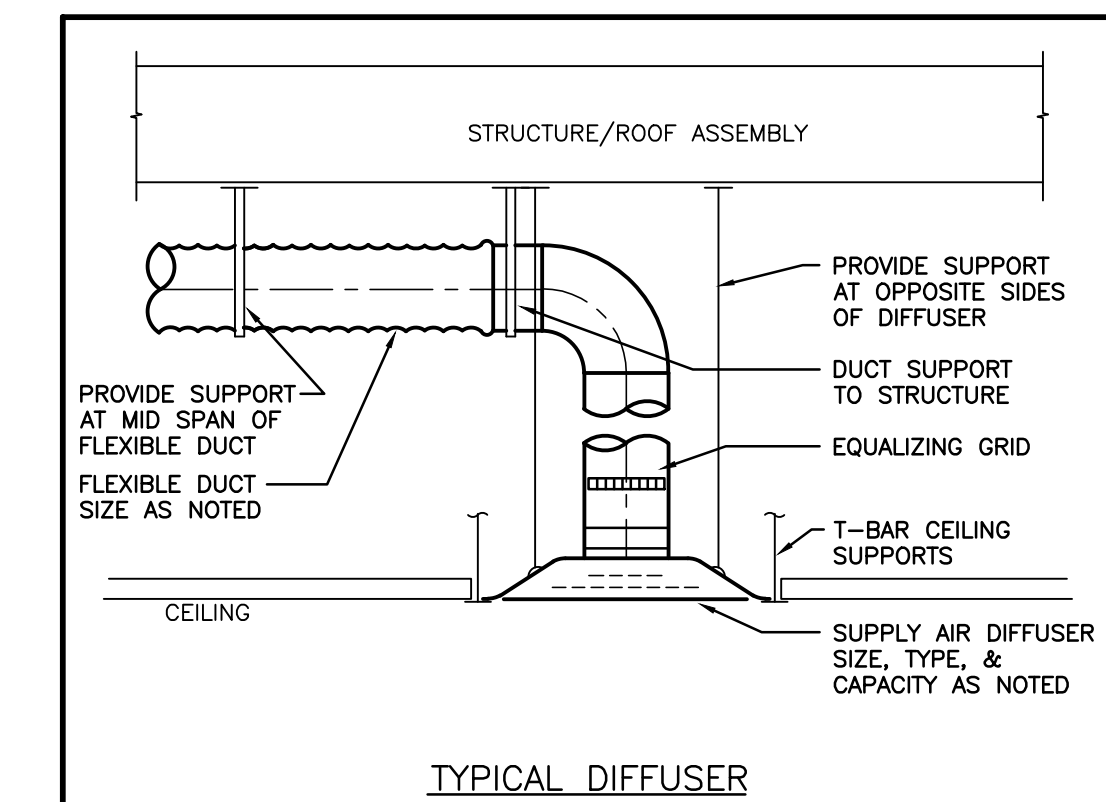
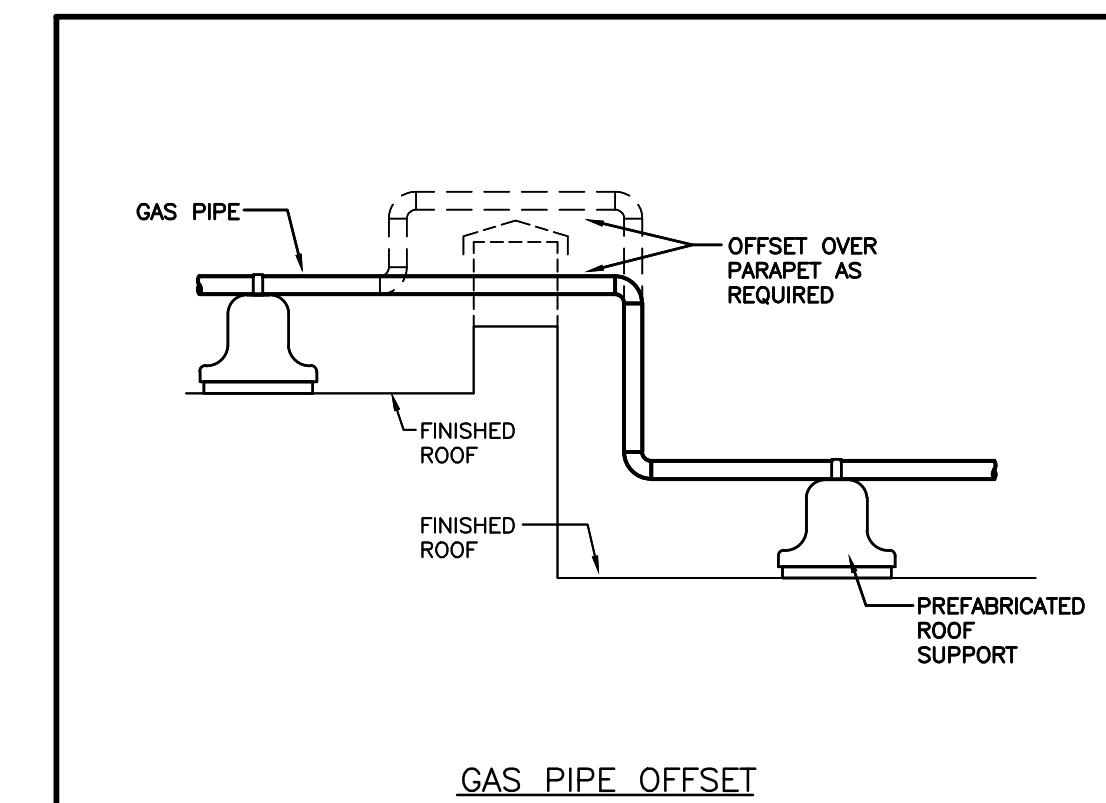
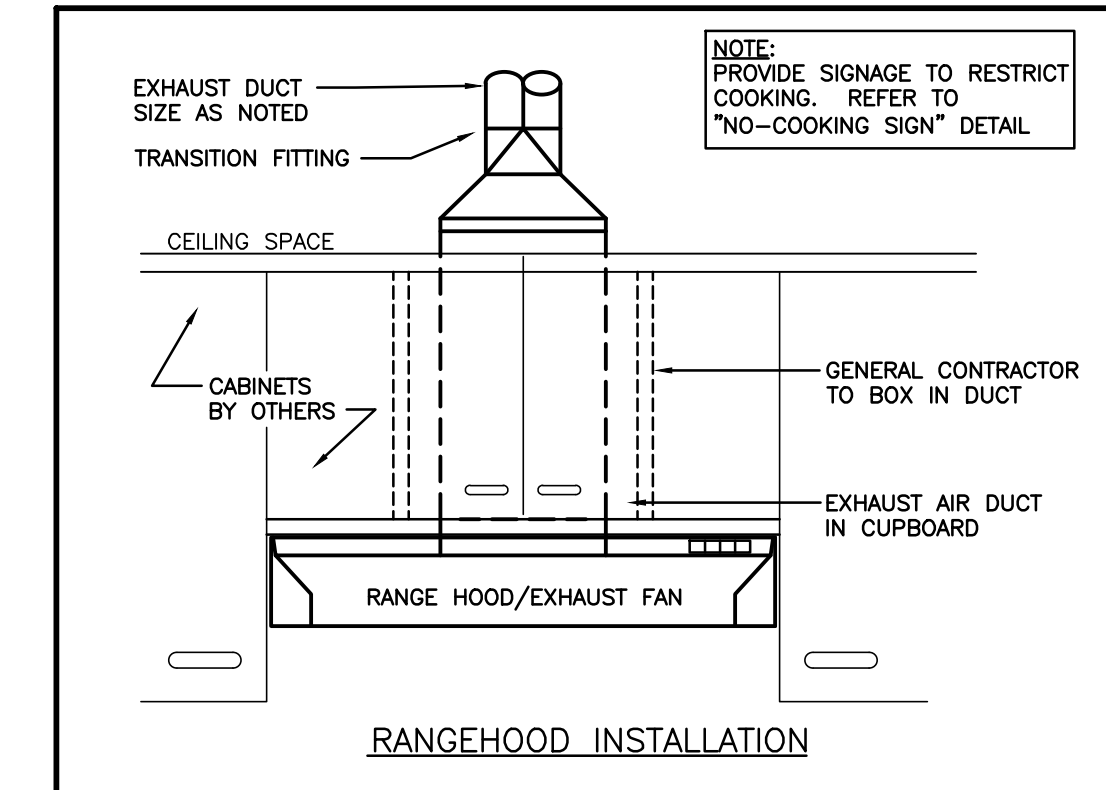
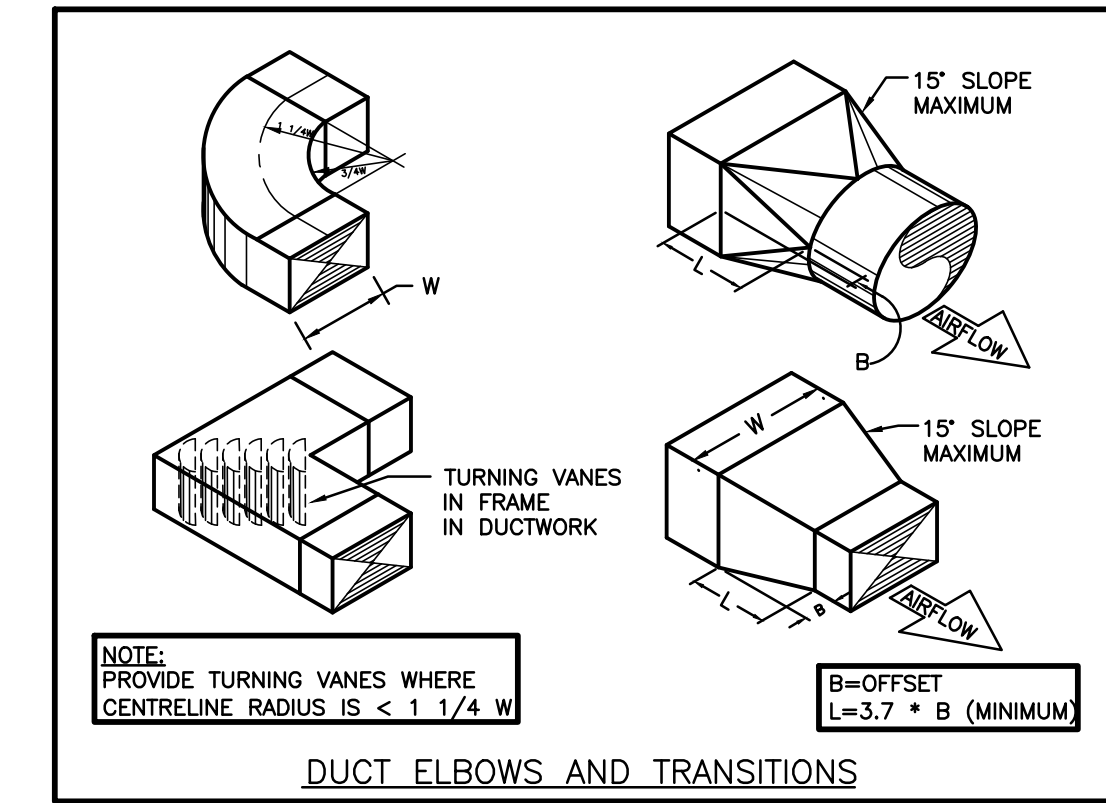
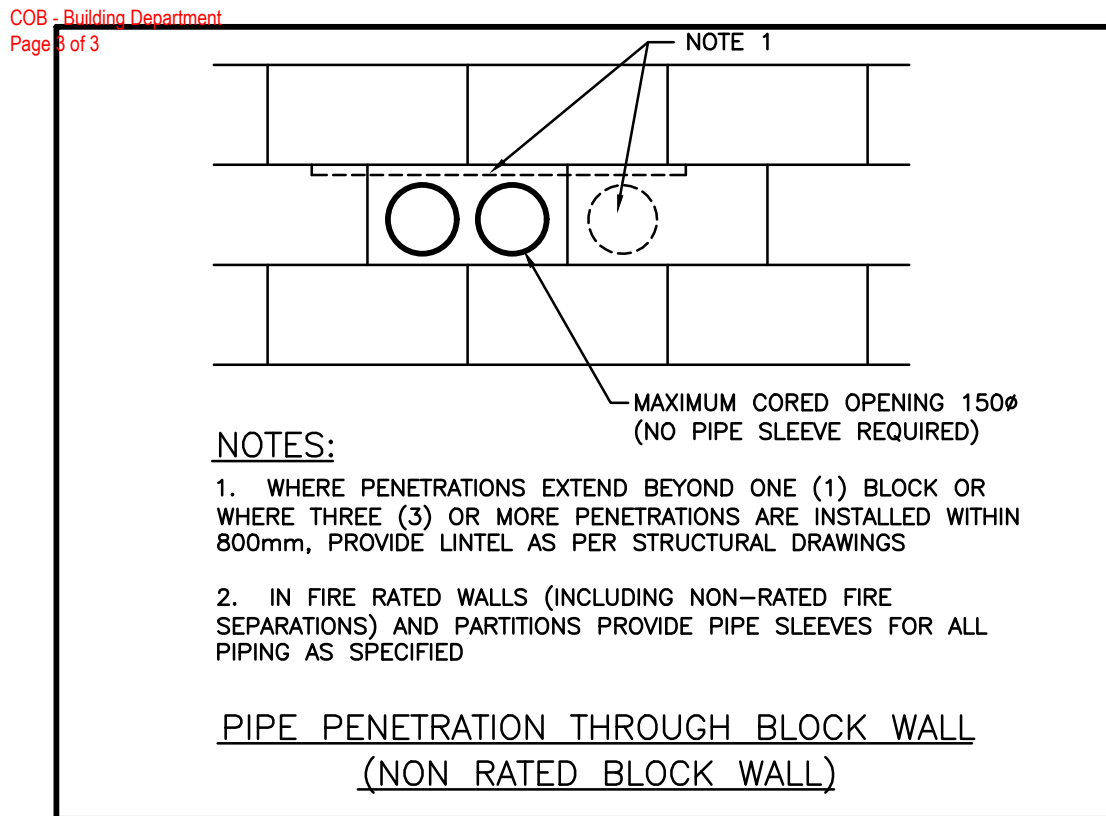
**SITE PLAN, LEGEND,  
& SCHEDULES**

Scale: AS NOTED	Date: JAN 2024
Drawn by: DF	Checked by: MW
Job No. <b>2314</b>	Drawing No. <b>M101</b>









No.	Revisions	Date
3	ISSUED FOR PERMIT	2024.04.19
2	ISSUED FOR SPA SUBMISSION	2024.02.27
1	ISSUED FOR SPA REVIEW SET	2024.02.06
No	Revision	Date