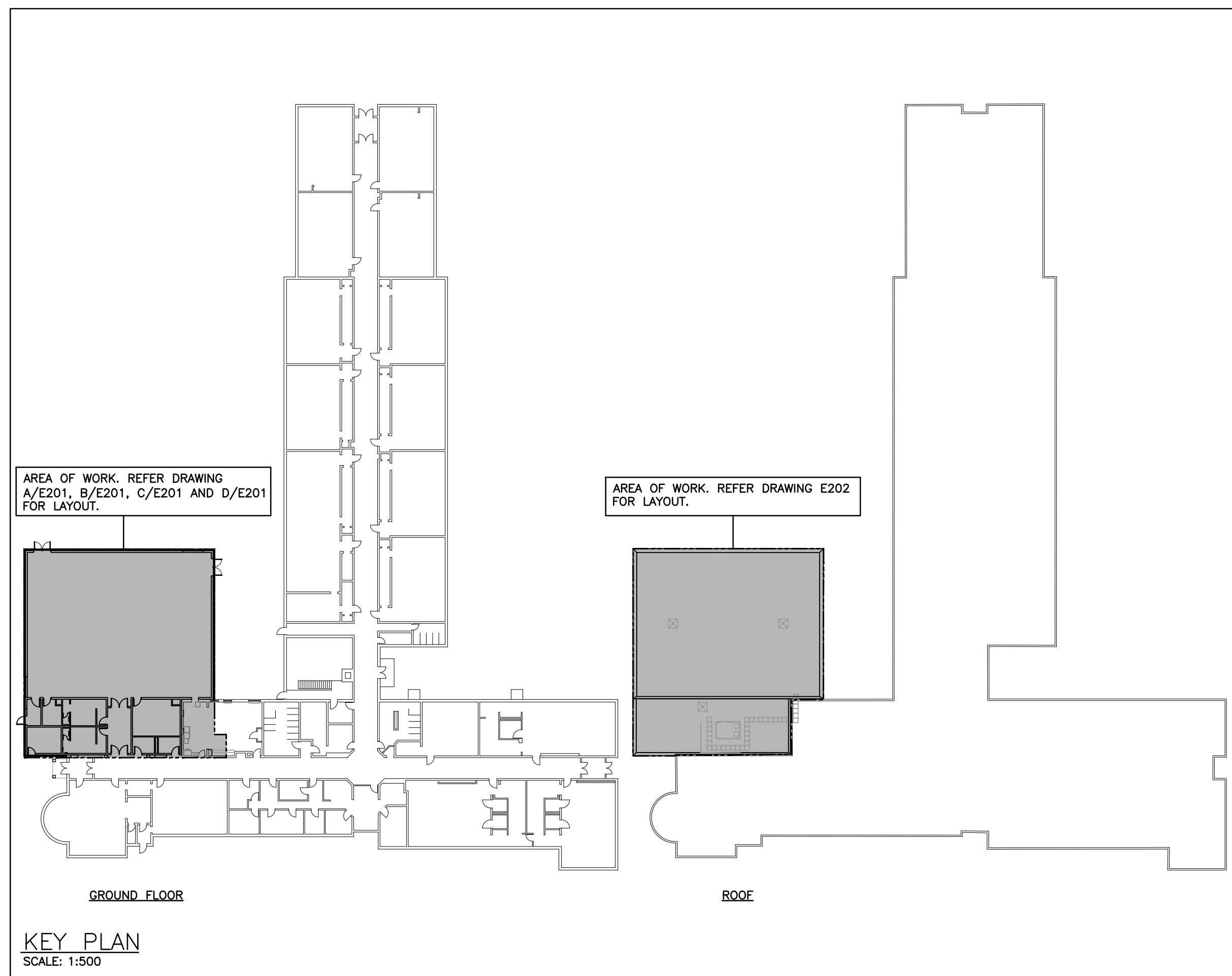


ELECTRICAL SYMBOLS		NOTE: ALL SYMBOLS MAY NOT BE USED	
LIGHTING		POWER	
	LIGHT FIXTURE TYPE AS INDICATED		WALL MOUNTED TAMPER RESISTANT RECEPTACLE (15A-120V)
	COMBINATION EMERGENCY/EXIT TYPE AS INDICATED (EM-X INDICATES BATTERY UNIT, DC-X INDICATES DC CIRCUIT, AND X-X INDICATES AC SOURCE CIRCUIT)		TAMPER RESISTANT RECEPTACLE MTD. ABOVE COUNTER (15A-120V)
	CEILING OR WALL MOUNTED LIGHT FIXTURE TYPE AS INDICATED		WALL MOUNTED T-SLOT RECEPTACLE (20A-120V)
	POLE MOUNTED LIGHT FIXTURE		T-SLOT RECEPTACLE MTD. ABOVE COUNTER (20A-120V)
	WALL MOUNTED EXIT LIGHT SHADING INDICATES FACE		DIRECT CONNECTION
	CEILING MOUNTED EXIT LIGHT ARROWS DENOTE DIRECTION SHADING INDICATES FACE		JUNCTION BOX
	SINGLE OR TWIN EMERGENCY LIGHTING FIXTURE		PULLBOX
	BATTERY UNIT WITH INTEGRAL EMERGENCY FIXTURE (EM-X INDICATES BATTERY UNIT, DC-X INDICATES DC CIRCUIT, AND X-X INDICATES AC SOURCE CIRCUIT)		PANEL AS DISCONNECTED
	SINGLE POLE SWITCH (3-WAY, 4-WAY, PULL-OUT, KEY-OPERATED, DIMMER, MOMENTARY RATED)		FUSED DISCONNECT
	WALL MOUNTED OCCUPANCY SENSOR DUAL-TECH. LINE VOLTAGE		DEAERTRIFICATION FAN
	CEILING MOUNTED MOTION SENSOR		HAND DRIVER
	WALL MOUNTED MOTION SENSOR		TIME CLOCK
	PUSH-BUTTON STATION (QUANTITY OF BUTTONS AS PER PLAN)	COMMUNICATIONS	
	POWER PACK		WIRELESS ACCESS POINT, PROVIDE 3" (19mm) C TO CABLE MANAGEMENT SYSTEM OR AS NOTED
	DIGITAL WALL STATION, "X" DENOTES NUMBER OF CONTROL BUTTONS IN SINGLE GANG		CS=COUPLING PROVIDE 3" (19mm) C TO CORRIDOR CEILING SPACE
FIRE ALARM			COMBINATION SINGLE VOICE/ SINGLE COMPUTER OUTPUT (UNLESS OTHERWISE NOTED C/W "C" (22mm) C TO CABLE MANAGEMENT SYSTEM. # INDICATES THE QUANTITY OF ACTIVE PARTS. LEFT VALUE ALWAYS INDICATES VOICE.
	HEAT DETECTOR (135 DEGREE RATE OF RISE AND FIXED TEMPERATURE)		PROGRAM BELL
	SMOKE DETECTOR (RL=RELAY BASE)		A-I-PHONE
	PULLSTATION		CEILING MOUNTED SPEAKER, PROVIDE 3" (19mm) C TO CORRIDOR CEILING SPACE
	COMBINATION HORN/STROBE		HORN SPEAKER
	END-OF-LINE RESISTOR		MICROPHONE OUTLET
	DOOR HOLD OPEN DEVICE		AUXILIARY ROUGH-IN FOR USE AS NOTED
	FIRE SMOKE DAMPER	ACCESS CONTROL	
	ELECTRIC STRIKE. CONFIRM ROUGH-IN WITH DOOR HARDWARE.		EXISTING EXISTING ITEM TO REMAIN UNDELETED
	CARD/FOB READER ROUGH-IN AS A SINGLE GANG BOX AT 1100mm AFF. C/W 13mm TO ELECTRIC STRIKE IN ADJACENT DOOR FRAME. CONFIRM ROUGH-IN WITH DOOR HARDWARE.		EXISTING EXISTING ITEM TO BE DELETED
	STANDARD CIRCUIT LABELING A-1-1		EXISTING EXISTING ITEM TO BE RELOCATED/IN RELOCATED POSITION
	POWER PANEL LABEL CIRCUIT INDICATION SWITCH LEG (IF APPLICABLE)		GROUND FAULT
	ELECTRIC HEAT		TAMPER RESISTANT
	FAN FORCED ELECTRIC HEATER (TYPE AS INDICATED)		CEILING MOUNTED
	UNIT HEATER (TYPE AS INDICATED)		WIRE GUARD
	PROTECTIVE COVER		NOTE INDICATOR
	MECHANICAL ITEM NO.		DISHWASHER
	DISHWASHER		MILLWORK
	FRIDGE		

SITE NOTES

- 1 INDICATES REMOVED EXISTING EXTERIOR FIXTURE. PROVIDE NEW FIXTURE AS INDICATED. WIRE TO EXISTING LIGHTING CIRCUIT. REMOVE EXISTING TIME CLOCK LOCATED IN MECHANICAL ROOM NEAR EXIT DOOR 6.



KEY PLAN  
SCALE: 1:500

**Halton District School Board**  
2050 Guelph Line,  
Burlington, ON.  
L7P 5A8

## Glenview Public School

### Gym Addition

143 Townsend Ave.,  
Burlington, ON. L7T 1Z1

Architect

sn/der

**Snyder Architects Inc.**  
100 Broadview Ave, Suite 301,  
Toronto, ON M4M 3H3  
t. 416.966.5444, w. snyderarchitects.



The contractor shall verify all dimensions and report all errors and discrepancies to the Consultant before commencement of the work. The drawings show general arrangement of services. Allowance for the existing building condition will permit. Obtain approval for relocation of service from Consultant before commencement of the work.

The drawings do not indicate all offsets fitting and accessories which may be required. Provide the same at meet and required conditions.

Drawings and specifications, etc., prepared and issued by the consultant are the property of the consultant and must be returned at the completion of the project. These documents are to be duplicated and copied without the consent of the Consultant.

Do not scale this drawing.

© 2024 DEI Consulting Engineers Inc.

**ALL CONSTRUCTION TO MEET ONTARIO BUILDING CODE REQUIREMENTS**

RECEIVED  
MAY 03 2024

CITY OF BURLINGTON  
BUILDING DEPARTMENT

ALL ELECTRICAL WIRING MUST BE  
INSPECTED BY THE ELECTRICAL SAFETY  
AUTHORITY. SEPARATE INSPECTION  
APPLICATIONS (PERMITS) MUST BE FILED.  
FOR MORE INFORMATION PLEASE CALL  
ELECTRICAL SAFETY AUTHORITY  
CUSTOMER SERVICE CENTRE

PHONE  FAX  
1-877-372-7233 1-800-667-4278

**The ARCHITECT and/or PROFESSIONAL ENGINEERS** shall be responsible for the field review of the building during construction to ensure conformance to the approved design. Field review reports must be submitted at least monthly to the Burlington Building Department. Prior to occupancy, the Architect and/or Professional Engineers must also submit a signed statement that, based upon their field review of the work falling within their discipline, they are of the opinion that such work has been carried out in general accordance with the approved plans.

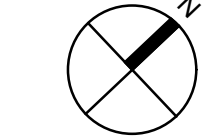
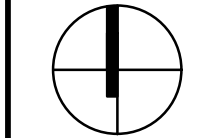
CITY OF BURLINGTON  
BUILDING SERVICES

**REVIEWED**

DATE **JULY 12, 2024**

PERMIT NUMBER	24 008616
EXAM	112

N



Project North

True North

[illegible]

Drawing Title:

LEGEND, SITE PLAN,  
NOTES AND KEY  
PLAN

Scale: AS NOTED	Date: JAN 2024
-----------------	----------------

Drawn by: SE

checked by: RV

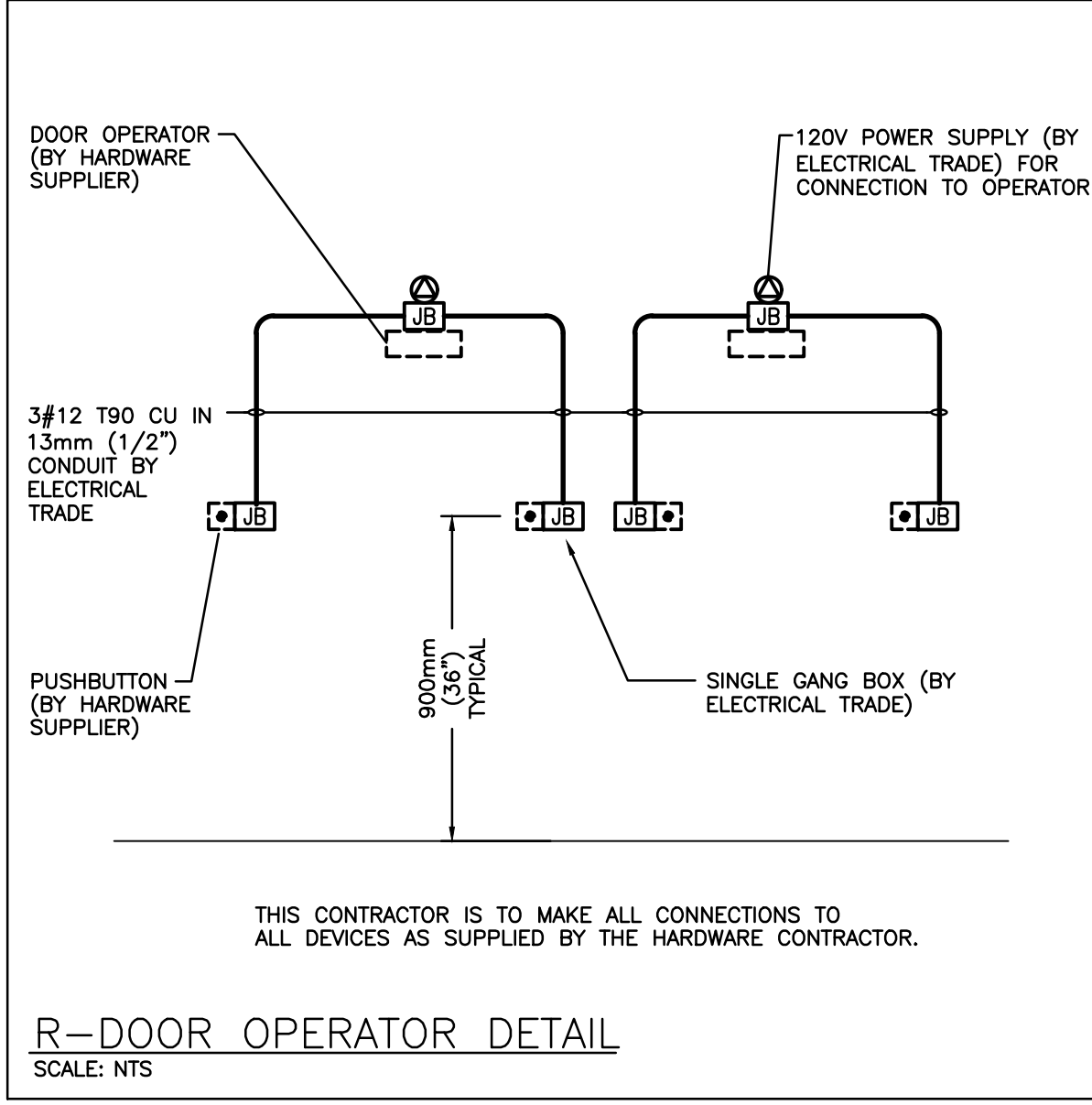
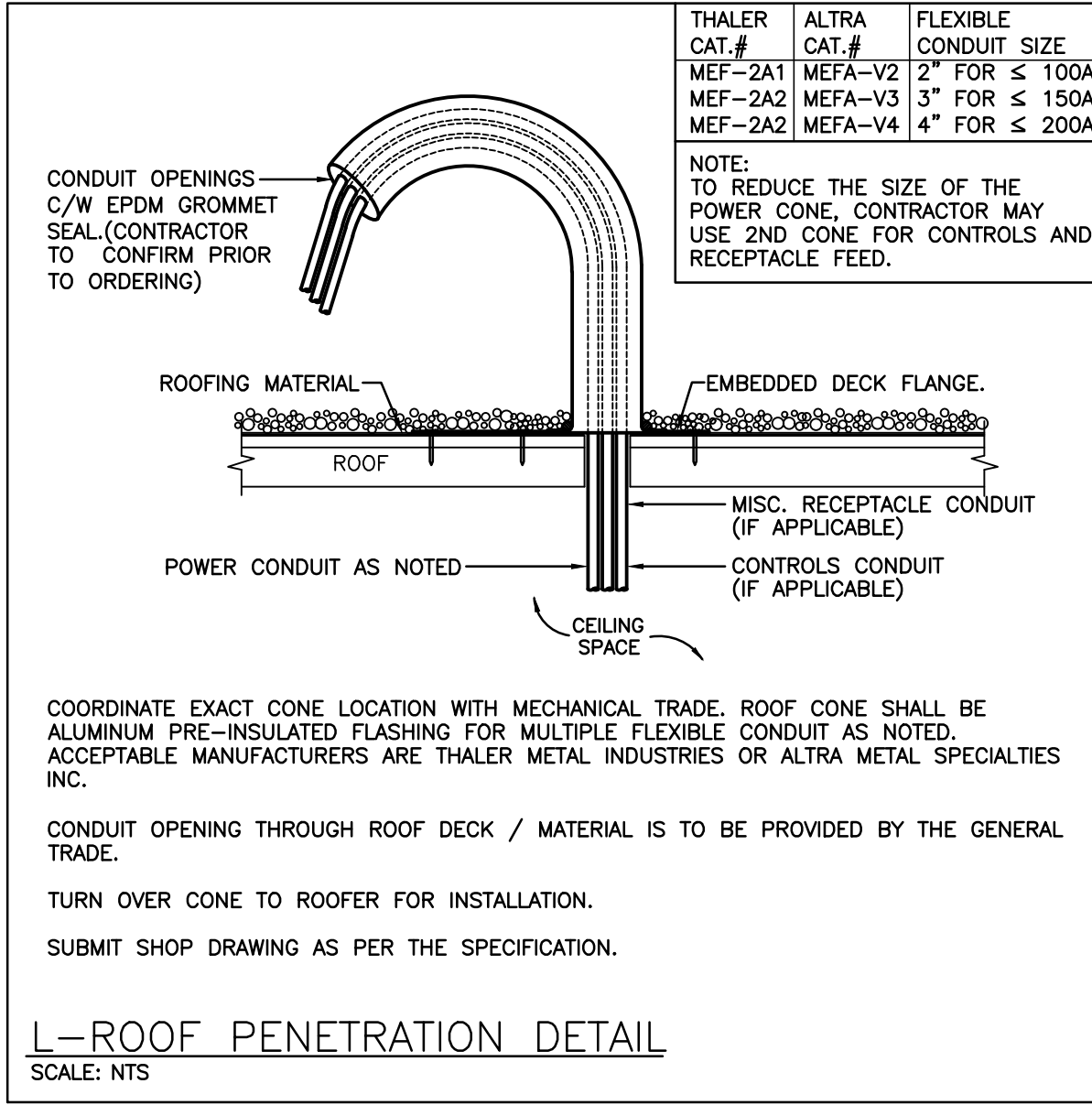
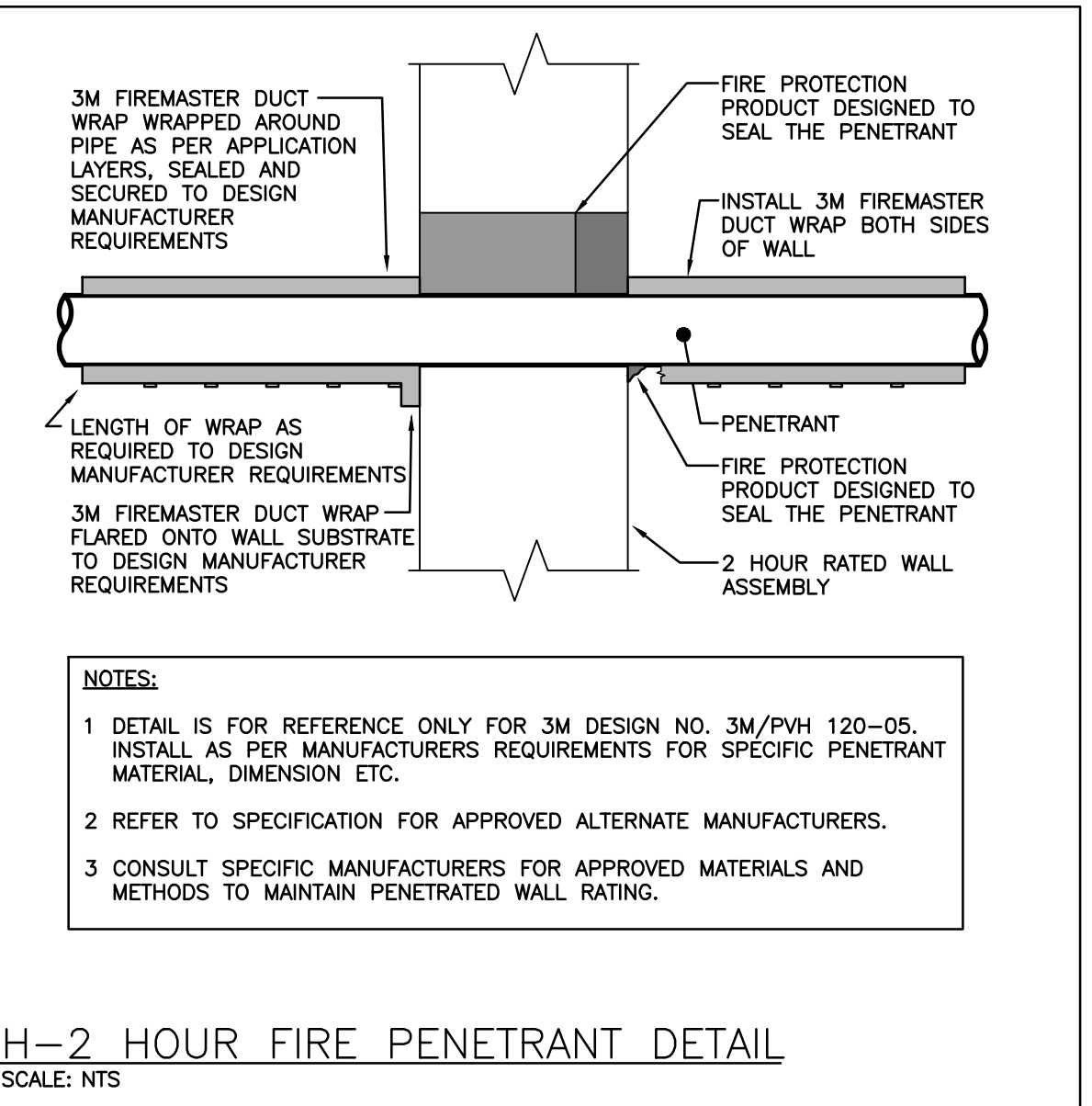
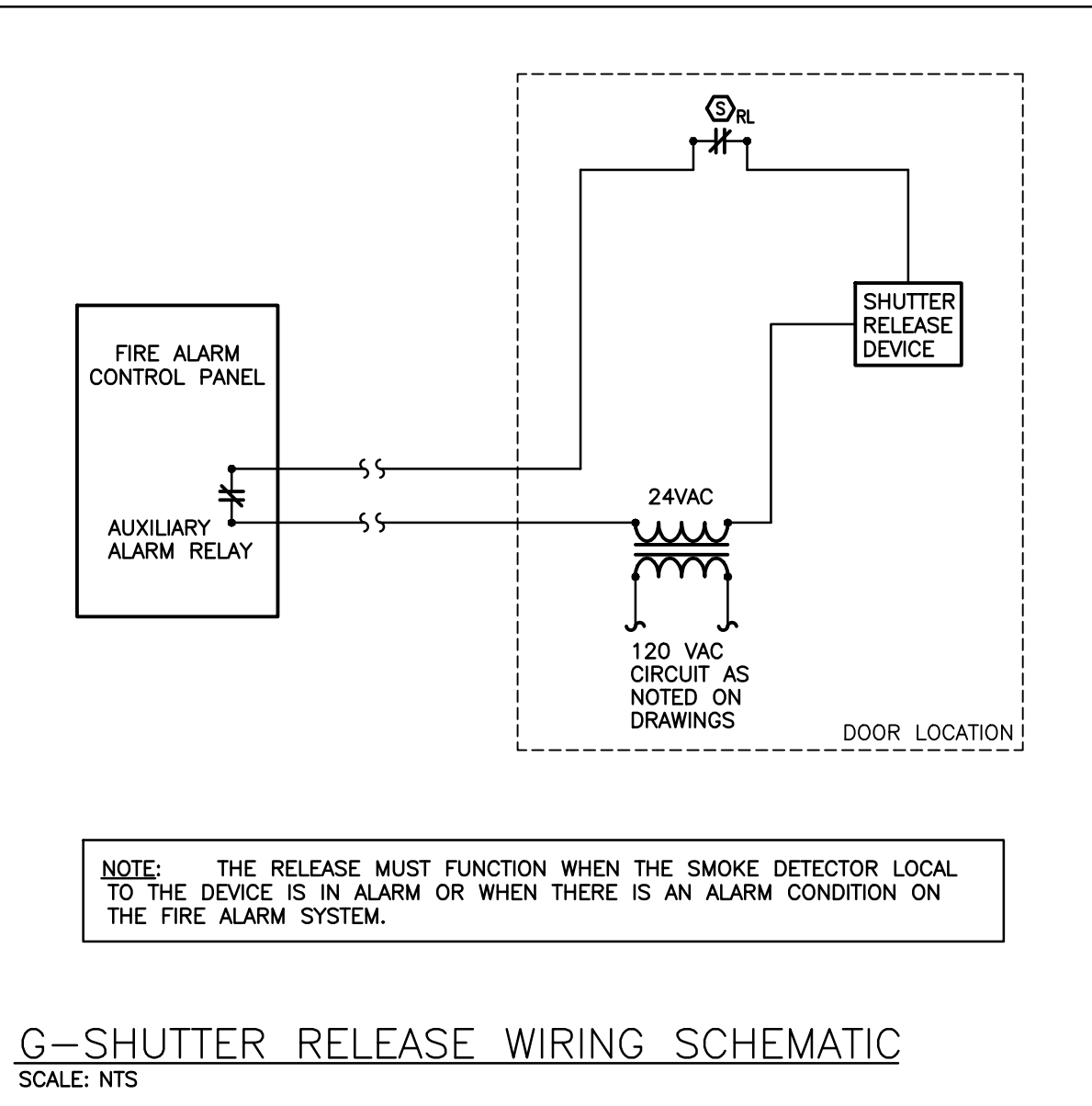
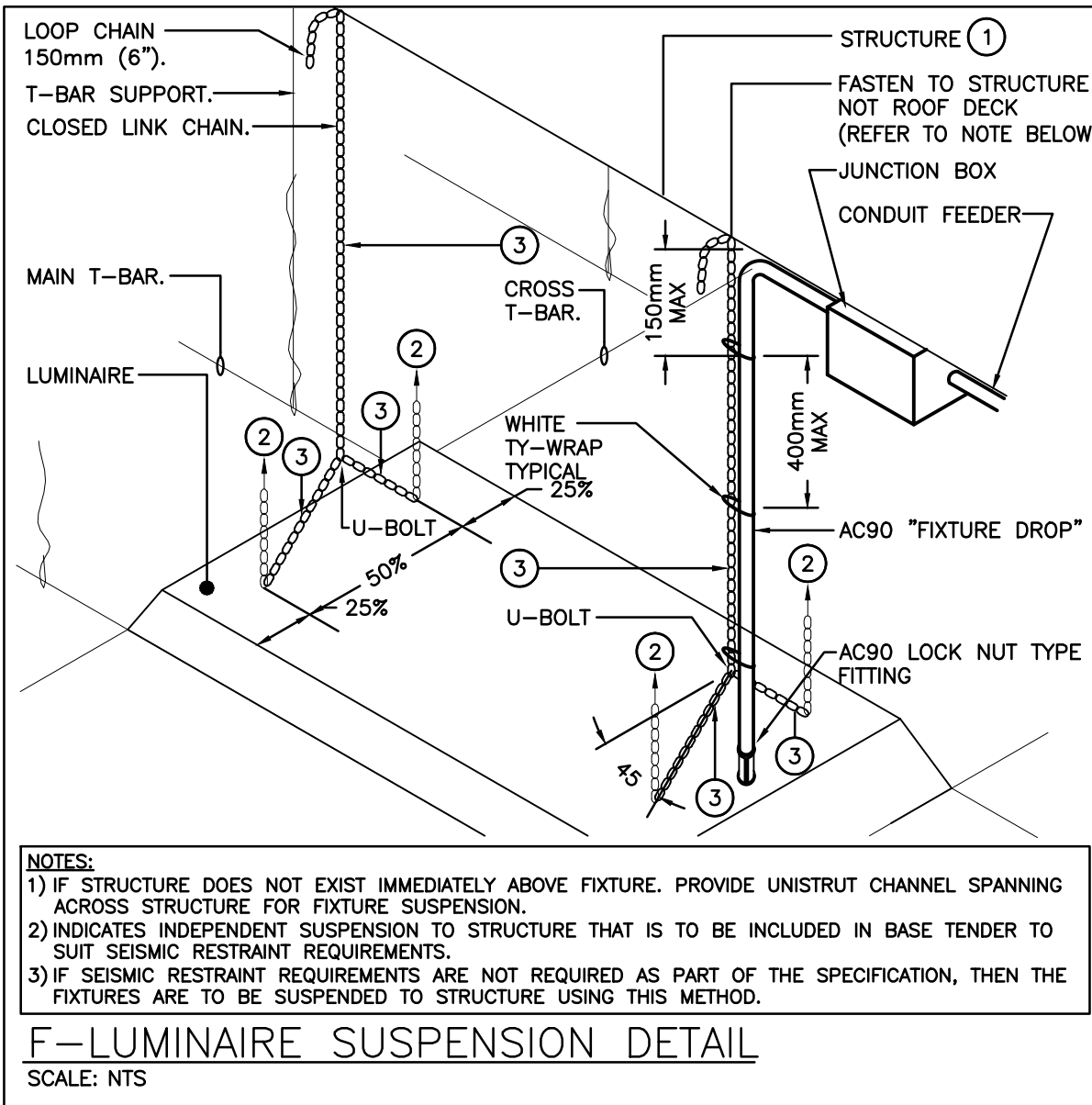
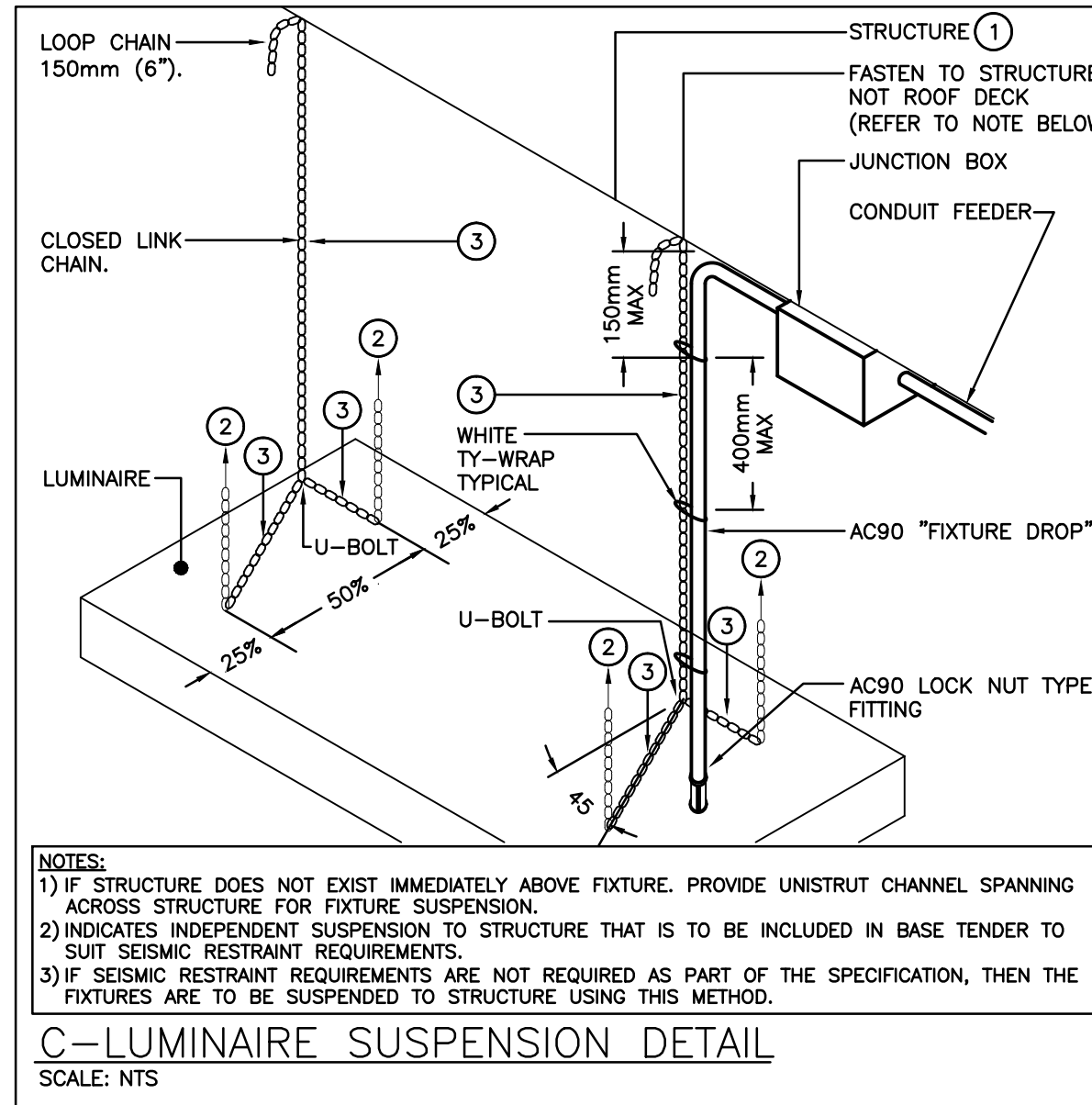
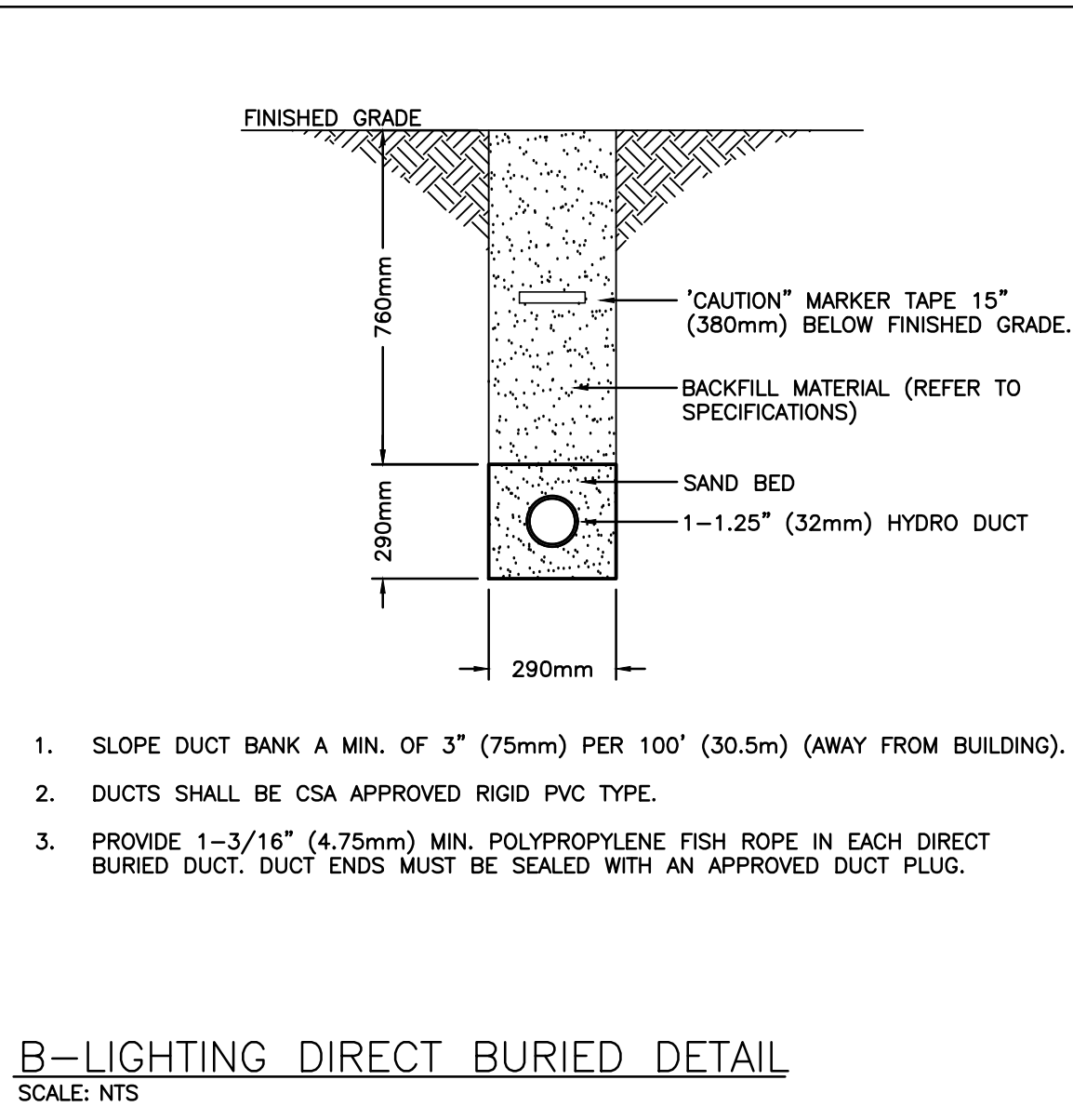
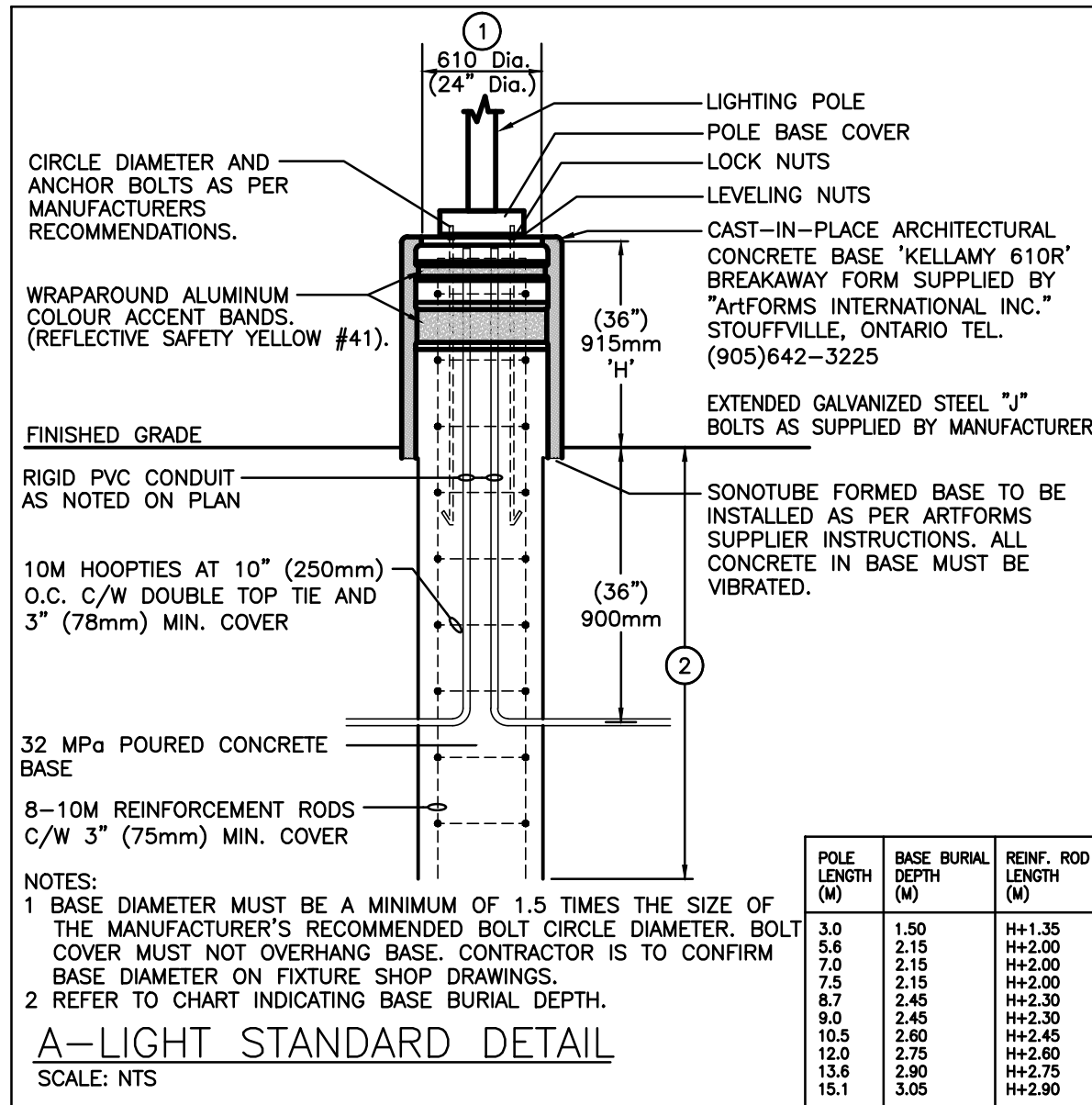
Job No. \_\_\_\_\_

Drawing No. **Fig. 1**

2314

**E101**  
COB - Building Depart





LIGHTING CONTROL SYSTEMS SEQUENCE OF OPERATION				
Space Type	Room Names	Control Sequence / Control Device(s)	Control System	DETAIL REFERENCE
Gymnasium	GYMNASIUM 139	Sequence: L2-3: AUTOMATIC ON LIGHT OUTPUT/AUTOMATIC OFF THROUGH OCCUPANCY SENSOR/MANUAL OFF THROUGH WALL POD/STATION. L2-1, L2-2: MANUAL ON THROUGH WALL POD OR STATION/AUTOMATIC OFF THROUGH OCCUPANCY SENSOR/MANUAL OFF THROUGH WALL POD.	DIGITAL OCCUPANCY CONTROL SYSTEM	1. 139
Washrooms/Change Rooms	TYPICAL	Sequence: AUTOMATIC ON/AUTOMATIC OFF THROUGH OCCUPANCY SENSOR/MANUAL OFF THROUGH WALL POD/STATION AS INDICATED ON DRAWINGS. OCCUPANCY SENSOR SET TO 10 MINUTES DELAY ONCE THE ROOM HAS BEEN VACATED, THE LIGHTS WILL AUTOMATICALLY TURN OFF.	DIGITAL OCCUPANCY CONTROL SYSTEM	2. 139
NOTES:				
1. ALL INDICATED TIMES SHALL BE COORDINATED WITH SCHOOL BOARD REPRESENTATIVE. REPORT ANY DISCREPANCIES BETWEEN SEQUENCE AND CONTROL DEVICES TO ENGINEER PRIOR TO PROGRAMMING. COORDINATE PROGRAMMING OF ANY SPACES NOT LISTED WITH BOARD REPRESENTATIVE (EXCLUDING SERVICE ROOMS).				
2. REFER TO SPECIFICATIONS FOR FURTHER INFORMATION REGARDING COMMISSIONING AND 3RD PARTY FUNCTIONAL TESTING OF LIGHTING CONTROL SYSTEMS.				

HEATER SCHEDULE		FOR INFORMATION REGARDING EQUAL MANUFACTURERS REFER TO SPECIFICATION.
Item	Manufacturer/Catalog Number	
A	1500 WATT 208 VOLT SINGLE PHASE FAN HEATER C/W SURFACE MOUNTING BOX, INTEGRAL TAMPERPROOF THERMOSTAT AND STANDARD FACTORY FINISH TO SUIT ARCHITECT. OULET CAT. #04C2000-T C/W #KIT-04C-B51	
B	5000 WATT 208 VOLT SINGLE PHASE SUSPENDED UNIT HEATER C/W STANDARD FACTORY FINISH TO SUIT ARCHITECT AND THERMOSTAT. OULET CAT. #04S5000BAM C/W #KIT-04S-T.	

EQUIPMENT WIRING SCHEDULE													E = ELECTRICAL M = MECHANICAL O = OTHERS																							
Mechanical Item	Description	Provided By	Electrical Data			Magnetic	Starter			Ctrl Device	Isolating Device	Remote Items					Other	Interlock																		
			Voltage	Size hp/kVA/amps	Phase		Manual	Combination	Conductor			VFD	Hand/Off/Auto	On/Off Selector	High/Low/Off	Pilot Light			Disconnect	WP Disconnect	Breaker/Fuse	Starter/Dual Wired by	Thermostat	RA Thermostat	Programmable Time Clock	Variable Speed Control	Current Sensor	Duct Voltage Relay	Interval Timer	WP System Control Panel	Smoke Control System Panel	Control Panel	Wind by	Bag Auto System	Wind By	Miscellaneous 1
HVAC-1	NEW ROOF TOP UNIT	M	575	32.9A	3	60																														
EF-1	ROOF EXHAUST FAN	M	120	1/4 HP	1	-																														
EF-2	RANGEHOOD EXHAUST FAN	M	120	FHP	1	-																														
Notes:																																				

EXTERIOR LED LIGHT FIXTURE SCHEDULE					
Item	Manufacturer/Catalog Number	Voltage	Lamp	Mounting	Description
P	COOPER CAT. #0LEON-SAS-730-U-SMQ-XX-BPC DYNA POLE CAT. SR55-17	MOLT	166W 22654 LUMENS LED ARRAY 3000K BUG RATING: B5-U0-G3	POLE	POLE MOUNTED DECORATIVE FIXTURE C/W CAST ALUMINUM HOUSING, STANDARD TYPE, 24" SQUARE, 17" (4.5m) STRAIGHT 4" SQUARE POLE C/W BASE COVER, ENTIRE ASSEMBLY SHALL HAVE CUSTOM FINISH TO BE CHOSEN BY ARCHITECT
W	COOPER CAT. #JST-SA1-E-730-U-T4FT-XX-BPC	MOLT	45.2W 5712 LUMENS LED ARRAY 3000K BUG RATING: B1-U0-G2	WALL	COMPLETE CUT OFF LED WALLPACK FIXTURE C/W TYPE T4FT DISTRIBUTION, FULL CUT-OFF DARK SKY COMPLIANT, 800mA DRIVER, BUTTON TYPE PHOTO CONTROL, AND FINISH TO SUIT ARCHITECT. MOUNT FIXTURE AT 12" AND ABOVE FINISHED GRADE AS NOTED. REFER TO ARCHITECTURAL ELEVATIONS.
W1	COOPER CAT. #JST-SA1-E-730-U-T4FT-X-BPC	MOLT	58.2W 7149 LUMENS LED ARRAY 3000K BUG RATING: B1-U0-G2	WALL	COMPLETE CUT OFF LED WALLPACK FIXTURE C/W TYPE T4FT DISTRIBUTION, FULL CUT-OFF DARK SKY COMPLIANT, 1000mA DRIVER, AND FINISH TO SUIT ARCHITECT. MOUNT FIXTURE AT 12" ABOVE FINISHED GRADE AS NOTED. REFER TO ARCHITECTURAL ELEVATIONS.
V	LITHONIA CAT. #LDN6-30/25-L06-AR-LSS-MVOLT	120V	28.3W 2504 LUMENS LED ARRAY 3000K	RECESSED	6" (150mm) ROUND LED CANOPY DOWNLIGHT FIXTURE C/W FINISH TO SUIT ARCHITECT NOTE: FIXTURE MUST BE WET LOCATION LISTED.
NOTES:					
① IF THERE ARE ANY DISCREPANCIES BETWEEN THE FIXTURE PART NUMBER AND DESCRIPTION, IT IS THE RESPONSIBILITY OF THIS CONTRACTOR TO BRING THIS TO THE ELECTRICAL CONSULTANTS ATTENTION PRIOR TO SHOP DRAWING REVIEW.					
② REFER TO SPECIFICATION FOR ALTERNATE EQUALS.					
③ WHERE NOTED ABOVE THAT FIXTURES ARE TO HAVE FINISH TO SUIT ARCHITECT THE FINISH WILL BE SELECTED FROM MANUFACTURER'S OPTIONAL COLOUR CHART (I.e. RAL COLOURS OR EQUAL). PROVIDE THIS COLOUR CHART WITH SHOP DRAWING SUBMITTAL.					
④ LED LUMEN VALUES QUOTED FOR FIXTURES ARE TO BE CONSIDERED MINIMUM, AND AS ABSOLUTE OR DELIVERED LUMENS. LUMEN VALUES SHOULD NOT EXCEED MORE THAN 10% OF SPECIFIED OUTPUT.					

INTERIOR LED LIGHT FIXTURE SCHEDULE									
Item	Manufacturer/Catalog Number	Voltage	Lamp	Mounting	CRI	Listings	Description		
A	COOPER CAT. #ASQ-LD-LF-LM-02B3-021-U-AYC-CHN/SET-U LITHONIA CAT. #SSS L4B AL03 MOLT 40K B00R HC36 M12	120V	LED 4000 LUMENS 4000K 32.2W	SUSPENDED	80	N/A	4" (1200mm) SUSPENDED LED STRIP LIGHT C/W 36" CHAIN HANGER, WIDE OPTICAL DISTRIBUTION, 10% 0-10V DIMMING DRIVER, AND SWITCHABLE LUMENS. <div>LIGHT FIXTURE SETTING IS TO BE SET AT "4000K" AND "MEDIUM" LUMEN</div>		
B	COOPER CAT. #40025-NLV LITHONIA CAT. #CPX 1X4 AL07 B00R 5W7 5WL MOLT	120V	LED 2450 LUMENS 4000K 16.4W	RECESSED	80	N/A	1"x4" (305mmx120mm) LED BACKLIT PLAIN PANEL FIXTURE C/W FIELD SELECTABLE LUMENS AND COLOUR TEMPERATURE, WHITE FROSTED LENS, 10% 0-10V DIMMING DRIVER, AND WHITE FINISH. <div>LIGHT FIXTURE SETTING IS TO BE SET AT "4000K" AND "LOW" LUMEN</div>		
B1	COOPER CAT. #40025-NLV C/W DF-14W-U LITHONIA CAT. #CPX 1X4 AL07 B00R 5W7 5WL MOLT	120V	LED 3348 LUMENS 4000K 24.1W	RECESSED	80	N/A	SIMILAR TO TYPE "B" FIXTURE EXCEPT WITH DRY WALL KIT TYPE. <div>LIGHT FIXTURE SETTING IS TO BE SET AT "4000K" AND "MEDIUM" LUMEN</div>		
C	COOPER CAT. #40025-NLV LITHONIA CAT. #CPX 2X4 AL08 B00R 5W7 5WL MOLT	120V	LED 4302 LUMENS 4000K 33.6W	RECESSED	80	N/A	2"x4" (610mmx120mm) LED BACKLIT PLAIN PANEL FIXTURE C/W FIELD SELECTABLE LUMENS AND COLOUR TEMPERATURE, WHITE FROSTED LENS, 10% 0-10V DIMMING DRIVER, AND WHITE FINISH. <div>LIGHT FIXTURE SETTING IS TO BE SET AT "4000K" AND "LOW" LUMEN</div>		
F	LITHONIA CAT. #LHM-AL01-SW11-L04-AR-LSS-MVOLT-U32	120V	LED 1000 LUMENS 4000K 13W	RECESSED	80	N/A	RECESSED 4" (100mm) DIAMETER LED DOWNLIGHT SELECTABLE LUMENS AND SWITCHABLE COLOUR TEMPERATURE FIXTURE C/W SELF-FLANGED TRIM, SEMI-SPECULAR FINISH, AND UNIVERSAL DIMMING		
G	LITHONIA CAT. #B6 1800MM SEF AFL GND 120V G210 40K B00R W0X	120V	LED 1851 LUMENS 4000K 105W	SUSPENDED	80	N/A	LED HIGHBAY FIXTURE C/W GENERAL DISTRIBUTION OPTICS, ACRYLIC, FROSTED LENS, WIRE GUARD, AND 0-10V DIMMING DRIVERS. NOTE FIXTURE TO BE FASTENED TO UNISTRUT CHANNELS SPANNING ACROSS THE TOP OF THE BOTTOM CHORD OF THE JOISTS. SUSPENDED EVEN WITH THE BOTTOM OF JOISTS. ENTIRE FIXTURE ASSEMBLY IS TO HAVE A WHITE FINISH.		
EMERG. LIGHTS	STANPRO CAT. #N1-06-12V3WLWH (SINGLE REMOTE) STANPRO CAT. #N2-06-12V3WLWH (DOUBLE REMOTE)	12V	LED	SURFACE	N/A	N/A	HEAD LED REMOTE MP16 FIXTURE C/W COMPACT DESIGN, THERMOPLASTIC CONSTRUCTION, WHITE COLOUR, FULL ADJUSTMENT, AND 360° ROTATION.		
COMBO UNIT	STANPRO CAT. #PKNALX EM-1 #PKNAL10361-2NLU-JAT	12V/120V	LED	SURFACE	N/A	N/A	LED EXTRUDED ALUMINUM PICTOGRAM FIXTURE C/W GREEN FACE AND WHITE LEGEND, UNIVERSAL MOUNTING TO SUIT WALL, END OR CEILING, MAXIMUM 2.5" (63mm) THICKNESS, 12V INTERNAL SEALED RECHARGEABLE BATTERY PROVIDING MINIMUM EMERGENCY WATTHAGE AS NOTED BY THE CATALOGUE NUMBER AND AUTO-TEST FEATURE. INTEGRAL 12V LED HEADS TO HAVE WHITE FINISH WITH WHITE COLOUR, FULL ADJUSTMENT, AND 360° ROTATION. WHERE NOTED UNIT SHALL BE C/W WIRINGDUOD, FACES AND CHECKING TO SUIT DIMMING.		
EMERG. BATT.	STANPRO CAT. EM-2 #SA12072-2NLU/JAT	12V/120V	LED	SURFACE	N/A	N/A	LONG LIFE, SEALED RE-CHARGEABLE BATTERY PROVIDING MINIMUM EMERGENCY WATTHAGE AS NOTED BY THE CATALOGUE NUMBER C/W MICRO SIZE 12V 4W (MINIMUM) LED HEADS AND AUTO-TEST FEATURE.		
EXIT LIGHTS	BEGHELLI CAT. #BRLUMSWMOLR STANPRO CAT. #PKNALWHLUDC AMULTE CAT. #PKNALWHLUDC	12V/120V	2.5 WATT (MAX)3C 2 WATT (MAX)3C	SURFACE	N/A	N/A	LED EXTRUDED ALUMINUM PICTOGRAM FIXTURE C/W GREEN FACE AND WHITE LEGEND, UNIVERSAL MOUNTING TO SUIT WALL, END OR CEILING AND MAXIMUM 63mm (2.5") THICKNESS.		
NOTES:									
① LED LUMEN VALUES QUOTED FOR FIXTURES ARE TO BE CONSIDERED MINIMUM, AND AS ABSOLUTE OR DELIVERED LUMENS. LUMEN VALUES SHOULD NOT EXCEED MORE THAN 10% OF SPECIFIED OUTPUT.									
② REFER TO SPECIFICATION FOR ALTERNATE EQUALS.									
③ EQUAL MANUFACTURERS/SUPPLIERS MUST CONFIRM THE PROPOSED FIXTURE BY EMAIL WITH CONSULTANTS OFFICE A MINIMUM OF 10 DAYS PRIOR TO TENDER CLOSE.									

Glenview Public School  
Gym Addition

143 Townsend Ave.  
Burlington, ON L7T 1Z1

Architects  
**sn/der**  
Snyder Architects Inc.  
100 Broadview Ave, Suite 301,  
Toronto, ON M4M 3H3  
1.416.966.5444, w. snyderarchitects.ca

**DEI**  
Consulting Engineers  
MECHANICAL, ELECTRICAL, PLUMBING, AND HVAC

The contractor shall verify all dimensions and report all errors and discrepancies to the Consultant before commencement of the work. The drawings show general arrangement and construction will permit. Obtain approval for relocation of service from Consultant before commencement of the work. The drawings do not indicate all effects fitting and accessories which may be required. Provide the same to meet the required conditions. Drawings and specifications, etc., prepared and issued by the consultant are the property of the consultant and must be returned at the completion of the project. These documents are not to be duplicated or copied without the consent of the Consultant. Do not scale this drawing.

© 2024 DEI Consulting Engineers Inc.

P-WALL MOUNTED OCCUPANCY SENSOR WIRING DIAGRAM (LINE VOLTAGE)

SCALE: N.T.S.



Q-CORRIDOR LIGHTING WIRING DIAGRAM

SCALE: N.T.S.

ALL CONSTRUCTION TO MEET ONTARIO BUILDING CODE REQUIREMENTS  
RECEIVED  
MAY 03 2024  
CITY OF BURLINGTON  
BUILDING DEPARTMENT

Project North  
No. / Revisions  
Date

3	ISSUED FOR PERMIT	2024.04.16
2	ISSUED FOR SPA SUBMISSION	2024.02.27
1	ISSUED FOR SPA REVIEW SET	2024.02.06
No	Revision	Date

Drawing Title:  
**DETAILS AND SCHEDULES**

Scale: AS NOTED Date: JAN 2024

Drawn by: SB Checked by: RV

Job No. Drawing No.

2314 E102













2050 Guelph Line,  
Burlington, ON.  
L7P 5A8

Glenview Public School  
Gym Addition

143 Townsend Ave.,  
Burlington, ON. L7T 1Z1

## Architects

sn/der

**Snyder Architects Inc**

100 Broadview Ave, Suite 301,  
Toronto, ON M4M 3H3  
416.966.5444, w. snyderarchitects.



The contractor shall verify all dimensions and report all errors and discrepancies to the Consultant before commencement of the work. The drawings show general arrangement of services. Following the construction of building construction will permit. Obtain approval for relocation of service from Consultant before commencement of the work.

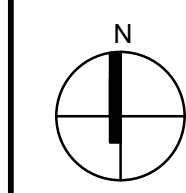
The drawings do not indicate all offsets fitting and accessories which may be required. Provide the drawings to meet the required conditions. Drawings and specifications, etc., prepared and issued by the consultant are the property of the consultant and must be returned at the completion of the project. These documents are not to be duplicated or copied without the consent of the Consultant.

Do not scale this drawing.

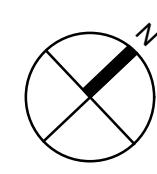
© 2024 DEI Consulting Engineers Inc.

**ALL CONSTRUCTION TO MEET ONTARIO BUILDING CODE REQUIREMENTS**

**RECEIVED**  
MAY 03 2024  
CITY OF BURLINGTON  
BUILDING DEPARTMENT



Project North



True North

[illegible]

3	ISSUED FOR PERMIT	2024.04.16
2	ISSUED FOR SPA SUBMISSION	2024.02.27
1	ISSUED FOR SPA REVIEW SET	2024.02.06
No	Revision	Date



Drawing Title:

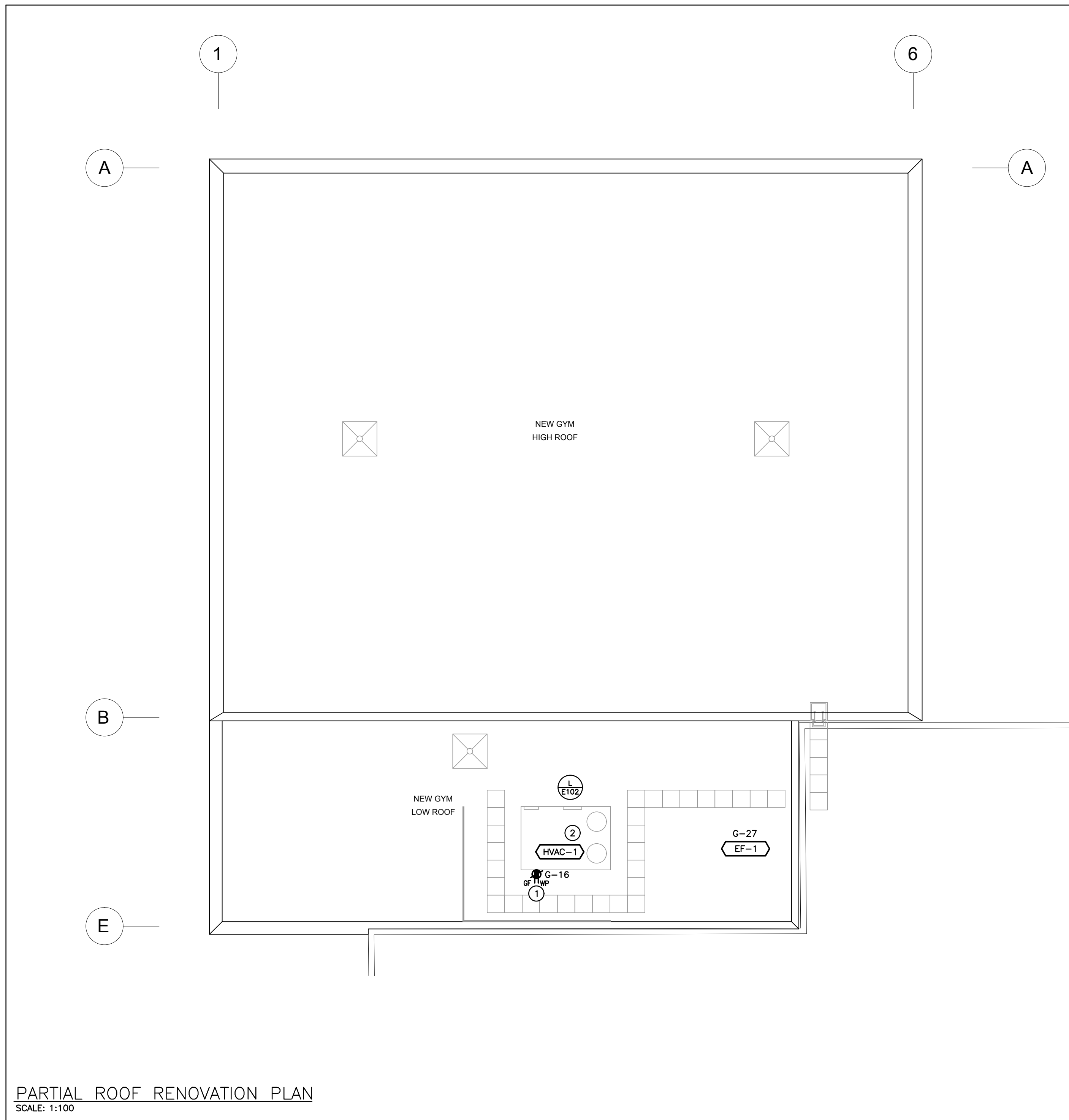
## PARTIAL ROOF RENOVATION PLAN

Scale: AS NOTED	Date: JAN 2024
-----------------	----------------

Drawn by: SB	Checked by: RV
--------------	----------------

Job No.	Drawing No.
---------	-------------

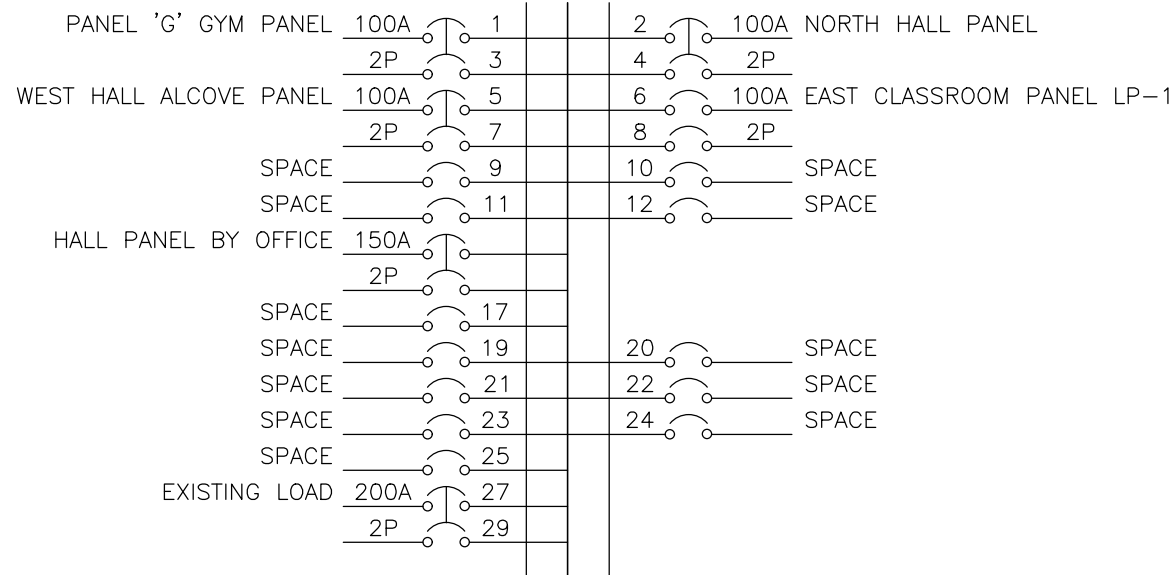
2314 E203





### EXISTING PANEL 'DP-X'

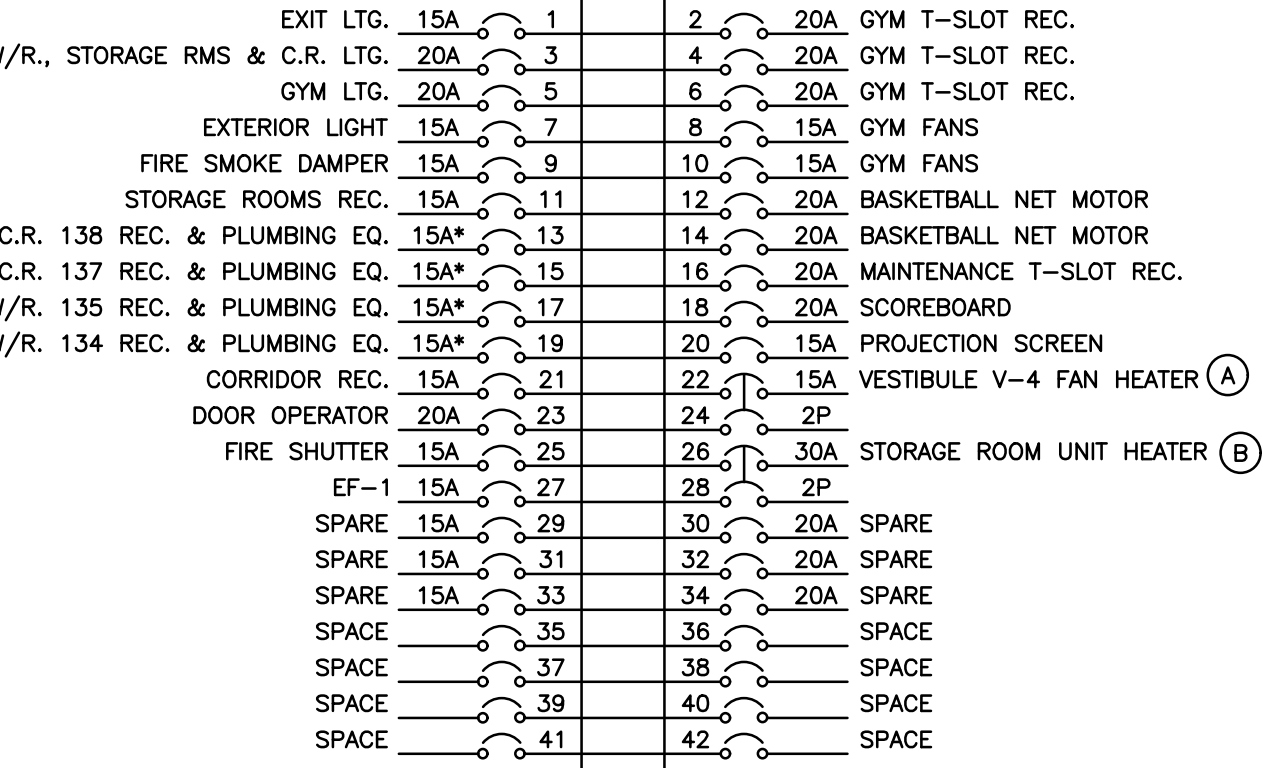
VOLTAGE: 120/208 VOLTS  
PHASE: 3P, 4W  
MANS: 100A  
NEUTRAL BUS: FULL  
MOUNTING: SURFACE  
NOTES: POW-R-LINE 3A



NOTES: EXISTING BREAKER TO REMAIN.

### PANEL 'G'

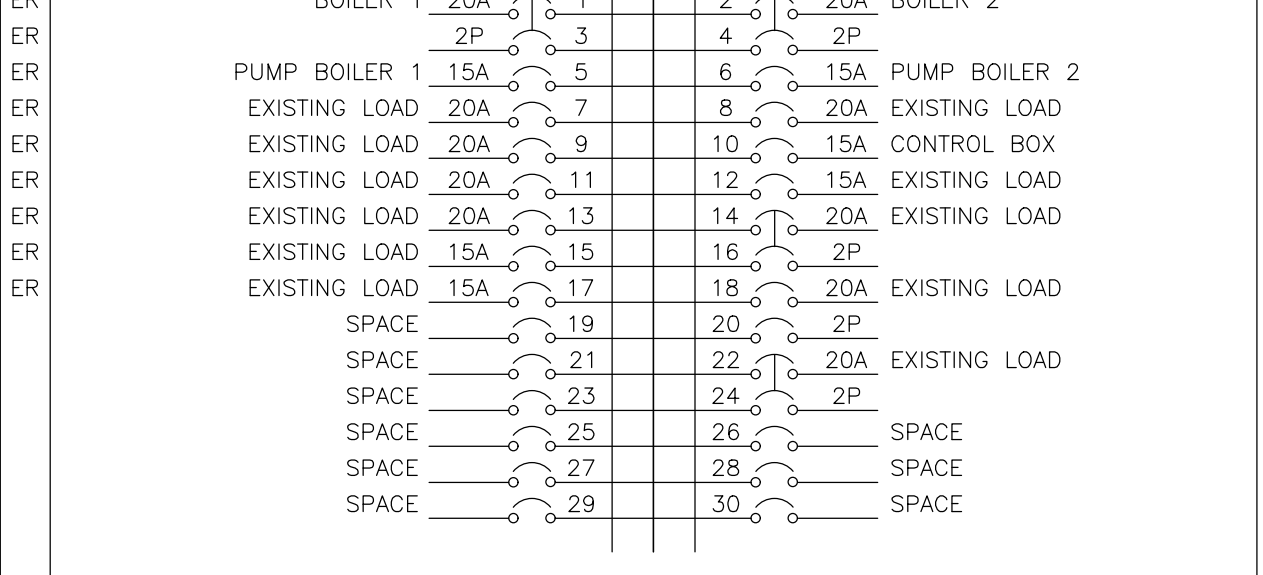
VOLTAGE: 120/208 VOLTS  
PHASE: 3P, 4W  
MANS: 100A  
NEUTRAL BUS: FULL  
MOUNTING: SURFACE  
NOTES: SQUARE D



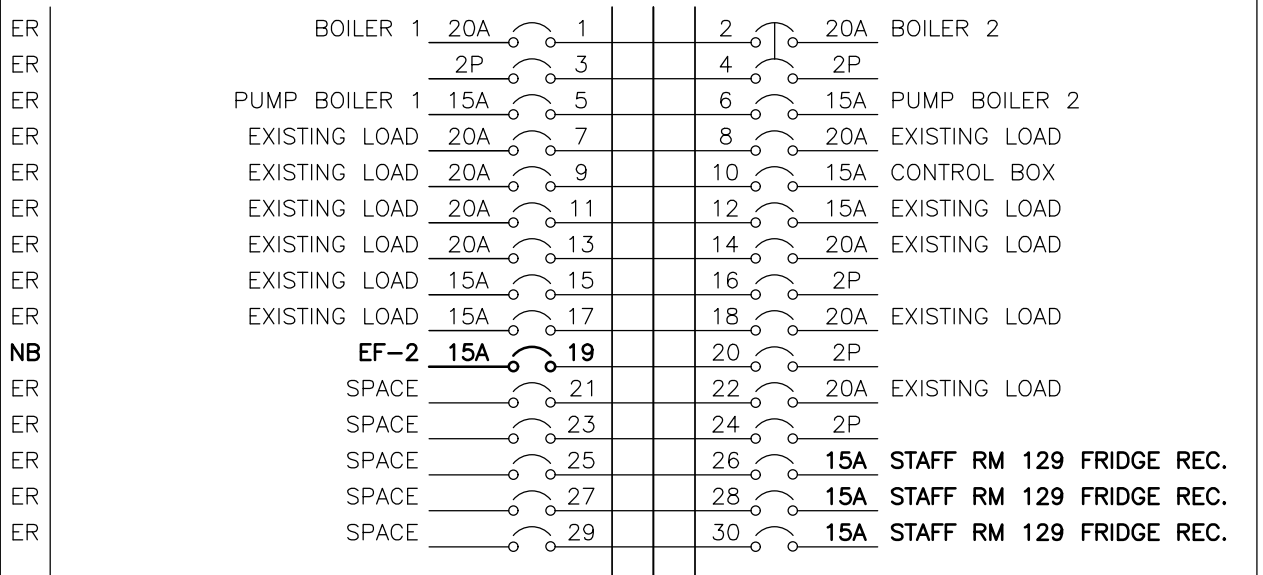
NOTE: THE INDICATED PANEL ASSEMBLY MUST HAVE AN INTERRUPTING CAPACITY OF 10000 A, PROVIDE BY EITHER FULLY RATED BREAKERS OR INTEGRATED EQUIPMENT RATING WITH THE UPSTREAM BREAKER.

### EXISTING PANEL 'LP-B' SCHEDULE

VOLTAGE: 120/208 VOLTS  
PHASE: 3P, 4W  
MANS: 100A  
NEUTRAL BUS: FULL  
MOUNTING: SURFACE  
NOTES: SQUARE D NO430L1C



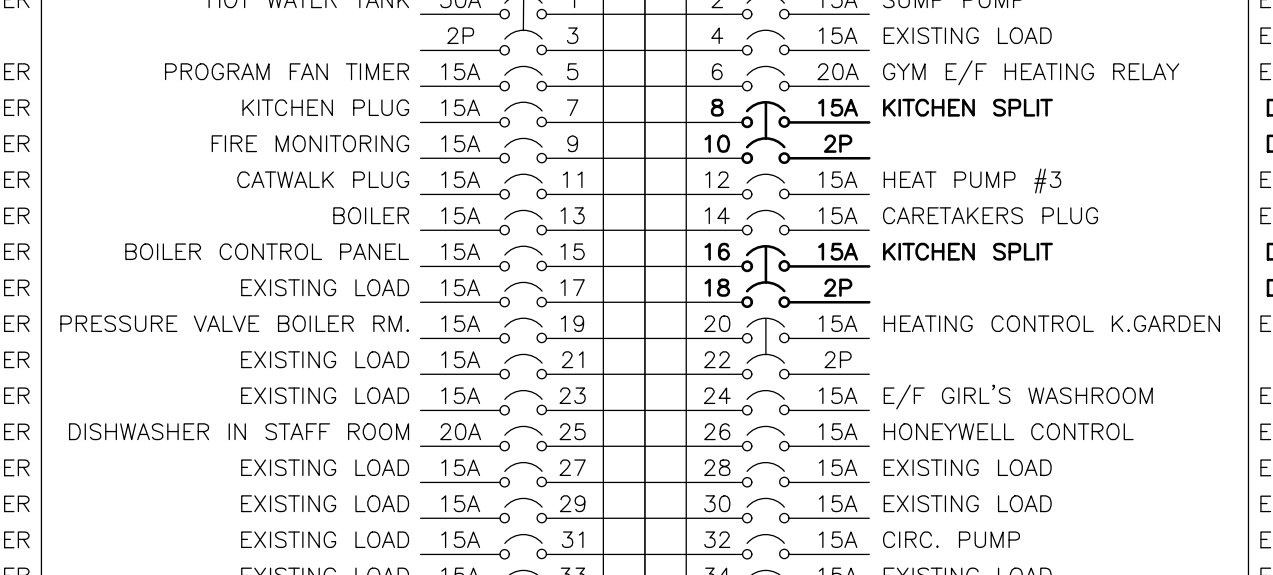
### PROPOSED PANEL 'LP-B' SCHEDULE



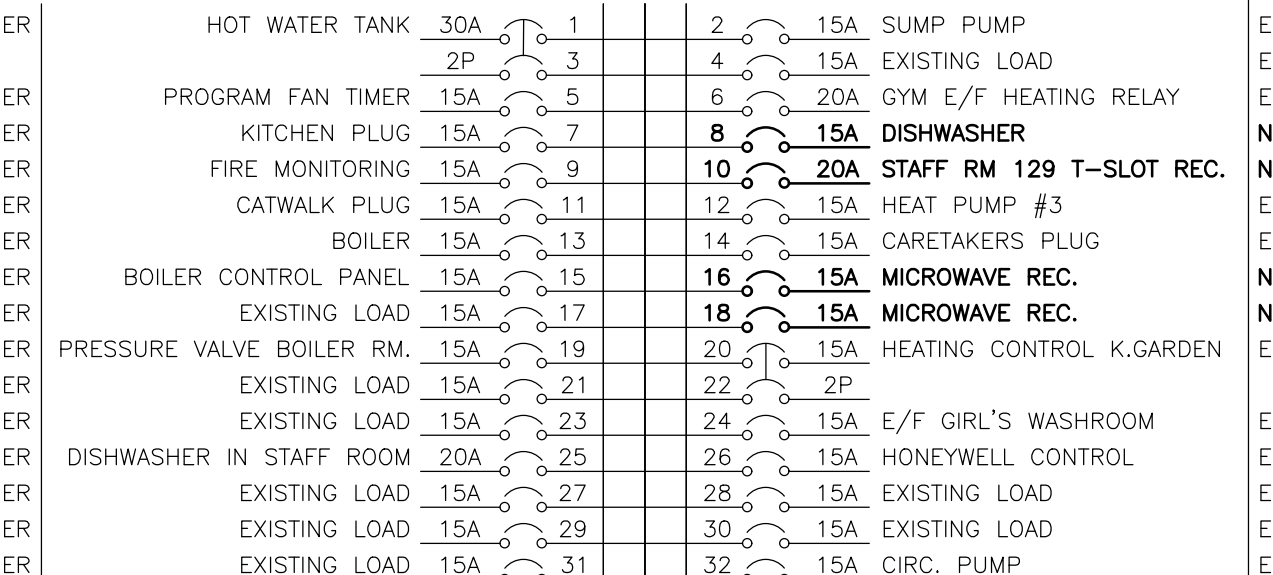
AT THE COMPLETION OF THE PROJECT, PROVIDE A NEW TYPE WRITTEN PANEL DIRECTORY AND INCLUDE A COPY IN THE MAINTENANCE MANUALS

### EXISTING PANEL 'LP-A' SCHEDULE

VOLTAGE: 120/208 VOLTS  
PHASE: 3P, 4W  
MANS: 100A  
NEUTRAL BUS: FULL  
MOUNTING: SURFACE  
NOTES: EATON TYPE PRL1A



### PROPOSED PANEL 'LP-A' SCHEDULE



AT THE COMPLETION OF THE PROJECT, PROVIDE A NEW TYPE WRITTEN PANEL DIRECTORY AND INCLUDE A COPY IN THE MAINTENANCE MANUALS

### DESIGNATION

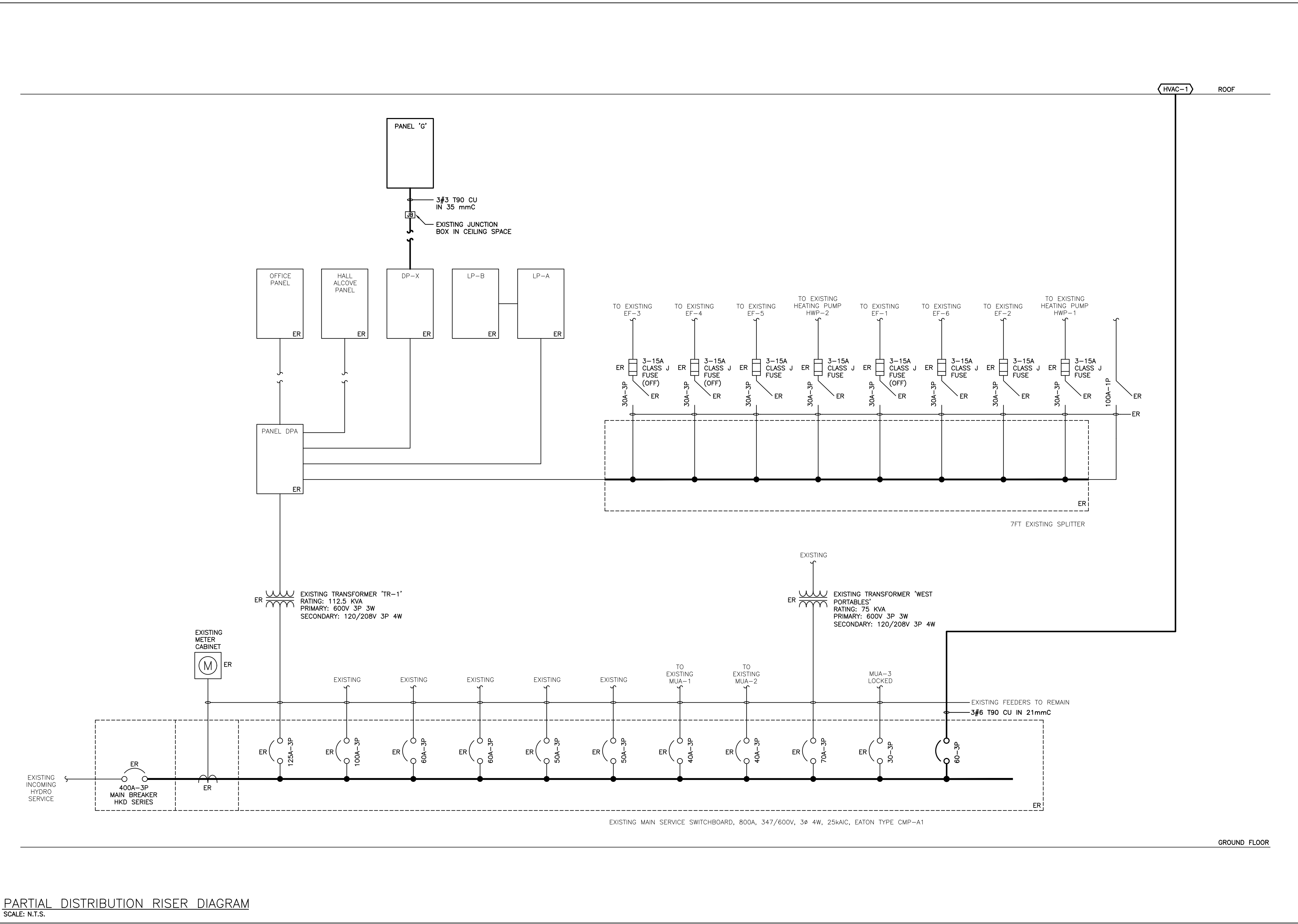
'ER' INDICATES EXISTING SERVICE AND BREAKER THAT SHOULD REMAIN UNTOUCHED  
'SP' INDICATES EXISTING BREAKER THAT MAY BECOME SPARE DUE TO DEMOLITION. (CONFIRM ON SITE)  
'RW' INDICATES EXISTING BREAKER THAT SHOULD BE REWIRED TO SERVICE DEVICES INDICATED ON PLAN  
'SB' INDICATES SPARE BREAKER TO BE USED FOR NEW SERVICE INDICATED.  
'NB' INDICATES NEW BREAKER AND WIRING TO SERVICE INDICATED. PROVIDE MOUNTING HARDWARE AS REQUIRED.  
'D' INDICATES EXISTING BREAKER TO BE REMOVED COMPLETE. PROVIDE FILLER PLATES AS REQUIRED.  
NOTES: THIS CONTRACTOR IS TO INVESTIGATE BREAKERS AND REVERSE PANEL SCHEDULES TO SUIT RENOVATION, NOTING ANY BREAKERS THAT BECOME SPARE DUE TO DEMOLITION. THIS CONTRACTOR IS ALSO TO NOTIFY THE CONSULTANT OF ANY BREAKERS THAT ARE INDICATED TO BE DEMOLISHED OR REUSED, BUT WHICH ARE IN USE BY OTHER DEVICES OR SERVICES.

NOTES: EXISTING BREAKER TO REMAIN.

### DESIGNATION

'ER' INDICATES EXISTING SERVICE AND BREAKER THAT SHOULD REMAIN UNTOUCHED  
'SP' INDICATES EXISTING BREAKER THAT MAY BECOME SPARE DUE TO DEMOLITION. (CONFIRM ON SITE)  
'RW' INDICATES EXISTING BREAKER THAT SHOULD BE REWIRED TO SERVICE DEVICES INDICATED ON PLAN  
'SB' INDICATES SPARE BREAKER TO BE USED FOR NEW SERVICE INDICATED.  
'NB' INDICATES NEW BREAKER AND WIRING TO SERVICE INDICATED. PROVIDE MOUNTING HARDWARE AS REQUIRED.  
'D' INDICATES EXISTING BREAKER TO BE REMOVED COMPLETE. PROVIDE FILLER PLATES AS REQUIRED.  
NOTES: THIS CONTRACTOR IS TO INVESTIGATE BREAKERS AND REVERSE PANEL SCHEDULES TO SUIT RENOVATION, NOTING ANY BREAKERS THAT BECOME SPARE DUE TO DEMOLITION. THIS CONTRACTOR IS ALSO TO NOTIFY THE CONSULTANT OF ANY BREAKERS THAT ARE INDICATED TO BE DEMOLISHED OR REUSED, BUT WHICH ARE IN USE BY OTHER DEVICES OR SERVICES.

NOTES: EXISTING BREAKER TO REMAIN.



PARTIAL DISTRIBUTION RISER DIAGRAM  
SCALE: N.T.S.

### Glenview Public School Gym Addition

143 Townsend Ave.  
Burlington, ON L7T 1Z1

Architects  
**sn/der**  
Snyder Architects Inc.  
100 Broadview Ave, Suite 301,  
Toronto, ON M4M 3H3  
T. 416.966.5444, w. snyderarchitects.ca

**DEI**  
Consulting Engineers  
MECHANICAL / ELECTRICAL / PLUMBING

The contractor shall verify all dimensions and report all errors and discrepancies to the Consultant before commencement of the work. The drawings show general arrangement of services. Follow us closely on actual building construction will permit. Obtain approval for relocation of service from Consultant before commencement of the work. The drawings do not indicate all offsets fitting and accessories which may be required. Provide the same to meet the required conditions. Drawings and specifications, etc., prepared and issued by the consultant are the property of the consultant and must be returned if the completion of the project. These documents are not to be duplicated or copied without the consent of the Consultant. Do not scale this drawing. © 2024 DEI Consulting Engineers Inc.

ALL CONSTRUCTION TO MEET ONTARIO BUILDING CODE REQUIREMENTS  
RECEIVED  
MAY 03 2024  
CITY OF BURLINGTON  
BUILDING DEPARTMENT

Project North  
True North

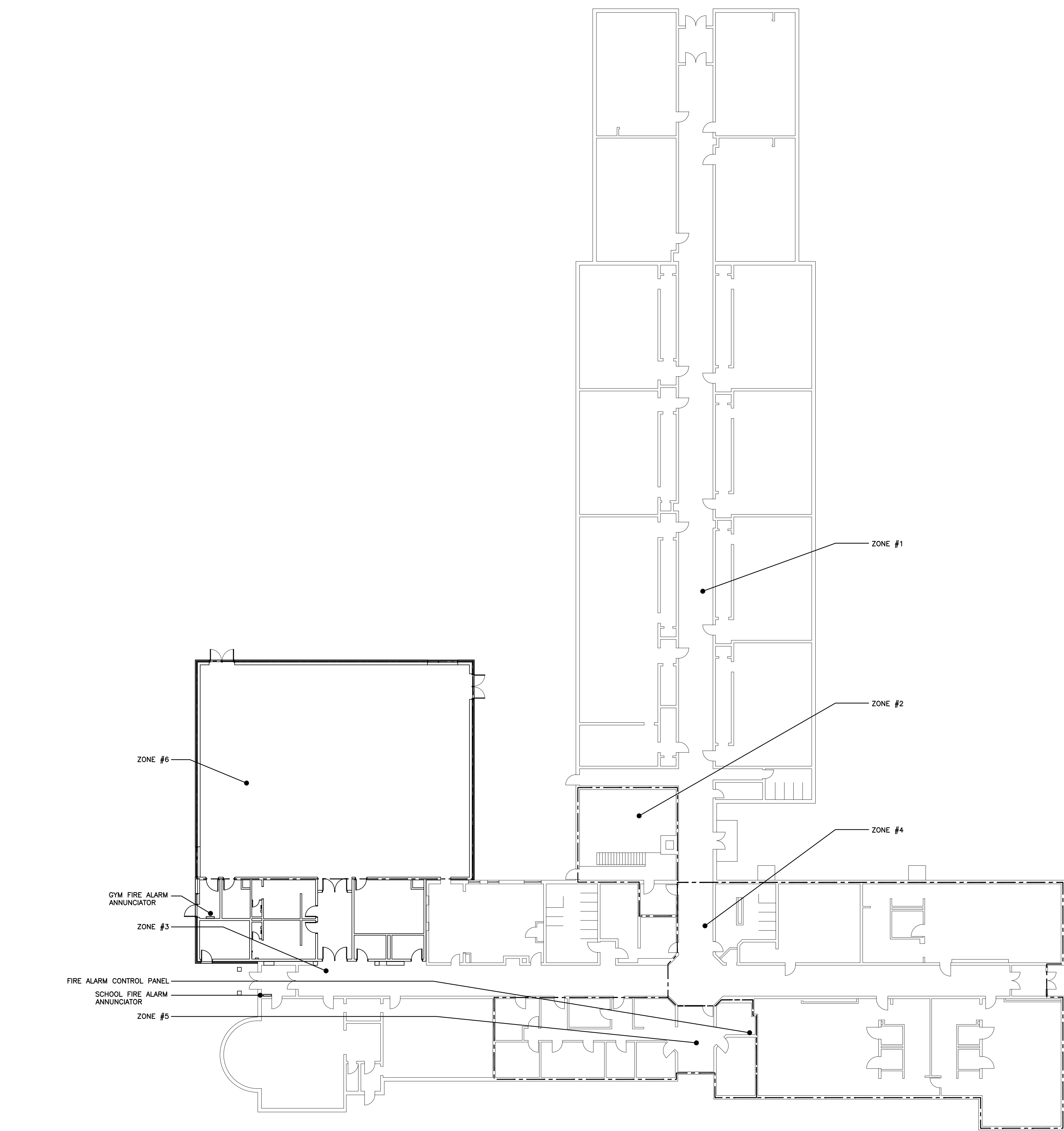
No.	Revisions	Date
3	ISSUED FOR PERMIT	2024.04.16
2	ISSUED FOR SPA SUBMISSION	2024.02.27
1	ISSUED FOR SPA REVIEW SET	2024.02.06
No.	Revision	Date

Professional Engineer  
J. JACKSON  
10001-1274  
16/1/24

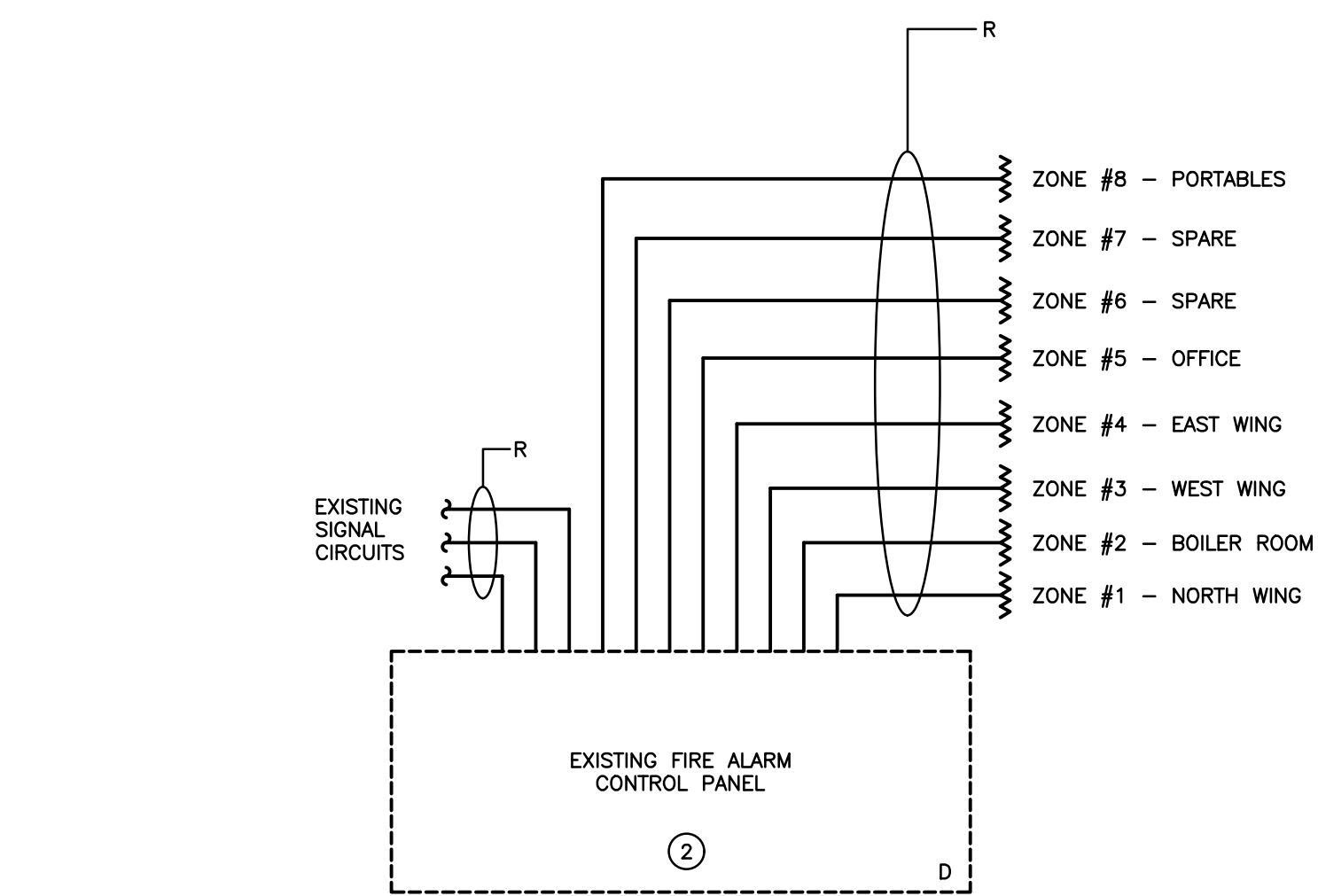
### DISTRIBUTION RISER DIAGRAM AND PANEL SCHEDULE

Scale: AS NOTED Date: JAN 2024  
Drawn by: SB Checked by: RV  
Job No. Drawing No.  
**2314** **E301**





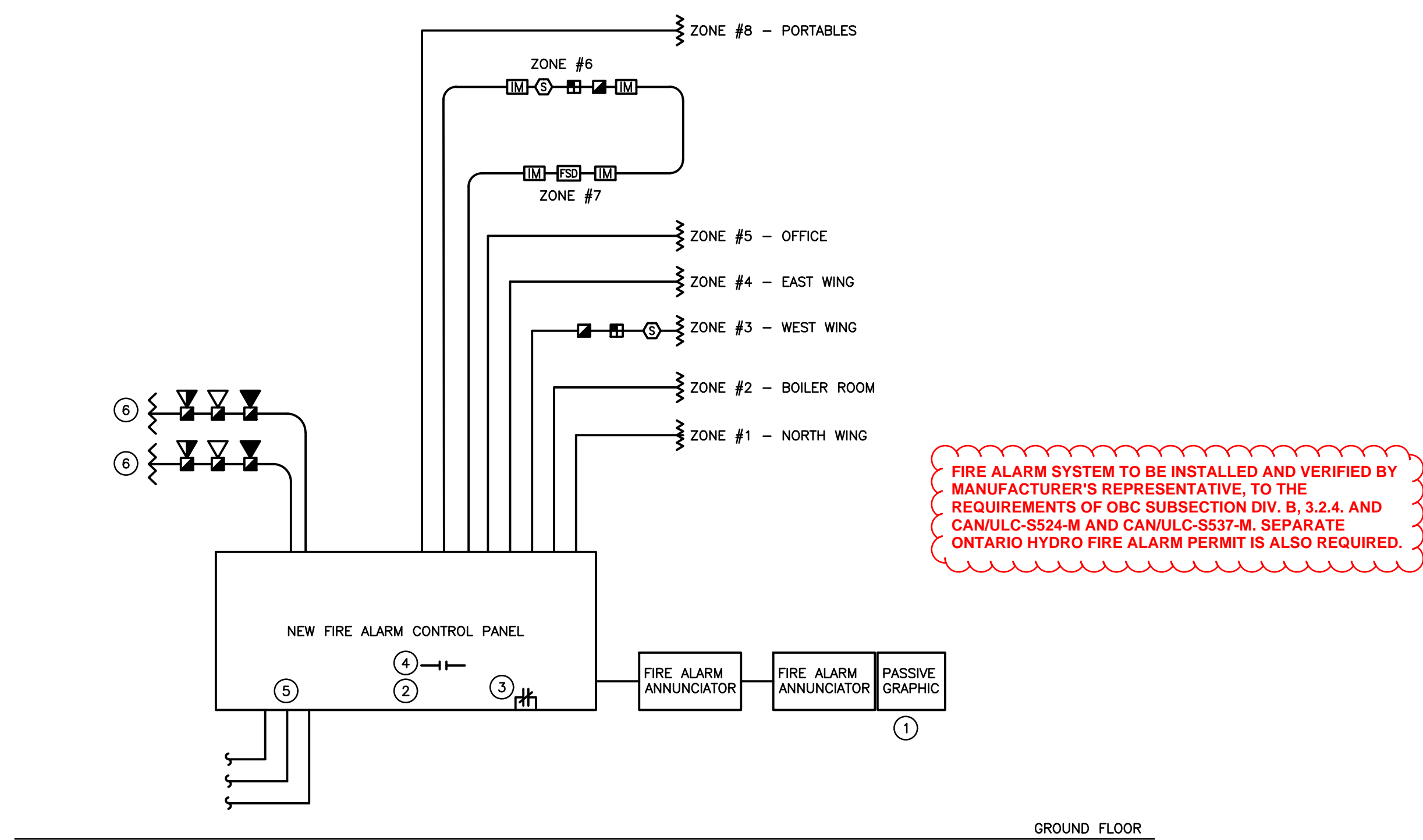
PASSIVE GRAPHIC – GROUND FLOOR PLAN  
SCALE: NTS



GROUND FLOOR

PARTIAL FIRE ALARM RISER DIAGRAM – DEMOLITION

SCALE: NTS



PARTIAL FIRE ALARM RISER DIAGRAM – RENOVATION

SCALE: NTS

FIRE ALARM ANNUNCIATOR SCHEDULE			
Zone	Description	Alarm	Supervisory
1	NORTH WING	•	
2	BOILER ROOM	•	
3	WEST WING	•	
4	EAST WING	•	
5	OFFICE	•	
6	GYMNASIUM	•	
7	FIRE SHAKE DAMPER	•	
8	PORTABLES	•	
9	SPARE		
10	SPARE		
11	SPARE		
12	SPARE		

**Halton District School Board**  
2050 Guelph Line,  
Burlington, ON.  
L7P 5A8

## Glenview Public School Gym Addition

143 Townsend Ave.,  
Burlington, ON. L7T 1Z1

Architects

sn/der

**Snyder Architects Inc.**

100 Broadview Ave, Suite 301,  
Toronto, ON M4M 3H3

t. 416.966.5444, w. snyderarchitects.



The contractor shall verify all dimensions and report all errors and discrepancies to the Consultant before commencement of the work.

The drawings show general arrangement of services to follow as indicated. The contractor shall obtain approval for relocation of service from Consultant before commencement of the work.

The drawings do not indicate all offsets fitting and accessories which may be required. Provide the same to meet the above stated conditions.

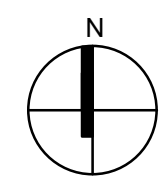
Drawings and specifications, etc., prepared and issued by the consultant are the property of the consultant and must be returned at the completion of the project. These documents are not to be copied without the written consent of the Consultant.

Do not scale this drawing.

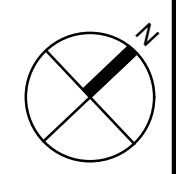
© 2024 DEI Consulting Engineers Inc.

**ALL CONSTRUCTION TO MEET ONTARIO BUILDING CODE REQUIREMENTS**

RECEIVED  
MAY 03 2024

CITY OF BURLINGTON  
BUILDING DEPARTMENT

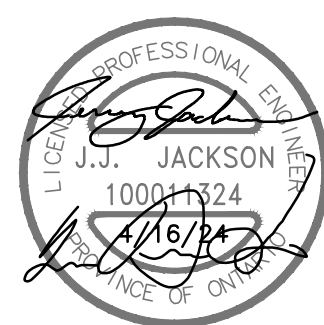
## Project North



True North

[illegible]

3	ISSUED FOR PERMIT	2024.04.16
2	ISSUED FOR SPA SUBMISSION	2024.02.27
1	ISSUED FOR SPA REVIEW SET	2024.02.06
No	Revision	Date



Drawing Title:

# PARTIAL FIRE ALARM RISER DIAGRAM AND PASSIVE GRAPHIC

Scale: AS NOTED	Date: JAN 2024
-----------------	----------------

Drawn by: SB	Checked by: RV
--------------	----------------

Job No.	Drawing No.
---------	-------------

2314 | E302

CCB - Building Department  
Page 1