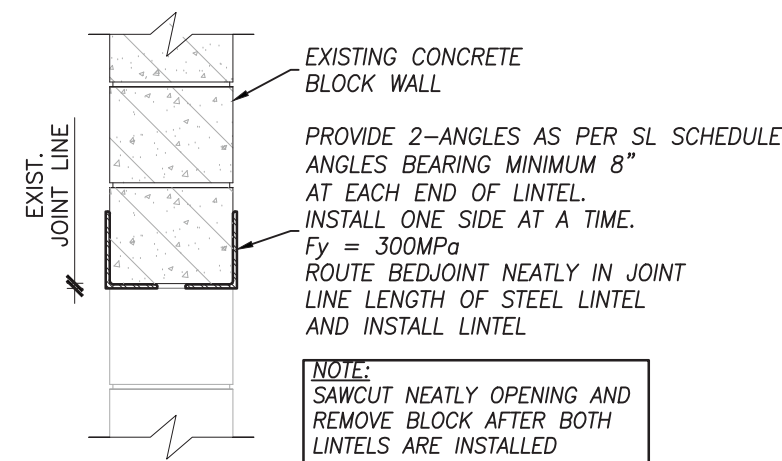


TYPICAL ROOF TOP HVAC UNIT FRAMING

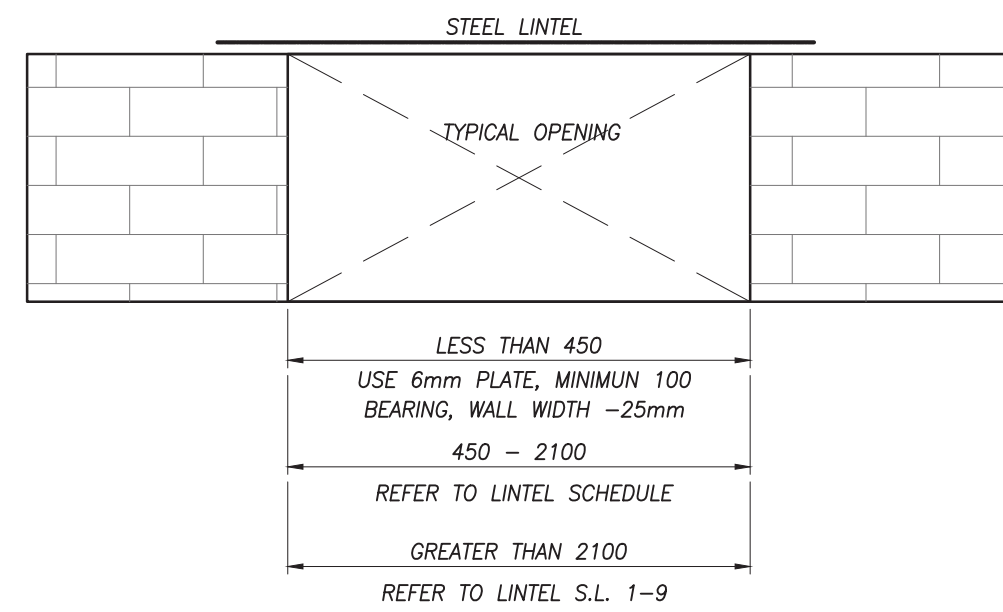
NOT TO SCALE
(FOR UNIT & OPENING SUPPORT)



TOE IN STEEL LINTEL SECTION

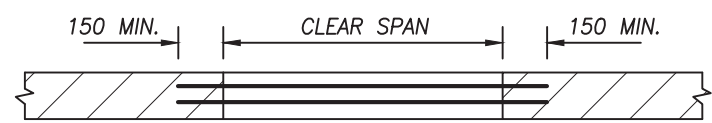
SCALE:

NTS



TYPICAL STEEL LINTEL DETAIL

NOT TO SCALE



CLEAR SPAN	140 WALL	190 WALL
UP to 1200	2Ls 75x85x8	2Ls 90x90x8
1200 to 1800	2Ls 90x90x8	2Ls 125x90x8
1800 to 2100	2Ls 90x90x10	2Ls 150x90x8

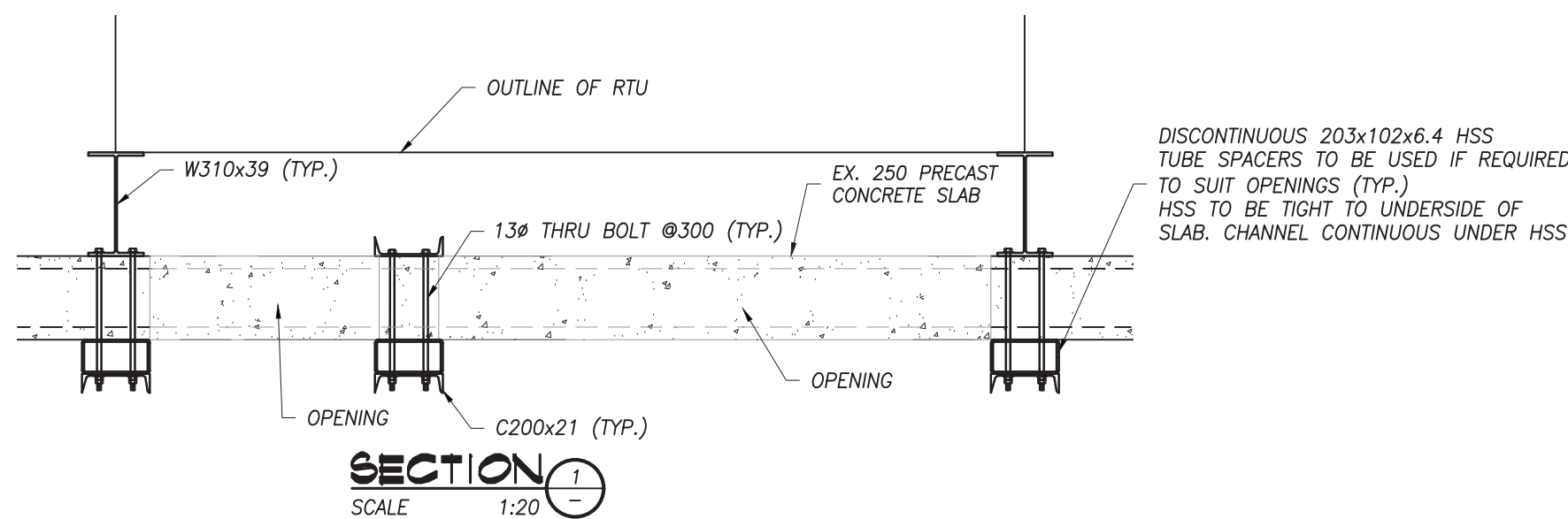
CLEAR SPAN	240 WALL	290 WALL
UP to 1200	2Ls 100x100x8	3Ls 90x90x8
1200 to 1800	2Ls 150x100x8	3Ls 125x90x8
1800 to 2100	2Ls 150x100x8	3Ls 150x90x8

FOR LINTELS IN 90 VENEER, USE 1 ANGLE OF THAT NOTED FOR 190 WALL ON SIMILAR SPAN.

DOUBLE ANGLES TO BE STITCH WELDED BACK TO BACK. TOE IN ANGLES OPTION ACCEPTABLE AT MECHANICAL OPENINGS

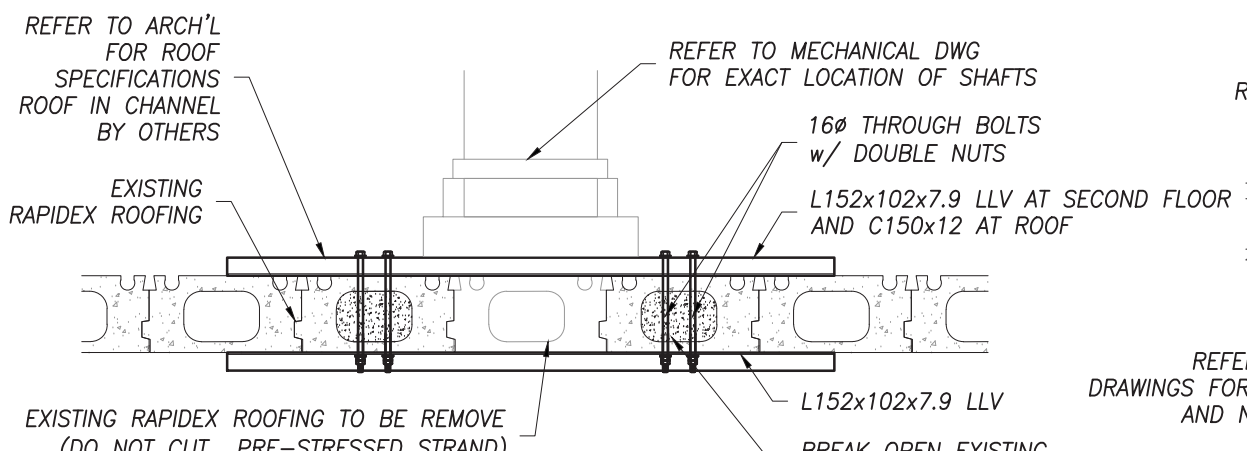
TYPICAL STEEL LINTEL DETAIL

NOT TO SCALE



SECTION 1

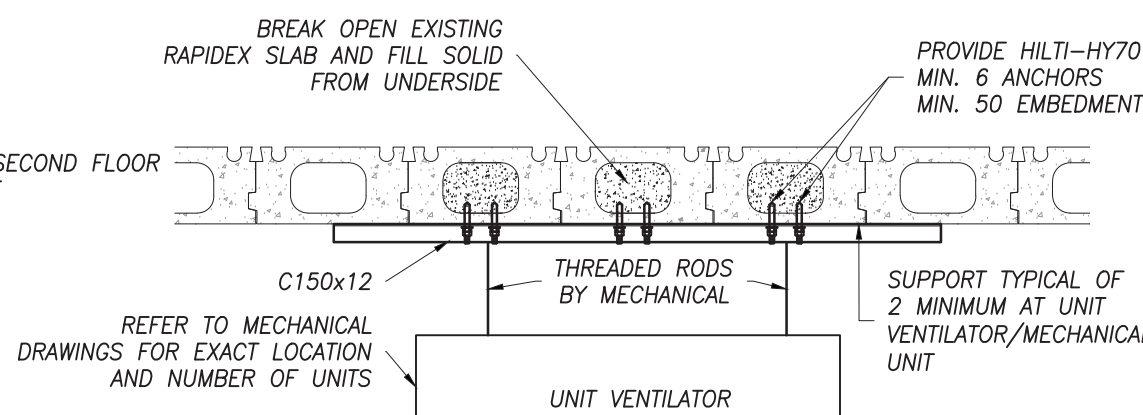
SCALE 1:20



SECTION AT RAPIDEX

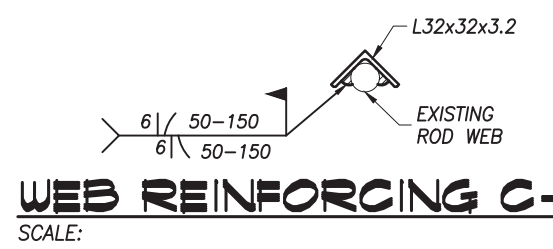
SCALE 1:20

- BREAK OPEN EXISTING RAPIDEX CONCRETE ROOF SLAB.
- FILL VOID SOLID w/ NON-SHRINK CONCRETE.
- BRACE OPENING w/ L152x102x7.9 TOP LLV AND L152x102x7.9 LLV AT BOTTOM FOR SECOND FLOOR OPENING. C150x12 AT TOP AND L152x102x709 LLV AT BOTTOM FOR ROOF OPENINGS.
- THROUGH BOLT C-CHANNEL/ANGLE w/ 16# THROUGH BOLT
- CUT AND REMOVE EXISTING RAPIDEX TO SUIT NEW DUCT OPENING



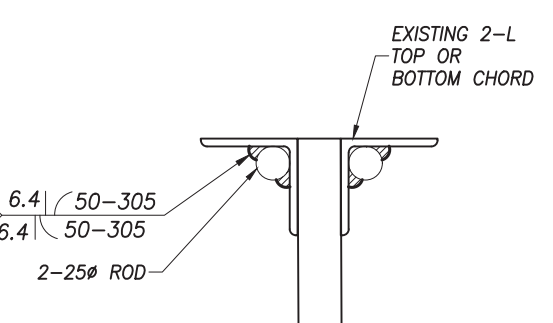
UNIT VENTILATOR/MECHANICAL AT RAPIDEX SUPPORT

SCALE 1:20



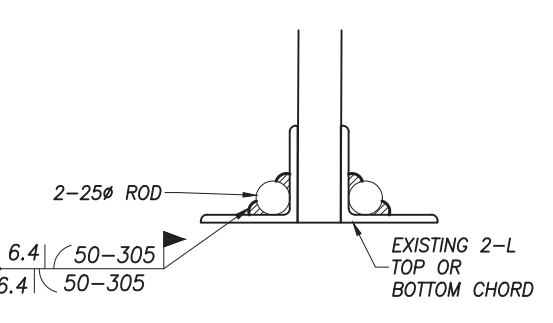
WEB REINFORCING C-C

SCALE 1:5



CHORD REINFORCING A-A

SCALE 1:5



CHORD REINFORCING B-B

SCALE 1:5

Halton District School Board

2050 Guelph Line
Burlington, Ontario

NELSON HIGH SCHOOL RENOVATIONS

4181 NEW STREET
Burlington, Ontario

Architect

sn/der
Snyder Architects Inc.
100 Broadview Ave., Suite 301, Toronto, ON M4M 3H3
Tel: 416-966-5444
www.snyderarchitects.ca

Consultants

Mechanical and Electrical Consultants
RDZ Engineering Ltd
30 Pennsylvania Avenue, Unit 17A
Vaughan, Ontario, L4K 4A5
Tel: --

Structural Consultants
Kalos Engineering Inc.
300 York Boulevard,
Hamilton, Ontario, L8R 3K6
Tel: 905-333-9119



Key Plan N.T.S.



Project North True North

No.	Revisions	Date
1	ISSUED FOR BIDS	05/13/2024
2	ISSUED FOR CONSTRUCTION	06/25/2024

No.	Issue	Date
-----	-------	------

General Contractor shall check and verify all dimensions and report all errors and omissions to the Architect. Do not scale the drawings. Drawings shall not be used for construction purposes until issued by the Architect for construction.

Drawing Title:
FRAMING PLANS AND TYPICAL SECTIONS AND DETAILS

Scale: 1:100 Date: 04/29/2024

Drawn by: QN Checked by:

Job No. Drawing No.

24023

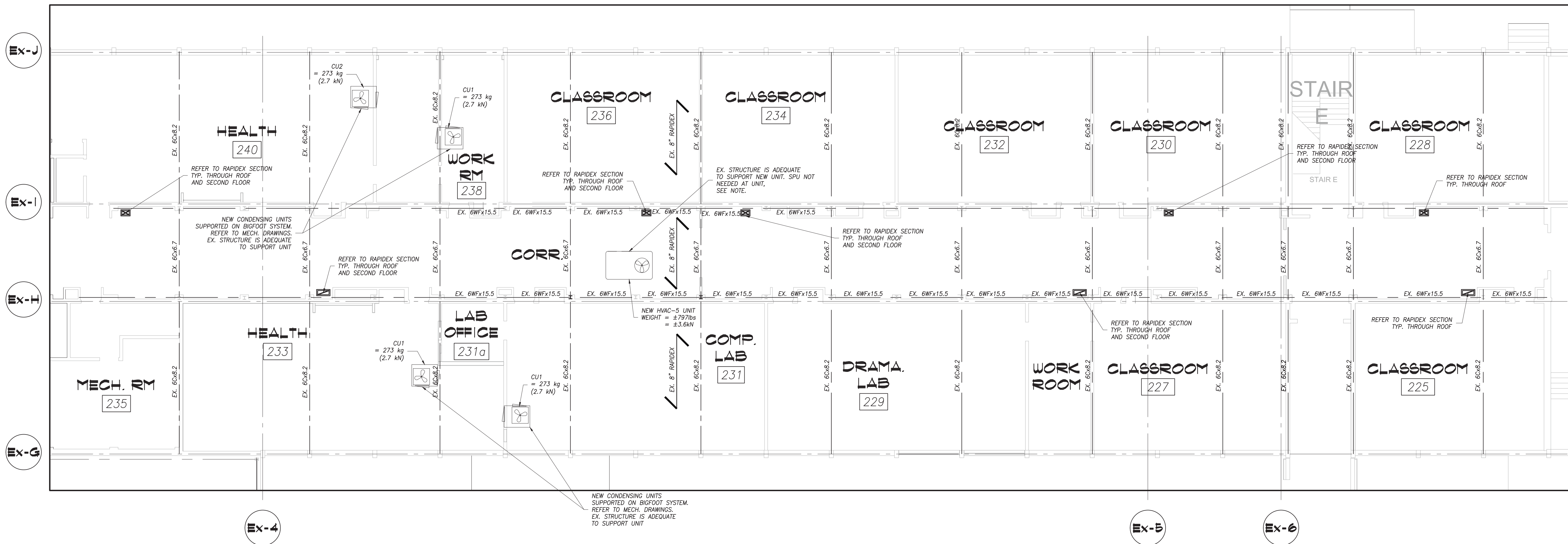
S2



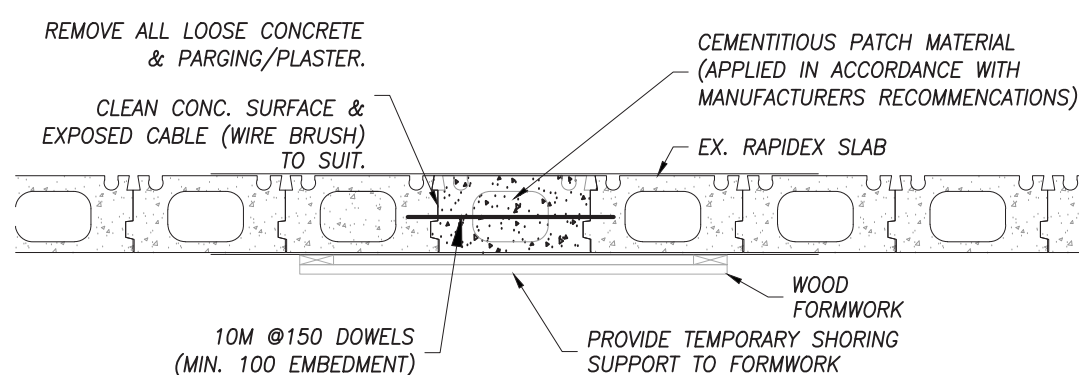
No.	Revisions	Date
	ISSUED FOR BIDS	05/13/2024

[illegible]

General Contractor shall check and verify all dimensions and report all errors and omissions to the Architect. Do not scale the drawings. Drawings shall not be used for construction purposes until issued by the Architect for construction.



PARTIAL 1963 CLASSROOM WING FRAMING PLAN (4)
SCALE 1:100



RAPIDEX/PRECAST SLAB INFILL DETAIL
SCALE 1:20

1. SAWCUT AROUND PERIMETER APPROXIMATE 25mm DEEP
2. PROVIDE CLEARANCE OF 19mm BEHIND REINFORCEMENT
3. CLEAN DELAMINATED AREA OF ALL LOOSE CONCRETE AND PROVIDE 10M DOWELS AT 150mm SPACING WITH A MINIMUM 100 EMBEDMENT.
4. APPLY BONDING AGENT
5. FORM & FILL VOID WITH CONCRETE/CEMENTITIOUS PATCH MATERIAL

CEMENTITIOUS PATCH MATERIAL
(APPLIED IN ACCORDANCE WITH MANUFACTURES RECOMMENDATIONS)
POLYMER MODIFIED MORTAR MATERIALS:
BONDING AGENT: USE CEMENTITIOUS/LATEX SLURRY BONDING AGENT
OF THE SAME MATERIALS AS THE PATCHING OR REPAIR IN ALL
APPLICATIONS PATCH MATERIAL
DELAMINATION REPAIRS:
-FA-S6-CONCRETE BY KING
-SIKATOP 123 BY SIKKA CANADA INC.
-RENDOROC HB BY FOSROC INC.

REFER TO ARCHITECTURAL FOR EXACT LOCATIONS AND NUMBER OF AREAS