

**CONSTRUCTION NOTES**

- CONTRACTOR SHALL CONDUCT A SITE REVIEW PRIOR TO PRICING TO BECOME FAMILIAR WITH THE SITE CONDITIONS, VERIFY ALL LOCATIONS, SIZES, AND CONNECTIONS ON SITE AND REPORT ANY DISCREPANCIES TO THE CONSULTANT WITH PROPOSED RESOLUTION AND OBTAIN CONSULTANT'S APPROVAL.
- ALL EXISTING SERVICES THAT ARE NOT SHOWN ON THE DRAWINGS AND ARE EXPOSED DURING DEMOLITION/CONSTRUCTION SHALL BE VERIFIED BY THE CONTRACTOR AS TO THE SOURCE AND ROUTING AND SHALL BE REPORTED TO THE CONSULTANT WITH PROPOSED RESOLUTIONS.
- ALL BASE BUILDING SERVICES NOT IN SCOPE ARE TO REMAIN ON AND INTACT DURING THE DURATION OF WORK, WIRING, CONDUIT, AND EQUIPMENT REQUIRED TO MAINTAIN SERVICE SHALL BE TEMPORARILY SUPPORTED, RE-ROUTED, SERVICED, OR RELOCATED AS REQUIRED. ANY LOSS OF SERVICES TO EXISTING BASE BUILDING OUTSIDE OF SCOPE OF WORK SHALL BE COORDINATED WITH FACILITY MANAGEMENT.
- ALL EQUIPMENT AND DEVICES SHOWN ARE APPROXIMATE LOCATIONS. EXACT LOCATIONS AND MOUNTING HEIGHTS SHALL BE COORDINATED ON SITE WITH OTHER TRADES AND CONSULTANT.
- SEAL AND FIRESTOP ALL WALL, FLOOR, AND ROOF PENETRATIONS THROUGH FIRE RATED ASSEMBLIES.
- COORDINATE ALL ELECTRICAL WORK AND SHUTDOWNS WITH FACILITY MANAGEMENT AND OTHER TRADES.
- MAKE GOOD ALL SURFACES, INCLUDING CORE HOLES FROM DEMOLISHED OR RELOCATED EQUIPMENT/DEVICES, AFTER COMPLETION OF WORK.
- ALL MATERIALS SHALL BE DISPOSED IN ACCORDANCE WITH ALL APPLICABLE REGULATIONS.
- COORDINATE ALL WORK TO SUIT PROJECT PHASE SCHEDULE. COORDINATE PHASING WITH ARCHITECT'S DRAWINGS.
- ALL ELECTRICAL BACK BOXES SHALL BE WRAPPED WITH ACOUSTIGUARD PUTTY PADS.
- PROVIDE LABELS FOR ALL RECEPTACLES TO IDENTIFY THE CIRCUIT FEEDING THE RECEPTACLE.
- PROVIDE UPDATED, TYPE-WRITTEN PANEL DIRECTORIES AFTER COMPLETION OF WORK.
- ALL FIRE ALARM WORK SHALL BE COMPLETE BY BASE BUILDING FIRE ALARM VENDOR. PROVIDE FIRE ALARM WATCH FOR THE ENTIRE DURATION WHEN THE FIRE ALARM ZONE IS OFFLINE.
- REFER TO ARCHITECT'S DRAWINGS FOR MOUNTING HEIGHTS AND COVER PLATE COLOURS.

**ELECTRICAL DEMOLITION NOTES**

- VISIT THE SITE AND EXAMINE ALL EXISTING CONDITIONS AND ALL TENDER DOCUMENTS, DRAWINGS AND SPECIFICATIONS AND MAKE NECESSARY ALLOWANCES IN TENDER PRICE FOR REMOVAL, RELOCATION, REROUTING, RECONNECTION OF EXISTING ELECTRICAL EQUIPMENT AND WIRING FOR THE EXECUTION AND COMPLETION OF THIS PROJECT. NO ALLOWANCE WILL BE MADE LATER FOR ANY EXPENSE INCURRED BY THIS TRADE THROUGH FAILURE TO MAKE THIS EXAMINATION.
- REMOVE AND/OR RELOCATE AND REINSTALL ALL WIRING, FIXTURES AND EQUIPMENT AS NECESSARY TO ACCOMMODATE ARCHITECTURAL AND STRUCTURAL ALTERATIONS AND ADDITIONS AS INDICATED ON DRAWINGS. WIRING LOCATED IN THE AREAS BEING ALTERED OR DEMOLISHED BUT FEEDING OUTLETS OR EQUIPMENT REQUIRED TO REMAIN IN SERVICE SHALL BE REROUTED AS REQUIRED TO MAINTAIN CONTINUITY OF THESE SERVICES.
- SUPPLY, INSTALL AND MAINTAIN ALL REQUIRED TEMPORARY WIRING TO OCCUPIED AREAS AT ALL TIMES. PROVIDE ADEQUATE PROTECTION TO EXISTING WIRING AND EQUIPMENT SERVING THE EXISTING AND NEW AREAS AND PARTICULARLY WHERE WIRING AND EQUIPMENT HAVE BECOME EXPOSED TO MECHANICAL INJURY OR MOISTURE IN THE COURSE OF ALTERATIONS OR NEW CONSTRUCTION.
- EXISTING ELECTRICAL EQUIPMENT REMOVED OR INDICATED FOR REUSE SHALL BE CLEANED BEFORE INSTALLATION. ALL UNUSED CONDUIT ENTRANCE OPENINGS SHALL BE SEALED BEFORE REINSTALLATION.
- REUSED LIGHTING FIXTURES SHALL BE CLEANED AND RE-LAMPED WITH NEW LAMPS. EXISTING LIGHTING FIXTURES INDICATED FOR REUSE SHALL BE STORED SAFELY ON SITE UNTIL READY FOR INSTALLATION. ALL EXISTING LAMPS AND THE EXISTING FIXTURES NOT BEING REUSED SHALL BE HANDED OVER TO THE OWNERS.
- OBsolete CABLES AND CONDUIT SHALL BE DISCONNECTED FROM THEIR SOURCE OF SUPPLY, CUT BACK TO A SUITABLE POINT AND LEFT IN PLACE UNLESS THEY INTERFERE WITH NEW WORK IN WHICH CASE THEY SHALL BE REMOVED.
- ITEMS IDENTIFIED AS EXISTING RELOCATED SHALL BE DISCONNECTED AND RECONNECTED IN A RELOCATED POSITION ALONG WITH ALL ELECTRICAL COMPONENTS. EXTEND WIRING AS EXISTING IF IN GOOD CONDITION.
- ALL EXISTING ELECTRICAL EQUIPMENT AND MATERIAL NOT REQUIRED IN THE FINAL INSTALLATION SHALL BE CAREFULLY REMOVED AT THE APPROPRIATE TIME AND DISPOSED OF OR HANDED OVER TO OWNER.
- FIRE ALARM WIRING SHALL BE MADE SAFE FOR RECONNECTION TO NEW OR RELOCATED DEVICES, MODIFY AND EXTEND WIRING AS REQUIRED.

**DRAWING LIST**

E1.00	GENERAL SPECIFICATIONS, DETAILS AND DRAWING LEGEND
E2.00	SITE PLAN LIGHTING
E2.01	GROUND FLOOR KEY PLAN
E2.02	SECOND FLOOR KEY PLAN
E2.03	LIGHTING AND FIRE ALARM PLAN ELECTRICAL DEMOLITION
E2.04	LIGHTING AND FIRE ALARM PLAN ELECTRICAL MODIFICATION
E3.01	POWER AND SYSTEM PLAN ELECTRICAL DEMOLITION
E3.02	POWER AND SYSTEM PLAN ELECTRICAL MODIFICATION
E4.00	FIRE ALARM RISER DIAGRAM
E4.01	ELECTRICAL DETAILS
E4.02	ELECTRICAL DETAILS & PANEL SCHEDULE

**LIGHTING DEVICE & CONTROL SCHEDULE**

TYPE	DESCRIPTION	REMARKS
OS DL	CEILING MOUNTED OCCUPANCY SENSOR/DAYLIGHT SENSOR COMPLETE WITH 120V POWER PACKS	WATTSTOPPER CAT.#DT-300 SERIES
OS	WALL MOUNTED OCCUPANCY SENSOR	WATTSTOPPER CAT. #OSW-301-W
BATT	BATTERY UNIT COMPLETE WITH TWO (2) LED REMOTE HEADS, 550 WATT, 30 MINUTES RUNTIME	LUMACELL CAT. #RG24S-550-2-LD14
	WALL MOUNTED/CEILING MOUNTED TWO (2) LED 24V REMOTE HEADS	LUMACELL CAT. #MQM-2-LD14
	GREEN RUNNING MAN EXIT SIGN COMPLETE WITH BUILT IN BATTERY AND LED REMOTE HEADS	LUMACELL CAT. #LSC-1250-2-LD10
\$	WALL MOUNTED 0-10V DIMMER SWITCH	WATTSTOPPER CAT. #DCLV-2
RC	ROOM CONTROLLER	WATTSTOPPER CAT. #LMRC-102
OSL	CEILING MOUNTED OCCUPANCY SENSOR TO SUIT ROOM CONTROLLER	WATTSTOPPER CAT. #LMDC-100

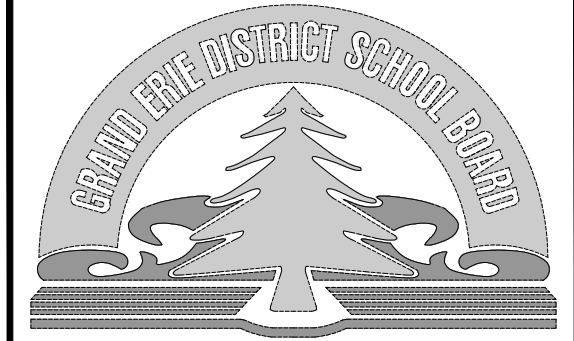
**LUMINAIRE SCHEDULE**

TYPE	VOLTAGE	LAMP TYPE			DESCRIPTION	REMARKS
		W	CT	CRI		
A	120V	42	4,000K	80	RECESSED MOUNTED 2X4 LED FIXTURE	VISIONEERING, CAT.#LRTJ-2X4-LED-840K-038L-UNV-B01X11
B	120V	24	4,000K	80	RECESSED MOUNTED 1X4 LED FIXTURE	VISIONEERING, CAT.#LRTF-1X4-LED-80-40K-038L-UNV-M53
C	120V	25	4,000K	80	4 INCH RECESSED LED POT LIGHT	GREENCREATIVE, CAT.#SPFTR4-LEM-90-40-KDIM010UNV-MD. REFLECTOR #ADR4-CW
CA	120V	7	3,500K	80	OUTDOOR 6 INCH LED CANOPY LIGHT	PATHWAY LIGHTING CAT.#6VLF2X80035KDADB W/ 6VLEDWL2SCLPF
PA	120V	110	3,000K	80	SKYLINE SMALL, 15,000 LUMENS, 3000K, TYPE 4 OPTIC, HOUSE SIDE SHIELD	ILP LIGHTING, CAT.#SAS-15L-U-30-T4-HSS
PB	120V	110	3,000K	80	SAME AS FIXTURE TYPE 'PA', EXCEPT WITHOUT HOUSE SIDE SHIELD	ILP LIGHTING, CAT.#SAS-15L-U-30-T4
WA	120V	23	3,000K	80	OUTDOOR EXTERIOR WALL MOUNTED LED	ILP LIGHTING, CAT.#SWP-3L-U-30-BRZ

- NOTES:  
 1. ALL FINISHES, TRIMS AND MOUNTING HEIGHTS TO BE CONFIRMED BY ARCHITECT  
 2. CONTRACTOR SHALL FIELD VERIFY AVAILABLE CEILING SPACE CLEARANCE FOR ALL RECESSED FIXTURES AND REPORT TO ENGINEER PRIOR TO PREPARING SUBMITTALS  
 3. ALL RECESSED LIGHT FIXTURES SHALL BE CHAIN HUNG TO ROOF DECK OR CEILING SLAB

**LEGEND**

SYMBOL	DESCRIPTION
---	EXISTING TO BE REMOVED
---	EXISTING TO REMAIN
---	NEW WORK
\$	SINGLE POLE TOGGLE SWITCH
\$ <sub>3W</sub>	3-WAY SINGLE POLE TOGGLE SWITCH
\$ <sub>SPD</sub>	SPEED CONTROL SWITCH
\$ <sub>6</sub>	LOW VOLTAGE DIMMER SWITCH
⊕	TAMPER RESISTANT DUPLEX RECEPTACLE 120V-1PH 15A
⊕ <sub>CLK</sub>	CLOCK RECEPTACLE AT HIGH LEVEL
⊕ <sub>CL</sub>	TAMPER RESISTANT DUPLEX RECEPTACLE 120V-1PH 20A
⊕ <sub>CL</sub>	TAMPER RESISTANT DUPLEX RECEPTACLE ABOVE COUNTER
⊕ <sub>CL</sub>	TAMPER RESISTANT DUPLEX RECEPTACLE ABOVE COUNTER 20A
⊕ <sub>CL</sub>	SPECIAL RECEPTACLE, AS INDICATED ON THE DRAWINGS
⊕ <sub>CL</sub>	50AMP, 250V, STOVE RECEPTACLE
⊕ <sub>CL</sub>	DIRECT POWER CONNECTION
◁ <sub>CL</sub>	DATA/NETWORK OUTLET IN THE CEILING FOR WIFI
◁	DATA/NETWORK OUTLET
◁	TELEPHONE OUTLET
◁	COMBINATION DATA/NETWORK AND TELEPHONE OUTLET
□	UNFUSED DISCONNECT SWITCH
□	COMBINATION UNFUSED DISCONNECT AND MAGNETIC STARTER
□	FUSED DISCONNECT SWITCH
ES+	EMERGENCY SWITCH - MUSHROOM TYPE PUSH BUTTON
□	MAGNETIC MOTOR STARTER (HAND-OFF-AUTO)
CR	CARD READER
ES	ELECTRIC STRIKE
INT	INTERCOM
BELL	BELL
MD	MOTION SENSOR
□	SECURITY CAMERA
□	EMERGENCY REMOTE HEAD
□	EXIT SIGN COMBINATION UNIT
BATT	MANUAL PULL STATION
AFF	ABOVE FINISHED FLOOR
GFI	GROUND FAULT INTERRUPTER
WP	WEATHER PROOF
A/F	FUSE RATING (AMPS)
EMT	ELECTRICAL METALLIC TUBING
EC	EMPTY CONDUIT
XP	EXPLOSION PROOF
'EX'	EXISTING TO REMAIN
'R'	REMOVE
'REL'	RELOCATE TO NEW LOCATION AS INDICATED
'RR'	REMOVE AND REINSTALL WITH NEW DEVICE MATCHING EXISTING
'N'	NEW
X.3	DENOTES CIRCUIT 3 IN THE PANEL X
TYP	TYPICAL
(M)	ELECTRIC MOTOR
OS	OCCUPANCY SENSOR
OS	WALL MOUNTED OCCUPANCY SENSOR
MD	MOTION DETECTOR
☑	PUMP WITH ELECTRIC MOTOR
VFD	VARIABLE FREQUENCY DRIVE
HOA	MAGNETIC MOTOR STARTER HAND-OFF-AUTO
TYP	TYPICAL
○	POT LIGHT - RECESSED
□	LUMINAIRE FIXTURE
⊕	POT LIGHT - RECESSED NIGHT LIGHT
□	PUSH BUTTON
SD	DUCT SMOKE DETECTOR
SD	SMOKE DETECTOR
SA	HARDWIRED 120V SMOKE ALARM & COMBINATION OF C.O.
PA	FLUSH CEILING MOUNTED P.A. SPEAKER BACK BOX COMPLETE WITH EMPTY CONDUITS (WIRINGS, SPEAKER, ETC. BY OTHERS)
□	FIRE ALARM PULL STATION
□	FIRE ALARM AUDIBLE DEVICE
□	FIRE ALARM AUDIBLE & VISUAL DEVICE
□	FIRE ALARM STROBE
□	ELECTRICAL PANEL
IC	INTERCOM



4		
3	ISSUED FOR PERMIT/TENDER	2023-04-22
2	ISSUED FOR COORDINATION	2023-11-23
1	ISSUED FOR COORDINATION	2023-04-28
NO	REVISIONS	DATE

DRAWINGS ARE NOT TO BE SCALED. CONTRACTOR MUST CHECK AND VERIFY ALL DIMENSIONS AND CONDITIONS ON THE PROJECT AND MUST REPORT ANY DISCREPANCIES TO THE ARCHITECT'S BEFORE PROCEEDING WITH THE WORK. THE USE OF THIS DRAWING OR PART THEREOF IS FORBIDDEN WITHOUT THE WRITTEN APPROVAL OF THE ARCHITECTS.



**BANBURY ELEMENTARY SCHOOL  
 CHILDCARE ADDITION**  
 141 BANBURY ROAD  
 BRANTFORD, ON. N3P 1E3

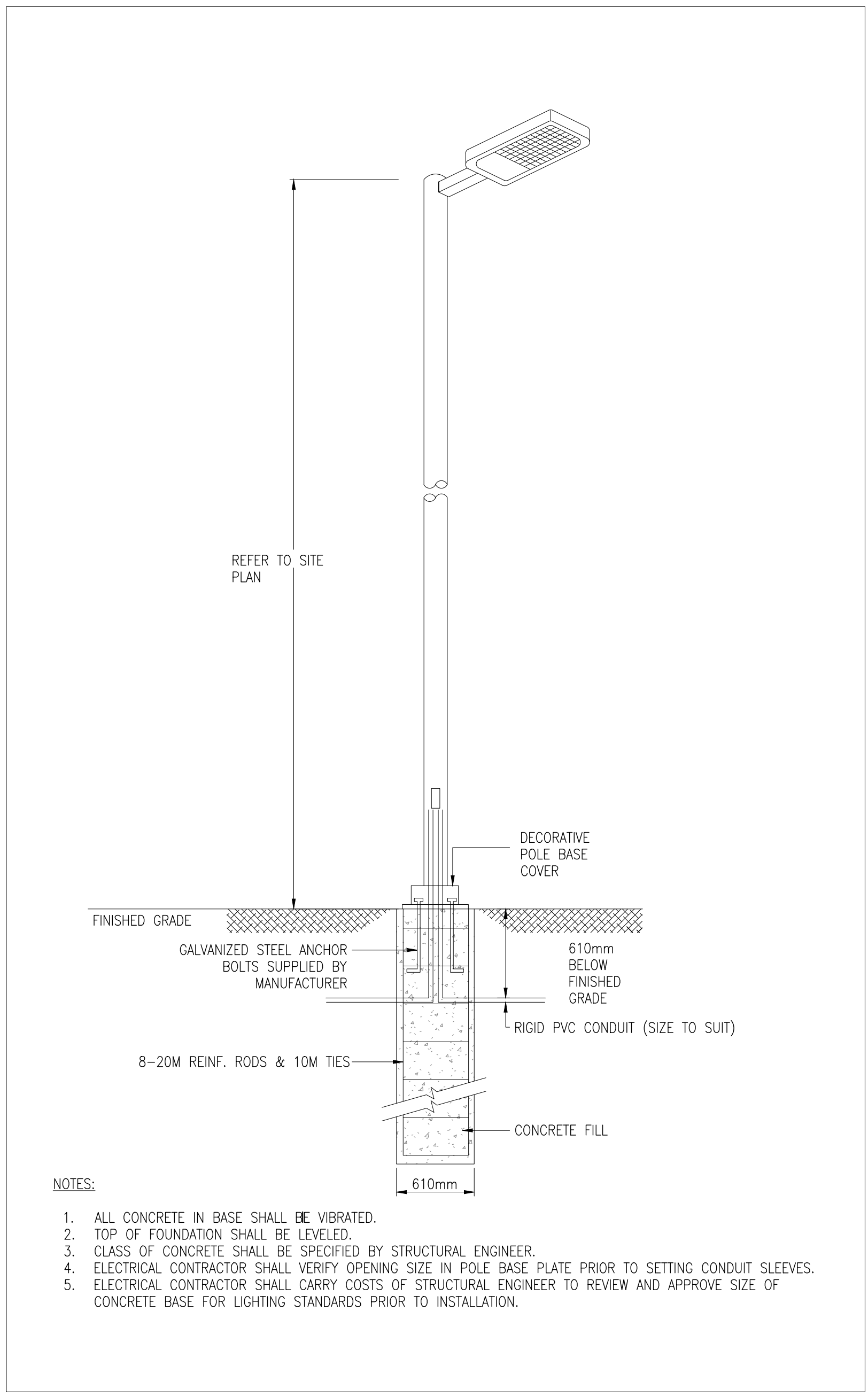
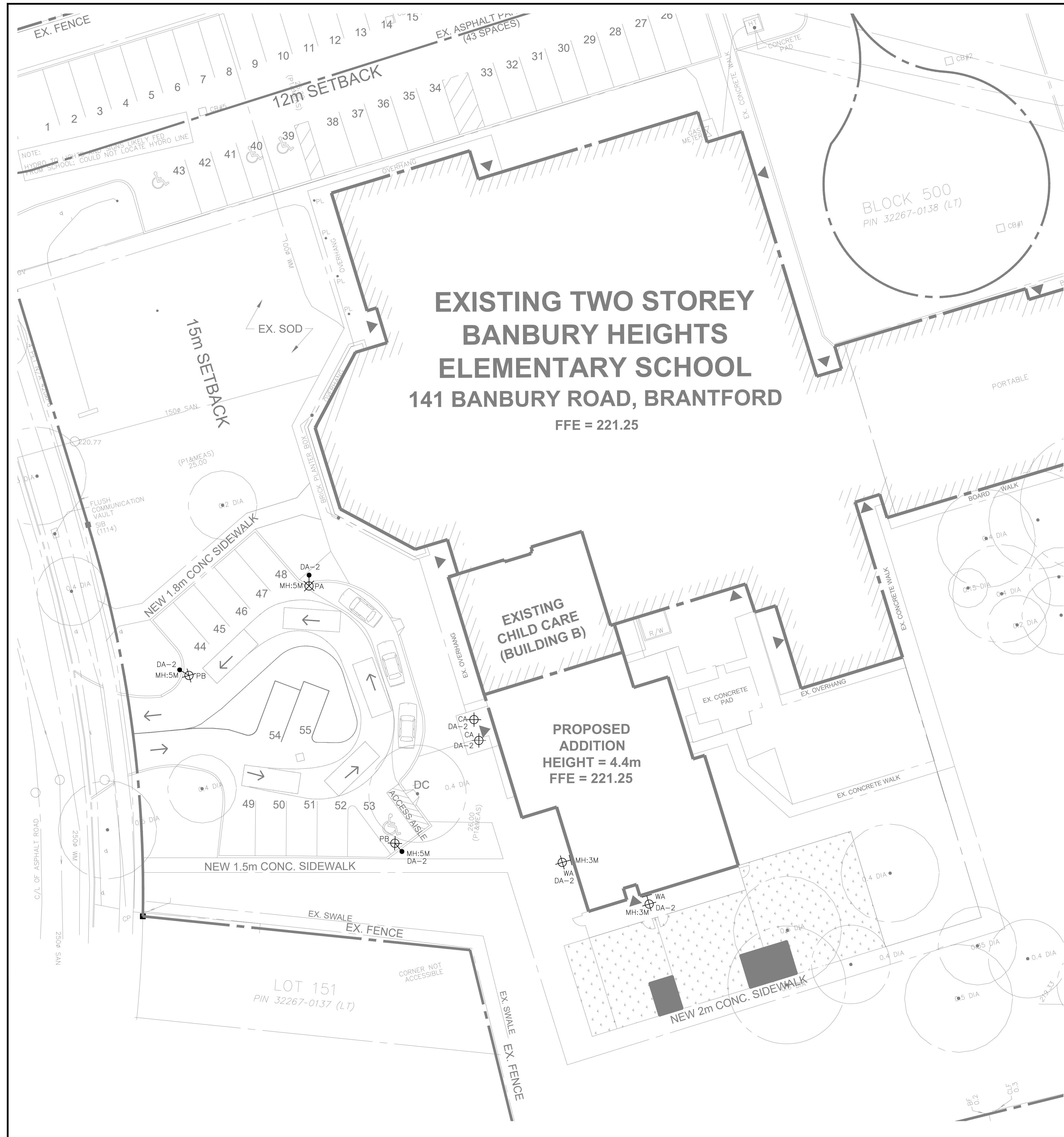
**GENERAL NOTES,  
 SPECIFICATIONS,  
 DRAWING LIST &  
 LEGEND**

**GRGURIC  
 ARCHITECTS  
 INCORPORATED**



28 KING STREET EAST, UNIT B  
 STONEY CREEK, ONTARIO, L8G 1J8  
 Tel. 905-664-8735 Fax. 905-664-8737  
 Web: www.2gai.com

SCALE: N.T.S.	PROJECT: <b>2022-08</b>
START DATE: AUGUST 2022	
DRAWN C.D.	DRAWING: <b>E1.00</b>
CHECKED D.B.	
PRINT DATE	



**1 POLE LIGHT DETAIL**  
 SCALE: N.T.S

- NOTES:
1. ALL CONCRETE IN BASE SHALL BE VIBRATED.
  2. TOP OF FOUNDATION SHALL BE LEVELED.
  3. CLASS OF CONCRETE SHALL BE SPECIFIED BY STRUCTURAL ENGINEER.
  4. ELECTRICAL CONTRACTOR SHALL VERIFY OPENING SIZE IN POLE BASE PLATE PRIOR TO SETTING CONDUIT SLEEVES.
  5. ELECTRICAL CONTRACTOR SHALL CARRY COSTS OF STRUCTURAL ENGINEER TO REVIEW AND APPROVE SIZE OF CONCRETE BASE FOR LIGHTING STANDARDS PRIOR TO INSTALLATION.



NO	REVISIONS	DATE
4		
3	ISSUED FOR PERMIT/TENDER	2023-04-22
2	ISSUED FOR COORDINATION	2023-11-23
1	ISSUED FOR COORDINATION	2023-04-28

DRAWINGS ARE NOT TO BE SCALED. CONTRACTOR MUST CHECK AND VERIFY ALL DIMENSIONS AND CONDITIONS ON THE PROJECT AND MUST REPORT ANY DISCREPANCIES TO THE ARCHITECTS BEFORE PROCEEDING WITH THE WORK. THE USE OF THIS DRAWING OR PART THEREOF IS FORBIDDEN WITHOUT THE WRITTEN APPROVAL OF THE ARCHITECTS.



**BANBURY ELEMENTARY SCHOOL**  
**CHILDCARE ADDITION**  
 141 BANBURY ROAD  
 BRANTFORD, ON. N3P 1E3

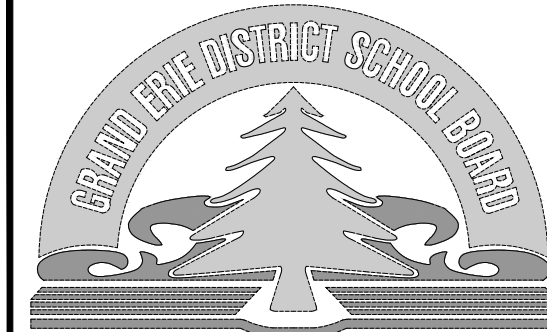
**SITE PLAN LIGHTING**

**GRGURIC ARCHITECTS INCORPORATED**



28 KING STREET EAST, UNIT B  
 STONEY CREEK, ONTARIO, L8G 1J8  
 Tel. 905-664-8735 Fax. 905-664-8737  
 Web: www.2gai.com

SCALE: 1:100	PROJECT: <b>2022-08</b>
START DATE: AUGUST 2022	
DRAWN: C.D.	DRAWING: <b>E2.00</b>
CHECKED: D.B.	
PRINT DATE:	



4		
3	ISSUED FOR PERMIT/TENDER	2023-04-22
2	ISSUED FOR COORDINATION	2023-11-23
1	ISSUED FOR COORDINATION	2023-04-28
NO	REVISIONS	DATE

DRAWINGS ARE NOT TO BE SCALED. CONTRACTOR MUST CHECK AND VERIFY ALL DIMENSIONS AND CONDITIONS ON THE PROJECT AND MUST REPORT ANY DISCREPANCIES TO THE ARCHITECT'S BEFORE PROCEEDING WITH THE WORK. THE USE OF THIS DRAWING OR PART THEREOF IS FORBIDDEN WITHOUT THE WRITTEN APPROVAL OF THE ARCHITECTS.



BANBURY ELEMENTARY SCHOOL  
CHILD CARE ADDITION  
141 BANBURY ROAD  
BRANTFORD, ON. N3P 1E3

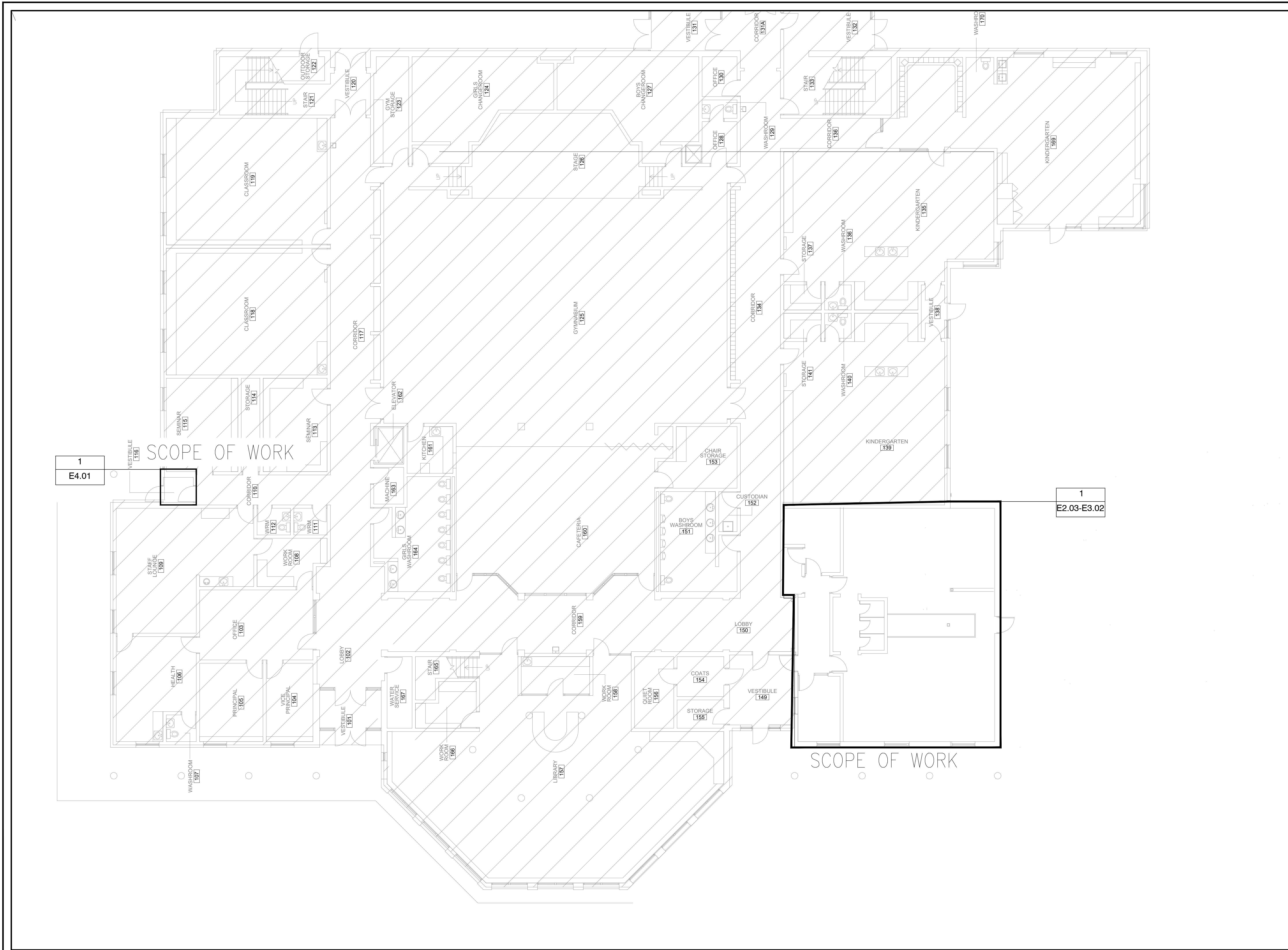
GROUND FLOOR  
KEY PLAN

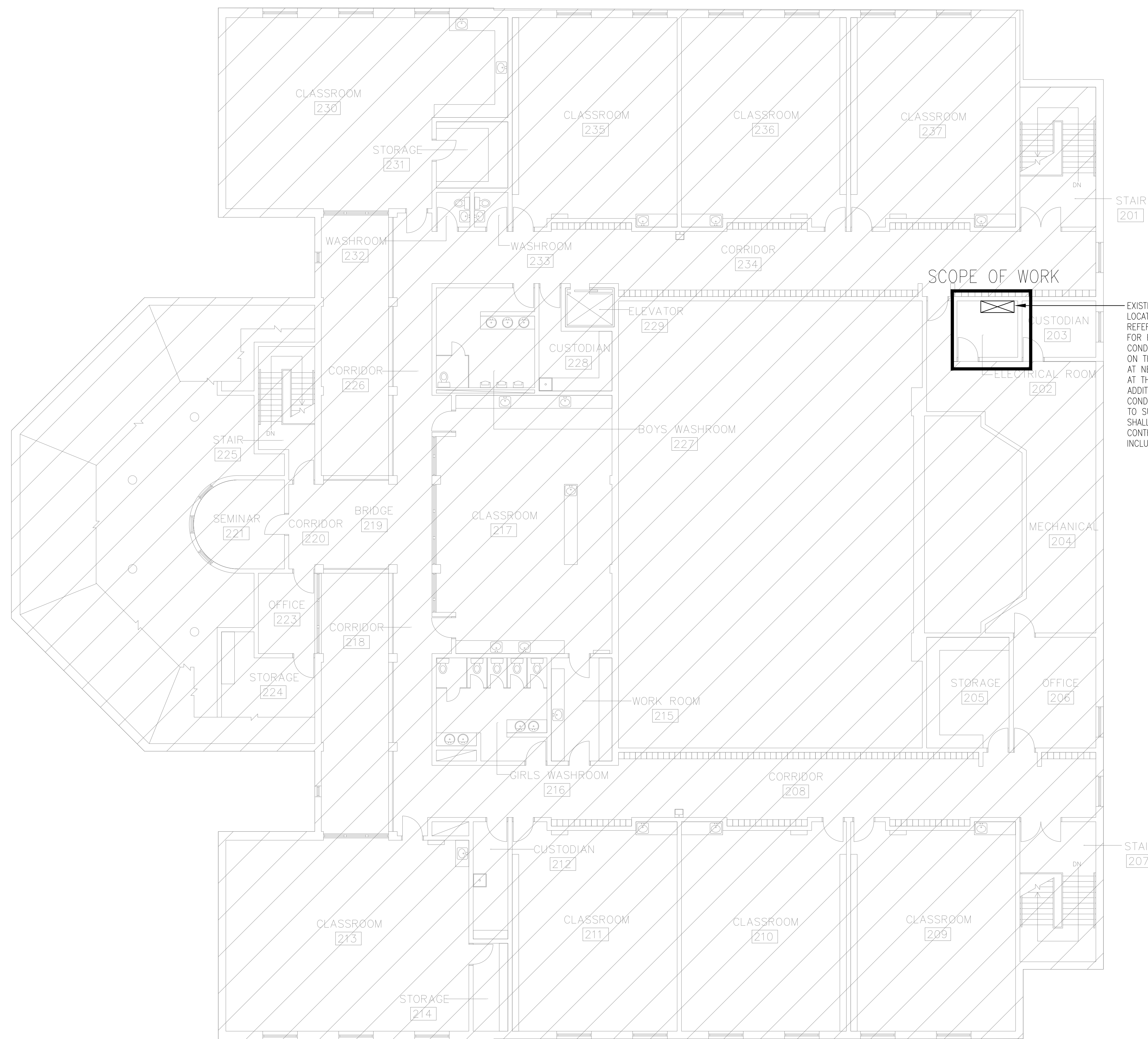
GRGURIC ARCHITECTS INCORPORATED



28 KING STREET EAST, UNIT B  
STONEY CREEK, ONTARIO, L8G 1J8  
Tel. 905-664-8735 Fax. 905-664-8737  
Web: www.2gai.com

SCALE: 1:100	PROJECT: 2022-08
START DATE: AUGUST 2022	
DRAWN: C.D.	DRAWING: E2.01
CHECKED: D.B.	
PRINT DATE:	





EXISTING MAIN SWITCHBOARD  
 LOCATED ON THE 2ND FLOOR.  
 REFER TO SINGLE LINE DIAGRAM  
 FOR FURTHER DETAIL.  
 CONDUIT AND WIRING SHALL RUN  
 ON THE ROOF AND TERMINATE  
 AT NEW PANEL LP-LA LOCATED  
 AT THE NEW CHILDCARE  
 ADDITION. PROVIDE REQUIRED  
 CONDUIT SUPPORT ON THE ROOF  
 TO SUIT. THE EXACT ROUTING  
 SHALL BE DETERMINED BY  
 CONTRACTOR ONSITE AND  
 INCLUDED IN THE TENDER BID.



4		
3	ISSUED FOR PERMIT/TENDER	2023-04-22
2	ISSUED FOR COORDINATION	2023-11-23
1	ISSUED FOR COORDINATION	2023-04-28
NO.	REVISIONS	DATE

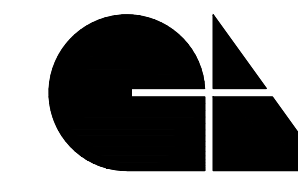
DRAWINGS ARE NOT TO BE SCALED. CONTRACTOR MUST CHECK AND VERIFY ALL DIMENSIONS AND CONDITIONS ON THE PROJECT AND MUST REPORT ANY DISCREPANCIES TO THE ARCHITECTS BEFORE PROCEEDING WITH THE WORK. THE USE OF THIS DRAWING OR PART THEREOF IS FORBIDDEN WITHOUT THE WRITTEN APPROVAL OF THE ARCHITECTS.



**BANBURY ELEMENTARY SCHOOL  
 CHILDCARE ADDITION**  
 141 BANBURY ROAD  
 BRANTFORD, ON. N3P 1E3

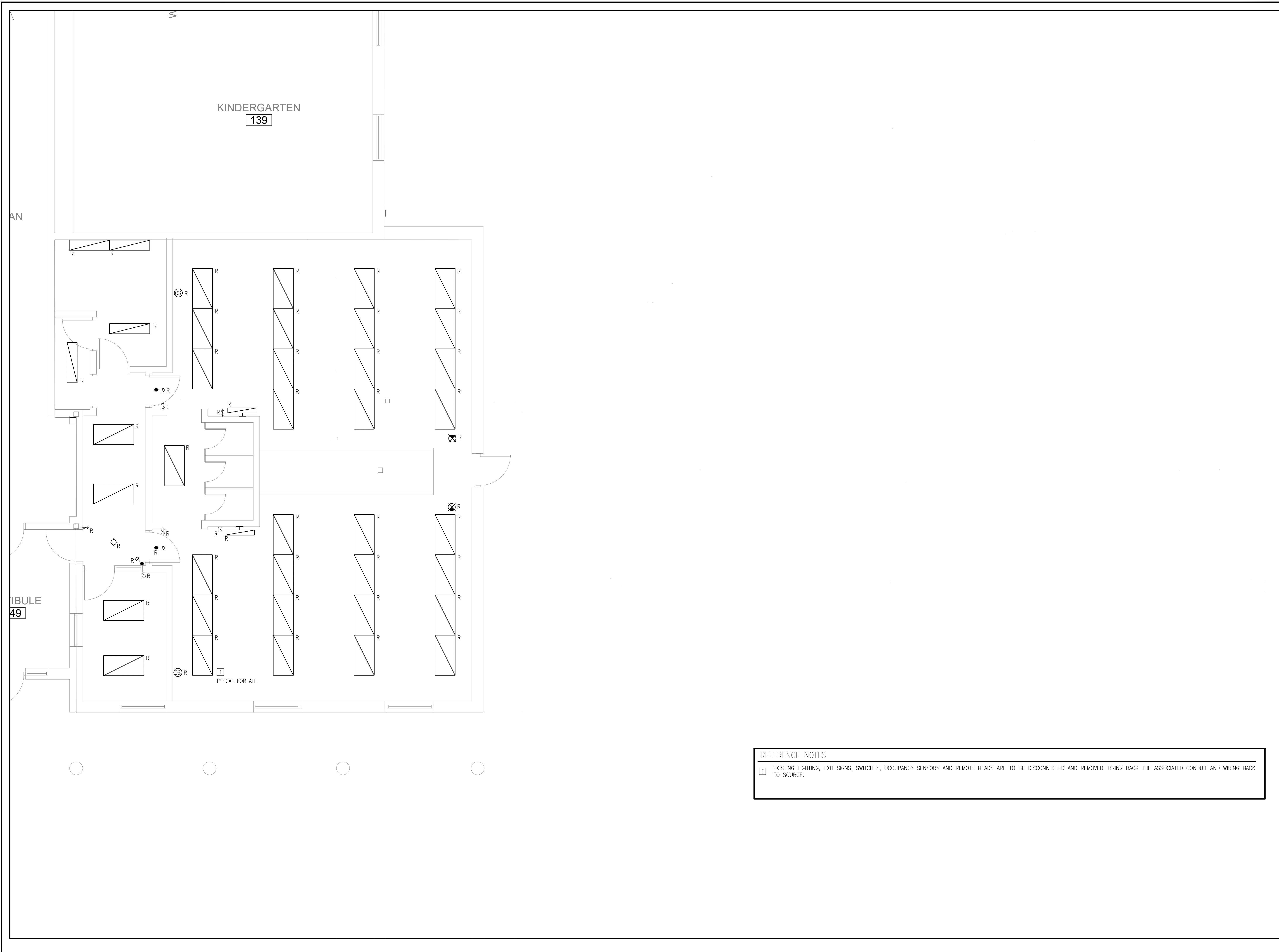
**2ND FLOOR  
 KEY PLAN**

**GRGURIC  
 ARCHITECTS  
 INCORPORATED**



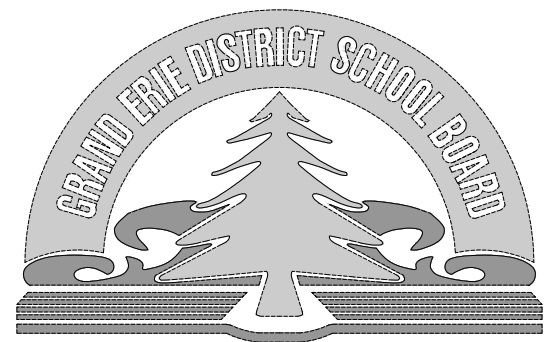
28 KING STREET EAST, UNIT B  
 STONEY CREEK, ONTARIO, L8G 1J8  
 Tel. 905-664-8735 Fax. 905-664-8737  
 Web: www.zgai.com

SCALE: 1:100	PROJECT: <b>2022-08</b>
START DATE: AUGUST 2022	
DRAWN: C.D.	DRAWING: <b>E2.02</b>
CHECKED: D.B.	
PRINT DATE:	



**REFERENCE NOTES**

1 EXISTING LIGHTING, EXIT SIGNS, SWITCHES, OCCUPANCY SENSORS AND REMOTE HEADS ARE TO BE DISCONNECTED AND REMOVED. BRING BACK THE ASSOCIATED CONDUIT AND WIRING BACK TO SOURCE.



NO.	REVISIONS	DATE
4		
3	ISSUED FOR PERMIT/TENDER	2023-04-22
2	ISSUED FOR COORDINATION	2023-11-23
1	ISSUED FOR COORDINATION	2023-04-28

DRAWINGS ARE NOT TO BE SCALED. CONTRACTOR MUST CHECK AND VERIFY ALL DIMENSIONS AND CONDITIONS ON THE PROJECT AND MUST REPORT ANY DISCREPANCIES TO THE ARCHITECT'S BEFORE PROCEEDING WITH THE WORK. THE USE OF THIS DRAWING OR PART THEREOF IS FORBIDDEN WITHOUT THE WRITTEN APPROVAL OF THE ARCHITECTS.



**BANBURY ELEMENTARY SCHOOL  
CHILD CARE ADDITION**  
141 BANBURY ROAD  
BRANTFORD, ON. N3P 1E3

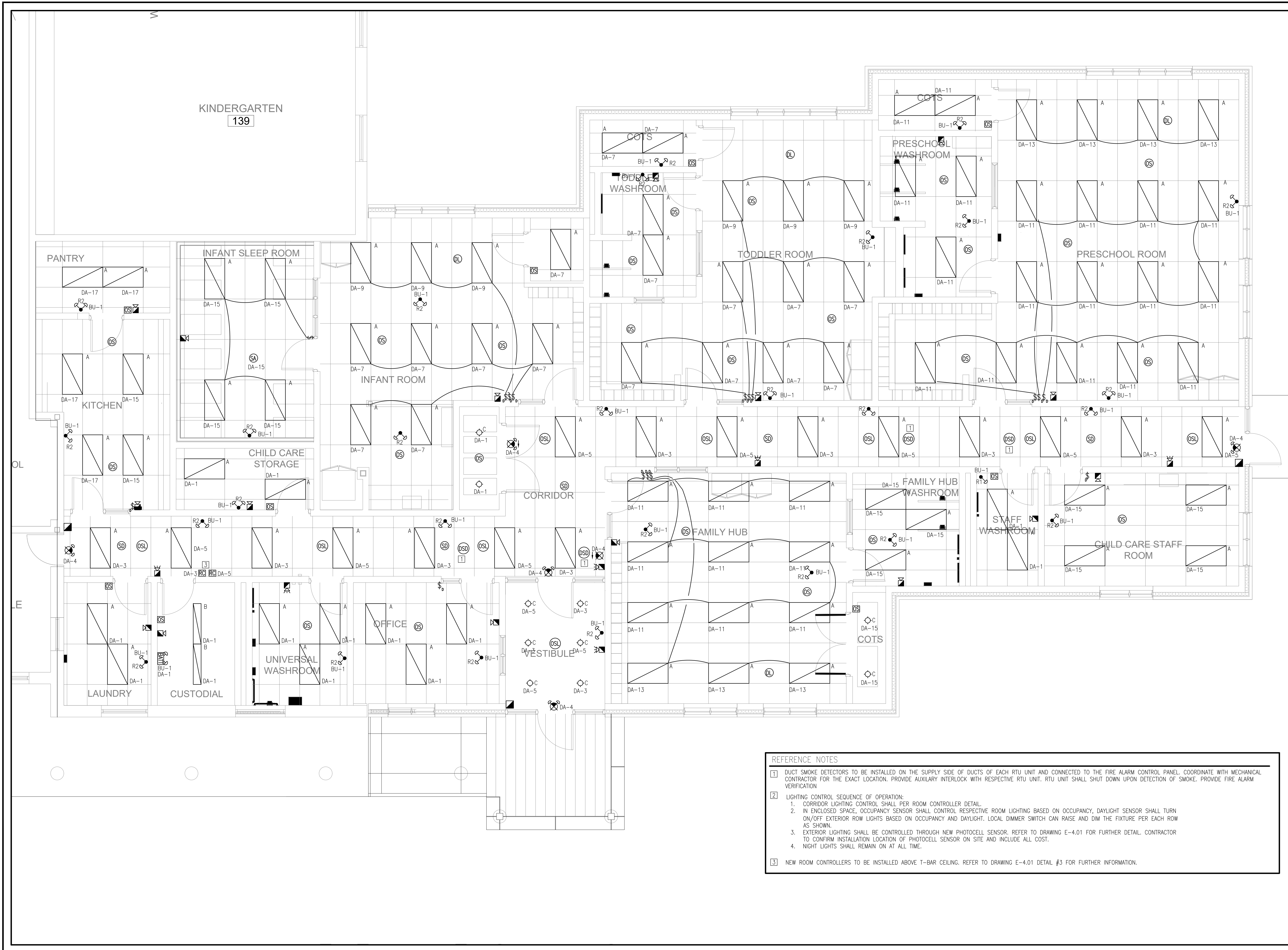
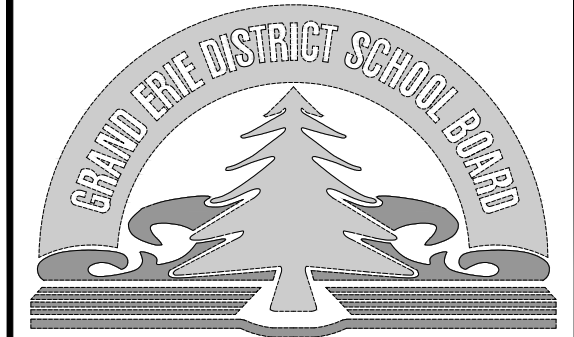
**LIGHTING & FIRE  
ALARM PLAN  
ELECTRICAL  
DEMOLITION**

**GRGURIC  
ARCHITECTS  
INCORPORATED**



28 KING STREET EAST, UNIT B  
STONE CREEK, ONTARIO, L8G 1J8  
Tel. 905-664-8735 Fax. 905-664-8737  
Web: www.2gai.com

SCALE: 1:50	PROJECT: <b>2022-08</b>
START DATE: AUGUST 2022	
DRAWN: C.D.	DRAWING: <b>E2.03</b>
CHECKED: D.B.	
PRINT DATE:	



4		
3	ISSUED FOR PERMIT/TENDER	2023-04-22
2	ISSUED FOR COORDINATION	2023-11-23
1	ISSUED FOR COORDINATION	2023-04-28
NO.	REVISIONS	DATE

DRAWINGS ARE NOT TO BE SCALED. CONTRACTOR MUST CHECK AND VERIFY ALL DIMENSIONS AND CONDITIONS ON THE PROJECT AND MUST REPORT ANY DISCREPANCIES TO THE ARCHITECT'S BEFORE PROCEEDING WITH THE WORK. THE USE OF THIS DRAWING OR PART THEREOF IS FORBIDDEN WITHOUT THE WRITTEN APPROVAL OF THE ARCHITECTS.



**BANBURY ELEMENTARY SCHOOL  
CHILD CARE ADDITION**  
141 BANBURY ROAD  
BRANTFORD, ON. N3P 1E3

**LIGHTING & FIRE  
ALARM PLAN  
ELECTRICAL  
MODIFICATION**

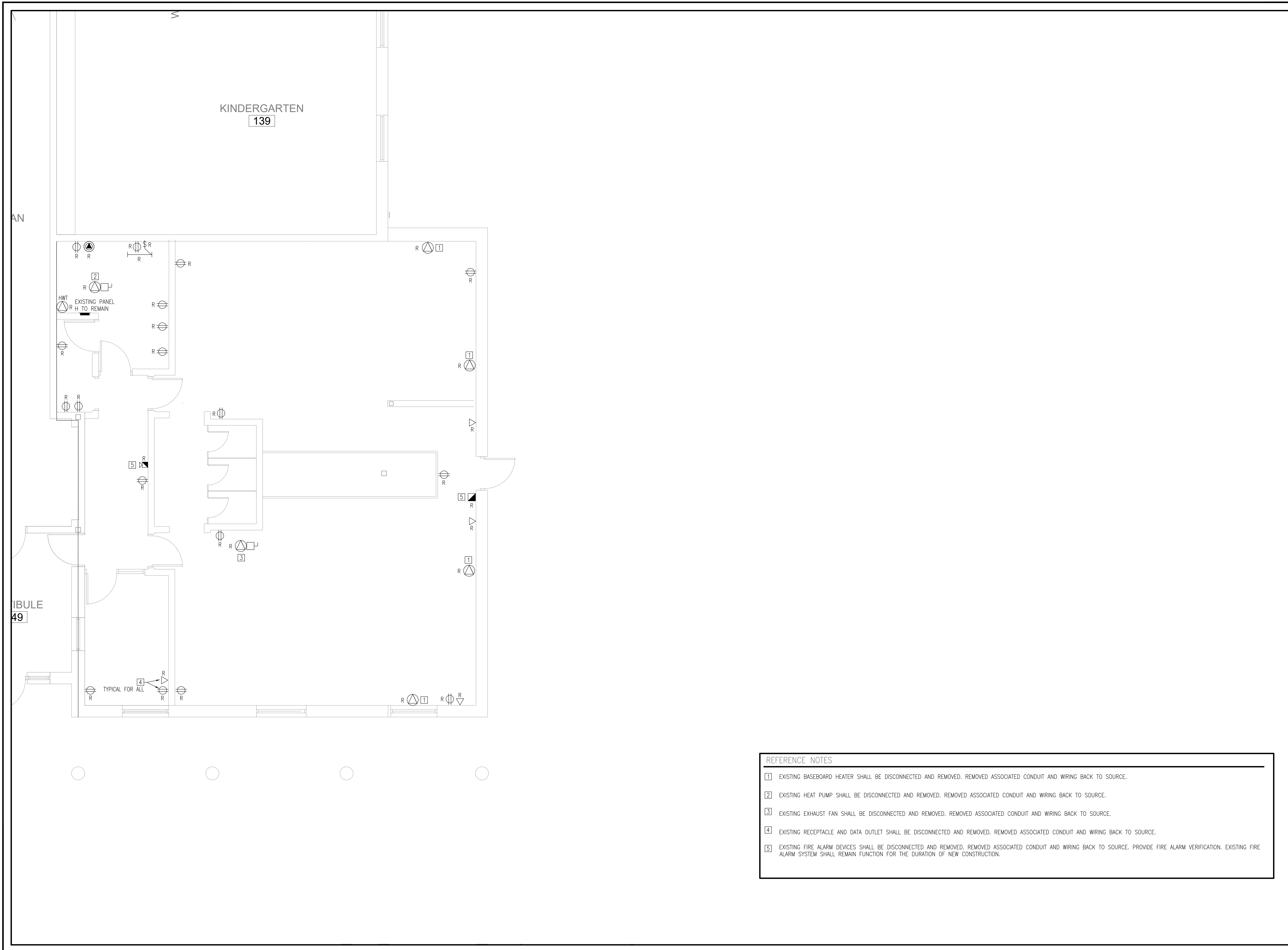
**GRGURIC  
ARCHITECTS  
INCORPORATED**



28 KING STREET EAST, UNIT B  
STONE CREEK, ONTARIO, L8G 1J8  
Tel. 905-664-8735 Fax. 905-664-8737  
Web: www.2gai.com

- REFERENCE NOTES**
- DUCT SMOKE DETECTORS TO BE INSTALLED ON THE SUPPLY SIDE OF DUCTS OF EACH RTU UNIT AND CONNECTED TO THE FIRE ALARM CONTROL PANEL. COORDINATE WITH MECHANICAL CONTRACTOR FOR THE EXACT LOCATION. PROVIDE AUXILIARY INTERLOCK WITH RESPECTIVE RTU UNIT. RTU UNIT SHALL SHUT DOWN UPON DETECTION OF SMOKE. PROVIDE FIRE ALARM VERIFICATION
  - LIGHTING CONTROL SEQUENCE OF OPERATION:  
1. CORRIDOR LIGHTING CONTROL SHALL PER ROOM CONTROLLER DETAIL.  
2. IN ENCLOSED SPACE, OCCUPANCY SENSOR SHALL CONTROL RESPECTIVE ROOM LIGHTING BASED ON OCCUPANCY, DAYLIGHT SENSOR SHALL TURN ON/OFF EXTERIOR ROW LIGHTS BASED ON OCCUPANCY AND DAYLIGHT. LOCAL DIMMER SWITCH CAN RAISE AND DIM THE FIXTURE PER EACH ROW AS SHOWN.  
3. EXTERIOR LIGHTING SHALL BE CONTROLLED THROUGH NEW PHOTOCELL SENSOR. REFER TO DRAWING E-4.01 FOR FURTHER DETAIL. CONTRACTOR TO CONFIRM INSTALLATION LOCATION OF PHOTOCELL SENSOR ON SITE AND INCLUDE ALL COST.  
4. NIGHT LIGHTS SHALL REMAIN ON AT ALL TIME.
  - NEW ROOM CONTROLLERS TO BE INSTALLED ABOVE T-BAR CEILING. REFER TO DRAWING E-4.01 DETAIL #3 FOR FURTHER INFORMATION.

SCALE: 1:50	PROJECT: <b>2022-08</b>
START DATE: AUGUST 2022	
DRAWN: C.D.	DRAWING: <b>E2.04</b>
CHECKED: D.B.	
PRINT DATE:	



NO	REVISIONS	DATE
4		
3	ISSUED FOR PERMIT/TENDER	2023-04-22
2	ISSUED FOR COORDINATION	2023-11-23
1	ISSUED FOR COORDINATION	2023-04-28

DRAWINGS ARE NOT TO BE SCALED. CONTRACTOR MUST CHECK AND VERIFY ALL DIMENSIONS AND CONDITIONS ON THE PROJECT AND MUST REPORT ANY DISCREPANCIES TO THE ARCHITECT'S BEFORE PROCEEDING WITH THE WORK. THE USE OF THIS DRAWING OR PART THEREOF IS FORBIDDEN WITHOUT THE WRITTEN APPROVAL OF THE ARCHITECTS.



**BANBURY ELEMENTARY SCHOOL  
CHILD CARE ADDITION**  
141 BANBURY ROAD  
BRANTFORD, ON. N3P 1E3

**POWER AND SYSTEM PLAN  
ELECTRICAL DEMOLITION**

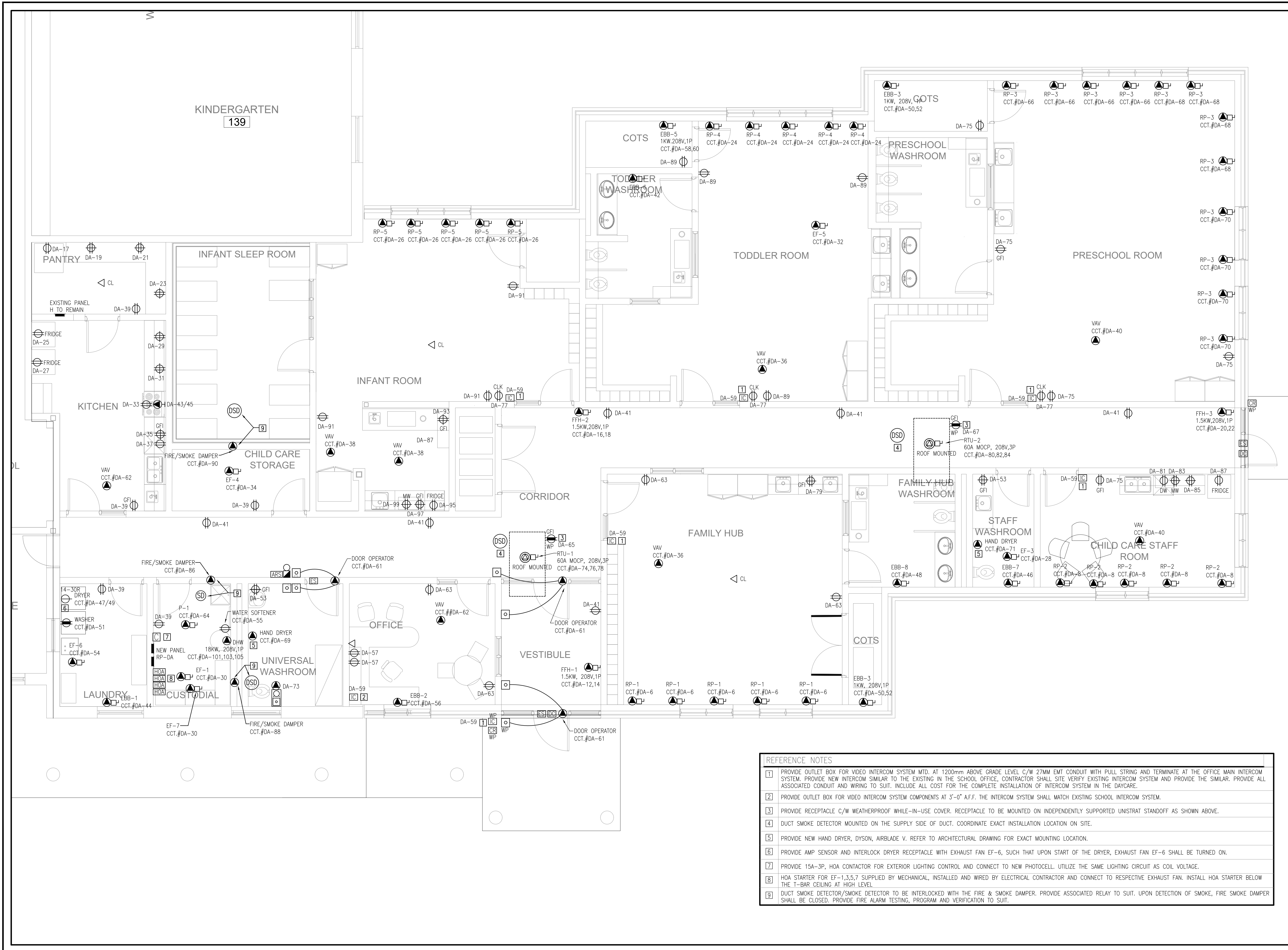
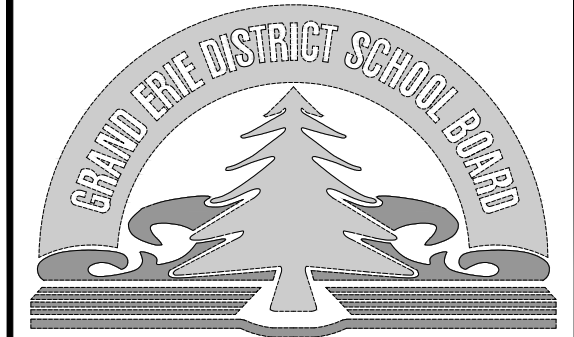
**GRGURIC ARCHITECTS INCORPORATED**



28 KING STREET EAST, UNIT B  
STONE CREEK, ONTARIO, L8G 1J8  
Tel. 905-664-8735 Fax. 905-664-8737  
Web: www.2gai.com

SCALE: 1:50	PROJECT: <b>2022-08</b>
START DATE: AUGUST 2022	
DRAWN: C.D.	DRAWING: <b>E3.01</b>
CHECKED: D.B.	
PRINT DATE:	

- REFERENCE NOTES**
- 1 EXISTING BASEBOARD HEATER SHALL BE DISCONNECTED AND REMOVED. REMOVED ASSOCIATED CONDUIT AND WIRING BACK TO SOURCE.
  - 2 EXISTING HEAT PUMP SHALL BE DISCONNECTED AND REMOVED. REMOVED ASSOCIATED CONDUIT AND WIRING BACK TO SOURCE.
  - 3 EXISTING EXHAUST FAN SHALL BE DISCONNECTED AND REMOVED. REMOVED ASSOCIATED CONDUIT AND WIRING BACK TO SOURCE.
  - 4 EXISTING RECEPTACLE AND DATA OUTLET SHALL BE DISCONNECTED AND REMOVED. REMOVED ASSOCIATED CONDUIT AND WIRING BACK TO SOURCE.
  - 5 EXISTING FIRE ALARM DEVICES SHALL BE DISCONNECTED AND REMOVED. REMOVED ASSOCIATED CONDUIT AND WIRING BACK TO SOURCE. PROVIDE FIRE ALARM VERIFICATION. EXISTING FIRE ALARM SYSTEM SHALL REMAIN FUNCTION FOR THE DURATION OF NEW CONSTRUCTION.



REFERENCE NOTES	
[1]	PROVIDE OUTLET BOX FOR VIDEO INTERCOM SYSTEM MTD. AT 1200mm ABOVE GRADE LEVEL C/W 27MM EMT CONDUIT WITH PULL STRING AND TERMINATE AT THE OFFICE MAIN INTERCOM SYSTEM. PROVIDE NEW INTERCOM SIMILAR TO THE EXISTING IN THE SCHOOL OFFICE, CONTRACTOR SHALL SITE VERIFY EXISTING INTERCOM SYSTEM AND PROVIDE THE SIMILAR. PROVIDE ALL ASSOCIATED CONDUIT AND WIRING TO SUIT. INCLUDE ALL COST FOR THE COMPLETE INSTALLATION OF INTERCOM SYSTEM IN THE DAYCARE.
[2]	PROVIDE OUTLET BOX FOR VIDEO INTERCOM SYSTEM COMPONENTS AT 3'-0" A.F.F. THE INTERCOM SYSTEM SHALL MATCH EXISTING SCHOOL INTERCOM SYSTEM.
[3]	PROVIDE RECEPTACLE C/W WEATHERPROOF WHILE-IN-USE COVER. RECEPTACLE TO BE MOUNTED ON INDEPENDENTLY SUPPORTED UNISTRAT STANDOFF AS SHOWN ABOVE.
[4]	DUCT SMOKE DETECTOR MOUNTED ON THE SUPPLY SIDE OF DUCT. COORDINATE EXACT INSTALLATION LOCATION ON SITE.
[5]	PROVIDE NEW HAND DRYER, DYSON, AIRBLADE V. REFER TO ARCHITECTURAL DRAWING FOR EXACT MOUNTING LOCATION.
[6]	PROVIDE AMP SENSOR AND INTERLOCK DRYER RECEPTACLE WITH EXHAUST FAN EF-6, SUCH THAT UPON START OF THE DRYER, EXHAUST FAN EF-6 SHALL BE TURNED ON.
[7]	PROVIDE 15A-3P, HOA CONTACTOR FOR EXTERIOR LIGHTING CONTROL AND CONNECT TO NEW PHOTOCELL. UTILIZE THE SAME LIGHTING CIRCUIT AS COIL VOLTAGE.
[8]	HOA STARTER FOR EF-1,3,5,7 SUPPLIED BY MECHANICAL. INSTALLED AND WIRED BY ELECTRICAL CONTRACTOR AND CONNECT TO RESPECTIVE EXHAUST FAN. INSTALL HOA STARTER BELOW THE T-BAR CEILING AT HIGH LEVEL.
[9]	DUCT SMOKE DETECTOR/SMOKE DETECTOR TO BE INTERLOCKED WITH THE FIRE & SMOKE DAMPER. PROVIDE ASSOCIATED RELAY TO SUIT. UPON DETECTION OF SMOKE, FIRE SMOKE DAMPER SHALL BE CLOSED. PROVIDE FIRE ALARM TESTING, PROGRAM AND VERIFICATION TO SUIT.



NO.	REVISIONS	DATE
4		
3	ISSUED FOR PERMIT/TENDER	2023-04-22
2	ISSUED FOR COORDINATION	2023-11-23
1	ISSUED FOR COORDINATION	2023-04-28

DRAWINGS ARE NOT TO BE SCALED. CONTRACTOR MUST CHECK AND VERIFY ALL DIMENSIONS AND CONDITIONS ON THE PROJECT AND MUST REPORT ANY DISCREPANCIES TO THE ARCHITECTS BEFORE PROCEEDING WITH THE WORK. THE USE OF THIS DRAWING OR PART THEREOF IS FORBIDDEN WITHOUT THE WRITTEN APPROVAL OF THE ARCHITECTS.



**BANBURY ELEMENTARY SCHOOL  
CHILD CARE ADDITION**  
141 BANBURY ROAD  
BRANTFORD, ON. N3P 1E3

**POWER AND  
SYSTEM PLAN  
ELECTRICAL  
MODIFICATIONS**

**GRGURIC  
ARCHITECTS  
INCORPORATED**

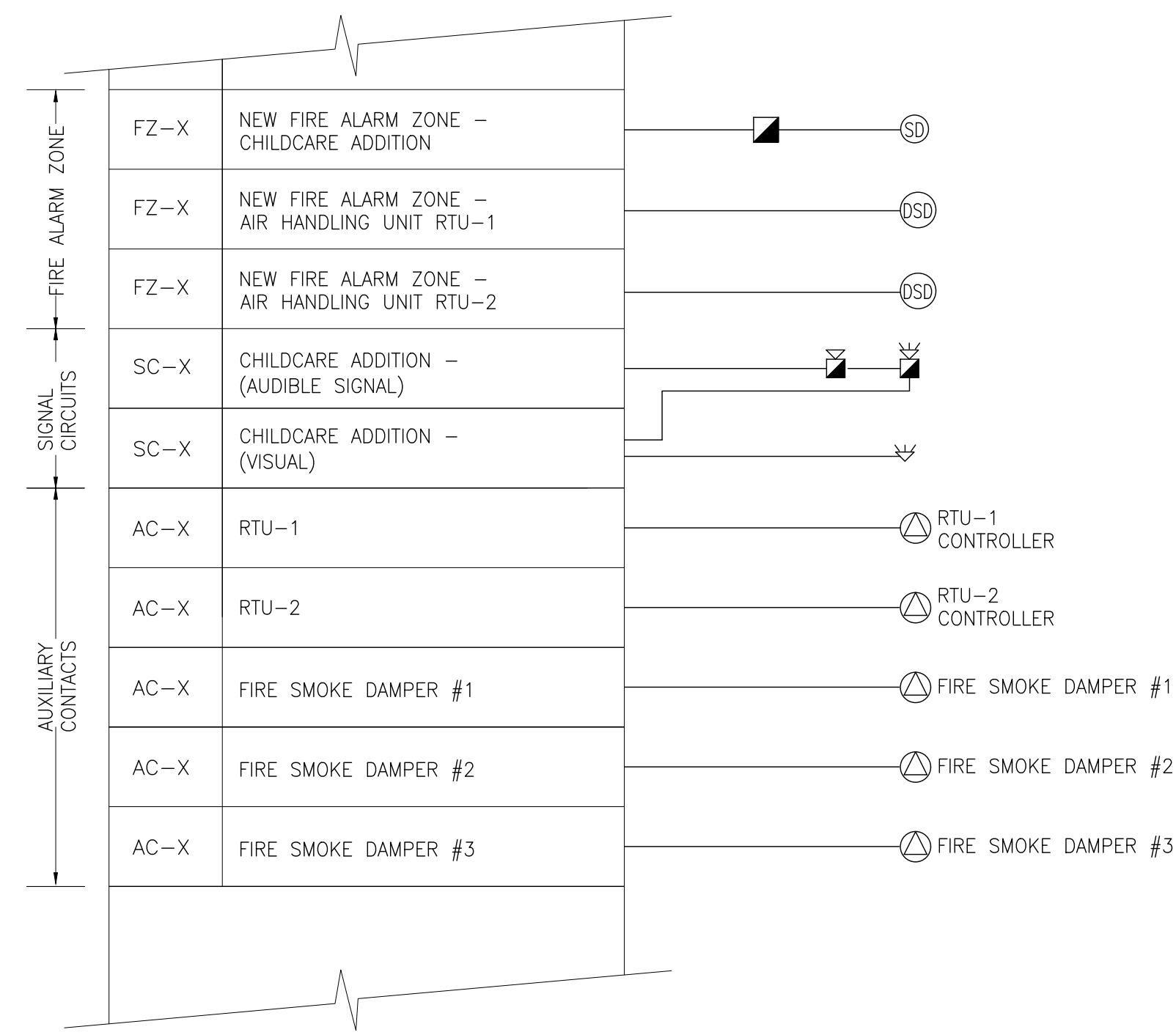


28 KING STREET EAST, UNIT B  
STONE CREEK, ONTARIO, L8G 1J8  
Tel. 905-664-8735 Fax. 905-664-8737  
Web: www.2gai.com

SCALE: 1:50	PROJECT: <b>2022-08</b>
START DATE: AUGUST 2022	
DRAWN: C.D.	DRAWING: <b>E3.02</b>
CHECKED: D.B.	
PRINT DATE:	



DETAIL #1 - PARTIAL FIRE ALARM RISER DIAGRAM



GENERAL NOTES:

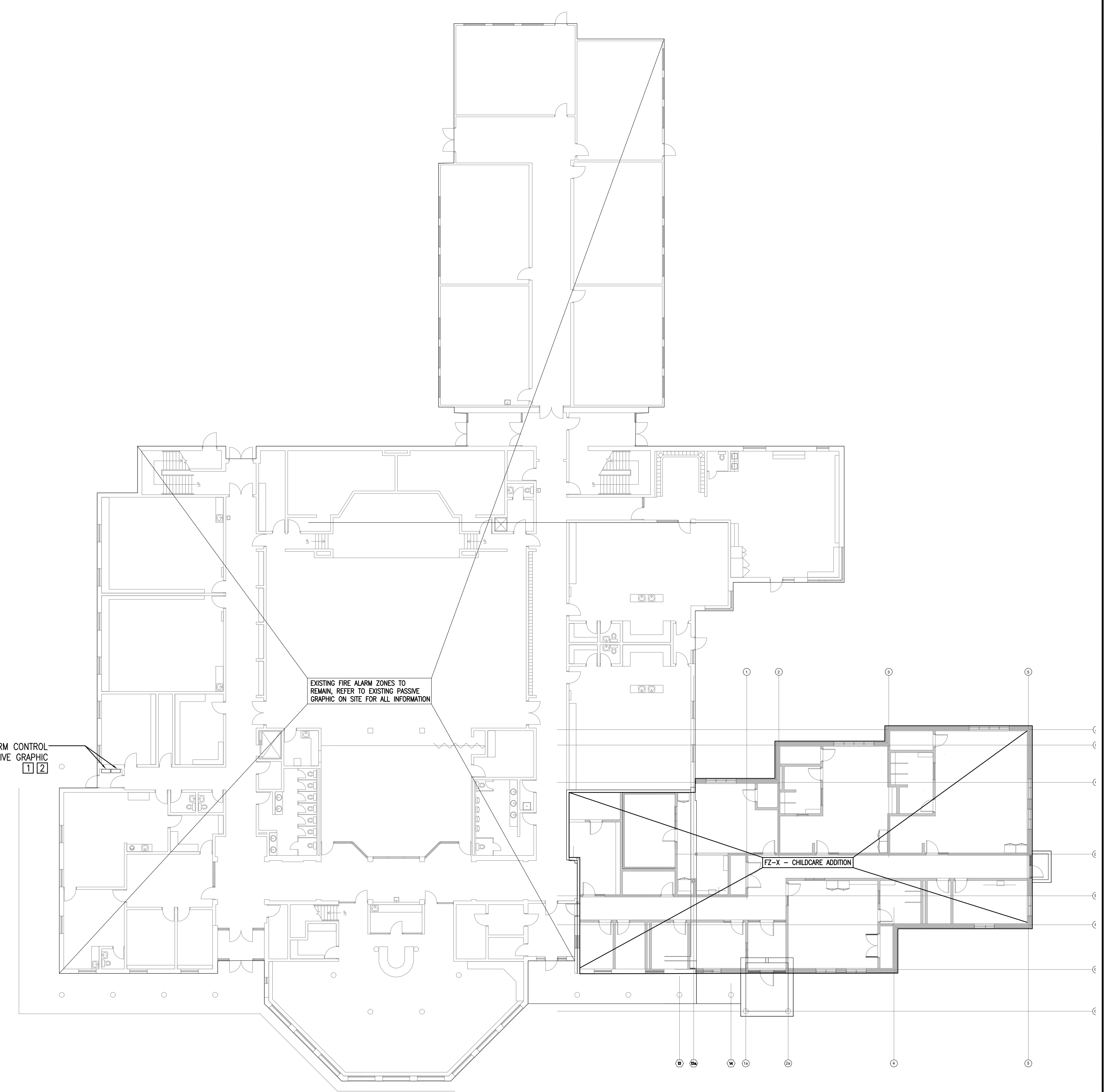
- OBTAIN APPROVED FINAL ROOM NAMES AND NUMBERS AND ARCHITECTURAL DRAWINGS BEFORE ANY PROGRAMMING OF FIRE ALARM CONTROL PANEL OR ORDERING PASSIVE GRAPHICS AND MODIFY FIRE ALARM ANNUNCIATOR TO SUIT.
- ALL WIRING TO BE RUN IN CONDUITS AND IN ACCORDANCE WITH MANUFACTURER'S RECOMMENDATION.
- PROVIDE SEPARATE PATH FOR FEED AND RETURN RACEWAYS.
- FOR EXACT QUANTITY OF FIRE ALARM DEVICES, REFER TO FLOOR PLANS.
- DUCT SMOKE DETECTOR TO BE MOUNTED ON THE SUPPLY SIDE OF ROOF TOP UNITS. COORDINATE EXACT INSTALLATION LOCATION WITH MECHANICAL CONTRACTOR ON SITE.
- FIRE ALARM SYSTEM SHALL AT MINIMUM BE TESTED ACCORDING TO THE PROCEDURES OUTLINED IN CAN/ULC-S537 AND INTEGRATED SYSTEM TESTING IN ACCORDANCE WITH CAN/ULC-S1001. CONTRACTOR TO TEST AND VERIFY EACH DEVICE PER ZONE AND TEST ALL DEVICES CONNECTED TO THE INPUT CIRCUITS AS PER ULC STANDARDS. PROVIDE NEW WIRING FROM MAIN PANEL AND ANNUNCIATOR AS REQUIRED.
- ALL FIRE ALARM WIRING TO BE RUN IN CONCRETE SLAB TO PROVIDE MINIMUM 2-HR FIRE RATING. WHERE 2-HR FIRE RATING CANNOT BE ACHIEVED, PROVIDE MINERAL INSULATED (M) CABLE.
- ALL INITIATING CIRCUITS TO BE CLASS A WIRING. ALL SIGNAL CIRCUITS TO BE CLASS B WIRING. AUDIBLE AND AUDIBLE/VISUAL TO BE WIRED ON A-B CIRCUITS.
- INCLUDE FOR ADDITIONAL BOOSTER PANEL TO MEET THE REQUIREMENT OF NEW STROBE LIGHTS CIRCUITS. INCLUDE ASSOCIATED CONDUIT, WIRING, INCLUDE ALL COST IN THE TENDER.

DETAIL NOTES:

- EXISTING PASSIVE GRAPHIC SHALL BE REPLACED WITH NEW TO INCLUDE THE NEW CHILDCARE ADDITION. CONTRACTOR SHALL COORDINATE WITH EDWARD AND PRODUCE THE NEW FIRE ALARM GRAPHIC. EXISTING FIRE ALARM GRAPHIC CAN BE OBTAINED ON SITE. INCLUDE PREPARATION OF NEW FIRE ALARM PASSIVE GRAPHIC DRAWING INCLUDE CREATION OF NEW ZONE PER THE ARCHITECTURAL DRAWING. REFER TO THIS DRAWING FOR THE NEW EXPANSION AND ADDITIONAL FIRE ALARM ZONE INFORMATION. UPDATE FIRE ALARM ZONE ACCORDINGLY.
- MODIFY AND UPDATE EXISTING EDWARD MAIN FIRE ALARM CONTROL PANEL TO INCLUDE NEW FIRE ALARM ZONES, SUPERVISORY ZONE, ALARM ZONE AND AUXILIARY ZONE, ETC. FOR THE NEW CHILD CARE ADDITION. PROVIDE BOOSTER PANEL AS REQUIRED COMPLETE WITH ASSOCIATED 120V CIRCUIT, CONDUIT AND WIRING TO THE NEAREST PANEL.

EXISTING FIRE ALARM CONTROL PANEL AND PASSIVE GRAPHIC 1 2

EXISTING FIRE ALARM ZONES TO REMAIN, REFER TO EXISTING PASSIVE GRAPHIC ON SITE FOR ALL INFORMATION



NO.	REVISIONS	DATE
4		
3	ISSUED FOR PERMIT/TENDER	2023-04-22
2	ISSUED FOR COORDINATION	2023-11-23
1	ISSUED FOR COORDINATION	2023-04-28

DRAWINGS ARE NOT TO BE SCALED. CONTRACTOR MUST CHECK AND VERIFY ALL DIMENSIONS AND CONDITIONS ON THE PROJECT AND MUST REPORT ANY DISCREPANCIES TO THE ARCHITECTS BEFORE PROCEEDING WITH THE WORK. THE USE OF THIS DRAWING OR PART THEREOF IS FORBIDDEN WITHOUT THE WRITTEN APPROVAL OF THE ARCHITECTS.



BANBURY ELEMENTARY SCHOOL  
CHILDCARE ADDITION  
141 BANBURY ROAD  
BRANTFORD, ON. N3P 1E3

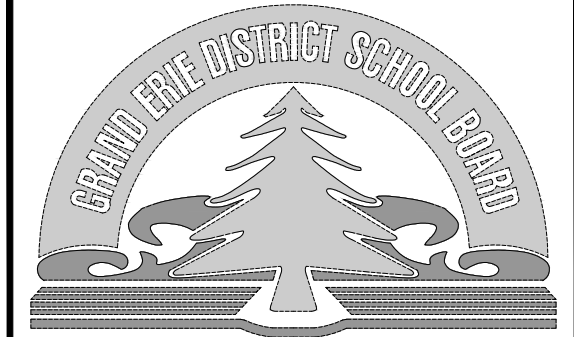
FIRE ALARM RISER DIAGRAM

GRGURIC ARCHITECTS INCORPORATED

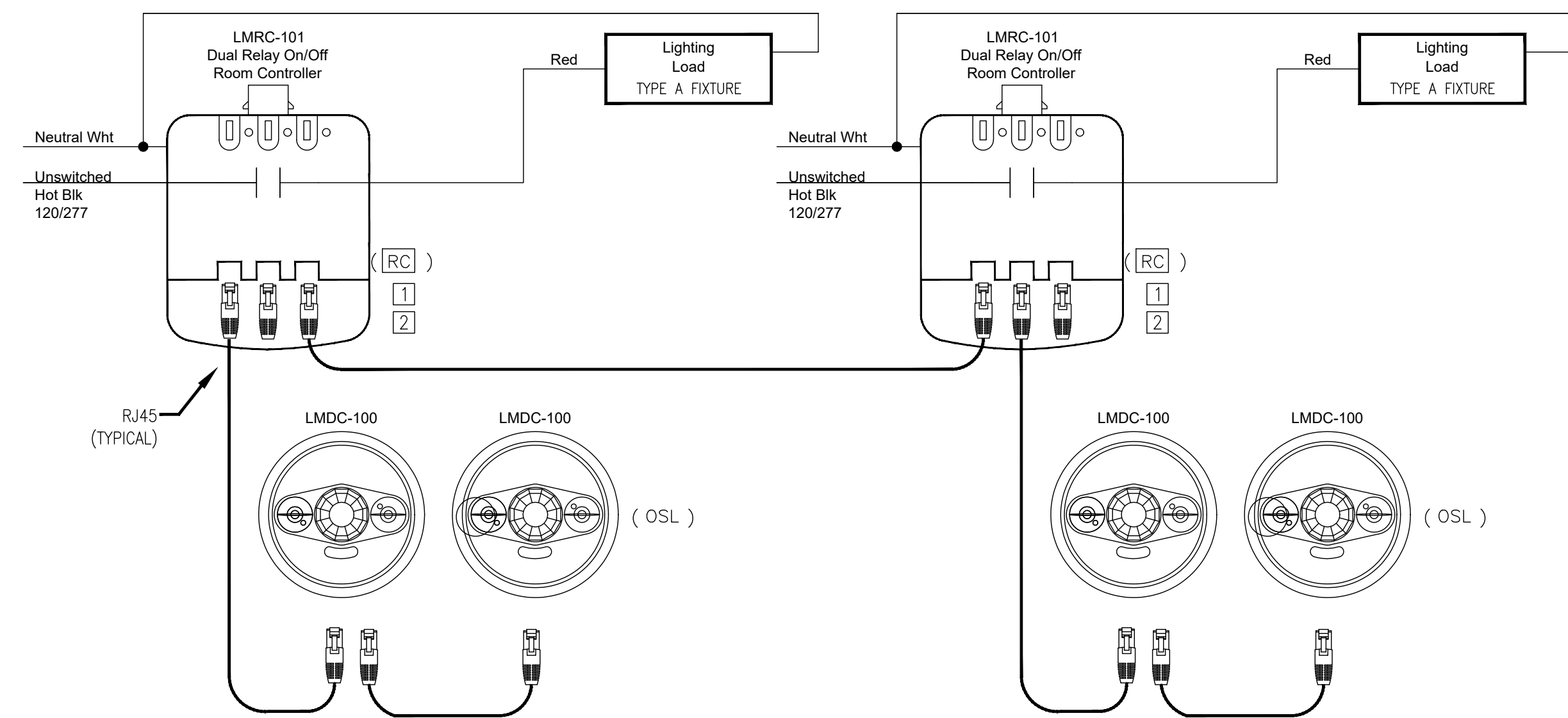


28 KING STREET EAST, UNIT B  
STONE CREEK, ONTARIO, L8G 1J8  
Tel. 905-664-8735 Fax. 905-664-8737  
Web: www.2gai.com

SCALE: 1:200	PROJECT: 2022-08
START DATE: AUGUST 2022	
DRAWN: C.D.	DRAWING: E4.00
CHECKED: D.B.	
PRINT DATE:	



DETAIL #3 - ROOM CONTROLLER - CORRIDOR & VESTIBULE LIGHTING CONTROL SCHEMATIC



NOTES:

1. DLM DEVICES SHOULD NOT BE LOOPED TOGETHER
2. 300' MAX DISTANCE BETWEEN ANY TWO DLM DEVICES
3. 1000' MAX DISTANCE FOR DLM CABLING WITHIN A ROOM NETWORK
4. MAXIMUM OF 48 DEVICES IN EACH DLM ROOM NETWORK

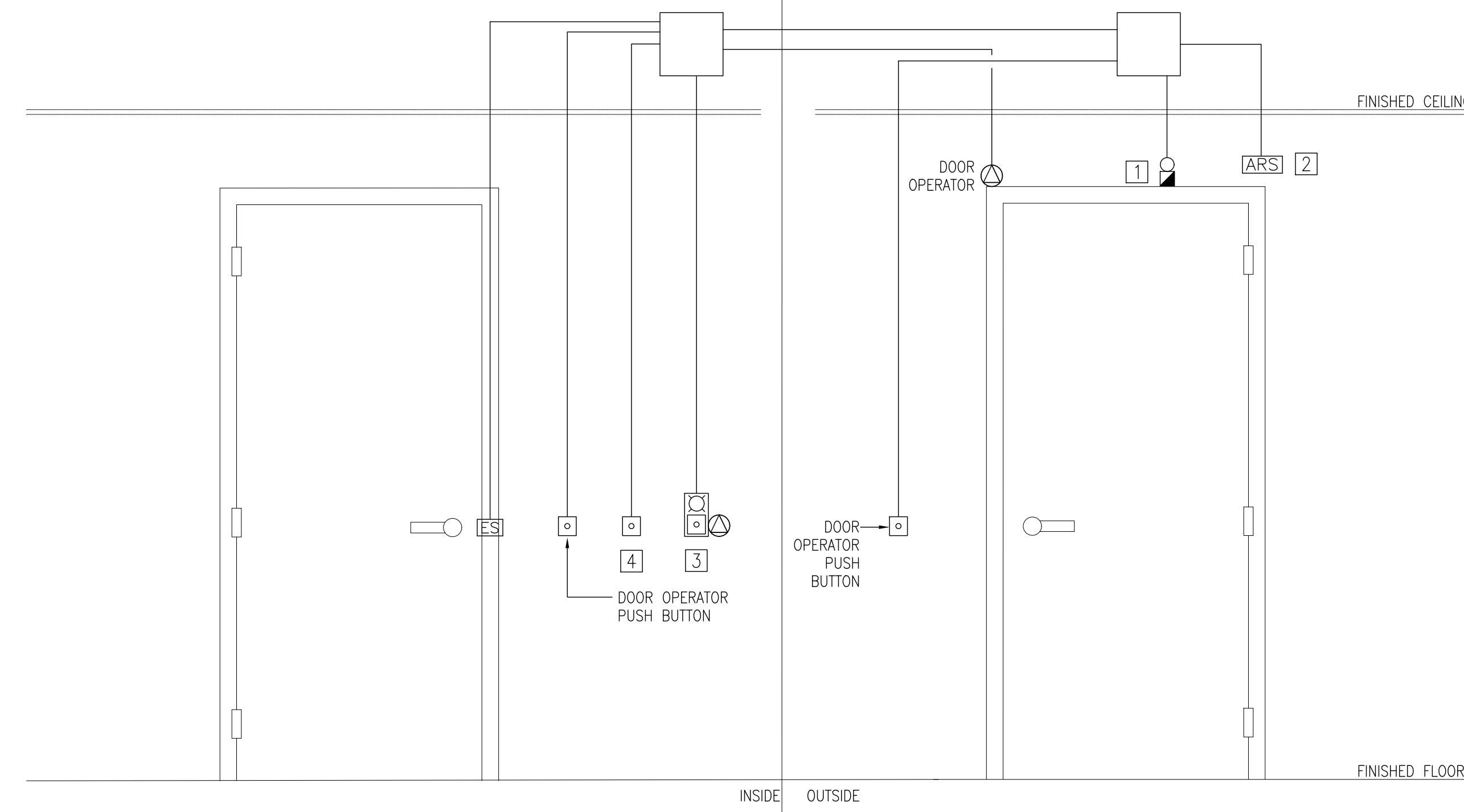
KEY NOTES

- 1 ROOM CONTROLLER SHALL BE INSTALLED ABOVE T-BAR CEILING IN THE CORRIDOR.
- 2 PROVIDE ALL REQUIRED EQUIPMENT, DEVICES AND CABLING AS RECOMMENDED BY THE MANUFACTURE FOR THE COMPLETE INSTALLATION OF THE LIGHTING CONTROL SYSTEM AND PROVIDE COMMISSIONING TO ENSURE THE SEQUENCE OF OPERATION NOTED ON THIS DRAWING IS ACHIEVED. INCLUDE ALL COSTS. PROVIDE TRAINING FOR FACILITY STAFF, ALLOW FOR MINIMUM 5 HOURS OF TRAINING ON SITE.

LIGHTING CONTROL SEQUENCE OF OPERATION.

- CORRIDOR LIGHTING & VESTIBULE LIGHTING SHALL BE CONTROLLED AS FOLLOWS:
- DURING 7AM TO 6PM, CORRIDOR LIGHTINGS & VESTIBULE LIGHTING SHALL BE ON AT ALL TIME.
  - DURING 6PM TO 7AM, CORRIDOR LIGHTINGS & VESTIBULE LIGHTING SHALL BE CONTROLLED BY OCCUPANCY SENSORS AND SHALL BE TURNED ON WHEN DETECTS THE OCCUPANCY, AND TURN OFF WHEN THE SPACE IS UNOCCUPIED FOR 30 MINUTES.

DETAIL #1 - UNIVERSAL WASHROOM DOOR DETAIL



DETAIL NOTES:

- 1 ELECTRICAL CONTRACTOR TO PROVIDE PIEZO CHIME.
- 2 ELECTRICAL CONTRACTOR TO PROVIDE 24V ASSISTANCE REQUIRED SIGN WITH WHEELCHAIR GRAPHIC SIGNATURE
- 3 ELECTRICAL CONTRACTOR TO PROVIDE COMBINED EMERGENCY PUSH BUTTON AND VISUAL SIGNAL DEVICE.
- 4 ELECTRICAL CONTRACTOR TO PROVIDE PUSH TO LOCK BUTTON COMPLETE WITH ILLUMINATION.

GENERAL NOTES:

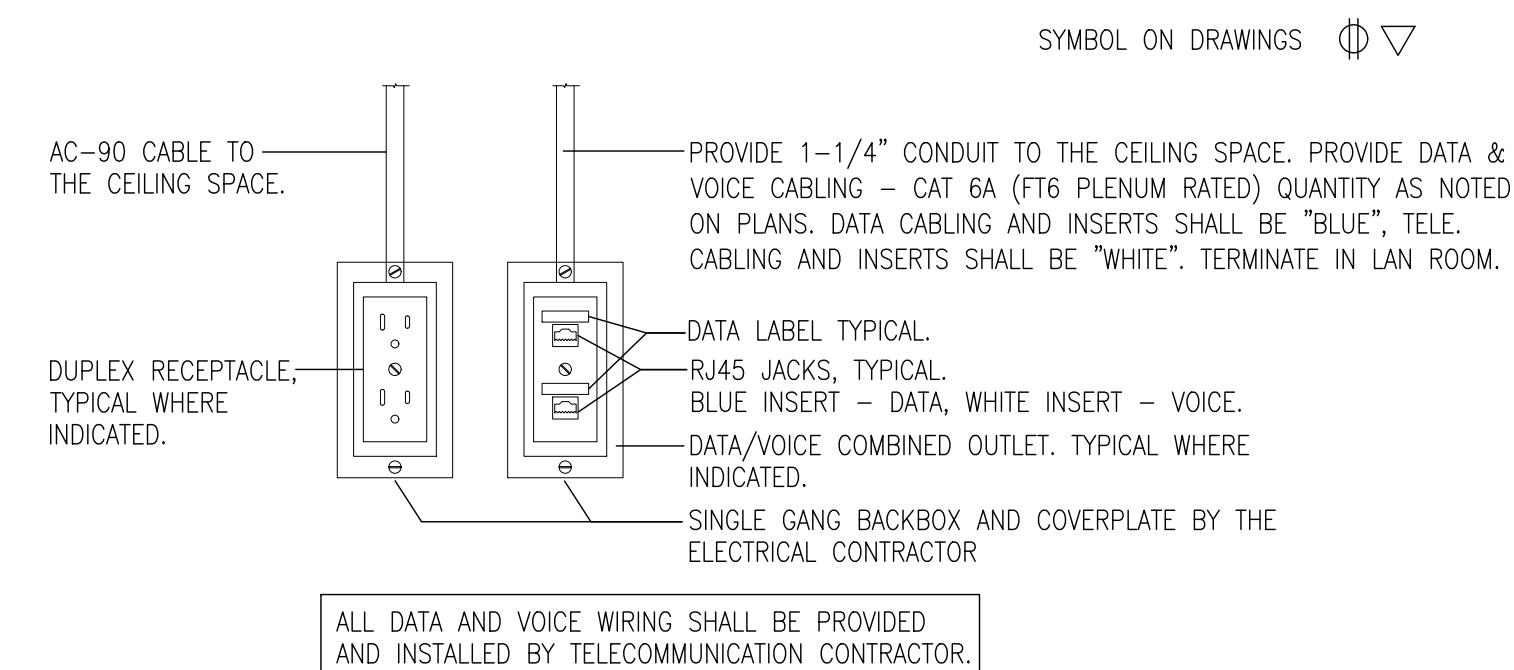
1. ELECTRICAL CONTRACTOR TO SUPPLY AND INSTALL ALL CONDUIT, WIRING, POWER SUPPLIES, AND CONNECTIONS REQUIRED FOR UNIVERSAL WASHROOM.
2. UNLESS OTHERWISE NOTED, ALL CONDUIT SHALL BE MINIMUM 21MM.



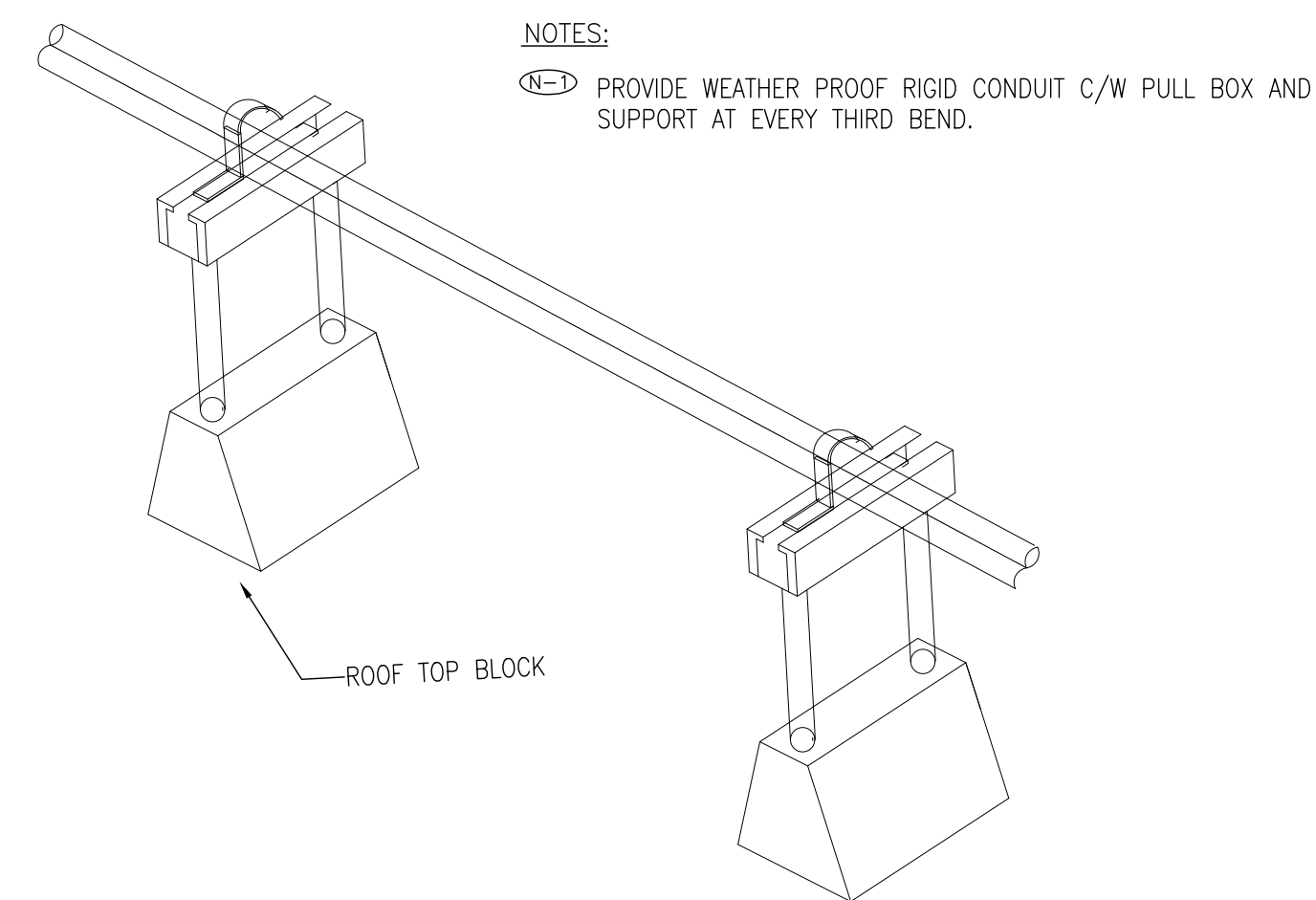
NO	REVISIONS	DATE
4		
3	ISSUED FOR PERMIT/TENDER	2023-04-22
2	ISSUED FOR COORDINATION	2023-11-23
1	ISSUED FOR COORDINATION	2023-04-28

DRAWINGS ARE NOT TO BE SCALED. CONTRACTOR MUST CHECK AND VERIFY ALL DIMENSIONS AND CONDITIONS ON THE PROJECT AND MUST REPORT ANY DISCREPANCIES TO THE ARCHITECT'S BEFORE PROCEEDING WITH THE WORK. THE USE OF THIS DRAWING OR PART THEREOF IS FORBIDDEN WITHOUT THE WRITTEN APPROVAL OF THE ARCHITECTS.

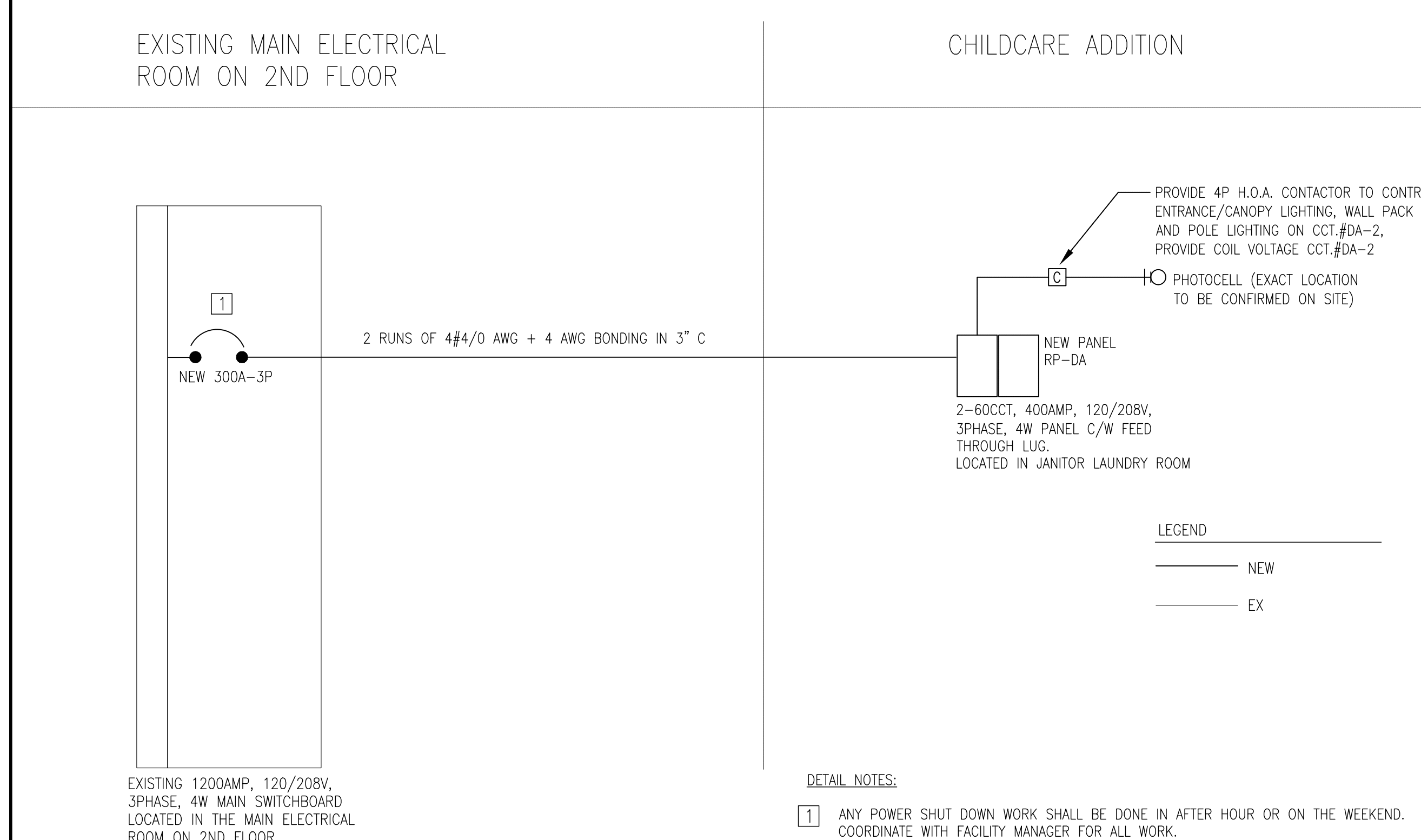
DETAIL #4 - INSTALLATION DETAIL - WALL POWER AND DATA/VOICE COMMUNICATION OUTLET



DETAIL #5 - ROOFTOP CONDUIT



DETAIL #2 - PARTIAL SINGLE LINE DIAGRAM



DETAIL NOTES:

- 1 ANY POWER SHUT DOWN WORK SHALL BE DONE IN AFTER HOUR OR ON THE WEEKEND. COORDINATE WITH FACILITY MANAGER FOR ALL WORK.



BANBURY ELEMENTARY SCHOOL  
CHILD CARE ADDITION  
141 BANBURY ROAD  
BRANTFORD, ON. N3P 1E3

ELECTRICAL DETAILS

GRGURIC ARCHITECTS INCORPORATED



28 KING STREET EAST, UNIT B  
STONEY CREEK, ONTARIO, L8G 1J8  
Tel. 905-664-8735 Fax. 905-664-8737  
Web: www.2gai.com

SCALE: N.T.S.	PROJECT: 2022-08
START DATE: AUGUST 2022	
DRAWN: C.D.	DRAWING: E4.01
CHECKED: D.B.	
PRINT DATE:	

DETAIL #7 - PANEL SCHEDULE - RP-DA

NEW PANEL - RP-DA  
 LOCATION: LAUNDRY ROOM  
 FROM: MAIN SWITCHBOARD  
 MOUNTING: RECESSED

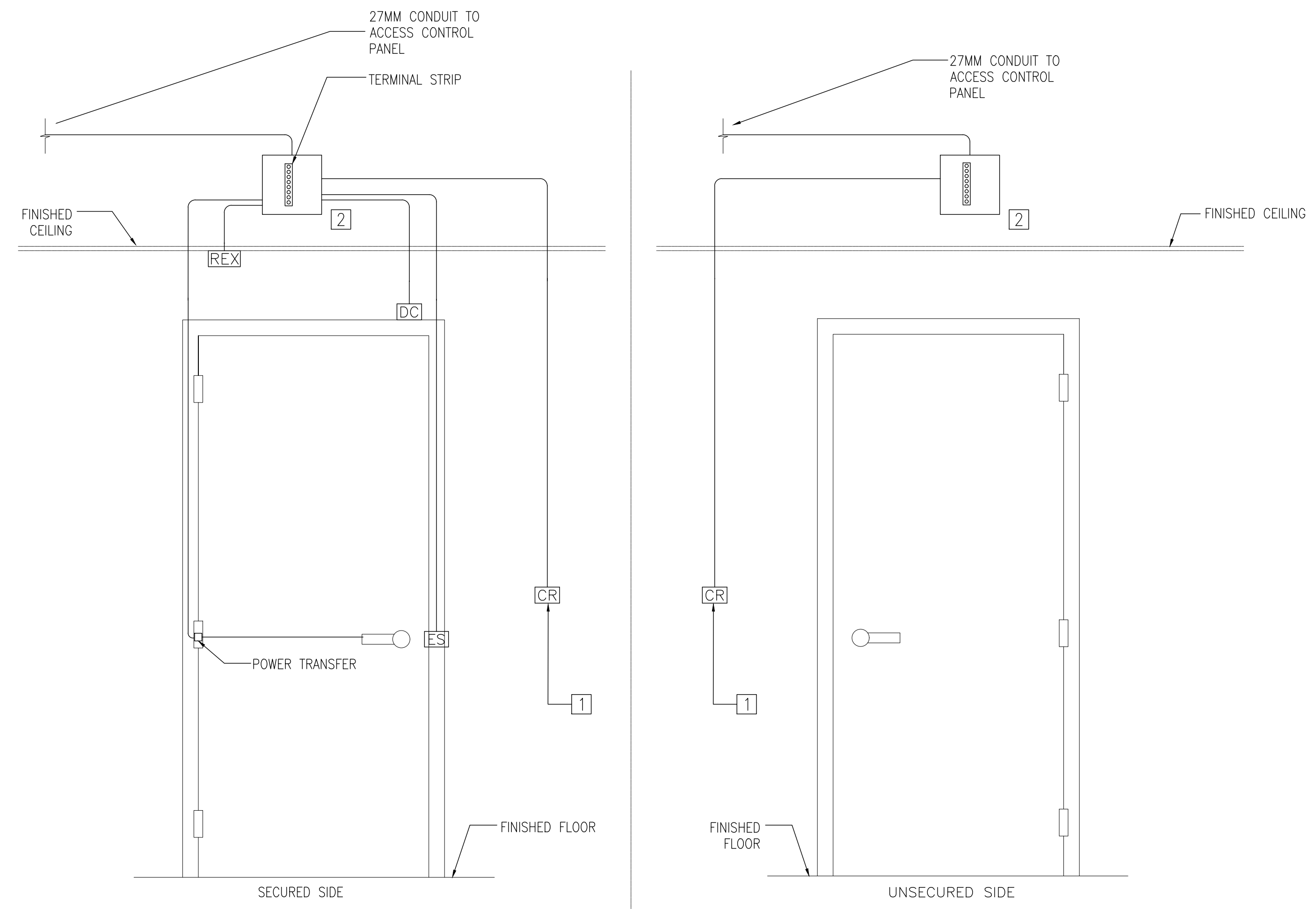
VOLTS: 120/208V  
 PHASES: 3φ 4W  
 WIRES:

A.I.C. RATING:  
 MAIN TYPE:  
 MAINS RATING: 400 A  
 MCB RATING: N/A

DESCRIPTION	LOAD (W)	BKR	CCT		CCT	BKR	LOAD (W)	DESCRIPTION
INTERIOR LIGHTING & BATTERY UNIT	1000	15	1	A	2	15	600	EXTERIOR LIGHTING
INTERIOR LIGHTING	180	15	3	B	4	15	400	EXIT SIGN
INTERIOR LIGHTING	180	15	5	C	6	20	1800	RP-1
INTERIOR LIGHTING	600	15	7	A	8	20	1800	RP-2
INTERIOR LIGHTING	300	15	9	B	10	15		SPARE
INTERIOR LIGHTING	750	15	11	C	12	15	500	FFH-1
INTERIOR LIGHTING	400	15	13	A	14	2P	500	
INTERIOR LIGHTING	500	15	15	B	16	15	500	FFH-2
FRIDGE	500	15	17	C	18	2P	500	
RECEPTACLE	500	15	19	A	20	15	500	FFH-3
RECEPTACLE	500	15	21	B	22	2P	500	
RECEPTACLE	500	15	23	C	24	20	1800	RP-4
FRIDGE	500	15	25	A	26	20	1800	RP-5
FRIDGE	500	15	27	B	28	15	200	EF-3
RECEPTACLE	500	15	29	C	30	15	200	EF-1
RECEPTACLE	500	15	31	A	32	15	200	EF-5
RANGE HOOD FAN	200	15	33	B	34	15	200	EF-4
RECEPTACLE	200	15	35	C	36	15	200	VAV
DISH WASHER	800	15	37	A	38	15	200	VAV
RECEPTACLE	500	20	39	B	40	15	200	VAV
RECEPTACLE	500	20	41	C	42	15	500	EBB-6
STOVE	3000	40	43	A	44	15	500	EBB-1
	3000	2P	45	B	46	15	500	EBB-7
DRYER	2000	30	47	C	48	15	500	EBB-8
	2000	2P	49	A	50	15	1000	EBB-3
WASHER	500	20	51	B	52	2P	1000	
RECEPTACLE	200	15	53	C	54	15	500	EF-6
WATER SOFTNER	200	15	55	A	56	15	1000	EBB-2
RECEPTACLE	200	15	57	B	58	15	500	EBB-5
INTERCOM	500	20	59	C	60	2P	500	
ADO	200	15	61	A	62	15	200	VAV
RECEPTACLE	200	15	63	B	64	15	200	P-1
RTU RECEPTACLE	200	20	65	C	66	20	1800	RP-3
RTU RECEPTACLE	500	20	67	A	68	20	1800	RP-3
HAND DRYER	1000	20	69	B	70	20	1800	RP-3
HAND DRYER	1000	20	71	C	72	15		SPARE
EMERGENCY PULL CORD & ALARM	200	15	73	A	74	60	5000	
RECEPTACLE	500	15	75	B	76		5000	RTU-1
CLOCK RECEPTACLE	200	15	77	C	78	3P	5000	
RECEPTACLE	500	15	79	A	80	60	5000	
DISH WASHER	500	15	81	B	82		5000	RTU-2
MICROWAVE	500	15	83	C	84	3P	5000	
RECEPTACLE	200	15	85	A	86	15	200	FIRE SMOKE DAMPER
FRIDGE	500	15	87	B	88	15	200	FIRE SMOKE DAMPER
RECEPTACLE	200	15	89	C	90	15	200	FIRE SMOKE DAMPER
RECEPTACLE	200	15	91	A	92	15		SPARE
RECEPTACLE	200	15	93	B	94	15		SPARE
FRIDGE	500	15	95	C	96	15		SPARE
RECEPTACLE	200	15	97	A	98	15		SPARE
MICROWAVE	800	15	99	B	100	20		SPARE
	5000		101	C	102	20		SPARE
DWT	5000		103	A	104			
	5000	3P	105	B	106			
			107	C	108			
			109		110			
			111		112			
			113		114			
			115		116			
			117		118			
			119		120			
	45010		TOTAL LOAD :	100510		55500		

NOTES:  
 1. SPRINKLER PROOF

DETAIL #6 - SECURITY DOOR DETAIL



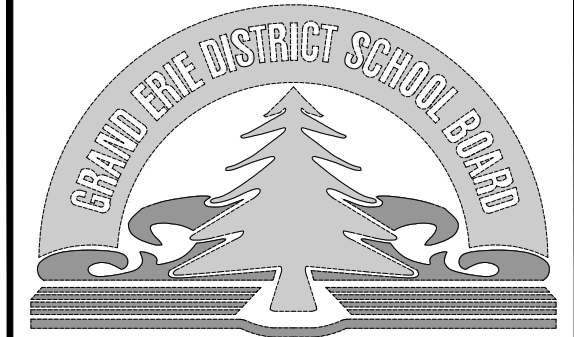
DETAIL NOTES:

- 1 100MM X 50MM BOX FOR DEVICE.
- 2 305MM X 305MM JUNCTION BOX ON SECURED SIDE OF DOOR.

GENERAL NOTES:

- 1. REFER TO FLOOR PLAN, SECURITY DRAWING AND DOOR HARDWARE SCHEDULE FOR ADDITIONAL DETAILS.
- 2. COORDINATE EXACT LOCATIONS OF DEVICES ON SITE WITH SECURITY AND DOOR HARDWARE CONTRACTOR.
- 3. ALL TERMINAL STRIPS SHALL BE PROVIDED AND INSTALLED BY THE SECURITY CONTRACTOR.
- 4. THIS DIAGRAM SHALL BE READ IN CONJUNCTION WITH THE SECURITY DRAWING DOOR AND HARDWARE SCHEDULE.
- 5. ALL WIRING SHALL BE INSTALLED IN CONDUITS. ALL CONDUIT SHALL BE 21mm UNLESS OTHERWISE NOTED.
- 6. ELECTRICAL CONTRACTOR SHALL PROVIDE ALL REQUIRED JUNCTION BOX, BACK BOX AND CONDUIT AS INDICATED AND COORDINATE WITH SECURITY CONTRACTOR ON SITE FOR ALL REQUIREMENT. ELECTRONIC SAFETY AND SECURITY CONTRACTOR SHALL PROVIDE ALL CONTROL WIRING FROM THE ACCESS CONTROL SYSTEM CONTROLLER TO TERMINAL STRIP LOCATED ABOVE DOOR. COORDINATE WITH THE DOOR HARDWARE CONTRACTOR AND CONNECT ALL LOCK WIRING TO RESPECTIVE LOCKS.

SYMBOL ON DRAWINGS: CR DC REX ES



NO.	REVISIONS	DATE
4		
3	ISSUED FOR PERMIT/TENDER	2023-04-22
2	ISSUED FOR COORDINATION	2023-11-23
1	ISSUED FOR COORDINATION	2023-04-28

DRAWINGS ARE NOT TO BE SCALED. CONTRACTOR MUST CHECK AND VERIFY ALL DIMENSIONS AND CONDITIONS ON THE PROJECT AND MUST REPORT ANY DISCREPANCIES TO THE ARCHITECT'S BEFORE PROCEEDING WITH THE WORK. THE USE OF THIS DRAWING OR PART THEREOF IS FORBIDDEN WITHOUT THE WRITTEN APPROVAL OF THE ARCHITECTS.



BANBURY ELEMENTARY SCHOOL  
 CHILDCARE ADDITION  
 141 BANBURY ROAD  
 BRANTFORD, ON. N3P 1E3

ELECTRICAL DETAILS & PANEL SCHEDULE

GRGURIC ARCHITECTS INCORPORATED



28 KING STREET EAST, UNIT B  
 STONEY CREEK, ONTARIO, L8G 1J8  
 Tel. 905-664-8735 Fax. 905-664-8737  
 Web: www.2gai.com

SCALE:	PROJECT:
N.T.S.	2022-08
START DATE:	AUGUST 2022
DRAWN:	DRAWING:
C.D.	E4.02
CHECKED:	
D.B.	
PRINT DATE:	