

ELECTRICAL DEMOLITION NOTES

- 1. THE ELECTRICAL CONTRACTOR SHALL, AS PART OF HIS WORK, PERFORM ALL RELATED DEMOLITION, MODIFICATIONS, RELOCATION OF ELECTRICAL DISTRIBUTION AND OTHER EQUIPMENT AND RELATED WORK, INCLUDING NEW WORK NECESSARY TO COMPLETE THE PROJECT.
2. ALL EXISTING FIELD CONDITIONS MAY NOT BE SHOWN ON THE DRAWINGS. THE ELECTRICAL CONTRACTOR SHALL VERIFY ALL FIELD CONDITIONS AND DIMENSIONS PRIOR TO SUBMITTING BIDS. REFER TO EXISTING DRAWINGS AND VISIT THE SITE TO DETERMINE THE EXTENT OF THE DEMOLITION AND NEW WORK REQUIRED. REQUEST FOR EXTRA WILL NOT BE CONSIDERED FOR FAILURE BY THE CONTRACTOR TO BECOME FAMILIAR WITH THE EXISTING SITE CONDITIONS.
3. THE ELECTRICAL CONTRACTOR SHALL VERIFY ALL TECHNICAL DETAILS OF EQUIPMENT TO BE REMOVED, WHERE THERE IS A DISCREPANCY WITH THE TENDER DOCUMENTS, CONTRACTOR SHALL ENGAGE CONSULTANTS FOR DIRECTIONS, ELECTRICAL CONTRACTOR SHALL MAKE A LIST OF ALL EQUIPMENT TO BE REMOVED. THIS LIST SHALL BE WITH ALL FOLLOWING INFORMATION:
* MAKE/MODEL#
* MANUFACTURER
* TECHNICAL DETAILS
* LOCATION
THIS LIST SHALL BE SUBMITTED TO THE OWNER FOR RECORD PURPOSES.
4. THE ELECTRICAL CONTRACTOR SHALL NOT DISCONNECT EQUIPMENT AND ELECTRICAL CIRCUITS IN THE RENOVATION AREA OR ANY PART OF THE BUILDING WITHOUT PRIOR NOTIFICATION AND PERMISSION FROM THE OWNER. EXTREME CARE SHALL BE TAKEN TO MINIMIZE DISTURBANCE TO THE SURROUNDING AREA.
5. ITEMS REMOVED AND NOT SCHEDULED TO BE RELOCATED SHALL BE OFFERED TO THE OWNER FOR THEIR USE AND IF NOT ACCEPTED BY THE OWNER, THE ELECTRICAL CONTRACTOR SHALL DISPOSE OF THE MATERIAL FROM THE SITE IN ACCORDANCE WITH LOCAL REGULATIONS, THE ELECTRICAL CONTRACTOR SHALL DELIVER ITEMS ACCEPTED BY THE OWNER TO THE DESIGNATED LOCATIONS AS DIRECTED BY THE OWNER.
6. IN ALL CASES WHERE WORK IS REMOVED, THE ELECTRICAL CONTRACTOR SHALL PROVIDE ALL NECESSARY MATERIALS, EQUIPMENT AND LABOR TO SUSTAIN OPERATION OF ALL PARTS OF THE SYSTEMS CONNECTING TO OR FROM THE PART REMOVED, COMPLETING ALL WORK IN STRICT ACCORDANCE WITH APPLICABLE CODES.
7. ALL WIRING, CABLES AND FEEDERS INCLUDING BOTH CONNECTED TO DEVICES AND EQUIPMENT TO BE DEMOLISHED AND EXISTING THAT WERE ABANDONED IN PLACE SHALL BE REMOVED BACK TO THEIR SOURCES, UNLESS NOTED OTHERWISE, CONDUITS AND/OR WIRING SHALL, WHERE NECESSARY, BE RE-CIRCUIT AROUND THE REMOVED PART, KEEPING OCCUPIED PARTS OF THE BUILDING SYSTEM IN FULL SERVICE.
8. ALL EXISTING CONDUITS WHICH HAVE BEEN ABANDONED OR ARE UNUSED SHALL BE REMOVED.
9. PROVIDE BLANK METAL COVER PLATES FOR ALL JUNCTION/DEVICE BOXES NO LONGER IN USE THAT ARE EMBEDDED IN FLOOR SLAB OR MASONRY WALLS. PROVIDE PULLS FOR ALL PANELS WHERE CONDUIT HAS BEEN REMOVED. COVER PLATES SHALL BE PAINTED TO MATCH EXISTING CONDITIONS.
10. WHERE REQUIRED COORDINATE WITH THE CONSULTANTS/OWNER FOR EXISTING PARTITIONS TO BE REMOVED TO FACILITATE WORK. DISCONNECT EXISTING BRANCH CIRCUITS SERVICING DEVICES IN PARTITIONS TO BE REMOVED. MAINTAIN CONTINUITY OF CIRCUITS SERVICING EXISTING DEVICES IN OTHER AREAS TO REMAIN.
11. LIGHTING FIXTURES, REMOVE LIGHTING FIXTURES AND SWITCH CONTROL WHEN THE FIXTURE TO BE REMOVED IS SERVED BY A CIRCUIT, THAT SUPPLIES FIXTURES IN OTHER AREAS THAT ARE TO REMAIN, THE ELECTRICAL CONTRACTOR SHALL MAINTAIN THE CONTINUITY OF THE CIRCUIT TO THE REMAINING FIXTURES.
12. POWER RECEPTACLES: REMOVE RECEPTACLES, WHEN THE RECEPTACLE TO BE REMOVED IS SERVED BY A CIRCUIT THAT SUPPLIES RECEPTACLES IN OTHER AREAS, THAT ARE TO REMAIN, THE ELECTRICAL CONTRACTOR SHALL MAINTAIN THE CONTINUITY OF THE CIRCUIT TO THE REMAINING RECEPTACLES.
13. FIRE ALARM SYSTEM: COORDINATE AND CONSULT WITH CURRENT F/A SYSTEM SERVICE CONTRACTOR OR THEIR QUALIFIED REPRESENTATIVE FOR ALL FIRE ALARM DEMOLITION AND MODIFICATIONS. OPERATION SHALL BE MAINTAINED OF EXISTING FIRE ALARM SYSTEM SPECIFICALLY AS IT RELATES TO ADJACENT AREAS WHICH ARE NOT INCLUDED IN THE SCOPE OF THIS PROJECT.
14. ELECTRICAL CONTRACTOR SHALL PROVIDE UPDATED TYPE WRITTEN PANEL DIRECTORIES FOR ALL PANELS AFFECTED BY THE DEMOLITION AND/OR NEW WORK. CIRCUIT BREAKERS NOT USED FOR NEW WORK SHALL BE LABELED AS SPARE.
15. FOR EXISTING DEVICES/CIRCUITRY THAT ARE INDICATED TO BE REMOVED BACK TO POINT OF ORIGIN- THESE ITEMS ARE TO BE REMOVED BACK TO POINT OF ORIGIN UNLESS THERE WILL BE EXISTING DEVICES ON THE SAME CIRCUIT THAT ARE LOCATED OUTSIDE AREA OF WORK THAT ARE TO REMAIN. IN THAT CASE, REMOVE THE EXISTING DEVICES/CIRCUITRY IN AREA OF WORK BACK TO THESE EXISTING DEVICES TO REMAIN. ALL DEVICES/CIRCUITRY IN SURROUNDING AREAS THAT ARE TO REMAIN ARE TO BE KEPT ENERGIZED. FOR REMOVAL OF CONDUIT AND WIRING OUTSIDE OF AREA OF WORK COORDINATE AND SCHEDULE WITH OWNER PRIOR TO PERFORMING WORK.

Table with 2 columns: Symbol and Description. Includes sections for POWER & DISTRIBUTION SYSTEMS, RECEPTACLE/DIRECT CONNECTIONS, and notes.

Table with 2 columns: Symbol and Description. Includes sections for PAGING AND SOUND SYSTEM and NOTES.

Table with 2 columns: Symbol and Description. Includes sections for FIRE ALARM SYSTEM, AUDIO VISUAL SYSTEM, and COMMUNICATION SYSTEMS.

Table with 2 columns: Symbol and Description. Includes sections for CLOCK SYSTEM and MILLWORK/MODULAR CONTROL PANEL.

Table with 2 columns: Symbol and Description. Includes sections for SECURITY SYSTEM, MECHANICAL WIRING SYSTEMS, and TYPICAL CIRCUIT NUMBER IDENTIFICATION.

Table with 2 columns: Symbol and Description. Includes sections for SECURITY SYSTEM, MECHANICAL WIRING SYSTEMS, and TYPICAL CIRCUIT NUMBER IDENTIFICATION.

Table with 2 columns: Symbol and Description. Includes sections for SECURITY SYSTEM, MECHANICAL WIRING SYSTEMS, and TYPICAL CIRCUIT NUMBER IDENTIFICATION.

Table with 2 columns: Abbreviation and Description. Includes sections for MISCELLANEOUS ABBREVIATIONS/SUBSCRIPTS/SYMBOLS and SUBSCRIPTS.

DRAWING LIST

Table with 2 columns: DWG No. and DRAWING TITLE. Lists drawing numbers and titles such as E000 ELECTRICAL SYSTEMS LEGEND DEMO NOTES AND DRAWING LIST.

Client: Halton District School Board, 2050 Guelph Line, Burlington, Ontario

T.A. BLAKELOCK H.S. RENOVATION

1160 Rebecca Street, Oakville, ON L6L 1Y9

Architect logo for Snyder Architects Inc. with address and contact information.

Consultants: Structural Engineers: Kalos Engineering Inc. Mechanical and Electrical Consultants: EXP

Key Plan N.T.S.



Table with 3 columns: No., Revisions, Date. Lists revision history for the drawing.

General Contractor shall check and verify all dimensions and report all errors and omissions to the Architect. Do not scale the drawings.

ELECTRICAL SYSTEMS LEGEND DEMO NOTES AND DRAWING LIST

Scale: - Date: 05/01/2023

Drawn by: T.T. Checked by: J.P.

Job No. 2215B Drawing No. E000

LIGHTING FIXTURE SCHEDULE	
TYPE	DESCRIPTION
A	<ul style="list-style-type: none"> 610mm X 1220mm RECESSED LED VOLUMETRIC LUMINAIRE 120V, 5073LM, 4000K, 80+CRI, 35W 0-10V DIMMING DRIVER SMOOTH FROSTED ACRYLIC LENS WHITE FINISH FOR ACT OR DRYWALL CEILING INSTALLATION. REFER TO ARCHITECTURAL REFLECTED CEILING PLANS METALUX CRUZE SERIES
A-EB	<ul style="list-style-type: none"> SAME AS TYPE 'A', EXCEPT COMPLETE WITH 10 WATT EMERGENCY BATTERY PACK WITH INTEGRAL TEST SWITCH.
B	<ul style="list-style-type: none"> 305mm X 1220mm RECESSED LED VOLUMETRIC LUMINAIRE 120V, 3900LM, 4000K, 80+CRI, 26.5W 0-10V DIMMING DRIVER SMOOTH FROSTED ACRYLIC LENS WHITE FINISH FOR ACT CEILING INSTALLATION METALUX CRUZE SERIES
B-EB	<ul style="list-style-type: none"> SAME AS TYPE 'B', EXCEPT COMPLETE WITH 7 WATT EMERGENCY BATTERY PACK WITH INTEGRAL TEST SWITCH.
C	<ul style="list-style-type: none"> 256mm W x 1220mm L x 86mm D, SURFACE LED WRAP LUMINAIRE 120V, S378LM, 4000K, 80 CRI, 38.2W 0-10V DIMMING DRIVER SMOOTH FROSTED RIBBED POLYCARBONATE LENS WHITE FINISH METALUX ACHIEVA, WRAP SELECTABLE SERIES
C-EB	<ul style="list-style-type: none"> SAME AS TYPE 'C', EXCEPT COMPLETE WITH 7 WATT EMERGENCY BATTERY PACK WITH INTEGRAL TEST SWITCH.
LP24	<ul style="list-style-type: none"> 2440mm LONG DIRECT/INDIRECT LINEAR LED PENDANT 120V, 5000LM, 4000K, 80CRI OPTICS: FROSTED LENS - 25%UP, 75%DOWN 0-10V DIMMING DRIVER WHITE FINISH AIRCRAFT SUSPENSION CABLES WITH UNDERSIDE OF FIXTURE AT 3000mm ABOVE FINISH FLOOR. CONFIRM EXACT SUSPENSION CABLES LENGTH ON SITE PRIOR TO ORDERING. COOPER LIGHTING, CORELITE CTA-LED SERIES
LP24-EB	<ul style="list-style-type: none"> SAME AS TYPE 'LP24', EXCEPT COMPLETE WITH 10 WATT EMERGENCY BATTERY PACK WITH INTEGRAL TEST SWITCH.
LP12	SAME AS TYPE 'LP24', EXCEPT 1220mm LONG.

FIXTURE SCHEDULE NOTES	
GENERAL	<p>A. APPROVED EQUAL PRODUCTS MUST BE CAPABLE OF PROVIDING THE SAME LEVEL OF PERFORMANCE, INCLUDING CONTROL CAPABILITY, AS THE NAMED DESIGN PRODUCT. PRODUCTS OTHER THAN THOSE LISTED WILL BE CONSIDERED. SUBMIT PRODUCT DATA IN ACCORDANCE WITH THE LIGHTING SECTION OF THE ELECTRICAL SPECIFICATION DOCUMENTS.</p> <p>B. COLOR QUALITY: INTERIOR LIGHTING SHALL HAVE AN R9 VALUE OF 50 OR BETTER.</p> <p>C. IT IS THE RESPONSIBILITY OF THE CONTRACTOR TO ENSURE THAT THE PRODUCTS SUPPLIED AND INSTALLED ARE COMPATIBLE WITH THE LIGHTING CONTROL SYSTEM AND/OR DEVICES. THE CONTRACTOR SHALL PROVIDE THE CONTROLS SYSTEM MANUFACTURER A COPY OF ALL DRAWINGS AND SCHEDULES.</p> <p>D. PACKAGES FROM THE FOLLOWING AGENCIES WILL BE CONSIDERED: - MEDGAR LCI (905) 312-1213 - RUTENBERG SALES (905) 848-2255 - SALEX (416) 293-2295 - WSC LIGHTING SYSTEMS (519) 652-9060</p>
PRODUCTS	<p>1. FINISH COLOR SHALL BE SELECTED BY ARCHITECT DURING SHOP DRAWING REVIEW.</p> <p>2. PROVIDE TOTAL RUN LENGTHS AS SHOWN ON DRAWINGS IN LINEAR FEET (LF).</p> <p>3. INTEGRAL BATTERY SHALL COMPLY WITH ALL APPLICABLE UL, CSA AND NATIONAL CODES AND THE RATED LIFE SHALL MATCH OR EXCEED THE RATED LIFE OF THE LED DRIVER. FIXTURE SHALL BE SUPPLIED AND INSTALLED COMPLETE WITH A CHARGE INDICATOR LIGHT AND TEST SWITCH. TEST SWITCH MAY BE EITHER INTEGRAL BUTTON TYPE OR REMOTE CONTROL. IF REMOTE CONTROL, ONE CONTROLLER SHALL BE PERMANENTLY MOUNTED IN EACH SPACE WHERE THE FIXTURE IS INSTALLED.</p> <p>4. REMOTE POWER SUPPLIES SHALL BE SUPPLIED AND INSTALLED IN ACCORDANCE WITH THE CORRESPONDING FIXTURE MANUFACTURERS RECOMMENDATIONS.</p>
LIGHTING CONTROL NOTES	
1.	WHEN ONLY CEILING MOUNTED OCCUPANCY SENSORS ARE INDICATED, THE CONTROL SCHEME SHALL BE AUTOMATIC "ON/OFF" OF ALL LIGHTING FIXTURE WITHIN THE ROOM VIA THE SENSORS. SENSOR "OFF" DELAY SHALL BE SET A FIFTEEN (15) MINUTES.
2.	WHEN ONLY COMBINATION WALL SWITCHDIMMER AND VACANCY SENSORS ARE INDICATED, THE CONTROL SCHEME SHALL BE MANUAL "ON/OFF" AND AUTOMATIC "OFF" OF ALL LIGHTING FIXTURE WITHIN THE ROOM VIA THE VACANCY SENSOR. SENSORS "OFF" DELAY SHALL BE SET A FIFTEEN (15) MINUTES.
3.	WHEN WALL SWITCHDIMMERS AND CEILING MOUNTED OCCUPANCY SENSORS ARE INDICATED, THE CONTROL SCHEME SHALL BE MANUAL "ON/OFF" AND AUTOMATIC "OFF" OF ALL LIGHTING FIXTURES WITHIN THE ROOM CONNECTED TO THE SAME LIGHTING ZONE(S) AS THE OCCUPANCY SENSORS. SENSORS "OFF" DELAY SHALL BE SET AT FIFTEEN (15) MINUTES.

GENERAL NOTES	
1.	ALL INFORMATION PROVIDED ON THIS SHEET MAY NOT BE IMPLEMENTED INTO THE PROJECT.
2.	REFER TO FIXTURE SPECIFICATIONS FOR COMPLETE FIXTURE INFORMATION.
3.	REFER TO FIXTURE MOUNTING DETAIL SHEETS FOR SPECIFIC MOUNTING CONDITIONS.
4.	CONTRACTOR TO PROVIDE POWER SUPPLIES AND/OR DRIVERS FOR ALL FIXTURES SPECIFIED WITH REMOTE CONTROL GEAR. ALL REMOTE MOUNTED CONTROL GEAR SHALL BE MOUNTED OUT OF VIEW OF GUESTS.
5.	CONTRACTOR TO CONFIRM ALL REMOTE CONTROL GEAR LOCATIONS WITH LANDSCAPE OR FACILITY ARCHITECT.
6.	CONTRACTOR TO VERIFY EXACT MOUNTING LOCATION OF ALL ACCENT LIGHTS IN FIELD WITH LIGHTING DESIGNER.
7.	UNLESS OTHERWISE INDICATED, ALL MOUNTING BOXES FOR LIGHTING FIXTURES MOUNTED TO FACADES TO BE RECESSED INTO STRUCTURE. COORDINATE JBOX LOCATION WITH OTHER TRADES.
8.	INFORM CONSTRUCTION MANAGER IN WRITING IN A TIMELY WAY OF ANY DISCREPANCIES DISCOVERED.
9.	CONTRACTOR TO VERIFY CONDITIONS ON WHICH THIS WORK DEPENDS IN OTHER ISSUED CONSTRUCTION DRAWINGS AND ON SITE SUCH AS BUT NOT LIMITED TO: - DIMENSIONS - LEVELS - MATERIALS - DETAILS - AVAILABILITY OF REQUIRED UTILITIES

ABBREVIATIONS	
ABV	ABOVE
AFB	ABOVE FINISH FLOOR
AFG	ABOVE FINISH GRADE
ADJ	ADJUSTABLE
ARCH	ARCHITECTURAL
BLDG	BUILDING
BY	BY OTHERS
BOT	BOTTOM
BEL	BELOW
CLG	CEILING
CONSTR	CONSTRUCTION
CONTR	CONTRACTOR
CONT	CONTINUOUS
E	EAST
EL	ELEVATION
ELEC	ELECTRICAL
EQ	EQUAL
EXT	EXTERIOR
FL	FLOOR
FLUOR	FLUORESCENT
FT	FOOT OR FEET
GC	GENERAL CONTRACTOR
GND	GROUND
GR	GRADE
HGT	HEIGHT
HORIZ	HORIZONTAL
ID	INSIDE DIAMETER
IN	INCH
INFO	INFORMATION
INT	INTERIOR
L	LENGTH
LT	LIGHT
MFG	MANUFACTURER
N	NORTH
NL	"NIGHT LIGHT" (I.E. UNSWITCHED)
NO	NUMBER
NOM	NOMINAL
NTS	NOT TO SCALE
OC	ON CENTER
OD	OUTSIDE DIAMETER
OFOI	OWNER FURNISHED OWNER INSTALLED
OPP	OPPOSITE
OVHD	OVERHEAD
REV	REVISION
RCP	REFLECTED CEILING PLAN
S	SOUTH
SCHED	SCHEDULE
SECT	SECTION
SHT	SHEET
SM	SIMILAR
SPEC	SPECIFICATION
STD	NORMAL
STR	STRUCTURE
TYP	TYPICAL
UN	UNLESS OTHERWISE NOTED
W	WEST, WIDTH, OR WOOD
WI	WITH
W/O	WITHOUT
WP	WATERPROOF
XFMR	TRANSFORMER
*	SAME AS ABOVE
-	NOT REQUIRED / NOT APPLICABLE

LUMINAIRE ABBREVIATION	
A	ACCENT / AIMABLE
B	BOLLARD / PATH / STEP
C	CHARACTER
D	DOWNLIGHT
E	EFFECT / EXISTING
F	FLOODLIGHT / SPOTLIGHT
G	INGRADE
H	HAZARDOUS / HERITAGE / HIGHBAY
I	INDIRECT
J	JUNCTION BOX
K	CLEAN / GASKETED
L	LINEAR
M	MULTILAMP / MILLWORK
N	NICHE OR COVE
O	(NOT USED)
P	POLE / PARKING
Q	(NOT USED)
R	TROFFER
S	SURFACE/STRIPLIGHT
T	TRACK
U	UNDERWATER
V	VANDAL
W	WORKLIGHT / WALLPACK
X	EXIT / EMERGENCY
Y	REMOTE EMERGENCY HEAD [USED IN ZONING]
Z	

CHARACTER ABBREVIATION	
B	BOLLARD OR SHORT PEDESTAL BASE
C	CLOSE CEILING
F	FAN
G	GAS FLAME FOR LUMINAIRE
L	LAMPPOST
M	MULTILAMP OR FESTOON LIGHTS
P	PENDANT
R	RECEPTACLE FOR LUMINAIRE PLUG
S	SURFACE
T	TABLE LAMP
W	WALL MOUNTED

LIGHTING LEGEND	
CONTROLS	<p>DS DAYLIGHT SENSOR.</p> <p>PC PHOTOCELL (OUTDOOR DAYLIGHT SENSOR).</p> <p>HC CEILING MOUNTED OCCUPANCY SENSOR. SUBSCRIPTS: H = SUITABLE FOR HIGH HUMIDITY AREA B = HIGH BAY TYPE.</p> <p>WC WALL/CORNER MOUNTED OCCUPANCY SENSOR.</p> <p>LS LINE VOLTAGE SWITCH. SUBSCRIPTS: 3 = 3-WAY, 4 = 4-WAY, D = DIMMING, P = PILOT LIGHT, M=MOTION SENSOR, T = TIME SWITCH.</p> <p>abc MULTIPLE SWITCHES UNDER COMMON PLATE. LETTER DESIGNATES SWITCH/LEG.</p> <p>SW SWITCHING TYPE WALL STATION</p> <p>DM DIMMING TYPE WALL STATION</p> <p>PTN PARTITION SENSORS</p>
JUNCTION BOX / REMOTE POWER SUPPLY / CONTROL DEVICE	<p>SR SURFACE/RECESSED MOUNTED.</p> <p>WM WALL MOUNTED.</p> <p>ST SUBSCRIPT DENOTES TYPE. REFER TO LIGHTING FIXTURE SCHEDULE.</p>
FIXTURES	SEE LIGHTING FIXTURE SCHEDULE FOR SPECIFIC PRODUCT REQUIREMENTS. LIGHTING FIXTURE CUT SHEETS HAVE ALSO BEEN PROVIDED FOR REFERENCE. SHADED SYMBOLS DENOTE LIGHT FIXTURES CONNECTED TO ESSENTIAL POWER.
ACCENT	<p>SM SURFACE MOUNTED</p> <p>WM WALL MOUNTED</p> <p>TRP TRACK/STRUT/PIPE MOUNTED</p> <p>PIG PLUG-IN SURFACE MOUNTED</p>
DOWNLIGHT	<p>RR ROUND RECESSED MOUNTED</p> <p>WRP ROUND SURFACE MOUNTED</p> <p>SR SQUARE RECESSED MOUNTED</p> <p>SRP SQUARE SURFACE MOUNTED</p> <p>RA ROUND ADJUSTABLE RECESSED MOUNTED</p> <p>SA SQUARE ADJUSTABLE RECESSED MOUNTED</p>
CHARACTER	<p>SM SURFACE MOUNTED</p> <p>PM PENDANT MOUNTED</p> <p>WM WALL MOUNTED</p> <p>BM BASE MOUNTED</p> <p>BM1 BASE MOUNTED ONE HEAD</p> <p>BM2 BASE MOUNTED TWO HEAD</p>
EMERGENCY / GENERIC	<p>BTU1 EMERGENCY BATTERY UNIT. SYMBOL IS GENERIC. REFER TO SPECIFICATIONS FOR TYPES.</p> <p>WM WALL MOUNT LUMINAIRE OR REMOTE EMERGENCY HEAD</p> <p>RCM RECESSED CEILING MOUNT LUMINAIRE OR REMOTE EMERGENCY HEAD</p>
IN-GRADE	<p>IG IN-GRADE</p> <p>IGD IN-GRADE DIRECTIONAL</p>
POLE / PATH	<p>B BOLLARD</p> <p>SS STEPLIGHT SURFACE MOUNTED</p> <p>SSR STEPLIGHT RECESSED MOUNTED</p> <p>P SINGLE HEAD</p> <p>P2 DOUBLE HEAD</p>
FAN	<p>SM SURFACE MOUNTED</p> <p>PM PENDANT MOUNTED</p> <p>WM WALL MOUNTED</p> <p>CM CEILING MOUNTED LIGHT</p>
NICHE	<p>LED</p> <p>FIBER OPTIC</p> <p>MULTILAMP STRING</p>
ARCHITECTURAL LINEAR / STRIP	<p>CEILING / UNDERCABINET</p> <p>SUSPENDED INDIRECT/DIRECT</p> <p>WALL</p>
THEATRICAL	<p>LEKO</p> <p>FOLLOW SPOT</p> <p>MIRROR</p> <p>PAR</p> <p>FRESNEL</p> <p>BEAM PROJECTOR</p> <p>SCOOP</p> <p>MOVING YOKE SPOT</p> <p>MOVING YOKE WASH</p>
SPECIALTY	<p>SM SURFACE MOUNTED</p> <p>WM WALL MOUNTED</p> <p>TRP TRACK/STRUT/PIPE MOUNTED</p> <p>PIG PLUG-IN SURFACE MOUNTED</p> <p>MP MOVING PENDANT MOUNTED</p> <p>UN UNDERWATER NICHE</p> <p>US UNDERWATER SURFACE MOUNTED</p> <p>FO FIBER OPTIC GENERAL MOUNTED</p> <p>FOE FIBER OPTIC ENDPOINT</p>
EXIT SIGNS	<p>ARROWS INDICATE DIRECTION</p> <p>CEILING MOUNT, SINGLE FACE</p> <p>CEILING MOUNT, DOUBLE FACE</p> <p>WALL MOUNT, SINGLE FACE</p> <p>WALL MOUNT, DOUBLE FACE</p> <p>END WALL MOUNT, DOUBLE FACE</p>
TAGS	<p>MH-0000 LIGHTING FIXTURE MOUNTING HEIGHT TAG DENOTES MOUNTING HEIGHT FROM FINISHED FLOOR TO UNDERSIDE OF FIXTURE. FIXTURE MOUNTING HEIGHTS TO BE DETERMINED ON SITE ARE DENOTED "DS".</p> <p>10 FIXTURE TYPE INDICATOR (SEE FIXTURE SCHEDULE) VARIATION PRODUCT TYPE CATEGORY</p> <p>Z1 CONTROL ZONE TAG ZONE No. 1</p>

Client
Halton District School Board
 2050 Guelph Line
 Burlington, Ontario

T.A. BLAKELOCK H.S. RENOVATION

1160 Rebecca Street, Oakville, ON L6L 1Y9

Architect
sn/der
 Snyder Architects Inc.
 100 Broadview Ave. Suite 207, Toronto, ON, M4M 3H3
 Tel: 416.966.5444 Fax: 416.966.4443
 www.snyderarchitects.ca

Consultants

Structural Consultants
Kalos Engineering Inc.
 875 Main St. W. Unit 3
 Hamilton, Ontario L8S 4P9
 Tel: 905-333-9119

Mechanical and Electrical Consultants
EXP
 1266 S. Service Rd.
 Stoney Creek, Ontario, L8E 5R9
 Tel: 905-525-6069

Key Plan N.T.S.

Project North True North

No.	Revisions	Date
5	ISSUED FOR CONSTRUCTION	2024.05.23
4	RE-ISSUED FOR PERMIT	2024.04.18
3	ISSUED FOR BIDS	2024.04.09
2	ISSUED FOR BUILDING PERMIT	2024.03.21
1	ISSUED FOR PROGRESS	2024.02.15
No.	Issue	Date

General Contractor shall check and verify all dimensions and report all errors and omissions to the Architect. Do not scale the drawings. Drawings shall not be used for construction purposes until issued by the Architect for construction.

Drawing Title:
LIGHTING LEGEND AND FIXTURES SCHEDULE

Scale: - Date: 05/01/2023

Drawn by: T.T. Checked by: J.P.

Job No. Drawing No.

2215B E001

GENERAL NOTES

- COORDINATE ALL REQUIRED POWER SHUT-DOWNS WITH THE SCHOOL BOARD. PROVIDE A ONE (1) WEEK NOTICE PRIOR TO ANY SHUT-DOWN AND PERFORM ALL REQUIRED WORK OUTSIDE OF REGULAR SCHOOL HOURS OF OPERATION AND OR ON WEEKENDS AND AT PREMIUM TIME.

DRAWING NOTES

- EXISTING FIRE ALARM SYSTEM CONTROL PANEL EST MODEL 3X-SFS1. REFER TO SPECIFICATION SECTION 28 31 00 AND DRAWINGS.
- EXISTING IT ROOM COMPLETE WITH EXISTING RACK AND EQUIPMENT. RUN ALL NEW STRUCTURE CABLES TO THIS CLOSET AND CONNECT TO EXISTING PATCH PANELS OR PROVIDE NEW PATCH PANELS AS REQUIRED AND MOUNT ONTO EXISTING RACK TO ACCOMMODATE ALL NEW ADDED CABLES. CONFIRM EXACT EXISTING CONDITIONS ON SITE. REFER TO SPECIFICATION SECTION 27 10 00.
- EXISTING ITE NLAB42L, 225A MAINS, 120/208V/3Ø-4W ELECTRICAL PANEL "L.P.8B" TO REMAIN. ADD TWO (2) 20A-1P BREAKERS IN AVAILABLE SPACES AND WIRE EACH TO NEW SERVICE RECEPTACLES ADJACENT CONDENSING UNITS CU-1 AND CU-2. AS REFER TO DRAWING E301. UPDATE EXISTING CIRCUIT DIRECTORY TO REFLECT NEW RECEPTACLES.
- EXISTING ITE, TYPE VB-6 DISTRIBUTION PANEL DP-E. ADD ONE (1) NEW 80A-3P BREAKER IN AVAILABLE SPACES AND WIRE TO NEW ROOF MOUNTED CONDENSING UNIT CU-1. REFER TO DRAWING E300 FOR CU-1 LOCATION.
- EXISTING ITE, TYPE VB-6 DISTRIBUTION PANEL DP-F. ADD ONE (1) NEW 35A-2P BREAKER IN AVAILABLE SPACES AND WIRE TO NEW ROOF MOUNTED CONDENSING UNIT CU-2. REFER TO DRAWING E300 FOR CU-1 LOCATION.

Client
Halton District School Board
2050 Guelph Line
Burlington, Ontario

**T.A. BLAKELOCK H.S.
RENOVATION**

1160 Rebecca Street, Oakville, ON
L6L 1Y9

Architect

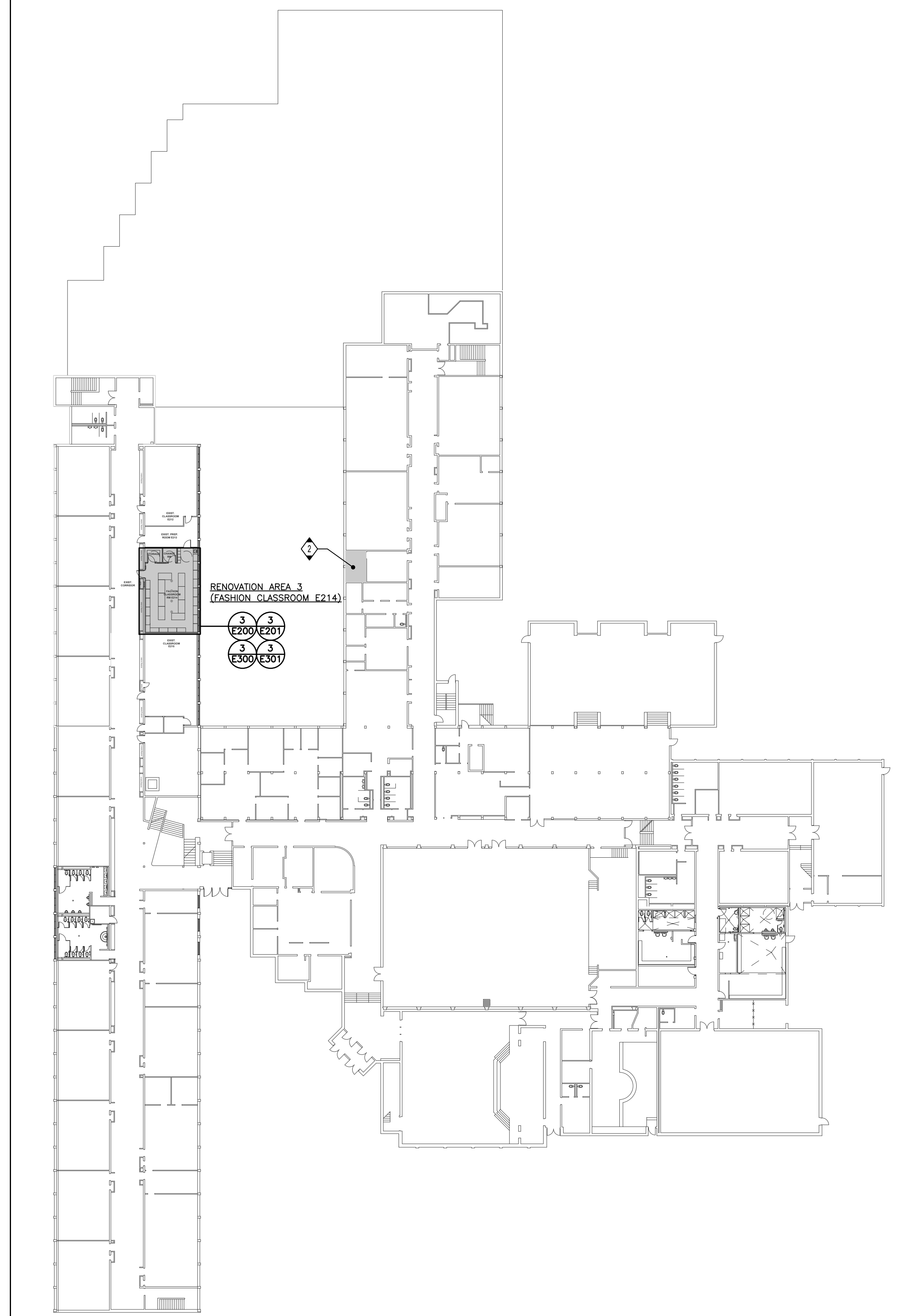
sn/der

Snyder Architects Inc.
100 Broadview Ave, Suite 201, Toronto, ON, M4M 3H3
tel: 416.966.5444 fax: 416.966.4443
www.snyderarchitects.ca

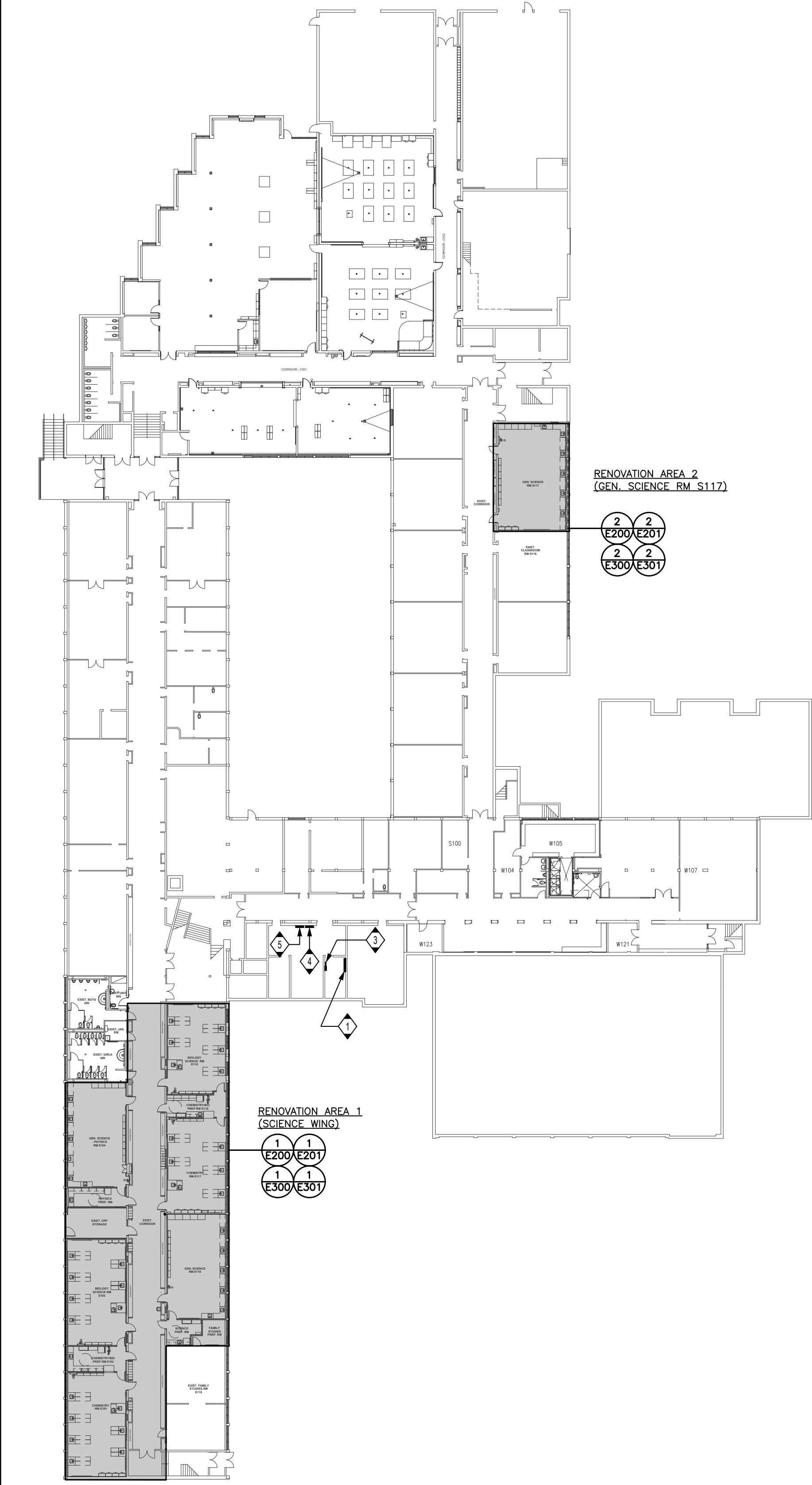
Consultants

Structural Consultants
Kalos Engineering Inc.
875 Main St, W, Unit 3
Hamilton, Ontario, L8S 4P9
Tel: 905-333-0119

Mechanical and Electrical Consultants
EXP
1266 S. Service Rd,
Stoney Creek, Ontario, L8E 5R9
Tel: 905-525-6069

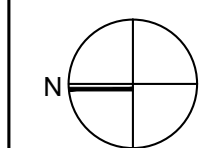


2 LEVEL 1 KEY PLAN
E100 1:400

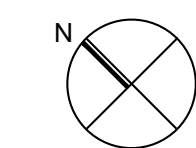


1 LEVEL 0 KEY PLAN
E100 1:400

Key Plan N.T.S.



Project North



True North

No.	Revisions	Date
5	ISSUED FOR CONSTRUCTION	2024.05.23
4	RE-ISSUED FOR PERMIT	2024.04.18
3	ISSUED FOR BIDS	2024.04.09
2	ISSUED FOR BUILDING PERMIT	2024.03.21
1	ISSUED FOR PROGRESS	2024.02.15
No.	Issue	Date

General Contractor shall check and verify all dimensions and report all errors and omissions to the Architect. Do not scale the drawings. Drawings shall not be used for construction purposes until issued by the Architect for construction.

Drawing Title:
**LEVELS 0 AND 1
KEY PLANS**

Scale:	AS NOTED	Date:	05/01/2023
Drawn by:	T.T.	Checked by:	J.P.
Job No.	2215B	Drawing No.	E100

**T.A. BLAKELOCK H.S.
RENOVATION**

1160 Rebecca Street, Oakville, ON
L6L 1Y9

Architect

sn/der

Snyder Architects Inc.
100 Broadview Ave. Suite 207, Toronto, ON, M4M 3H3
Tel: 416.966.5444 Fax: 416.966.4443
www.snyderarchitects.ca

Consultants

Structural Consultants

Kalos Engineering Inc.
875 Main St. W. Unit 3
Hamilton, Ontario L8S 4P9
Tel: 905-333-9119

Mechanical and Electrical Consultants

EXP
1266 S. Service Rd.
Stoney Creek, Ontario, L8E 5R9
Tel: 905-525-6069

Key Plan N.T.S.



Project North True North

No.	Revisions	Date
7	ISSUED FOR CONSTRUCTION	2024.05.23
6	ISSUED FOR ADDENDUM 2	2024.04.25
5	RE-ISSUED FOR PERMIT	2024.04.18
4	ISSUED FOR BIDS	2024.04.09
3	ISSUED FOR BUILDING PERMIT	2024.03.21
2	ISSUED FOR PROGRESS	2024.02.23
1	ISSUED FOR PROGRESS	2024.02.15

No.	Issue	Date

General Contractor shall check and verify all dimensions and report all errors and omissions to the Architect. Do not scale the drawings. Drawings shall not be used for construction purposes until issued by the Architect for construction.

Drawing Title:
**LEVEL 0 & 1 LIGHTING
DEMOLITION PLANS**

Scale: 1:100 Date: 05/01/2023

Drawn by: T.T. Checked by: J.P.

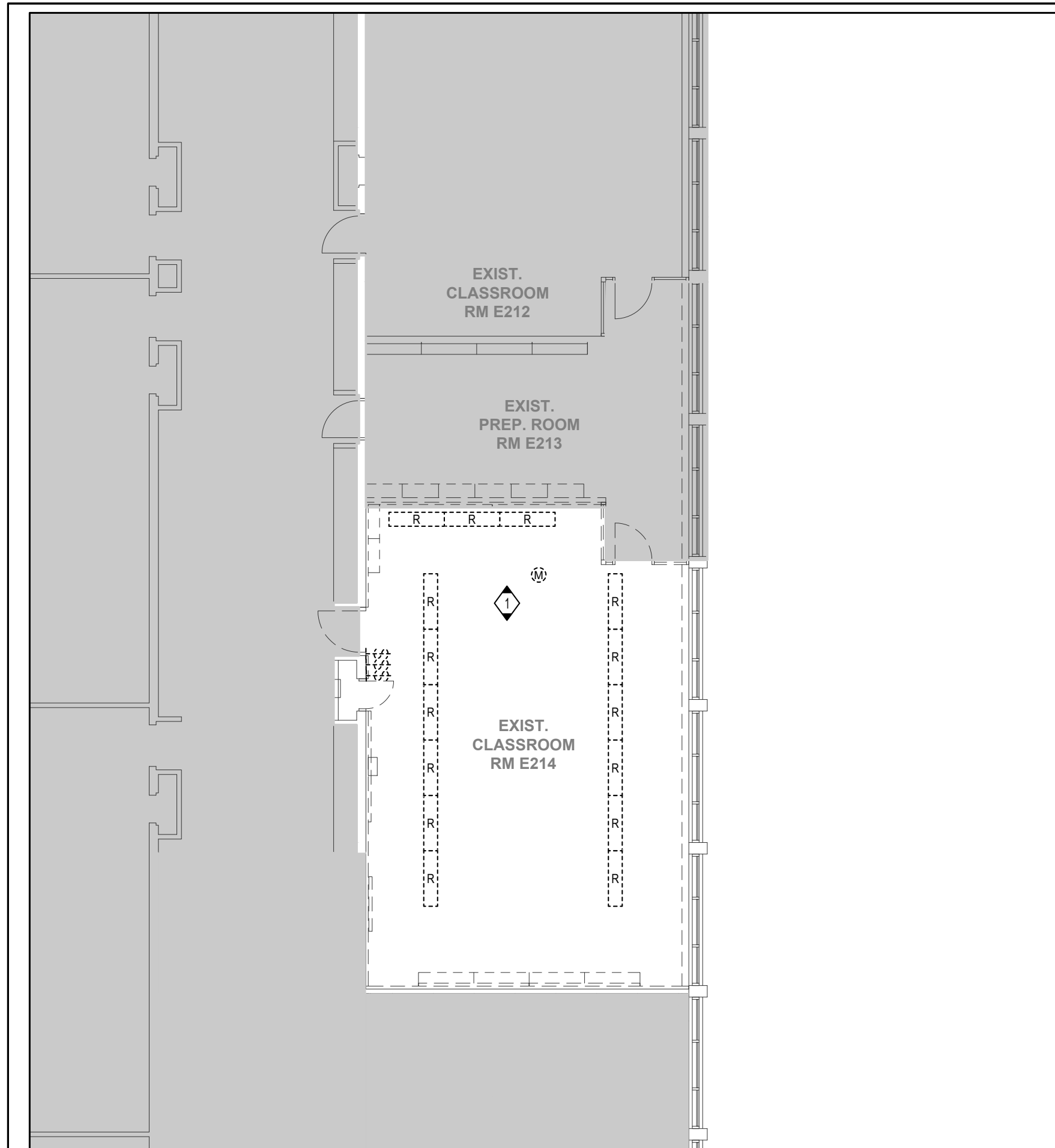
Job No. 2215B Drawing No. E200

GENERAL NOTES

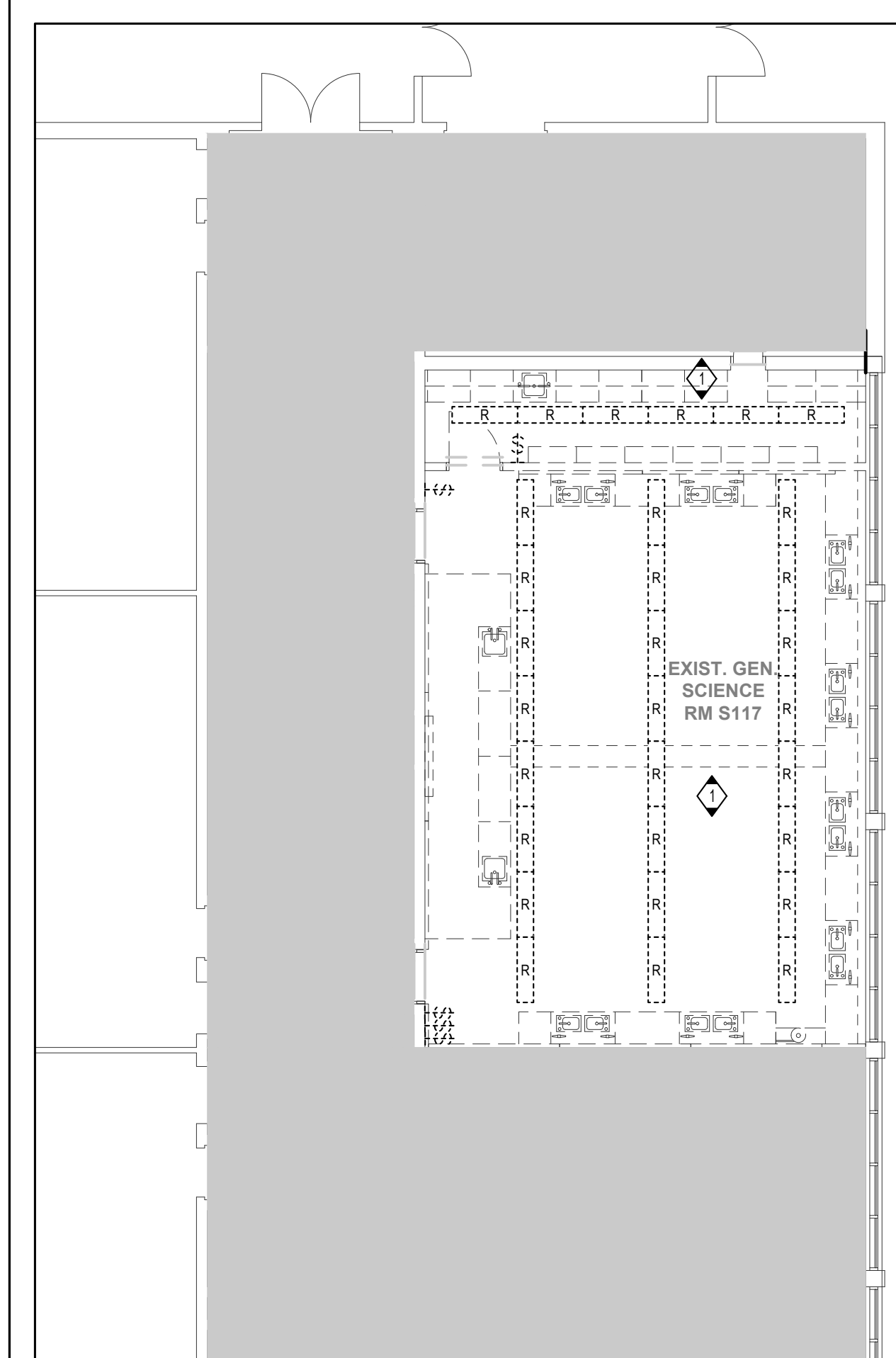
1. REFER TO DRAWING E000 FOR DEMOLITION NOTES.

DRAWING NOTES

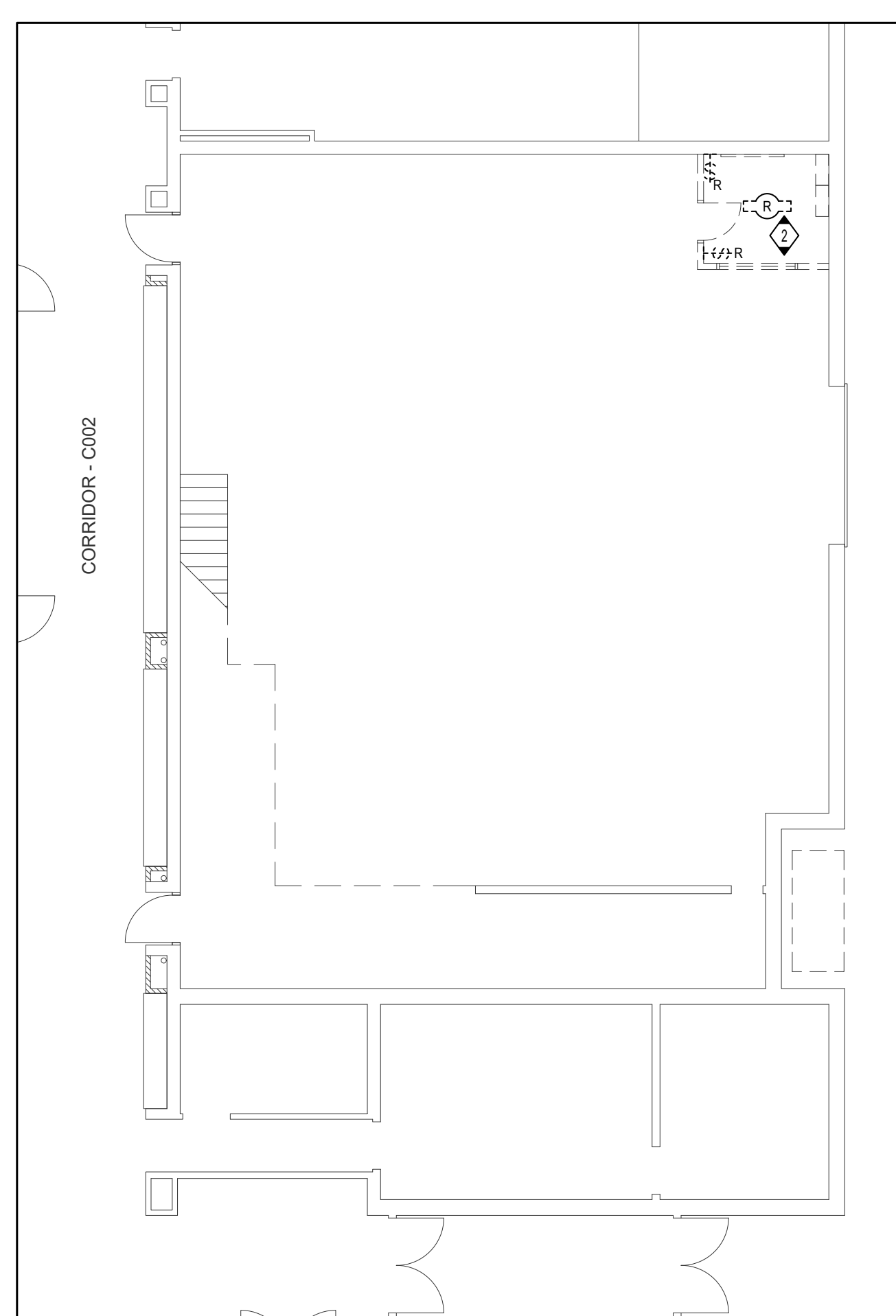
- 1. UNLESS INDICATED OTHERWISE, DISCONNECT AND REMOVE ALL EXISTING LIGHTING FIXTURES IN THIS ROOM/AREA COMPLETE WITH ASSOCIATED LIGHT SWITCHES. TEMPORARILY COIL EXISTING BRANCH CIRCUIT WIRING FOR RE-USE TO FEED NEW LIGHTING FIXTURES. REFER TO DRAWING E201 FOR NEW LIGHTING PLANS.
- 2. UNLESS INDICATED OTHERWISE, DISCONNECT AND REMOVE ALL EXISTING LIGHTING FIXTURES IN THIS ROOM/AREA COMPLETE WITH ASSOCIATED LIGHT SWITCHES. MAKE SAFE.



3 AREA 3 - DEMOLITION LIGHTING
E200 1:100

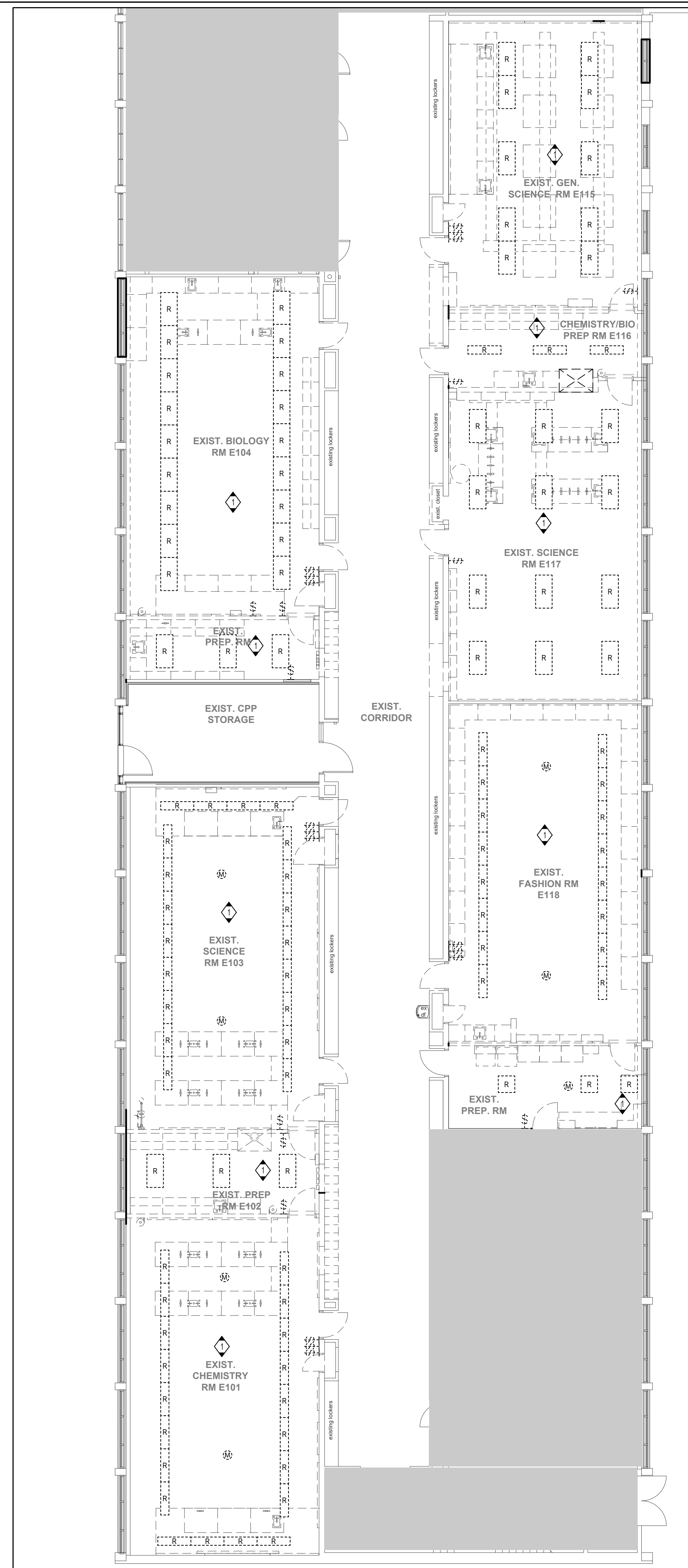


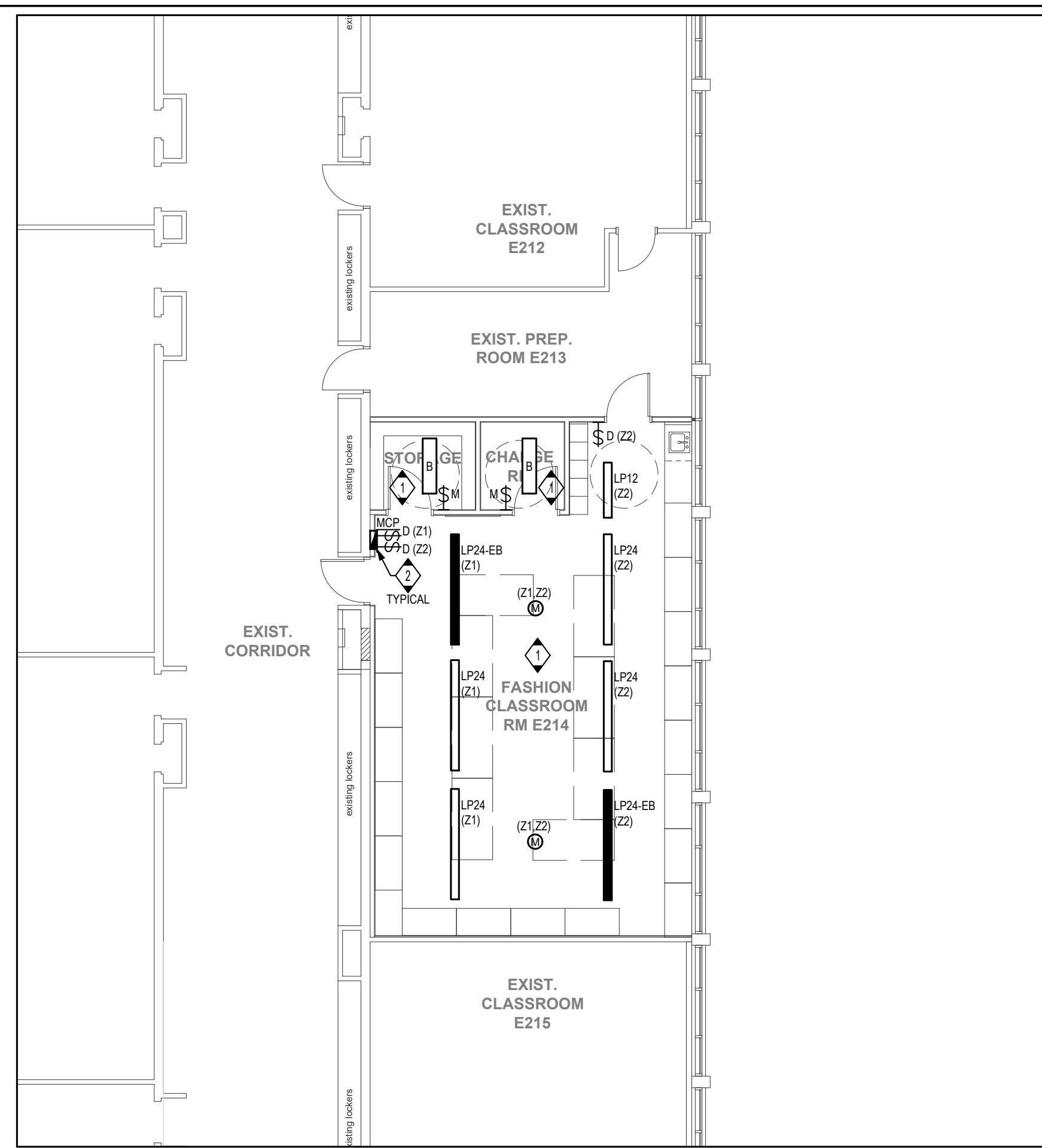
2 AREA 2 - DEMOLITION LIGHTING
E200 1:100



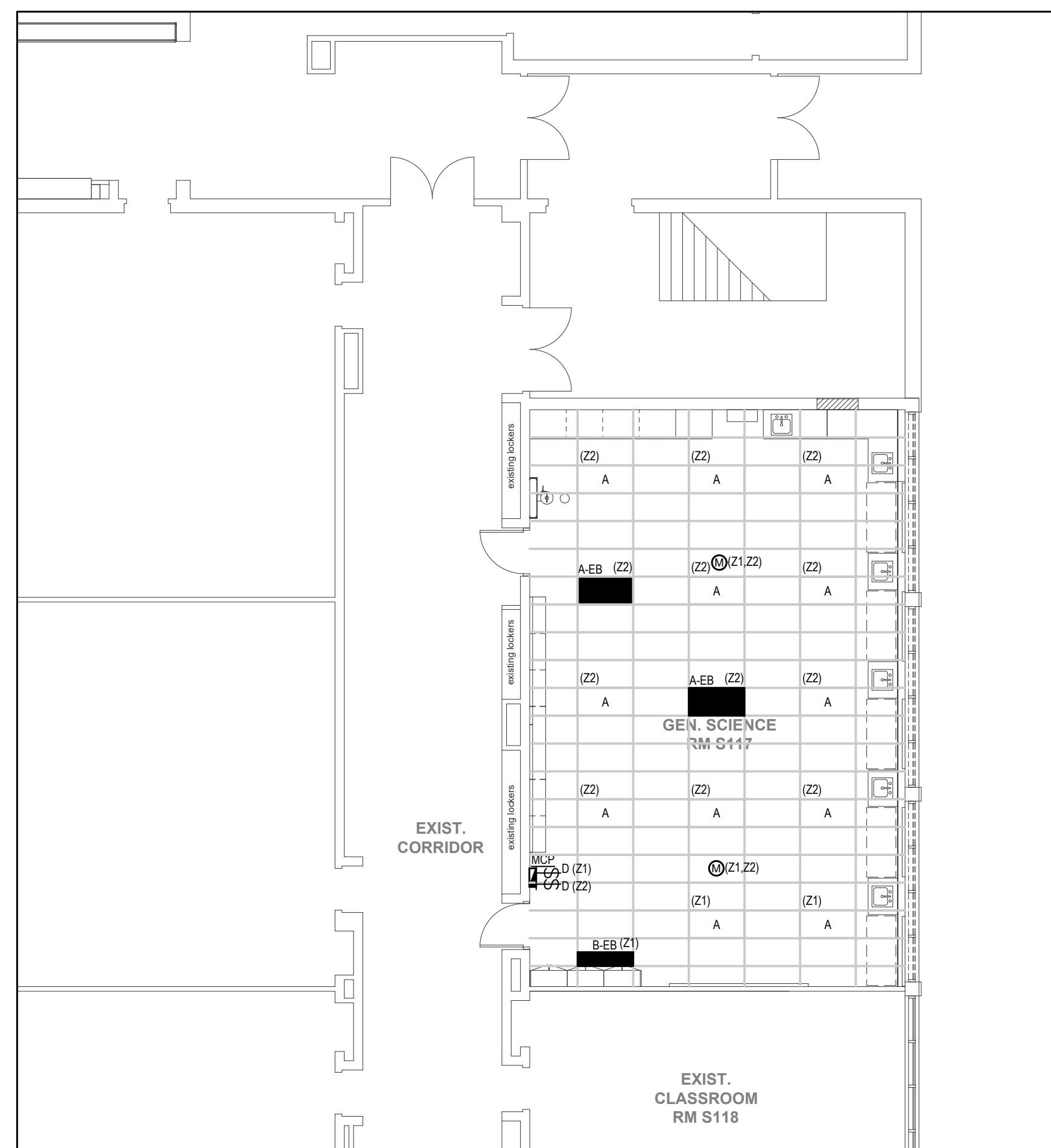
4 WORK SHOP DEMOLITION LIGHTING
E200 1:100

1 AREA 1 - DEMOLITION LIGHTING
E200 1:100





3 AREA 3 - RENOVATION LIGHTING
E201 1:100



2 AREA 2 - RENOVATION LIGHTING
E201 1:100

GENERAL NOTES

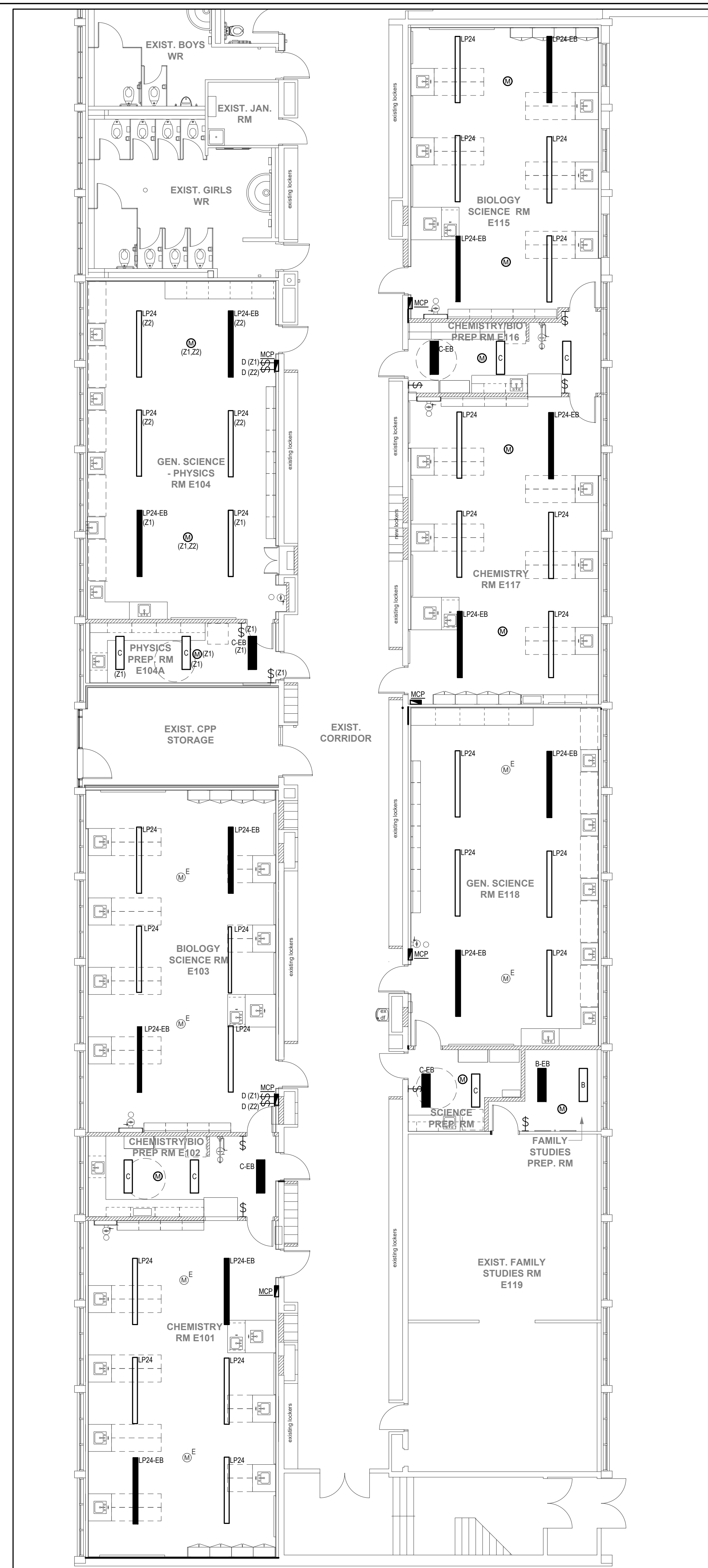
1. REFER TO LIGHTING CONTROLS NOTE ON DRAWING E001.

DRAWING NOTES

1. UNLESS INDICATED OTHERWISE, WIRE ALL NEW LIGHTING FIXTURE IN THIS ROOM TO EXISTING ROOM LIGHTING BRANCH CIRCUIT WIRING MADE AVAILABLE/SPARE BY THE DEMOLITION AND THROUGH NEW LIGHTING CONTROL DEVICES AND CONTROL ZONES AS INDICATED ON PLANS. MODIFY AND EXTEND EXISTING BRANCH CIRCUIT WIRING AS REQUIRED.

2. REFER TO TYPICAL MILLWORK/MODULAR CONTROL PANEL DETAIL ON DRAWING E301.

1 AREA 1 - RENOVATION LIGHTING
E201 1:100



Key Plan N.T.S.



Project North True North

No.	Revisions	Date
6	ISSUED FOR CONSTRUCTION	2024.05.23
5	RE-ISSUED FOR PERMIT	2024.04.18
4	ISSUED FOR BIDS	2024.04.09
3	ISSUED FOR PERMIT	2024.03.21
2	ISSUED FOR PROGRESS	2024.02.23
1	ISSUED FOR PROGRESS	2024.02.15
No.	Issue	Date

General Contractor shall check and verify all dimensions and report all errors and omissions to the Architect. Do not scale the drawings. Drawings shall not be used for construction purposes until issued by the Architect for construction.

Drawing Title:
LEVEL 0 & 1 LIGHTING RENOVATION PLANS

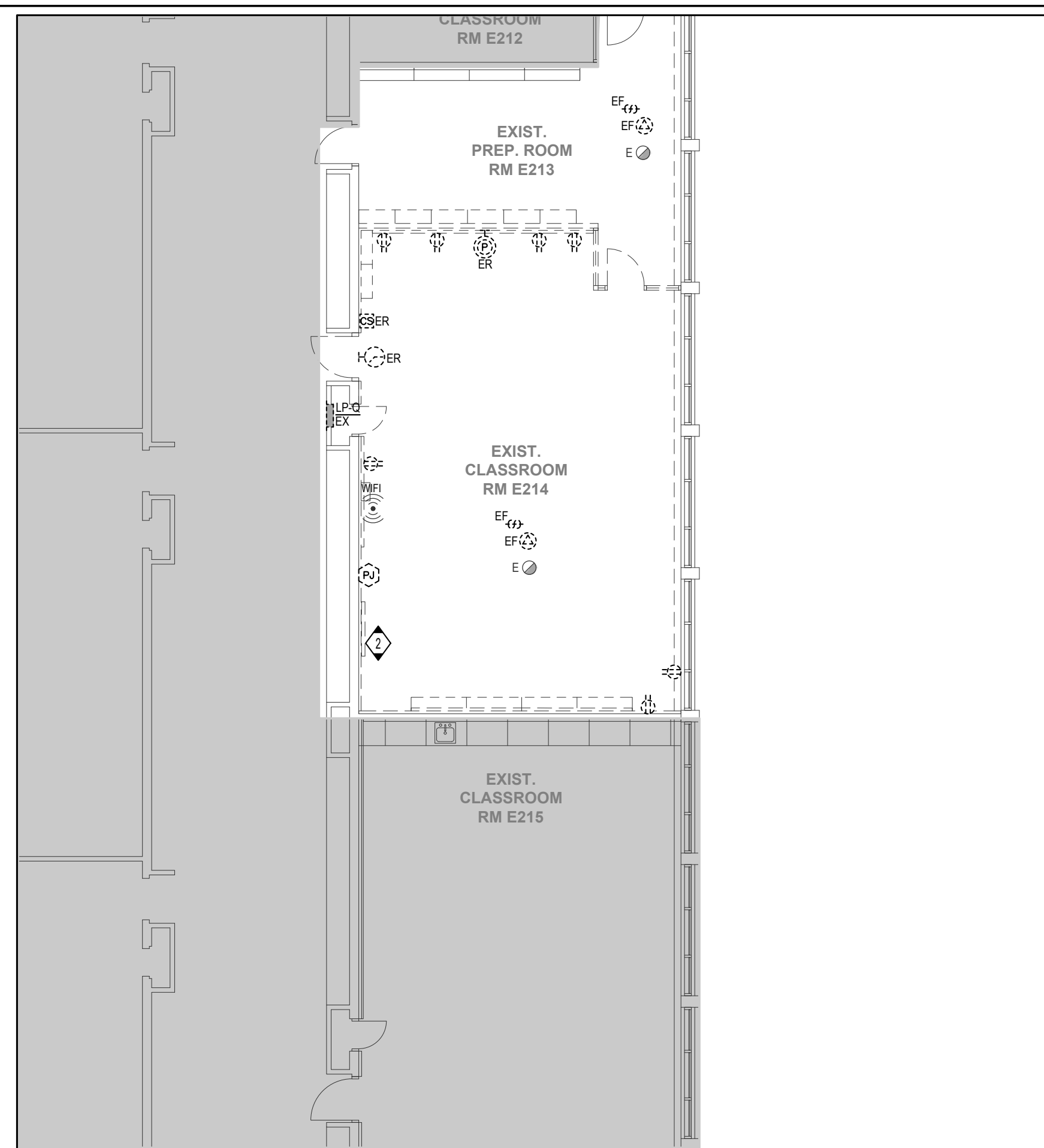
Scale: 1:100 Date: 05/01/2023

Drawn by: T.T. Checked by: J.P.

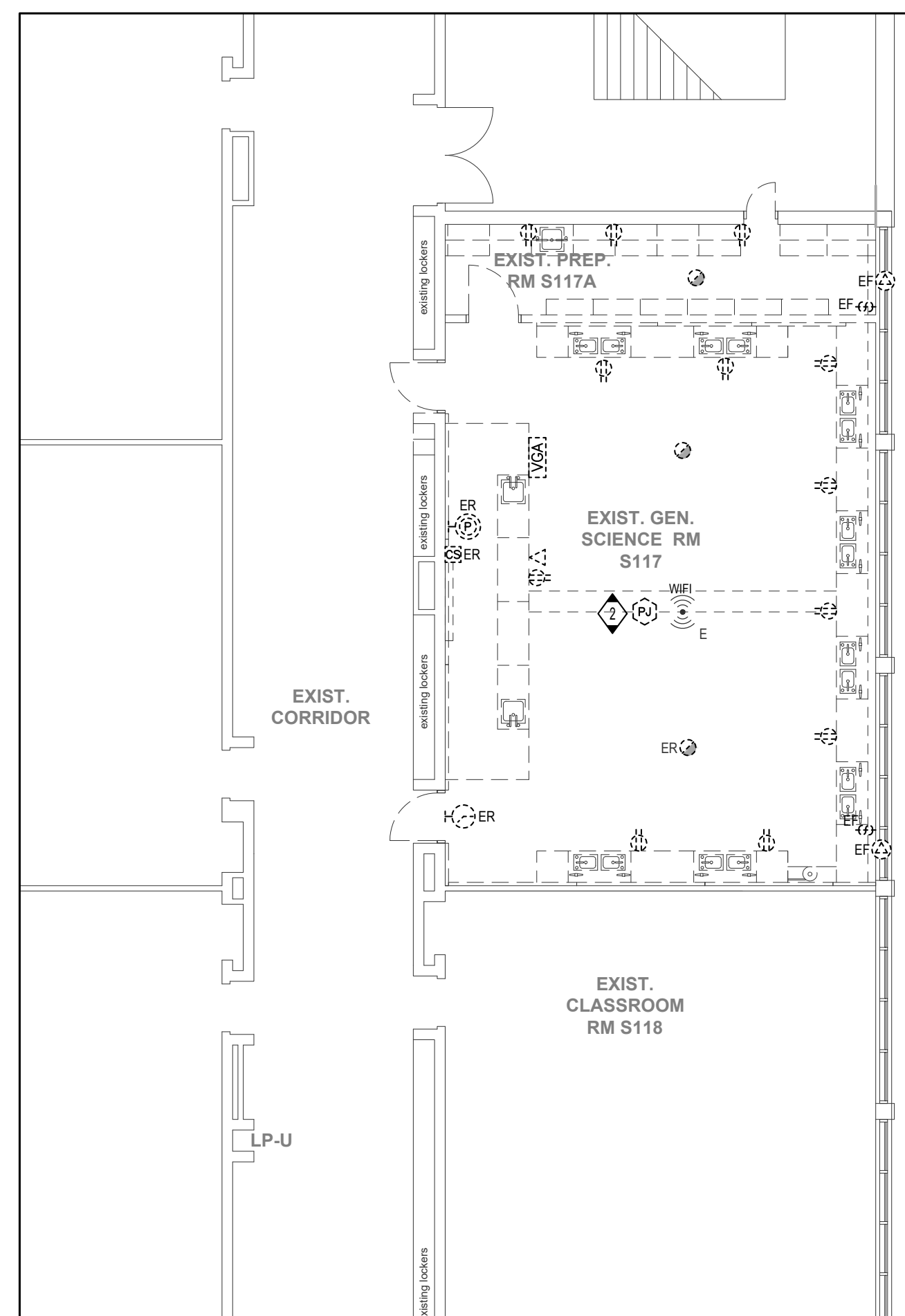
Job No. Drawing No.

2215B

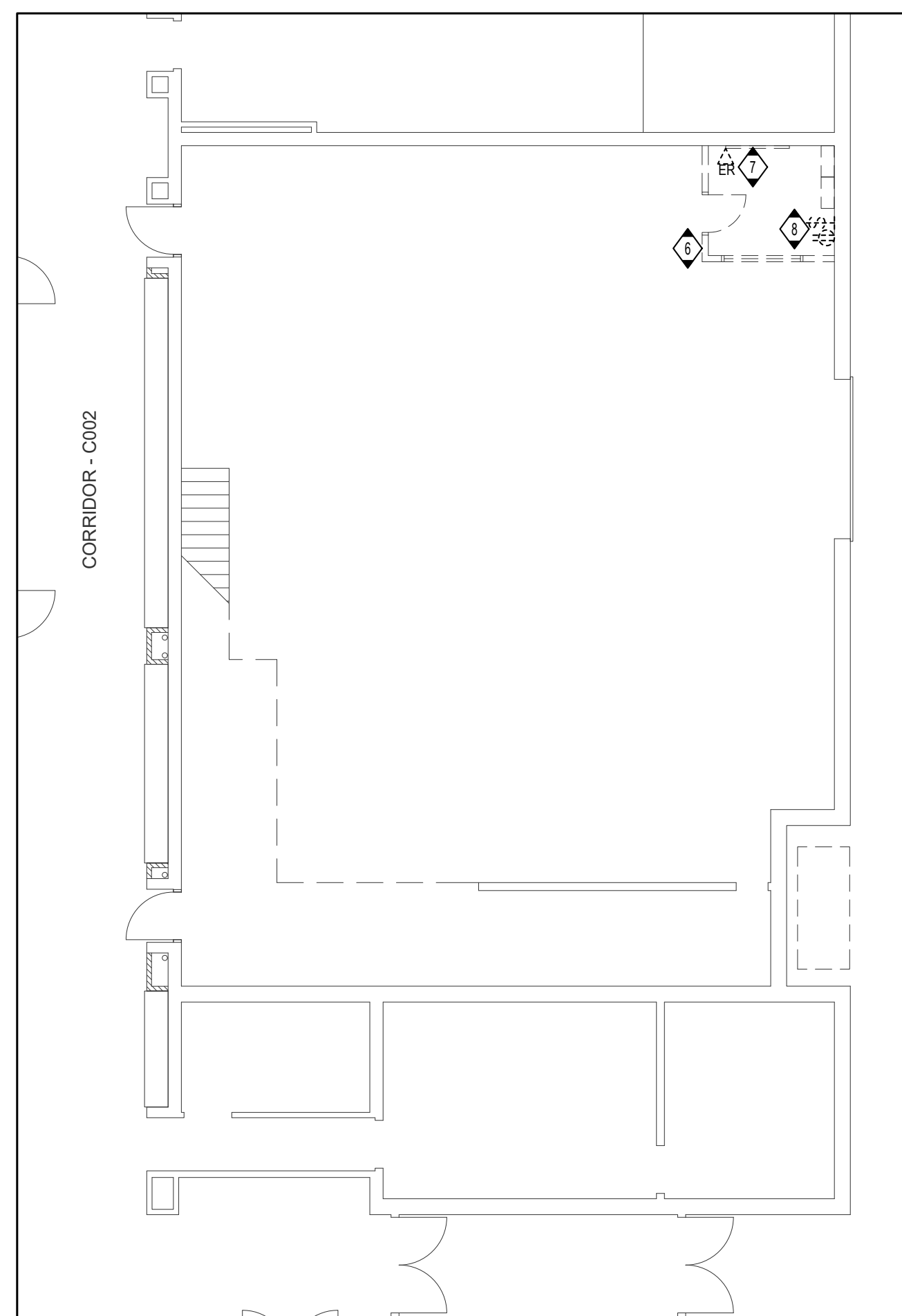
E201



3 AREA 3 - DEMOLITION POWER
E300 1:100



2 AREA 2 - DEMOLITION POWER
E300 1:100



4 WORK SHOP DEMOLITION POWER
E300 1:100

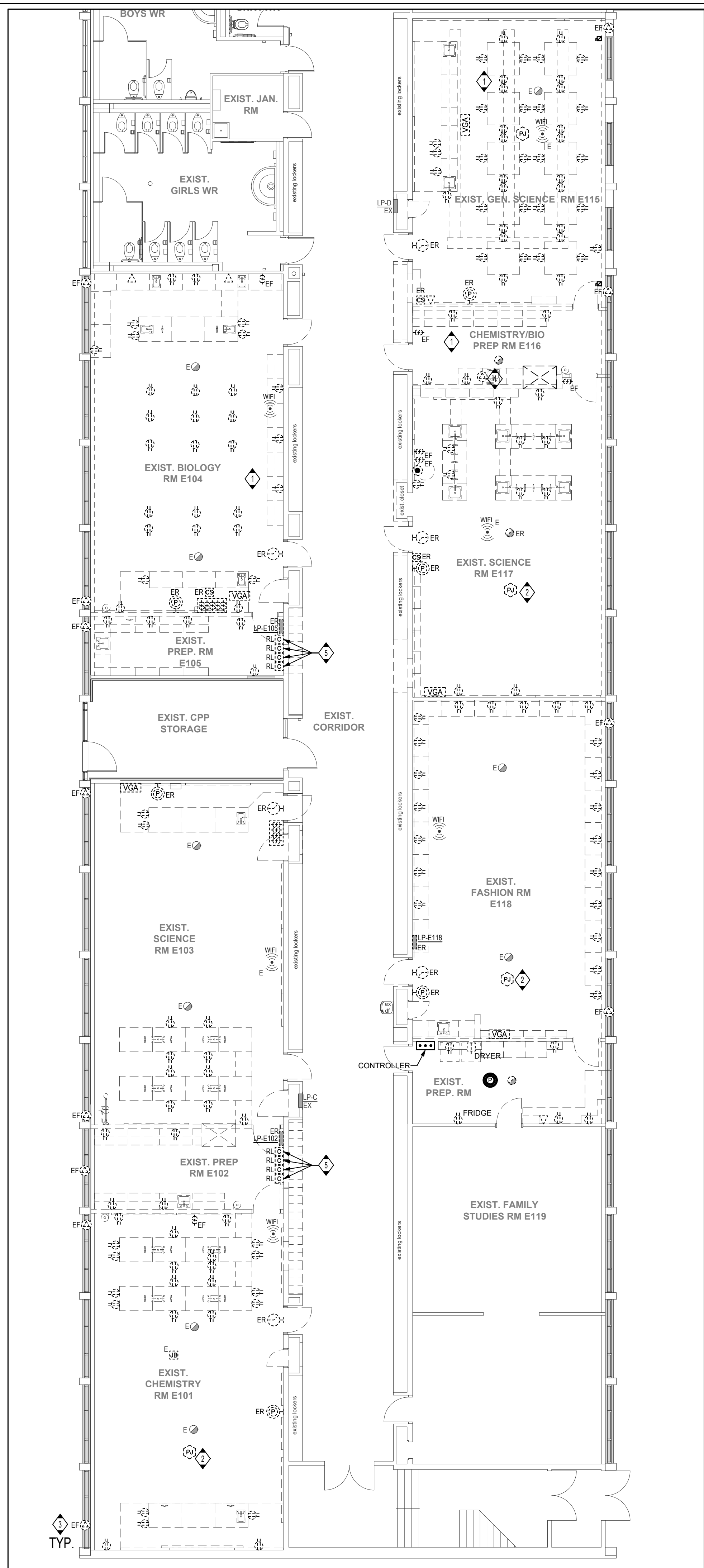
GENERAL NOTES

- REFER TO DRAWING E000 FOR DEMOLITION NOTES.

DRAWING NOTES

- UNLESS INDICATED OTHERWISE, DISCONNECT AND REMOVE ALL EXISTING RECEPTACLES AND DEVICES AS INDICATED COMPLETE WITH ASSOCIATED CONDUITS AND CONDUCTORS.
- REMOVE EXISTING MONITOR AND EXISTING CEILING MOUNTED PROJECTOR AND RETURN TO OWNER.
- DISCONNECT AND REMOVE EXISTING WALL MOUNTED PROPELLER EXHAUST FAN AND ASSOCIATED THERMOSTAT AND WIRING. COORDINATE WITH MECHANICAL CONTRACTOR PRIOR TO REMOVAL.
- REMOVE EXISTING DAMPERACTUATOR AND ASSOCIATED WIRING.
- RELOCATE EXISTING LAB RECEPTACLES CONTROL CONTACTORS REFER TO DRAWING E301 FOR NEW LOCATIONS.
- EMERGENCY SHUT OFF TO BE RELOCATED TO AN ADJACENT WALL. SITE CONFIRM EXACT LOCATION ONSITE.
- RELOCATE EXISTING DATA OUTLET OUT OF THE ROOM. SITE CONFIRM EXACT LOCATION ONSITE.
- RELOCATE EXISTING ELECTRICAL DEVICES OUT OF THE ROOM. SITE CONFIRM EXACT LOCATION ONSITE.

1 AREA 1 - DEMOLITION POWER
E300 1:100



3 TYP.

Key Plan N.T.S.



Project North True North

No. Revisions Date

No.	Revisions	Date

7	ISSUED FOR CONSTRUCTION	2024.05.23
6	ISSUED FOR ADDENDUM 2	2024.04.25
5	RE-ISSUED FOR PERMIT	2024.04.18
4	ISSUED FOR BIDS	2024.04.09
3	ISSUED FOR PERMIT	2024.03.21
2	ISSUED FOR PROGRESS	2024.02.23
1	ISSUED FOR PROGRESS	2024.02.15
No.	Issue	Date

General Contractor shall check and verify all dimensions and report all errors and omissions to the Architect. Do not scale the drawings. Drawings shall not be used for construction purposes until issued by the Architect for construction.

Drawing Title:
**LEVEL 0 & 1
POWER & SYSTEMS
DEMOLITION PLANS**

Scale: 1:100 Date: 05/01/2023

Drawn by: T.T. Checked by: J.P.

Job No. Drawing No.

2215B E300

**T.A. BLAKELOCK H.S.
RENOVATION**

1160 Rebecca Street, Oakville, ON
L6L 1Y9

Architect

sn/der

Snyder Architects Inc.
100 Broadview Ave. Suite 201, Toronto, ON, M4M 3H3
Tel: 416.966.5444 Fax: 416.966.4443
www.snyderarchitects.ca

Consultants

Structural Consultants
Kalos Engineering Inc.
875 Main St. W. Unit 3
Hamilton, Ontario L8S 4P9
Tel: 905-333-0119

Mechanical and Electrical Consultants
EXP
1266 S. Service Rd.
Stoney Creek, Ontario, L8E 5R9
Tel: 905-525-6069

Key Plan N.T.S.



Project North True North

No.	Revisions	Date

7	ISSUED FOR CONSTRUCTION	2024.05.23
6	RE-ISSUED FOR PERMIT	2024.04.18
5	ISSUED FOR ADDENDUM 01	2024.04.16
4	ISSUED FOR BIDS	2024.04.09
3	ISSUED FOR PERMIT	2024.03.21
2	ISSUED FOR PROGRESS	2024.02.23
1	ISSUED FOR PROGRESS	2024.02.15

General Contractor shall check and verify all dimensions and report all errors and omissions to the Architect. Do not scale the drawings. Drawings shall not be used for construction purposes until issued by the Architect for construction.

Drawing Title:
**LEVEL 0 & 1
POWER & SYSTEMS
RENOVATION PLANS**

Scale: 1:100 Date: 05/01/2023

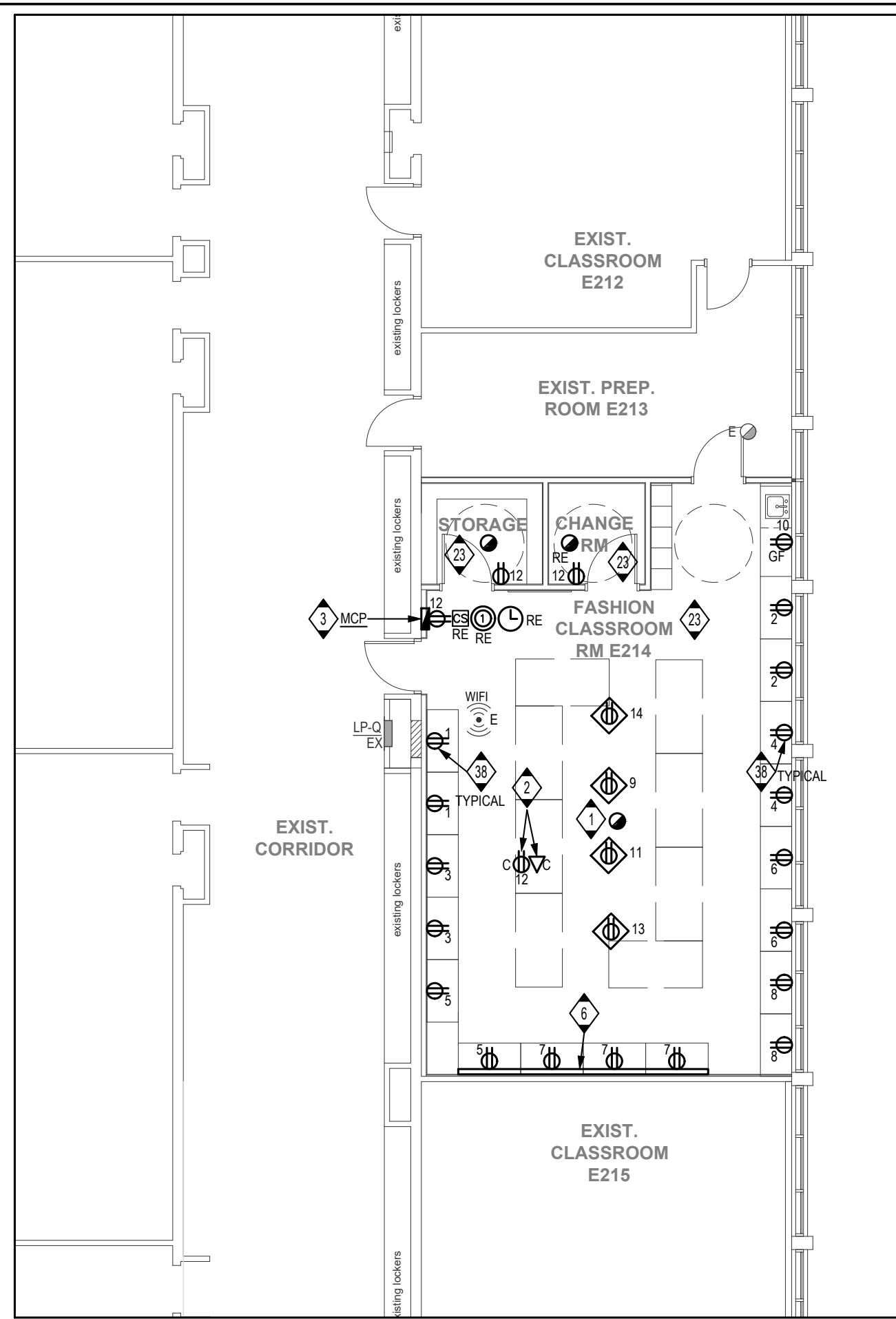
Drawn by: T.T. Checked by: J.P.

Job No. Drawing No.

2215B E301

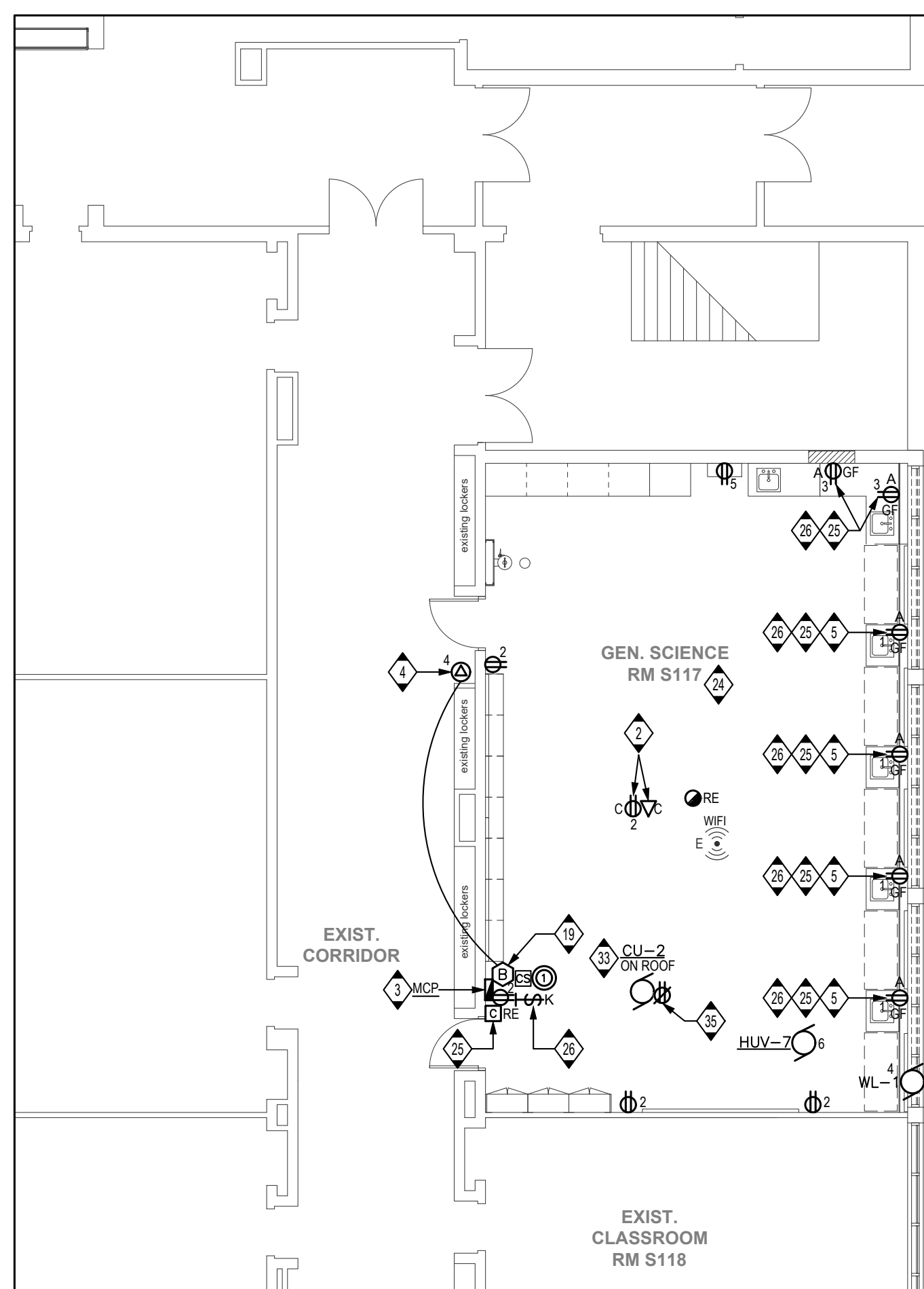
DRAWING NOTES

- 1 PROVIDE FOUR (4) POWER DROP PULLEY AT INDICATED LOCATION. COORDINATE WITH ARCHITECT FOR EXACT LOCATION.
- 2 FOR CEILING MOUNTED PROJECTOR, CONFIRM EXACT LOCATION WITH GENERAL CONTRACTOR PRIOR TO ROUGH-INS. PROJECTOR SUPPLIED AND INSTALLED BY THE GENERAL CONTRACTOR.
- 3 MODULAR CONTROL PANEL BY GENERAL CONTRACTOR, REFER TO TYPICAL MILLWORK/MODULAR CONTROL PANEL DETAIL ON THIS DRAWING FOR ELECTRICAL SCOPE OF WORK ASSOCIATED WITH THIS PANEL.
- 4 MECHANICAL DIVISION SUPPLIED AND INSTALLED GAS SUPPLY SOLENOID VALVE IN CEILING SPACE. RUN AND CONNECT A 120V BRANCH CIRCUIT TO VALVE THROUGH MECHANICAL DIVISION SUPPLIED AND INSTALLED PUSHBUTTON AS SHOWN ON PLANS. PROVIDE A FIRE ALARM CONTROL RELAY (FACR) AND INTERLOCK WITH GAS VALVE POWER SUPPLY FOR AUTOMATIC POWER SHUT-OFF ON FIRE ALARM ACTIVATION. REFER TO DRAWING NOTE NO. 19 ON THIS DRAWING.
- 5 MOUNT FACING UP, ON TOP OF WINDOW SILL. REFER TO ARCHITECTURAL FOR DETAILS.
- 6 RECESSED RACEWAY ALONG WALL COMPLETE WITH DUPLEX RECEPTACLES AS SHOWN. CONFIRM EXACT TOTAL LENGTH ON SITE PRIOR TO ORDERING.
- 7 RUN A 120V BRANCH CIRCUIT AND CONNECT TO PREWIRED JUNCTION BOX INTEGRAL TO THE FUME HOOD LOCATED ON TOP OF FUME HOOD.
- 8 PROVIDE A NEW 15A-2P BREAKER IN AVAILABLE SPACES OR REMOVE EXISTING BREAKERS MADE SPARE FROM DEMOLITION IN EXISTING PANEL AND CONNECT NEW BREAKER TO NEW HVD UNIT.
- 9 UNLESS OTHERWISE INDICATED, ALL BRANCH CIRCUIT NUMBERS SHOWN IN THIS ROOM ARE FROM EXISTING RELOCATED PANEL "LP-E102". REUSE EXISTING SPARE BREAKERS AND EXISTING BREAKERS MADE SPARE FROM THE DEMOLITION OR PROVIDE NEW BREAKERS AS REQUIRED.
- 10 EXISTING RELOCATED LAB RECEPTACLES CONTROL CONTACTOR FROM EXISTING PREP. ROOM E102 FOR CIRCUITS Nos. 10, 11 AND 12 FROM EXISTING RELOCATED PANEL "LP-E102".
- 11 EXISTING RELOCATED LAB RECEPTACLES CONTROL CONTACTOR FROM EXISTING PREP. ROOM E102 FOR CIRCUITS Nos. 14, 15 AND 16 FROM EXISTING RELOCATED PANEL "LP-E102".
- 12 REPLACE EXISTING LAMACOID NAMEPLATE WITH NEW WITH THE INSCRIPTION "BENCH RECEPTACLES CIRCUITS Nos. 10, 11 AND 12, BIOLOGY SCIENCE ROOM E107". REFER TO TYPICAL LAB RECEPTACLES CONTROL WIRING DIAGRAM ON THIS DRAWING.
- 13 KEY SWITCH FOR LAB RECEPTACLES IN CHEMISTRY ROOM E102. MOUNT IN MILLWORK/MODULAR CONTROL PANEL. WIRE PER TYPICAL LAB RECEPTACLES CONTROL WIRING DIAGRAM ON THIS DRAWING. CONFIRM EXACT LOCATION WITH OWNER PRIOR TO ROUGH-IN.
- 14 UNLESS OTHERWISE INDICATED, ALL BRANCH CIRCUIT NUMBERS SHOWN IN THIS ROOM ARE FROM EXISTING, RELOCATED PANEL "LP-E118". REUSE EXISTING SPARE BREAKERS AND EXISTING BREAKERS MADE SPARE FROM THE DEMOLITION OR PROVIDE NEW BREAKERS AS REQUIRED.
- 15 EXISTING RELOCATED LAB RECEPTACLES CONTROL CONTACTOR FROM EXISTING PREP. ROOM E105 FOR CIRCUITS Nos. 13 AND 15 FROM EXISTING RELOCATED PANEL "LP-E105".
- 16 REPLACE EXISTING LAMACOID NAMEPLATE WITH NEW WITH THE INSCRIPTION "BENCH RECEPTACLES CIRCUITS Nos. 13 AND 15 GENERAL SCIENCE PHYSICS ROOM E104". REFER TO TYPICAL LAB RECEPTACLES CONTROL WIRING DIAGRAM ON THIS DRAWING.
- 17 KEY SWITCH FOR LAB RECEPTACLES CONTROLS IN CHEMISTRY ROOM E105. MOUNT IN MILLWORK/MODULAR CONTROL PANEL AND WIRE PER TYPICAL LAB RECEPTACLES CONTROL WIRING DIAGRAM ON THIS DRAWING. CONFIRM EXACT LOCATION WITH OWNER PRIOR TO ROUGH-IN.
- 18 UNLESS OTHERWISE INDICATED, ALL BRANCH CIRCUIT NUMBERS SHOWN IN THIS ROOM ARE FROM EXISTING PANEL "LP-Q". REUSE EXISTING SPARE BREAKERS AND EXISTING BREAKERS MADE SPARE FROM THE DEMOLITION OR PROVIDE NEW BREAKERS AS REQUIRED.
- 19 UNLESS OTHERWISE INDICATED, ALL BRANCH CIRCUIT NUMBERS SHOWN IN THIS ROOM ARE FROM EXISTING PANEL "LP-U". REUSE EXISTING SPARE BREAKERS AND EXISTING BREAKERS MADE SPARE FROM THE DEMOLITION OR PROVIDE NEW BREAKERS AS REQUIRED.
- 20 EXISTING RELOCATED LAB RECEPTACLES CONTROL CONTACTOR FROM EXISTING PREP. ROOM E105 FOR CIRCUITS Nos. 1 AND 5 FROM EXISTING PANEL "LP-U".
- 21 REPLACE EXISTING LAMACOID NAMEPLATE WITH NEW WITH THE INSCRIPTION "BENCH RECEPTACLES CIRCUITS Nos. 1 AND 5 GENERAL SCIENCE ROOM S117". REFER TO TYPICAL LAB RECEPTACLES CONTROL WIRING DIAGRAM ON THIS DRAWING.
- 22 KEY SWITCH FOR LAB RECEPTACLES CONTROLS IN GENERAL SCIENCE ROOM S107. MOUNT IN MILLWORK/MODULAR CONTROL PANEL AND WIRE PER TYPICAL LAB RECEPTACLES CONTROL WIRING DIAGRAM ON THIS DRAWING. CONFIRM EXACT LOCATION WITH OWNER PRIOR TO ROUGH-IN.
- 23 EXISTING RELOCATED LAB RECEPTACLES CONTROL CONTACTOR FROM EXISTING PREP. ROOM E102 FOR CIRCUITS Nos. 19 AND 21 FROM EXISTING RELOCATED PANEL "LP-E118".
- 24 REPLACE EXISTING LAMACOID NAMEPLATE WITH NEW WITH THE INSCRIPTION "BENCH RECEPTACLES CIRCUITS Nos. 19 AND 21 GENERAL SCIENCE ROOM E119". REFER TO TYPICAL LAB RECEPTACLES CONTROL WIRING DIAGRAM ON THIS DRAWING.
- 25 KEY SWITCH FOR LAB RECEPTACLES IN CHEMISTRY ROOM E118. MOUNT IN MILLWORK/MODULAR CONTROL PANEL AND WIRE PER TYPICAL LAB RECEPTACLES CONTROL WIRING DIAGRAM ON THIS DRAWING.
- 26 EXISTING RELOCATED LAB RECEPTACLES CONTROL CONTACTOR FROM EXISTING PREP. ROOM E105 FOR CIRCUITS Nos. 13 AND 24 FROM EXISTING RELOCATED PANEL "LP-E118".
- 27 REPLACE EXISTING LAMACOID NAMEPLATE WITH NEW WITH THE INSCRIPTION "BENCH RECEPTACLES CIRCUITS Nos. 22, 23 AND 24 CHEMISTRY ROOM E117". REFER TO TYPICAL LAB RECEPTACLES CONTROL WIRING DIAGRAM ON THIS DRAWING.
- 28 KEY SWITCH FOR LAB RECEPTACLES CONTROLS IN BIOLOGY SCIENCE ROOM E115. MOUNT IN MILLWORK/MODULAR CONTROL PANEL AND WIRE PER TYPICAL LAB RECEPTACLES CONTROL WIRING DIAGRAM ON THIS DRAWING. CONFIRM EXACT LOCATION WITH OWNER PRIOR TO ROUGH-IN.
- 29 WIRE NEW EXHAUST FAN EF-1 TO EXISTING PANEL LP-D. CIRCUIT No 9-11.
- 30 WIRE NEW EXHAUST FAN EF-2 TO EXISTING RELOCATED PANEL LP-E118. CIRCUIT No 25-27.
- 31 WIRE NEW CONDENSING UNIT CU-1 TO A NEW 80A-3P BREAKER IN EXISTING PANEL DP-E. REFER TO DRAWING E100 FOR EXISTING PANEL DP-E LOCATION.
- 32 WIRE NEW CONDENSING UNIT CU-2 TO A NEW 35A-2P BREAKER IN EXISTING PANEL DP-F. REFER TO DRAWING E100 FOR EXISTING PANEL DP-F LOCATION.
- 33 MOUNT RECEPTACLE ADJACENT CU-1 AND WIRE TO A NEW 20A-1P BREAKER IN EXISTING PANEL LP-BB. REFER TO DRAWING E100 FOR EXISTING PANEL LP-BB LOCATION.
- 34 MOUNT RECEPTACLE ADJACENT CU-2 AND WIRE TO A NEW 20A-1P BREAKER IN EXISTING PANEL LP-BB. REFER TO DRAWING E100 FOR EXISTING PANEL LP-BB LOCATION.
- 35 MODIFY AND EXTEND EXISTING P.A. AND CLOCK SYSTEMS WIRING ARE REQUIRED AND RE-CONNECT TO RELOCATED SPEAKER. CALL SWITCH AND CLOCK. TYPICAL FOR ALL EXISTING RELOCATED SPEAKERS, CALL SWITCHES AND CLOCKS.
- 36 PROVIDE 120V POWER TO COMBINATION SMOKE FIRE DAMPER (CSFD). REVIEW CSFD SHOP DRAWINGS PRIOR TO ROUGH-IN. LOW VOLTAGE TRANSFORMER AND DUCT SMOKE DETECTOR TO BE SUPPLIED WITH THE UNIT COORDINATE WITH MECHANICAL CONTRACTOR. CONNECT SMOKE DETECTOR TO THE CLOSEST FIRE ALARM ZONE. UPON ACTIVATION OF THE DETECTOR THE CSFD TO CLOSE AN ALARM NOTIFICATION SHALL BE INDICATED ON THE FIRE ALARM PANEL.
- 37 DUPLEX RECEPTACLES RECESSED AT EVERY SEWING STATION LOCATION. REFER TO ARCHITECTURAL DRAWINGS FOR EXACT LOCATION AND MOUNTING HEIGHT.



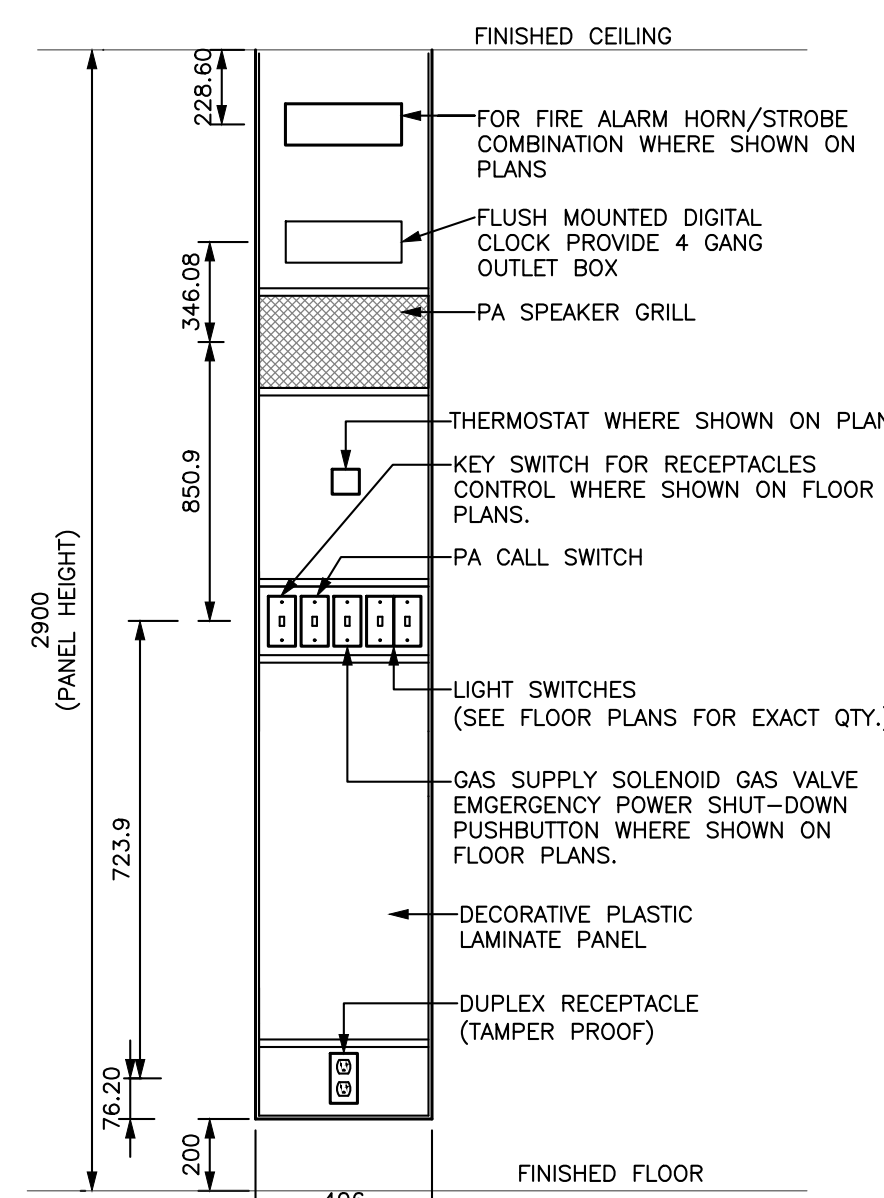
3 AREA 3 - RENOVATION POWER

E301 1:100



2 AREA 2 - RENOVATION POWER

E301 1:100

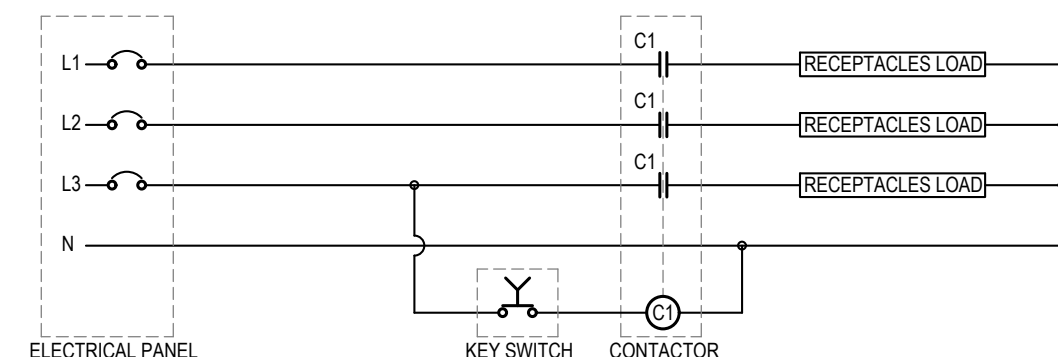


4 TYPICAL MILLWORK/MODULAR CONTROL PANEL DETAIL

E301 N.T.S.

GENERAL NOTES

1. REFER TO DRAWING E000 FOR DEMOLITION NOTES.
2. COORDINATE ALL REQUIRED POWER SHUT-DOWNS WITH THE SCHOOL BOARD. PROVIDE A ONE (1) WEEK NOTICE PRIOR TO ANY SHUT-DOWN AND PERFORM ALL REQUIRED WORK OUTSIDE OF REGULAR SCHOOL HOURS OF OPERATION AND ON WEEKENDS AND AT PREMIUM TIME.

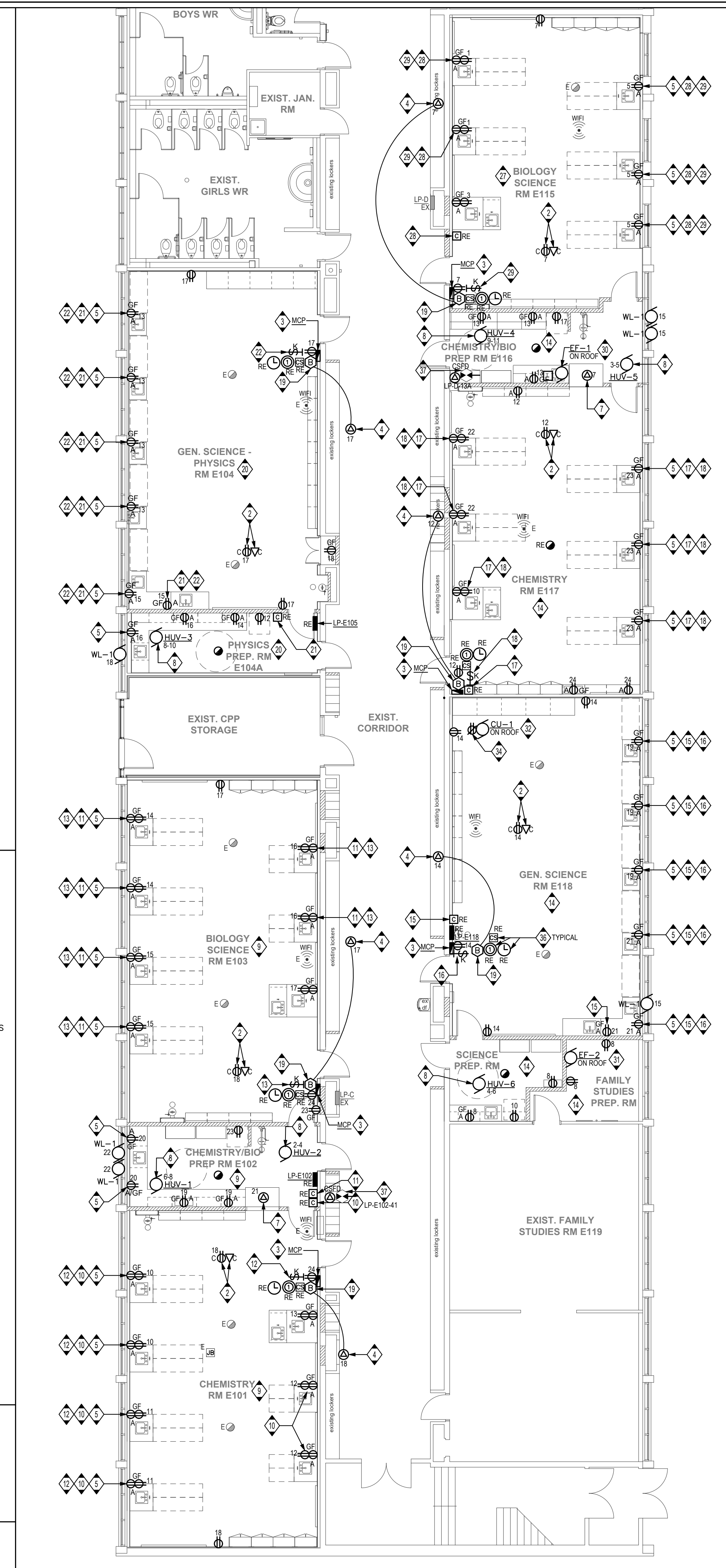


4 TYPICAL LAB RECEPTACLES CONTROL WIRING DIAGRAM

E301 N.T.S.

1 AREA 1 - RENOVATION POWER

E301 1:100



E301 1:100