



True North

[illegible]

General Contractor shall check and verify all dimensions and report all errors and omissions to the Architect. Do not scale the drawings. Drawings shall not be used for construction purposes until issued by the Architect for construction.



SECOND FLOOR PARTIAL RENOVATION PLAN

Drawn by: MS | Checked by:

| | |
|---------|-------------|
| Job No. | Drawing No. |
|---------|-------------|

2323

A 210

1. CONTRACTOR TO ENSURE THAT THE PORTION OF THE BUILDING BEING RETAINED IS HANDED BACK TO THE OWNER (ON COMPLETION OF CONSTRUCTION) IN A CONDITION SIMILAR TO ITS EXISTING CONDITION OR BETTER. THIS REQUIREMENT INCLUDES PROVISION OF ALL NECESSARY PROTECTIVE MEASURES LIKE SECURITY, PROTECTION FROM THE ELEMENTS AND WEATHER, HEATING / DEHUMIDIFICATION AS NECESSARY, ETC.
2. REMOVE EXISTING TAKEBOARDS & MARKERBOARDS INCLUDING ADHESIVE AS NECESSARY TO DO RENOVATION. INCLUDE FILLING IN DAMAGED CMU.
3. TO PERFORM DEMOLITION OF EXISTING BUILDING ELEMENTS CO-ORDINATE WITH STRUCTURAL AND MECHANICAL & ELECTRICAL DRAWINGS.
4. CONTRACTOR REQUIRED TO CUT EXISTING SLAB ON GRADE AS INDICATED FOR NEW SANITARY & PIPELINES. REFER TO MECH. DWGS, FOR EXACT LOCATIONS. INFILL FLOOR SLAB TO MATCH EXISTING AND MAKE GOOD ALL AFFECTED SURFACES.
5. CONTRACTOR IS RESPONSIBLE TO CAREFULLY REMOVE EXISTING CEILING TILE TO ACCOMMODATE ALL NEW MECH. & ELEC. CONNECTIONS. REINSTATE TILE AFTER WORK IS COMPLETE. REFER TO MECH. DWGS. FOR EXACT LOCATIONS.
6. FOR EXACT QUANTITIES AND LOCATIONS OF MECHANICAL & ELECTRICAL ITEMS, PLEASE REFER MECHANICAL & ELECTRICAL DWGS.

1. ALL INTERIOR PARTITIONS TO BE EXTENDED UP TO UNDERSIDE OF SLAB OR ROOF DECK ABOVE UNLESS NOTED OTHERWISE. NON LOAD BEARING WALLS TO STOP 25mm BELOW THE UNDERSIDE OF SLAB OR UNDERSIDE OF STEEL DECK. PROVIDE CONTINUOUS 10mm SEAL AT TOP. (USE TESTED FIRE STOP CMU SEAL @ JOINT OF SLAB, ROOF DECK AND PENETRATIONS REQUIRED AT ALL FIRED WALLS.
2. ALL DIMENSIONS ON FLOOR PLANS ARE SHOWN AS MASONRY OPENINGS. (ROUGH OPENINGS)
3. ALL NEW AND EXISTING EXTERIOR ROOF TO BE ORGANIZED - SEE SPECIFICATIONS.
4. PROVIDE 100mm SOLID CMU CHASE AROUND ALL PIPE AND DUCT DIPS AS REQUIRED. CO-ORDINATE WITH MECH. DWGS.
5. PROVIDE NEW MANUAL WINDOW SHADES
 - a) AT ALL NEW AND EXISTING EXTERIOR WINDOWS FOR CLASSROOMS, SCIENCE LABS AND SPECIALTY ROOMS AS MARKED ON PLANS.
 - b) PROVIDE WINDOW BLOCKING @ WINDOW HEADS FOR SHADE INSTALLATION.
6. CONTRACTOR TO VERIFY EXISTING BUILDING DIMENSIONS AND MODIFY NEW CONSTRUCTION TO SUIT.
7. SC08 FLOORING TO GRAB SLIPS AND FLOOR EXISTING FLOOR SUBSTRATE TO PROVIDE POSITIVE DRAINAGE TO NEW OR EXISTING FLOOR DRAIN.
8. SC08 FLOORING TO USE SELF LEVELLING COMPOUND IF REQUIRED UPON REMOVAL OF EXISTING FLOORING TO SUIT NEW FLOOR INSTALLATION.
9. SC09 DRYWALL AND DRYWALL TO INCLUDE PROVISION FOR 50 NEW ACOUSTIC CEILING TILES TO REPLACE ANY DAMAGED TILES WHILE CONNECTING REQUIRED MECH. & ELECTRICAL SERVICES THROUGH EXISTING CORRIDORS.
10. SC09 DRYWALLS AND DRYWALL TO INCLUDE 10 NUMBERS OF 300x300B-FR @ EXISTING OPENINGS IN WALLS- LOCATION AS DIRECTED BY CONSULTANT ON SITE.
11. SC01 GENERAL TO INCLUDE PROVISION FOR 3 ADDITIONAL MASONRY CHASES. (300x300mm CLEAR)
12. SC01 GENERAL TO PATCH EXISTING MASONRY OPENINGS FROM MISCELLANEOUS REMOVED PIPES AND DUCTWORK FROM EXPOSED CEILINGS. INCLUDE 20 LOCATIONS TO BE CONFIRMED ON SITE, UP TO 300MM IN DIAMETER

AL/ALUM - ALUMINUM
AFF - ABOVE FINISH FLOOR
AVBSM - AIR VAPOUR BARRIER SHEET
MEMBRANE
C.J - CONTROL JOINT
CMU - CONCRETE MASONRY UNIT
CONT - CONTINUOUS
C/W - COMPLETE WITH
DIA. - DIAMETER
E.J. - EXPANSION JOINT
EX/EXST - EXISTING
FEC - FIRE EXTINGUISHER CABINET.
FULLY RECESSED - TYP. SEE MECH.
DWGS
FRB - FIRE RESISTANT RATING
GB - GYPSUM BOARD
GB-AR - ABUSE- RESISTANT GYPSUM BOARD
GB-BB - BACKING BOARD GYPSUM BOARD
GB-FR - FIRE- RATED GYPSUM BOARD
GB-SB - CEILING/ SOFFIT GYPSUM BOARD
GB-SL - SHAFT LINER GYPSUM BOARD
GL - GLAZING
GSB - GYPSUM SHEATHING BOARD
INS - INSULATION
LOK - METAL LOCKER
MB - MARKER BOARD
MD - MILLWORK DETAIL
MIR - MIRROR
MIRR - MIRRORRED
MWP - METAL WALL PANEL
NIC - NOT IN CONTRACT
NTS - NOT TO SCALE
O - OVER
OD - OUTER DIAMETER
PREFIN - PREFINISHED
PT. PLY - PRESSURE TREATED PLYWOOD
SIM - SIMILAR
SS - STAINLESS STEEL
TB - TACK BOARD
UNO - UNLESS OTHERWISE NOTED
U/S - UNDERSIDE
W/ - WITH

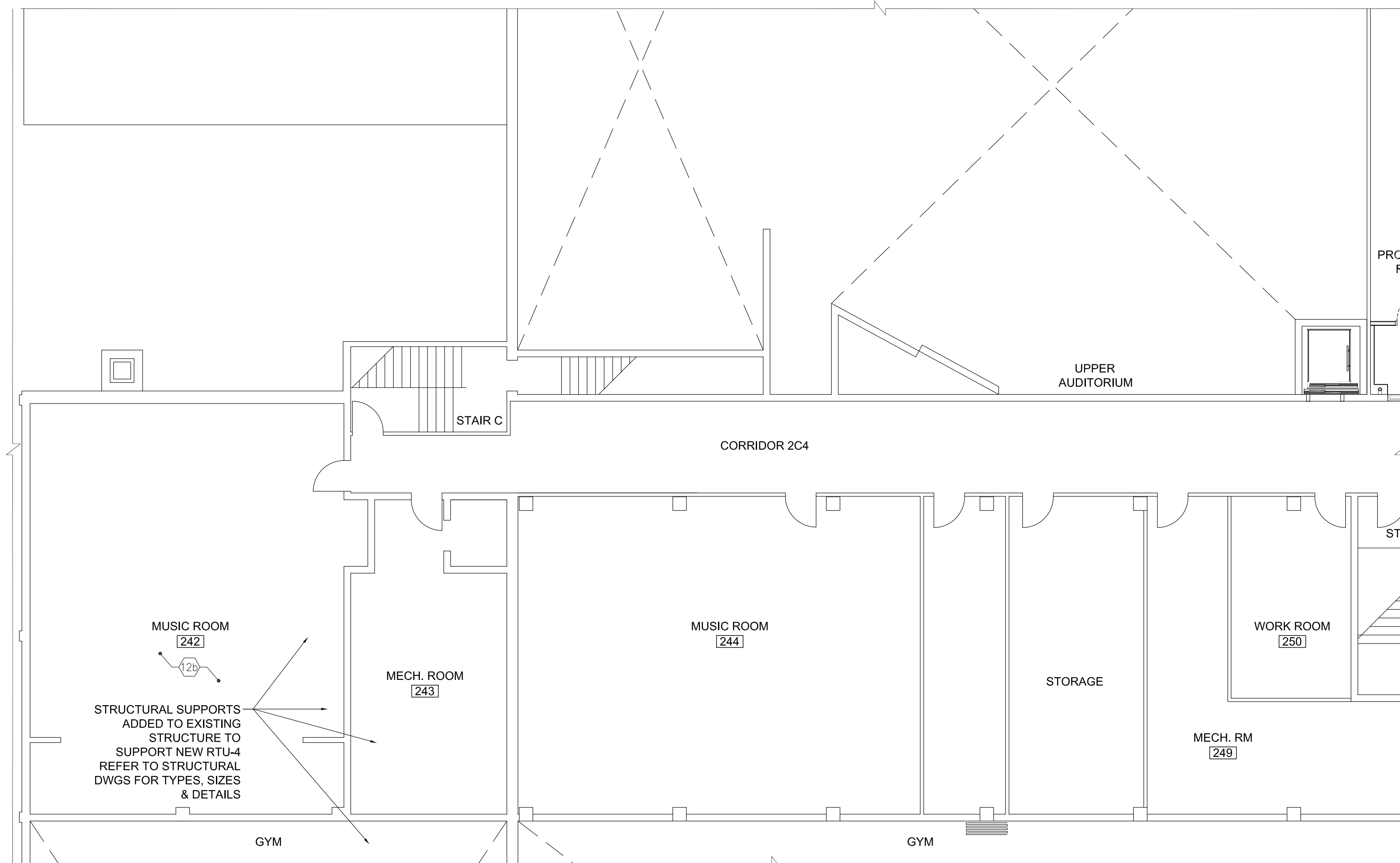
| | | |
|------|--|---|
| PW1 | | 16mm GB-AR VAPOUR RETARDER 92mm METAL STUDS @ 400 O.C. WITH 75mm BATT INS. AIR BARRIER SHEET MEMBRANE EXISTING BLOCK |
| PW2 | | 16mm GB-AR 152mm METAL STUDS @ 400 O.C. WITH EXISTING BLOCK |
| PW3 | | 16mm GB-AR 64mm METAL STUDS @ 400 O.C. WITH EXISTING BLOCK |
| PW4 | | 16MM GB-AR ON 22MM FURRING HAT SECTIONS @400MM O.C. MAX. ON EXISTING WALL |
| PW5 | | 16mm GB-AR LAMINATED ON EXST. BLOCK |
| PW6 | | 16MM GB-AR ON 19x38 WOOD BLOCKING ON EXISTING STEEL COLUMN |
| PW7 | | ULC W446: 1 HR RATED WALL (System F-th) 16mm GB-FR 102mm C-T SHAPED STUDS (400C-33 @ 60 25mm GB-SL |
| PW8 | | 190mm CONCRETE BLOCK |
| PW9 | | 140mm CONCRETE BLOCK |
| PW10 | | 90mm CONCRETE BLOCK- 100% SOLID |

- 1 NEW FLOOR FINISH AND BASE. INCLUDE SELF LEVELING COMPOUND TO SUIT NEW FLOOR INSTALLATION. TERMINATE FLOORING UNDER CENTERLINE OF DIVIDING DOORS UNLESS OTHERWISE NOTED OR SHOWN.
- 1a PATCH AND MAKE GOOD CONC. SLAB TO RECEIVE NEW FLOOR FINISH AFTER MECH. CONNECTIONS COMPLETED. REFER TO MECH. DWGS FOR EXTENT OF WORK AFFECTING EX. CONC. SLAB (TYP.)
- 2 NEW PW1 WALL BELOW WINDOW SILL.
- 2a NEW PW4 WALL BELOW WINDOW SILL.
- 3 NEW CHASE UP TO U/S OF SLAB FOR MECH. SERVICES.
- 4 NEW PW3 WALL UP TO U/S OF SLAB.
- 5 PROVIDE WOOD FRAMING WITH PLYWOOD (915 x 915mm) TO SUPPORT PROJECT INSTALLATION. COORDINATE LOCATION W/ INTERIOR ELEVATIONS AND ELECTRICAL DWGS
- 6 NEW PW6 WALL UP TO U/S OF BEAM ABOVE
- 7 NEW MOVABLE MILLWORK MD-01
- 8 PROVIDE NEW WINDOW SILL - 19mm PLAM W/3mm PVC. EDGE ON WOOD BLOCKING AROUND NEW AND EXISTING WINDOWS & COLUMN PROFILES.
- 9 NEW MECH. UNIT VENTILATOR. COORDINATE LOCATION W/ MECH. & ELEC. DWGS ALONG WITH REQUIRED SERVICE CONNECTIONS.
- 10 PAINT ALL WALLS COMPLETE. PATCH AND MAKE GOOD ALL BLOCK AS REQ'D PRIOR TO PAINTING (REMOVED MILLWORK ETC).
- 11 CREATE, PATCH AND MAKE GOOD WITH 'PW9' INFILL IN EXISTING WALL. FOR NEW MECH. DUCT PENETRATIONS WITH STEEL LINTEL. COORDINATE W/ MECH. AND STRUCT. DWGS. REFER TO TYP. SECTION DETAIL. 9/A501
- 12 NEW LIGHT FIXTURES. REFER TO A300- A305 COORDINATE W/ ELEC. DWGS
- 12a MAKE GOOD EXISTING AC CEILING AFTER COMPLETION OF MECH CONNECTIONS. COORDINATE W/ MECH. & ELEC. DWGS FOR ADDITIONAL REQUIREMENTS.
- 12b NEW CEILING. REFER TO A300- A305 FOR TYPE AND DETAIL OF CEILING. COORDINATE W/ ELEC. DWGS
- 13 INSTALL NEW MANUAL WINDOW SHADES ON ALL WINDOWS
- 14 FILL IN. PATCH AND MAKE GOOD EXISTING EXPOSED CONCRETE CEILING. PAINT ALL CEILINGS COMPLETE. PATCH AND MAKE GOOD ALL EXISTING EXPOSED SURFACE AS REQ'D PRIOR TO PAINTING (REMOVED LIGHT FIXTURES, CONDUITS ETC).



| | | | |
|-----|--|----|--|
| | NEW FLOOR FINISH AND BASE. INCLUDE SELF LEVELING COMPOUND TO SUIT NEW FLOOR INSTALLATION. TERMINATE FLOORING UNDER CENTERLINE OF DIVIDING DOORS UNLESS OTHERWISE NOTED OR SHOWN. | 15 | EXISTING DUCT PENETRATIONS. ASSUME 3 INFILLS PER CLASSROOM AND 4 PER SCIENCE LABS |
| 1a | PATCH AND MAKE GOOD CONC. SLAB TO RECEIVE NEW FLOOR FINISH AFTER MECH. CONNECTIONS COMPLETED. REFER TO MECH. DWGS FOR EXTENT OF WORK AFFECTING EX. CONC. SLAB (TYP.) | 16 | NEW MECH. DUCT FLOOR PENETRATION. REFER TO MECH. AND STRUCT. DWGS FOR SCOPE COORDINATION. REFER TO TYP. SECTION DETAILS ON DWG A502 |
| 2 | NEW PW1 WALL BELOW WINDOW SILL. | 17 | NEW METAL LOCKERS WITH FULL HEIGHT METAL TOP AND END TRIMS TO MATCH EXISTING COLOURS |
| 2a | NEW PW4 WALL BELOW WINDOW SILL. | 18 | NEW FULL HEIGHT WOOD TRIM WITH WOOD BLOCKING TO FORM A FINISHED EDGE FOR RETAINED EXISTING WALL FINISHES |
| 3 | NEW CHASE UP TO U/S OF SLAB FOR MECH. SERVICES. | 19 | NEW MILLWORK END PANEL TO FORM A FINISHED EDGE FOR RETAINED EXISTING MILLWORK |
| 4 | NEW PW3 WALL UP TO U/S OF SLAB. | 20 | SC01 TO REPLACE EXST. WINDOW PANE WITH INSULATED METAL PANEL FOR NEW MECH. LOUVER IN EXISTING EXTERIOR WINDOW FRAMES. TOTAL 13 WINDOW PANES - ASSUME EACH PANE SIZE 650 x 1900mm. VERIFY DIMENSIONS ON SITE BEFORE FABRICATION. COORDINATE CUTOUT SIZES WITH SC03. |
| 5 | PROVIDE WOOD FRAMING WITH PLYWOOD (915 x 915mm) TO SUPPORT PROJECTOR INSTALLATION. COORDINATE LOCATION W/ INTERIOR ELEVATIONS AND ELECTRICAL DWGS | 21 | SC01 TO PROVIDE NEW METAL TRIM AT EXISTING METAL WALL PANEL CLADDING TO COMPLETE MECH. LOUVER INSTALLATION. VERIFY DIMENSIONS ON SITE BEFORE FABRICATION. COORDINATE CUTOUT SIZES WITH SC03. |
| 6 | NEW PW6 WALL UP TO U/S OF BEAM ABOVE | 22 | SC01 TO INCLUDE TEMPORARY SUPPORT FOR ALL EXISTING WINDOWS (IN 1963 WING) WHILE COLUMN CLADDING WORK IN PROGRESS. ALSO TO INCLUDE FOR CAULK AND SEAL FOR THE SAME ONCE COLUMN CLADDING IS COMPLETE |
| 7 | NEW MOVABLE MILLWORK MD-01 | 23 | NEW METAL LOCKERS ON EXISTING CONC. BASE WITH NEW TOP PANEL AND END TRIMS. VERIFY DIMENSIONS ON SITE BEFORE FABRICATION. |
| 8 | PROVIDE NEW WINDOW SILL - 19mm PLAM W/3mm PVC EDGE ON WOOD BLOCKING AROUND NEW AND EXISTING WINDOWS & COLUMN PROFILES. | | |
| 9 | NEW MECH. UNIT VENTILATOR. COORDINATE LOCATION W/ MECH. & ELEC. DWGS ALONG WITH REQUIRED SERVICE CONNECTIONS. | | |
| 10 | PAINT ALL WALLS COMPLETE. PATCH AND MAKE GOOD ALL BLOCK AS REQ'D PRIOR TO PAINTING (REMOVED MILLWORK ETC). | | |
| 11 | CREATE, PATCH AND MAKE GOOD WITH 'PW9' INFILL IN EXISTING WALL FOR NEW MECH. DUCT PENETRATIONS WITH STEEL LINTEL. COORDINATE W/ MECH. AND STRUCT. DWGS. REFER TO TYP. SECTION DETAIL 9/A501 | | |
| 12 | NEW LIGHT FIXTURES. REFER TO A300- A305 COORDINATE W/ ELEC. DWGS | | |
| 12a | MAKE GOOD EXISTING ACT CEILING AFTER COMPLETION OF MECH CONNECTIONS. COORDINATE W/ MECH. & ELEC. DWGS FOR ADDITIONAL REQUIREMENTS. | | |
| 12b | NEW CEILING. REFER TO A300- A305 FOR TYPE AND DETAIL OF CEILING. COORDINATE W/ ELEC. DWGS | | |
| 13 | INSTALL NEW MANUAL WINDOW SHADES ON ALL WINDOWS | | |
| 14 | FILL IN, PATCH AND MAKE GOOD EXISTING EXPOSED CONCRETE CEILING. PAINT ALL CEILINGS COMPLETE. PATCH AND MAKE GOOD ALL EXISTING EXPOSED SURFACE AS REQ'D PRIOR TO PAINTING (REMOVED LIGHT FIXTURES, CONDUITS ETC). | | |





2 SECOND FLOOR PARTIAL RENOVATION PLAN (MUSIC ROOMS AND MECH. ROOMS)
A212 1:100

INTERIOR PARTITION WALL TYPES

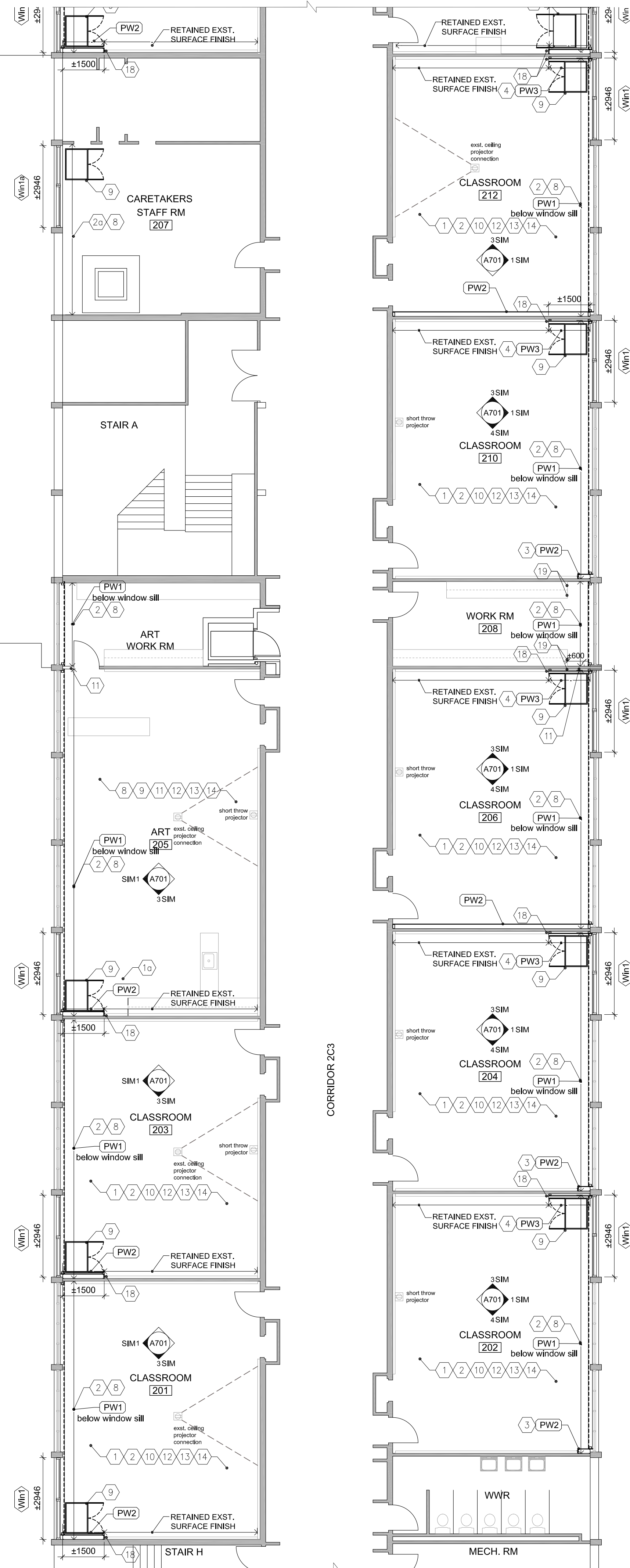
- PW1 16mm GB-AR
VAPOUR RETARDER
92mm METAL STUDS @ 400 O.C. WITH
75mm BATT INS.
AIR BARRIER SHEET MEMBRANE
EXISTING BLOCK
- PW2 16mm GB-AR
152mm METAL STUDS @ 400 O.C. WITH
- PW3 16mm GB-AR
64mm METAL STUDS @ 400 O.C. WITH
- PW4 16MM GB-AR
ON 22MM FURRING HAT SECTIONS
@400MM O.C. MAX.
ON EXISTING WALL
- PW5 16mm GB-AR LAMINATED ON EXST. BLOCK
- PW6 16MM GB-AR
ON 19x38 WOOD BLOCKING
ON EXISTING STEEL COLUMN
- PW7 ULC W446: 1 HR RATED WALL (System F-1h)
16mm GB-FR
102mm C-T SHAPED STUDS (400CT-33 @ 600 O.C.) W/
25mm GB-SL
- PW8 190mm CONCRETE BLOCK
- PW9 140mm CONCRETE BLOCK
- PW10 90mm CONCRETE BLOCK- 100% SOLID

ABBREVIATIONS

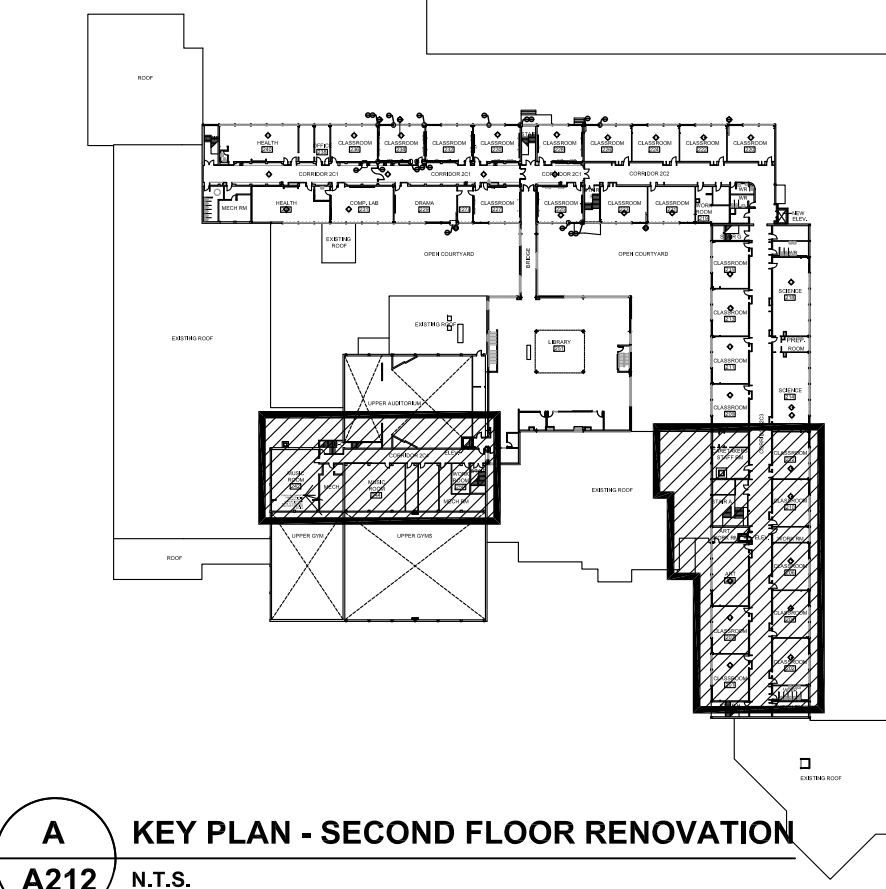
- AL/ALUM - ALUMINUM
AFF - ABOVE FINISH FLOOR
AVBSM - AIR VAPOUR BARRIER SHEET
MEMBRANE
C.J - CONTROL JOINT
CMU - CONCRETE MASONRY UNIT
CONT - CONTINUOUS
C/W - COMPLETE WITH
DIA. - DIAMETER
E.J. - EXPANSION JOINT
EX/EXST - EXISTING
FEC - FIRE EXTINGUISHER CABINET.
FULLY RECESSED - TYP. SEE MECH.
DWGS
FRR - FIRE RESISTANT RATING
GB - GYPSUM BOARD
GB-AR - ABUSE- RESISTANT GYPSUM BOARD
GB-BB - BACKING BOARD GYPSUM BOARD
GB-FR - FIRE- RATED GYPSUM BOARD
GB-SB - CEILING/ SOFFIT GYPSUM BOARD
GB-SL - SHAFT LINER GYPSUM BOARD
GL - GLAZING
GSB - GYPSUM SHEATHING BOARD
INS - INSULATION
LOK - METAL LOCKER
MB - MARKER BOARD
MD - MILLWORK DETAIL
MIR - MIRROR
MIRR - MIRRORRED
MWP - METAL WALL PANEL
NIC - NOT IN CONTRACT
NTS - NOT TO SCALE
O/ - OVER
OD - OUTER DIAMETER
PREFIN. - PREFINISHED
PT. PLY - PRESSURE TREATED PLYWOOD
SIM - SIMILAR
SS - STAINLESS STEEL
TB - TACK BOARD
UNO - UNLESS OTHERWISE NOTED
U/S - UNDERSIDE
W/ - WITH

RENOVATION NOTES

- 1 NEW FLOOR FINISH AND BASE, INCLUDE SELF LEVELING COMPOUND TO SUIT NEW FLOOR INSTALLATION. TERMINATE FLOORING UNDER CENTERLINE OF DIVIDING DOORS UNLESS OTHERWISE NOTED OR SHOWN.
- 1a PATCH AND MAKE GOOD CONC. SLAB TO RECEIVE NEW FLOOR FINISH AFTER MECH. CONNECTIONS COMPLETED. REFER TO MECH. DWGS FOR EXTENT OF WORK AFFECTING EX. CONC. SLAB (TYP.)
- 2 NEW PW1 WALL BELOW WINDOW SILL.
- 2a NEW PW4 WALL BELOW WINDOW SILL.
- 3 NEW CHASE UP TO U/S OF SLAB FOR MECH. SERVICES.
- 4 NEW PW3 WALL UP TO U/S OF SLAB.
- 5 PROVIDE WOOD FRAMING WITH PLYWOOD (915 x 915mm) TO SUPPORT PROJECTOR INSTALLATION. COORDINATE LOCATION W/ INTERIOR ELEVATIONS AND ELECTRICAL DWGS
- 6 NEW PW6 WALL UP TO U/S OF BEAM ABOVE
- 7 NEW MOVABLE MILLWORK MD-01
- 8 PROVIDE NEW WINDOW SILL - 19mm PLAM W/3mm PVC EDGE ON WOOD BLOCKING AROUND NEW AND EXISTING WINDOWS & COLUMN PROFILES.
- 9 NEW MECH. UNIT VENTILATOR. COORDINATE LOCATION W/ MECH. & ELEC. DWGS ALONG WITH REQUIRED SERVICE CONNECTIONS.
- 10 PAINT ALL WALLS COMPLETE. PATCH AND MAKE GOOD ALL BLOCK AS REQ'D PRIOR TO PAINTING (REMOVED MILLWORK ETC).
- 11 CREATE, PATCH AND MAKE GOOD WITH 'PW9' INFILL IN EXISTING WALL FOR NEW MECH. DUCT PENETRATIONS WITH STEEL LINTEL. COORDINATE W/ MECH. AND STRUCT. DWGS. REFER TO TYP. SECTION DETAIL 9/A501
- 12 NEW LIGHT FIXTURES. REFER TO A300- A305 COORDINATE W/ ELEC. DWGS
- 12a MAKE GOOD EXISTING ACT CEILING AFTER COMPLETION OF MECH CONNECTIONS. COORDINATE W/ MECH. & ELEC. DWGS FOR ADDITIONAL REQUIREMENTS.
- 12b NEW CEILING. REFER TO A300- A305 FOR TYPE AND DETAIL OF CEILING. COORDINATE W/ ELEC. DWGS
- 13 INSTALL NEW MANUAL WINDOW SHADES ON ALL WINDOWS
- 14 FILL IN, PATCH AND MAKE GOOD EXISTING EXPOSED CONCRETE CEILING. PAINT ALL CEILINGS COMPLETE. PATCH AND MAKE GOOD ALL EXISTING EXPOSED SURFACE AS REQ'D PRIOR TO PAINTING (REMOVED LIGHT FIXTURES, CONDUITS ETC).
- 15 NEW CMU 'PW8' INFILL (600x 400mm) TO BLOCK OFF EXISTING DUCT PENETRATIONS. ASSUME 3 INFILLS PER CLASSROOM AND 4 PER SCIENCE LABS
- 16 NEW MECH. DUCT FLOOR PENETRATION. REFER TO MECH. AND STRUCT. DWGS FOR SCOPE COORDINATION. REFER TO TYP. SECTION DETAILS ON DWG A502
- 17 NEW METAL LOCKERS WITH FULL HEIGHT METAL TOP AND END TRIMS TO MATCH EXISTING COLOURS
- 18 NEW FULL HEIGHT WOOD TRIM WITH WOOD BLOCKING TO FORM A FINISHED EDGE FOR RETAINED EXISTING WALL FINISHES
- 19 NEW MILLWORK END PANEL TO FORM A FINISHED EDGE FOR RETAINED EXISTING MILLWORK
- 20 SC01 TO REPLACE EXST. WINDOW PANE WITH INSULATED METAL PANEL FOR NEW MECH. LOUVER IN EXISTING EXTERIOR WINDOW FRAMES. TOTAL 13 WINDOW PANES - ASSUME EACH PANE SIZE 650 x 1900mm. VERIFY DIMENSIONS ON SITE BEFORE FABRICATION. COORDINATE CUTOUT SIZES WITH SC03.
- 21 SC01 TO PROVIDE NEW METAL TRIM AT EXISTING METAL WALL PANEL CLADDING TO COMPLETE MECH. LOUVER INSTALLATION. VERIFY DIMENSIONS ON SITE BEFORE FABRICATION. COORDINATE CUTOUT SIZES WITH SC03.
- 22 SC01 TO INCLUDE TEMPORARY SUPPORT FOR ALL EXISTING WINDOWS (IN 1956 WING) WHILE COLUMN CLADDING WORK IN PROGRESS. ALSO TO INCLUDE FOR CAULK AND SEAL FOR THE SAME ONCE COLUMN CLADDING IS COMPLETE
- 23 NEW METAL LOCKERS ON EXISTING CONC. BASE WITH NEW TOP PANEL AND END TRIMS. VERIFY DIMENSIONS ON SITE BEFORE FABRICATION.



1 1956 WING - SECOND FLOOR PARTIAL RENOVATION PLAN (CLASSROOMS, ART ROOM AND SCIENCE LABS)
A212 1:100



A KEY PLAN - SECOND FLOOR RENOVATION
A212 N.T.S.

Halton District School Board

2050 Guelph Line
Burlington, Ontario

NELSON HIGH SCHOOL
RENOVATIONS

4181 NEW STREET
Burlington, Ontario

Architect

sn/der

Snyder Architects Inc.
100 Broadview Ave, Suite 301, Toronto, ON M4M 3B3
Tel: 416-966-5444
www.snyderarchitects.ca

Consultants

Mechanical and Electrical Consultants

RDZ Engineering Ltd

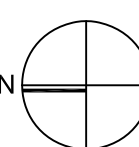
30 Pennsylvania Avenue, Unit 17A
Vaughan, Ontario, L4K 4A5
Tel: 416-317-8804

Structural Consultants

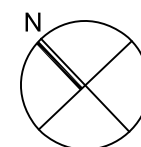
Kalos Engineering Inc.

300 York Boulevard,
Hamilton, Ontario, L8R 3K6
Tel: 905-333-9119

Key Plan N.T.S.



Project North



True North

| No. | Revisions | Date |
|-----|-------------------|------------|
| | | |
| | | |
| | | |
| | | |
| | | |
| | | |
| | | |
| | | |
| | | |
| | | |
| 2 | ISSUED FOR BIDS | 2024 05 13 |
| 1 | ISSUED FOR PERMIT | 2024 04 29 |
| No. | Issue | Date |

General Contractor shall check and verify all dimensions and report all errors and omissions to the Architect. Do not scale the drawings. Drawings shall not be used for construction purposes until issued by the Architect for construction.



Drawing Title:

SECOND FLOOR PARTIAL
RENOVATION PLAN

Scale: 1:100 Date: 12/04/2023

Drawn by: MS Checked by:

Job No. Drawing No.

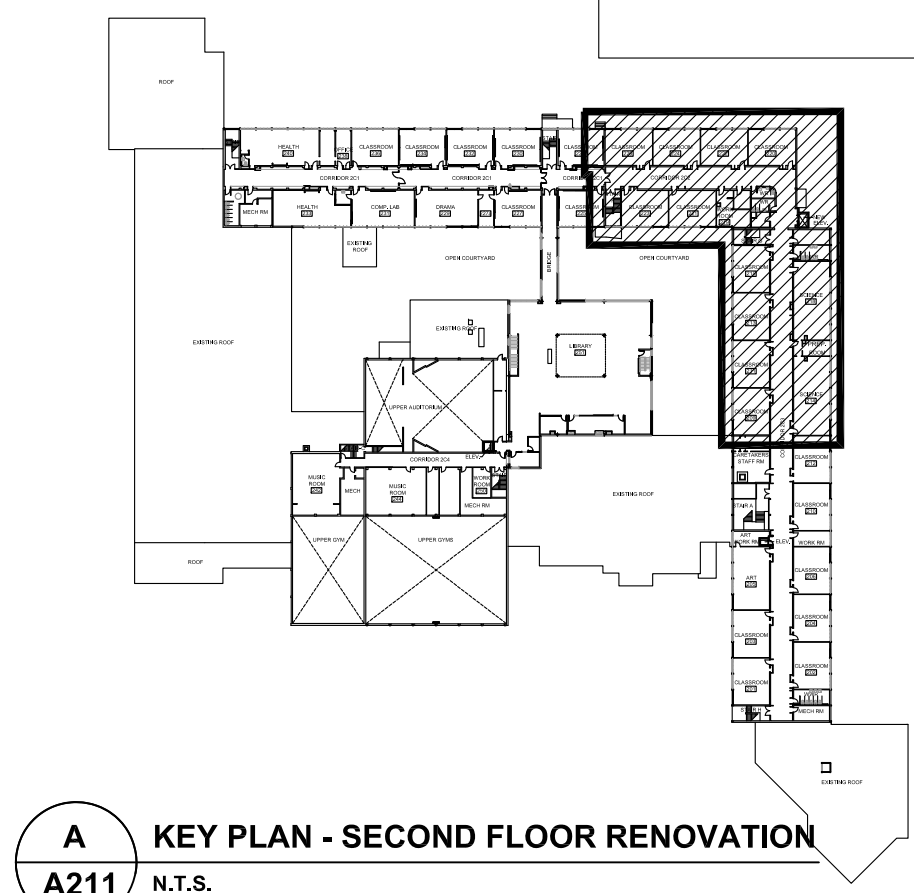
2323

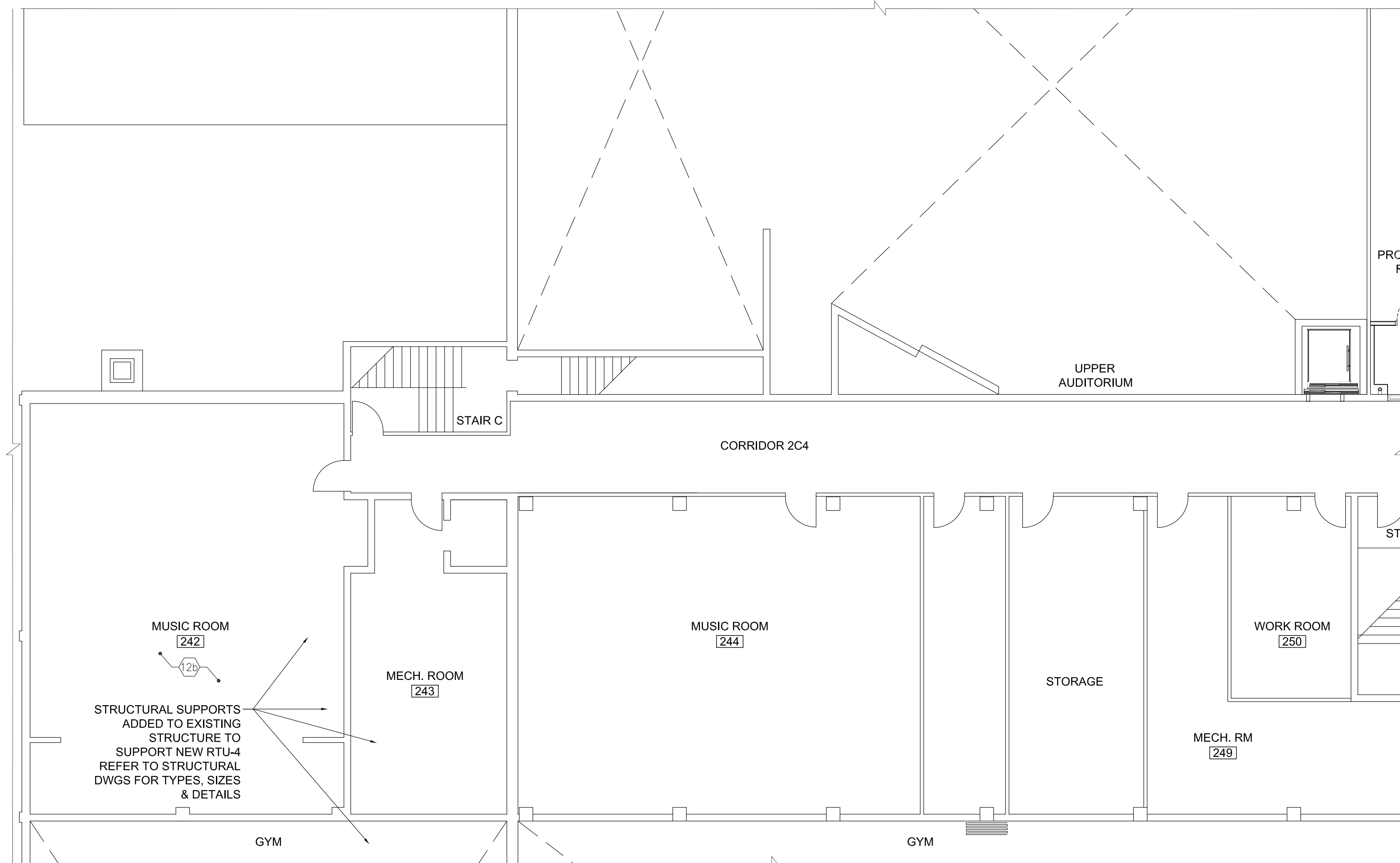
A 211





| | | | |
|-----|--|----|--|
| | NEW FLOOR FINISH AND BASE. INCLUDE SELF LEVELING COMPOUND TO SUIT NEW FLOOR INSTALLATION. TERMINATE FLOORING UNDER CENTERLINE OF DIVIDING DOORS UNLESS OTHERWISE NOTED OR SHOWN. | 15 | EXISTING DUCT PENETRATIONS. ASSUME 3 INFILLS PER CLASSROOM AND 4 PER SCIENCE LABS |
| 1a | PATCH AND MAKE GOOD CONC. SLAB TO RECEIVE NEW FLOOR FINISH AFTER MECH. CONNECTIONS COMPLETED. REFER TO MECH. DWGS FOR EXTENT OF WORK AFFECTING EX. CONC. SLAB (TYP.) | 16 | NEW MECH. DUCT FLOOR PENETRATION. REFER TO MECH. AND STRUCT. DWGS FOR SCOPE COORDINATION. REFER TO TYP. SECTION DETAILS ON DWG A502 |
| 2 | NEW PW1 WALL BELOW WINDOW SILL. | 17 | NEW METAL LOCKERS WITH FULL HEIGHT METAL TOP AND END TRIMS TO MATCH EXISTING COLOURS |
| 2a | NEW PW4 WALL BELOW WINDOW SILL. | 18 | NEW FULL HEIGHT WOOD TRIM WITH WOOD BLOCKING TO FORM A FINISHED EDGE FOR RETAINED EXISTING WALL FINISHES |
| 3 | NEW CHASE UP TO U/S OF SLAB FOR MECH. SERVICES. | 19 | NEW MILLWORK END PANEL TO FORM A FINISHED EDGE FOR RETAINED EXISTING MILLWORK |
| 4 | NEW PW3 WALL UP TO U/S OF SLAB. | 20 | SC01 TO REPLACE EXST. WINDOW PANE WITH INSULATED METAL PANEL FOR NEW MECH. LOUVER IN EXISTING EXTERIOR WINDOW FRAMES. TOTAL 13 WINDOW PANES - ASSUME EACH PANE SIZE 650 x 1900mm. VERIFY DIMENSIONS ON SITE BEFORE FABRICATION. COORDINATE CUTOUT SIZES WITH SC03. |
| 5 | PROVIDE WOOD FRAMING WITH PLYWOOD (915 x 915mm) TO SUPPORT PROJECTOR INSTALLATION. COORDINATE LOCATION W/ INTERIOR ELEVATIONS AND ELECTRICAL DWGS | 21 | SC01 TO PROVIDE NEW METAL TRIM AT EXISTING METAL WALL PANEL CLADDING TO COMPLETE MECH. LOUVER INSTALLATION. VERIFY DIMENSIONS ON SITE BEFORE FABRICATION. COORDINATE CUTOUT SIZES WITH SC03. |
| 6 | NEW PW6 WALL UP TO U/S OF BEAM ABOVE | 22 | SC01 TO INCLUDE TEMPORARY SUPPORT FOR ALL EXISTING WINDOWS (IN 1963 WING) WHILE COLUMN CLADDING WORK IN PROGRESS. ALSO TO INCLUDE FOR CAULK AND SEAL FOR THE SAME ONCE COLUMN CLADDING IS COMPLETE |
| 7 | NEW MOVABLE MILLWORK MD-01 | 23 | NEW METAL LOCKERS ON EXISTING CONC. BASE WITH NEW TOP PANEL AND END TRIMS. VERIFY DIMENSIONS ON SITE BEFORE FABRICATION. |
| 8 | PROVIDE NEW WINDOW SILL - 19mm PLAM W/3mm PVC EDGE ON WOOD BLOCKING AROUND NEW AND EXISTING WINDOWS & COLUMN PROFILES. | | |
| 9 | NEW MECH. UNIT VENTILATOR. COORDINATE LOCATION W/ MECH. & ELEC. DWGS ALONG WITH REQUIRED SERVICE CONNECTIONS. | | |
| 10 | PAINT ALL WALLS COMPLETE. PATCH AND MAKE GOOD ALL BLOCK AS REQ'D PRIOR TO PAINTING (REMOVED MILLWORK ETC). | | |
| 11 | CREATE, PATCH AND MAKE GOOD WITH 'PW9' INFILL IN EXISTING WALL FOR NEW MECH. DUCT PENETRATIONS WITH STEEL LINTEL. COORDINATE W/ MECH. AND STRUCT. DWGS. REFER TO TYP. SECTION DETAIL 9/A501 | | |
| 12 | NEW LIGHT FIXTURES. REFER TO A300- A305 COORDINATE W/ ELEC. DWGS | | |
| 12a | MAKE GOOD EXISTING ACT CEILING AFTER COMPLETION OF MECH CONNECTIONS. COORDINATE W/ MECH. & ELEC. DWGS FOR ADDITIONAL REQUIREMENTS. | | |
| 12b | NEW CEILING. REFER TO A300- A305 FOR TYPE AND DETAIL OF CEILING. COORDINATE W/ ELEC. DWGS | | |
| 13 | INSTALL NEW MANUAL WINDOW SHADES ON ALL WINDOWS | | |
| 14 | FILL IN, PATCH AND MAKE GOOD EXISTING EXPOSED CONCRETE CEILING. PAINT ALL CEILINGS COMPLETE. PATCH AND MAKE GOOD ALL EXISTING EXPOSED SURFACE AS REQ'D PRIOR TO PAINTING (REMOVED LIGHT FIXTURES, CONDUITS ETC). | | |





2 SECOND FLOOR PARTIAL RENOVATION PLAN (MUSIC ROOMS AND MECH. ROOMS)
A212 1:100

INTERIOR PARTITION WALL TYPES

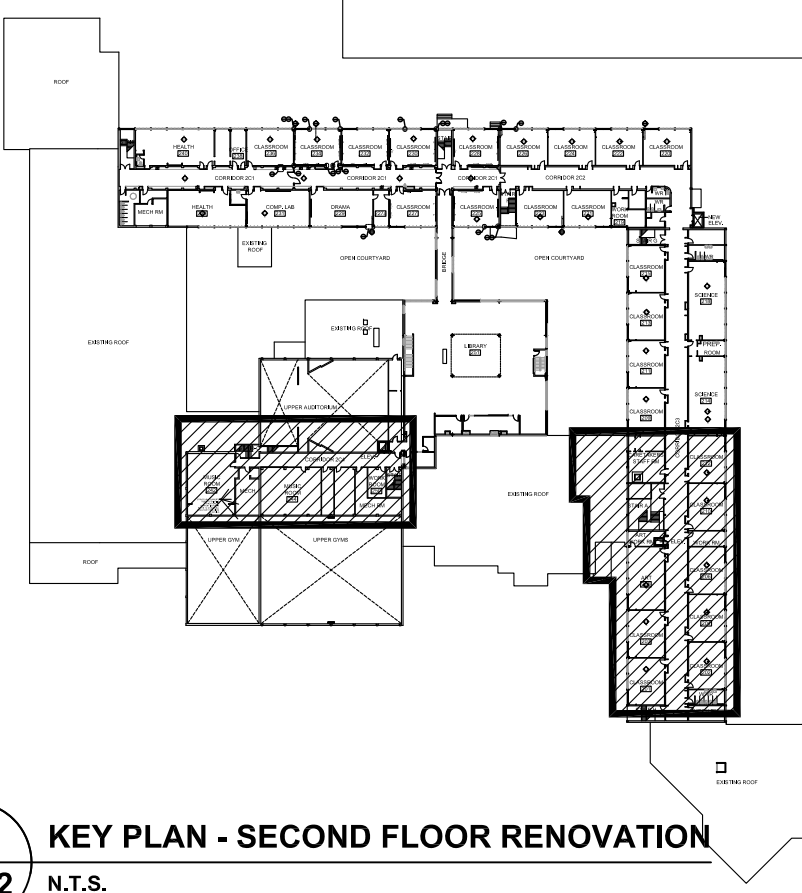
- PW1 16mm GB-AR
VAPOUR RETARDER
92mm METAL STUDS @ 400 O.C. WITH
75mm BATT INS.
AIR BARRIER SHEET MEMBRANE
EXISTING BLOCK
- PW2 16mm GB-AR
152mm METAL STUDS @ 400 O.C. WITH
- PW3 16mm GB-AR
64mm METAL STUDS @ 400 O.C. WITH
- PW4 16MM GB-AR
ON 22MM FURRING HAT SECTIONS
@400MM O.C. MAX.
ON EXISTING WALL
- PW5 16mm GB-AR LAMINATED ON EXST. BLOCK
- PW6 16MM GB-AR
ON 19x38 WOOD BLOCKING
ON EXISTING STEEL COLUMN
- PW7 ULC W446: 1 HR RATED WALL (System F-1h)
16mm GB-FR
102mm C-T SHAPED STUDS (400CT-33 @ 600 O.C.) W/
25mm GB-SL
- PW8 190mm CONCRETE BLOCK
- PW9 140mm CONCRETE BLOCK
- PW10 90mm CONCRETE BLOCK- 100% SOLID

ABBREVIATIONS

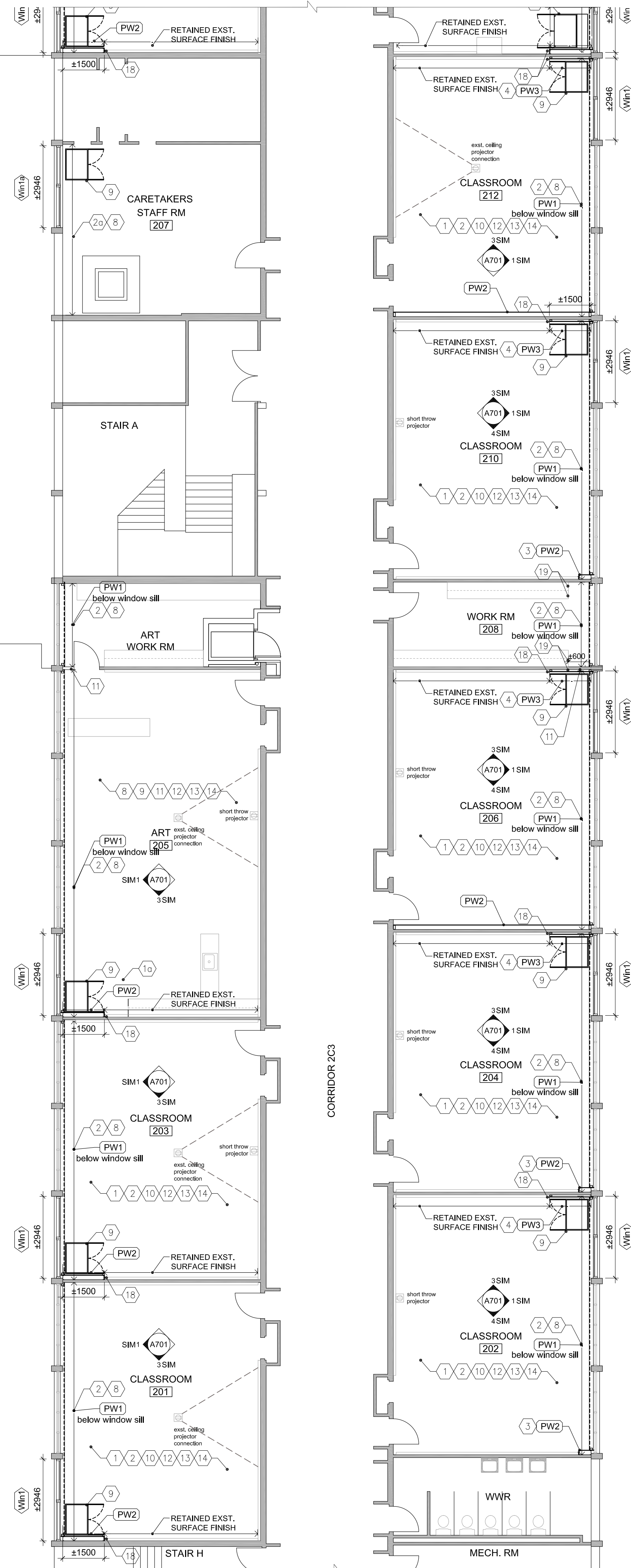
- AL/ALUM - ALUMINUM
AFF - ABOVE FINISH FLOOR
AVBSM - AIR VAPOUR BARRIER SHEET
MEMBRANE
C.J - CONTROL JOINT
CMU - CONCRETE MASONRY UNIT
CONT - CONTINUOUS
C/W - COMPLETE WITH
DIA. - DIAMETER
E.J. - EXPANSION JOINT
EX/EXST - EXISTING
FEC - FIRE EXTINGUISHER CABINET.
FULLY RECESSED - TYP. SEE MECH.
DWGS
FRR - FIRE RESISTANT RATING
GB - GYPSUM BOARD
GB-AR - ABUSE- RESISTANT GYPSUM BOARD
GB-BB - BACKING BOARD GYPSUM BOARD
GB-FR - FIRE- RATED GYPSUM BOARD
GB-SB - CEILING/ SOFFIT GYPSUM BOARD
GB-SL - SHAFT LINER GYPSUM BOARD
GL - GLAZING
GSB - GYPSUM SHEATHING BOARD
INS - INSULATION
LOK - METAL LOCKER
MB - MARKER BOARD
MD - MILLWORK DETAIL
MIR - MIRROR
MIRR - MIRRORRED
MWP - METAL WALL PANEL
NIC - NOT IN CONTRACT
NTS - NOT TO SCALE
O/ - OVER
OD - OUTER DIAMETER
PREFIN. - PREFINISHED
PT. PLY - PRESSURE TREATED PLYWOOD
SIM - SIMILAR
SS - STAINLESS STEEL
TB - TACK BOARD
UNO - UNLESS OTHERWISE NOTED
U/S - UNDERSIDE
W/ - WITH

RENOVATION NOTES

- 1 NEW FLOOR FINISH AND BASE, INCLUDE SELF LEVELING COMPOUND TO SUIT NEW FLOOR INSTALLATION. TERMINATE FLOORING UNDER CENTERLINE OF DIVIDING DOORS UNLESS OTHERWISE NOTED OR SHOWN.
- 1a PATCH AND MAKE GOOD CONC. SLAB TO RECEIVE NEW FLOOR FINISH AFTER MECH. CONNECTIONS COMPLETED. REFER TO MECH. DWGS FOR EXTENT OF WORK AFFECTING EX. CONC. SLAB (TYP.)
- 2 NEW PW1 WALL BELOW WINDOW SILL.
- 2a NEW PW4 WALL BELOW WINDOW SILL.
- 3 NEW CHASE UP TO U/S OF SLAB FOR MECH. SERVICES.
- 4 NEW PW3 WALL UP TO U/S OF SLAB.
- 5 PROVIDE WOOD FRAMING WITH PLYWOOD (915 x 915mm) TO SUPPORT PROJECTOR INSTALLATION. COORDINATE LOCATION W/ INTERIOR ELEVATIONS AND ELECTRICAL DWGS
- 6 NEW PW6 WALL UP TO U/S OF BEAM ABOVE
- 7 NEW MOVABLE MILLWORK MD-01
- 8 PROVIDE NEW WINDOW SILL - 19mm PLAM W/3mm PVC EDGE ON WOOD BLOCKING AROUND NEW AND EXISTING WINDOWS & COLUMN PROFILES.
- 9 NEW MECH. UNIT VENTILATOR. COORDINATE LOCATION W/ MECH. & ELEC. DWGS ALONG WITH REQUIRED SERVICE CONNECTIONS.
- 10 PAINT ALL WALLS COMPLETE. PATCH AND MAKE GOOD ALL BLOCK AS REQ'D PRIOR TO PAINTING (REMOVED MILLWORK ETC).
- 11 CREATE, PATCH AND MAKE GOOD WITH 'PW9' INFILL IN EXISTING WALL FOR NEW MECH. DUCT PENETRATIONS WITH STEEL LINTEL. COORDINATE W/ MECH. AND STRUCT. DWGS. REFER TO TYP. SECTION DETAIL 9/A501
- 12 NEW LIGHT FIXTURES. REFER TO A300- A305 COORDINATE W/ ELEC. DWGS
- 12a MAKE GOOD EXISTING ACT CEILING AFTER COMPLETION OF MECH CONNECTIONS. COORDINATE W/ MECH. & ELEC. DWGS FOR ADDITIONAL REQUIREMENTS.
- 12b NEW CEILING. REFER TO A300- A305 FOR TYPE AND DETAIL OF CEILING. COORDINATE W/ ELEC. DWGS
- 13 INSTALL NEW MANUAL WINDOW SHADES ON ALL WINDOWS
- 14 FILL IN, PATCH AND MAKE GOOD EXISTING EXPOSED CONCRETE CEILING. PAINT ALL CEILINGS COMPLETE. PATCH AND MAKE GOOD ALL EXISTING EXPOSED SURFACE AS REQ'D PRIOR TO PAINTING (REMOVED LIGHT FIXTURES, CONDUITS ETC).
- 15 NEW CMU 'PW8' INFILL (600x 400mm) TO BLOCK OFF EXISTING DUCT PENETRATIONS. ASSUME 3 INFILLS PER CLASSROOM AND 4 PER SCIENCE LABS
- 16 NEW MECH. DUCT FLOOR PENETRATION. REFER TO MECH. AND STRUCT. DWGS FOR SCOPE COORDINATION. REFER TO TYP. SECTION DETAILS ON DWG A502
- 17 NEW METAL LOCKERS WITH FULL HEIGHT METAL TOP AND END TRIMS TO MATCH EXISTING COLOURS
- 18 NEW FULL HEIGHT WOOD TRIM WITH WOOD BLOCKING TO FORM A FINISHED EDGE FOR RETAINED EXISTING WALL FINISHES
- 19 NEW MILLWORK END PANEL TO FORM A FINISHED EDGE FOR RETAINED EXISTING MILLWORK
- 20 SC01 TO REPLACE EXST. WINDOW PANE WITH INSULATED METAL PANEL FOR NEW MECH. LOUVER IN EXISTING EXTERIOR WINDOW FRAMES. TOTAL 13 WINDOW PANES - ASSUME EACH PANE SIZE 650 x 1900mm. VERIFY DIMENSIONS ON SITE BEFORE FABRICATION. COORDINATE CUTOUT SIZES WITH SC03.
- 21 SC01 TO PROVIDE NEW METAL TRIM AT EXISTING METAL WALL PANEL CLADDING TO COMPLETE MECH. LOUVER INSTALLATION. VERIFY DIMENSIONS ON SITE BEFORE FABRICATION. COORDINATE CUTOUT SIZES WITH SC03.
- 22 SC01 TO INCLUDE TEMPORARY SUPPORT FOR ALL EXISTING WINDOWS (IN 1956 WING) WHILE COLUMN CLADDING WORK IN PROGRESS. ALSO TO INCLUDE FOR CAULK AND SEAL FOR THE SAME ONCE COLUMN CLADDING IS COMPLETE
- 23 NEW METAL LOCKERS ON EXISTING CONC. BASE WITH NEW TOP PANEL AND END TRIMS. VERIFY DIMENSIONS ON SITE BEFORE FABRICATION.



A KEY PLAN - SECOND FLOOR RENOVATION
A212 N.T.S.



1 1956 WING - SECOND FLOOR PARTIAL RENOVATION PLAN (CLASSROOMS, ART ROOM AND SCIENCE LABS)
A212 1:100

Halton District School Board

2050 Guelph Line
Burlington, Ontario

NELSON HIGH SCHOOL
RENOVATIONS

4181 NEW STREET
Burlington, Ontario

Architect

sn/der

Snyder Architects Inc.
100 Broadview Ave, Suite 301, Toronto, ON M4M 3B3
Tel: 416-966-5444
www.snyderarchitects.ca

Consultants

Mechanical and Electrical Consultants

RDZ Engineering Ltd

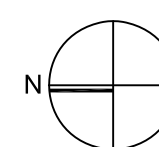
30 Pennsylvania Avenue, Unit 17A
Vaughan, Ontario, L4K 4A5
Tel: 416-317-8804

Structural Consultants

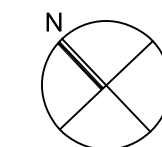
Kalos Engineering Inc.

300 York Boulevard,
Hamilton, Ontario, L8R 3K6
Tel: 905-333-9119

Key Plan N.T.S.



Project North



True North

| No. | Revisions | Date |
|-----|-------------------|------------|
| | | |
| | | |
| | | |
| | | |
| | | |
| | | |
| | | |
| | | |
| | | |
| | | |
| 2 | ISSUED FOR BIDS | 2024 05 13 |
| 1 | ISSUED FOR PERMIT | 2024 04 29 |
| No. | Issue | Date |

General Contractor shall check and verify all dimensions and report all errors and omissions to the Architect. Do not scale the drawings. Drawings shall not be used for construction purposes until issued by the Architect for construction.



Drawing Title:

SECOND FLOOR PARTIAL
RENOVATION PLAN

Scale: 1:100 Date: 12/04/2023

Drawn by: MS Checked by:

Job No. Drawing No.

2323

A 211

