

# ELECTRICAL DEMOLITION NOTES

- THE ELECTRICAL CONTRACTOR SHALL, AS PART OF HIS WORK, PERFORM ALL RELATED DEMOLITION, MODIFICATIONS, RELOCATION OF ELECTRICAL DISTRIBUTION AND OTHER EQUIPMENT AND RELATED WORK, INCLUDING NEW WORK NECESSARY TO COMPLETE THE PROJECT.
- ALL EXISTING FIELD CONDITIONS MAY NOT BE SHOWN ON THE DRAWINGS. THE ELECTRICAL CONTRACTOR SHALL VERIFY ALL FIELD CONDITIONS AND DIMENSIONS PRIOR TO SUBMITTING BIDS. REFER TO EXISTING DRAWINGS AND VISIT THE SITE TO DETERMINE THE EXTENT OF THE DEMOLITION AND NEW WORK REQUIRED. REQUEST FOR EXTRA WILL NOT BE CONSIDERED FOR FAILURE BY THE CONTRACTOR TO BECOME FAMILIAR WITH THE EXISTING SITE CONDITIONS.
- THE ELECTRICAL CONTRACTOR SHALL VERIFY ALL TECHNICAL DETAILS OF EQUIPMENT TO BE REMOVED, WHERE THERE IS A DISCREPANCY WITH THE TENDER DOCUMENTS, CONTRACTOR SHALL ENGAGE CONSULTANTS FOR DIRECTIONS. ELECTRICAL CONTRACTOR SHALL MAKE A LIST OF ALL EQUIPMENT TO BE REMOVED. THIS LIST SHALL BE WITH ALL FOLLOWING INFORMATION:
  - MAKE/MODEL#
  - MANUFACTURER
  - TECHNICAL DETAILS
  - LOCATION
 THIS LIST SHALL BE SUBMITTED TO THE OWNER FOR RECORD PURPOSES.
- THE ELECTRICAL CONTRACTOR SHALL NOT DISCONNECT EQUIPMENT AND ELECTRICAL CIRCUITS IN THE RENOVATION AREA OR ANY PART OF THE BUILDING WITHOUT PRIOR NOTIFICATION AND PERMISSION FROM THE OWNER. EXTREME CARE SHALL BE TAKEN TO MINIMIZE DISTURBANCE TO THE SURROUNDING AREA.
- ITEMS REMOVED AND NOT SCHEDULED TO BE RELOCATED SHALL BE OFFERED TO THE OWNER FOR THEIR USE AND IF NOT ACCEPTED BY THE OWNER, THE ELECTRICAL CONTRACTOR SHALL DISPOSE OF THE MATERIAL FROM THE SITE IN ACCORDANCE WITH LOCAL REGULATIONS. THE ELECTRICAL CONTRACTOR SHALL DELIVER ITEMS ACCEPTED BY THE OWNER TO THE DESIGNATED LOCATIONS AS DIRECTED BY THE OWNER.
- IN ALL CASES WHERE WORK IS REMOVED, THE ELECTRICAL CONTRACTOR SHALL PROVIDE ALL NECESSARY MATERIALS, EQUIPMENT AND LABOR TO SUSTAIN OPERATION OF ALL PARTS OF THE SYSTEMS CONNECTING TO OR FROM THE PART REMOVED, COMPLETING ALL WORK IN STRICT ACCORDANCE WITH APPLICABLE CODES.
- ALL WIRING, CABLES AND FEEDERS INCLUDING BOTH CONNECTED TO DEVICES AND EQUIPMENT TO BE DEMOLISHED AND EXISTING THAT WERE ABANDONED IN PLACE SHALL BE REMOVED BACK TO THEIR SOURCES, UNLESS NOTED OTHERWISE. CONDUITS AND/OR WIRING SHALL, WHERE NECESSARY, BE RE-CIRCUIT AROUND THE REMOVED PART, KEEPING OCCUPIED PARTS OF THE BUILDING SYSTEM IN FULL SERVICE.
- ALL EXISTING CONDUITS WHICH HAVE BEEN ABANDONED OR ARE UNUSED SHALL BE REMOVED.
- PROVIDE BLANK METAL COVER PLATES FOR ALL JUNCTION/DEVICE BOXES NO LONGER IN USE THAT ARE EMBEDDED IN FLOOR SLAB OR MASONRY WALLS. PROVIDE PUSHS FOR ALL PANELS WHERE CONDUIT HAS BEEN REMOVED. COVER PLATES SHALL BE PAINTED TO MATCH EXISTING CONDITIONS.
- WHERE REQUIRED COORDINATE WITH THE CONSULTANTS/OWNER FOR EXISTING PARTITIONS TO BE REMOVED TO FACILITATE WORK. DISCONNECT EXISTING BRANCH CIRCUITS SERVICING DEVICES IN PARTITIONS TO BE REMOVED. MAINTAIN CONTINUITY OF CIRCUITS SERVICING EXISTING DEVICES IN OTHER AREAS TO REMAIN.
- LIGHTING FIXTURES: REMOVE LIGHTING FIXTURES AND SWITCH CONTROL WHEN THE FIXTURE TO BE REMOVED IS SERVED BY A CIRCUIT, THAT SUPPLIES FIXTURES IN OTHER AREAS THAT ARE TO REMAIN, THE ELECTRICAL CONTRACTOR SHALL MAINTAIN THE CONTINUITY OF THE CIRCUIT TO THE REMAINING FIXTURES.
- POWER RECEPTACLES: REMOVE RECEPTACLES WHEN THE RECEPTACLE TO BE REMOVED IS SERVED BY A CIRCUIT THAT SUPPLIES RECEPTACLES IN OTHER AREAS, THAT ARE TO REMAIN, THE ELECTRICAL CONTRACTOR SHALL MAINTAIN THE CONTINUITY OF THE CIRCUIT TO THE REMAINING RECEPTACLES.
- FIRE ALARM SYSTEM: COORDINATE AND CONSULT WITH CURRENT F/A SYSTEM SERVICE CONTRACTOR OR THEIR QUALIFIED REPRESENTATIVE FOR ALL FIRE ALARM DEMOLITION AND MODIFICATIONS. OPERATION SHALL BE MAINTAINED OF EXISTING FIRE ALARM SYSTEM SPECIFICALLY AS IT RELATES TO ADJACENT AREAS WHICH ARE NOT INCLUDED IN THE SCOPE OF THIS PROJECT.
- ELECTRICAL CONTRACTOR SHALL PROVIDE UPDATED TYPE WRITTEN PANEL DIRECTORIES FOR ALL PANELS AFFECTED BY THE DEMOLITION AND/OR NEW WORK. CIRCUIT BREAKERS NOT USED FOR NEW WORK SHALL BE LABELED AS SPARE.
- FOR EXISTING DEVICES/CIRCUITRY THAT ARE INDICATED TO BE REMOVED BACK TO POINT OF ORIGIN- THESE ITEMS ARE TO BE REMOVED BACK TO POINT OF ORIGIN UNLESS THERE WILL BE EXISTING DEVICES ON THE SAME CIRCUIT THAT ARE LOCATED OUTSIDE AREA OF WORK THAT ARE TO REMAIN. IN THAT CASE, REMOVE THE EXISTING DEVICES/CIRCUITRY IN AREA OF WORK BACK TO THESE EXISTING DEVICES TO REMAIN. ALL DEVICES/CIRCUITRY IN SURROUNDING AREAS THAT ARE TO REMAIN ARE TO BE KEPT ENERGIZED. FOR REMOVAL OF CONDUIT AND WIRING OUTSIDE OF AREA OF WORK COORDINATE AND SCHEDULE WITH OWNER PRIOR TO PERFORMING WORK.

POWER & DISTRIBUTION SYSTEMS	
	PANELBOARD (SURFACE MOUNT).
	PANELBOARD (RECESSED MOUNT).
	CONTACTOR.
	ENCLOSED BUS ASSEMBLY.
	CABLE TRAY (LADDER OR TROUGH)
	125V, 2-POSITION, MAINTAINED BARREL KEY SWITCH SWITCH EATON CUTLER-HAMMER MODEL MR22-WRS OR APPROVED EQUAL COMPLETE WITH STAINLESS STEEL COVER PLATE. ALL SWITCHES SHALL BE KEYS ALIKE.
	EMERGENCY POWER-OFF PUSHBUTTON (EPO)
RECEPTACLE/DIRECT CONNECTIONS	
	120V, 2P, 3W, 15A DUPLEX (CSA #5 SERIES).
	120V, 2P, 3W, 15A DUPLEX (CSA #5 SERIES) RECEPTACLE WITH USB CHARGING PORTS
	120V, 2P, 3W, 15A DUPLEX (CSA #5 SERIES) RECEPTACLE PRE-WIRED AND FACTORY INSTALLED IN MODULAR WALL SYSTEM
	120V, 2P, 3W, 15A FOUR PLEX (CSA #5 SERIES) RECEPTACLE PRE-WIRED AND FACTORY INSTALLED IN MODULAR WALL SYSTEM
	120V, 2P, 3W, 15A SPLIT TYPE DUPLEX RECEPTACLE.
	120V, 2P, 3W, 15/20A T-SLOT TYPE DUPLEX RECEPTACLE, CSA#5 SERIES. SUBSCRIPT "S" INDICATES SPLIT RECEPTACLE.
	120V, 2P, 3W, 15A FOUR PLEX RECEPTACLE 2. DUPLEXES UNDER COMMON PLATE).
	125V, 2P, 3W SINGLE RECEPTACLE (CSA #5 SERIES).
	125/250V, 3P, 4W SINGLE RECEPTACLE (CSA #14 SERIES).
	250VDC/600VAC, 3P, 4W SINGLE RECEPTACLE (CSA #L17 SERIES).
	120V, 2P, 3W, FLOOR MOUNTED DUPLEX RECEPTACLE (CSA #5 SERIES).
	BENCH RECEPTACLES UNIT.
	SUSPENDED INDUSTRIAL POWER CORD REEL COMPLETE WITH RECEPTACLES. SEE SPECIFICATION 26 27 19 FOR DETAILS.
	1 PHASE, 3W DIRECT CONNECTION (L, N, G) OR (L1, L2, G).
	3 PHASE, 4W DIRECT CONNECTION (L1, L2, L3, G).
	3 PHASE, 5W DIRECT CONNECTION (L1, L2, L3, N, G).
	1 PHASE, 4W DIRECT CONNECTION (L1, L2, N, G).
	POWER AND COMMUNICATION PAC-POLE.
	CEILING SPACE MOUNTED 1 PHASE, 3W DIRECT CONNECTION (L, N, G) FOR HANDS-FREE WASHROOM PLUMBING FIXTURES. REFER TO FLOOR PLANS FOR DETAILS.
	WALL MOUNTED HAND DRYER: COMAC BLAST SERIES, MODEL C-20000000, WHITE FINISH, 120V, 1450 WATTS OR APPROVED EQUALS FROM EXCEL DRYERS, XLERATOR SERIES OR WORLD DRYERS, NOVA SERIES.
	MOUNTING HEIGHTS FROM BOTTOM EDGE OF DRYERS: 1. UNIV. WASHROOMS: 900mm ABOVE FINISHED FLOOR 2. GIRLS CHANGEROOMS: 1120mm ABOVE FINISHED FLOOR 3. BOYS CHANGEROOMS: 1150mm ABOVE FINISHED FLOOR
	NON-METALLIC SURFACE RACEWAY COMPLETE WITH RECEPTACLES AND COMMUNICATION CABLING OUTLETS. SEE FLOOR PLANS FOR TYPES AND QUANTITIES OF RECEPTACLES AND COMMUNICATION CABLING OUTLETS AND EXACT RACEWAY LENGTH. MOUNT AT 450mm AFF TO CENTRE OF RACEWAY UNLESS INDICATED OTHERWISE ON PLANS. SEE SPECIFICATION SECTION 26 27 19 FOR DETAILS. INDICATES VERTICAL RISER ALONG WALL AND EXTENDING MINIMUM OF 100mm ABOVE FINISHED CEILING. INDICATES ONE (1) 15A, 120V DUPLEX RECEPTACLE WITH TWO (2) USB PORTS AND ONE (1) COMMUNICATION CABLE OUTLET COMPLETE WITH TWO (2) CABLES AND JACKS AND FACEPLATE. INDICATES ONE (1) 15A, 120V DUPLEX RECEPTACLE AND ONE (1) COMMUNICATION CABLE OUTLET COMPLETE WITH TWO (1) CABLE AND JACK AND FACEPLATE. INDICATES ONE (1) 15/20A, T-SLOT TYPE 120V DUPLEX RECEPTACLE AND ONE (1) COMMUNICATION CABLE OUTLET COMPLETE WITH TWO (1) CABLE AND JACK AND FACEPLATE.
	OVERHEAD DOOR.
	NOTES 1. DIRECT CONNECTION VOLTAGE INFORMATION INDICATION BY CIRCUIT No. 2. UNLESS NOTED OTHERWISE MOUNTING HEIGHT OF ALL OUTLETS IS 455mm (18") A.F.F. 3. UNLESS NOTED OTHERWISE (E: 30A, 20A) ALL RECEPTACLES/DIRECT CONNECTIONS RATED FOR 15A.
PAGING AND SOUND SYSTEM	
	RECESSED CEILING MOUNTED SPEAKER.
	COMBINATION WALL MOUNTED SPEAKER AND TALK-LISTEN PRIVACY SWITCH.
	SPEAKER MOUNTED IN ROOM MILLWORK/MODULAR CONTROL PANEL.
	RECESSED WALL MOUNTED SPEAKER.
	RECESSED CEILING MOUNTED SPEAKER COMPLETE WITH HANDSFREE MIC. AND INTERCONNECTED TO WALL MOUNTED EMERGENCY PULLCORD ALARM DEVICE.
	SURFACE WALL MOUNTED SPEAKER.
	SURFACE CEILING MOUNTED SPEAKER.
	P.A. CALL SWITCH.
	ADMINISTRATIVE CONSOLE UNIT OUTLET.
	LOCAL VOLUME CONTROLLER.
	AMPLIFIER.
	MICROPHONE OUTLET

FIRE ALARM SYSTEM	
	MANUAL PULL STATION C/W PROTECTIVE 9VDC BATTERY OPERATED LEXAN COVER.
	HEAT DETECTOR, COMBINATION, FIXED 57C AND RATE OF RISE. SUBSCRIPT 'X' INDICATES 88C FIXED TEMPERATURE.
	HEAT DETECTOR, FIXED ONLY (57C) SUBSCRIPT 'X' INDICATES 88C RATING.
	SMOKE DETECTOR, IONIZATION TYPE. SUBSCRIPT "R" INDICATES RELAY BASE.
	120V LOCAL SMOKE ALARM CEILING MOUNTED. IONIZATION TYPE.
	120V LOCAL SMOKE ALARM WITH STROBE.
	CARBON MONOXIDE/DIOXIDE DETECTOR.
	COMBINATION SMOKE/CARBON MONOXIDE/STROBE.
	AIR DUCT TYPE SMOKE DETECTOR.
	REMOTE INDICATING LIGHT. SUBSCRIPT INDICATES FAN SYSTEM.
	FIRE ALARM HORN.
	FIRE ALARM BELL
	FIRE ALARM STROBE
	COMBINATION FIRE HORN/STROBE LIGHT.
	SUPERVISED VALVE - SPRINKLER. SUBSCRIPT 'P' DENOTES STANDPIPE.
	SPRINKLER FLOW SWITCH.
	SPRINKLER LOW PRESSURE SWITCH.
	MAGNETIC DOOR HOLD OPEN DEVICE.
	RECESSED FIRE ALARM SPEAKER (CEILING MOUNTED).
	RECESSED FIRE ALARM SPEAKER AND STROBE (CEILING MOUNTED).
	FIRE ALARM SPEAKER (WALL MOUNTED).
	FIRE ALARM SPEAKER AND STROBE (WALL MOUNTED).
	SURFACE FIRE ALARM SPEAKER (CEILING MOUNTED).
	SURFACE FIRE ALARM SPEAKER AND STROBE (CEILING MOUNTED).
	FIREFIGHTER HANDSET.
	FIRE ALARM ZONE DEMARICATION
	FIRE ALARM ZONE. NUMBER INDICATES ZONE NUMBER.
	FIRE RATED ROLLING COIL DOOR BY GENERAL CONTRACTOR
AUDIO VISUAL SYSTEM	
	SHORT WALL PROJECTOR.
	TELEVISION OUTLET.
COMMUNICATION SYSTEMS	
	COMMUNICATION OUTLET. PROVIDE A SINGLE GANG OUTLET BOX COMPLETE WITH A 27mm (1") CONDUIT AND TWO (2) COMMUNICATION CABLES, JACKS AND FACEPLATE, UNLESS INDICATED OTHERWISE ON PLANS.
	SAME AS ABOVE, EXCEPT FLOOR MOUNTED.
	COMMUNICATION OUTLET INSTALLED IN MODULAR WALL SYSTEM COMPLETE WITH TWO (2) COMMUNICATION CABLES JACKS AND FACEPLATE.
	COMMUNICATION OUTLET INSTALLED IN MODULAR SYSTEM FURNITURE COMPLETE WITH ONE(1) COMMUNICATION CABLE, JACK AND FACEPLATE UNLESS INDICATED OTHERWISE ON PLANS. REFER TO WALL MOUNTED MODULAR SYSTEM FURNITURE POWER AND COMMUNICATION POINT SYMBOL IN THIS ELECTRICAL LEGEND FOR REQUIREMENTS AND DETAILS.
	TELEPHONE - SUBSCRIPT "P" INDICATES PAY TELEPHONE.
	WIRELESS ACCESS POINT
	VIDEO GRAPHIC ARRAY (VGA) OUTLET
	PRINTER CONNECTOR JACK.
CLOCK SYSTEM	
	CLOCK MOUNTED IN ROOM MILLWORK/MODULAR CONTROL PANEL.

SECURITY SYSTEM	
	ELECTRIC DOOR STRIKE, SUPPLIED AND INSTALLED BY DOOR HARDWARE, WIRED BY DIVISION 16 CONTRACTOR.
	SECURITY CONTROL PANEL
	REQUEST TO EXIT BUTTON
	AUTOMATIC DOOR OPERATOR.
	MAGNETIC DOOR LOCK.
	LOW VOLTAGE POWER SUPPLY FOR THE DOOR STRIKE.
	PUSH-TO-LOCK BUTTON.
	KEY PAD.
	CARD READER.
	AUTOMATIC DOOR OPERATOR ACTUATOR.
	EGRESS MOTION DETECTOR.
	AUDIBLE ALARM (BUZZER)
	GLASS BREAK DETECTOR
	SECURITY SYSTEM MONITORING STATION
	PANIC ALARM
	MOTION DETECTOR.
	DOOR/WINDOW CONTACT.
	EMERGENCY CALL FOR ASSISTANCE SYSTEM PUSHBUTTON.
	EMERGENCY CALL FOR ASSISTANCE SYSTEM ANNUNCIATOR WALL MOUNTED DOME LIGHT.
	EMERGENCY CALL FOR ASSISTANCE SYSTEM 120VAC/24VDC POWER SUPPLY
MECHANICAL WIRING SYSTEMS	
	MECHANICAL EQUIPMENT/MOTOR.
	DISCONNECT SWITCH (UNFUSED). SUBSCRIPT INDICATES SIZE. SUBSCRIPT 'N' INDICATES COMPLETE WITH SOLID NEUTRAL.
	DISCONNECT SWITCH (FUSED). SUBSCRIPT INDICATES FUSE RATING. SUBSCRIPT 'N' INDICATES COMPLETE WITH SOLID NEUTRAL.
	MANUAL STARTER COMPLETE WITH PILOT LIGHT.
	MAGNETIC STARTER.
	COMBINATION MAGNETIC STARTER.
	TIME SWITCH.
	THERMOSTAT
	SPEED SWITCH
	GAS SUPPLY SOLENOID VALVE EMERGENCY POWER SHUT-OFF PUSHBUTTON
	CEILING MOUNTED DESTRATIFICATION FAN
TYPICAL CIRCUIT NUMBER IDENTIFICATION	
	"1" INDICATES CIRCUIT NUMBER 1 "BB" INDICATES PANEL "LP-BB"

MISCELLANEOUS ABBREVIATIONS/SUBSCRIPTS/SYMBOLS	
A	- MOUNTING HEIGHT FOR DEVICES ABOVE COUNTER/SINK MILLWORK TO BE 1020mm FROM TOP OF DEVICE TO A.F.F. (UNLESS NOTED OTHERWISE).
3P+N	- 3 POLE & UNSWITCHED NEUTRAL.
AFF	- ABOVE FINISHED FLOOR.
B	- BENCH MOUNTED.
C	- CEILING SPACE MOUNTED.
CL	- CONTROLLED LOAD.
DF	- WATER BOTTLE REFILLING STATION/DRINKING FOUNTAIN.
D/I	- WITH DISCONNECT AND VISIBLE ISOLATION.
EXP/EP	- EXPLOSION PROOF.
F	- FLOOR MOUNTED.
GF	- GROUND FAULT CIRCUIT INTERRUPTER.
H	- HOUSEKEEPING RECEPTACLE.
IG	- WEATHERPROOF TYPE.
MH	- MOUNTING HEIGHT.
NL	- NIGHT LIGHT
S	- SURGE SUPPRESSION TYPE DEVICE.
T	- LOCKING TYPE (TWISTLOCK).
V	- MOUNT IN VERTICAL FACE.
WG	- WIREGUARD.
WP	- WEATHERPROOF TYPE.
Z	- MOUNT 42" (1065mm) A.F.F.
PTZ	- PAN, TILT, ZOOM
E	- EXISTING TO REMAIN.
ER	- EXISTING TO BE RELOCATED.
RE	- RELOCATED AT NEW LOCATION.
N	- EXISTING TO BE REPLACED WITH NEW.
TS	- MOUNTED IN MILLWORK TOE SPACE.
R	- EXISTING TO BE REMOVED.

DRAWING LIST	
DWG No.	DRAWING TITLE
E000	ELECTRICAL SYSTEMS LEGEND DEMO NOTES AND DRAWING LIST
E001	LIGHTING LEGEND AND FIXTURES SCHEDULE
E100	LEVELS 0 AND 1 KEY PLANS
E200	LEVEL 0 & 1 LIGHTING DEMOLITION PLANS
E201	LEVEL 0 & 1 LIGHTING RENOVATION PLANS
E300	LEVEL 0 & 1 POWER & SYSTEMS DEMOLITION PLANS
E301	LEVEL 0 & 1 POWER & SYSTEMS RENOVATION PLANS
ME100	MECHANICAL AND ELECTRICAL SCHEDULES

Client  
**Halton District School Board**  
2050 Guelph Line  
Burlington, Ontario

---

**T.A. BLAKELOCK H.S. RENOVATION**

1160 Rebecca Street, Oakville, ON L6L 1Y9

---

Architect  
**sn/der**  
Snyder Architects Inc.  
100 Broadview Ave. Suite 201, Toronto, ON M4M 3H3  
tel. 416.966.5444 fax. 416.966.4443  
www.snyderarchitects.ca

---

Consultants

Structural Consultants  
**Kalos Engineering Inc.**  
875 Main St. W. Unit 3  
Hamilton, Ontario L8S 4P9  
Tel: 905-333-9119

Mechanical and Electrical Consultants  
**EXP**  
1266 S. Service Rd.  
Stoney Creek, Ontario, L8E 5R9  
Tel: 905-525-6069

---

Key Plan N.T.S.

No.	Revisions	Date
4	ISSUED FOR BIDS	2024.04.09
3	ISSUED FOR BUILDING PERMIT	2024.03.21
2	ISSUED FOR PROGRESS	2024.02.23
1	ISSUED FOR PROGRESS	2024.02.15
No.	Issue	Date

General Contractor shall check and verify all dimensions and report all errors and omissions to the Architect. Do not scale the drawings. Drawings shall not be used for construction purposes until issued by the Architect for construction.

---

Drawing Title:  
**ELECTRICAL SYSTEMS LEGEND DEMO NOTES AND DRAWING LIST**

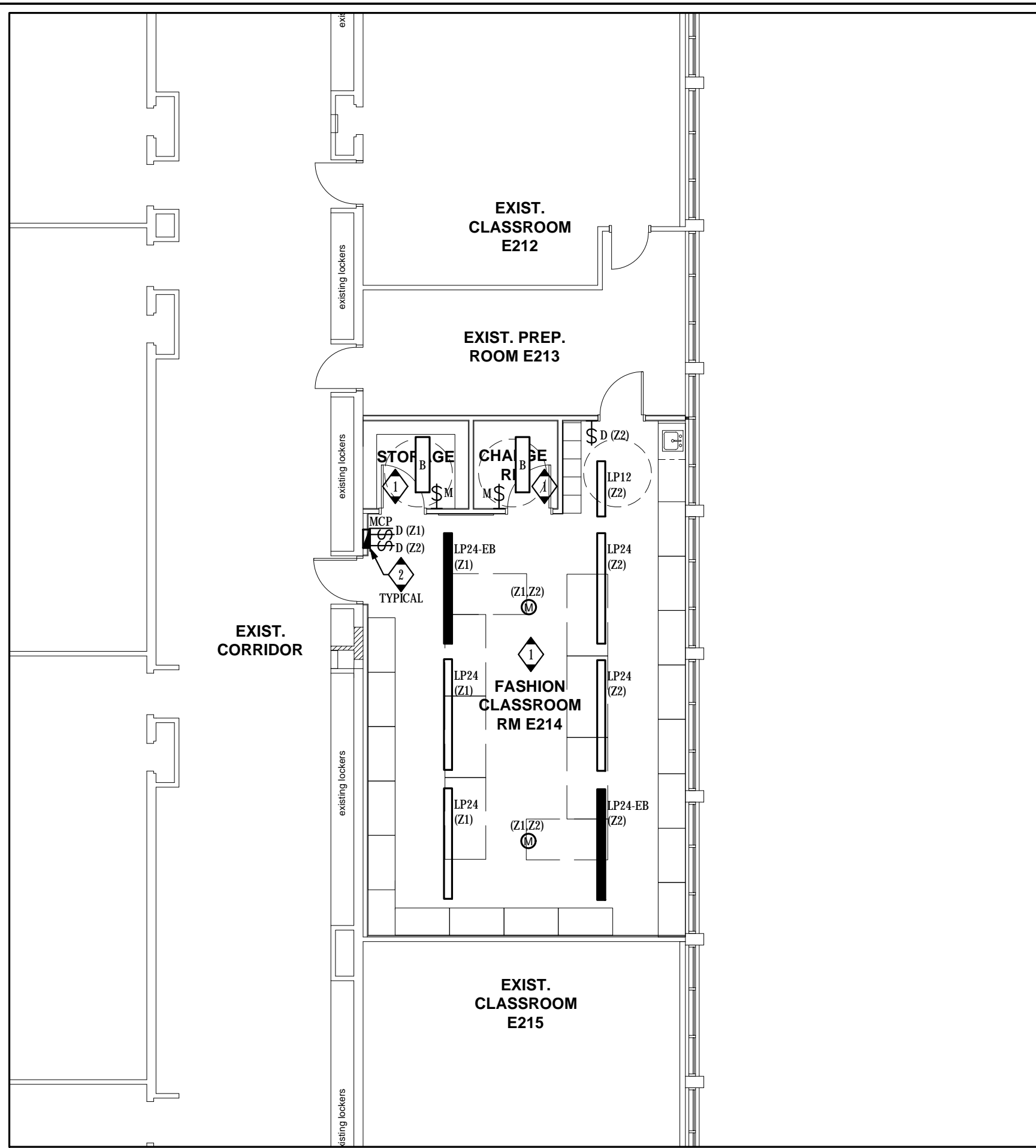
Scale:	-	Date:	05/01/2023
Drawn by:	T.T.	Checked by:	J.P.
Job No.	2215B	Drawing No.	E000



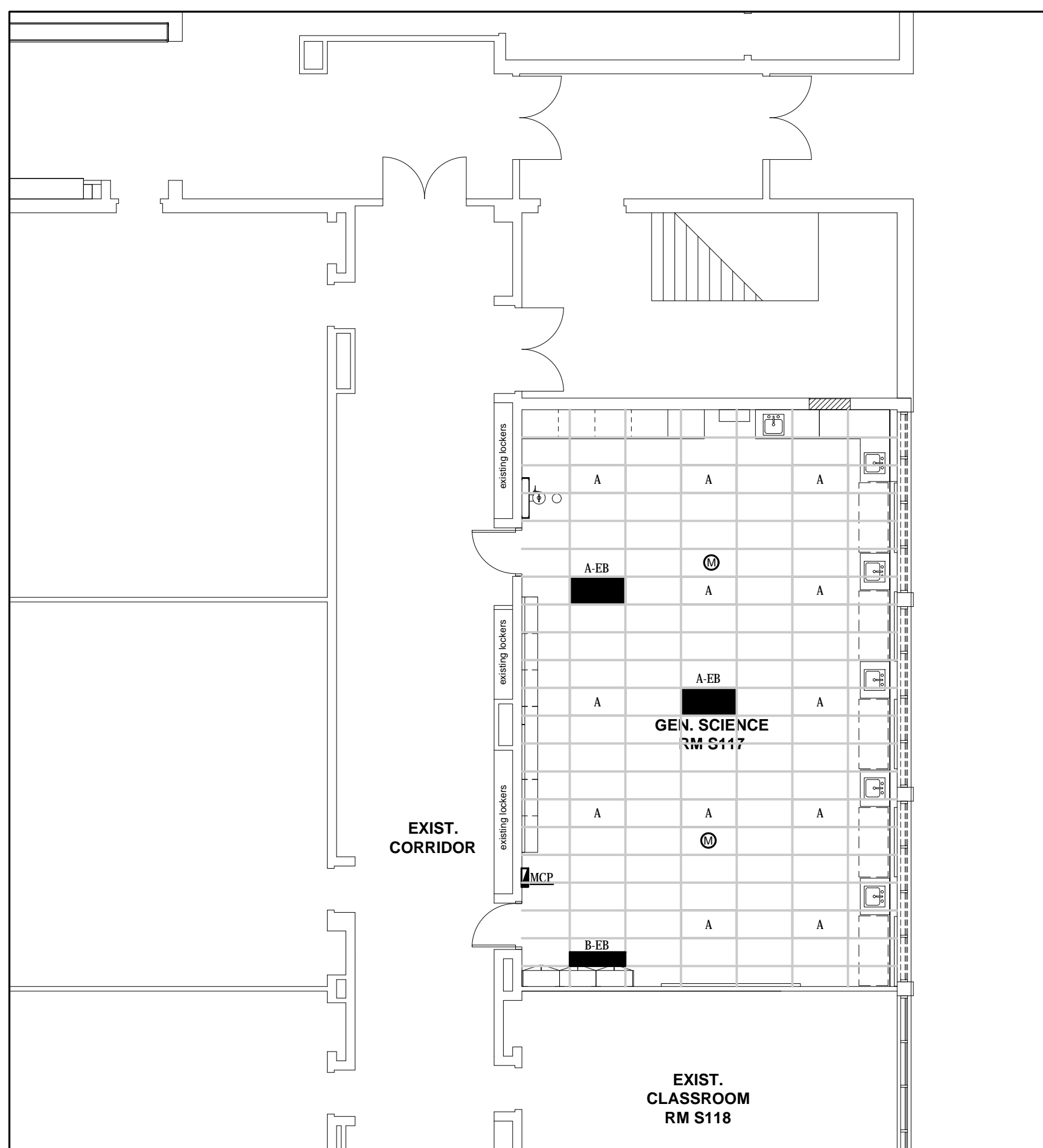








3 AREA 3 - RENOVATION LIGHTING  
E201 1:100



2 AREA 2 - RENOVATION LIGHTING  
E201 1:100

**GENERAL NOTES**

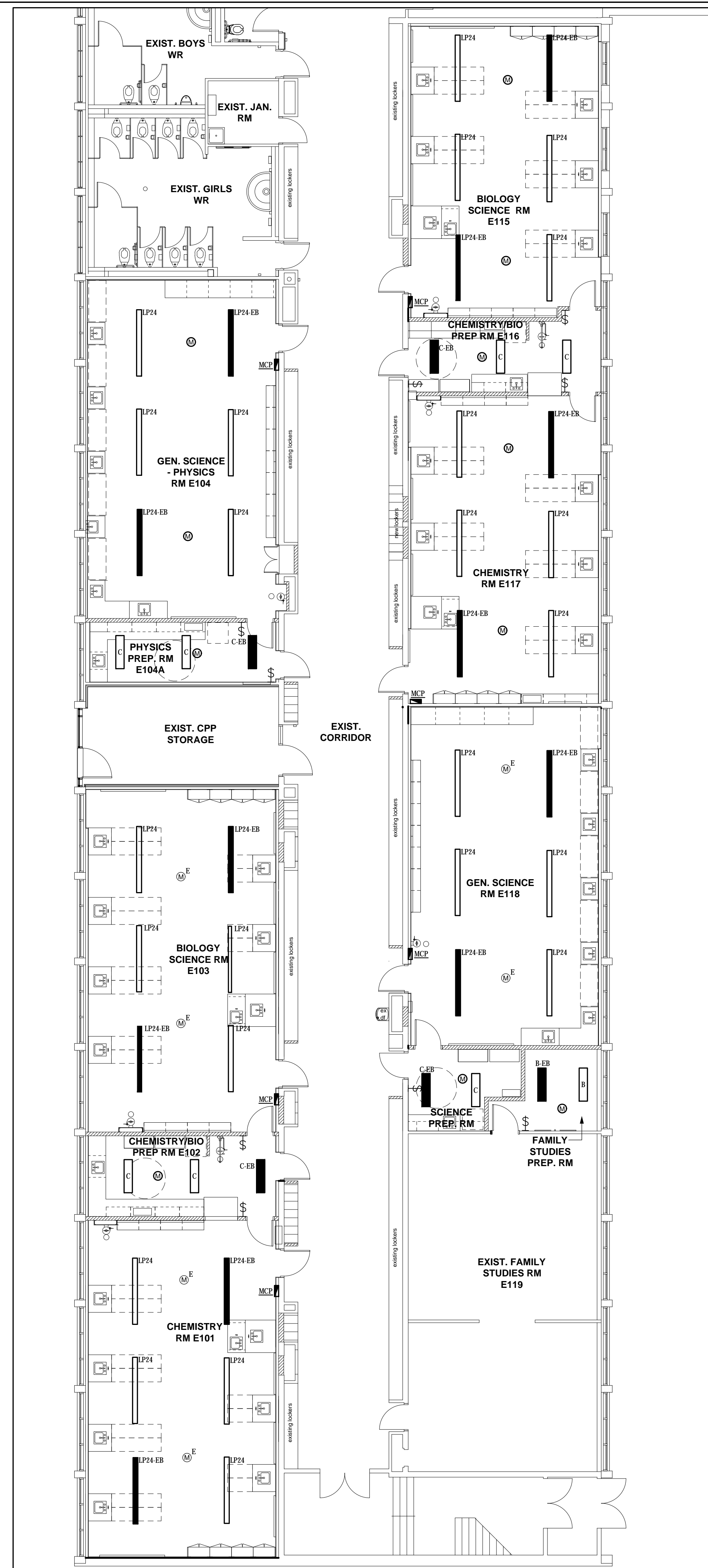
1. REFER TO LIGHTING CONTROLS NOTE ON DRAWING E201.

**DRAWING NOTES**

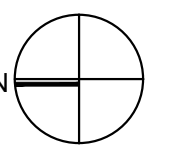
UNLESS INDICATED OTHERWISE, WIRE ALL NEW LIGHTING FIXTURE IN THIS ROOM TO EXISTING ROOM LIGHTING BRANCH CIRCUIT WIRING MADE AVAILABLE/SPARE BY THE DEMOLITION AND THROUGH NEW LIGHTING CONTROL DEVICES AND CONTROL ZONES AS INDICATED ON PLANS. MODIFY AND EXTEND EXISTING BRANCH CIRCUIT WIRING AS REQUIRED.

REFER TO TYPICAL MILLWORK/MODULAR CONTROL PANEL DETAIL ON DRAWING E201.

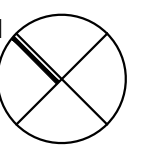
1 AREA 1 - RENOVATION LIGHTING  
E201 1:100



Key Plan N.T.S.



Project North



True North

No.	Revisions	Date
4	ISSUED FOR BIDS	2024.04.09
3	ISSUED FOR PERMIT	2024.03.21
2	ISSUED FOR PROGRESS	2024.02.23
1	ISSUED FOR PROGRESS	2024.02.15
No.	Issue	Date

General Contractor shall check and verify all dimensions and report all errors and omissions to the Architect. Do not scale the drawings. Drawings shall not be used for construction purposes until issued by the Architect for construction.

Drawing Title:  
**LEVEL 0 & 1 LIGHTING  
RENOVATION PLANS**

Scale: 1:100 Date: 05/01/2023

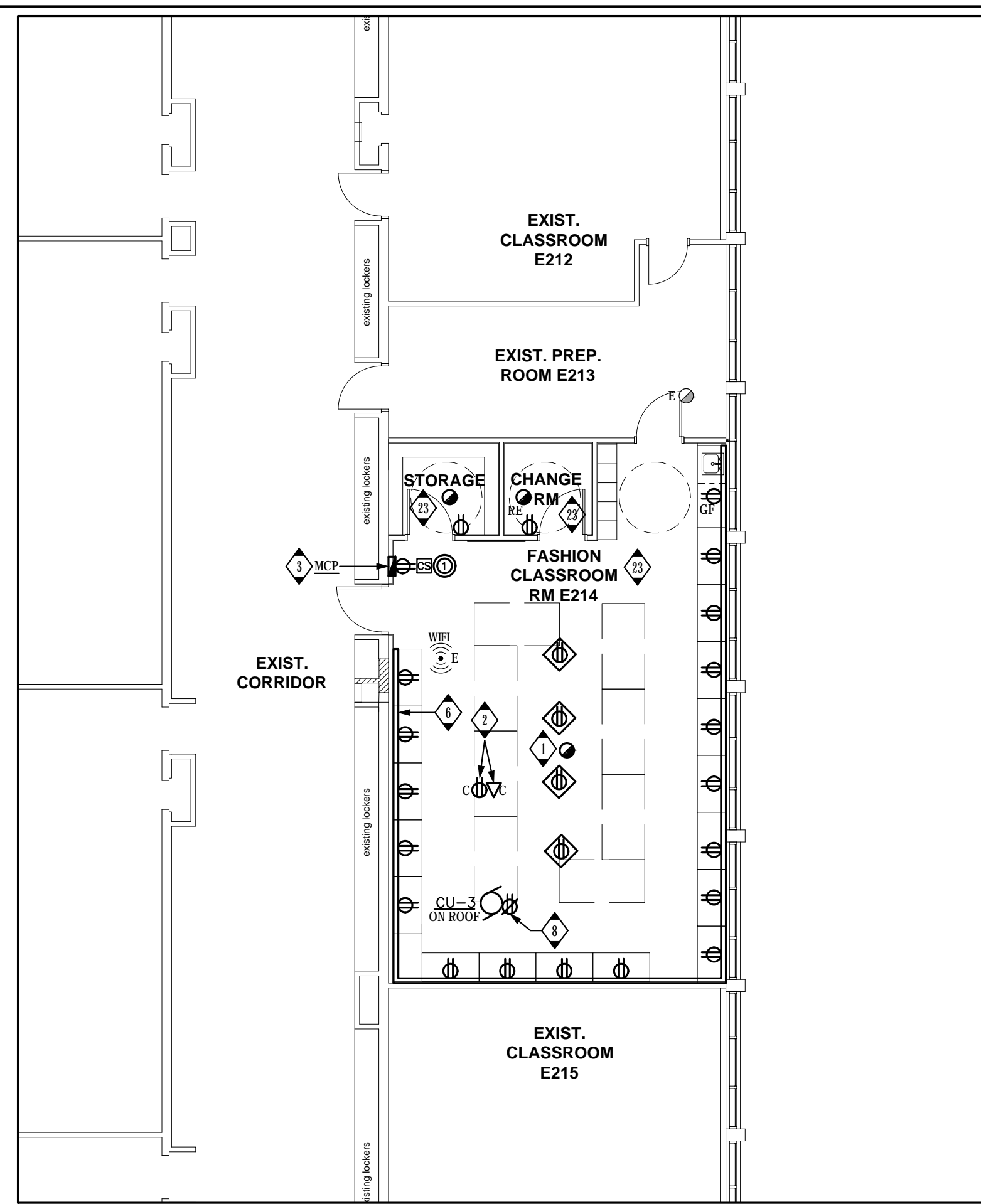
Drawn by: T.T. Checked by: J.P.

Job No. Drawing No.

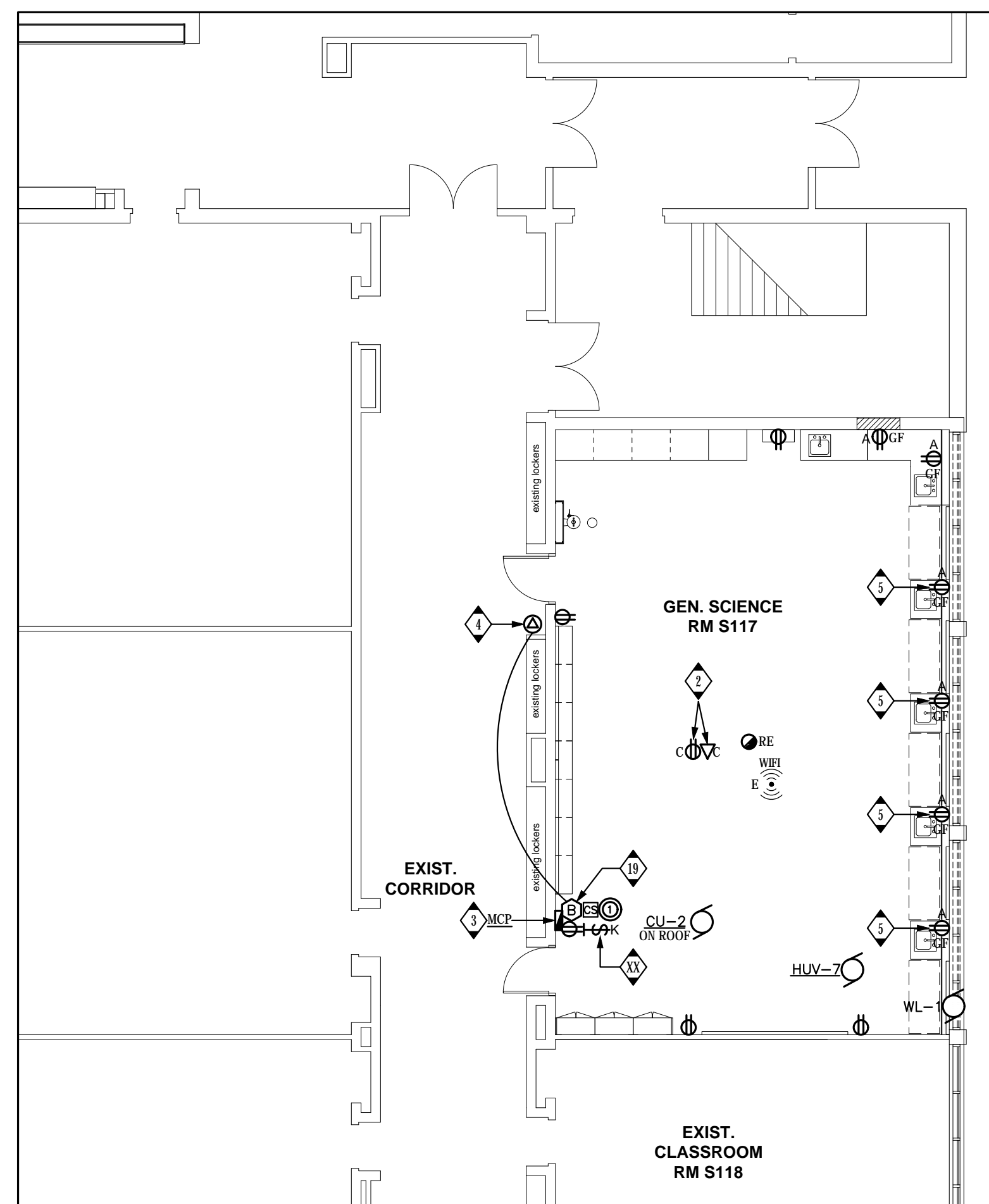
2215B

E201





3 AREA 3 - RENOVATION POWER  
E301 1:100



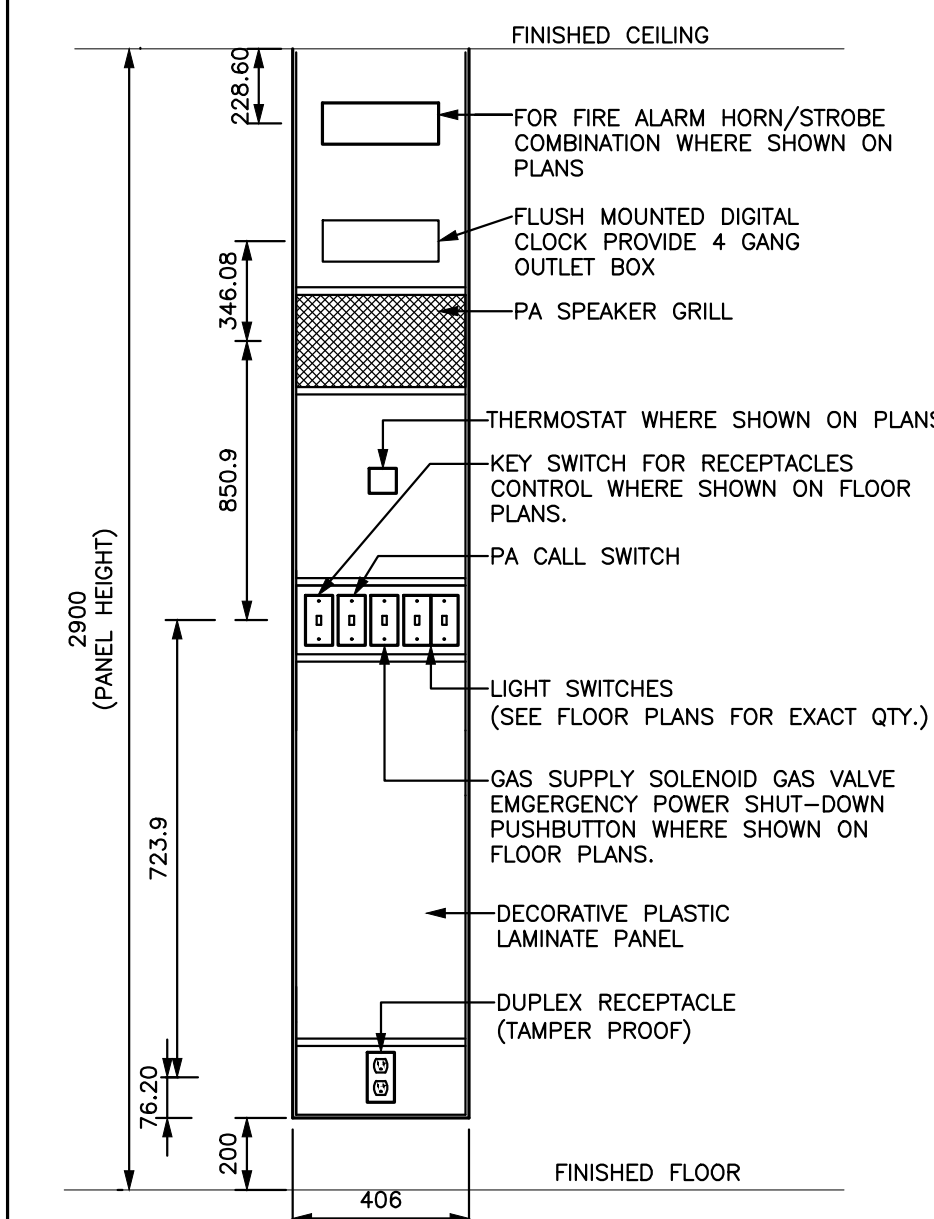
2 AREA 2 - RENOVATION POWER  
E301 1:100

**GENERAL NOTES**

- REFER TO DRAWING E000 FOR DEMOLITION NOTES.
- COORDINATE ALL REQUIRED POWER SHUT-DOWNS WITH THE SCHOOL BOARD. PROVIDE A ONE (1) WEEK NOTICE PRIOR TO ANY SHUT-DOWN AND PERFORM ALL REQUIRED WORK OUTSIDE OF REGULAR SCHOOL HOURS OF OPERATION AND OR ON WEEKENDS AND AT PREMIUM TIME.

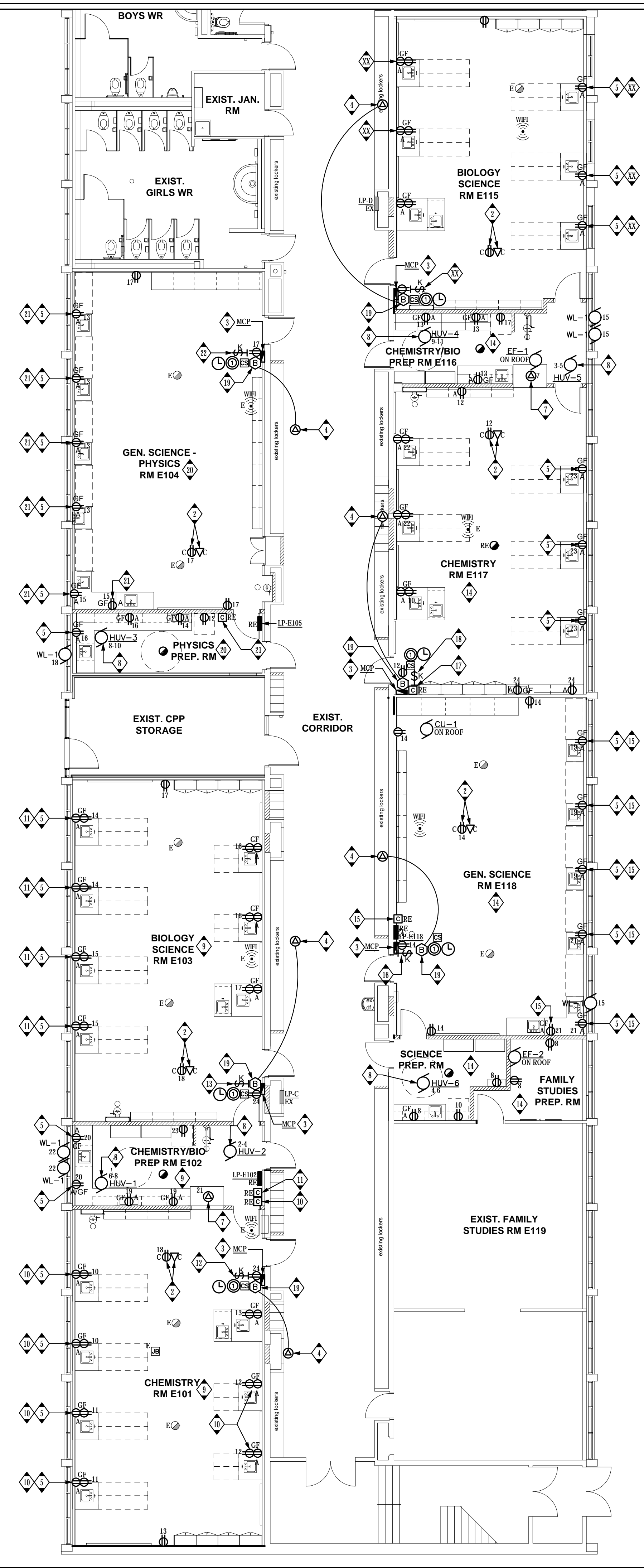
**DRAWING NOTES**

- PROVIDE FOUR (4) POWER DROP PULLEY AT INDICATED LOCATION. COORDINATE WITH ARCHITECT FOR EXACT LOCATION.
- FOR CEILING MOUNTED PROJECTOR, CONFIRM EXACT LOCATION WITH GENERAL CONTRACTOR PRIOR TO ROUGH INS. PROJECTOR SUPPLIED AND INSTALLED BY THE GENERAL CONTRACTOR.
- MODULAR CONTROL PANEL BY GENERAL CONTRACTOR. REFER TO TYPICAL MILLWORK/MODULAR CONTROL PANEL DETAIL ON THIS DRAWING FOR ELECTRICAL SCOPE OF WORK ASSOCIATED WITH THIS PANEL.
- MECHANICAL DIVISION SUPPLIED AND INSTALLED GAS SUPPLY SOLENOID VALVE IN CEILING SPACE. RUN AND CONNECT A 120V BRANCH CIRCUIT TO VALVE THROUGH MECHANICAL DIVISION SUPPLIED AND INSTALLED PUSHBUTTON AS SHOWN ON PLANS. PROVIDE A FIRE ALARM CONTROL RELAY (FACR) AND INTERLOCK WITH GAS VALVE POWER SUPPLY FOR AUTOMATIC POWER SHUT-OFF ON FIRE ALARM ACTIVATION. REFER TO DRAWING NOTE No.19 ON THIS DRAWING.
- MOUNT FACING UP, ON TOP OF WINDOW SILL. REFER TO ARCHITECTURAL FOR DETAILS.
- RECESSED RACEWAY ALONG WALL COMPLETE WITH DUPLEX RECEPTACLES AS SHOWN. CONFIRM EXACT TOTAL LENGTH ON SITE PRIOR TO ORDERING.
- RUN A 120V BRANCH CIRCUIT AND CONNECT TO PREWIRED JUNCTION BOX INTEGRAL TO THE FUME HOOD LOCATED ON TOP OF FUME HOOD.
- PROVIDE A NEW 15A-2P BREAKER IN AVAILABLE SPACES OR REMOVE EXISTING BREAKERS MADE SPARE FROM DEMOLITION IN EXISTING PANEL AND CONNECT NEW BREAKER TO NEW RUV UNIT.
- UNLESS OTHERWISE INDICATED, ALL BRANCH CIRCUIT NUMBERS SHOWN IN THIS ROOM ARE FROM EXISTING, RELOCATED PANEL "LP-E102". REUSE EXISTING SPARE BREAKERS AND EXISTING BREAKERS MADE SPARE FROM THE DEMOLITION OR PROVIDE NEW BREAKERS AS REQUIRED.
- EXISTING RELOCATED LAB RECEPTACLES CONTROL CONTACTOR FROM EXISTING PREP. ROOM E106 FOR CIRCUITS Nos. 10, 11 AND 12 FROM EXISTING RELOCATED PANEL "LP-E102". REPLACE EXISTING LAMACOID NAMEPLATE WITH NEW WITH THE INSCRIPTION "BENCH RECEPTACLES CIRCUITS Nos.10, 11 AND 12. CHEMISTRY ROOM E106". REFER TO TYPICAL LAB RECEPTACLES CONTROL WIRING DIAGRAM ON THIS DRAWING.
- EXISTING RELOCATED LAB RECEPTACLES CONTROL CONTACTOR FROM EXISTING PREP. ROOM E102 FOR CIRCUITS Nos. 14, 15 AND 16 FROM EXISTING RELOCATED PANEL "LP-E102". REPLACE EXISTING LAMACOID NAMEPLATE WITH NEW WITH THE INSCRIPTION "BENCH RECEPTACLES CIRCUITS Nos.14, 15 AND 16. BIOLOGY SCIENCE ROOM E102". REFER TO TYPICAL LAB RECEPTACLES CONTROL WIRING DIAGRAM ON THIS DRAWING.
- KEY SWITCH FOR LAB RECEPTACLES IN CHEMISTRY ROOM E102. MOUNT IN MILLWORK/MODULAR CONTROL PANEL. WIRE PER TYPICAL LAB RECEPTACLES CONTROL WIRING DIAGRAM ON THIS DRAWING. CONFIRM EXACT LOCATION WITH OWNER PRIOR TO ROUGH-IN.
- KEY SWITCH FOR LAB RECEPTACLES IN BIOLOGY SCIENCE ROOM E102. MOUNT IN MILLWORK/MODULAR CONTROL PANEL. WIRE PER TYPICAL LAB RECEPTACLES CONTROL WIRING DIAGRAM ON THIS DRAWING. CONFIRM EXACT LOCATION WITH OWNER PRIOR TO ROUGH-IN.
- UNLESS OTHERWISE INDICATED, ALL BRANCH CIRCUIT NUMBERS SHOWN IN THIS ROOM ARE FROM EXISTING, RELOCATED PANEL "LP-E118". REUSE EXISTING SPARE BREAKERS AND EXISTING BREAKERS MADE SPARE FROM THE DEMOLITION OR PROVIDE NEW BREAKERS AS REQUIRED.
- EXISTING RELOCATED LAB RECEPTACLES CONTROL CONTACTOR FROM EXISTING PREP. ROOM E106 FOR CIRCUITS Nos.19 AND 21 FROM EXISTING RELOCATED PANEL "LP-E118". REPLACE EXISTING LAMACOID NAMEPLATE WITH NEW WITH THE INSCRIPTION "BENCH RECEPTACLES CIRCUITS Nos.19 AND 21 GENERAL SCIENCE ROOM E118". REFER TO TYPICAL LAB RECEPTACLES CONTROL WIRING DIAGRAM ON THIS DRAWING.
- KEY SWITCH FOR LAB RECEPTACLES IN CHEMISTRY ROOM E118. MOUNT IN MILLWORK/MODULAR CONTROL PANEL AND WIRE PER TYPICAL LAB RECEPTACLES CONTROL WIRING DIAGRAM ON THIS DRAWING.
- EXISTING RELOCATED LAB RECEPTACLES CONTROL CONTACTOR FROM EXISTING PREP. ROOM E106 FOR CIRCUITS Nos.22, 23 AND 24 FROM EXISTING RELOCATED PANEL "LP-E118". REPLACE EXISTING LAMACOID NAMEPLATE WITH NEW WITH THE INSCRIPTION "BENCH RECEPTACLES CIRCUITS Nos.22, 23 AND 24 CHEMISTRY ROOM E117". REFER TO TYPICAL LAB RECEPTACLES CONTROL WIRING DIAGRAM ON THIS DRAWING.
- KEY SWITCH FOR LAB RECEPTACLES CONTROLS IN CHEMISTRY ROOM E117. MOUNT IN MILLWORK/MODULAR CONTROL PANEL AND WIRE PER TYPICAL LAB RECEPTACLES CONTROL WIRING DIAGRAM ON THIS DRAWING. CONFIRM EXACT LOCATION WITH OWNER PRIOR TO ROUGH-IN.
- MECHANICAL DIVISION SUPPLIED AND INSTALLED GAS SUPPLY SOLENOID VALVE EMERGENCY POWER SHUT-OFF PUSHBUTTON IN MILLWORK/MODULAR CONTROL PANEL. WIRE TO ASSOCIATED VALVE AS PER MANUFACTURER'S RECOMMENDATIONS AND DRAWING NOTE No.4 ON THIS DRAWING.
- UNLESS OTHERWISE INDICATED, ALL BRANCH CIRCUIT NUMBERS SHOWN IN THIS ROOM ARE FROM EXISTING, RELOCATED PANEL "LP-E105". REUSE EXISTING SPARE BREAKERS AND EXISTING BREAKERS MADE SPARE FROM THE DEMOLITION OR PROVIDE NEW AS REQUIRED.
- EXISTING RELOCATED LAB RECEPTACLES CONTROL CONTACTOR FROM EXISTING PREP. ROOM E106 FOR CIRCUITS Nos.13 AND 15 FROM EXISTING RELOCATED PANEL "LP-E105". REPLACE EXISTING LAMACOID NAMEPLATE WITH NEW WITH THE INSCRIPTION "BENCH RECEPTACLES CIRCUITS Nos.13 AND 15 GENERAL SCIENCE PHYSICS ROOM E104". REFER TO TYPICAL LAB RECEPTACLES CONTROL WIRING DIAGRAM ON THIS DRAWING.
- KEY SWITCH FOR LAB RECEPTACLES CONTROLS IN CHEMISTRY ROOM E105. MOUNT IN MILLWORK/MODULAR CONTROL PANEL AND WIRE PER TYPICAL LAB RECEPTACLES CONTROL WIRING DIAGRAM ON THIS DRAWING. CONFIRM EXACT LOCATION WITH OWNER PRIOR TO ROUGH-IN.
- UNLESS OTHERWISE INDICATED, ALL BRANCH CIRCUIT NUMBERS SHOWN IN THIS ROOM ARE FROM EXISTING PANEL "LP-Q". REUSE EXISTING SPARE BREAKERS AND EXISTING BREAKERS MADE SPARE FROM THE DEMOLITION OR PROVIDE NEW BREAKERS AS REQUIRED.



4 TYPICAL MILLWORK/MODULAR CONTROL PANEL DETAIL  
E301 N.T.S.

1 AREA 1 - RENOVATION POWER  
E301 1:100



Key Plan N.T.S.



Project North True North

No.	Revisions	Date
4	ISSUED FOR BIDS	2024.04.09
3	ISSUED FOR PERMIT	2024.03.21
2	ISSUED FOR PROGRESS	2024.02.23
1	ISSUED FOR PROGRESS	2024.02.15
No.	Issue	Date

General Contractor shall check and verify all dimensions and report all errors and omissions to the Architect. Do not scale the drawings. Drawings shall not be used for construction purposes until issued by the Architect for construction.

Drawing Title:  
**LEVEL 0 & 1 POWER & SYSTEMS RENOVATION PLANS**

Scale: 1:100 Date: 05/01/2023

Drawn by: T.T. Checked by: J.P.

Job No. Drawing No.

**2215B E301**

