



Halton District School Board

Addendum No. 2

RFT 22-107 HVAC & Ventilation Upgrades - Rolling Meadows PS

The following, issued by the Halton District School Board April 22, 2022, shall be incorporated in the specifications and shall form part of the proposal document for the above.

ATTACHED:

- Addendum as drafted by Grguric Architects Inc. (5 pages)

REVISED:

Bidders must submit their Submission **via email** on or before 2:00 p.m., Eastern Daylight Time on **April 29, 2022** (the “Closing Time”) to the following address:

chatelaina@hdsb.ca
Attention: Amanda Chatelain

Submissions will be deemed to be officially received by the time stamp issued by the HDSB’s email server. Submissions received after the official closing time will be declared non-compliant and shall not be considered during the selection process. Electronic submission shall be no larger than 25MB. Proponents are responsible for confirming that their submission has been successfully received

RECEIPT OF ADDENDA MUST BE ACKNOWLEDGED ON THE FORM OF TENDER.

PAGE 1 OF 6
OF ADDENDUM 2

ARCHITECTURAL

- Item 1** **Revision** – In classroom 201 and 203, the new bulkheads (BH-1 and BH-2) shown on the second-floor reflected ceiling plan (A1.07) are to be painted.
- Item 2** **Clarification** – In classroom 202, the new bulkhead shown along the existing windows on the north side of the room is to be bulkhead type BH-1 with a height to the underside of the bulkhead of 2945mm.
- Item 3** **Clarification** – In music room 119, the existing 305mm x 305mm acoustic tile ceiling is to remain.

ELECTRICAL

- Item 1** **Question:** Just confirming: are all corridor light fixtures to remain?
Answer: Yes
- Item 2** **Question:** Page E5 shows 2 type B fixtures. Legend states not used. Please confirm.
Answer: Light fixtures in corridors are existing to remain (see enclosed revised drawing E5)
- Item 3** **Question:** Page E6 in the stair lobby show new heat detector? Please confirm.
Answer: Heat detectors in corridors and stairs are existing to remain (see enclosed revised drawing E6)
- Item 4** **Question:** Page E11 & E12 both show panel DP-UV2. Please clarify.
Answer: Panel DP-UV1 is shown on drawing E11, and panel DP-UV2 is shown on drawing E12. (see enclosed revised drawing E11)
- Item 5** **Revision** – New panels DP-UV1 and DP-UV2 schedules have been updated (see enclosed revised drawing E13)

End of Addendum 1

NO.	ISSUANCES & REVISIONS	DATE
3	FOR PERMIT REVISIONS	AUG 11, 2021
2	FOR PERMIT / TENDER	MAY 6, 2021
1	FOR COORDINATION	APR 20, 2021

ALL DRAWINGS, DESIGNS AND RELATED DOCUMENTS ARE THE PROPERTY OF "PNF ENGINEERING INC." AND MUST BE RETURNED ON REQUEST. REPRODUCTION OF THIS DRAWING AND ANY RELATED DOCUMENTS IN PART OR IN WHOLE IS FORBIDDEN.
THESE DRAWINGS WERE PREPARED FOR BUILDING PERMIT AND AS A GENERAL CONSTRUCTION GUIDE. ANY MAJOR DISCREPANCIES WHICH ARE EXPOSED AFTER DEMOLITION SHALL BE REPORTED TO THE OWNER REPRESENTATIVE AND ENGINEERS PRIOR TO COMMENCEMENT OF ANY WORK.
THESE DRAWINGS ARE NOT TO BE SCALED.

Project Address : 1522 MOUNTAIN GROVE AVE. BURLINGTON, ONTARIO, L7R 2H2
Project Description : ROLLING MEADOWS PUBLIC SCHOOL RENOVATIONS
Drawing Description : GROUND FLOOR CEILING NEW LAYOUT

Designed: R.P.
Checked: D.R.
Scale: AS SHOWN
Date: FEB 2020

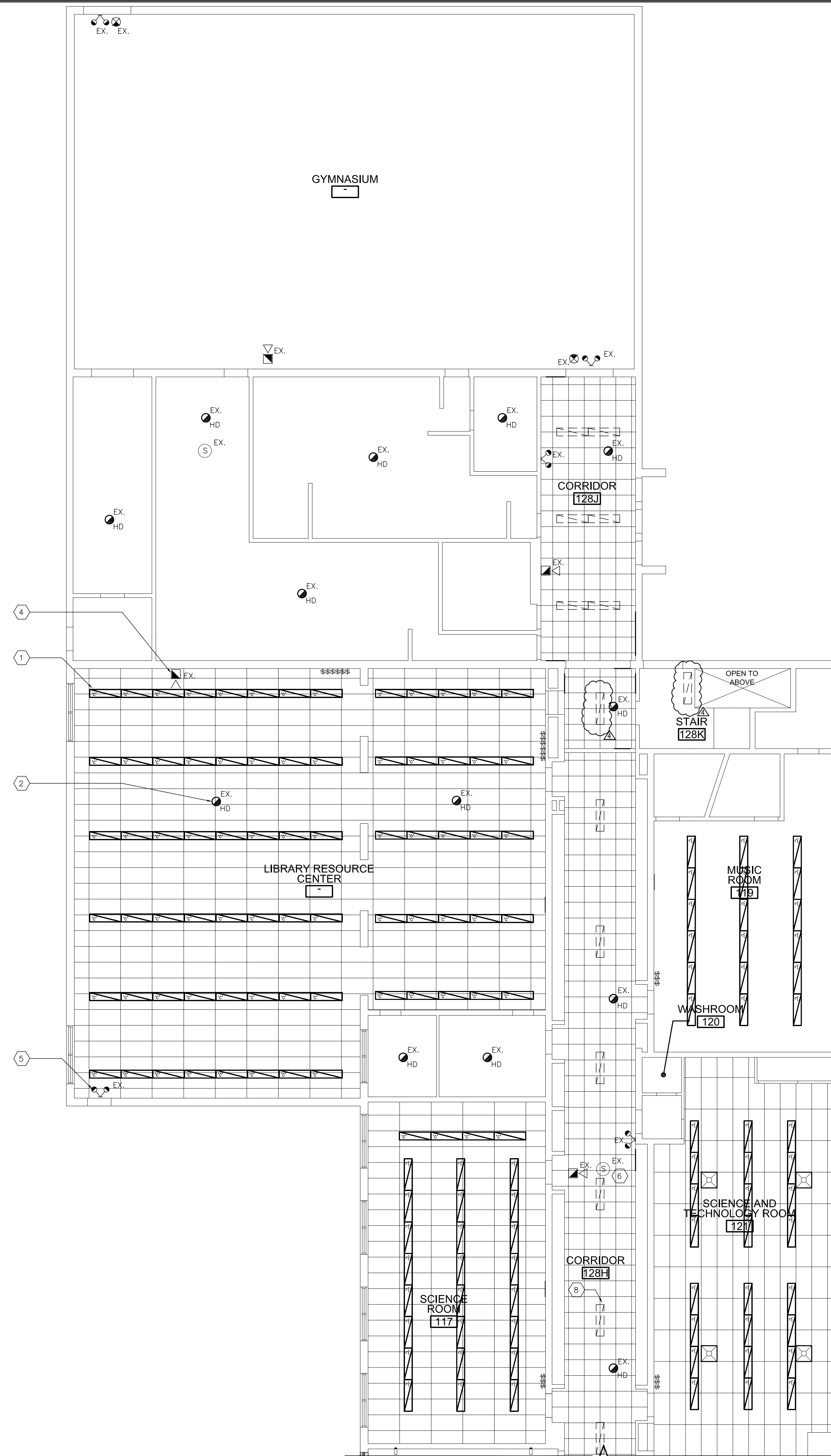
PNF Project No. 29083 Dwg.No. E-5

DRAWING NOTES

- 1 SUPPLY AND INSTALL NEW LIGHTING FIXTURE AS SPECIFIED. RE-USE EXISTING AND PROVIDE NEW LIGHTING CIRCUITS AS REQUIRED TO ACCOMMODATE NEW LIGHTING LAYOUT. TYPICAL WHERE SHOWN.
- 2 EXISTING CEILING MOUNTED FIRE ALARM DEVICES TO REMAIN. TYPICAL WHERE SHOWN.
- 3 EXISTING CEILING MOUNTED EMERGENCY EXIT LIGHTS TO REMAIN. TYPICAL WHERE SHOWN.
- 4 EXISTING WALL MOUNTED FIRE ALARM STROBE AND HORN TO REMAIN. TYPICAL WHERE SHOWN.
- 5 EXISTING WALL MOUNTED EMERGENCY LIGHTING TO REMAIN. TYPICAL WHERE SHOWN.
- 6 EXISTING CEILING SPEAKER TO REMAIN. TYPICAL WHERE SHOWN.
- 7 PROVIDE NEW LIGHTING SWITCH AND PLATE AS SHOWN. CONNECT TO EXISTING LIGHTING CIRCUITS. TYPICAL WHERE SHOWN.
- 8 EXISTING LIGHT FIXTURE IN CORRIDOR TO REMAIN. TYP.

GENERAL NOTES:

1. FOR FULL DEMOLITION LAYOUT REFER TO ARCHITECTURAL LAYOUT. ELECTRICAL CONTRACTOR SHALL COORDINATE WITH ARCHITECTURAL DRAWINGS.
2. EXISTING EXIT AND EMERGENCY LIGHTING SHALL BE OPERATIONAL DURING CONSTRUCTION FOR ALL EXIT ROUTES.
4. COORDINATE ALL WORK WITH OTHER TRADES PRIOR TO INSTALLATION.
5. EXTEND WIRING AND RE-CONNECT TO EXISTING CIRCUITS AS NECESSARY TO ACCOMMODATE NEW LIGHTING RETROFITS AND FIXTURES. EXACT WIRING ROUTING SHALL BE CONFIRMED ON SITE.
6. CONFIRM ELECTRICAL REQUIREMENTS AND EXACT POINT OF TERMINATION FOR ALL LIGHTING PRIOR TO ORDERING AND INSTALLATION.
7. LOCATION OF EXISTING ELECTRICAL SERVICES ARE TAKEN FROM EXISTING ELECTRICAL DRAWINGS. EXACT LOCATION SHALL BE CONFIRMED ON SITE BY CONTRACTOR.
8. ALL WALL MOUNTED EQUIPMENT AND ACCESSORIES SHALL BE SURFACE MOUNTED WITH SURFACE MOUNTED CONDUITS.
9. ALL NEW FIRE ALARM DEVICES SHALL BE COMPATIBLE WITH EXISTING FIRE ALARM SYSTEM.
10. PROVIDE TESTING, VERIFICATION AND REPORT FOR ALL FIRE ALARM AND EMERGENCY LIGHTING DEVICES BEING DISCONNECT AND RECONNECTED AFTER NEW CEILING IS INSTALLED.



1 GROUND FLOOR - NEW LAYOUT
E-5 SCALE 1:100

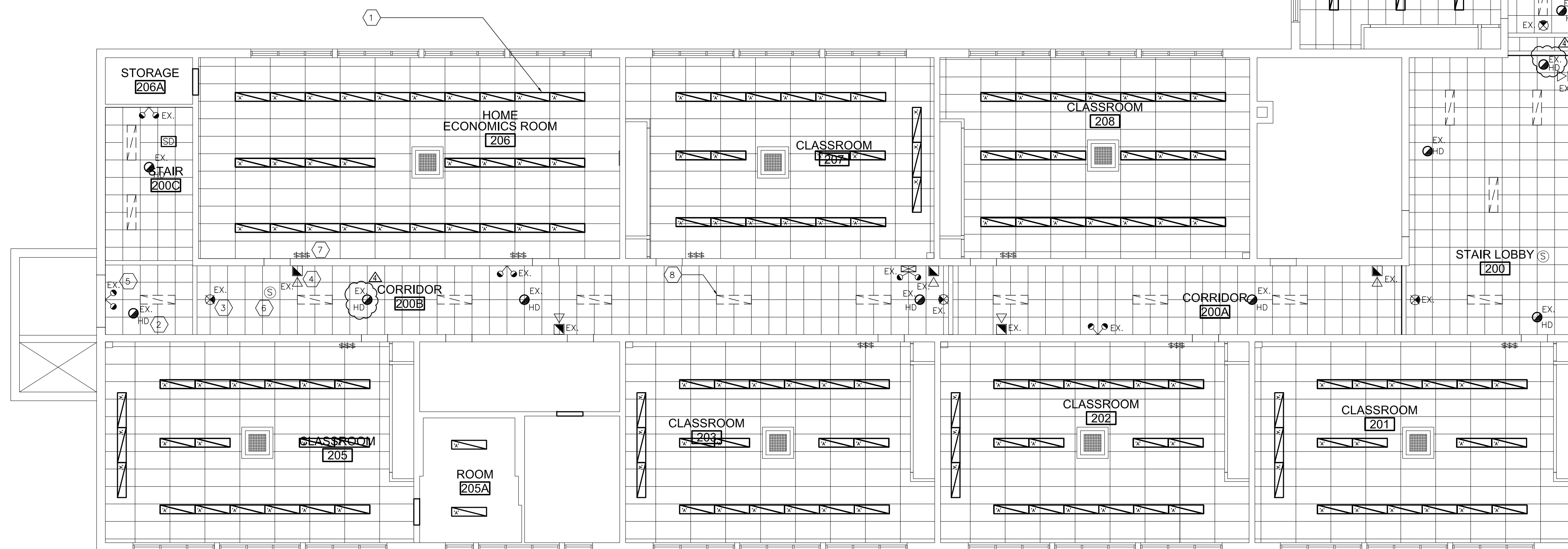
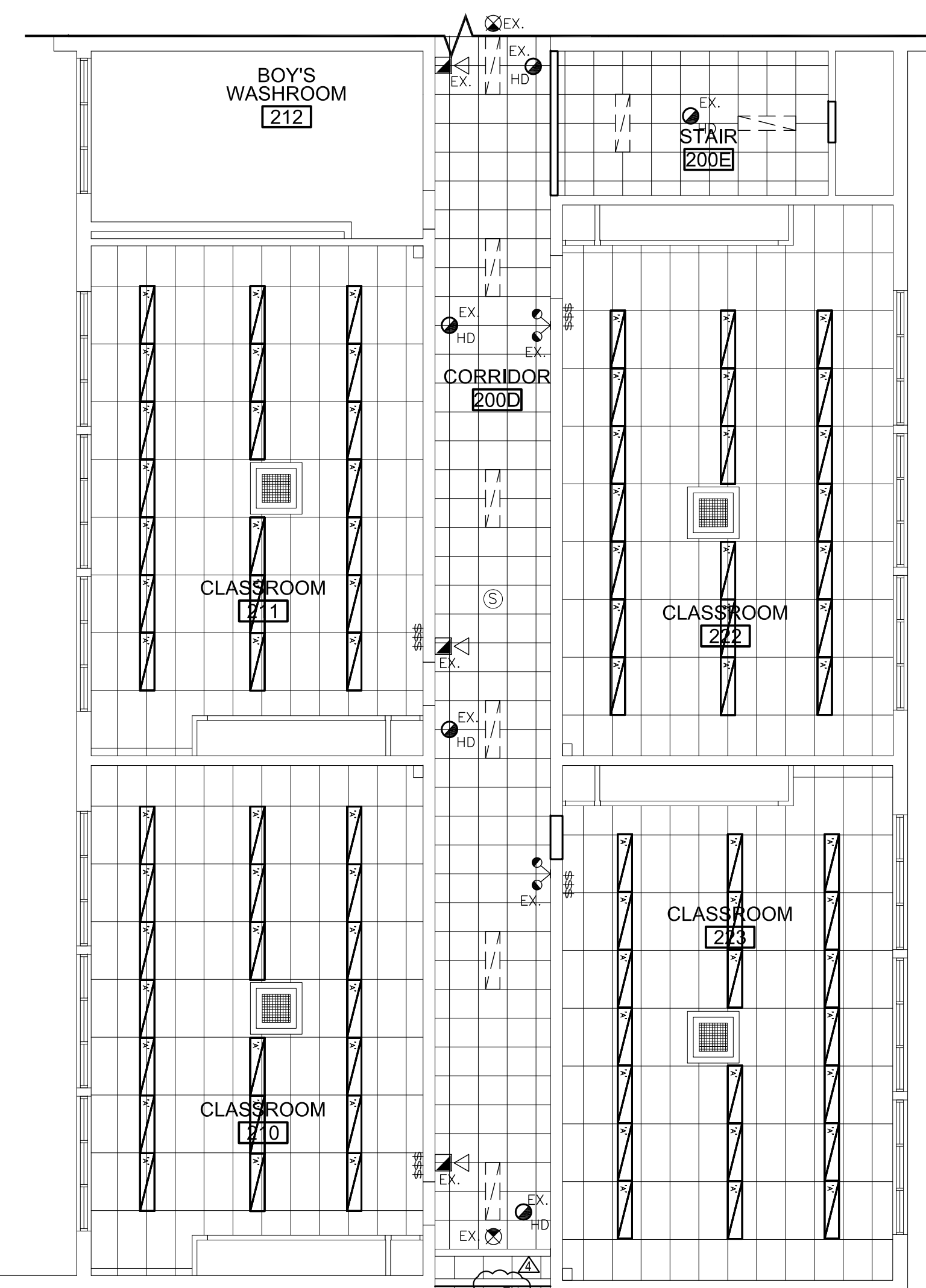
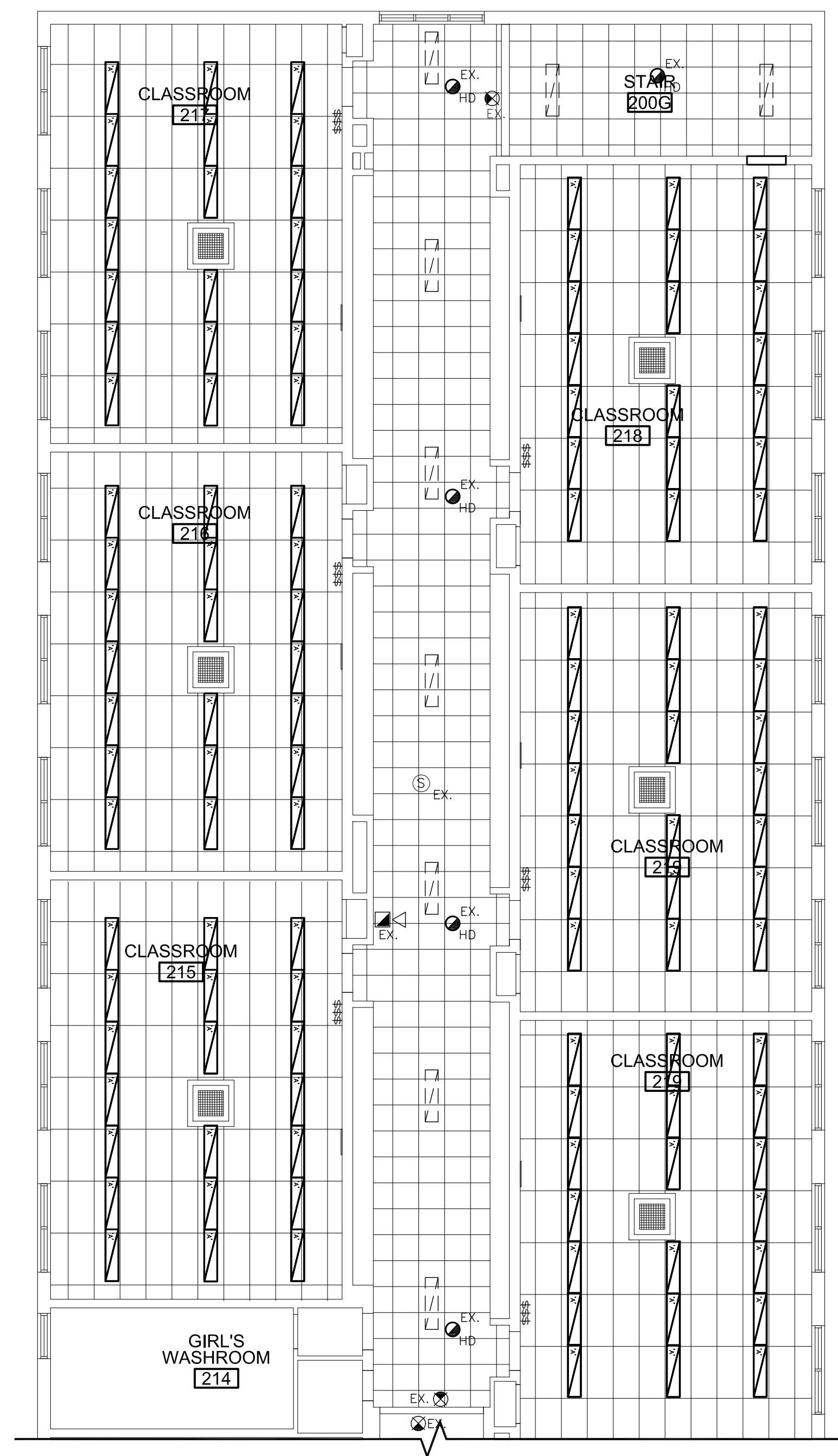
DRAWING NOTES

- 1 SUPPLY AND INSTALL NEW LIGHTING FIXTURE AS SPECIFIED. RE-USE EXISTING AND PROVIDE NEW LIGHTING CIRCUITS AS REQUIRED TO ACCOMMODATE NEW LIGHTING LAYOUT. TYPICAL WHERE SHOWN.
- 2 EXISTING CEILING MOUNTED FIRE ALARM DEVICES TO REMAIN. TYPICAL WHERE SHOWN.
- 3 EXISTING CEILING MOUNTED EMERGENCY EXIT LIGHTS TO REMAIN. TYPICAL WHERE SHOWN.
- 4 EXISTING WALL MOUNTED FIRE ALARM STROBE AND HORN TO REMAIN. TYPICAL WHERE SHOWN.
- 5 EXISTING WALL MOUNTED EMERGENCY LIGHTING TO REMAIN. TYPICAL WHERE SHOWN.
- 6 EXISTING CEILING SPEAKER TO REMAIN. TYPICAL WHERE SHOWN.
- 7 PROVIDE NEW LIGHTING SWITCH AND PLATE AS SHOWN. CONNECT TO EXISTING LIGHTING CIRCUITS. TYPICAL WHERE SHOWN.
- 8 EXISTING LIGHT FIXTURE IN CORRIDOR TO REMAIN. TYP.

GENERAL NOTES:

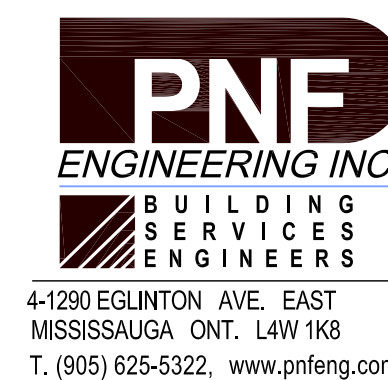
1. FOR FULL DEMOLITION LAYOUT REFER TO ARCHITECTURAL LAYOUT. ELECTRICAL CONTRACTOR SHALL COORDINATE WITH ARCHITECTURAL DRAWINGS.
2. EXISTING EXIT AND EMERGENCY LIGHTING SHALL BE OPERATIONAL DURING CONSTRUCTION FOR ALL EXIT ROUTES.
4. COORDINATE ALL WORK WITH OTHER TRADES PRIOR TO INSTALLATION.
5. EXTEND WIRING AND RE-CONNECT TO EXISTING CIRCUITS AS NECESSARY TO ACCOMMODATE NEW LIGHTING RETROFITS AND FIXTURES. EXACT WIRING ROUTING SHALL BE CONFIRMED ON SITE.
6. CONFIRM ELECTRICAL REQUIREMENTS AND EXACT POINT OF TERMINATION FOR ALL LIGHTING PRIOR TO ORDERING AND INSTALLATION.
7. LOCATION OF EXISTING ELECTRICAL SERVICES ARE TAKEN FROM EXISTING ELECTRICAL DRAWINGS. EXACT LOCATION SHALL BE CONFIRMED ON SITE BY CONTRACTOR.
8. ALL WALL MOUNTED EQUIPMENT AND ACCESSORIES SHALL BE SURFACE MOUNTED WITH SURFACE MOUNTED CONDUITS.
9. ALL NEW FIRE ALARM DEVICES SHALL BE COMPATIBLE WITH EXISTING FIRE ALARM SYSTEM.
10. PROVIDE TESTING, VERIFICATION AND REPORT FOR ALL FIRE ALARM AND EMERGENCY LIGHTING DEVICES BEING DISCONNECT AND RECONNECTED AFTER NEW CEILING IS INSTALLED.

NEW LIGHTING SCHEDULE		
Label	Catalog Number	Description
'A'	'COOPER LIGHTING' CORRELATE CONTINUA CTA OR APPROVED EQUAL	LED LUMINAIRE 1'x4' 4000K 120V INPUT SUSPENDED MOUNTED DISTRIBUTION: 75% UP / 25% DOWN SPLIT INSTALLED AT 16" BELOW CEILING HEIGHT
'B'	NOT USED	
'C'	'COOPER LIGHTING' METALUX WSKLED OR APPROVED EQUAL	PREMIUM WRAPAROUND LED LUMINAIRE 1'x4' 4000K 120V INPUT SURFACE MOUNTED



1 SECOND FLOOR - NEW LAYOUT
E-6 SCALE 1:100

NO.	ISSUANCES & REVISIONS	DATE
3	FOR RE-PERMIT / RE-TENDER	MAR 15, 2022
2	FOR PERMIT / TENDER	MAY 6, 2021
1	FOR COORDINATION	APR 20, 2021



ALL DRAWINGS, DESIGNS AND RELATED DOCUMENTS ARE THE PROPERTY OF PNF ENGINEERING INC. AND MUST BE RETURNED ON REQUEST. REPRODUCTION OF THIS DRAWING AND ANY RELATED DOCUMENTS IN PART OR IN WHOLE IS FORBIDDEN.
THESE DRAWINGS WERE PREPARED FOR BUILDING PERMIT AND AS A GENERAL CONSTRUCTION GUIDE. ANY MAJOR DISCREPANCIES WHICH ARE EXPOSED AFTER DEMOLITION SHALL BE REPORTED TO THE OWNER REPRESENTATIVE AND ENGINEERS PRIOR TO COMMENCEMENT OF ANY WORK.
THESE DRAWINGS ARE NOT TO BE SCALED.

Project Address : 1522 MOUNTAIN GROVE AVE. BURLINGTON, ONTARIO, L7R 2H2

Project Description : ROLLING MEADOWS PUBLIC SCHOOL RENOVATIONS

Drawing Description : SECOND FLOOR CEILING NEW LAYOUT

Designed: N.P.

Checked: Y.N.

Scale: AS SHOWN

Date: JAN 2021

PNF Project No. 20041

Dwg.No. E-6

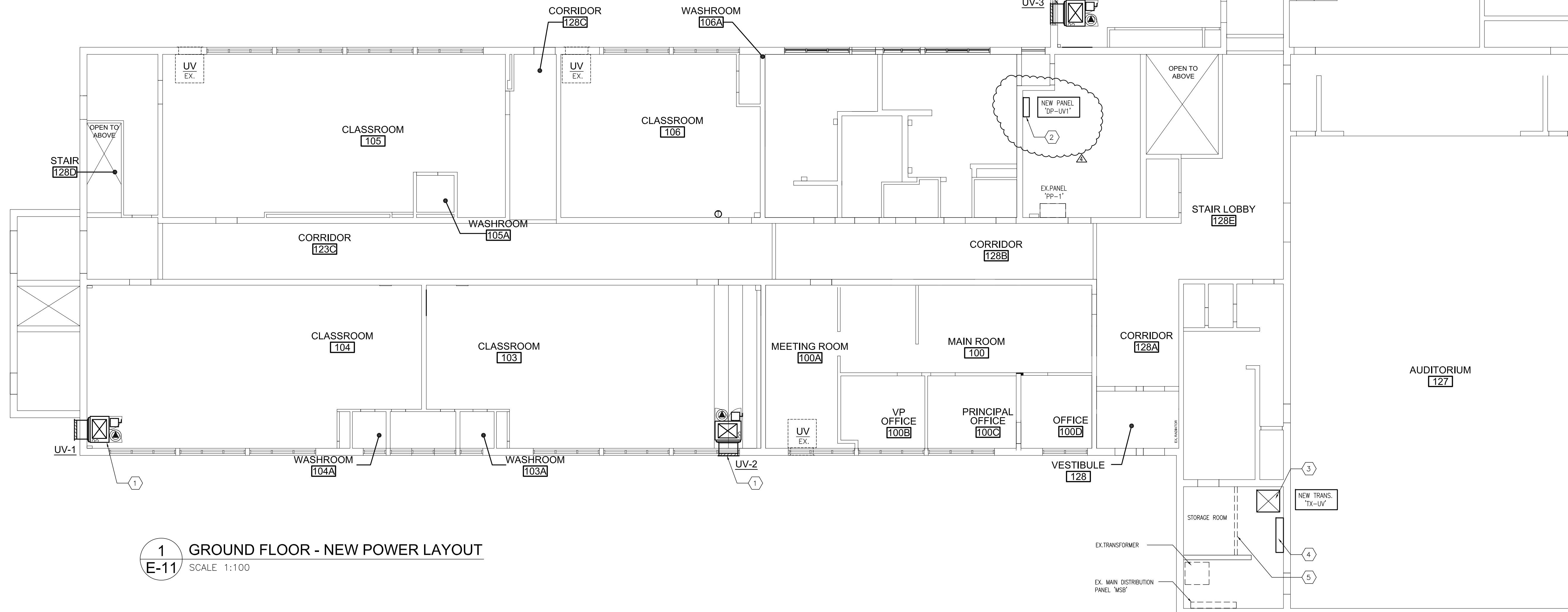
GENERAL NOTES

1. CONTRACTOR TO VERIFY ALL EXISTING SITE CONDITIONS INCLUDING SIZES AND EQUIPMENT PRIOR TO ORDERING.
2. MAKE GOOD ALL SURFACES AFTER COMPLETION OF WORK.
3. REMOVE ALL DEBRIS AND RUBBISH FROM SITE DAILY.
4. RELOCATE EXISTING SERVICES AS REQUIRED TO ALLOW FOR NEW EQUIPMENT INSTALLATION (LIGHTING FIXTURES, CONDUITS, ETC.)
5. PROVIDE LOCAL NON-FUSED DISCONNECT SWITCHES IN ACCORDANCE WITH ONTARIO ELECTRICAL SAFETY CODE
6. CONFIRM ELECTRICAL REQUIREMENTS AND EXACT LOCATION OF ALL MECHANICAL EQUIPMENT WITH MECHANICAL CONTRACTOR PRIOR TO ORDERING AND INSTALLATION
7. CONFIRM BREAKER/FUSE AND/OR DISCONNECT PRIOR TO ORDERING DISTRIBUTION
8. PROVIDE FEEDERS IN EMT CONDUITS FROM DISTRIBUTION PANEL/MCC TO MECHANICAL EQUIPMENT. EXACT ROUTE(S) SHALL BE DETERMINED ON SITE
9. ALL CONDUITS, FITTINGS AND CONNECTORS LOCATED OUTSIDE MUST BE RAIN TYPE RATED
10. INFORMATION PROVIDED ON DRAWINGS BASED ON VISUAL SITE INSPECTION. IT IS CONTRACTOR'S RESPONSIBILITY TO CONDUCT A SITE REVIEW PRIOR TO PRICING TO BECOME FAMILIAR WITH THE SITE CONDITIONS, VERIFY ALL LOCATIONS, SIZES AND CONNECTIONS ON SITE AND REPORT ANY DISCREPANCY TO THE CONSULTANT WITH PROPOSED RESOLUTION AND OBTAIN CONSULTANT'S APPROVAL
11. RE-ARRANGE EXISTING MCC SECTIONS, DISCONNECT SWITCHES, DISTRIBUTION PANEL CIRCUIT BREAKERS AND CIRCUITS AS REQUIRED TO ALLOW FOR NEW INSTALLATION
12. REMOVE ALL UNUSED ELECTRICAL EQUIPMENT AND WIRING

DRAWING NOTES

- 1 PROVIDE NEW POWER CONNECTION AND DISCONNECT SWITCH FOR NEW UNIT. RUN NEW WIRING BACK TO PANEL. REFER TO EQUIPMENT SCHEDULE FOR DETAILS. COORDINATE WITH MECHANICAL CONTRACTOR FOR EXACT EQUIPMENT LOCATION AND TERMINATION POINTS.
- 2 PROPOSED LOCATION OF NEW ELECTRICAL PANEL. EXACT LOCATION SHALL BE CONFIRMED ON SITE. REFER TO ARCHITECTURAL DRAWINGS FOR PANEL ENCLOSURE. TYPICAL FOR 2
- 3 PROPOSED LOCATION OF NEW FLOOR MOUNTED STEP DOWN TRANSFORMER. TRANSFORMER SHALL BE INSTALLED ON NEW 4" HIGH CONCRETE PAD. EXACT LOCATION SHALL BE CONFIRMED ON SITE.
- 4 PROPOSED LOCATION OF NEW DISCONNECT SWITCH AND SPLITER. EXACT LOCATION SHALL BE CONFIRMED ON SITE.
- 5 PROVIDE NEW CHAINLINK FENCE MINIMUM 8 FT. HIGH COMPLETE WITH ACCESS DOOR AND PADLOCK.

FOR CONTINUATION SEE DRAWING E-12



1 GROUND FLOOR - NEW POWER LAYOUT
E-11 SCALE 1:100

NO.	ISSUANCES & REVISIONS	DATE
3	FOR ADDENDUM	APR 20, 2022
3	FOR RE-PERMIT / RE-TENDER	MAR 15, 2022
2	FOR PERMIT / TENDER	MAY 6, 2021
1	FOR COORDINATION	APR 20, 2021



ALL DRAWINGS, DESIGNS AND RELATED DOCUMENTS ARE THE PROPERTY OF PNF ENGINEERING INC. AND MUST BE RETURNED ON REQUEST. REPRODUCTION OF THIS DRAWING AND ANY RELATED DOCUMENTS IN PART OR IN WHOLE IS FORBIDDEN.

THESE DRAWINGS WERE PREPARED FOR BUILDING PERMIT AND AS A GENERAL CONSTRUCTION GUIDE. ANY MAJOR DISCREPANCIES WHICH ARE EXPOSED AFTER DEMOLITION SHALL BE REPORTED TO THE OWNER REPRESENTATIVE AND ENGINEERS PRIOR TO COMMENCEMENT OF ANY WORK.

THESE DRAWINGS ARE NOT TO BE SCALED.

Project Address : 1522 MOUNTAIN GROVE AVE. BURLINGTON, ONTARIO, L7R 2H2

Project Description : ROLLING MEADOWS PUBLIC SCHOOL RENOVATIONS

Drawing Description : GROUND FLOOR NEW POWER LAYOUT

Designed: N.P.
Checked: Y.N.
Scale: AS SHOWN
Date: JAN 2021

PNF Project No. 20041
Dwg.No. **E-11**

MECHANICAL EQUIPMENT SCHEDULE

TAG	DESCRIPTION	LOCATION	HP	MCA (A)	VOLTS	PHASE	FEED FROM	MOP (A)	POLES	CONDUCTOR SIZE	CONDUIT SIZE	REMARKS
AHU-1	AHU	ROOF	-	53	575	3	MAIN ELECTRICAL ROOM	60	3	4#4	2"	
AHU-2	AHU	ROOF	-	53	575	3	MAIN ELECTRICAL ROOM	60	3	4#4	2"	
ERV-1	ERV	ROOF	-	28	575	3	MAIN ELECTRICAL ROOM	30	3	4#10	1"	
ERV-2	ERV	ROOF	-	22	575	3	MAIN ELECTRICAL ROOM	25	3	4#10	1"	
UV-1	UNIT VENTILATOR	CLASSROOM	1/2	16.7	208	3	PANEL 'UV-1'	20	3	4#12	3/4"	
UV-2	UNIT VENTILATOR	CLASSROOM	1/2	16.7	208	3	PANEL 'UV-1'	20	3	4#12	3/4"	
UV-3	UNIT VENTILATOR	CLASSROOM	1/2	16.7	208	3	PANEL 'UV-1'	20	3	4#12	3/4"	
UV-4	UNIT VENTILATOR	CLASSROOM	1/2	16.7	208	3	PANEL 'UV-1'	20	3	4#12	3/4"	
UV-5	UNIT VENTILATOR	CLASSROOM	1/2	16.7	208	3	PANEL 'UV-1'	20	3	4#12	3/4"	
UV-6	UNIT VENTILATOR	CLASSROOM	1/2	16.7	208	3	PANEL 'UV-1'	20	3	4#12	3/4"	
UV-7	UNIT VENTILATOR	CLASSROOM	1/2	16.7	208	3	PANEL 'UV-1'	20	3	4#12	3/4"	
UV-8	UNIT VENTILATOR	CLASSROOM	1/2	16.7	208	3	PANEL 'UV-2'	20	3	4#12	3/4"	
UV-9	UNIT VENTILATOR	LIBRARY	3/4	28.0	208	3	PANEL 'UV-2'	40	3	4#8	1-1/2"	
UV-10	UNIT VENTILATOR	LIBRARY	3/4	28.0	208	3	PANEL 'UV-2'	40	3	4#8	1-1/2"	
B-1	BOILER	BOILER ROOM	-	10	120	1	HOUSE PANEL IN BOILER ROOM	20	1	2#12	3/4"	
P-1	PRIMARY LOOP PUMP	BOILER ROOM	2	-	230	1	HOUSE PANEL IN BOILER ROOM	20	2	2#12	3/4"	
P-2 (STAND-BY)	PRIMARY LOOP PUMP	BOILER ROOM	2	-	230	1	HOUSE PANEL IN BOILER ROOM	20	2	2#12	3/4"	
P-3	HEATING PUMP	BOILER ROOM	5	-	575	3	ELECTRICAL ROOM	15	3	3#12	3/4"	
P-4 (STAND-BY)	HEATING PUMP	BOILER ROOM	5	-	575	3	ELECTRICAL ROOM	15	3	3#12	3/4"	
BP-1	BOILER PUMP	BOILER ROOM	2	-	230	1	HOUSE PANEL IN BOILER ROOM	15	2	2#12	3/4"	

- PROVIDE LOCAL NON-FUSED DISCONNECT SWITCHES IN ACCORDANCE WITH LATEST EDITION OF ONTARIO ELECTRICAL SAFETY CODE
- CONFIRM ELECTRICAL REQUIREMENTS AND EXACT LOCATION OF ALL MECHANICAL EQUIPMENT WITH MECHANICAL CONTRACTOR PRIOR TO ORDERING AND INSTALLATION.
- CONFIRM BREAKER/FUSE AND/OR DISCONNECT PRIOR TO ORDERING.
- PROVIDE FEEDERS IN EMT CONDUITS FROM DISTRIBUTION PANEL/MCC TO MECHANICAL EQUIPMENT. EXACT ROUTE(S) SHALL BE DETERMINED ON SITE.
- ALL FINAL CONNECTIONS TO MECHANICAL EQUIPMENT SHALL BE IN LIQUID TIGHT FLEXIBLE CONDUIT.
- INFORMATION PROVIDED ON DRAWINGS BASED ON VISUAL SITE INSPECTION. IT IS CONTRACTOR'S RESPONSIBILITY TO CONDUCT A SITE PREVIEW PRIOR TO PRICING TO BECOME FAMILIAR WITH THE SITE CONDITIONS, VERIFY ALL LOCATIONS, SIZES AND CONNECTIONS ON SITE AND REPORT ANY DISCREPANCY TO THE CONSULTANT WITH PROPOSED RESOLUTION AND OBTAIN CONSULTANT'S APPROVAL.
- RE-ARRANGE EXISTING DISCONNECT SWITCHES, DISTRIBUTION PANEL CIRCUIT BREAKERS AND CIRCUITS AS REQUIRED TO ALLOW FOR NEW INSTALLATION.
- REMOVE ALL REDUNDANT EQUIPMENT AND WIRING.
- RELOCATE EXISTING SERVICES TO ALLOW FOR NEW EQUIPMENT INSTALLATION.

NEW DISTRIBUTION PANEL 'DP-UV1'

120/208V/3 PHAW, 225 A
 ■ SURFACE MOUNTED
 ■ INSULATED GROUND BUS
 C/W MAIN BREAKER

DESCRIPTION	LOAD	BKR	CCT	CCT	BKR	LOAD	DESCRIPTION
UV-1	20	3P	1	A	2	20	UV-3
			3	B	4		
			5	C	6	3P	
UV-2	20	3P	7	A	8	20	UV-4
			9	B	10		
			11	C	12	3P	
UV-7	20	3P	13	A	14	20	UV-8
			15	B	16		
			17	C	18	3P	
BAS CONNECTION	15	19	A	20	15	BAS CONNECTION	
BAS CONNECTION	15	21	B	22	15	BAS CONNECTION	
GFI RECEPTACLE (AHU-2)	20	23	C	24	15	SPARE	
GFI RECEPTACLE (ERV-2)	20	25	A	26	15	SPARE	
			27	B	28	15	SPARE
			29	C	30	15	SPARE

NOTES:
 EXACT CIRCUIT BREAKER AND POWER REQUIREMENT FOR UNIT VENTILATORS SHALL BE CONFIRMED WITH EQUIPMENT MANUFACTURER

NEW DISTRIBUTION PANEL 'DP-UV2'

120/208V/3 PHAW, 225 A
 ■ SURFACE MOUNTED
 ■ INSULATED GROUND BUS
 C/W MAIN BREAKER

DESCRIPTION	LOAD	BKR	CCT	CCT	BKR	LOAD	DESCRIPTION
UV-5	20	3P	1	A	2	20	UV-6
			3	B	4		
			5	C	6	3P	
UV-9	45	3P	7	A	8	45	UV-10
			9	B	10		
			11	C	12	3P	
BAS CONNECTION	15	13	A	14	15	BAS CONNECTION	
BAS CONNECTION	15	15	B	16	15	BAS CONNECTION	
GFI RECEPTACLE (AHU-1)	20	17	C	18	15	SPARE	
GFI RECEPTACLE (ERV-1)	20	19	A	20	15	SPARE	
			21	B	22	15	SPARE
			23	C	24	15	SPARE
			25	A	26		
			27	B	28		
			29	C	30		

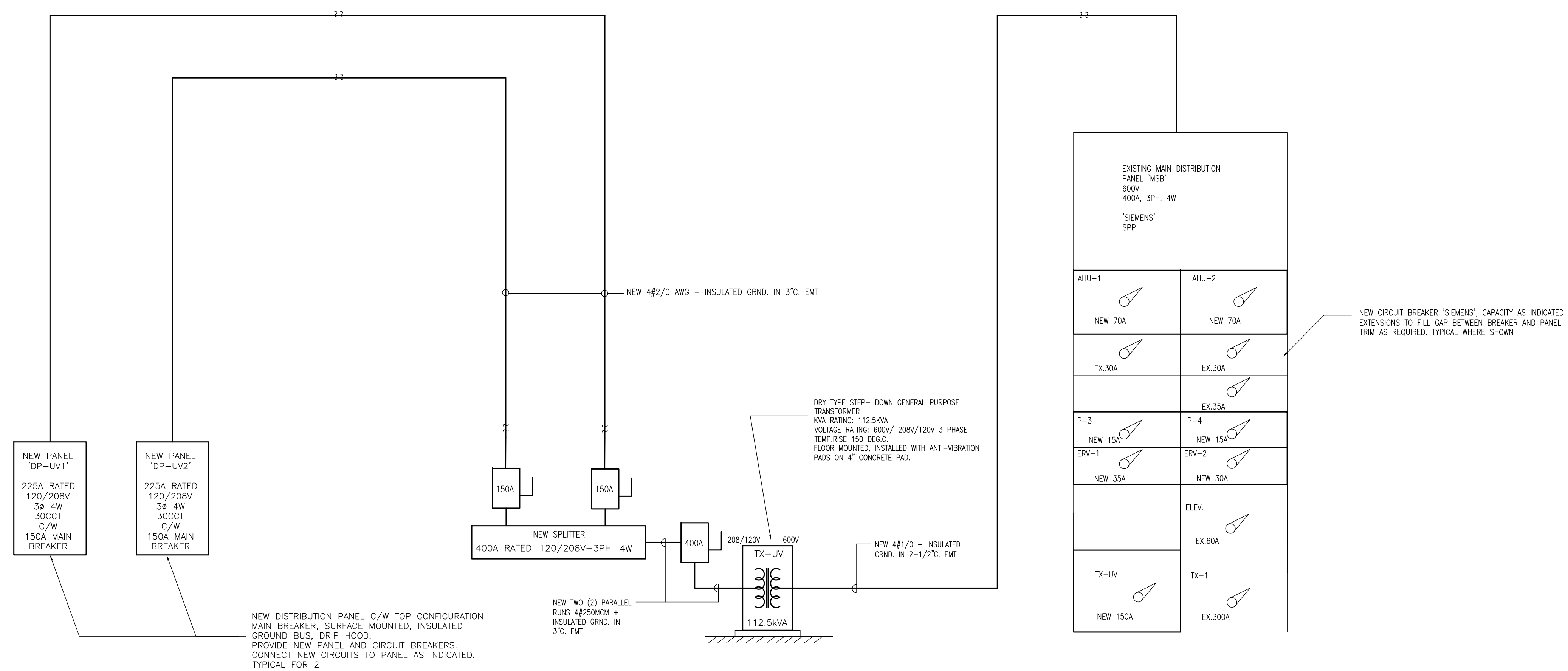
NOTES:
 EXACT CIRCUIT BREAKER AND POWER REQUIREMENT FOR UNIT VENTILATORS SHALL BE CONFIRMED WITH EQUIPMENT MANUFACTURER

NO.	ISSUANCES & REVISIONS	DATE
3	FOR ADDENDUM	APR 20, 2022
3	FOR RE-PERMIT / RE-TENDER	MAR 15, 2022
2	FOR PERMIT / TENDER	MAY 6, 2021
1	FOR COORDINATION	APR 20, 2021



NOTES

- DISTRIBUTION PANELS SHALL BE INSTALLED ON 3/4" FIRE RETARDANT PLYWOOD BOARD.
- FOR SPRINKLED AREAS USE PANELS C/W DRIP HOOD. ANY CONDUIT PENETRATIONS ON THE TOP OF PANEL SHALL BE C/W LIQUID TIGHT FITTINGS.
- PANEL SCHEDULE SHOWN IS DIAGRAMATIC ONLY. CONTRACTOR TO REARRANGE CIRCUITS AS NECESSARY TO BALANCE PHASES WITHIN 5% BETWEEN.
- EACH PANEL BOARD SHALL BE COMPLETE WITH A DIRECTORY GIVING THE NUMBER AND DESCRIPTION OF EACH CIRCUIT CONTROLLED. THE DIRECTORIES SHALL BE CLEARLY TYPED, LEGIBLE AND OF SAMPLE SIZE AND SHALL BE MOUNTED IN A METAL FRAME WITH A CLEAR PLASTIC COVER ON THE INSIDE OF THE DOOR.



ALL DRAWINGS, DESIGNS AND RELATED DOCUMENTS ARE THE PROPERTY OF "PNF ENGINEERING INC." AND MUST BE RETURNED ON REQUEST. REPRODUCTION OF THIS DRAWING AND ANY RELATED DOCUMENTS IN PART OR IN WHOLE IS FORBIDDEN.

THESE DRAWINGS WERE PREPARED FOR BUILDING PERMIT AND AS A GENERAL CONSTRUCTION GUIDE. ANY MAJOR DISCREPANCIES WHICH ARE EXPOSED AFTER DEMOLITION SHALL BE REPORTED TO THE OWNER REPRESENTATIVE AND ENGINEERS PRIOR TO COMMENCEMENT OF ANY WORK.

THESE DRAWINGS ARE NOT TO BE SCALED.

Project Address : 1522 MOUNTAIN GROVE AVE, BURLINGTON, ONTARIO, L7R 2H2

Project Description : ROLLING MEADOWS PUBLIC SCHOOL RENOVATIONS

Drawing Description : EQUIPMENT SCHEDULE AND SINGLE LINE DIAGRAM

Designed: N.P.
 Checked: Y.N.
 Scale: AS SHOWN
 Date: JAN 2021

PNF Project No. 20041
 Dwg.No. E-13