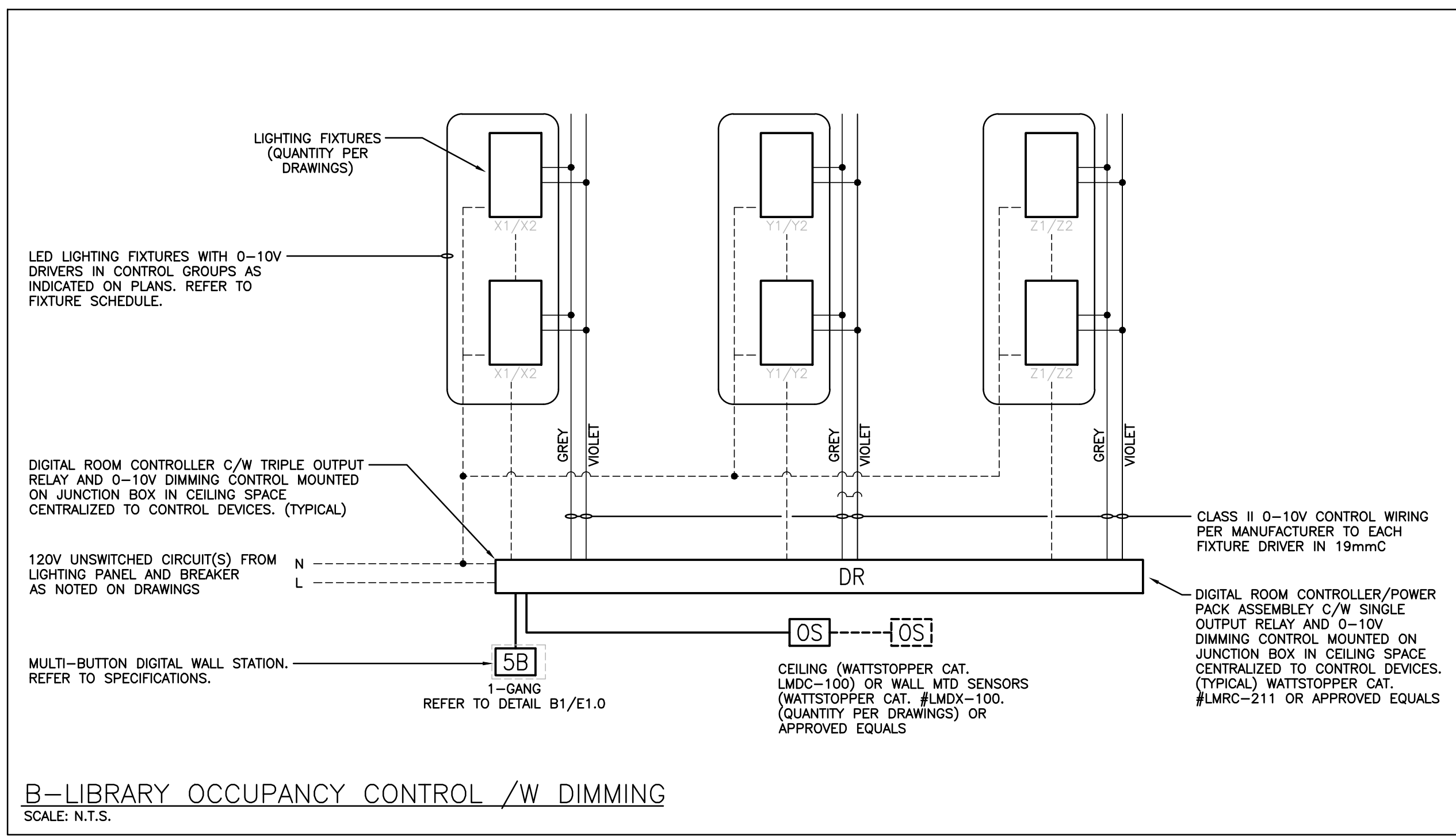


A diagram of a rectangular button faceplate. The top half contains the text 'ON' and the bottom half contains the text '(X2)'. A line points from the label 'BUTTON LABEL (ENGRAVED)' to the 'ON' text. Another line points from the label 'REFERENCE (NOT ENGRAVED)' to the '(X2)' text. Below the diagram is the caption 'TYPICAL BUTTON ENGRAVING'.

[illegible]

The contractor shall verify all dimensions and report all errors and discrepancies to the Consultant before commencement of work.

The drawings show general arrangement of services. Follow as closely as actual building construction will permit. Obtain approval for relocation of service from Consultant before commencement of the work.

The drawings do not indicate all offsets fitting and accessories which may be required. Provide the same to meet the required conditions.

Drawings and specifications, etc., prepared and issued by the consultant are the property of the consultant and must be returned to the consultant upon completion of these documents are not to be duplicated or copied without the consent of the Consultant.

Do not use this drawing.

© 2021 DEI & Associates Inc.


CLIENT:
WATERLOO REGION
DISTRICT SCHOOL BOARD
Tender No. 7188-KP-21

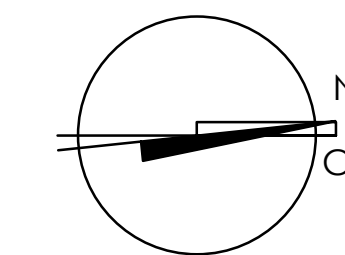
PROJECT: 22061
A/C UPGRADES AND WINDOW REPLACEMENTS

ST. JACOBS PUBLIC SCHOOL

72 QUEENSWAY DR.
ST. JACOBS, ON
N0B 2N0

ORIGINAL PAGE SIZE ARCH D - 24" x 36"

KEY TO DETAIL LOCATION:
 A - DETAIL NO.
 B - DETAIL NO. ORIGIN



KEYPIAN | LEGEND SCHEDULES & DETAILS

E1.0

DRAWN BY : _____ CHECKED BY : _____



- 1 ALL ELECTRICAL DEVICES LOCATED WITHIN BORDERED AREA ON CEILING TO BE REMOVED FOR THE DEMOLITION OF CEILING TILES. ALL DEVICES AND WIRING TO BE REINSTALLED AFTER CEILING WORK IS COMPLETED. CEILING TILES NOT SHOWN.
- 2 INDICATES MECHANICAL UNIT BEING REMOVED BY MECHANICAL DIVISION. THIS CONTRACTOR IS TO DISCONNECT AND REMOVE FEEDER BACK TO SOURCE. DISCONNECT AND REMOVE ALL CONTROL DEVICES. LABEL SOURCE BREAKER AS SPARE
- 3 LIGHTING WITHIN AREA TO BE REMOVED. EXISTING LIGHTING CIRCUIT AND CONTROLS TO REMAIN FOR CONNECTION TO NEW FIXTURES AS SHOWN ON RENOVATION.
- 4 INDICATES LIGHT FIXTURES AND CONTROLS TO BE REMOVED. EXISTING LIGHTING CIRCUIT TO REMAIN FOR CONNECTION TO NEW FIXTURES AND CONTROLS PER RENOVATION PLANS.

[illegible]

DEI
Consulting Engineers 

MECHANICAL | ELECTRICAL | AQUATIC

55 Northland Road, Waterloo, ON N2V 1Y8
Phone: 519-725-3555 Fax: 519-725-2515
Website: deiassociates.ca
Project Number: 20295

The contractor shall verify all dimensions and report all errors and discrepancies to the Consultant before commencement of the work.

The drawings shall show the arrangement of services. Follow as closely as actual building construction will permit. Obtain approval for relocation of service from Consultant before commencement of the work.

The Drawings do not indicate all offsets fitting and accessories which may be required. Provide the same to the Consultant for the required information.

Drawings and specifications, etc., prepared and issued by the consultant are the property of the consultant and must be returned at the completion of the project. The drawings and documents are not to be duplicated or copied without the consent of the Consultant.

Do not scale this drawing.

© 2021 DEI & Associates Inc.

CLIENT:
WATERLOO REGION
DISTRICT SCHOOL BOARD


Tender No. 7188-KP-21

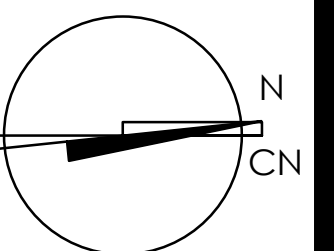
PROJECT: 22061
A/C UPGRADES AND WINDOW REPLACEMENTS

ST. JACOBS PUBLIC SCHOOL

72 QUEENSWAY DR.
ST. JACOBS, ON
N0B 2N0

ORIGINAL PAGE SIZE ARCH D - 24" x 36"

KEY TO DETAIL LOCATION:
 A - DETAIL NO.
 B - DETAIL NO. ORIGIN

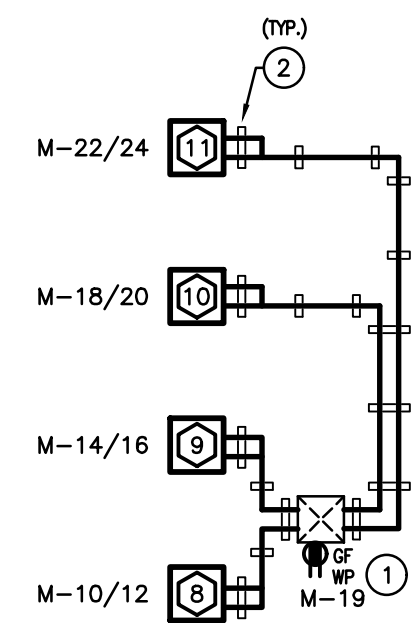


MAIN LEVEL - DEMOLITION

E1.1

DRAWN BY :

HECKED BY :



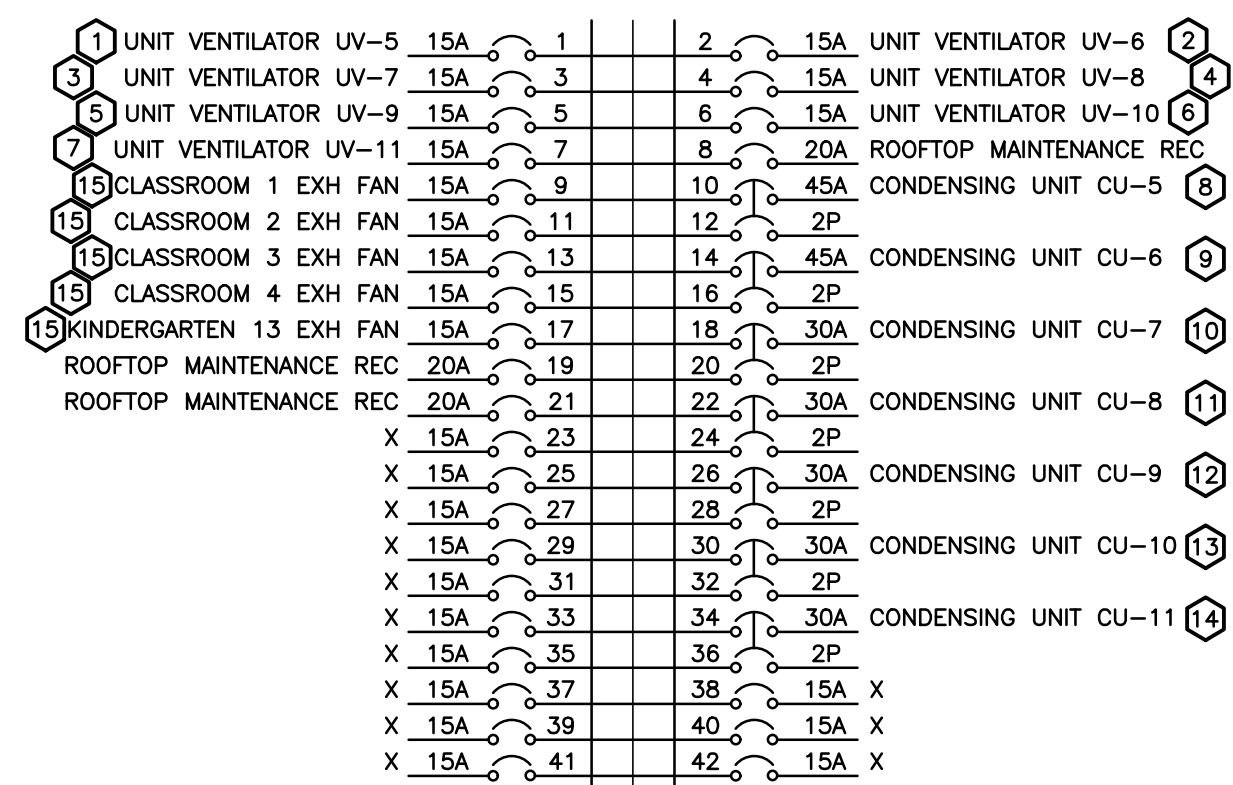
SCALE: 1:100

SCALE: NTS

CHECKED BY :

VOLTAGE: 120/240 VOLTS
PHASE: 1P, 3W
MAINS: 225A
NEUTRAL BUS: FULL
MOUNTING: SURFACE
NOTES: C/W SPRINKLER HOOD

THE CONTRACTOR IS TO COORDINATE ROOM NAMES AND NUMBERS NOTED WITH THE FINAL ROOM INFORMATION ISSUED DURING CONSTRUCTION AND ADJUST DIRECTORIES TO SUIT.



NOTE: THE INDICATED PANEL ASSEMBLY MUST HAVE AN INTERRUPTING CAPACITY OF 11000 A. PROVIDE BY EITHER FULLY RATED BREAKERS OR INTEGRATED EQUIPMENT RATING WITH THE UPSTREAM BREAKER.

Item	Manufacturer/Catalog Number	Voltage	Lamp	Mounting	Description
A	LITHONIA CAT. #GTL-4-33L-EZ1-LP840 METALUX CAT. #14GR-LD5-32-F1-120V-L835-CD1-U C/W SK-14-WT	120V	LED 3300 LUMENS 4000K 28.4W	SURFACE	1X4 LED TROFFER C/W PATTERN 12 LENS AND WHITE FINISH. PROVIDE SURFACE MOUNTING KIT.
B	LITHONIA CAT. #2GTL-4-40L-MVOLT-EZ1-LP840 COOPER CAT. #24-GR-LD5-38-A125-UNV-L840-CD-1	120V	LED 4000 LUMENS 4000K 38.9W	RECESSED	2X4 (610mmX1220mm) LED TROFFER C/W PATTERN 12 LENS AND WHITE FINISH.
B1	LITHONIA CAT. #2GTL-4-30L-MVOLT-EZ1-LP840 COOPER CAT. #24-GR-LD5-30-A125-UNV-L840-CD-1	120V	LED 3000 LUMENS 4000K 23.3W	RECESSED	SIMILAR TO FIXTURE TYPE 'B' BUT WITH LOWER LUMEN PACKAGE.
C	COOPER CAT. #S122DR-S-48SD840-8-40-ETG-4FD-1-U-DD-A-X MAXX LIGHTING CAT. #S34L-LDP-4FT-RP-TG-80CRI-400-400LMF-MN1-120	120V	LED 400 LM/FT 3000K 4.8W/FT	RECESSED	4' (1240mm) LINEAR RECESSED DIRECT FIXTURE C/W ASYM FLUSH OPTIC AND 0-10V DIMMING. FINISH TO SUIT ARCHITECT.
EXIT LIGHTS (SELF-POWERED)	BEGHELLI QRMSPLUMWOLR EMERGILITE CAT. #EAXWSF LUMACELL CAT. #LAXWS STANPRO CAT. #RXLLOWHIB AIMLITE CAT. #RPALUMWHITB READY-LITE CAT. #RA-W-SP-UDO	12V/120V	LED 2.5 WATT (MAX)AC 2 WATT (MAX)DC	SURFACE	LED EXTRUDED ALUMINUM PICTOGRAM FIXTURE C/W GREEN FACE AND WHITE LEGEND, UNIVERSAL MOUNTING TO SUIT WALL, END OR CEILING, MAXIMUM 63mm (2.5") THICKNESS AND 12V INTERNAL SEALED RECHARGEABLE BATTERY PROVIDING MINIMUM 30 MINUTES OF EMERGENCY POWER
EMERG. LIGHTS	BEGHELLI CAT. #SR-1QLED & SR-2QLED LUMACELL CAT. #MQM1LD7 & MQM2LD7 EMERGILITE CAT. #EF10LG & EF100LG STANPRO CAT. #N112V4WLJ & N213V4WLJ AIMLITE CAT. #RMSM1124WLJWHIT & RMSM2124WLJWHIT READY-LITE CAT. #R-M-1-LD7 & R-M-2-LD7	12V	LED 4W NR16	SURFACE	LED FIXTURE C/W COMPACT DESIGN WITH VARIABLE LIGHT PATTERN, WHITE COLOUR AND 360° ROTATION.

Electrical Item	Description	Provided by	Data		Starter			Control Device			Isolating Device		Remote Items								Interlock		Remarks								
			Size hp/kW/Amps	Phase	Magnetic	Manual	Contact	Combination	Variable Frequency Drive	Hand/Off/Auto On/Off	Selector Start/Stop Pilot	High/Low/Off	Pilot Light	Disconnect	LP Disconnect	Bkr/Fuse	Starter/Device Wired By	Thermostat	RA	Time Clock	Var.Speed	Cont. Relay	Relaid Sw c/w Pilot Light	Dual Voltage Relay	Control Panel	Wired by	Tag Auto System	Wired by	Interlock To	Interlock By	Description
1	UNIT VENTILATOR UV-5	M 120	6.3 MCA	1								F	F	F	E	M									M	M	M	8	M	LIBRARY	
2	UNIT VENTILATOR UV-6	M 120	6.3 MCA	1								F	F	F	E	M									M	M	M	9	M	ADMIN/GEN. OFFICE	
3	UNIT VENTILATOR UV-7	M 120	6.3 MCA	1								F	F	F	E	M									M	M	M	10	M	CLASSROOM 1	
4	UNIT VENTILATOR UV-8	M 120	6.3 MCA	1								F	F	F	E	M									M	M	M	11	M	CLASSROOM 2	
5	UNIT VENTILATOR UV-9	M 120	6.3 MCA	1								F	F	F	E	M									M	M	M	12	M	CLASSROOM 3	
6	UNIT VENTILATOR UV-10	M 120	6.3 MCA	1								F	F	F	E	M									M	M	M	13	M	CLASSROOM 4	
7	UNIT VENTILATOR UV-11	M 120	6.3 MCA	1								F	F	F	E	M									M	M	M	14	M	KINDERGARTEN CLASSROOM 13	
8	CONDENSING UNIT CU-5	M 240	26.2 MCA	1									E	F	E														1	M	LIBRARY
9	CONDENSING UNIT CU-6	M 240	26.2 MCA	1									E	F	E													2	M	ADMIN/GEN. OFFICE	
10	CONDENSING UNIT CU-7	M 240	18.6 MCA	1									E	F	E														3	M	
11	CONDENSING UNIT CU-8	M 240	18.6 MCA	1									E	F	E														4	M	
12	CONDENSING UNIT CU-9	M 240	18.6 MCA	1									E	F	E														5	M	
13	CONDENSING UNIT CU-10	M 240	18.6 MCA	1									E	F	E														6	M	
14	CONDENSING UNIT CU-11	M 240	18.6 MCA	1									E	F	E														7	M	
15	EXHAUST FAN EF-101	M 120	FHP	1								F		E	E					E				E							

1 ALL DISTRIBUTION EQUIPMENT ARE TO BE PROVIDED WITH WARNING LABELS CONFORMING
TO THE ONTARIO ELECTRICAL SAFETY CODE RULE #2-300(1),(2)

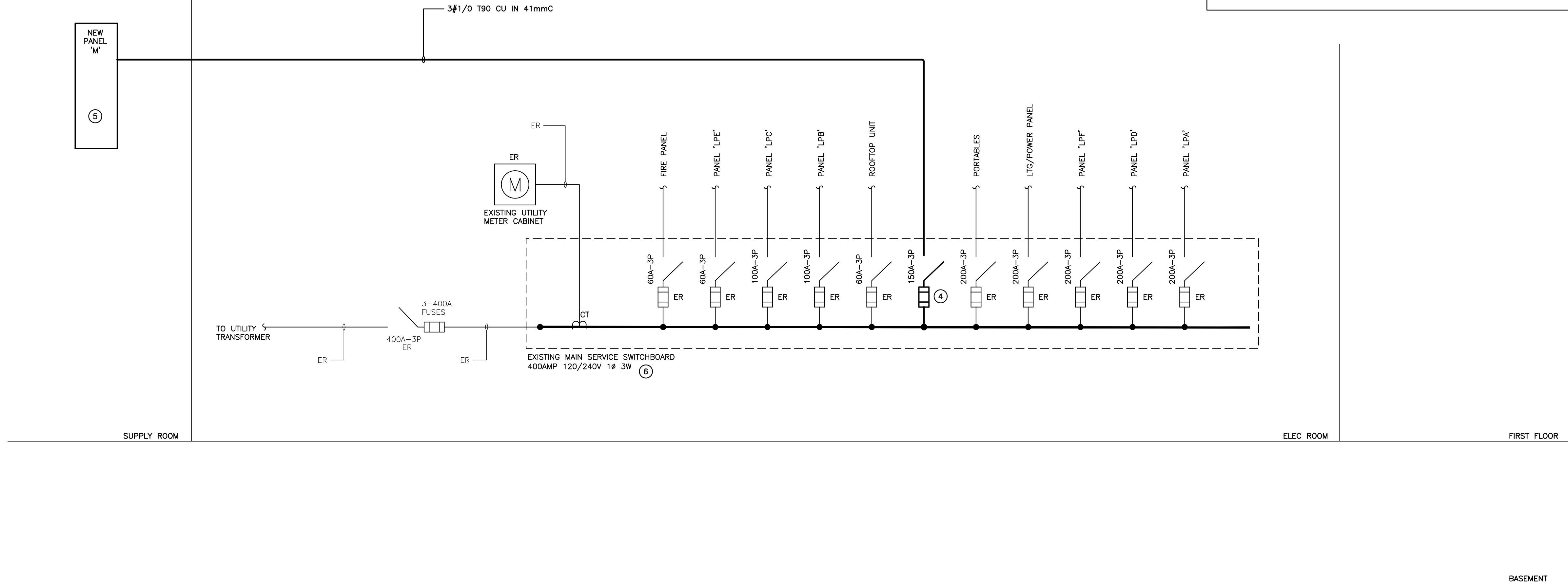
2 INSTALL GROUND WIRE TO SUIT THE ELECTRICAL SAFETY CODE IN ALL CONDUIT.

3 ALL NOTED FEEDERS ARE FOR OVERHEAD RUNS OF CONDUIT. IF THE CONTRACTOR WISHES
TO FEED UNDERGROUND, THE FEEDER MUST BE REVISED. THE CONTRACTOR IS TO
PROPOSE REVISIONS TO THE CONSULTANT FOR PRE-APPROVAL

4 INDICATES NEW FUSED SWITCH TO REPLACE EXISTING SPARE 60A-3P SWITCH WITHIN
SWITCHBOARD. KVA RATING TO MATCH OTHER EXISTING SWITCHES WITHIN SWITCHBOARD.

5 INDICATES NEW 420CT PANEL AS PER THE SPECIFICATION. REFER TO PANEL SCHEDULE
ON DRAWING E3.1

6 EXISTING SWITCHBOARD IS A FEDERAL PIONEER QM06 120/240V 1ø 3W 400A.



SCALE: NTS

NO.	DATE	PARTICULAR
1	21.03.17	ISSUED FOR OWNER REVIEW
2	21.04.19	ISSUED FOR OWNER REVIEW
3	21.04.23	ISSUED FOR PERMIT AND TENDER



The contractor shall verify all dimensions and report all errors and discrepancies to the Consultant before commencement of the work.

The drawings shall show the arrangement of services. Following closely as actual building construction will permit. Obtain approval for relocation of service from Consultant before commencement of work.

The drawings do not indicate all offsets fitting and accessories which may be required. Provide the same to the Consultant for approval.

Drawings and specifications, etc., prepared and issued by the consultant are the property of the consultant and must be returned to the consultant upon completion of the project. These documents are not to be duplicated or copied without the consent of the Consultant.


Do not scale this drawing.

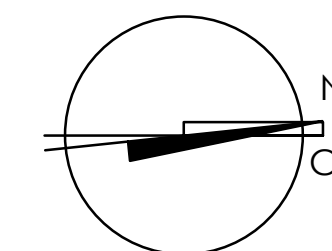
2021 DEI & Associates, Inc.

WATERLOO REGION
DISTRICT SCHOOL BOARD

PROJECT:	22061
A/C UPGRADES AND WINDOW REPLACEMENTS	

72 QUEENSWAY DR.
ST. JACOBS, ON
N0B 2N0

KEY TO DETAIL LOCATION:
 A - DETAIL NO.
 B - DETAIL NO. ORIGIN



PARTIAL DISTRIBUTION RISER DIAGRAM AND SCHEDULES

E3.1

DRAWN BY : _____ CHECKED BY _____

GENERAL NOTES

- ## PANEL BOARDS

- ## BASIC MATERIALS

- .1 JUNCTION, OUTLET AND PULL BOXES MUST BE APPROVED TO SUIT INSTALLATION METHODS AND ENVIRONMENT.
- .2 CONDUIT MUST BE CONCEALED UNLESS INSTALLED IN SERVICE OR STORAGE ROOMS.
- .3 CONDUIT MUST BE INSTALLED PARALLEL AND PERPENDICULAR TO BUILDING LINES IN A NEAT AND WORKMANLIKE MANNER.
- .4 ALL FEEDER AND BRANCH CIRCUIT WIRING MUST BE COPPER, T90 RATING/STYLE RUN IN EMT CONDUIT WITH INTERNAL INSULATED GREEN GROUND WIRE UNLESS NOTED OTHERWISE. MINIMUM WIRE SIZE SHALL BE #12 AND MINIMUM CONDUIT SIZE SHALL BE 3/4" (19mm).
- .5 AC90 CABLE MAY BE USED FOR BRANCH CIRCUIT WIRING IN STEEL STUD WALLS AND "DROPS" IN T-BAR CEILING AREAS TO LIGHT FIXTURES AND FIRE ALARM DEVICES. LENGTH OF DROP MUST BE LIMITED TO 8'-0" (2400mm).
- .6 WHERE DEVICES ARE TO BE INSTALLED ON EXISTING WALLS IN FINISHED AREA, WHICH CANNOT BE FISHED, INSTALL FEEDS IN A SURFACE METAL RACEWAY EQUAL TO WIREMOLD V700 SERIES.
- .7 COLOUR CODE CONDUITS, BOXES AND METALLIC SHEATHED CABLES.
- .8 CODE WITH PLASTIC TAPE OR PAINT AT POINTS WHERE CONDUIT OR CABLE ENTERS WALL, CEILING, OR FLOOR, AND AT 15m(45') INTERVALS.
- .9 COLOUR BANDS MUST BE 25mm(1") WIDE AND CODED AS FOLLOWS FOR NOTED SYSTEMS.

SYSTEM	COLOUR
UP TO 208v	YELLOW
DATA SYSTEM	ORANGE
PUBLIC ADDRESS	BLACK
FIRE ALARM	RED
EMERGENCY LIGHTING	PINK
- .10 THIS CONTRACTOR MUST PAINT ALL SYSTEM JUNCTION BOXES AND COVERS IN CONFORMANCE WITH THE ABOVE SCHEDULE.

DRAW BREAKDOWN

- .1 THIS CONTRACTOR MUST SUBMIT A BREAKDOWN OF THE TENDER PRICE INTO CLASSIFICATIONS TO THE SATISFACTION OF THE CONSULTANT, WITH THE AGGREGATE OF THE BREAKDOWN TOTALING THE TOTAL CONTRACT AMOUNT. EACH ITEM MUST BE BROKEN OUT INTO MATERIAL AND LABOUR COSTS. PROGRESS CLAIMS, WHEN SUBMITTED ARE TO BE ITEMIZED AGAINST EACH ITEM OF THE DRAW BREAKDOWN. THIS SHALL BE DONE IN TABLE FORM SHOWING CONTRACT AMOUNT, AMOUNT THIS DRAW, TOTAL TO DATE, % COMPLETE AND BALANCE.
- .2 BREAKDOWN SHALL BE AS FOLLOWS:
 - .1 PERMITS AND FEES
 - .2 MOBILIZATION (MAXIMUM 1%)
 - .3 DEMOLITION
 - .4 PANELBOARDS AND MISCELLANEOUS DISTRIBUTION EQUIPMENT
 - .5 FEEDER CONDUITS
 - .6 BRANCH CONDUITS
 - .7 FEEDER CABLES
 - .8 BRANCH WIRING
 - .9 LIGHTING FIXTURES
 - .10 FIRE ALARM SYSTEM
 - .11 STARTERS, CONTACTORS, AND CONTROL DEVICES
 - .12 WIRING FOR MECHANICAL EQUIPMENT
 - .13 CASH ALLOWANCES (ITEMIZED)
 - .14 COMMISSIONING (MINIMUM 3%)
- .3 THE BREAKDOWN MUST BE APPROVED BY THE CONSULTANT PRIOR TO SUBMISSION OF THE FIRST DRAW.
- .4 BREAKDOWNS NOT COMPLYING TO THE ABOVE WILL NOT BE APPROVED.
- .5 BREAKDOWN MUST INDICATE TOTAL CONTRACT AMOUNT.
- .6 MOBILIZATION AMOUNT MAY ONLY BE DRAWN WHEN ALL REQUIRED SHOP DRAWINGS HAVE BEEN REVIEWED BY THE CONSULTANT.

SHOP DRAWINGS AND PRODUCT DATA

1. FURNISH COMPLETE CATALOG DATA FOR MANUFACTURED ITEMS OF EQUIPMENT TO BE USED IN THE WORK TO CONSULTANT FOR REVIEW WITHIN 30 DAYS AFTER AWARD OF CONTRACT.
2. IF MATERIAL OR EQUIPMENT IS NOT AS SPECIFIED OR SUBMITTAL IS NOT COMPLETE, IT WILL BE REJECTED BY CONSULTANT.
3. ADDITIONAL SHOP DRAWINGS REQUIRED BY THE CONTRACTOR FOR MAINTENANCE MANUALS, SITE COPIES ETC., SHALL BE PHOTOCOPIES OF THE REVIEWED SHOP DRAWINGS. ALL COSTS TO PROVIDE ADDITIONAL COPIES OF SHOP DRAWINGS SHALL BE BORNE BY THE CONTRACTOR.
4. PARTIAL SUBMITTALS WILL NOT BE ACCEPTED.
5. CATALOG DATA OR SHOP DRAWINGS FOR EQUIPMENT, WHICH ARE NOTED AS BEING REVIEWED BY CONSULTANT OR HIS ENGINEER SHALL NOT SUPERSEDE CONTRACT DOCUMENTS.
6. SHOP COMMENTS OF CONSULTANT SHALL NOT RELIEVE THIS DIVISION FROM RESPONSIBILITY FOR DEVIATIONS FROM CONTRACT DOCUMENTS UNLESS CONSULTANT'S ATTENTION HAS BEEN CALLED TO SUCH DEVIATIONS IN WRITING AT TIME OF SUBMISSION, NOR SHALL THEY RELIEVE THIS DIVISION FROM RESPONSIBILITY FOR ERRORS IN ITEMS SUBMITTED.
7. CHECK WORK DESCRIBED BY CATALOG DATA WITH CONTRACT DOCUMENTS FOR DEVIATIONS AND ERRORS.
8. SHOP DRAWINGS AND PRODUCT DATA SHALL SHOW:
- 1. MOUNTING ARRANGEMENTS.
 - 2. OPERATING AND MAINTENANCE CLEARANCES, E.G. ACCESS DOOR SWING SPACES.
9. SHOP COMMENTS AND PRODUCT DATA SHALL BE ACCOMPANIED BY:
- 1. DETAILED DRAWINGS OF BASES, SUPPORTS, AND ANCHOR BOLTS.
 - 2. MANUFACTURER TEST DATA WHERE REQUESTED.
 - 3. MANUFACTURER TO CERTIFY AS TO CURRENT MODEL PRODUCTION.
 - 4. CERTIFICATION OF COMPLIANCE TO APPLICABLE CODES.
10. STATE SIZES, CAPACITIES, BRAND NAMES, MODEL HP, ACCESSORIES, MATERIALS, GAUGES, DIMENSIONS, AND OTHER PERTINENT INFORMATION. LIST ON CATALOG COVERS PAGE NUMBERS OF SUBMITTED ITEMS. UNDERLINE APPLICABLE DATA.
11. ONLY SHOP DRAWINGS AND SUBMITTALS REVIEWED OR REVIEWED AS NOTED FABRICATION, PRODUCTION, AND INSTALLATION MAY COMMENCE. NOTE: IF A SHOP DRAWING IS RETURNED "REVIEWED AS NOTED" THIS CONTRACTOR MUST PROVIDE WRITTEN INDICATION THAT THE COMMENTS HAVE BEEN COMPLIED WITH.
12. A PARTIAL LIST OF SHOP DRAWINGS INCLUDES:
- 1. PANELBOARDS
 - 2. FIRE ALARM SYSTEM
 - 3. LUMINAIRES
 - 4. EMERGENCY BATTERY UNITS AND FIXTURES
 - 5. STARTERS, CONTACTORS, AND CONTROL DEVICES
 - 6. FIRESTOPPING MATERIALS
 - 7. WIRING DEVICES
 - 8. OCCUPANCY SENSORS

FIRESTOPPING

- .1 FIRESTOPPING MATERIAL AND INSTALLATION WITHIN ANNULAR SPACE BETWEEN CONDUITS, DUCTS, AND ADJACENT FIRE SEPARATION.
 - .2 PROVIDE MATERIALS AND SYSTEMS CAPABLE OF MAINTAINING EFFECTIVE BARRIER AGAINST FLAME, SMOKE, AND GASES.
 - .3 COMPLY WITH THE REQUIREMENTS OF CAN4-S115-M35, AND DO NOT EXCEED OPENING SIZE FOR WHICH THEY HAVE BEEN TESTED.
 - .4 SYSTEMS TO HAVE AN F OR FT RATING (AS APPLICABLE) NOT LESS THAN THE FIRE PROTECTION RATING REQUIRED FOR CLOSURES IN A FIRE SEPARATION. PROVIDE "FIREWRAP" BLANKET AROUND SERVICES PENETRATING FIREWALLS.
 - .5 EXTENT OF BLANKET MUST CORRESPOND TO ULC RECOMMENDATIONS. IN GENERAL WRAP INDIVIDUAL CONDUITS WITH APPROVED FIREWRAP MATERIALS ON EACH SIDE OF FIREWALL. REFER TO ARCHITECTURAL DRAWINGS FOR FT RATINGS. PROVIDE 1 AND/OR 2 LAYERS OF FIREWRAP WITH TRANSVERSE AND LONGITUDINAL SEAMS OVERLAPPED AND/OR BUTTED (SECOND LAYER OFFSET FROM FIRST LAYER). CUT EDGES ARE TO BE SEALED WITH ALUMINUM FOIL TAPE. PROVIDE 50 MM STAINLESS STEEL BANDING AT 200 MM INTERVALS. INSTALL FIREWRAP TO MANUFACTURERS' RECOMMENDATIONS FOR PROPER FT RATING. ACCEPTABLE MANUFACTURERS ARE 3M FIREMASTER DUCTWRAP OR APPROVED EQUAL.
 - .6 THE FIRESTOPPING MATERIALS ARE NOT TO SHRINK, SLUMP OR SAG AND BE FREE OF ASBESTOS, HALOGENS AND VOLATILE SOLVENTS.
 - .7 FIRESTOPPING MATERIALS ARE TO CONSIST OF A COMPONENT SEALANT APPLIED WITH A CONVENTIONAL CAULKING GUN AND TROWEL.
 - .8 FIRESTOP MATERIALS ARE TO BE CAPABLE OF RECEIVING FINISH MATERIALS IN THOSE AREAS, WHICH ARE EXPOSED AND SCHEDULED TO RECEIVE FINISHES.
 - .9 FIRESTOPPING SHALL BE INSPECTED AND APPROVED BY LOCAL AUTHORITY PRIOR TO CONCEALMENT OR ENCLOSURE.
 - .10 INSTALL MATERIAL AND COMPONENTS IN ACCORDANCE WITH ULC CERTIFICATION, MANUFACTURERS INSTRUCTIONS AND LOCAL AUTHORITY.
 - .11 SUBMIT PRODUCT LITERATURE AND INSTALLATION MATERIAL ON FIRESTOPPING IN SHOP DRAWING AND PRODUCT DATA MANUAL.
 - .12 ACCEPTABLE MANUFACTURERS:
 - FIRESEAL INDUSTRIES INC.
 - GENERAL ELECTRIC PENSI FIRESTOP SYSTEMS
 - INTERNATIONAL PROTECTIVE COATINGS CORP.
 - RECTORSSEAL CORPORATION (METACAULK)
 - PROSET SYSTEMS
 - 3M
 - AD SYSTEMS
 - HILTI
 - ROYAL
- NOTE: FIRE STOP MATERIAL MUST CONFORM TO REQUIREMENTS OF LOCAL AUTHORITIES HAVING JURISDICTION. CONTRACTOR TO CONFIRM PRIOR TO APPLICATION AND ENSURE MATERIAL USED IS COMPATIBLE WITH THAT USED BY OTHER TRADES ON SITE.
- .13 ENSURE FIRESTOP MANUFACTURER REPRESENTATIVE PERFORMS ON SITE INSPECTIONS AND CERTIFIES INSTALLATION. SUBMIT INSPECTION REPORTS/CERTIFICATION AT TIME OF SUBSTANTIAL COMPLETION.

- .1 GENERAL PURPOSE AC SWITCHES MUST CONFORM TO CSA C22.2 NO. 111 (LATEST EDITION).
- .2 INSTALL SINGLE THROW SWITCHES WITH HANDLE IN "UP" POSITION WHEN SWITCH IS CLOSED.
- .3 INSTALL SWITCHES IN GANG TYPE OUTLET BOX WHEN MORE THAN ONE SWITCH IS REQUIRED IN ONE LOCATION.
- .4 RECEPTACLES, PLUGS, AND OTHER SIMILAR WIRING DEVICES MUST CONFORM TO CSA C22.2 NO. 42 (LATEST EDITION).
- .5 INSTALL DEVICES IN GANG TYPE OUTLET BOX WHEN MORE THAN ONE DEVICE IS REQUIRED IN ONE LOCATION.
- .6 SHEET STEEL UTILITY BOX COVER FOR WIRING DEVICES INSTALLED IN SURFACE MOUNTED UTILITY BOXES.
- .7 STAINLESS STEEL, VERTICALLY BRUSHED, 1mm THICK OR THERMOPLASTIC CONSTRUCTION, COLOUR TO MATCH WIRING DEVICES, THICKNESS 2.5mm, COVER PLATES FOR WIRING DEVICES MOUNTED IN FLUSH-MOUNTED OUTLET BOXES.
- .8 SHEET METAL COVER PLATES FOR WIRING DEVICES MOUNTED IN SURFACE-MOUNTED FS OR FD TYPE CONDUIT BOXES.
- .9 WEATHERPROOF "HEAVY DUTY IN USE" COVER PLATES, COMPLETE WITH GASKETS FOR DUPLEX RECEPTACLES AS INDICATED.
- .10 PROTECT STAINLESS STEEL COVER PLATE FINISH WITH PAPER OR PLASTIC FILM UNTIL PAINTING AND OTHER WORK IS FINISHED.
- .11 INSTALL SUITABLE COMMON COVER PLATES WHERE WIRING DEVICES ARE GROUPED.

FIRE ALARM SYSTEMS

1. INSTALLATION OF FIRE ALARM DEVICES MUST CONFORM TO ULC-S524 (LATEST EDITION). (CHUBB EDWARDS FIRESHIELD PLUS WITHIN EAST CORRIDOR)
2. ALL WIRING MUST BE COLOUR CODED, SIZED ACCORDING TO MANUFACTURER'S RECOMMENDATIONS AND CONFORM TO THE LATEST EDITION OF THE ELECTRICAL SAFETY CODE.
3. ALL NEW FIRE ALARM DETECTION AND SIGNALING DEVICES ADDED DUE TO RENOVATIONS AND ADDITIONS SHALL BE CONNECTED TO EXISTING LOCAL ZONE OR NEW ZONE AS INDICATED.
4. ONCE INSTALLATION IS COMPLETE THE MANUFACTURER'S REPRESENTATIVE MUST MAKE AN INSPECTION OF THE DEVICES INSTALLED.
5. THIS TEST MUST CONFORM TO THE ONTARIO BUILDING CODE AND THE LATEST EDITION OF ULC CAN4-S537.
6. ALL COSTS ASSOCIATED WITH THIS INSPECTION BY THE CONTRACTOR AND MANUFACTURER MUST BE CARRIED IN THE TENDER PRICE.
7. UPON SUCCESSFUL COMPLETION OF TESTING THE MANUFACTURER MUST SUBMIT TO THE CONTRACTOR AND CONSULTANT:
 - CERTIFICATE OF VERIFICATION
 - FIELD TECHNICIAN VERIFICATION SHEETS FOR EACH DEVICE VERIFIED (INCLUDE COPIES OF SAME IN MAINTENANCE MANUALS)

REVISIONS

[illegible]

The contractor shall verify all dimensions and report all errors and discrepancies to the Consultant before commencement of the work.

The drawings show general arrangement of services. Following the construction work, the Consultant will permit. Obtain approval for relocation of service from Consultant before commencement of the work.

The drawings do not indicate all offsets fitting and accessories which may be required. Provide the same to meet the need of the project.

Drawings and specifications, etc., prepared and issued by the consultant are the property of the consultant and must be returned at the completion of the project. These documents are not to be duplicated or copied without the consent of the Consultant.

© 2021 DEJ & Associates Inc.

CLIENT:

WATERLOO REGION

DISTRICT SCHOOL BOARD

Tender No. 7188-KP-21

PROJECT:

22061

A/C UPGRADES AND WINDOW REPLACEMENTS

ST. JACOBS PUBLIC SCHOOL

72 QUEENSWAY DR.

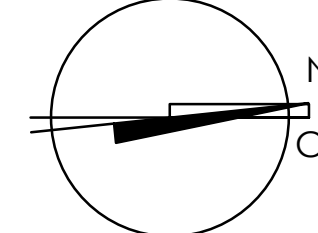
ST. JACOBS, ON

NOB 2140

ORIGINAL PAGE SIZE ARCH D - 24" x 36"

KEY TO DETAIL LOCATION
 (A) A - DETAIL NO.

(B) B - DETAIL NO. ORIGIN



E3.2

DRAWN BY

CHECKED BY

ELECTRICAL SPECIFICATIONS