

ASSEMBLIES SCHEDULE						
F - FLOOR ASSEMBLIES						
TYPE	DIAGRAM	DESCRIPTION	ASSEMBLY-SPECIFIC NOTES	PERFORMANCE		
F1		EXISTING CAST-IN-PLACE CONCRETE SLAB VAR FLOOR FINISH AND UNDERLAY REFER TO FINISH PLANS & SCHEDULE EXISTING FLOOR SLAB		CATEGORY	REQUIRED	PROVIDED
				FRR	-	-
				STC RATING	-	-

P - INTERIOR PARTITION AND FURRING ASSEMBLIES

NOTE: ALL PARTITIONS TO GO TO U/S OF EXISTING STRUCTURE U.N.O.

NOTE: FOR ALL ASSEMBLIES IN THE CONTRACT DOCUMENTS WITH A DESIGNATED LISTING FROM A TESTING AUTHORITY (E.G. ULC) IT IS THE FULL RESPONSIBILITY OF THE TRADE CONTRACTOR AND/OR CONSTRUCTION MANAGER TO INDEPENDENTLY RESEARCH, PROVIDE, AND CONSTRUCT THE COMPLETE PUBLISHED ASSEMBLY AS DESCRIBED BY THE ASSOCIATED TESTING AUTHORITIES. THE DESCRIPTION OF THE ASSEMBLIES IN THE CONTRACT DOCUMENTS ARE NOTED "AS BASIS OF DESIGN" AND MAY NOT REPRESENT THE FULL CRITERIA AS DEFINED BY THE TESTING AUTHORITY.

TYPE	DIAGRAM	DESCRIPTION	ASSEMBLY-SPECIFIC NOTES	PERFORMANCE		
P1		140mm NON-LOADBEARING CMU VAR FINISH, REFER TO FINISH PLANS 140mm INTERIOR LOADBEARING CMU HOLLOW BLOCK, NORMAL WEIGHT TYPE "N" REFER TO STRUCTURAL VAR FINISH, REFER TO FINISH PLANS	<ul style="list-style-type: none"> REFER TO STRUCTURAL DRAWINGS FOR LATERAL SUPPORT CONNECTIONS AND DETAILS AND LINTEL SUPPORT DETAILS TYPICAL HORIZONTAL AND VERTICAL MORTAR JOINT SPACING TO BE 10mm UNLESS NOTED OTHERWISE PROVIDE BULLNOSE BLOCK AT ALL EXPOSED CORNER, JAMB, AND HEAD CONDITIONS 	CATEGORY	REQUIRED	PROVIDED
				FRR	-	-
				STC RATING	-	-
P2		92mm FIRE RATED NON-LOADBEARING STEEL STUDS WITH 16mm GB (BOTH SIDES) VAR FINISH, REFER TO FINISH PLANS 16mm GB-2 GYPSUM BOARD 92mm NON-LOADBEARING STEEL STUD FRAMING @ 406mm O.C. 32mm TWO LAYERS GB-2 GYPSUM BOARD VAR FINISH, REFER TO FINISH PLANS	<ul style="list-style-type: none"> DESIGN BASED ON OBC SB-3 WALL TYPE "S2" 	CATEGORY	REQUIRED	PROVIDED
				FRR	1HR	1HR PER OBC SB-3
				STC	-	-
P3		92mm NON-LOADBEARING STEEL STUD ON EXISTING MASONRY WALL WITH 16mm GB (ONE SIDE) TL PORCELAIN TILE 16mm TB-1 TILE BACKER BOARD 92mm NON-LOADBEARING STEEL STUD FRAMING @ 406mm O.C. - EXISTING MASONRY WALL PT PAINT FINISH	<ul style="list-style-type: none"> CONTRACTOR TO VERIFY CONDITIONS OF EXISTING WALL WALL ASSEMBLY TO EXTEND FROM FLOOR SLAB TO UNDERSIDE OF DECK ABOVE. ENTIRE WALL PERIMETER TO BE CAULKED WITH ACOUSTIC SILICON SEALANT PATCH AND REPAIR ANY DAMAGE TO EXISTING FIRE PROOFING 	CATEGORY	REQUIRED	PROVIDED
				FRR	-	-
				STC	-	-
P4		92mm NON-LOADBEARING STEEL STUD WITH 16mm GB (ONE SIDE), PLUS TWO LAYERS 16mm GB (ONE SIDE) ON 140mm NON-LOADBEARING CMU TL PORCELAIN TILE 16mm TB-1 TILE BACKER BOARD 92mm NON-LOADBEARING STEEL STUD FRAMING @ 406mm O.C. 32mm TWO LAYERS GB-2 GYPSUM BOARD 140mm INTERIOR LOADBEARING CMU HOLLOW BLOCK, NORMAL WEIGHT TYPE "N" REFER TO STRUCTURAL PT PAINT FINISH	<ul style="list-style-type: none"> REFER TO STRUCTURAL DRAWINGS FOR LATERAL SUPPORT CONNECTIONS AND DETAILS AND LINTEL SUPPORT DETAILS TYPICAL HORIZONTAL AND VERTICAL MORTAR JOINT SPACING TO BE 10mm UNLESS NOTED OTHERWISE PROVIDE BULLNOSE BLOCK AT ALL EXPOSED CORNER, JAMB, AND HEAD CONDITIONS CONTRACTOR TO VERIFY CONDITIONS OF EXISTING WALL PATCH AND REPAIR ANY DAMAGE TO EXISTING FIRE PROOFING 	CATEGORY	REQUIRED	PROVIDED
				FRR	1HR	1HR PER OBC SB-3
				STC	-	-
P5		92mm NON-LOADBEARING STEEL STUD WITH 16mm GB (ONE SIDE), PLUS TWO LAYERS 16mm GB (ONE SIDE) ON EXISTING MASONRY WALL VAR FINISH, REFER TO FINISH PLANS 16mm TB-1 TILE BACKER BOARD 92mm NON-LOADBEARING STEEL STUD FRAMING @ 406mm O.C. 32mm TWO LAYERS GB-2 GYPSUM BOARD EXISTING MASONRY WALL (1HR FRR) PT PAINT FINISH	<ul style="list-style-type: none"> CONTRACTOR TO VERIFY CONDITIONS OF EXISTING WALL WALL ASSEMBLY TO EXTEND FROM FLOOR SLAB TO UNDERSIDE OF DECK ABOVE. ENTIRE WALL PERIMETER TO BE CAULKED WITH ACOUSTIC SILICON SEALANT PATCH AND REPAIR ANY DAMAGE TO EXISTING FIRE PROOFING 	CATEGORY	REQUIRED	PROVIDED
				FRR	1HR	1HR**
				STC	-	-
				**EXISTING UNIT MASONRY WALL HAS A FRR OF 1 HR AS PER OBC SB-2 TABLE 2.1.1.		
P6		152mm NON-LOADBEARING STEEL STUDS WITH 16mm GB (BOTH SIDES) PT PAINT FINISH 16mm GB-1 GYPSUM BOARD 152mm NON-LOADBEARING STEEL STUD FRAMING @ 406mm O.C. 16mm GB-1 GYPSUM BOARD PT PAINT FINISH		CATEGORY	REQUIRED	PROVIDED
				FRR	-	-
				STC RATING	-	-

R - ROOF ASSEMBLIES						
TYPE	DIAGRAM	DESCRIPTION	ASSEMBLY-SPECIFIC NOTES	PERFORMANCE		
R1		FIRE-RATED ROOF ASSEMBLY - EXISTING ROOF ASSEMBLY AND STRUCTURE CONTINUOUS SPRAY-APPLIED FIRE-PROOFING APPLIED TO U/S OF EXISTING ROOF AND STRUCTURE TO ACHIEVE 1HR FIRE RATING		CATEGORY	REQUIRED	PROVIDED
				FRR	1HR	1HR
				STC RATING	-	-

ASSEMBLIES SCHEDULE (CONTINUED)						
C - SUSPENDED CEILING ASSEMBLIES						
TYPE	DIAGRAM	DESCRIPTION	ASSEMBLY-SPECIFIC NOTES	PERFORMANCE		
C1		SUSPENDED LAY-IN ACOUSTICAL TILE CEILING WITH SUPPORT GRID SYSTEM (DRY AREAS) VAR MAIN BEAM AND CROSS TEE ACOUSTICAL TILE GRID SYSTEM SUPPORT FRAMING AS REQUIRED C/W WIRE TIE SUPPORTS 19mm AT-1 LAY-IN ACOUSTICAL TILE (610 x 1220mm)	NOTE: ALL ACOUSTICAL TILE GRID SYSTEM SUPPORT FRAMING AND WIRE TIE HANGERS TO BE HOT-DIPPED GALVANIZED. NOTE: WIRE TIE HANGERS ARE NOT TO BE FASTENED BACK TO METAL ROOF DECKING. CONTRACTOR TO PROVIDE ADDITIONAL FRAMING AS REQUIRED TO SUPPORT CEILING ASSEMBLY AND ASSOCIATED FIXTURES.	CATEGORY	REQUIRED	PROVIDED
				FRR	-	-
				STC RATING	-	-
C2		SUSPENDED LAY-IN ACOUSTICAL TILE CEILING WITH SUPPORT GRID SYSTEM (WET AREAS) VAR MAIN BEAM AND CROSS TEE ACOUSTICAL TILE GRID SYSTEM SUPPORT FRAMING AS REQUIRED C/W WIRE TIE SUPPORTS 19mm AT-2 LAY-IN ACOUSTICAL TILE (610 x 1220mm)	NOTE: ALL ACOUSTICAL TILE GRID SYSTEM SUPPORT FRAMING AND WIRE TIE HANGERS TO BE HOT-DIPPED GALVANIZED. NOTE: WIRE TIE HANGERS ARE NOT TO BE FASTENED BACK TO METAL ROOF DECKING. CONTRACTOR TO PROVIDE ADDITIONAL FRAMING AS REQUIRED TO SUPPORT CEILING ASSEMBLY AND ASSOCIATED FIXTURES.	CATEGORY	REQUIRED	PROVIDED
				FRR	-	-
				STC RATING	-	-
C3		SUSPENDED TEGULAR ACOUSTICAL TILE CEILING WITH SUPPORT GRID SYSTEM VAR MAIN BEAM AND CROSS TEE ACOUSTICAL TILE GRID SYSTEM SUPPORT FRAMING AS REQUIRED C/W WIRE TIE SUPPORTS 19mm AT-3 ACOUSTICAL TILE C/W BEVELED TEGULAR EDGES (610 x 610mm)	NOTE: ALL ACOUSTICAL TILE GRID SYSTEM SUPPORT FRAMING AND WIRE TIE HANGERS TO BE HOT-DIPPED GALVANIZED. NOTE: WIRE TIE HANGERS ARE NOT TO BE FASTENED BACK TO METAL ROOF DECKING. CONTRACTOR TO PROVIDE ADDITIONAL FRAMING AS REQUIRED TO SUPPORT CEILING ASSEMBLY AND ASSOCIATED FIXTURES.	CATEGORY	REQUIRED	PROVIDED
				FRR	-	-
				STC RATING	-	-

ASSEMBLY GENERAL NOTES

- REFER TO FIRE SEPARATION DRAWINGS FOR REQUIRED FIRE SEPARATION RATINGS. THE CONTRACTOR IS TO ENSURE THE CONTINUITY OF ALL FIRE SEPARATIONS AS REQUIRED.
- THE CONTRACTOR IS TO PROVIDE ULC-LISTED FIRESTOP SYSTEMS AS REQUIRED FOR ALL BUILDING SERVICE PENETRATIONS THROUGH RATED ASSEMBLIES. REFER TO MECHANICAL AND ELECTRICAL DRAWINGS.
- THE CONTRACTOR IS TO PROVIDE ULC-LISTED FIRESTOP SYSTEMS AS REQUIRED FOR ALL RATED PARTITION ASSEMBLY CONDITIONS.
- ALL WALLS WITHOUT A WALL TAG ARE TO BE CONSTRUCTED AS PARTITION TYPE P1, UNLESS NOTED OTHERWISE.
- UNLESS NOTED OTHERWISE, ALL PARTITION AND FURRING ASSEMBLIES ARE TO EXTEND FROM STRUCTURAL DECKSLAB TO U/S OF STRUCTURAL DECKSLAB ABOVE.
- HEIGHT LIMITS FOR NON-LOADBEARING INTERIOR AND EXTERIOR CONCRETEBLOCK MASONRY IS TO CONFORM TO OBC S.30.1.1. REFER TO STRUCTURAL DRAWINGS FOR REINFORCING, LINTELS, AND LATERAL SUPPORT.
- HEIGHT LIMITS OF INTERIOR AND FURRING PARTITION STEEL STUD FRAMING IS TO CONFORM TO OBC S.24.2.1, OR STEEL STUD SUPPLIER HEIGHT TABLES.
- THE CONTRACTOR IS TO PROVIDE ENGINEERED SHOP DRAWINGS, SIGNED AND SEALED BY A P.E. LICENSED WITHIN THE PROVINCE OF ONTARIO FOR ALL STEEL STUD FRAMING DENOTED AS "WIND-BEARING" OR "STRUCTURAL".
- THE CONTRACTOR IS TO PROVIDE ENGINEERED SHOP DRAWINGS, SIGNED AND SEALED BY A STRUCTURAL P.E. LICENSED WITHIN THE PROVINCE OF ONTARIO FOR ALL EXTERIOR CLADDING PANEL SYSTEMS, INCLUDING ALL ASSOCIATED SUPPORT FRAMING AND CONNECTIONS.
- THE CONTRACTOR IS TO PROVIDE STRUCTURAL STUD FRAMING AS REQUIRED TO SUPPORT ALL EXTERIOR CURTAINWALL, STOREFRONT GLAZING AND PUNCH WINDOW SYSTEMS. IN ADDITION TO ALL INTERIOR SCREENS, IT IS THE RESPONSIBILITY OF THE CONTRACTOR TO COORDINATE STUD SPACING AND CONFIGURATION AS REQUIRED TO MEET CURTAINWALL, STOREFRONT, PUNCH WINDOW, AND INTERIOR SCREEN SUPPLIER REQUIREMENTS.
- PROVIDE CEMENT BOARD IN LIEU OF GYPSUM BOARD AT ALL ASSEMBLIES TO RECEIVE TILE FINISHES. REFER TO FINISH PLANS.
- IN AREAS WITH HIGH VAPOUR CONTENT (IE. JANITOR ROOMS AND WASHROOMS) PROVIDE MOULD-RESISTANT GYPSUM BOARD IN LIEU OF REGULAR GYPSUM BOARD WHERE PAINT FINISHES ARE INDICATED. REFER TO FINISH PLANS.
- PROVIDE FLEXIBLE BONDED WATERPROOFING AND VAPOUR RETARDER MEMBRANE AT ALL SHOWER AREAS RECEIVING TILE (FLOORS AND WALLS).
- PROVIDE CONT. ACOUSTICAL SEALANT (BOTH SIDES) AT TOP AND BOTTOM OF ALL INTERIOR STUD AND GYPSUM BOARD PARTITIONS. PROVIDE ULC-LISTED SEALANT AT ALL RATED PARTITIONS AS REQUIRED. REFER TO FIRE SEPARATION DRAWINGS.
- ACCESS PANELS LOCATED WITHIN SUSPENDED GYPSUM BOARD CEILING ASSEMBLIES ARE TO BE PAINTED OUT TO MATCH THE SURROUNDING CEILING FINISH. PROVIDE ULC-LISTED ACCESS PANEL WHERE PANEL IS LOCATED IN A RATED CEILING. REFER TO FIRE SEPARATION DRAWINGS.
- ACCESS PANELS LOCATED WITHIN EXTERIOR SOFFITS ARE TO BE PAINTED OUT TO MATCH THE SURROUNDING SOFFIT FINISH.
- UNLESS NOTED OTHERWISE, ASSEMBLIES ABOVE DOORS, WINDOWS, EXTERIOR OPENINGS AND INTERIOR SCREENS IS TO BE THE SAME AS THE TYPE DENOTED ON EITHER SIDE.
- PROVIDE 19mm PLYWOOD BLOCKING AS REQUIRED FOR ALL GRAB-BARS AND WALL MOUNTED ACCESSORIES. REFER TO FINISH PLANS AND INTERIOR ELEVATIONS.
- ALL R AND SSI VALUES SHOWN ARE NOMINAL. REFER TO PROJECT MANUAL FOR FULL LISTING OF INSULATION TYPES AND WEATHER BARRIER TYPES.

WEATHER BARRIER AND FLASHING LEGEND

AWP-1	AIR AND WATER BARRIER, VAPOUR PERMEABLE
AWV-1	AIR, WATER, AND VAPOUR BARRIER
MBR-1	MODIFIED BUILT-UP ROOFING MEMBRANE
FDP-1	FOUNDATION DAMPPROOFING MEMBRANE
MTF-4	METAL FLASHING (# DENOTES TYPE)
STS-1	SILICONE TRANSITION SYSTEM
TRM-1	TRANSITION MEMBRANE
TWF-1	THRU-WALL FLEXIBLE FLASHING MEMBRANE
VCB-1	VAPOUR CONTROL BARRIER, SLABS (15 MIL)
VCB-2	VAPOUR CONTROL BARRIER, WALLS (6 MIL)
VCB-3	VAPOUR CONTROL AND AIR BARRIER, ROOF DECKS (SELF-ADHERED)

GYPSUM BOARD AND SHEATHING LEGEND

GB-1	16mm GYPSUM BOARD
GB-2	16mm TYPE "X" GYPSUM BOARD
GB-3	16mm TYPE "X" GYPSUM BOARD, ABUSE RESISTANT
GB-4	16mm TYPE "X" GYPSUM BOARD, MOULD RESISTANT
GB-5	16mm TYPE "X" GYPSUM BOARD, ABUSE AND MOULD RESISTANT
GB-6	16mm TYPE "X" GYPSUM BOARD, HIGH-IMPACT AND MOULD RESISTANT
GB-7	25mm SHAFTWALL LINER PANEL
CB-1	16mm CEMENT BOARD
TB-1	16mm TILE BACKER BOARD
EG-1	EXTERIOR GRADE GYPSUM SHEATHING
EP-1	EXTERIOR GRADE PLYWOOD SHEATHING

INSULATION LEGEND

INS-1	MINERAL FIBRE BOARD INSULATION
INS-2	MINERAL FIBRE BATT INSULATION
INS-3	MINERAL FIBRE ACOUSTICAL BATT INSULATION
INS-4	EXTRUDED POLYSTYRENE BOARD INSULATION
INS-5	EXTRUDED POLYSTYRENE BOARD INSULATION (HIGH-DENSITY)
INS-6	EXTRUDED POLYSTYRENE BOARD INSULATION (CONCRETE-FACED)
INS-7	POLYISOCYANURATE ROOFING INSULATION
INS-8	POLYISOCYANURATE ROOFING INSULATION, TAPERED (2% SLOPE)
INS-9	ROOFING INSULATION COVERBOARD

ISSUE DATE:

NO.	DATE	DESCRIPTION
4	17-03-21	TENDER
3	28-02-2021	90% CONSTRUCTION DOCUMENTS
2	16-02-2021	80% CONSTRUCTION DOCUMENTS
1	05-02-2021	50% CONSTRUCTION DOCUMENTS

PROJECT:
Queen Elizabeth Public School - Office Renovation

DRAWING TITLE:
ASSEMBLIES, TYPICAL PARTITION DETAILS, AND ASSEMBLY NOTES

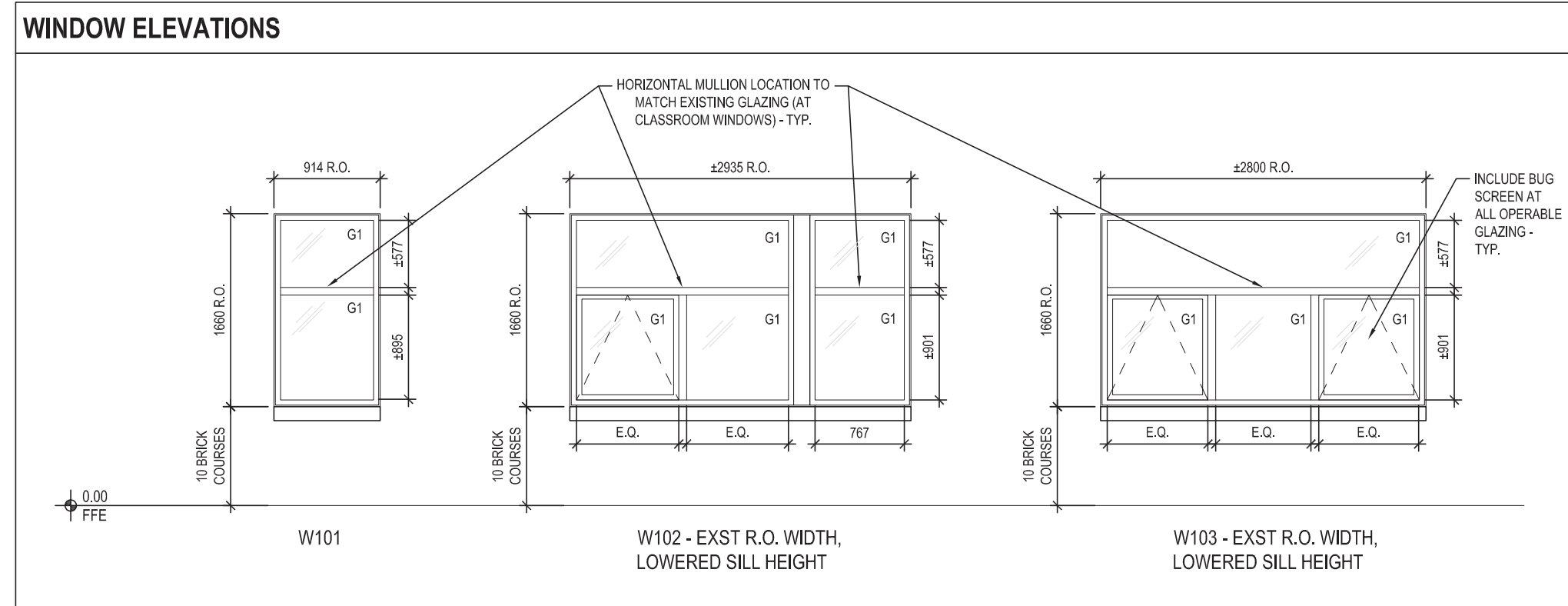
PROJECT NO: 20927
SCALE: 1:10
DRAWN BY: MY
REVIEWED BY: DS

DRAWING NO:
A003

GLAZING SCHEDULE				
ABBREVIATION	DESCRIPTION	MANUFACTURER	PRODUCT	NOTES
G1	EXTERIOR, DOUBLE GLAZED, TG, LOW-E, TINTED GLASS	GUARDIAN GLASS	SN 54	OUTSIDE: TEMPERED GLASS WITH LOW-E COATING (U 0.29; SHGC 0.38) AIR SPACE: ARGON GAS, WARM EDGE SPACER WITH PORT AT TOP OF UNIT INSIDE: TEMPERED GLASS
G2	EXTERIOR, DOUBLE GLAZED, TG	GUARDIAN GLASS	SN 54	OUTSIDE: TEMPERED AND LAMINATED GLASS AIR SPACE: ARGON GAS, WARM EDGE SPACER WITH PORT AT TOP OF UNIT INSIDE: TEMPERED GLASS
G3	INTERIOR, LG, FIRE RATED	KERALITE	-	MIN. 8mm TOTAL THICKNESS; CERAMIC GLASS; LAMINATED 45 MIN FIRE RATED GLASS USED IN RATED DOORS AND SCREENS INCLUDE FOR CERAMIC FRIT VISION STRIPS (50mm THICK AT 1500mm AFF)
G4	INTERIOR, TLG, NON RATED	-	-	MIN. 10mm TOTAL THICKNESS; TEMPERED AND LAMINATED VISION GLASS USED FOR INTERIOR SCREENS AND DOORS INCLUDE FOR CERAMIC FRIT VISION STRIPS (50mm THICK AT 1500mm AFF)

WINDOW SCHEDULE											
WINDOW NO.	LOCATION		WINDOW SIZE			FRAME CONSTRUCTION		GLAZING TYPE	NOTES		
	ROOM NAME	ROOM #	R.O. WIDTH	R.O. HEIGHT	THICKNESS	MATERIAL	FINISH				
W101	ADMIN OFFICE	102	914	1660	100	AL	AN	G1	SINGLE FIXED, ROLLER SHADE		
W102	ADMIN OFFICE	102	2935	1660	100	AL	AN	G1	SINGLE AWNING, DOUBLE FIXED, ROLLER SHADE		
W103	ADMIN OFFICE	102	2800	1660	100	AL	AN	G1	SINGLE FIXED, DOUBLE AWNING, ROLLER SHADE		

NOTE: CONTRACTOR RESPONSIBLE FOR VERIFYING ALL DIMENSIONS PRIOR TO FABRICATION.

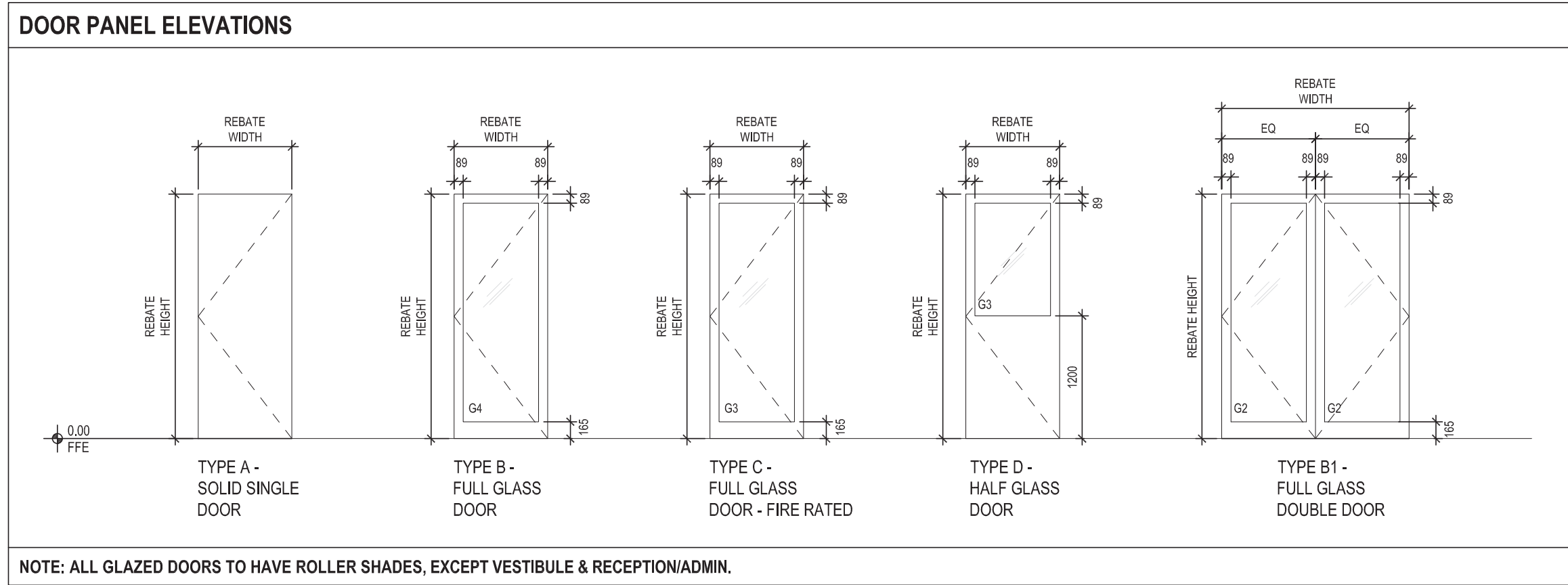


- ### DOOR & FRAME NOTES
- CONTRACTOR TO CONFIRM ALL FINISHES, LOCATIONS, AND QUANTITIES AND NOTIFY CONSULTANT OF ANY DISCREPANCIES.
 - ALL DOORS IN FIRE SEPARATIONS TO BE EQUIPPED WITH SELF-CLOSING DEVICE AND SELF LATCHING HARDWARE.
 - FOR DOOR SWINGS REFER TO PLAN.
 - FOR PAINT COLOURS REFER TO FINISH SCHEDULE AND INTERIOR ELEVATIONS.
 - PROVIDE ACOUSTIC SEALANT AND FILL FRAME AT ALL DOORS IN ACOUSTICALLY RATED WALL ASSEMBLIES AND ALL DOORS AT OFFICES.
 - COORDINATE THROAT SIZE TO WALL SCHEDULE AND MANUFACTURERS TOLERANCES. FOR DOORS TO BE INSTALLED IN EXISTING WALLS, VERIFY EXISTING WALL THICKNESS ON SITE. COORDINATE SIZE OF FRAME TO ACCOMMODATE EXISTING WALL THICKNESS.
 - CONTRACTOR TO COORDINATE JAMB WIDTHS AND DETAILS WITH ON-SITE CONDITIONS. CONTRACTOR TO PRODUCE SHOP-DRAWINGS OF JAMB DETAILS FOR ARCHITECTS REVIEW AND APPROVAL.
 - PROVIDE MANUFACTURERS FLOOR ANCHOR STRAPS FOR ALL HOLLOW METAL JAMB FRAMES AND MULLION FLOOR ANCHORS FOR HOLLOW METAL MULLIONS. ANCHORS TO BE FIRE RATED TYPE.
 - IN FRAME DETAILS GRAPHIC OF WALL ASSEMBLIES ARE GENERIC ONLY-CONTRACTOR MUST REFERENCE ASSEMBLY TYPES FOR EXACT WIDTH & COMPOSITION OF WALLS.
 - ALL SCREEN FRAMES ARE TO BE PAINTED HOLLOW METAL, UNLESS OTHERWISE NOTED. REFER TO INTERIOR ELEVATIONS, DOOR & FINISH SCHEDULES FOR PAINT COLOURS.
 - GLASS IN 45 MIN FIRE RATED DOORS TO BE RATED 45 MIN.
 - GLASS OR TRANSPARENT DOOR SHALL CONFORM TO Q.B.C., DIV.B.3.3.1.1.8. TRANSPARENT PANELS USED IN ACCESS TO EXITS THAT CAN BE MISTAKEN FOR EGRESS DOORS SHALL BE MADE INACCESSIBLE BY BARRIERS OR RAILINGS.
 - WHERE A VISION PANEL IS PROVIDED IN A DOOR IN A BARRIER-FREE PATH OF TRAVEL, SUCH PANEL SHALL BE AT LEAST 75mm IN WIDTH AND BE LOCATED SO THAT THE BOTTOM OF THE PANEL IS NOT MORE THAN 900mm ABOVE THE FINISHED FLOOR, AND THE EDGE OF THE PANEL CLOSEST TO THE LATCH IS NOT MORE THAN 250mm FROM THE LATCH SIDE OF THE DOOR.

- ### WINDOW NOTES
- CONTRACTOR TO CONFIRM ALL FINISHES, LOCATIONS, AND NUMBERS AND NOTIFY CONSULTANT OF ANY DISCREPANCIES.
 - ALL EXTERIOR WINDOWS ARE TO BE INSULATED & HAVE THERMALLY BROKEN FRAMES. FILL FRAMES AND SPACE BETWEEN FRAMES AND ADJACENT MATERIALS WITH SPRAY FOAM INSULATION.
 - CONTRACTOR TO COORDINATE WINDOW WIDTHS AND DETAILS WITH ON-SITE CONDITIONS. CONTRACTOR TO PRODUCE SHOP DRAWINGS OF WINDOW ASSEMBLIES FOR ARCHITECTS REVIEW.
 - THE OPERABLE OPENING TO BE LIMITED TO 185MM. ENSURE THAT OPERABLE FRAME DOES NOT EXTEND PAST THE SURFACE OF THE WALL.
 - ALL GLAZING TO BE TEMPERED UNLESS OTHERWISE SPECIFIED.

DOOR NO.	FROM ROOM:		TO ROOM:		DOOR SIZE			PANEL CONSTRUCTION			FRAME CONSTRUCTION			GLAZING TYPE	FIRE RATING	HARDWARE
	ROOM NAME	ROOM #	ROOM NAME	ROOM #	REBATE WIDTH	REBATE HEIGHT	THICKNESS	TYPE	MATERIAL	FINISH	TYPE	MATERIAL	FINISH			
D100	CORRIDOR	-	VESTIBULE	100	965	2200	52	B1	AL	AN	B	AL	AN	G2	-	CLOSER, PDO, PANIC HARDWARE
D101A	CORRIDOR	-	RECEPTION & WAITING	101	965	2200	45	C	HM	PT	A	HM	PT	G3	45 MINS	CLOSER, PDO
D101B	CORRIDOR	-	RECEPTION & WAITING	101	965	2200	45	C	HM	PT	A	HM	PT	G3	45 MINS	CLOSER
D103A	CORRIDOR	-	HEALTH ROOM	103	965	2200	45	A	HM	PT	A	HM	PT	-	45 MINS	ROLLER, ROLLER SHADE
D103B	ADMIN OFFICE	102	HEALTH ROOM	103	965	2200	45	D	SCW	PT	A	HM	PT	G4	-	ROLLER SHADE
D104	ADMIN OFFICE	102	STAFF WIC	104	965	2200	45	A	SCW	PT	A	HM	PT	-	-	-
D105	ADMIN OFFICE	102	PRINCIPAL	105	965	2200	45	B	SCW	PT	A	HM	PT	G4	-	ROLLER SHADE
D106	ADMIN OFFICE	102	VICE PRINCIPAL	106	965	2200	45	B	SCW	PT	A	HM	PT	G4	-	ROLLER SHADE
D107	CORRIDOR	-	CUSTODIAL	107	965	2200	45	D	HM	PT	A	HM	PT	G3	45 MINS	CLOSER, ROLLER SHADE
D108A	CORRIDOR	-	STAFF WORK ROOM	108	965	2200	45	D	HM	PT	A	HM	PT	G3	45 MINS	CLOSER, ROLLER SHADE
D108B	ADMIN OFFICE	102	STAFF WORK ROOM	108	965	2200	45	B	SCW	PT	A	HM	PT	G4	-	ROLLER SHADE
D109	STAFF WORK ROOM	108	B-F WIC	109	965	2200	45	A	SCW	PT	A	HM	PT	-	-	PDO
D110	CORRIDOR	-	STAFF LOUNGE	110	965	2200	45	D	HM	PT	A	HM	PT	G3	45 MINS	CLOSER, ROLLER SHADE
D111A	CORRIDOR	-	MEETING ROOM	111	965	2200	45	D	HM	PT	A	HM	PT	G3	45 MINS	CLOSER, ROLLER SHADE
D111B	STAFF LOUNGE	110	MEETING ROOM	111	965	2200	45	B	SCW	PT	A	HM	PT	G4	-	ROLLER SHADE

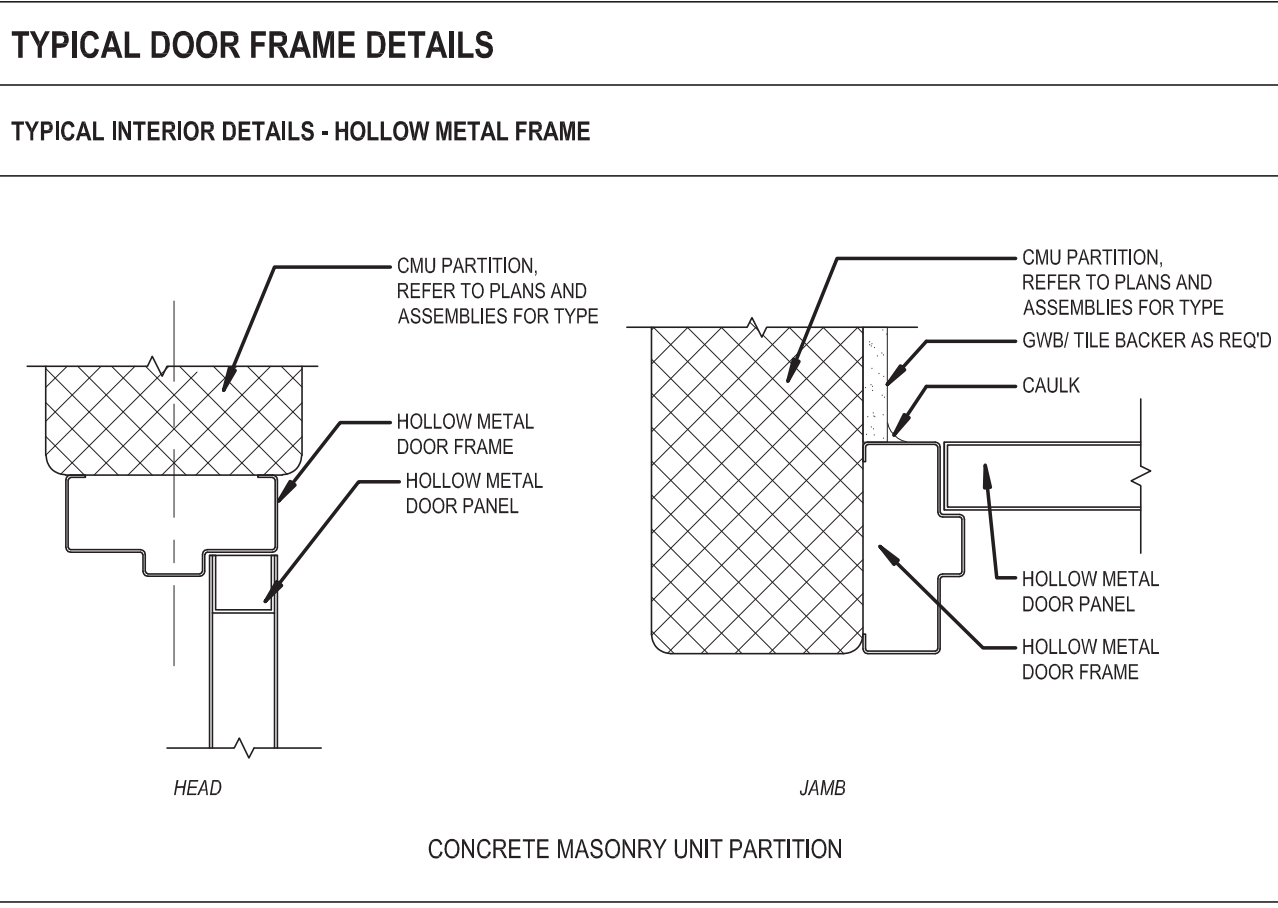
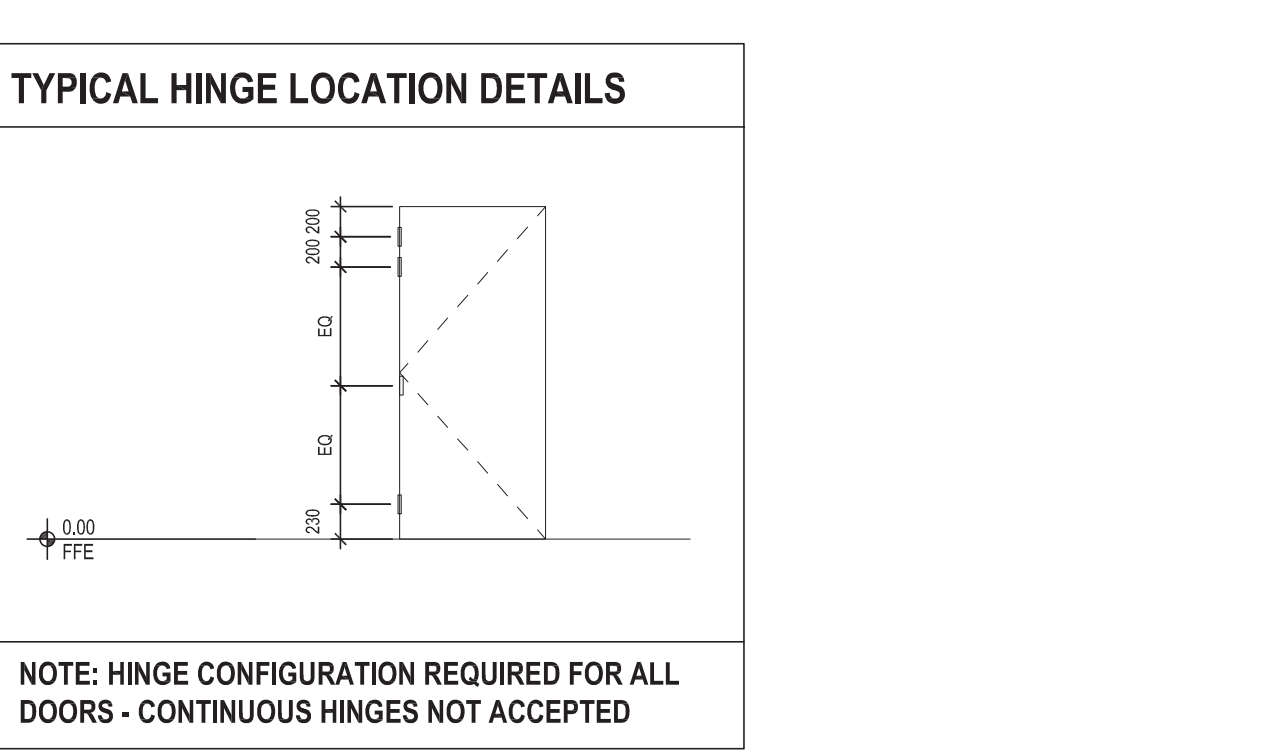
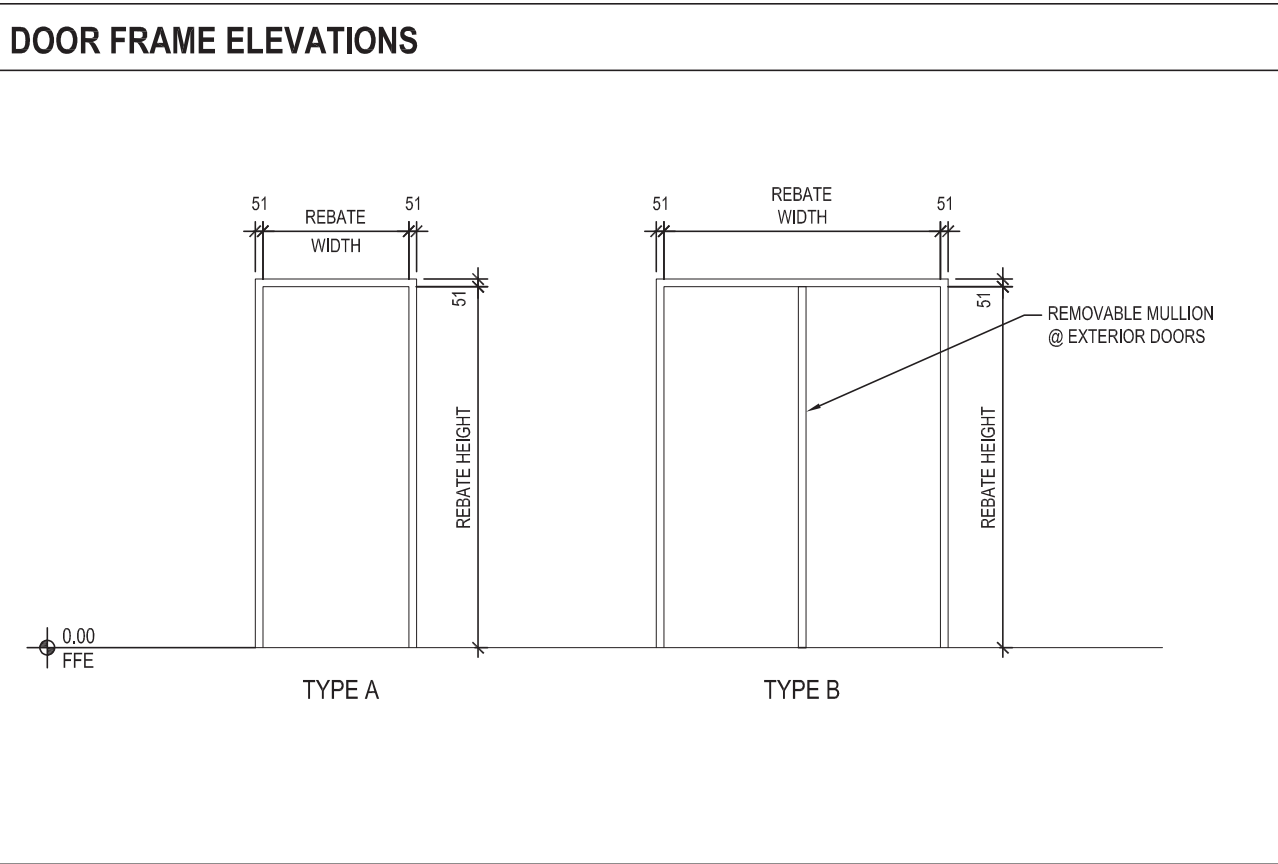
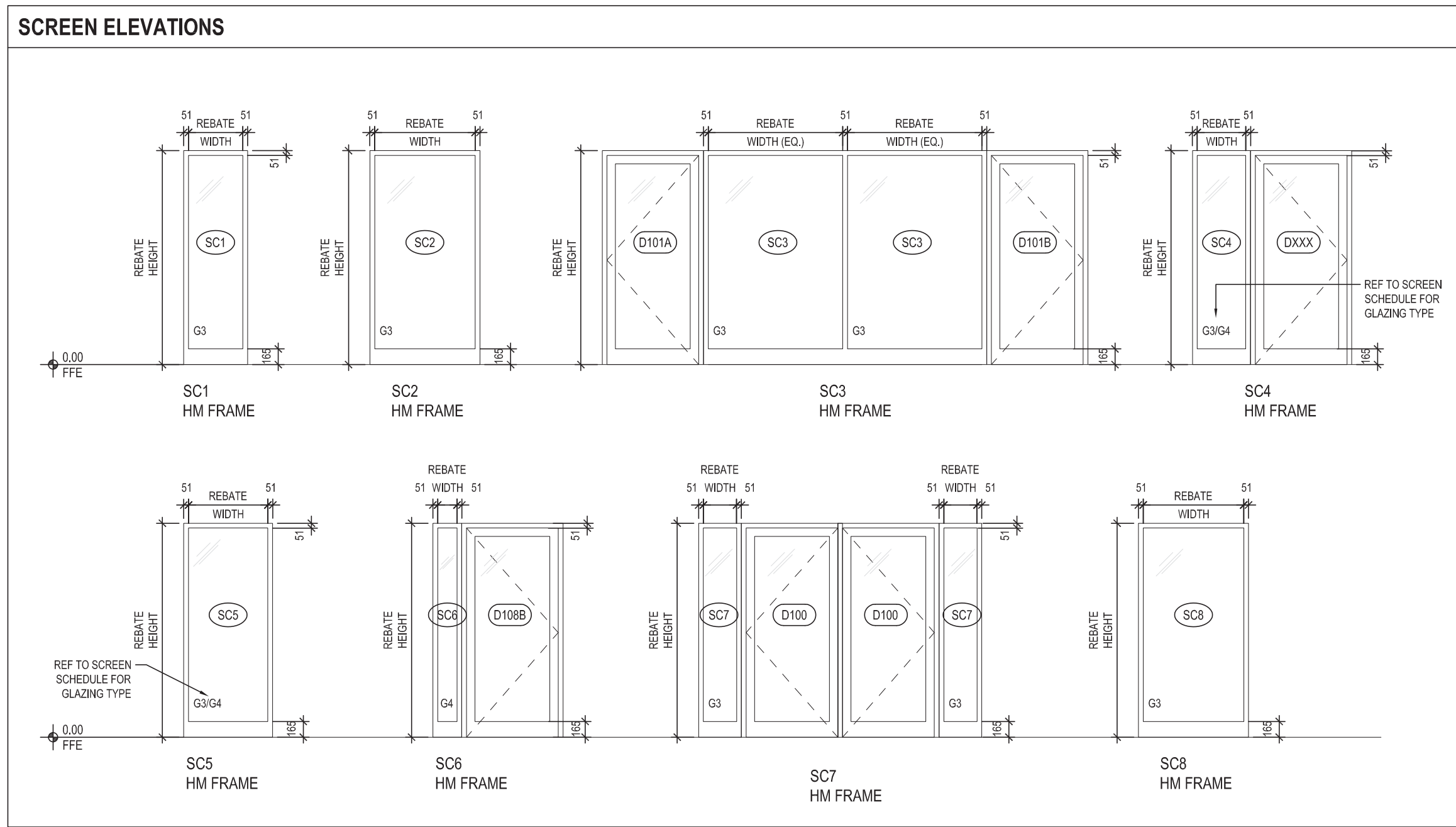
NOTE: CONTRACTOR RESPONSIBLE FOR VERIFYING ALL DIMENSIONS PRIOR TO FABRICATION.
NOTE: ADD PDO TO EXISTING ENTRY DOORS - REFER TO PLAN AND ELECTRICAL.



SCREEN SCHEDULE

SCREEN NO.	LOCATION		SCREEN SIZE			FRAME CONSTRUCTION		GLAZING TYPE	FIRE RATING	NOTES
	ROOM NAME	ROOM #	REBATE WIDTH	REBATE HEIGHT	THICKNESS	MATERIAL	FINISH			
SC1	RECEPTION & WAITING	101	570	2251	127	HM	PT	G3	45 MINS	-
SC2	RECEPTION & WAITING	101	1158	2251	127	HM	PT	G3	45 MINS	-
SC3	RECEPTION & WAITING	101	1364	2251	127	HM	PT	G3	45 MINS	-
SC4	HEALTH ROOM	103	510	2251	127	HM	PT	G4	-	ROLLER SHADE
	PRINCIPAL	105	510	2251	127	HM	PT	G4	-	ROLLER SHADE
	VICE PRINCIPAL	106	510	2251	127	HM	PT	G4	-	ROLLER SHADE
	CUSTODIAL	107	510	2251	127	HM	PT	G3	45 MINS	ROLLER SHADE
SC5	MEETING ROOM	111	510	2251	127	HM	PT	G4	-	ROLLER SHADE
	PRINCIPAL	105	835	2251	127	HM	PT	G4	-	ROLLER SHADE
SC6	STAFF WORK ROOM	108	803	2251	127	HM	PT	G4	-	ROLLER SHADE
SC7	VESTIBULE	100	393	2251	114	AL	AN	G3	-	-
SC8	RECEPTION & WAITING	101	1158	2251	127	HM	PT	G3	45 MINS	-

NOTE: CONTRACTOR RESPONSIBLE FOR VERIFYING ALL DIMENSIONS PRIOR TO FABRICATION.
NOTE: ALL SCREENS TO HAVE ROLLER SHADES, EXCEPT VESTIBULE & RECEPTION/ADMIN.



310 Spadina Ave, Suite 100B
Toronto, Ontario, Canada M5T 2E8
T: 416 203 7600 F: 416 203 3342
lga-ap.com

NOTE: This drawing is the property of the architect and may not be reproduced or used without the expressed consent of the architect. The contractor shall be responsible for checking and verifying all levels and dimensions and shall report all discrepancies to the architect and obtain clarification prior to commencing work. Not for construction unless stamped by the architect and issued for such purpose.
DO NOT SCALE DRAWINGS

ISSUE DATE:

NO.	DATE	DESCRIPTION
4	17-03-21	TENDER
3	28-02-2021	90% CONSTRUCTION DOCUMENTS
2	16-02-2021	80% CONSTRUCTION DOCUMENTS
1	05-02-2021	50% CONTRACT DOCUMENTS

PROJECT:
Queen Elizabeth Public School - Office Renovation

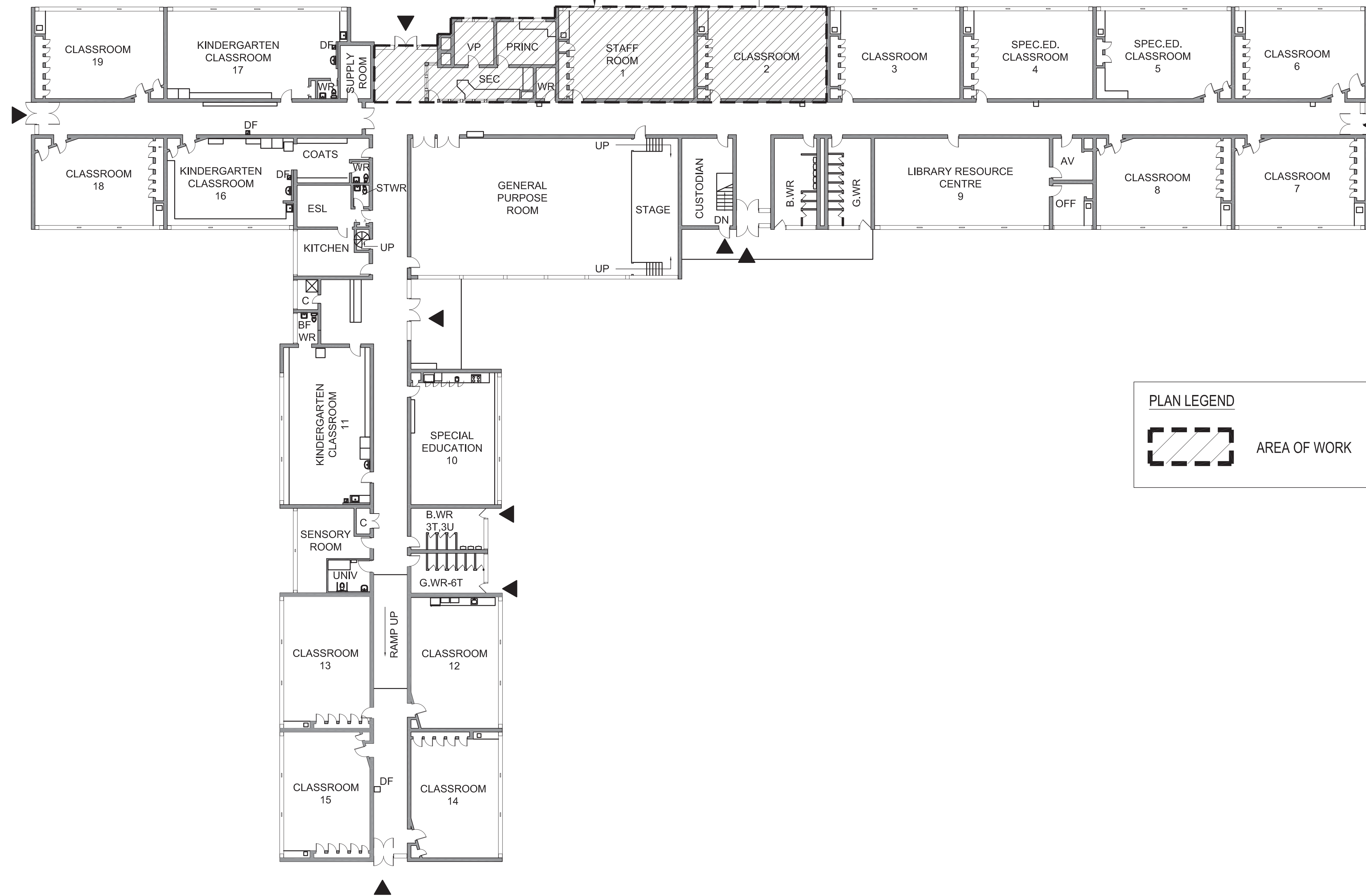
DRAWING TITLE:
DOOR, WINDOW, SCREEN, AND GLAZING SCHEDULES AND TYPICAL DOOR DETAILS

PROJECT NO: 20927
SCALE: NTS
DRAWN BY: MY
REVIEWED BY: DS

DRAWING NO:
A004

AREA OF WORK: CONNECTIONS INTO AND OUT OF THIS AREA FOR SERVICES REQUIRED SHOULD BE CONSIDERED PART OF THIS CONTRACT

1 A022 1 A101



PLAN LEGEND

 AREA OF WORK

ISSUE DATE:

NO.	DATE	DESCRIPTION
5	17-03-21	TENDER
4	26-02-2021	80% CONSTRUCTION DOCUMENTS
3	16-02-2021	80% CONSTRUCTION DOCUMENTS
2	06-02-2021	50% CONTRACT DOCUMENTS
1	01-02-2021	100% DESIGN DEVELOPMENT

PROJECT:

Queen Elizabeth Public School - Office Renovation

DRAWING TITLE:

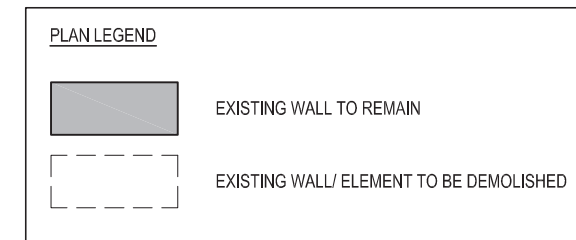
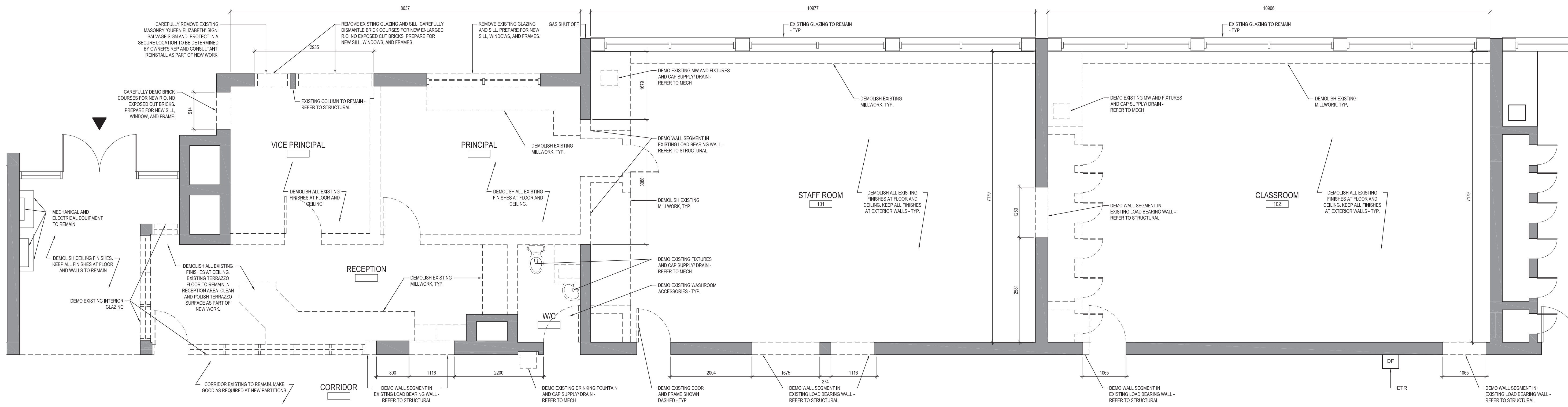
GROUND FLOOR PLAN - AREA OF WORK

PROJECT NO: 20927
 SCALE: 1:200
 DRAWN BY: MY
 REVIEWED BY: DS

PROJECT NORTH:


DRAWING NO:

A021



NOTES ON DESIGNATED SUBSTANCES:

- PRIOR TO COMMENCING WORK, READ '2016 ASBESTOS AUDIT UPDATE - QUEEN ELIZABETH PUBLIC SCHOOL' PREPARED BY LITE CONSULTANTS INC. (DATE: MARCH 28, 2016)
- ANY REQUIRED ABATEMENT IS THE RESPONSIBILITY OF THE CONTRACTOR.
- IN NO WAY SHOULD THE CONTRACTOR ASSUME IT OTHERWISE TO BE 100% FREE OF DESIGNATED SUBSTANCES AND AS SUCH THE CONTRACTOR SHOULD TAKE EVERY PRECAUTION WHEN WORKING IN THE BUILDING.
- IF THE CONTRACTOR ENCOUNTERS TOXIC OR HAZARDOUS SUBSTANCES, OR HAS REASONABLE GROUNDS TO BELIEVE THAT TOXIC OR HAZARDOUS SUBSTANCES ARE PRESENT, THE CONTRACTOR SHALL TAKE ALL REASONABLE STEPS, INCLUDING STOPPING THE WORK, TO ENSURE THAT NO PERSON'S EXPOSURE TO ANY TOXIC OR HAZARDOUS SUBSTANCES EXCEEDS ANY APPLICABLE TIME WEIGHTED LEVELS PRESCRIBED BY APPLICABLE LEGISLATION AT THE PLACE OF THE WORK AND IMMEDIATELY REPORT THE CIRCUMSTANCES TO THE OWNER IN WRITING.

GENERAL DEMOLITION NOTES:

- CONTRACTOR TO REVIEW AND FOLLOW "H.A.S.P." (HEALTH AND SAFETY PROCEDURES) AS DICTATED IN THE SPECIFICATION BEFORE BEGINNING ANY WORK.
- INFORMATION SHOWN ON THE DEMOLITION DRAWINGS IS BASED ON INFORMATION AVAILABLE FROM EXISTING BUILDING DRAWINGS AND A LIMITED VISUAL INSPECTION.
- CONTRACTOR TO CHECK ALL DRAWINGS AGAINST ACTUAL CONDITIONS ON SITE AND REPORT ANY DISCREPANCIES TO THE ARCHITECT PRIOR TO PROCEEDING WITH THE WORK.
- ALL DIMENSIONS ARE TO BE DETERMINED USING THE PROPOSED CONTRACT DOCUMENTS. NO DIMENSIONS ARE TO BE INFERRED FROM THE DEMOLITION DRAWINGS.
- QUEEN ELIZABETH PS WILL REMAIN OPERATIONAL THROUGH THE DURATION OF CONSTRUCTION. CONTRACTOR IS REQUIRED TO FULLY PROTECT OCCUPANTS FROM DUST & DEBRIS. KEEP NOISE TO ACCEPTABLE LIMITS. AND PROVIDE PROTECTION FROM WEATHER INCLUDING COOL AND PRECIPITATION. PROTECTION MEASURES WILL BE THE FULL RESPONSIBILITY OF THE CONTRACTOR. THE CONTRACTOR IS RESPONSIBLE TO KEEP ALL PUBLIC ACCESSIBLE SPACES CLEAN AND FREE OF DEBRIS. THE CONTRACTOR IS TO WALK THE PERIMETER OF THE SITE EACH MORNING UPON ARRIVAL AND AT THE END OF DAY TO INSPECT CONDITIONS. THE CONTRACTOR IS RESPONSIBLE TO ENSURE THAT EMERGENCY EXITS AND EGRESS FROM OCCUPIED STUDENT SPACES REMAIN UNOBSTRUCTED AND MEET BUILDING CODE. IF IN DOUBT DISCUSS WITH THE CONSULTANTS. IF EMERGENCY EXITING CANNOT BE MAINTAINED TO CODE, THE CONTRACTOR WILL BE REQUIRED TO REVIEW THE SITUATION WITH AUTHORITIES AND PROVIDE ANY ADDITIONAL REQUIREMENT AUTHORITIES OR THE SCHOOL BOARD RECOMMEND, INCLUDING A FIRE WATCH.
- CONTRACTOR TO MAKE GOOD ALL WALLS, CEILINGS AND FLOORING TO REMAIN THAT ARE AFFECTED BY DEMOLITION WHERE EXISTING SURFACES ARE DISTURBED. MAKE GOOD EXISTING SURFACE OR ENTIRE PLANE OF SURFACE BACK TO NEAREST CORNER OR CHANGE IN MATERIAL.
- CONTRACTOR TO SUPPLY AND INSTALL ALL NECESSARY HOARDING TARPS, ETC TO PROTECT WORK AND MAINTAIN A DUST FREE ENVIRONMENT IN SURROUNDING AREAS.
- CONTRACTOR TO MAKE GOOD ALL JUNCTIONS BETWEEN EXISTING STRUCTURES IDENTIFIED TO BE REMOVED AND EXISTING STRUCTURES IDENTIFIED TO REMAIN.
- REMOVE & DISPOSE OF ALL EXISTING CEILING FINISHES AND SUPPORT SYSTEMS AS NOTED. FOR CLARITY OF DRAWINGS CEILING IS NOT DASHED IN DEMOLITION DRAWINGS, HOWEVER THEY MUST BE REMOVED AS NOTED HERE.
- REMOVE & DISPOSE OF ALL ABANDONED SERVICES - FIXTURES, EQUIPMENT, CONDUITS, PIPE, WIRING, ETC. (INTERIOR AND EXTERIOR).
- REMOVE & DISPOSE OF ALL EXISTING MILLWORK, FURNITURE, LOOSE MISCELLANEOUS ARTICLES AND EQUIPMENT UNLESS OTHERWISE NOTED.
- REMOVE & DISPOSE ALL EXISTING SIGNAGE UNLESS OTHERWISE NOTED.
- DEMOLISH ALL EXISTING ELEMENTS SHOWN HERE AS WELL AS ANY EXISTING ELEMENT WHERE DEMOLITION OF THE ELEMENT IS REQUIRED TO ACCOMMODATE THE WORK.
- REMOVE ALL MECHANICAL SYSTEMS, FIXTURES, EQUIPMENT, PIPING, CONDUIT, DUCTWORK, ETC., UNLESS NOTED IN AREA OF WORK.
- THIS IS NOT AN EXHAUSTIVE LIST. TO BE READ WITH ALL DRAWINGS AND SPECIFICATIONS (INCLUDING BUT NOT LIMITED TO DEMOLITION DRAWINGS AND SPEC SECTIONS).
- REFER TO SPECIFICATIONS FOR ADDITIONAL REQUIREMENTS.
- REMOVE EXISTING DOORS, GRILLES, INCLUDING ALL FRAMING AS NOTED ON DEMO PLANS. ALL EXISTING LOCKS MUST BE RETURNED TO THE OWNER.
- REMOVE EXISTING INTERIOR PARTITIONS AND GLAZING INCLUDING ASSOCIATED FRAMING AS NOTED ON DEMO PLANS. PARTITIONS SHALL BE REMOVED FULL HEIGHT TO STRUCTURE ABOVE.
- REMOVE STRAINER OF ALL ABANDONED FLOOR DRAINS WHERE ABANDONED FLOOR DRAIN IS LOCATED IN EXPOSED CONCRETE FLOOR. PATCH TO MATCH ADJACENT FLOOR FINISH. SEE ALSO MECHANICAL.
- REMOVE ALL EXISTING PLUMBING FIXTURES INCLUDING ALL ASSOCIATED PLUMBING. SEE ALSO MECHANICAL.
- REMOVE GLAZING AND ASSOCIATED SUBSTRATES WHERE INDICATED. COORDINATE EXTENT OF REMOVAL REQUIRED TO INSTALL NEW WINDOWS. MAKE GOOD ALL DAMAGES TO EXISTING MASONRY WALLS AND SILLS AS A RESULT OF REMOVAL.

ISSUE DATE:

NO.	DATE	DESCRIPTION
5	17-03-21	TENDER
4	26-02-2021	80% CONSTRUCTION DOCUMENTS
3	19-02-2021	80% CONSTRUCTION DOCUMENTS
2	09-02-2021	50% CONTRACT DOCUMENTS
1	01-02-2021	100% DESIGN DEVELOPMENT

PROJECT:

Queen Elizabeth Public School - Office Renovation

DRAWING TITLE:

PARTIAL GROUND FLOOR PLAN - DEMOLITION

PROJECT NO: 20927
 SCALE: 1:50
 DRAWN BY: MY
 REVIEWED BY: DS

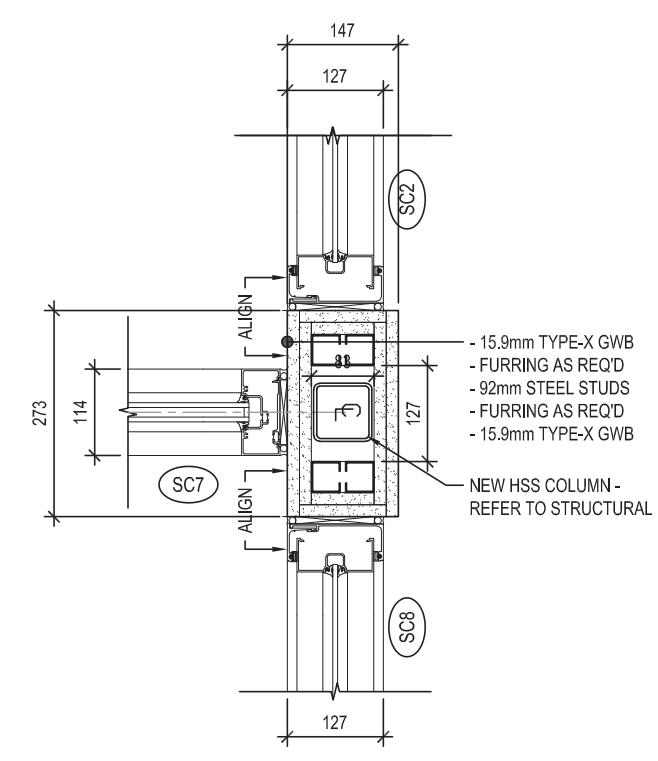


DRAWING NO:

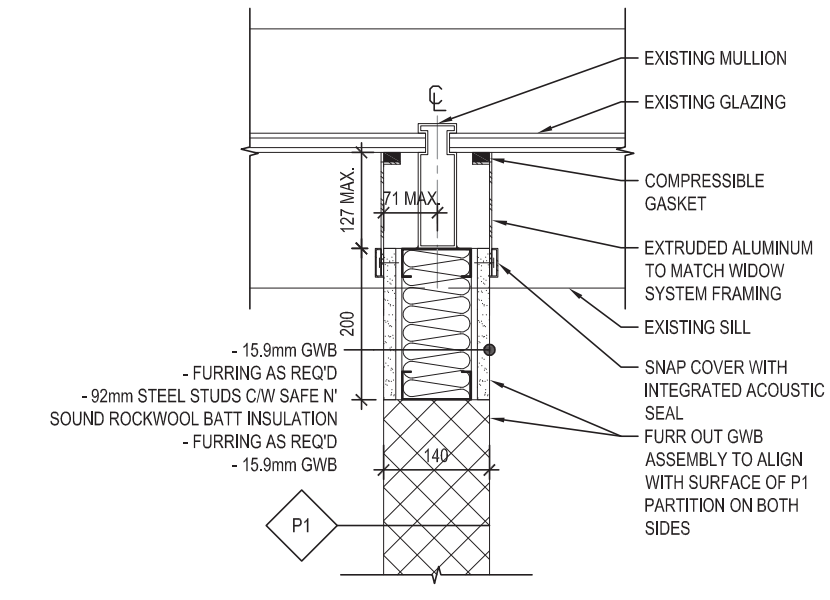
A022

NOTE: This drawing is the property of the architect and may not be reproduced or used without the expressed consent of the architect. The contractor shall be responsible for checking and verifying all levels and dimensions and shall report all discrepancies to the architect and obtain clarification prior to commencing work. Not for construction unless stamped by the architect and issued for such purpose.

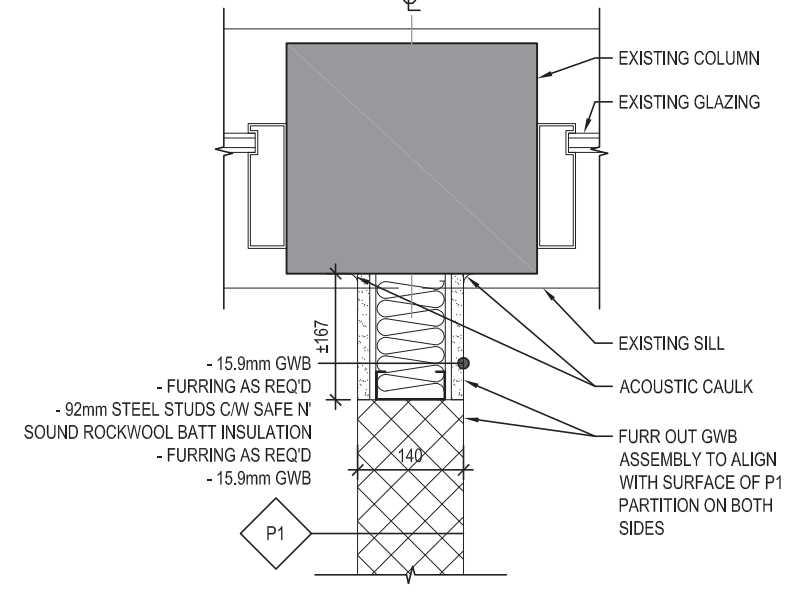
DO NOT SCALE DRAWINGS



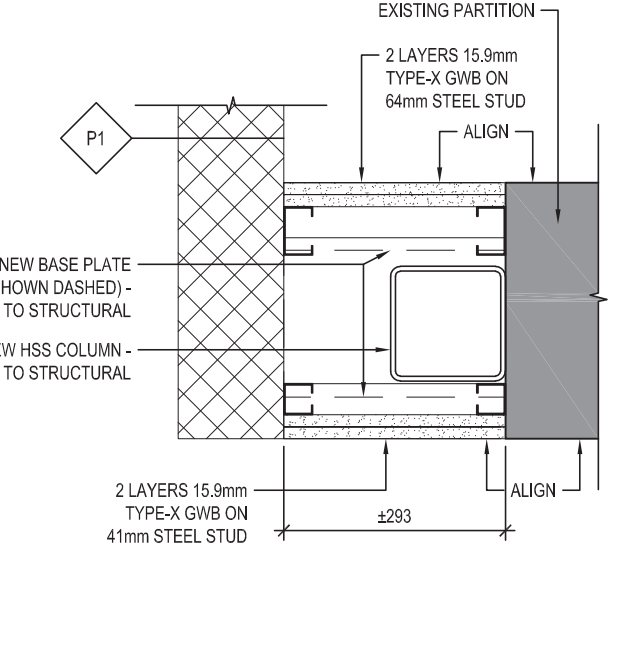
2 PLAN DETAIL - INTERIOR SCREEN - VESTIBULE/RECEPTION AREA
 1:10



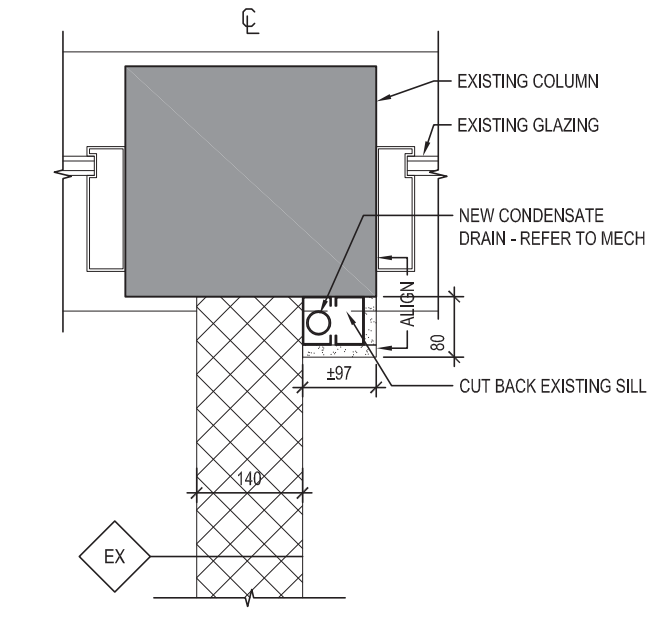
3 PLAN DETAIL - BLOCK WALL AT EXISTING WINDOW
 1:10



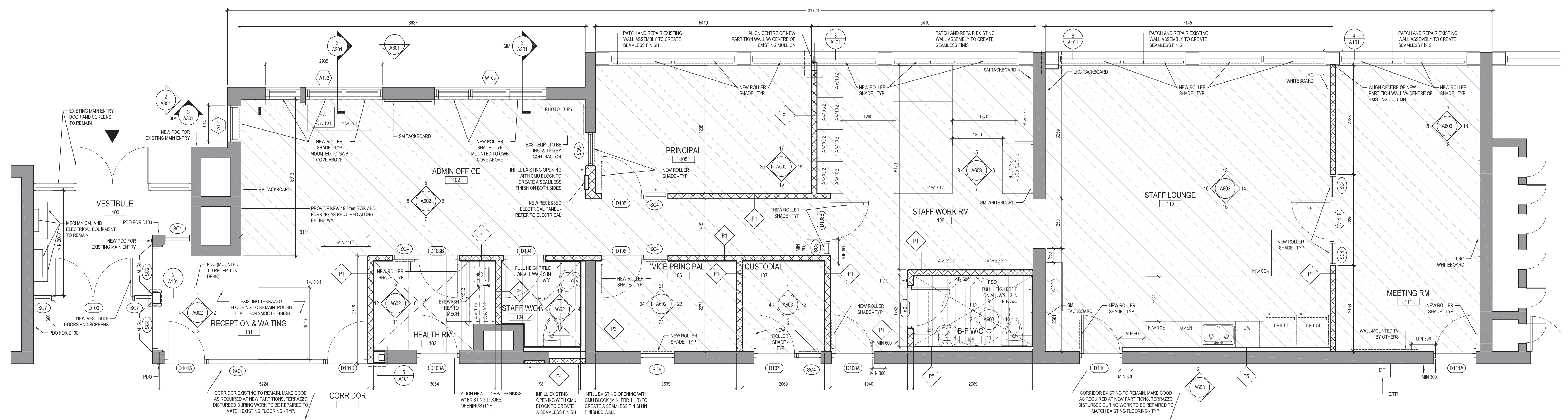
4 PLAN DETAIL - BLOCK WALL AT EXISTING COLUMN
 1:10



5 PLAN DETAIL - FIRE-PROOFING AT NEW STRUCTURAL COLUMN
 1:10



6 PLAN DETAIL - FIRE-PROOFING AT MECHANICAL CHASE
 1:10



1 PARTIAL GROUND FLOOR PLAN - PROPOSED
 1:50

PLAN LEGEND

- EXISTING WALL TO REMAIN
- PROPOSED WALL (STUD)
- PROPOSED WALL (CMU)

FLOOR FINISHES LEGEND

- PORCELAIN TILE (PT)
- RESILIENT SHEET FLOORING
- EXISTING TERRAZZO FLOOR TO REMAIN

ISSUE DATE:

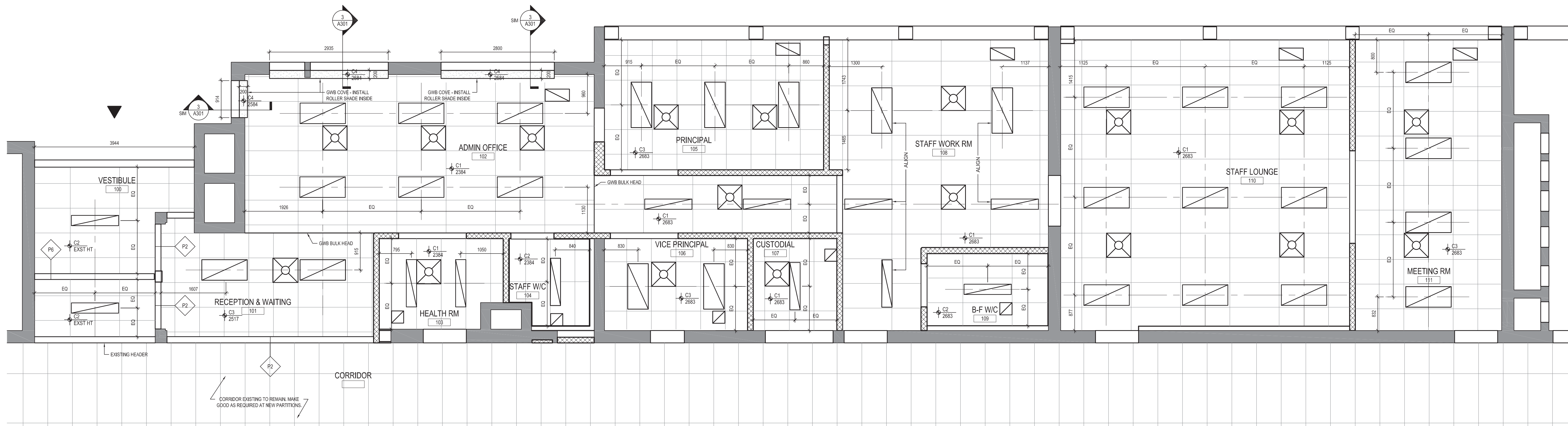
NO.	DATE	DESCRIPTION
5	17-03-2021	TENDER
4	26-02-2021	90% CONSTRUCTION DOCUMENTS
3	16-02-2021	80% CONSTRUCTION DOCUMENTS
2	05-02-2021	50% CONTRACT DOCUMENTS
1	01-02-2021	100% DESIGN DEVELOPMENT

PROJECT:
 Queen Elizabeth Public School - Office Renovation

DRAWING TITLE:
 PARTIAL GROUND FLOOR PLAN - PROPOSED

PROJECT NO: 20927
SCALE: AS NOTED
DRAWN BY: MY
REVIEWED BY: DS

DRAWING NO:
A101



CEILING FINISHES LEGEND

	2x4 SUSPENDED ACOUSTIC CEILING TILE (LX-IN ACT) (C1)
	MOISTURE-RESISTANT 2x4 SUSPENDED ACOUSTIC CEILING TILE (LX-IN ACT) (C2)
	2x2 SUSPENDED ACOUSTIC CEILING TILE (REGULAR ACT) (C3)
	GWB COVE (C3)

RCP LEGEND

	CEILING SUPPLY AIR DIFFUSER (REFER TO MECHANICAL)
	CEILING EXHAUST / RETURN GRILLE (REFER TO MECHANICAL)
	CEILING EXHAUST / RETURN GRILLE (REFER TO MECHANICAL)
	RECESSED LINEAR LUMINAIRE (REFER TO ELECTRICAL)
	RECESSED LINEAR LUMINAIRE (REFER TO ELECTRICAL)

- RCP NOTES:**
1. ARCHITECTURAL RCP IS INTENDED TO ILLUSTRATE LIGHTING LOCATIONS AND CEILING HEIGHT (TO BE VERIFIED IN FIELD) FINISHES. REFER TO ELECTRICAL FOR SPECIFICATIONS, TO CONFIRM QUANTITIES AND OTHER RELATED ITEMS.
 2. REFER TO MECHANICAL / ELECTRICAL FOR RELATED ITEMS INCLUDING BUT NOT LIMITED TO TRANSFER DUCTS, SPECIFICATIONS AND CONTROLS.
 3. WHERE POSSIBLE, ALIGN ITEMS IN CEILING, DOWN AND COORDINATE W/ CONSULTANTS ON SITE PRIOR TO COMMENCING WORK.
 4. ALL DIMENSIONS SHOWN ARE +/- CONTRACTOR TO VERIFY ALL DIMENSIONS ON SITE AND SHALL REPORT ANY DISCREPANCIES TO ARCHITECT.
 5. DRAWINGS ARE NOT TO BE SCALED FOR CONSTRUCTION PURPOSES.
 6. CONTRACTOR TO VERIFY AND MAINTAIN ALL EXISTING FIRE SEPARATIONS. ALL NEW ASSOCIATED ITEMS TO BE RATED AS REQ'D

ISSUE DATE:

NO.	DATE	DESCRIPTION
4	17-03-21	TENDER
3	26-02-2021	90% CONSTRUCTION DOCUMENTS
2	16-02-2021	80% CONTRACT DOCUMENTS
1	01-02-2021	100% DESIGN DEVELOPMENT

PROJECT:

Queen Elizabeth Public School - Office Renovation

DRAWING TITLE:

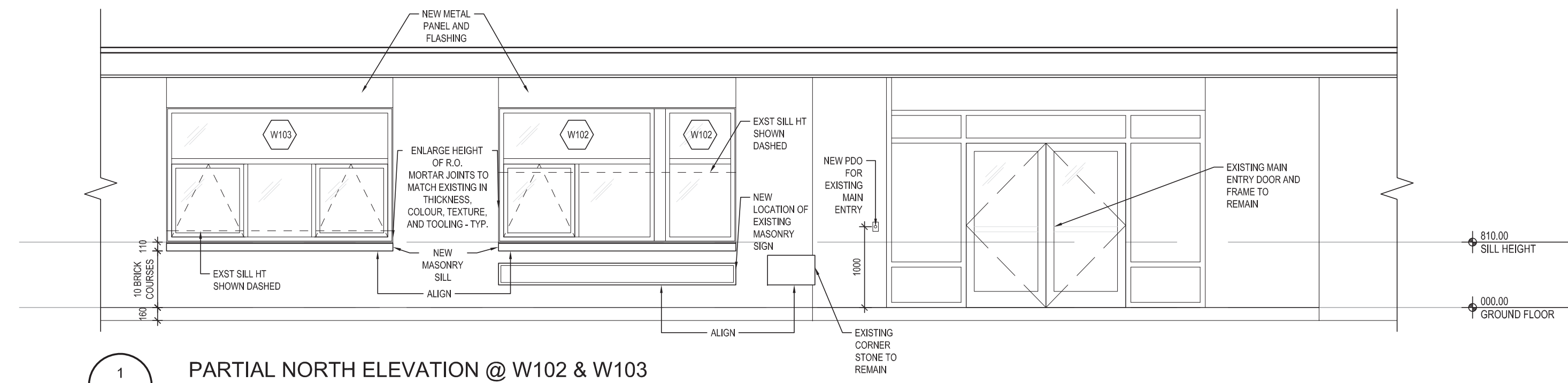
PARTIAL GROUND FLOOR REFLECTED CEILING PLAN - PROPOSED

PROJECT NO: 20927
 SCALE: 1:50
 DRAWN BY: MY
 REVIEWED BY: DS

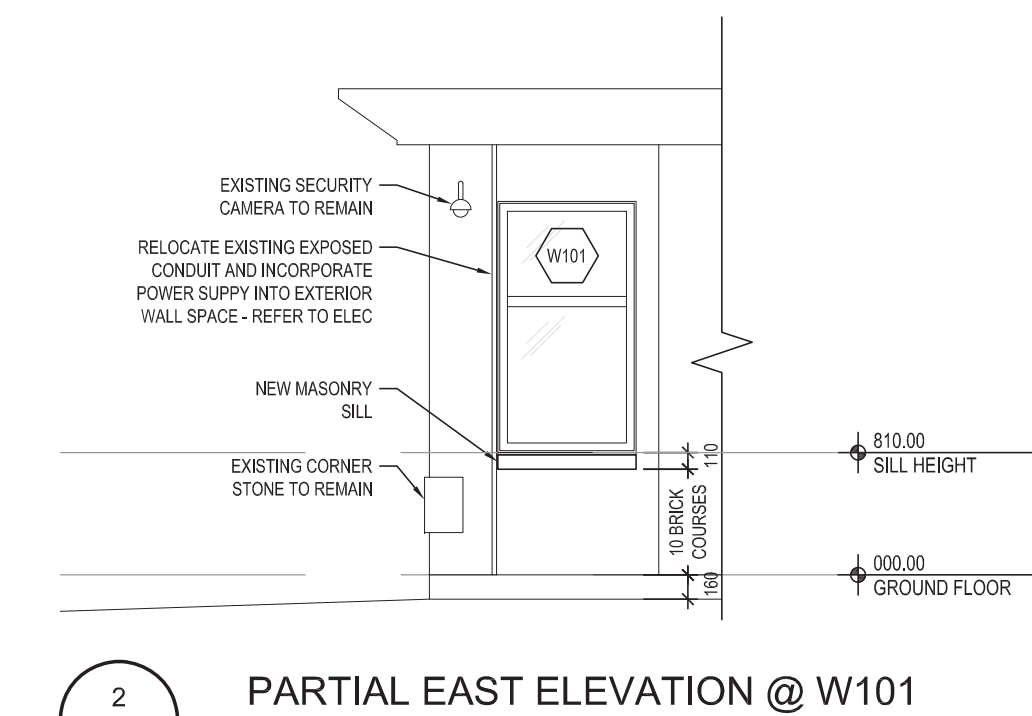
PROJECT NORTH:

DRAWING NO:

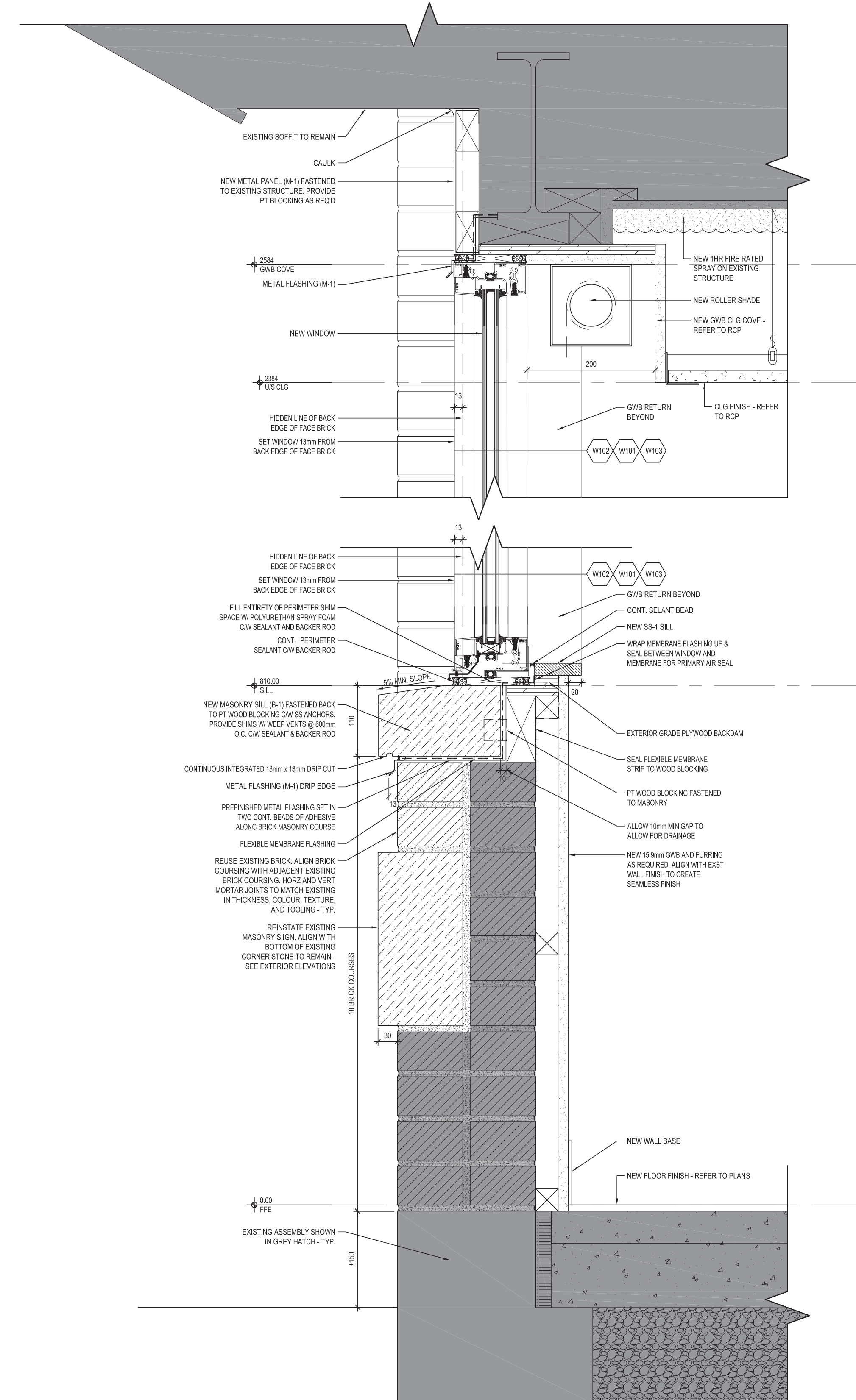
A201



1 PARTIAL NORTH ELEVATION @ W102 & W103
 A301 1:50



2 PARTIAL EAST ELEVATION @ W101
 A301 1:50



3 SECTION @ W102
 A301 1:5

ISSUE DATE:

NO.	DATE	DESCRIPTION
5	17-03-2021	TENDER
4	28-02-2021	80% CONTRACT DOCUMENTS
3	19-02-2021	80% CONTRACT DOCUMENTS
2	05-02-2021	50% CONTRACT DOCUMENTS
1	01-02-2021	100% DESIGN DEVELOPMENT

PROJECT:

Queen Elizabeth Public School - Office Renovation

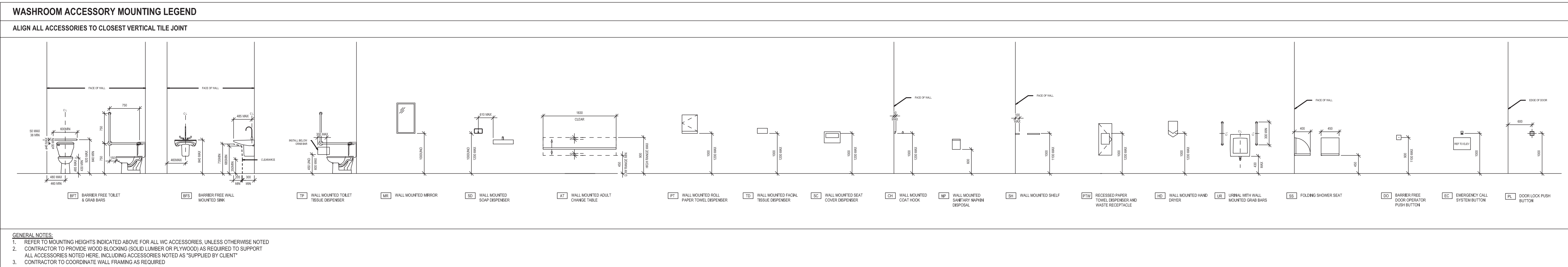
DRAWING TITLE:

PARTIAL EXTERIOR ELEVATIONS

PROJECT NO: 20927
 SCALE: AS NOTED
 DRAWN BY: MY
 REVIEWED BY: DS

DRAWING NO:

A301



SCHEDULE OF WASHROOM ACCESSORIES					
WASHROOM TYPE	ABBREVIATION	DESCRIPTION	MANUFACTURER	PRODUCT	NOTES
ACCESSORIES	GB-1	BARRIER-FREE L-SHAPED GRAB BAR	AMERICAN STANDARD	"1003-NP"	
	GB-2	BARRIER-FREE GRAB BAR	FROST PRODUCTS LTD.	"1001-NP 24"	
	SH	WALL-MOUNTED SHELF	FROST PRODUCTS LTD.	"950-4"	
	MR	WALL-MOUNTED MIRROR	FROST PRODUCTS LTD.	"941-1830" (STOCK SERIES MIRROR)	NON BARRIER-FREE (FOR STAFF W/C)
	MR-BF	WALL-MOUNTED MIRROR (BARRIER-FREE)	FROST PRODUCTS LTD.	"941-1830" (STOCK SERIES MIRROR, FIXED TILT)	BARRIER-FREE (FOR B-F W/C)
ACCESSORIES SUPPLIED BY OWNER & INSTALLED BY CONTRACTOR	NS	WALL-MOUNTED SANITARY NAPKIN DISPENSER	-	-	SUPPLIED BY OWNER, INSTALLED BY CONTRACTOR
	ND	WALL-MOUNTED SANITARY NAPKIN DISPOSAL	-	-	SUPPLIED BY OWNER, INSTALLED BY CONTRACTOR
	SD	WALL-MOUNTED SOAP DISPENSER	-	-	SUPPLIED BY OWNER, INSTALLED BY CONTRACTOR
	PT	WALL-MOUNTED PAPER TOWEL DISPENSER	-	-	SUPPLIED BY OWNER, INSTALLED BY CONTRACTOR
	TP	TOILET PAPER DISPENSER	-	-	SUPPLIED BY OWNER, INSTALLED BY CONTRACTOR

BARRIER-FREE WASHROOM NOTES	
1.	BARRIER-FREE WASHROOMS AS PER OBC 3.8.3.8
2.	DOORS AT B-F WASHROOMS AS PER OBC 3.8.3.8.(1)(A)
3.	GRAB BARS TO BE NOT LESS THAN 30MM AND NOT MORE THAN 40MM IN DIAMETER, AND 38-50MM CLEAR FROM WALL. BARS TO HAVE SLIP-RESISTANT SURFACE. INSTALLED TO RESIST A LOAD OF AT LEAST 1.3 KN APPLIED VERTICALLY OR HORIZONTALLY AS PER OBC 3.8.3.12.(5)
4.	CONTRACTOR IS REQUIRED TO PROVIDE SHOP DRAWINGS OF LAYOUT AND MOCK UP ALL WORK RELATED TO BF WASHROOMS
5.	TOILETS TO BE EQUIPPED WITH BACK SUPPORT WHERE THERE IS NOT SEAT LID OR TANK, AS PER OBC 3.8.3.9.(1)(C), NOT HAVE A SPRING ACTIVATED SEAT, AS PER OBC 3.8.3.9.(1), AND; HAVE HAND-OPERATED FLUSHING CONTROLS THAT ARE OPERABLE USING A CLOSED FIST WITH A FORCE OF NOT MORE THAN 22.2N, AS PER OBC 3.8.3.9.(2)
6.	FAUCETS TO BE EQUIPPED WITH LEVER TYPE HANDLES WITHOUT SPRING LOADING OR OPERATE AUTOMATICALLY, AND BE MOUNTED AS PER OBC 3.8.3.11.(1)(E)

ISSUE DATE:

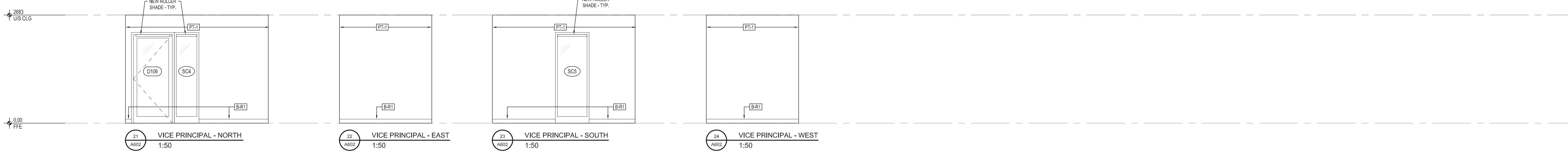
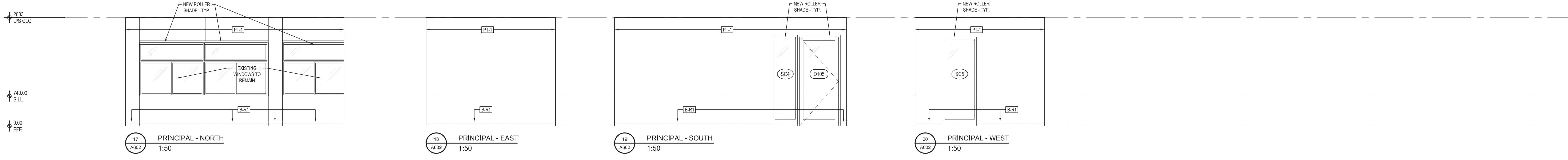
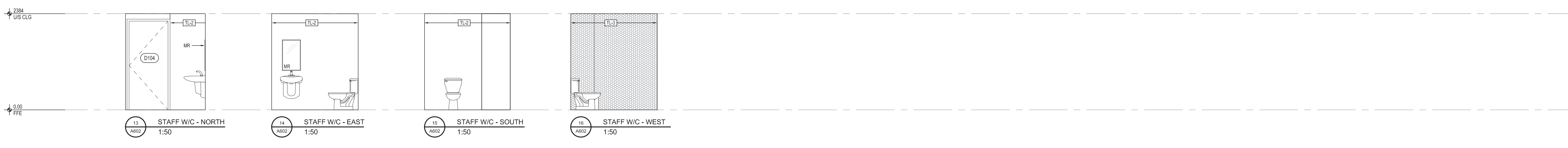
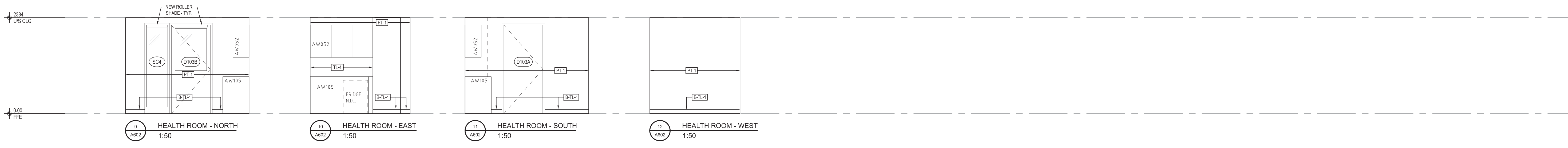
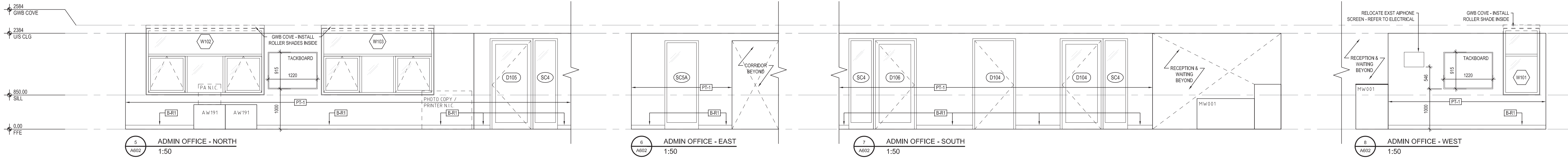
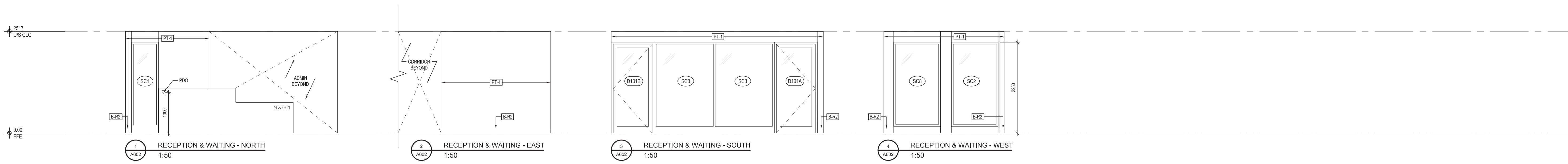
NO.	DATE	DESCRIPTION
4	17-03-21	TENDER
3	28-02-2021	90% CONTRACT DOCUMENTS
2	16-02-2021	80% CONTRACT DOCUMENTS
1	05-02-2021	50% CONTRACT DOCUMENTS

PROJECT:
 Queen Elizabeth Public School - Office Renovation

DRAWING TITLE:
 WASHROOM FIXTURES & ACCESSORIES - MOUNTING LEGEND & SCHEDULE

PROJECT NO: 20927
SCALE: NTS
DRAWN BY: MY
REVIEWED BY: DS

DRAWING NO:
A601



ISSUE DATE:

NO.	DATE	DESCRIPTION
5	17-03-21	TENDER
4	26-02-2021	80% CONTRACT DOCUMENTS
3	16-02-2021	80% CONTRACT DOCUMENTS
2	05-02-2021	50% CONTRACT DOCUMENTS
1	01-02-2021	100% DESIGN DEVELOPMENT

PROJECT:

Queen Elizabeth Public School - Office Renovation

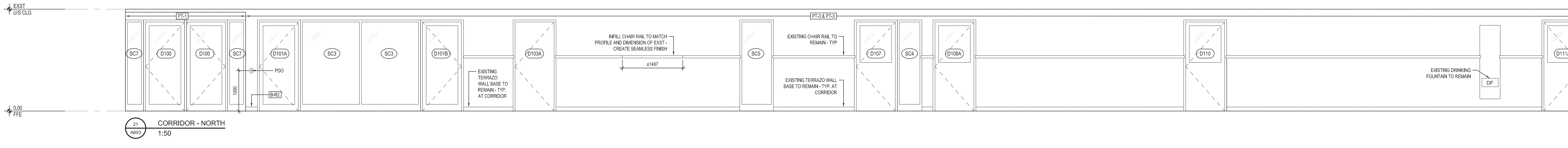
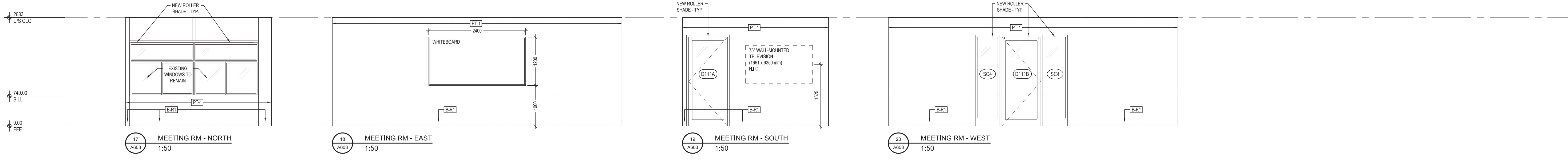
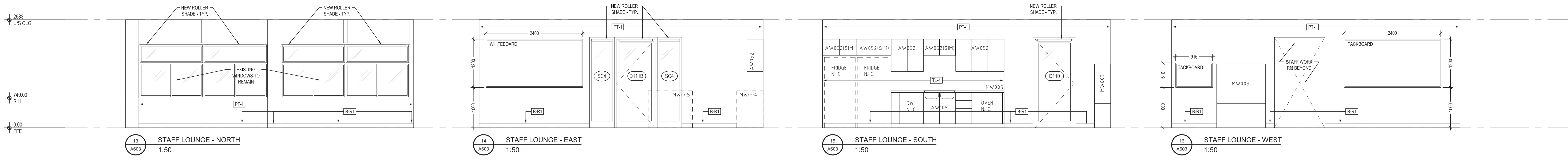
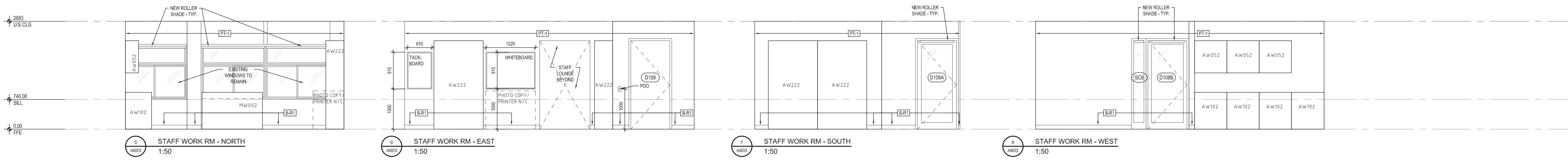
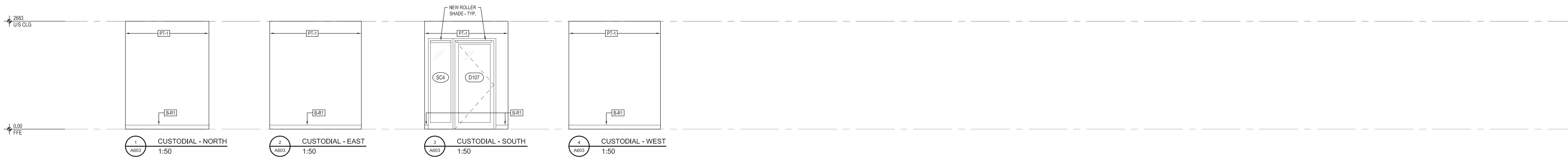
DRAWING TITLE:

INTERIOR ELEVATIONS

PROJECT NO: 20927
 SCALE: 1:50
 DRAWN BY: MY
 REVIEWED BY: DS

DRAWING NO:

A602



ISSUE DATE:

NO.	DATE	DESCRIPTION
5	17-03-21	TENDER
4	26-02-2021	80% CONTRACT DOCUMENTS
3	15-02-2021	80% CONTRACT DOCUMENTS
2	05-02-2021	50% CONTRACT DOCUMENTS
1	01-02-2021	100% DESIGN DEVELOPMENT

PROJECT:

Queen Elizabeth Public School - Office Renovation

DRAWING TITLE:

INTERIOR ELEVATIONS

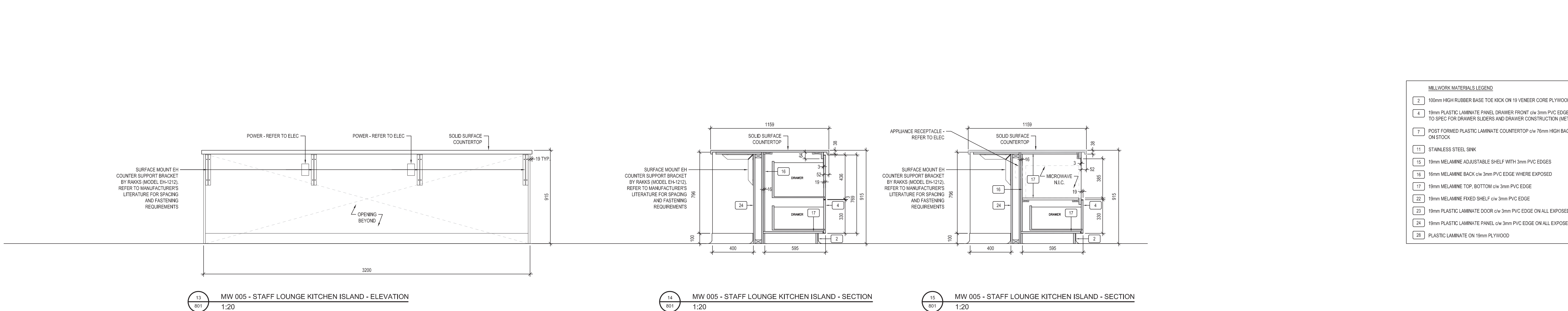
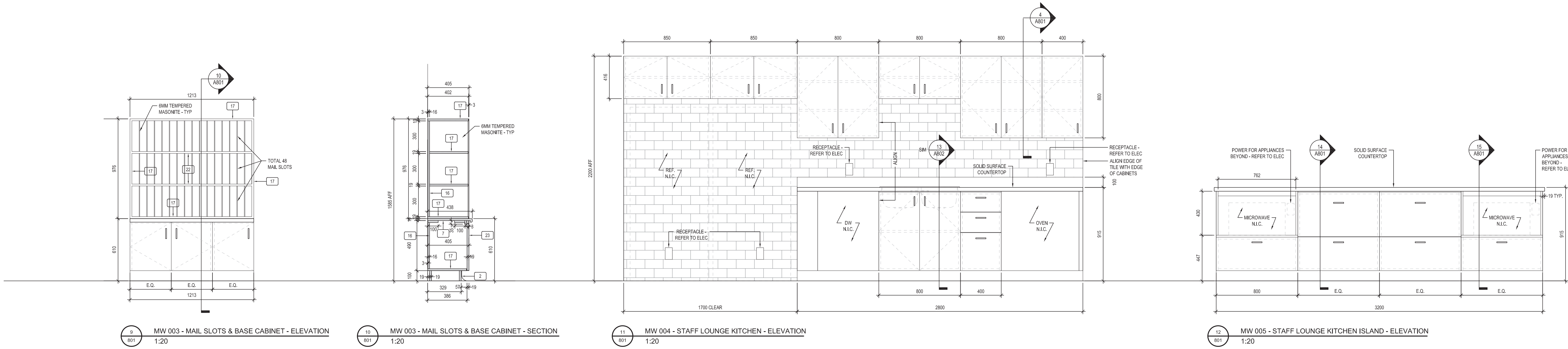
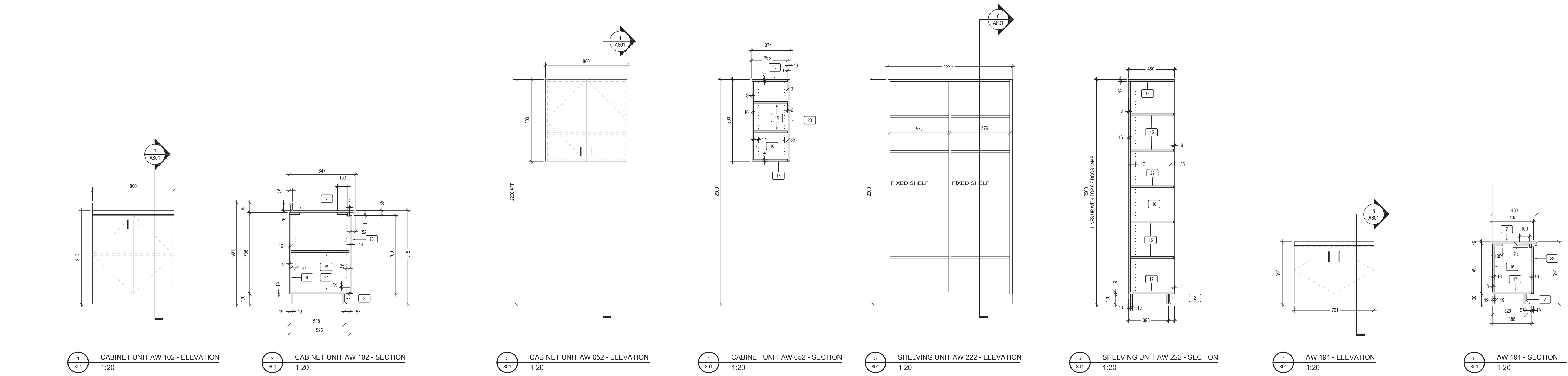
PROJECT NO: 20927
 SCALE: 1:50
 DRAWN BY: MY
 REVIEWED BY: DS

DRAWING NO:

A603

NOTE: This drawing is the property of the architect and may not be reproduced or used without the expressed consent of the architect. The contractor shall be responsible for checking and verifying all levels and dimensions and shall report all discrepancies to the architect and obtain clarification prior to commencing work. Not for construction unless stamped by the architect and issued for such purpose.

DO NOT SCALE DRAWINGS



MILLWORK MATERIALS LEGEND

2	100mm HIGH RUBBER BASE TOE KICK ON 19 VENEER CORE PLYWOOD
4	19mm PLASTIC LAMINATE PANEL DRAWER FRONT c/w 3mm PVC EDGES. REFER TO SPEC FOR DRAWER SLIDERS AND DRAWER CONSTRUCTION (METABOX)
7	POST FORMED PLASTIC LAMINATE COUNTERTOP c/w 76mm HIGH BACKSPASH ON STOCK
11	STAINLESS STEEL SINK
15	19mm MELAMINE ADJUSTABLE SHELF WITH 3mm PVC EDGES
16	19mm MELAMINE BACK c/w 3mm PVC EDGE WHERE EXPOSED
17	19mm MELAMINE TOP, BOTTOM c/w 3mm PVC EDGE
22	19mm MELAMINE FIXED SHELF c/w 3mm PVC EDGE
23	19mm PLASTIC LAMINATE DOOR c/w 3mm PVC EDGE ON ALL EXPOSED EDGES
24	19mm PLASTIC LAMINATE PANEL c/w 3mm PVC EDGE ON ALL EXPOSED EDGES
28	PLASTIC LAMINATE ON 19mm PLYWOOD

ISSUE DATE:

NO.	DATE	DESCRIPTION
3	17-03-21	TENDER
2	26-02-2021	90% CONTRACT DOCUMENTS
1	16-02-2021	80% CONTRACT DOCUMENTS

PROJECT:
 Queen Elizabeth Public School - Office Renovation

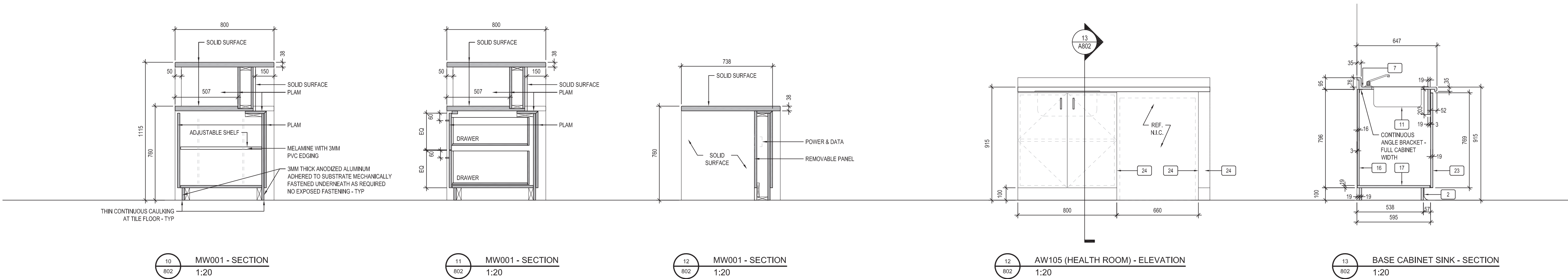
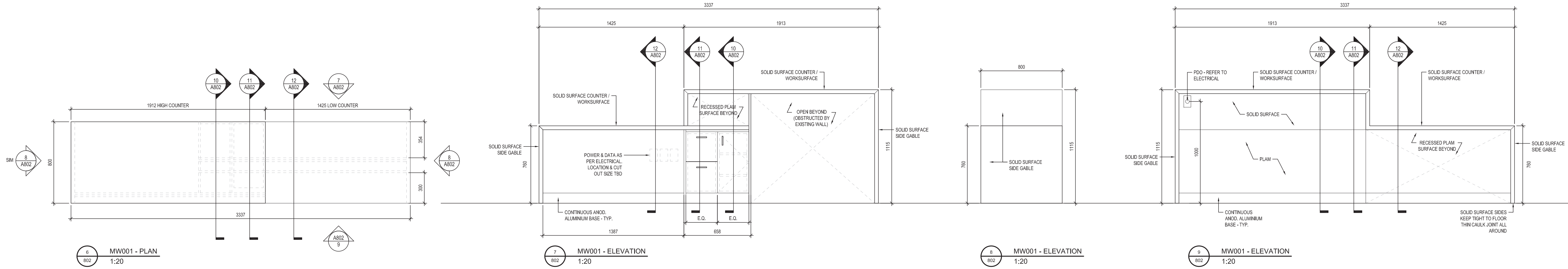
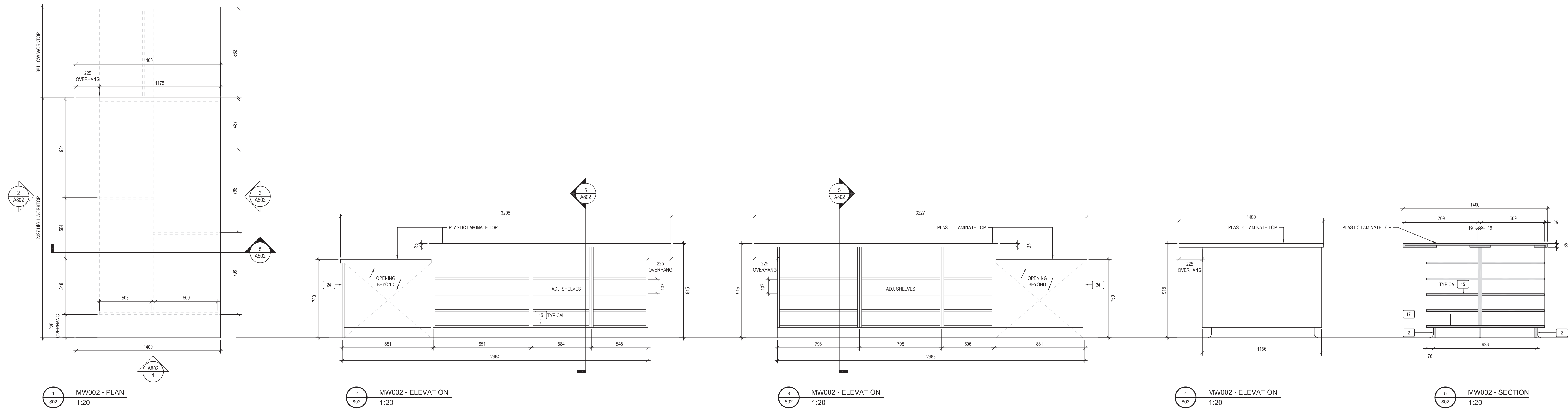
DRAWING TITLE:
 MILLWORK DETAILS

PROJECT NO: 20927
SCALE: 1:20
DRAWN BY: MY
REVIEWED BY: DS

DRAWING NO:
A801

NOTE: This drawing is the property of the architect and may not be reproduced or used without the expressed consent of the architect. The contractor shall be responsible for checking and verifying all levels and dimensions and shall report all discrepancies to the architect and obtain clarification prior to commencing work. Not for construction unless stamped by the architect and issued for such purpose.

DO NOT SCALE DRAWINGS



MILLWORK MATERIALS LEGEND

2	100mm HIGH RUBBER BASE TOE KICK ON 19 VENEER CORE PLYWOOD
4	19mm PLASTIC LAMINATE PANEL DRAWER FRONT c/w 3mm PVC EDGES. REFER TO SPEC FOR DRAWER SLIDERS AND DRAWER CONSTRUCTION (METABOX)
7	POST FORMED PLASTIC LAMINATE COUNTERTOP c/w 76mm HIGH BACKSPLASH ON STOCK
11	STAINLESS STEEL SINK
15	19mm MELAMINE ADJUSTABLE SHELF WITH 3mm PVC EDGES
16	16mm MELAMINE BACK c/w 3mm PVC EDGE WHERE EXPOSED
17	19mm MELAMINE TOP, BOTTOM c/w 3mm PVC EDGE
22	19mm MELAMINE FIXED SHELF c/w 3mm PVC EDGE
23	19mm PLASTIC LAMINATE DOOR c/w 3mm PVC EDGE ON ALL EXPOSED EDGES
24	19mm PLASTIC LAMINATE PANEL c/w 3mm PVC EDGE ON ALL EXPOSED EDGES
28	PLASTIC LAMINATE ON 19mm PLYWOOD

ISSUE DATE:

NO.	DATE	DESCRIPTION
2	17-03-21	TENDER
1	26-02-2021	90% CONTRACT DOCUMENTS

PROJECT:

Queen Elizabeth Public School - Office Renovation

DRAWING TITLE:

MILLWORK DETAILS

PROJECT NO: 20927

SCALE: 1:20

DRAWN BY: MY

REVIEWED BY: DS

DRAWING NO:

A802