

DRAWINGS, THE DESIGN, AND THE DETAILS HEREON REMAIN THE PROPERTY OF THE ARCHITECT AND ARE NOT TO BE ALTERED, COPIED OR REPRODUCED WITHOUT THE ARCHITECT'S EXPRESS WRITTEN CONSENT.

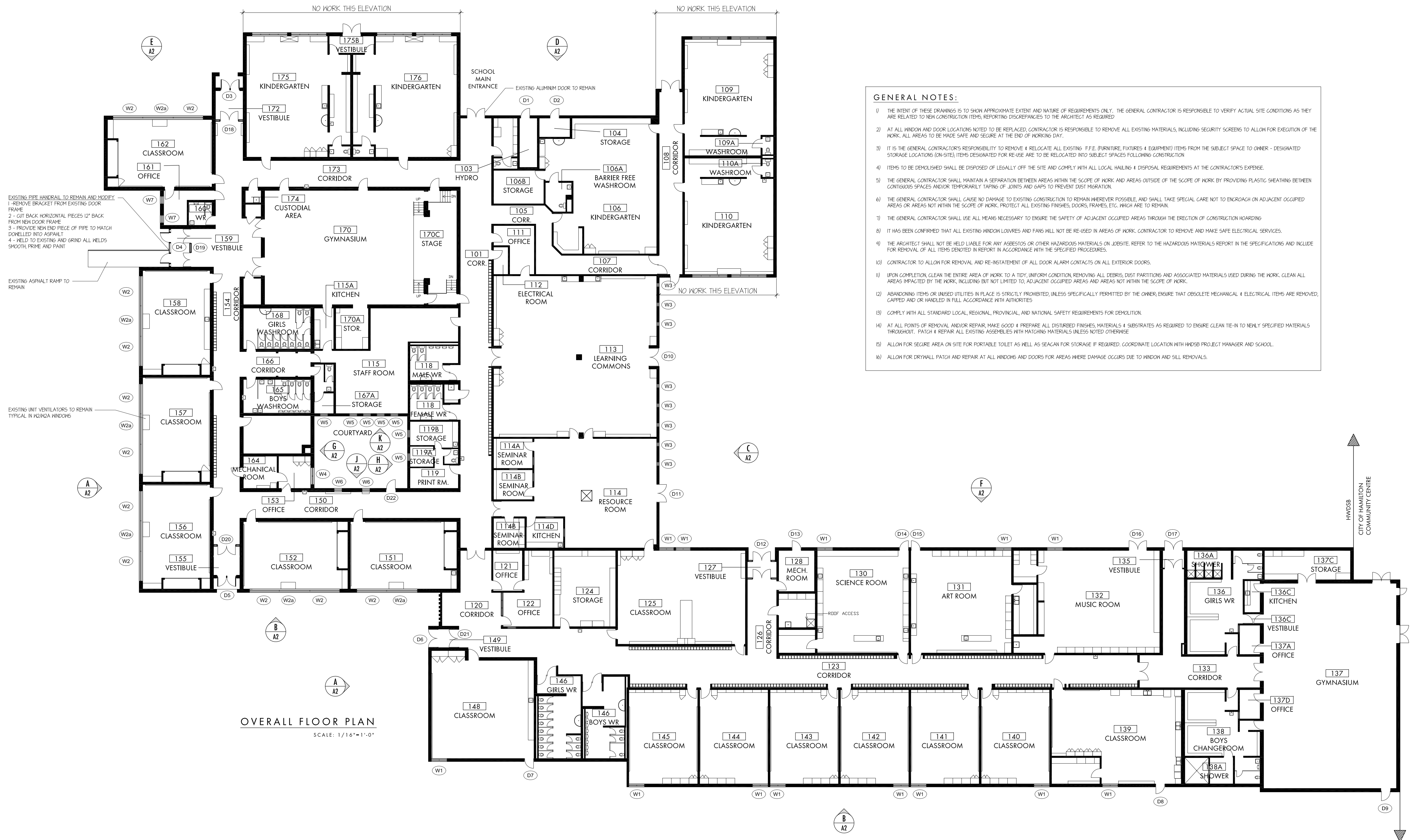
[illegible]

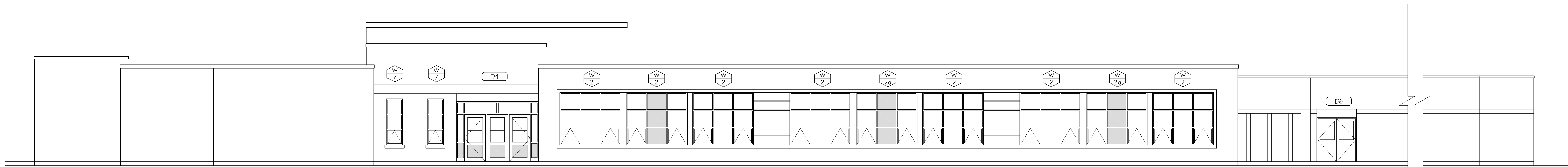
ake Avenue
lementary
School

AL:

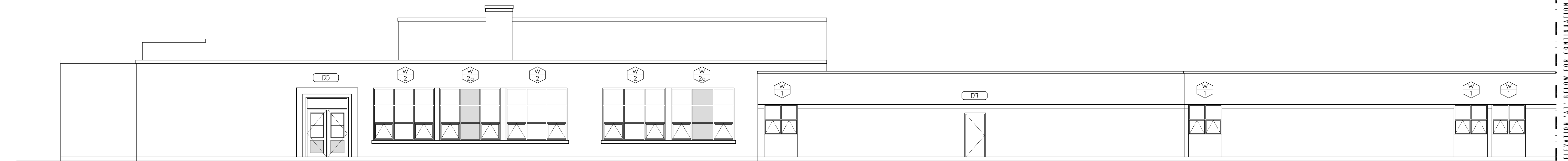
146 JAMES STREET
ST. CATHARINES
ONTARIO L2R 5C5
905-688-6087
 www@whitelinearchitects.com

PLOTTED 1/26/2021 3:26 PM

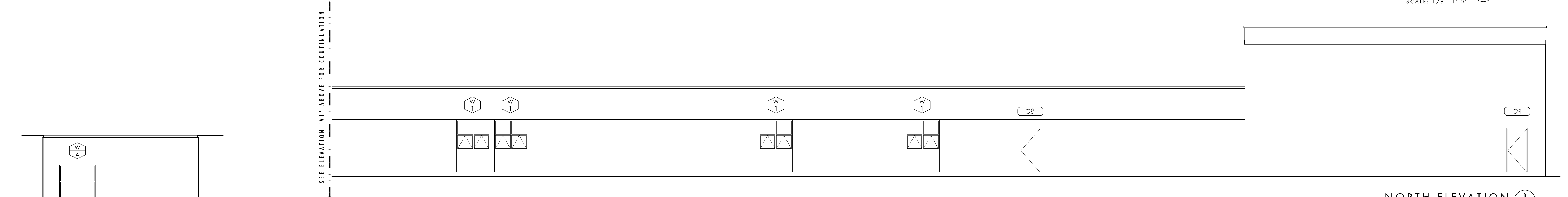




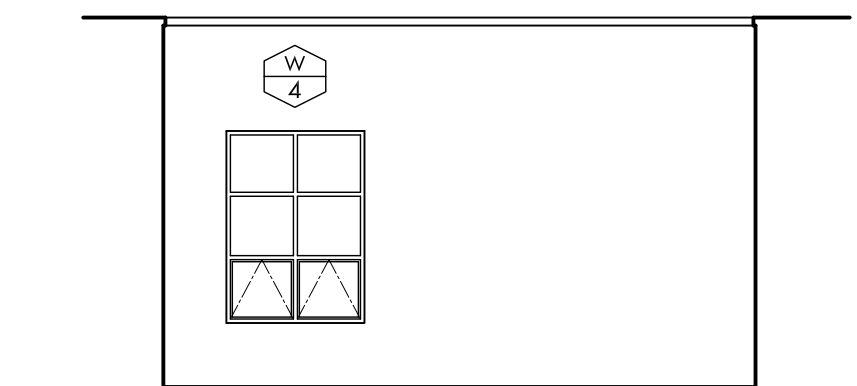
EAST ELEVATION
SCALE: 1/8"=1'-0"



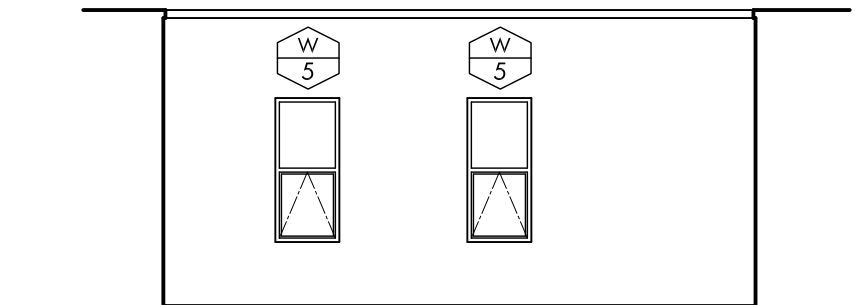
NORTH ELEVATION
SCALE: 1/8"=1'-0"



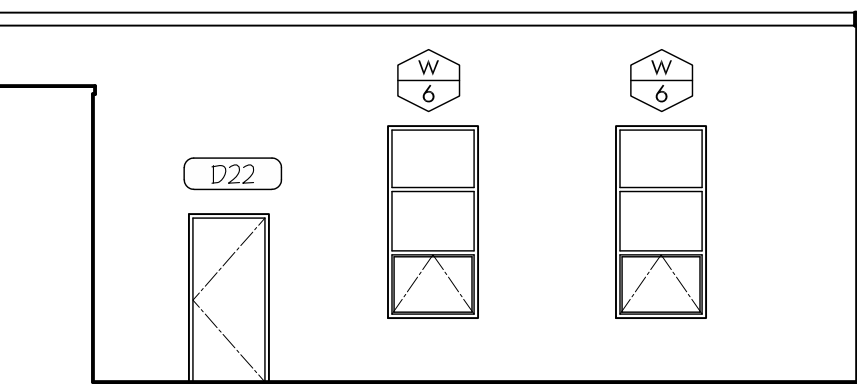
NORTH ELEVATION
SCALE: 1/8"=1'-0"



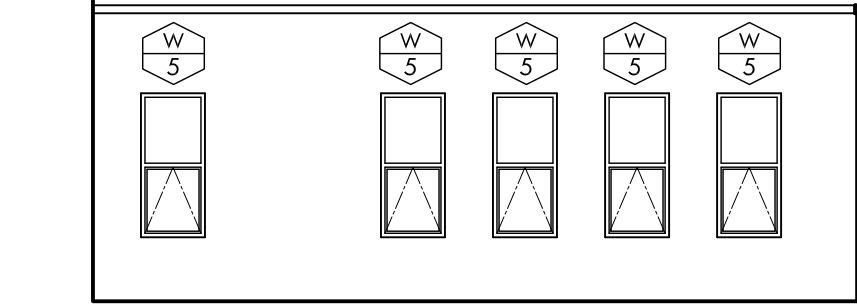
EAST ELEVATION
SCALE: 1/8"=1'-0"



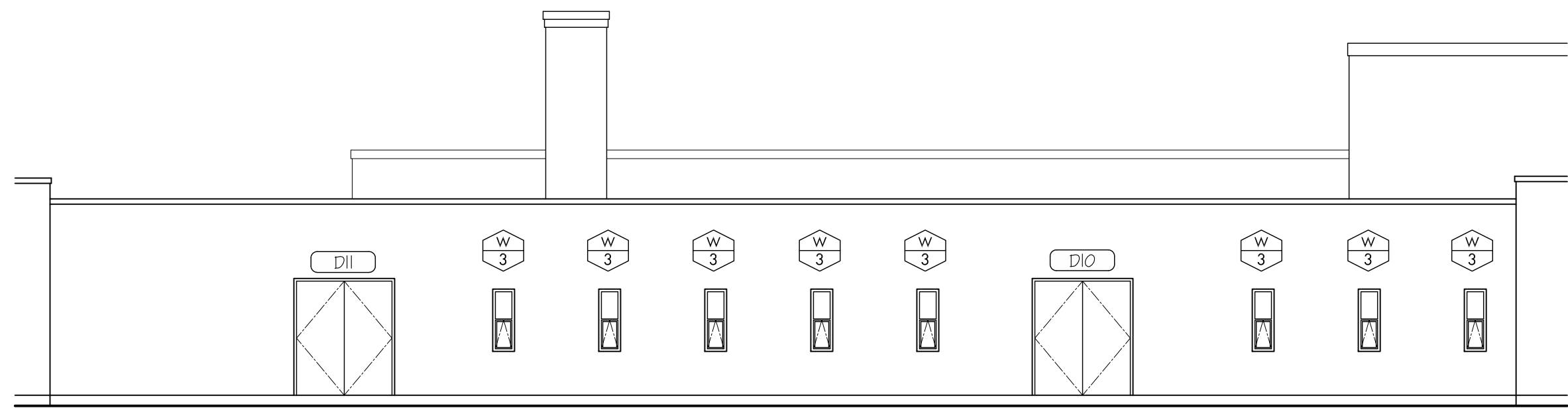
WEST ELEVATION
SCALE: 1/8"=1'-0"



SOUTH ELEVATION
SCALE: 1/8"=1'-0"



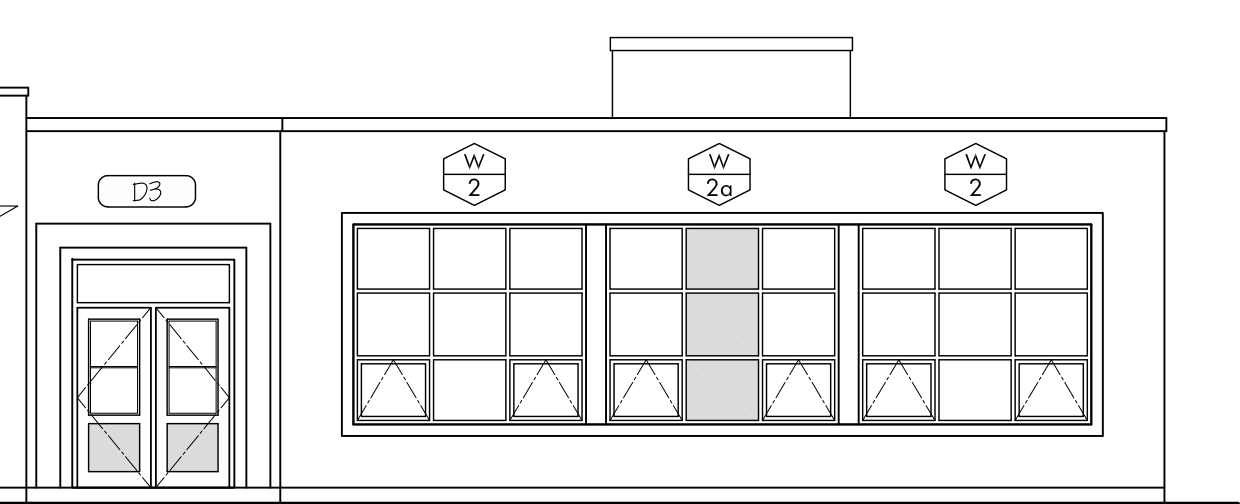
NORTH ELEVATION
SCALE: 1/8"=1'-0"



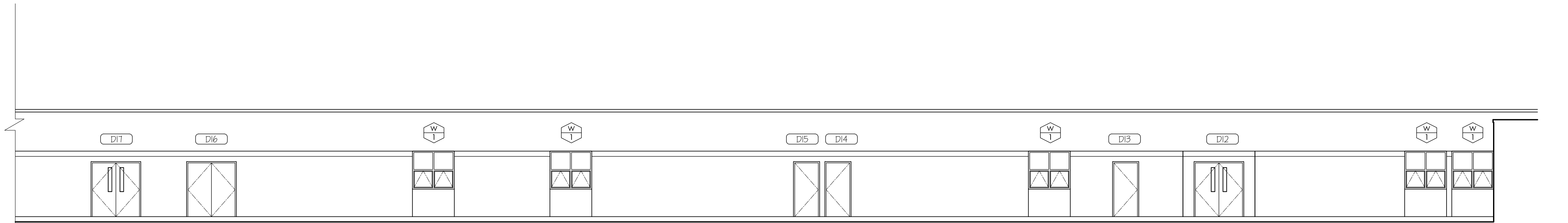
WEST ELEVATION
SCALE: 1/8"=1'-0"



SOUTH ELEVATION
SCALE: 1/8"=1'-0"



SOUTH ELEVATION
SCALE: 1/8"=1'-0"



SOUTH ELEVATION
SCALE: 1/8"=1'-0"

THESE DRAWINGS ARE NOT TO BE SCALED

ALL DRAWINGS, THE DESIGN, AND THE DETAILS THEREON, REMAIN THE PROPERTY OF THE ARCHITECT AND ARE NOT TO BE ALTERED, RE-USED OR REPRODUCED WITHOUT THE ARCHITECT'S EXPRESS WRITTEN CONSENT.

THE CONTRACTOR MUST FIELD VERIFY ALL DIMENSIONS AND MUST CONFIRM & CORRELATE ALL DETAILS WITHIN THE FULL DRAWING PACKAGE, BEING RESPONSIBLE FOR SAME THROUGHOUT CONSTRUCTION, REPORTING ANY DISCREPANCIES TO THE ARCHITECT PRIOR TO COMMENCING THE RELEVANT WORK.

ALL DRAWINGS, DETAILS & SPECIFICATIONS REPRESENTED IN THE DRAWINGS ARE TO BE USED FOR CONSTRUCTION ONLY WHEN ISSUED BY THE ARCHITECT AND NOTED ACCORDINGLY IN THE "ISSUE/REVISIONS" BOX HEREON.

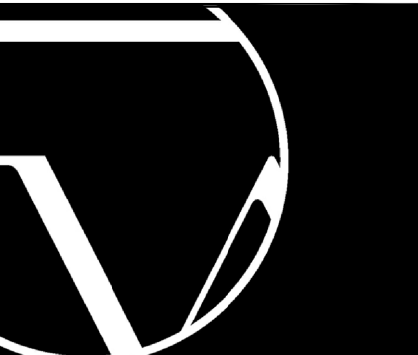
- 1.

PROJECT:
Window Upgrades at:
**Lake Avenue
Elementary
School**

157 Lake Avenue N.,
Hamilton, ON

For the HWDSB

SEAL:



WHITELINE |
Architects Inc.

146 JAMES STREET

ST. CATHARINES

ONTARIO L2R 5C5

905-688-6087

www.whitelinearchitects.com

DRAWING TITLE:
ELEVATIONS

SCALE:
AS NOTED

DRAWN:
D.GORDON

DATE:
OCTOBER 27, 2020

PROJECT #:
2024

DRAWING #:

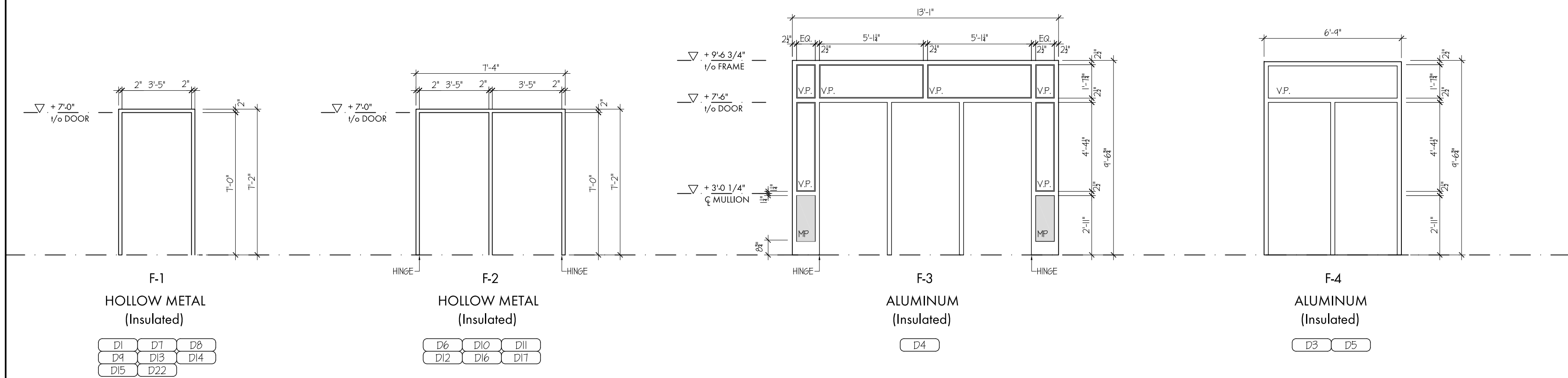
A2

PLOTTED 1/26/2021 3:27 PM

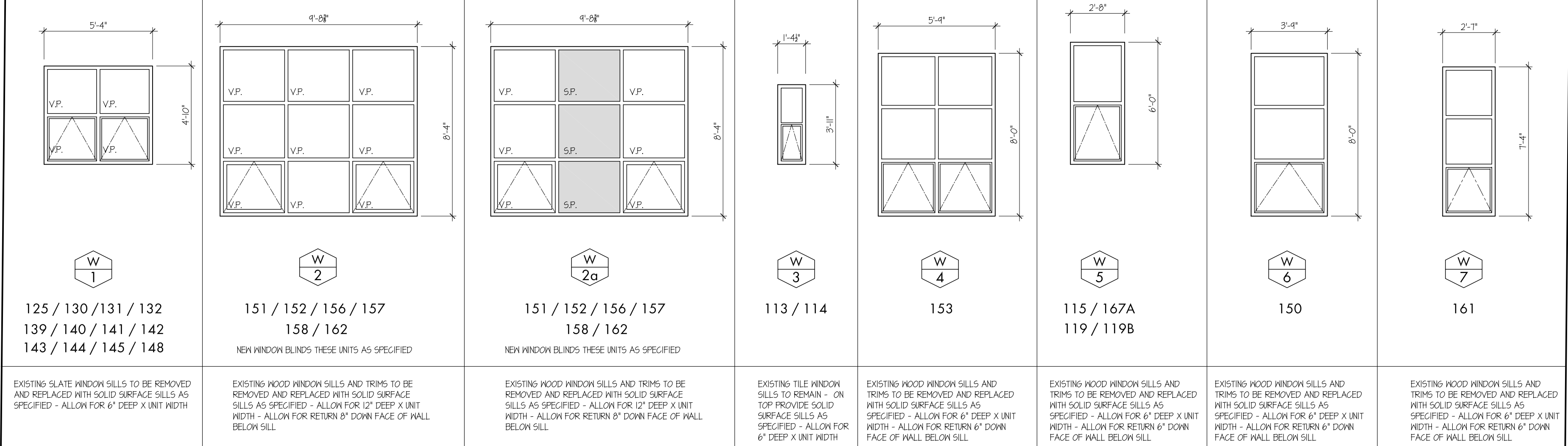
DOOR SCHEDULE

ID #	LOCATION		DOOR				FRAME				RATING	GL. ANOD. FR. gl. HM. HM.TR. O.V.P. PREF. SP. V.P.		- CLEAR ANODIZED - FIRE RATED GLASS - HOLLOW METAL - HOLLOW METAL TRANSOM - OBSCURED VISION PANEL (INSULATED) - PREFINISHED (AS PER SPEC) - SPANDREL (METAL) - VISION PANE (INSULATED)		LEGEND: NOTE A: - ALLOW FOR ALL EXISTING HARDWARE AND DOORS TO BE ADJUSTED TO SIT SQUARE AND TRUE. ALL EXISTING BRASS KICKPLATES AND PUSH PLATES AND PULLS TO BE CLEANED WITH BRASS CLEANER.
NO.	FROM	TO	SIZE	MATERIAL	ELEV.	FINISH	MATERIAL	JAMB	ELEV.	FINISH	DEPTH	FIRE RATING	INSERTS	REMARKS		
D1	EXT	103	3'-0" x 7'-2"	INSULATED HM.	4	PAINT	HOLLOW METAL	A	F-1	PAINT	5 3/4"	--	LOUVRE	--		
D2	EXT	104	E.T.R.	EXISTING HM.	--	PAINT	E.T.R.	--	--	PAINT	--	--	--	--		
D3	EXT	112	2 @ 3'-0" x 7'-6"	INSULATED ALUM.	1	ANOD	THERMALLY BROKEN ALUM.	B	F-4	ANOD	5 3/4"	--	V.P.	--		
D4	EXT	154	2 @ 3'-0" X 7'-6"	INSULATED ALUM.	1	ANOD	THERMALLY BROKEN ALUM.	B	F-3	ANOD	--	--	V.P.	--		
D5	EXT	155	2 @ 3'-0" x 7'-6"	INSULATED ALUM.	1	ANOD	THERMALLY BROKEN ALUM.	B	F-4	ANOD	--	--	V.P.	--		
D6	EXT	144	2 @ 3'-0" x 7'-0"	INSULATED HM.	2	PAINT	HOLLOW METAL	A	F-2	PAINT	--	--	V.P.	--		
D7	EXT	148	3'-0" X 7'-0"	INSULATED HM.	3	PAINT	HOLLOW METAL	A	F-1	PAINT	--	--	--	--		
D8	EXT	134	2 @ 3'-0" x 7'-0"	INSULATED HM.	3	PAINT	HOLLOW METAL	A	F-1	PAINT	5 3/4"	--	--	--		
D4	EXT	131	3'-0" x 7'-0"	INSULATED HM.	3	PAINT	HOLLOW METAL	A	F-1	PAINT	5 3/4"	--	--	--		
D10	EXT	113	2 @ 3'-0" x 7'-2"	INSULATED HM.	3	PAINT	HOLLOW METAL	A	F-2	PAINT	5 3/4"	--	--	--		
D11	EXT	114	2 @ 3'-0" X 7'-2"	INSULATED HM.	3	PAINT	HOLLOW METAL	A	F-2	PAINT	--	--	--	--		
D12	EXT	121	2 @ 3'-0" x 7'-0"	INSULATED HM.	3	PAINT	HOLLOW METAL	A	F-2	PAINT	5 3/4"	--	V.P.	--		
D13	EXT	128	3'-0" x 7'-0"	INSULATED HM.	3	PAINT	HOLLOW METAL	A	F-1	PAINT	--	--	--	--		
D14	EXT	130	3'-0" X 7'-0"	INSULATED HM.	3	PAINT	HOLLOW METAL	A	F-1	PAINT	--	--	--	--		
D15	EXT	131	3'-0" X 7'-0"	INSULATED HM.	3	PAINT	HOLLOW METAL	A	F-1	PAINT	--	--	--	--		
D16	EXT	132	2 @ 3'-0" X 7'-0"	INSULATED HM.	3	PAINT	HOLLOW METAL	A	F-2	PAINT	--	--	--	--		
D17	EXT	135	2 @ 3'-0" x 7'-0"	INSULATED HM.	3	PAINT	HOLLOW METAL	A	F-2	PAINT	--	--	V.P.	--		
D18	112	113	E.T.R.	ETR	ETR	ETR	ETR	A	ETR	ETR	--	--	--	NOTE A		
D14	154	154	ETR	ETR	ETR	ETR	ETR	A	ETR	ETR	--	--	--	NOTE A		
D20	155	150	ETR	ETR	ETR	ETR	ETR	A	ETR	ETR	--	--	--	NOTE A		
D21	144	120	ETR	ETR	ETR	ETR	ETR	A	ETR	ETR	--	--	--	NOTE A		
D22	EXT	150	3'-0" x 7'-2"	INSULATED HM.	3	PAINT	HOLLOW METAL	A	F-1	PAINT	--	--	--	--		

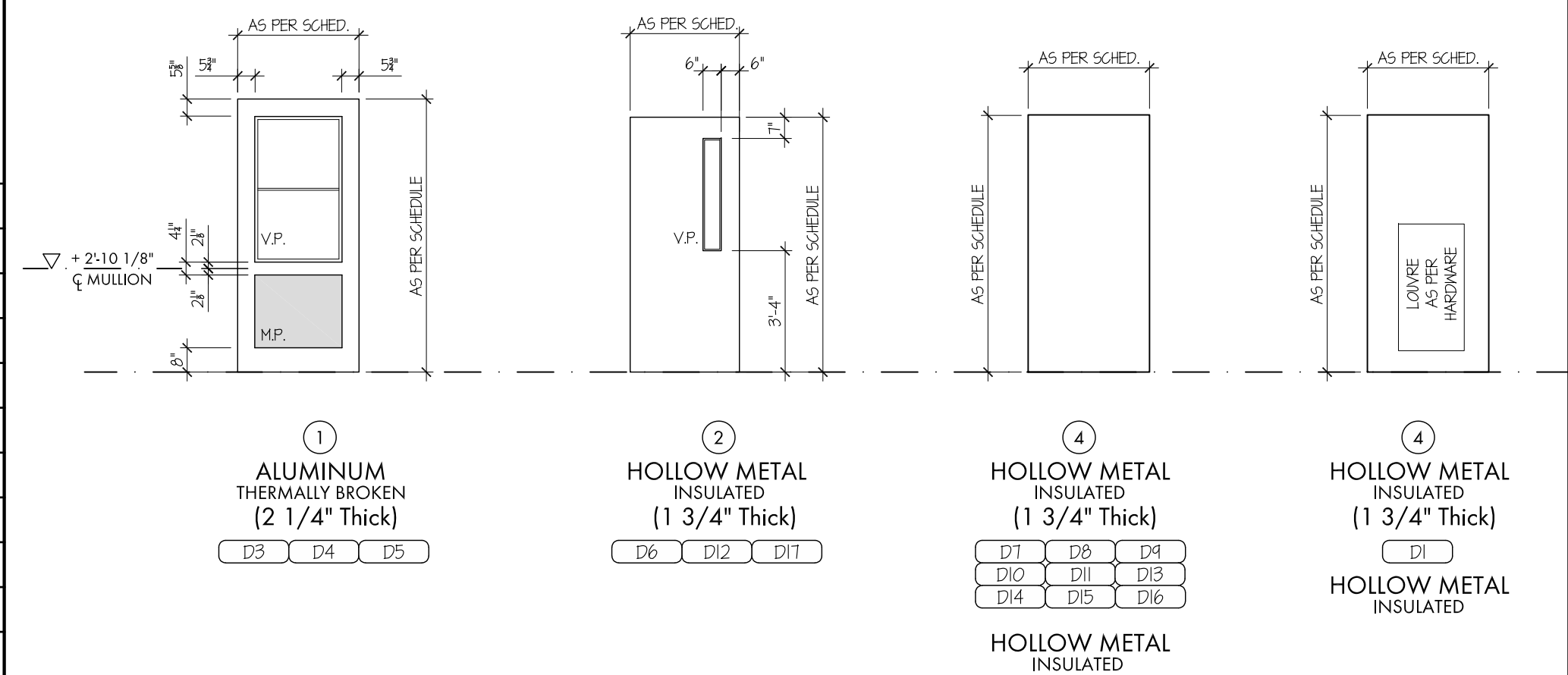
EXTERIOR FRAMES



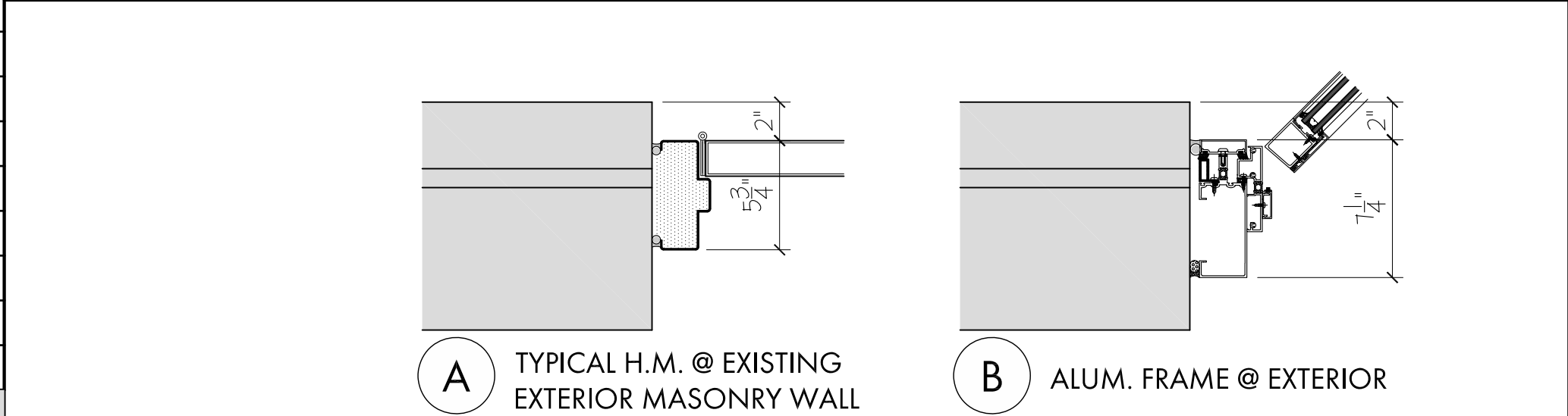
EXTERIOR WINDOW / FRAMES TYPES



D O O R T Y P E S



J A M B T Y P E S



GENERAL NOTES (DOORS):

1. ALL DOOR SWING ORIENTATIONS TO BE AS PER FLOOR PLANS THROUGHOUT.
2. SHADED AREAS ON SCHEDULE INDICATE EXISTING ITEMS TO REMAIN
3. SITE VERIFY DIMENSIONS & SURROUNDING CONDITIONS ON ALL DOORS RESPECTIVE TO EXISTING OPENING SIZES & ANCHORING REQUIREMENTS ETC. PRIOR TO ORDERING

THESE DRAWINGS ARE NOT TO BE SCALED

ALL DRAWINGS, THE DESIGN, AND THE DETAILS THEREON REMAIN THE PROPERTY OF THE ARCHITECT AND ARE NOT TO BE ALTERED, RE-USED OR REPRODUCED WITHOUT THE ARCHITECT'S EXPRESS WRITTEN CONSENT.

THE CONTRACTOR MUST FIELD VERIFY ALL DIMENSIONS AND MUST CONFIRM & CORRELATE ALL DETAILS WITHIN THE FULL DRAWING PACKAGE BEING RESPONSIBLE FOR SAME THROUGHOUT CONSTRUCTION, REPORTING ANY DISCREPANCIES TO THE ARCHITECT PRIOR TO COMMENCING THE RELEVANT WORK.

ALL DRAWINGS, DETAILS & SPECIFICATIONS
REPRESENTED IN THE DRAWINGS ARE TO BE
USED FOR CONSTRUCTION ONLY WHEN ISSUED
BY THE ARCHITECT AND NOTED ACCORDINGLY IN
THE "ISSUE/REVISIONS" BOX HEREON.

1.

PROJECT:
Window Upgrades at:

Lake Avenue
Elementary
School

157 Lake Avenue N.,
Hamilton, ON

For the HWDSB

SEAL: _____



—WHITELINE |
Architects Inc.

146 JAMES STREET

ST. CATHARINES

ONTARIO L2R 5C5

 905-688-6087

 www.whitelinearchitects.com

DRAWING TITLE:

Door and Window Schedule

SCALE:

AS NOTED

DRAWN: _____

D. GORDON

JULY 08, 2020

PROJECT #:

2011

DRAWING #:

A3
