



Hazardous Building Materials Assessment

Window and Door Replacement
Lake Avenue Elementary
School

157 Lake Avenue North,
Hamilton, Ontario

Prepared for:

Hamilton-Wentworth District School Board

20 Education Court
Hamilton, Ontario, L9A 0B9

February 10, 2021

Pinchin File: 269536.024



Hazardous Building Materials Assessment

Lake Avenue Elementary School, 157 Lake Avenue North, Hamilton, Ontario
Hamilton-Wentworth District School Board

February 10, 2021
Pinchin File: 269536.024

Issued to: Hamilton-Wentworth District School Board
Issued on: February 10, 2021
Pinchin File: 269536.024
Issuing Office: Hamilton, ON

Author: _____
Angela Coric, HBESc., EPt.
Project Coordinator
365.336.3275
acoric@pinchin.com

Author: _____
Stephen Holmquist,
Project Technologist
289.339.8072
sholmquist@pinchin.com

Reviewer: _____
Damian Palus, C.E.T.
Operations Manager
289.678.0694
dpalus@pinchin.com



EXECUTIVE SUMMARY

Hamilton-Wentworth District School Board (Client) retained Pinchin Ltd. (Pinchin) to conduct a hazardous building materials assessment of Lake Avenue School located at 157 Lake Avenue North, Hamilton, Ontario. Pinchin performed the assessment on January 19, 2021 and February 8, 2021.

The objective of the assessment was to identify specified hazardous building materials in preparation for the exterior window and door replacement project. The results of this assessment are intended for use with a properly developed scope of work and performance specification.

The assessed areas were limited to parts of the building that will be affected by the proposed exterior window and door replacement project as shown in the appended drawings.

SUMMARY OF FINDINGS

Asbestos: Asbestos-containing materials (ACM) are present as follows:

- Vinyl floor tiles – non-friable; and
- Caulking/ butyl sealant – non-friable.

Lead: Lead is present as follows:

- Paints containing lead are present.
- Batteries of emergency lights.
- Electrical components, including wiring connectors, grounding conductors, and solder.
- Solder on pipe connections.

Silica: Crystalline silica is present in concrete, mortar, masonry, and plaster.

Mercury: Mercury vapour is present in light tubes.

Polychlorinated Biphenyls (PCBs): PCBs may be present in light ballasts.

Mould and Water Damage: Visible mould and water damage was not observed.



SUMMARY OF RECOMMENDATIONS

The following is a summary of significant recommendations; refer to the body of the report for detailed recommendations.

1. Regardless of planned construction work due to the condition and location of the material; remediate the following materials:
2. Prepare specifications for the hazardous material removal required for the planned work.
3. Conduct further investigation of the following items, which could not be completed during this assessment due to limitations on scope, occupancy, or being in service at the time of the assessment:
 - a. Any materials listed as exclusions in this report, prior to disturbance.
4. Do not disturb suspected hazardous building materials discovered during the planned work, which have not been identified in this report and arrange for further evaluation and testing.
5. Remove and dispose of asbestos-containing materials if disturbed by the planned renovation work.
6. Remove and properly dispose of PCB ballasts when fixtures are decommissioned.
7. Recycle mercury-containing light tubes when removed from service.
8. Follow appropriate safe work procedures when handling or disturbing silica and lead.

This Executive Summary is subject to the same standard limitations as contained in the report and must be read in conjunction with the entire report.



TABLE OF CONTENTS

1.0	INTRODUCTION AND SCOPE	1
1.1	Scope of Assessment.....	1
2.0	BACKGROUND INFORMATION	2
2.1	Building Description	2
2.2	Existing Reports.....	2
3.0	FINDINGS	2
3.1	Asbestos	3
3.2	Lead	14
3.3	Silica	16
3.4	Mercury	16
3.5	Polychlorinated Biphenyls	16
3.6	Mould	18
4.0	RECOMMENDATIONS.....	18
4.1	General	18
4.2	Building Demolition or Renovation Work	19
5.0	TERMS AND LIMITATIONS	20
6.0	REFERENCES.....	21

APPENDICES

APPENDIX I	Drawings
APPENDIX II-A	Asbestos Analytical Certificates
APPENDIX II-B	Lead Analytical Certificates
APPENDIX II-C	PCB Analytical Certificates
APPENDIX III	Methodology
APPENDIX IV	Location Summary Report
APPENDIX V	Hazardous Materials Summary Report / Sample Log
APPENDIX VI	HMIS Data Report



1.0 INTRODUCTION AND SCOPE

Hamilton-Wentworth District School Board (Client) retained Pinchin Ltd. (Pinchin) to conduct a hazardous building materials assessment of Lake Avenue School located at 157 Lake Avenue North, Hamilton, Ontario.

Pinchin performed the assessment on January 19, 2021 and February 8, 2021. The surveyor was unaccompanied during the assessment. The assessed area was occupied at the time of the assessment.

The objective of the assessment was to identify specified hazardous building materials in preparation for building renovation. The results of this assessment are intended for use with a properly developed scope of work and performance specification.

The proposed renovations as identified by the Client include; the replacement of windows and exterior doors throughout the building.

1.1 Scope of Assessment

The assessment was performed to establish the location and type of specified hazardous building materials incorporated in the structure(s) and its finishes. This assessment is intended to be used for renovation purposes only, and may not provide sufficient detail for long term management of hazardous materials as required by Health and Safety regulations.

The extent of the assessed area was defined by the Client and is shown on the appended drawings.

For the purpose of the assessment and this report, hazardous building materials are defined as follows:

- Asbestos
- Lead
- Silica
- Mercury
- Polychlorinated Biphenyls (PCBs)
- Mould

The following Designated Substances are not typically found in building materials in a composition/state that is hazardous and were not included in this assessment:

- Arsenic
- Acrylonitrile
- Benzene



- Coke oven emissions
- Ethylene oxide
- Isocyanates
- Vinyl chloride monomer

2.0 BACKGROUND INFORMATION

2.1 Building Description

Description Item	Details
Use	Elementary School
Number of Floors	The building is one storey.
Total Area	The total assessed area is approximately 10,000 square feet.
Year of Construction	The building was constructed in 1951.
Structure	Structural steel and concrete
Exterior Cladding	Brick
HVAC	Not Assessed
Roof	Not Assessed
Flooring	Vinyl floor tiles, terrazzo, and laminate
Interior Walls	Concrete block, plaster and drywall
Ceilings	Acoustic ceiling tiles, plaster

2.2 Existing Reports

Pinchin was provided with the following reports, which have been reviewed as part of this assessment:

- “*Lake Avenue School, Asbestos Inventory*”, dated December 2020, Prepared by Regulated Substances Team, The Hamilton-Wentworth District School Board.
- “*Corridor and Washroom Hazardous Building Materials Assessment*”, dated June 8, 2017. Prepared by Pinchin Ltd. Pinchin Project No. 200200.011.

3.0 FINDINGS

The following section summarizes the findings of the assessment and provides a general description of the hazardous materials identified and their locations. For details on approximate quantities, assessment and locations of hazardous materials; refer to the Hazardous Material Summary Report and All Data Report in Appendix V and VI.

3.1 Asbestos

3.1.1 Pipe Insulation

Pipes in the assessed are insulated with fibreglass, or other non-asbestos insulation such as mineral fibre or elastomeric foam insulation.

Pipes insulated with asbestos-containing insulations may be present in inaccessible spaces such as above solid ceilings, in chases, in column enclosures and within shafts.

3.1.2 Duct Insulation and Mastic

Ducts are either uninsulated or insulated with non-asbestos fibreglass (foil-faced or canvas).

3.1.3 Mechanical Equipment Insulation

Mechanical equipment (radiators) is either uninsulated or insulated with non-asbestos fibreglass.

3.1.4 Vermiculite

Destructive testing was conducted of masonry block walls. The masonry block walls were penetrated in various locations, loose fill vermiculite was not observed within the cavities. The locations of destructive testing have been indicated on the drawings in Appendix I.



Photo 1

3.1.5 Acoustic Ceiling Tiles

Acoustic ceiling tiles are present in the assessed area, as follows:

Size, Type, Pattern, Photo #	Locations (Location #)	Sample Number or Date Code	Asbestos Type
24" x 48", lay-in, pinhole and fleck, Photo 1	1971 (Location 1)	08/16/12	None

All ceiling tiles are presumed to be non-asbestos based on the date of manufacture determined from the date stamp applied to the top of the tiles. The tiles were manufactured after asbestos was stopped being used in acoustic ceiling tiles.



Photo 1

3.1.6 *Plaster and Stucco*

Plaster present on walls and ceilings throughout the assessed area does not contain asbestos (samples 0001A-C; lab report reference 1710017 and 2975-32-C01-C07, photo 1).

Textured plaster present on the walls in the corridor does not contain asbestos (Location 3, sample 0002A-C, photo 2).



Photo 1



Photo 2



Photo 1

3.1.7 Vinyl Floor Tiles

Vinyl floor tiles are present as follows:

Size, Pattern, Colour	Locations (Location #)	Sample Number	Asbestos Type (tile)	Asbestos Type (mastic)
12" x 12", green with dark green fleck, photo 1	1971 (Location 1)	S0002A-C	None Detected	None Detected
12" x 12", grey with grey fleck, photo 2	1971 (Location 1)	S0004A-C	None Detected	None Detected
12" x 12", green with white fleck, photo 3	1974 (Location 4) and 1982 (Location 5)	S0012A-C	None Detected	None Detected
12" x 12", beige, photo 4	1974 (Location 4)	S0017A-C	None Detected	None Detected
12" x 12", orange with white lines, photo 5	1974 (Location 4)	S0021A-C	None Detected	None Detected
12" x 12", brown with white lines, photo 6	1982 (Location 5)	S0024A-C	Chrysotile	None Detected
12" x 12", cream with brown fleck, photo 7	1971 (Location 1)	N/A	Presumed	Presumed
9" x 9", black and white checkered pattern, photo 8	1951 (Location 3)	N/A	Presumed	Presumed

The vinyl floor tiles are non-friable and are in good condition.



Hazardous Building Materials Assessment

Lake Avenue Elementary School, 157 Lake Avenue North, Hamilton, Ontario
Hamilton-Wentworth District School Board

February 10, 2021
Pinchin File: 269536.024

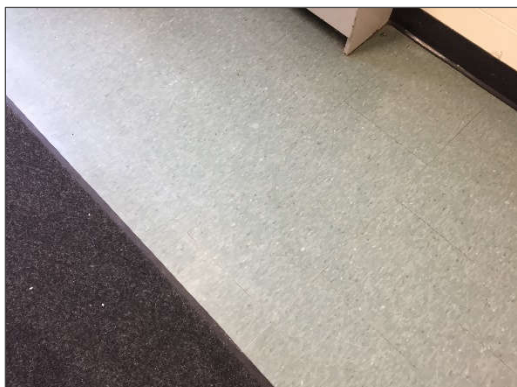


Photo 1

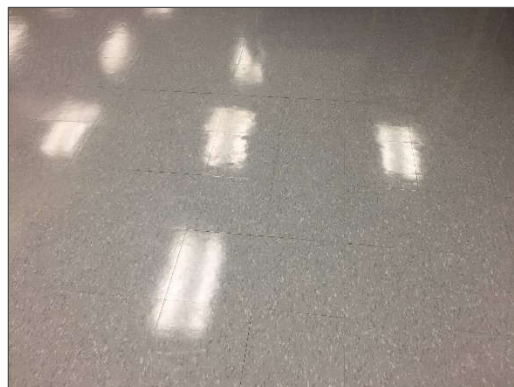


Photo 2



Photo 3

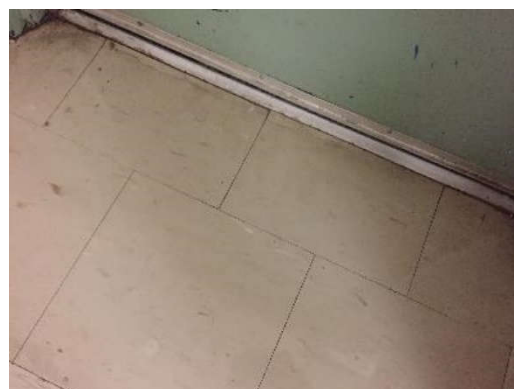


Photo 4



Photo 5



Photo 6



Photo 7

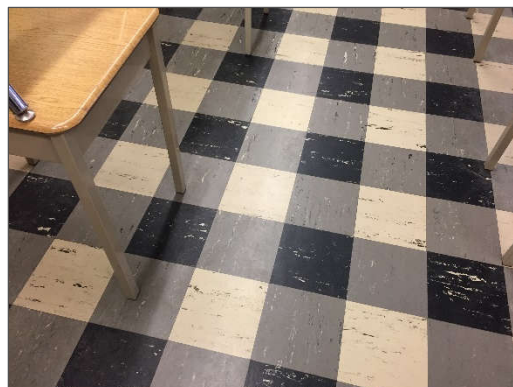


Photo 8

3.1.8 Sealants, Caulking, and Putty

The following table presents a summary of caulking, sealants and putties present:

Material and Colour	Location (Location #)	Sample Number	Asbestos Type
Caulking, grey, photo 1	Around interior windows, 1971 (Location 1)	S0001A-C	None Detected
Caulking, grey, photo 2	Around exterior doors, 1971 (Location 1)	S0003A-C	None Detected
Caulking, white, photo 3	Around exterior doors, 2011 (Location 2)	S0005A-C	None Detected
Caulking, grey, photo 4	Around windows, 2011 (Location 2)	S0006A-C	None Detected
Caulking, grey, photo 5	Around exterior windows, 1951 (Location 3)	S0007A-C	None Detected
Butyl tape, black, photo 6	On doors, 1951 (Location 3)	S0008A-C	None Detected
Caulking, grey, photo 7	At exterior doors, 1951 (Location 3)	S0009A-C	Chrysotile
Butyl tape, grey, photo 8	At exterior windows 1951 (Location 3)	S0010A-C	Chrysotile
Butyl tape, black, photo 9	At exterior windows, 1951 (Location 3)	S0011A-C	Chrysotile
Caulking, brown, photo 10	Around exterior doors, 1974 (Location 4)	S0013A-C	None Detected
Butyl tape, black, photo 11	On exterior doors, 1974 (Location 4)	S0014A-C	None Detected

Material and Colour	Location (Location #)	Sample Number	Asbestos Type
Caulking, grey, photo 12	At exterior windows, 1974 (Location 4)	S0015A-C	Chrysotile
Butyl tape, grey, photo 13	At exterior doors, including second set of doors, 1974 (Location 4)	S0018A-C	Chrysotile
Butyl tape, grey, photo 14	On exterior windows, 1974 (Location 4)	S0019A-C	None Detected
Butyl tape, black, photo 15	On exterior windows, 1974 (Location 4)	S0020A-C	None Detected
Caulking, grey, photo 16	Around exterior doors, 1982 (Location 5)	S0022A-C	None Detected
Caulking, grey, photo 17	On exterior doors, 1982 (Location 5)	S0023A-C	None Detected
Caulking, grey, photo 18	On exterior windows, 1971 (Location 1)	S0025A-C	None Detected
Butyl tape, black, photo 19	On windows 1971 (Location 1)	S0026A-C	None Detected
Caulking, grey, photo 20	Around exterior windows, 1974 (Location 4)	S0027A-C	None Detected
Caulking, grey, photo 21	Around exterior doors, 1974 (Location 4)	S0028A-C	None Detected
Caulking, grey, photo 22	On exterior doors, 1971 (Location 1)	S0029A-C	None Detected
Caulking, white, Photo 23	At exterior windows, 1951 (Location 3)	S0030A-C	Chrysotile

Caulking and sealants are non-friable materials and in good condition.

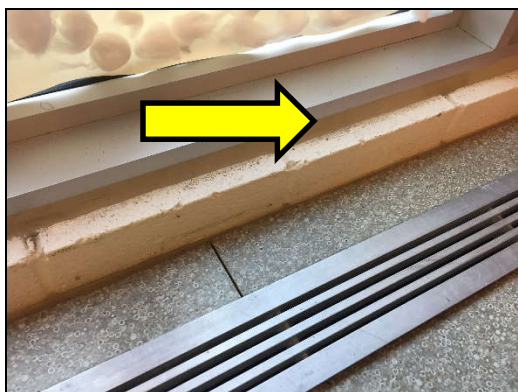


Photo 1

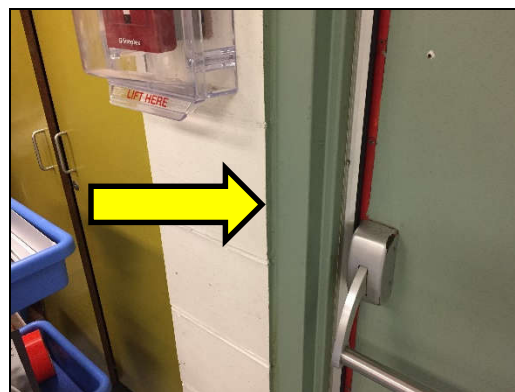


Photo 2



Photo 3

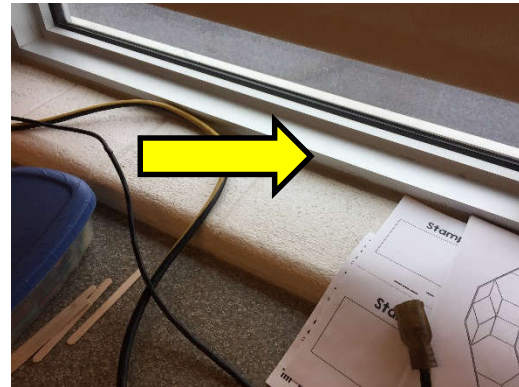


Photo 4



Photo 5

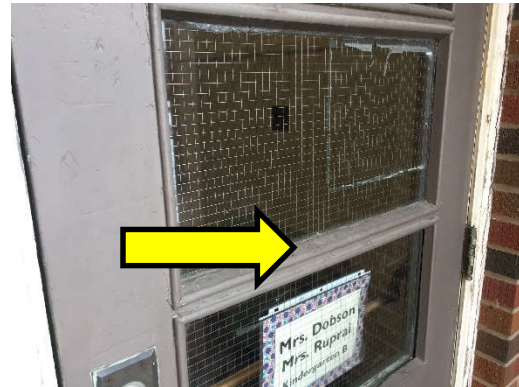


Photo 6



Photo 7

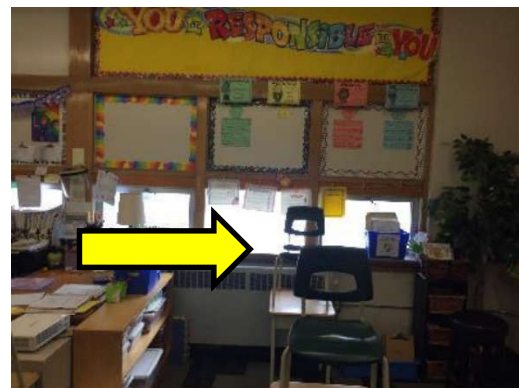


Photo 8



Photo 9



Photo 10



Photo 11



Photo 12



Photo 13

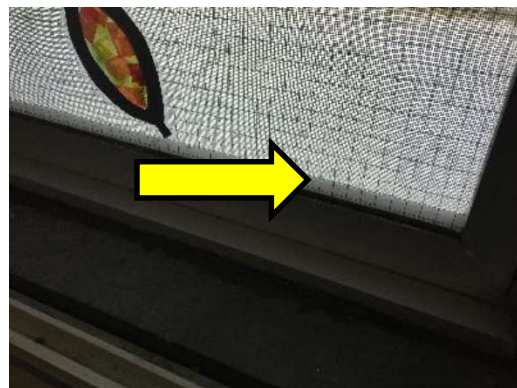


Photo 14



Photo 15



Photo 16



Photo 17



Photo 18



Photo 19



Photo 20



Photo 21

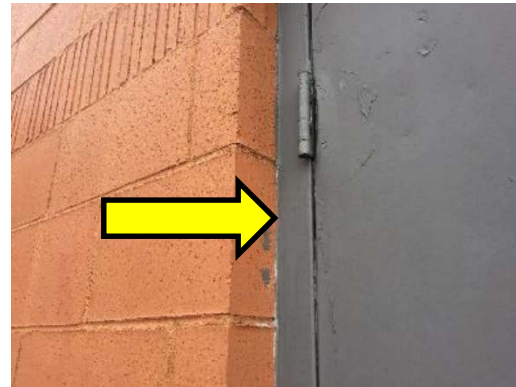


Photo 22



Photo 23

3.1.9 Other Building Materials

Bakelite is present on window sills within 1974 (Location 4) and does not contain asbestos (samples S0016A-C, photo 1).

Mortar present in the concrete block masonry brick does not contain asbestos (samples S0032A-G, photo 2).

Cream paint present on the masonry block walls does not contain asbestos (Location 5, samples S0031A-C, photo 3).

Cream paint present on the masonry block walls does not contain asbestos (Location 4, samples S0033A-C, photo 4).

White paint present on the masonry block walls does not contain asbestos (Location 1, samples S0034A-C, photo 5).

Beige paint present on the plaster walls does not contain asbestos (Location 3, samples S0035A-C, photo 6).

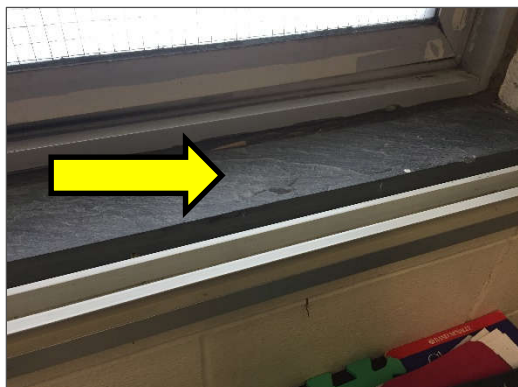


Photo 1

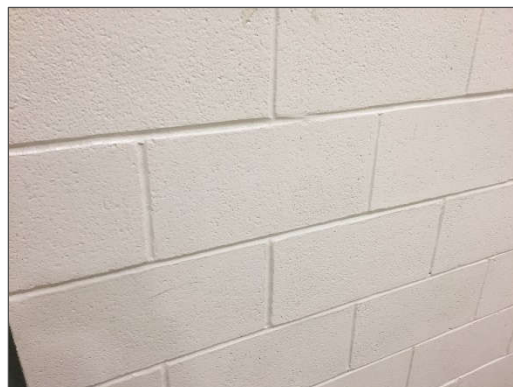


Photo 2

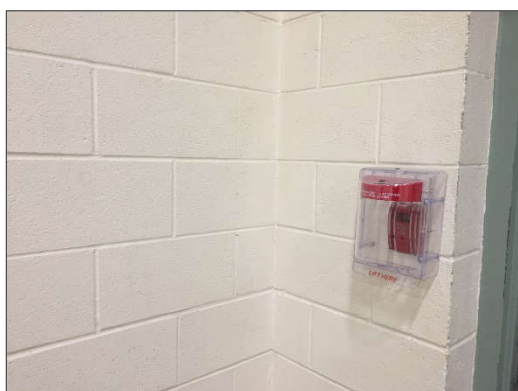


Photo 3

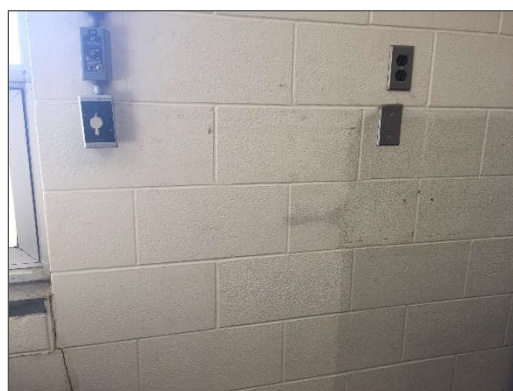


Photo 4

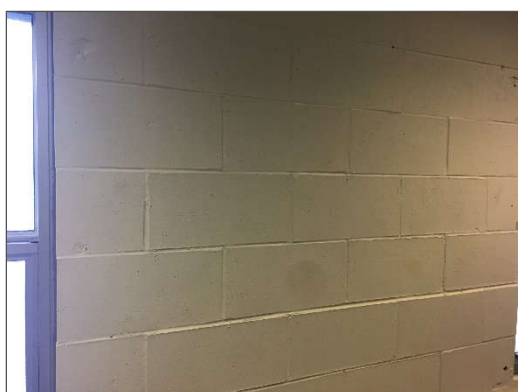


Photo 5



Photo 6

3.1.10 Presumed Asbestos Materials

The following is a list of materials which may contain asbestos, which were not observed and/or not sampled during the assessment; these materials are presumed to contain asbestos until otherwise proven by sampling and analysis:

- Roofing felts and tar, mastics
- Floor levelling compound
- Ceramic tile setting compound
- Electrical components
- Mechanical packing, ropes and gaskets
- Vermiculite
- Fibre-reinforced paints and coatings
- Paper products
- Fire resistant doors
- Metal clad finishes
- Stucco, plaster or other cementitious parge coatings

3.2 Lead

3.2.1 Paints and Surface Coatings

The following table summarizes the analytical results for paints sampled

Sample Number and Photo #	Colour, Substrate Description	Location (Location #)	Lead (%)
L0001, photo 1	White on masonry walls	1971 (Location 1)	<0.0063
L0002, photo 2	White on masonry walls	2011 (Location 2)	<0.0070
L0003, photo 3	White on masonry walls	1951 (Location 3)	<0.0063
L0004, photo 4	Grey on plaster walls	1951 (Location 3)	0.17
L0005, photo 5	White on masonry walls	1974 (Location 4)	0.029
L0006, photo 6	White on masonry walls	1982 (Location 5)	0.0064
NA	All Paint not sampled	Throughout	Presumed >0.1

All paints determined to be lead-based were found to be in good condition and not flaking, peeling or delaminating.

Results below 0.009% are considered non-lead-containing paints or surface coatings in accordance with Surface Coating Materials Regulation.

Results above 0.1% are considered elevated (i.e., greater than the EACO guideline of 0.1%). All paints determined to be elevated were found to be in good condition and not flaking, peeling or delaminating.

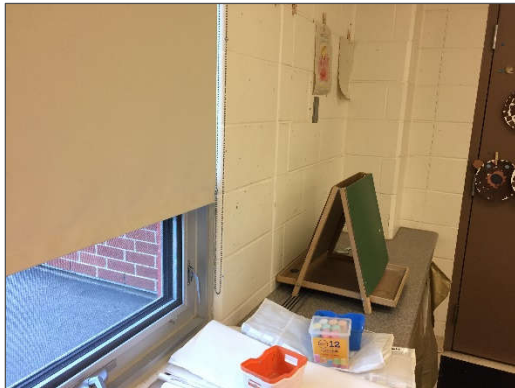


Photo 1

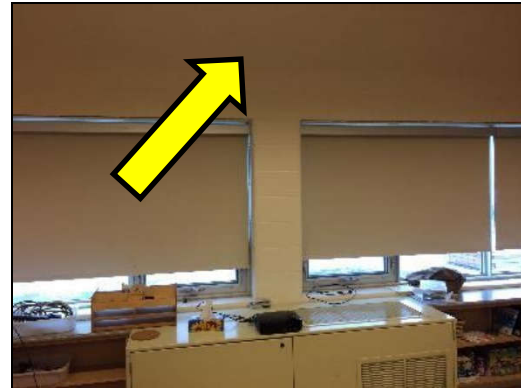


Photo 2

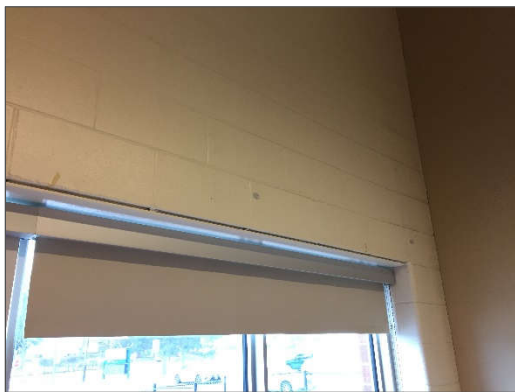


Photo 3



Photo 4

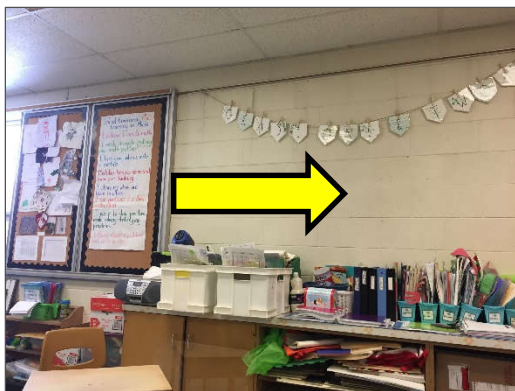


Photo 5



Photo 6

3.2.2 Lead Products and Applications

Lead-containing batteries are present in emergency lighting.



Photo 1

3.2.3 *Presumed Lead Materials*

Lead may be present in a number of materials which were not assessed and/or sampled. The following materials, where found, should be considered to contain lead.

- Electrical components, including wiring connectors, grounding conductors, and solder
- Solder on pipe connections

3.3 **Silica**

Crystalline silica is a presumed component of the following materials:

- Poured or pre-cast concrete
- Masonry and mortar
- Plaster

3.4 **Mercury**

3.4.1 *Lamps*

Mercury vapour is present in fluorescent lamps and other lighting that is known to contain mercury such as mercury vapour lamps.

3.5 **Polychlorinated Biphenyls**

3.5.1 *Caulking*

The following table presents a summary of caulking present:

Material, Colour and Photo #	Location	Sample Number	PCB concentration (ppm)
Caulking, grey, photo 1	Around exterior doors (Location 3)	P001	<0.2
Caulking, grey, photo 2	Around exterior doors (Location 5)	P002	<0.2
Caulking, grey, photo 3	Around exterior windows (Location 1)	P003	<0.2
Caulking, grey, photo 4	Around exterior windows (Location 4)	P004	6
Caulking, grey, photo 5	Around exterior doors (Location 1)	P005	<0.2
Caulking, white, photo 6	Around exterior door	P006	<0.2
Caulking, white, photo 7	Around exterior windows	P007	<0.2

Caulking highlighted in the table above is not considered a PCB solid based on the threshold (50 ppm).



Photo 1



Photo 2



Photo 3



Photo 4

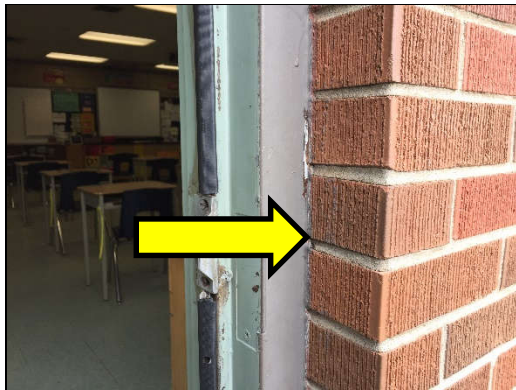


Photo 5

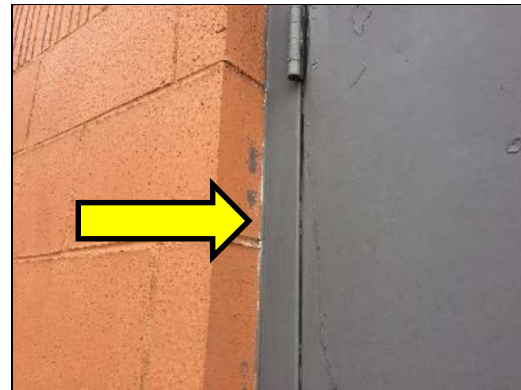


Photo 6

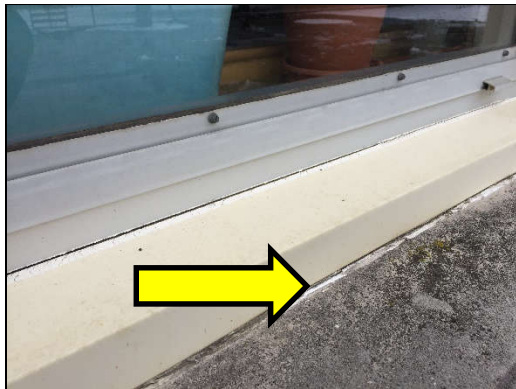


Photo 7

3.5.2 Lighting Ballasts

Due to the age of the building, PCBs may be present in light ballasts.

Based on date of construction (2012) and confirmed by visual observations of the addition (evidence of T-5 or T-8 fixtures with magnetic ballasts) the building will not contain PCB ballasts.

3.6 Mould

Visible mould growth and water damage was not found during the assessment.

4.0 RECOMMENDATIONS

4.1 General

1. Prepare plans and performance specifications for hazardous material removal required for the planned work. The specifications should include the scope of work, safe work practices, personal protective equipment, respiratory protection, and disposal of waste materials.



2. If suspected hazardous building materials are discovered during the planned work, which are not identified in this report, do not disturb and arrange for further testing and evaluation.
3. Conduct further investigation of the following items, which could not be completed during this assessment due to limitations on scope, occupancy, or being in service at the time of the assessment.
 - a. Any materials listed as exclusions in this report, prior to disturbance.
4. Provide this report and the detailed plans and specifications to the contractor prior to bidding or commencing work.
5. Retain a qualified consultant to specify, inspect and verify the successful removal of hazardous materials.
6. Update the asbestos inventory upon completion of the abatement and removal of asbestos-containing materials.

4.2 Building Demolition or Renovation Work

The following recommendations are made regarding renovation involving the hazardous materials identified.

4.2.1 Asbestos

Remove asbestos-containing materials (ACM) prior to renovation, alteration, or maintenance if ACM may be disturbed by the work.

If the identified ACM will not be removed prior to commencement of the work, any potential disturbance of ACM must follow asbestos precautions appropriate for the type of work being performed.

Asbestos-containing materials must be disposed of at a landfill approved to accept asbestos waste.

4.2.2 Lead

For paints identified as having elevated levels of lead (i.e., greater than the EACO guideline of 0.1% for lead-containing paints), construction disturbance may result in over-exposure to lead dust or fumes. The need for work procedures, engineering controls and personal protective equipment should be assessed on a site-specific basis to comply with provincial standards or guidelines.

For paints identified as having low levels of lead (i.e., less than the EACO guideline of 0.1% for lead-containing paints but above 0.009%). Special precautions are not recommended unless aggressive disturbance (grinding, blasting, torching) is planned.

Lead-containing items lead acid batteries should be recycled when taken out of service.



4.2.3 Silica

Construction disturbance of silica-containing products may result in excessive exposures to airborne silica, especially if performed indoors and dry. Cutting, grinding, drilling or demolition of materials containing silica should be completed only with proper respiratory protection and other worker safety precautions that comply with provincial standards or guidelines.

4.2.4 Mercury

Do not break lamps or separate liquid mercury from components. Recycle and reclaim mercury from fluorescent lamps when taken out of service. Mercury is classified as a hazardous waste and must be disposed of in accordance with local regulations.

4.2.5 PCBs

When light fixtures are removed, examine light ballasts for PCB content. If ballasts are not clearly labelled as "non-PCB", or are suspected to contain PCBs; package and ship ballasts for destruction at a federally permitted facility.

Remove PCB caulking prior to building demolition or if affected by the renovation work. PCB caulking is a hazardous waste; package and ship for destruction at a federally permitted facility.

4.2.6 Mould

No mould was observed; if mould is uncovered inside wall cavities during hand demolition, use appropriate precautions and protect workers using methods that comply with provincial guidelines.

5.0 TERMS AND LIMITATIONS

This work was performed subject to the Terms and Limitations presented or referenced in the proposal for this project.

Information provided by Pinchin is intended for Client use only. Pinchin will not provide results or information to any party unless disclosure by Pinchin is required by law. Any use by a third party of reports or documents authored by Pinchin or any reliance by a third party on or decisions made by a third party based on the findings described in said documents, is the sole responsibility of such third parties. Pinchin accepts no responsibility for damages suffered by any third party as a result of decisions made or actions conducted. No other warranties are implied or expressed.



6.0 REFERENCES

The following legislation and documents were referenced in completing the assessment and this report:

1. Asbestos on Construction Projects and in Buildings and Repair Operations, Ontario Regulation 278/05.
2. Designated Substances, Ontario Regulation 490/09.
3. Lead on Construction Projects, Ministry of Labour Guidance Document.
4. The Environmental Abatement Council of Ontario (EACO) Lead Guideline for Construction, Renovation, Maintenance or Repair.
5. Ministry of the Environment Regulation, R.R.O. 1990 Reg. 347 as amended.
6. Silica on Construction Projects, Ministry of Labour Guidance Document.
7. Alert – Mould in Workplace Buildings, Ontario Ministry of Labour.

\\pinchin.com\ham\Job\269000s\0269536.000 HAMILTON-WENT,Various2020Pr,ASB,CONS\0269536.024
HWDSB,LakeAveES,WindowDoorRep,HAZ,ASSMT\Deliverables\Report\269536.024 HazMat Report Lake Ave ES HWDSB Feb 10 2021.docx

Template: Master Report for Hazardous Materials Assessment (Pre-Construction), HAZ, February 26, 2020

APPENDIX I
Drawings



LEGEND

- (X) PINCHIN LOCATION NUMBER
- SURVEY BOUNDARY/ASSESSED AREA
- ⊙ ASBESTOS BULK SAMPLE
- ▲ LEAD BULK SAMPLE
- PCB BULK SAMPLE
- ✕ INTRUSIVE INSPECTION
- ASBESTOS-CONTAINING MATERIALS:
- CAULKING AND BUTYL TAPE
- [P] PIPE INSULATION

FOR CLARITY, THE FOLLOWING ASBESTOS-CONTAINING MATERIALS, ARE PRESENT IN THE ASSESSED AREA, BUT HAVE NOT BEEN HATCHED ON THE DRAWING:

- VINYL FLOOR TILES AND MASTIC

NOT ALL KNOWN OR SUSPECTED HAZARDOUS BUILDING MATERIALS MAY BE DEPICTED ON THE DRAWING. REFER TO THE HAZARDOUS BUILDING MATERIALS ASSESSMENT REPORT FOR A COMPLETE LIST OF KNOWN AND SUSPECTED HAZARDOUS BUILDING MATERIALS.

LEGEND IS COLOUR DEPENDENT. NON-COLOUR COPIES MAY ALTER INTERPRETATION.

BASE PLAN PROVIDED BY CLIENT.



PROJECT NAME:
HAZARDOUS BUILDING MATERIALS ASSESSMENT

CLIENT NAME:
HAMILTON WENTWORTH DISTRICT SCHOOL BOARD

PROJECT LOCATION:
**LAKE AVENUE ELEMENTARY SCHOOL
157 LAKE AVENUE NORTH
HAMILTON, ONTARIO**

FIGURE NAME:
WINDOW/DOOR REPLACEMENT PROJECT FLOOR PLAN

PROJECT NUMBER:
269536.024

SCALE:
NOT TO SCALE

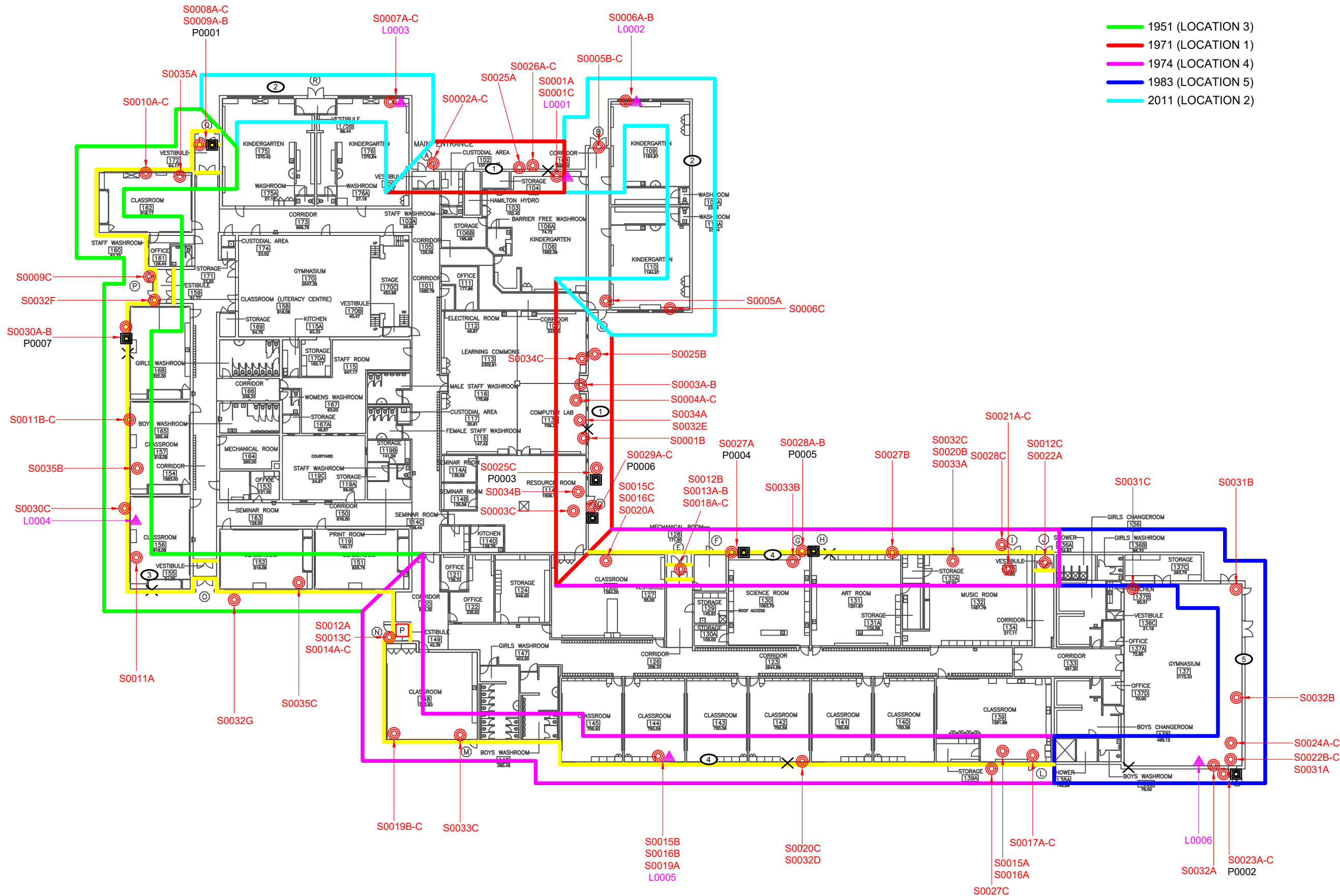
DRAWN BY:
EDP

REVIEWED BY:
SGH

DATE:
FEBRUARY 2021

FIGURE NUMBER:
1 OF 1

- 1951 (LOCATION 3)
- 1971 (LOCATION 1)
- 1974 (LOCATION 4)
- 1983 (LOCATION 5)
- 2011 (LOCATION 2)



APPENDIX II-A
Asbestos Analytical Certificates



Bulk Asbestos Analysis

By Polarized Light Microscopy
EPA Method: 600/R-93/116 and 40 CFR, Part 763, Subpart E,
App.E



Customer: Pinchin Ltd.
6-875 Main St West
Suite 200
Hamilton, Ontario L8S 4P9

Attn: Stephen Holmquist
Jessica Cozzitorto

Lab Order ID: 71958506
Analysis ID: 71958506_PLM
Date Received: 1/25/2021
Date Reported: 1/29/2021

Project: Lake Avenue School - HazMat Window Project

Sample ID	Description	Asbestos	Fibrous Components	Non-Fibrous Components	Attributes
Lab Sample ID	Lab Notes				Treatment
S0001A	Caulking, Grey Caulking Around Interior Windows, Loc: 1, 1971	None Detected		100% Other	Gray Non Fibrous Homogeneous
71958506PLM_1					Ashed
S0001B	Caulking, Grey Caulking Around Interior Windows, Loc: 1, 1971	None Detected		100% Other	Gray Non Fibrous Homogeneous
71958506PLM_2					Ashed
S0001C	Caulking, Grey Caulking Around Interior Windows, Loc: 1, 1971	None Detected		100% Other	Gray Non Fibrous Homogeneous
71958506PLM_3					Ashed
S0002A - A	Floor, Vinyl Floor Tile And Mastic, 12x12 Green With Dark Green Fleck, Loc: 1, 1971	None Detected		100% Other	Green Non Fibrous Homogeneous
71958506PLM_4	tile				Dissolved
S0002A - B	Floor, Vinyl Floor Tile And Mastic, 12x12 Green With Dark Green Fleck, Loc: 1, 1971	None Detected		100% Other	Yellow, Black Non Fibrous Heterogeneous
71958506PLM_91	mixed mastic				Dissolved
S0002B - A	Floor, Vinyl Floor Tile And Mastic, 12x12 Green With Dark Green Fleck, Loc: 1, 1971	None Detected		100% Other	Green Non Fibrous Homogeneous
71958506PLM_5	tile				Dissolved
S0002B - B	Floor, Vinyl Floor Tile And Mastic, 12x12 Green With Dark Green Fleck, Loc: 1, 1971	None Detected		100% Other	Yellow, Black Non Fibrous Heterogeneous
71958506PLM_92	mixed mastic				Dissolved
S0002C - A	Floor, Vinyl Floor Tile And Mastic, 12x12 Green With Dark Green Fleck, Loc: 1, 1971	None Detected		100% Other	Green Non Fibrous Homogeneous
71958506PLM_6	tile-ashed				Ashed

Disclaimer: Due to the nature of the EPA 600 method, asbestos may not be detected in samples containing low levels of asbestos. We strongly recommend that analysis of floor tiles, vermiculite, and/or heterogeneous soil samples be conducted by TEM for confirmation of "None Detected" by PLM. This report relates only to the samples tested and may not be reproduced, except in full, without the written approval of SAI. This report may not be used by the client to claim product endorsement by NVLAP or any other agency of the U.S. government. Analytical uncertainty available upon request. Scientific Analytical Institute participates in the NVLAP Proficiency Testing program. Unless otherwise noted blank sample correction was not performed. Estimated MDL is 0.1%.

Yanelis Delgado (54)

Jalen Moore (54)

Analyst

Approved Signatory



Bulk Asbestos Analysis

By Polarized Light Microscopy
EPA Method: 600/R-93/116 and 40 CFR, Part 763, Subpart E,
App.E



Customer: Pinchin Ltd.
6-875 Main St West
Suite 200
Hamilton, Ontario L8S 4P9

Attn: Stephen Holmquist
Jessica Cozzitorto

Lab Order ID: 71958506
Analysis ID: 71958506_PLM
Date Received: 1/25/2021
Date Reported: 1/29/2021

Project: Lake Avenue School - HazMat Window Project

Sample ID	Description	Asbestos	Fibrous Components	Non-Fibrous Components	Attributes
Lab Sample ID	Lab Notes				Treatment
S0002C - B	Floor,Vinyl Floor Tile And Mastic,12x12 Green With Dark Green Fleck,Loc:1,1971	None Detected		100% Other	Yellow, Black Non Fibrous Heterogeneous
71958506PLM_93	mixed mastic				Dissolved
S0003A	Caulking,Grey Caulking Around Exterior Door,Loc:1,1971	None Detected		100% Other	Gray Non Fibrous Homogeneous
71958506PLM_7					Ashed
S0003B	Caulking,Grey Caulking Around Exterior Door,Loc:1,1971	None Detected		100% Other	Gray Non Fibrous Homogeneous
71958506PLM_8					Ashed
S0003C	Caulking,Grey Caulking Around Exterior Door,Loc:1,1971	None Detected		100% Other	Gray Non Fibrous Homogeneous
71958506PLM_9					Ashed
S0004A - A	Floor,Vinyl Floor Tile And Mastic,12x12 Grey With Grey Fleck,Loc:1,1971	None Detected		100% Other	Gray Non Fibrous Homogeneous
71958506PLM_10	tile				Dissolved
S0004A - B	Floor,Vinyl Floor Tile And Mastic,12x12 Grey With Grey Fleck,Loc:1,1971	None Detected		100% Other	Black Non Fibrous Homogeneous
71958506PLM_94	mastic				Dissolved
S0004B - A	Floor,Vinyl Floor Tile And Mastic,12x12 Grey With Grey Fleck,Loc:1,1971	None Detected		100% Other	Gray Non Fibrous Homogeneous
71958506PLM_11	tile				Dissolved
S0004B - B	Floor,Vinyl Floor Tile And Mastic,12x12 Grey With Grey Fleck,Loc:1,1971	None Detected		100% Other	Black Non Fibrous Homogeneous
71958506PLM_95	mastic				Dissolved

Disclaimer: Due to the nature of the EPA 600 method, asbestos may not be detected in samples containing low levels of asbestos. We strongly recommend that analysis of floor tiles, vermiculite, and/or heterogeneous soil samples be conducted by TEM for confirmation of "None Detected" by PLM. This report relates only to the samples tested and may not be reproduced, except in full, without the written approval of SAI. This report may not be used by the client to claim product endorsement by NVLAP or any other agency of the U.S. government. Analytical uncertainty available upon request. Scientific Analytical Institute participates in the NVLAP Proficiency Testing program. Unless otherwise noted blank sample correction was not performed. Estimated MDL is 0.1%.

Yanelis Delgado (54)
Jalen Moore (54)

Analyst

Approved Signatory



Bulk Asbestos Analysis

By Polarized Light Microscopy
EPA Method: 600/R-93/116 and 40 CFR, Part 763, Subpart E,
App.E



Customer: Pinchin Ltd.
6-875 Main St West
Suite 200
Hamilton, Ontario L8S 4P9

Attn: Stephen Holmquist
Jessica Cozzitorto

Lab Order ID: 71958506
Analysis ID: 71958506_PLM
Date Received: 1/25/2021
Date Reported: 1/29/2021

Project: Lake Avenue School - HazMat Window Project

Sample ID	Description	Asbestos	Fibrous Components	Non-Fibrous Components	Attributes
Lab Sample ID	Lab Notes				Treatment
S0004C - A	Floor, Vinyl Floor Tile And Mastic, 12x12 Grey With Grey Fleck, Loc:1,1971	None Detected		100% Other	Gray Non Fibrous Homogeneous
71958506PLM_12	tile-ashed				Ashed
S0004C - B	Floor, Vinyl Floor Tile And Mastic, 12x12 Grey With Grey Fleck, Loc:1,1971	None Detected		100% Other	Black Non Fibrous Homogeneous
71958506PLM_96	mastic				Dissolved
S0005A	Caulking, White Caulking Around Exterior Doors, Loc:2,2011	None Detected		100% Other	White Non Fibrous Homogeneous
71958506PLM_13					Ashed
S0005B	Caulking, White Caulking Around Exterior Doors, Loc:2,2011	None Detected		100% Other	White Non Fibrous Homogeneous
71958506PLM_14					Ashed
S0005C	Caulking, White Caulking Around Exterior Doors, Loc:2,2011	None Detected		100% Other	White Non Fibrous Homogeneous
71958506PLM_15					Ashed
S0006A	Caulking, Get Caulking Around Windows, Loc:2,2011	None Detected		100% Other	Grayish Non Fibrous Homogeneous
71958506PLM_16					Ashed
S0006B	Caulking, Get Caulking Around Windows, Loc:2,2011	None Detected		100% Other	Grayish Non Fibrous Homogeneous
71958506PLM_17					Ashed
S0006C	Caulking, Get Caulking Around Windows, Loc:2,2011	None Detected		100% Other	Grayish Non Fibrous Homogeneous
71958506PLM_18					Ashed

Disclaimer: Due to the nature of the EPA 600 method, asbestos may not be detected in samples containing low levels of asbestos. We strongly recommend that analysis of floor tiles, vermiculite, and/or heterogeneous soil samples be conducted by TEM for confirmation of "None Detected" by PLM. This report relates only to the samples tested and may not be reproduced, except in full, without the approval of SAI. This report may not be used by the client to claim product endorsement by NVLAP or any other agency of the U.S. government. Analytical uncertainty available upon request. Scientific Analytical Institute participates in the NVLAP Proficiency Testing program. Unless otherwise noted blank sample correction was not performed. Estimated MDL is 0.1%.

Yanelis Delgado (54)
Jalen Moore (54)

Analyst

Approved Signatory



Bulk Asbestos Analysis

By Polarized Light Microscopy
EPA Method: 600/R-93/116 and 40 CFR, Part 763, Subpart E,
App.E



Customer: Pinchin Ltd.
6-875 Main St West
Suite 200
Hamilton, Ontario L8S 4P9

Attn: Stephen Holmquist
Jessica Cozzitorto

Lab Order ID: 71958506
Analysis ID: 71958506_PLM
Date Received: 1/25/2021
Date Reported: 1/29/2021

Project: Lake Avenue School - HazMat Window Project

Sample ID	Description	Asbestos	Fibrous Components	Non-Fibrous Components	Attributes
Lab Sample ID	Lab Notes				Treatment
S0007A	Caulking,Grey Caulking Around Exterior Windows,Loc:3,1951	None Detected		100% Other	Gray Non Fibrous Homogeneous
71958506PLM_19					Ashed
S0007B	Caulking,Grey Caulking Around Exterior Windows,Loc:3,1951	None Detected		100% Other	Gray Non Fibrous Homogeneous
71958506PLM_20					Ashed
S0007C	Caulking,Grey Caulking Around Exterior Windows,Loc:3,1951	None Detected		100% Other	Gray Non Fibrous Homogeneous
71958506PLM_21					Ashed
S0008A	Caulking,Black Butyl Tape On Door,Loc:3,1951	None Detected		100% Other	Gray Non Fibrous Homogeneous
71958506PLM_22					Ashed
S0008B	Caulking,Black Butyl Tape On Door,Loc:3,1951	None Detected		100% Other	Gray Non Fibrous Homogeneous
71958506PLM_23					Ashed
S0008C	Caulking,Black Butyl Tape On Door,Loc:3,1951	None Detected		100% Other	Gray Non Fibrous Homogeneous
71958506PLM_24					Ashed
S0009A	Caulking,Grey Caulking Around Exterior Door,Loc:3,1951	8% Chrysotile		92% Other	Gray Non Fibrous Homogeneous
71958506PLM_25					Ashed
S0009B	Caulking,Grey Caulking Around Exterior Door,Loc:3,1951	Not Analyzed			
71958506PLM_26					

Disclaimer: Due to the nature of the EPA 600 method, asbestos may not be detected in samples containing low levels of asbestos. We strongly recommend that analysis of floor tiles, vermiculite, and/or heterogeneous soil samples be conducted by TEM for confirmation of "None Detected" by PLM. This report relates only to the samples tested and may not be reproduced, except in full, without the scientific approval of SAL. This report may not be used by the client to claim product endorsement by NVLAP or any other agency of the U.S. government. Analytical uncertainty available upon request. Scientific Analytical Institute participates in the NVLAP Proficiency Testing program. Unless otherwise noted blank sample correction was not performed. Estimated MDL is 0.1%.

Yanelis Delgado (54)

Jalen Moore (54)

Analyst

Approved Signatory



Bulk Asbestos Analysis

By Polarized Light Microscopy
EPA Method: 600/R-93/116 and 40 CFR, Part 763, Subpart E,
App.E



Customer: Pinchin Ltd.
6-875 Main St West
Suite 200
Hamilton, Ontario L8S 4P9

Attn: Stephen Holmquist
Jessica Cozzitorto

Lab Order ID: 71958506
Analysis ID: 71958506_PLM
Date Received: 1/25/2021
Date Reported: 1/29/2021

Project: Lake Avenue School - HazMat Window Project

Sample ID	Description	Asbestos	Fibrous Components	Non-Fibrous Components	Attributes
Lab Sample ID	Lab Notes				Treatment
S0009C	Caulking, Grey Caulking Around Exterior Door, Loc: 3, 1951	Not Analyzed			
71958506PLM_27					
S0010A	Caulking, Grey Butyl Tape, Loc: 3, 1951	5% Chrysotile		95% Other	Gray Non Fibrous Homogeneous
71958506PLM_28					Ashed
S0010B	Caulking, Grey Butyl Tape, Loc: 3, 1951	Not Analyzed			
71958506PLM_29					
S0010C	Caulking, Grey Butyl Tape, Loc: 3, 1951	Not Analyzed			
71958506PLM_30					
S0011A	Caulking, Black Butyl Tape In Windows, Loc: 3, 1951	8% Chrysotile		92% Other	Black Non Fibrous Homogeneous
71958506PLM_31					Ashed
S0011B	Caulking, Black Butyl Tape In Windows, Loc: 3, 1951	Not Analyzed			
71958506PLM_32					
S0011C	Caulking, Black Butyl Tape In Windows, Loc: 3, 1951	Not Analyzed			
71958506PLM_33					
S0012A - A	Floor, Vinyl Floor Tile And Mastic, 12x12 Green With White Fleck, Loc: 4, 1974	None Detected		100% Other	Green Non Fibrous Homogeneous
71958506PLM_34	tile				Dissolved

Disclaimer: Due to the nature of the EPA 600 method, asbestos may not be detected in samples containing low levels of asbestos. We strongly recommend that analysis of floor tiles, vermiculite, and/or heterogeneous soil samples be conducted by TEM for confirmation of "None Detected" by PLM. This report relates only to the samples tested and may not be reproduced, except in full, without the written approval of SAI. This report may not be used by the client to claim product endorsement by NVLAP or any other agency of the U.S. government. Analytical uncertainty available upon request. Scientific Analytical Institute participates in the NVLAP Proficiency Testing program. Unless otherwise noted blank sample correction was not performed. Estimated MDL is 0.1%.

Yanelis Delgado (54)

Jalen Moore (54)

Analyst

Approved Signatory



Bulk Asbestos Analysis

By Polarized Light Microscopy
EPA Method: 600/R-93/116 and 40 CFR, Part 763, Subpart E,
App.E



Customer: Pinchin Ltd.
6-875 Main St West
Suite 200
Hamilton, Ontario L8S 4P9

Attn: Stephen Holmquist
Jessica Cozzitorto

Lab Order ID: 71958506
Analysis ID: 71958506_PLM
Date Received: 1/25/2021
Date Reported: 1/29/2021

Project: Lake Avenue School - HazMat Window Project

Sample ID	Description	Asbestos	Fibrous Components	Non-Fibrous Components	Attributes
Lab Sample ID	Lab Notes				Treatment
S0012A - B	Floor, Vinyl Floor Tile And Mastic, 12x12 Green With White Fleck, Loc:4,1974	None Detected		100% Other	Black Non Fibrous Homogeneous
71958506PLM_97	mastic				Dissolved
S0012B - A	Floor, Vinyl Floor Tile And Mastic, 12x12 Green With White Fleck, Loc:4,1974	None Detected		100% Other	Green Non Fibrous Homogeneous
71958506PLM_35	tile				Dissolved
S0012B - B	Floor, Vinyl Floor Tile And Mastic, 12x12 Green With White Fleck, Loc:4,1974	None Detected		100% Other	Black Non Fibrous Homogeneous
71958506PLM_98	mastic				Dissolved
S0012C - A	Floor, Vinyl Floor Tile And Mastic, 12x12 Green With White Lines, Loc:5,1982	None Detected		100% Other	Green Non Fibrous Homogeneous
71958506PLM_36	tile-ashed				Ashed
S0012C - B	Floor, Vinyl Floor Tile And Mastic, 12x12 Green With White Lines, Loc:5,1982	None Detected		100% Other	Black Non Fibrous Homogeneous
71958506PLM_99	mastic				Dissolved
S0013A	Caulking, Brown Caulking Around Exterior Door, Loc:4,1974	None Detected		100% Other	Brown Non Fibrous Homogeneous
71958506PLM_37					Ashed
S0013B	Caulking, Brown Caulking Around Exterior Door, Loc:4,1974	None Detected		100% Other	Brown Non Fibrous Homogeneous
71958506PLM_38					Ashed
S0013C	Caulking, Brown Caulking Around Exterior Door, Loc:4,1974	None Detected		100% Other	Brown Non Fibrous Homogeneous
71958506PLM_39					Ashed

Disclaimer: Due to the nature of the EPA 600 method, asbestos may not be detected in samples containing low levels of asbestos. We strongly recommend that analysis of floor tiles, vermiculite, and/or heterogeneous soil samples be conducted by TEM for confirmation of "None Detected" by PLM. This report relates only to the samples tested and may not be reproduced, except in full, without the written approval of SAI. This report may not be used by the client to claim product endorsement by NVLAP or any other agency of the U.S. government. Analytical uncertainty available upon request. Scientific Analytical Institute participates in the NVLAP Proficiency Testing program. Unless otherwise noted blank sample correction was not performed. Estimated MDL is 0.1%.

Yanelis Delgado (54)

Jalen Moore (54)

Analyst

Approved Signatory



Bulk Asbestos Analysis

By Polarized Light Microscopy
EPA Method: 600/R-93/116 and 40 CFR, Part 763, Subpart E,
App.E



Customer: Pinchin Ltd.
6-875 Main St West
Suite 200
Hamilton, Ontario L8S 4P9

Attn: Stephen Holmquist
Jessica Cozzitorto

Lab Order ID: 71958506
Analysis ID: 71958506_PLM
Date Received: 1/25/2021
Date Reported: 1/29/2021

Project: Lake Avenue School - HazMat Window Project

Sample ID	Description	Asbestos	Fibrous Components	Non-Fibrous Components	Attributes
Lab Sample ID	Lab Notes				Treatment
S0014A	Caulking, Black Butyl Tape On Exterior Doors, Loc:4, 1974	None Detected		100% Other	Gray Non Fibrous Heterogeneous
71958506PLM_40					Ashed
S0014B	Caulking, Black Butyl Tape On Exterior Doors, Loc:4, 1974	None Detected		100% Other	Gray Non Fibrous Heterogeneous
71958506PLM_41					Ashed
S0014C	Caulking, Black Butyl Tape On Exterior Doors, Loc:4, 1974	Not Submitted			
71958506PLM_42	no sample in bag				
S0015A	Caulking, Grey Caulking Around Exterior Windows, Loc:4, 1974	3% Chrysotile		97% Other	Tan Non Fibrous Homogeneous
71958506PLM_43					Ashed
S0015B	Caulking, Grey Caulking Around Exterior Windows, Loc:4, 1974	Not Analyzed			
71958506PLM_44					
S0015C	Caulking, Grey Caulking Around Exterior Windows, Loc:4, 1974	Not Analyzed			
71958506PLM_45					
S0016A	Cement Product, Window Sill, Loc:4, 1974	None Detected		100% Other	Black Non Fibrous Heterogeneous
71958506PLM_46					Crushed
S0016B	Cement Product, Window Sill, Loc:4, 1974	None Detected		100% Other	Black Non Fibrous Heterogeneous
71958506PLM_47					Crushed

Disclaimer: Due to the nature of the EPA 600 method, asbestos may not be detected in samples containing low levels of asbestos. We strongly recommend that analysis of floor tiles, vermiculite, and/or heterogeneous soil samples be conducted by TEM for confirmation of "None Detected" by PLM. This report relates only to the samples tested and may not be reproduced, except in full, without the written approval of SAI. This report may not be used by the client to claim product endorsement by NVLAP or any other agency of the U.S. government. Analytical uncertainty available upon request. Scientific Analytical Institute participates in the NVLAP Proficiency Testing program. Unless otherwise noted blank sample correction was not performed. Estimated MDL is 0.1%.

Yanelis Delgado (54)

Jalen Moore (54)

Analyst

Approved Signatory



Bulk Asbestos Analysis

By Polarized Light Microscopy
EPA Method: 600/R-93/116 and 40 CFR, Part 763, Subpart E,
App.E



Customer: Pinchin Ltd.
6-875 Main St West
Suite 200
Hamilton, Ontario L8S 4P9

Attn: Stephen Holmquist
Jessica Cozzitorto

Project: Lake Avenue School - HazMat Window Project

Lab Order ID: 71958506
Analysis ID: 71958506_PLM
Date Received: 1/25/2021
Date Reported: 1/29/2021

Sample ID	Description	Asbestos	Fibrous Components	Non-Fibrous Components	Attributes
Lab Sample ID	Lab Notes				Treatment
S0016C	Cement Product, Window Sill, Loc:4, 1974	None Detected		100% Other	Black Non Fibrous Heterogeneous
71958506PLM_48					Crushed
S0017A - A	Floor, Vinyl Floor Tile And Mastic, 12x12 Beige, Loc:4, 1974	None Detected		100% Other	Gray Non Fibrous Heterogeneous
71958506PLM_49	tile				Dissolved
S0017A - B	Floor, Vinyl Floor Tile And Mastic, 12x12 Beige, Loc:4, 1974	None Detected		100% Other	Black Non Fibrous Heterogeneous
71958506PLM_100	mastic				Dissolved
S0017B - A	Floor, Vinyl Floor Tile And Mastic, 12x12 Beige, Loc:4, 1974	None Detected		100% Other	Gray Non Fibrous Heterogeneous
71958506PLM_50	tile				Dissolved
S0017B - B	Floor, Vinyl Floor Tile And Mastic, 12x12 Beige, Loc:4, 1974	None Detected		100% Other	Black Non Fibrous Heterogeneous
71958506PLM_101	mastic				Dissolved
S0017C - A	Floor, Vinyl Floor Tile And Mastic, 12x12 Beige, Loc:4, 1974	None Detected		100% Other	Gray Non Fibrous Heterogeneous
71958506PLM_51	tile-ashed				Ashed
S0017C - B	Floor, Vinyl Floor Tile And Mastic, 12x12 Beige, Loc:4, 1974	None Detected		100% Other	Black Non Fibrous Heterogeneous
71958506PLM_102	mastic				Dissolved
S0018A	Caulking, Grey Butyl Tape On Exterior Door, Loc:4, 1974	2% Chrysotile		98% Other	Gray Non Fibrous Heterogeneous
71958506PLM_52					Dissolved

Disclaimer: Due to the nature of the EPA 600 method, asbestos may not be detected in samples containing low levels of asbestos. We strongly recommend that analysis of floor tiles, vermiculite, and/or heterogeneous soil samples be conducted by TEM for confirmation of "None Detected" by PLM. This report relates only to the samples tested and may not be reproduced, except in full, without the scientific approval of SAI. This report may not be used by the client to claim product endorsement by NVLAP or any other agency of the U.S. government. Analytical uncertainty available upon request. Scientific Analytical Institute participates in the NVLAP Proficiency Testing program. Unless otherwise noted blank sample correction was not performed. Estimated MDL is 0.1%.

Yanelis Delgado (54)

Jalen Moore (54)

Analyst

Approved Signatory



Bulk Asbestos Analysis

By Polarized Light Microscopy
EPA Method: 600/R-93/116 and 40 CFR, Part 763, Subpart E,
App.E



Customer: Pinchin Ltd.
6-875 Main St West
Suite 200
Hamilton, Ontario L8S 4P9

Attn: Stephen Holmquist
Jessica Cozzitorto

Project: Lake Avenue School - HazMat Window Project

Lab Order ID: 71958506
Analysis ID: 71958506_PLM
Date Received: 1/25/2021
Date Reported: 1/29/2021

Sample ID	Description	Asbestos	Fibrous Components	Non-Fibrous Components	Attributes
Lab Sample ID	Lab Notes				Treatment
S0018B	Caulking, Grey Butyl Tape On Exterior Door, Loc: 4, 1974	Not Analyzed			
71958506PLM_53					
S0018C	Caulking, Grey Butyl Tape On Exterior Door, Loc: 4, 1974	Not Analyzed			
71958506PLM_54					
S0019A	Caulking, Grey Butyl Tape On Exterior Windows, Loc: 4, 1974	None Detected		100% Other	Gray Non Fibrous Heterogeneous
71958506PLM_55					Dissolved
S0019B	Caulking, Grey Butyl Tape On Exterior Windows, Loc: 4, 1974	None Detected		100% Other	Gray Non Fibrous Heterogeneous
71958506PLM_56					Dissolved
S0019C	Caulking, Grey Butyl Tape On Exterior Windows, Loc: 4, 1974	None Detected		100% Other	Gray Non Fibrous Heterogeneous
71958506PLM_57					Dissolved
S0020A	Caulking, Black Butyl Tape On Exterior Windows, Loc: 4, 1974	None Detected		100% Other	Black Non Fibrous Heterogeneous
71958506PLM_58					Dissolved
S0020B	Caulking, Black Butyl Tape On Exterior Windows, Loc: 4, 1974	Not Submitted			
71958506PLM_59					
S0020C	Caulking, Black Butyl Tape On Exterior Windows, Loc: 4, 1974	Not Submitted			
71958506PLM_60					

Disclaimer: Due to the nature of the EPA 600 method, asbestos may not be detected in samples containing low levels of asbestos. We strongly recommend that analysis of floor tiles, vermiculite, and/or heterogeneous soil samples be conducted by TEM for confirmation of "None Detected" by PLM. This report relates only to the samples tested and may not be reproduced, except in full, without the written approval of SAI. This report may not be used by the client to claim product endorsement by NVLAP or any other agency of the U.S. government. Analytical uncertainty available upon request. Scientific Analytical Institute participates in the NVLAP Proficiency Testing program. Unless otherwise noted blank sample correction was not performed. Estimated MDL is 0.1%.

Yanelis Delgado (54)
Jalen Moore (54)

Analyst

Approved Signatory



Bulk Asbestos Analysis

By Polarized Light Microscopy
EPA Method: 600/R-93/116 and 40 CFR, Part 763, Subpart E,
App.E



Customer: Pinchin Ltd.
6-875 Main St West
Suite 200
Hamilton, Ontario L8S 4P9

Attn: Stephen Holmquist
Jessica Cozzitorto

Lab Order ID: 71958506
Analysis ID: 71958506_PLM
Date Received: 1/25/2021
Date Reported: 1/29/2021

Project: Lake Avenue School - HazMat Window Project

Sample ID	Description	Asbestos	Fibrous Components	Non-Fibrous Components	Attributes
Lab Sample ID	Lab Notes				Treatment
S0021A - A	Floor, Vinyl Floor Tile And Mastic, 12x12 Orange With White Lines, Loc:4,1974	None Detected		100% Other	Tan Non Fibrous Heterogeneous
71958506PLM_61	tile				Dissolved
S0021A - B	Floor, Vinyl Floor Tile And Mastic, 12x12 Orange With White Lines, Loc:4,1974	None Detected		100% Other	Black Non Fibrous Heterogeneous
71958506PLM_103	mastic				Dissolved
S0021B - A	Floor, Vinyl Floor Tile And Mastic, 12x12 Orange With White Lines, Loc:4,1974	None Detected		100% Other	Tan Non Fibrous Heterogeneous
71958506PLM_62	tile				Dissolved
S0021B - B	Floor, Vinyl Floor Tile And Mastic, 12x12 Orange With White Lines, Loc:4,1974	None Detected		100% Other	Black Non Fibrous Heterogeneous
71958506PLM_104	mastic				Dissolved
S0021C - A	Floor, Vinyl Floor Tile And Mastic, 12x12 Orange With White Lines, Loc:4,1974	None Detected		100% Other	Tan Non Fibrous Heterogeneous
71958506PLM_63	tile-ashed				Ashed
S0021C - B	Floor, Vinyl Floor Tile And Mastic, 12x12 Orange With White Lines, Loc:4,1974	None Detected		100% Other	Black Non Fibrous Heterogeneous
71958506PLM_105	mastic				Dissolved
S0022A	Caulking, Grey Caulking Around Exterior Door, Loc:5,1982	None Detected		100% Other	Gray Non Fibrous Heterogeneous
71958506PLM_64					Ashed
S0022B	Caulking, Grey Caulking Around Exterior Door, Loc:5,1982	None Detected		100% Other	Gray Non Fibrous Heterogeneous
71958506PLM_65					Ashed

Disclaimer: Due to the nature of the EPA 600 method, asbestos may not be detected in samples containing low levels of asbestos. We strongly recommend that analysis of floor tiles, vermiculite, and/or heterogeneous soil samples be conducted by TEM for confirmation of "None Detected" by PLM. This report relates only to the samples tested and may not be reproduced, except in full, without the written approval of SAI. This report may not be used by the client to claim product endorsement by NVLAP or any other agency of the U.S. government. Analytical uncertainty available upon request. Scientific Analytical Institute participates in the NVLAP Proficiency Testing program. Unless otherwise noted blank sample correction was not performed. Estimated MDL is 0.1%.

Yanelis Delgado (54)

Jalen Moore (54)

Analyst

Approved Signatory



Bulk Asbestos Analysis

By Polarized Light Microscopy
EPA Method: 600/R-93/116 and 40 CFR, Part 763, Subpart E,
App.E



Customer: Pinchin Ltd.
6-875 Main St West
Suite 200
Hamilton, Ontario L8S 4P9

Attn: Stephen Holmquist
Jessica Cozzitorto

Lab Order ID: 71958506
Analysis ID: 71958506_PLM
Date Received: 1/25/2021
Date Reported: 1/29/2021

Project: Lake Avenue School - HazMat Window Project

Sample ID	Description	Asbestos	Fibrous Components	Non-Fibrous Components	Attributes
Lab Sample ID	Lab Notes				Treatment
S0022C	Caulking, Grey Caulking Around Exterior Door, Loc: 5, 1982	None Detected		100% Other	Gray Non Fibrous Heterogeneous
71958506PLM_66					Ashed
S0023A	Caulking, Grey Caulking On Exterior Doors, Loc: 5, 1982	None Detected		100% Other	Gray Non Fibrous Heterogeneous
71958506PLM_67					Ashed
S0023B	Caulking, Grey Caulking On Exterior Doors, Loc: 5, 1982	None Detected		100% Other	Gray Non Fibrous Heterogeneous
71958506PLM_68					Ashed
S0023C	Caulking, Grey Caulking On Exterior Doors, Loc: 5, 1982	None Detected		100% Other	Gray Non Fibrous Heterogeneous
71958506PLM_69					Ashed
S0024A - A	Floor, Vinyl Floor Tile And Mastic, 12x12 Brown With White Lines, Loc: 5, 1982	2% Chrysotile		98% Other	Tan Non Fibrous Heterogeneous
71958506PLM_70	tile				Dissolved
S0024A - B	Floor, Vinyl Floor Tile And Mastic, 12x12 Brown With White Lines, Loc: 5, 1982	None Detected		100% Other	Black Non Fibrous Heterogeneous
71958506PLM_106	mastic				Dissolved
S0024B - A	Floor, Vinyl Floor Tile And Mastic, 12x12 Brown With White Lines, Loc: 5, 1982	Not Analyzed			
71958506PLM_71	tile				
S0024B - B	Floor, Vinyl Floor Tile And Mastic, 12x12 Brown With White Lines, Loc: 5, 1982	None Detected		100% Other	Black Non Fibrous Heterogeneous
71958506PLM_107	mastic				Dissolved

Disclaimer: Due to the nature of the EPA 600 method, asbestos may not be detected in samples containing low levels of asbestos. We strongly recommend that analysis of floor tiles, vermiculite, and/or heterogeneous soil samples be conducted by TEM for confirmation of "None Detected" by PLM. This report relates only to the samples tested and may not be reproduced, except in full, without the scientific approval of SAL. This report may not be used by the client to claim product endorsement by NVLAP or any other agency of the U.S. government. Analytical uncertainty available upon request. Scientific Analytical Institute participates in the NVLAP Proficiency Testing program. Unless otherwise noted blank sample correction was not performed. Estimated MDL is 0.1%.

Yanelis Delgado (54)

Jalen Moore (54)

Analyst

Approved Signatory



Bulk Asbestos Analysis

By Polarized Light Microscopy
EPA Method: 600/R-93/116 and 40 CFR, Part 763, Subpart E,
App.E



Customer: Pinchin Ltd.
6-875 Main St West
Suite 200
Hamilton, Ontario L8S 4P9

Attn: Stephen Holmquist
Jessica Cozzitorto

Lab Order ID: 71958506
Analysis ID: 71958506_PLM
Date Received: 1/25/2021
Date Reported: 1/29/2021

Project: Lake Avenue School - HazMat Window Project

Sample ID	Description	Asbestos	Fibrous Components	Non-Fibrous Components	Attributes
Lab Sample ID	Lab Notes				Treatment
S0024C - A	Floor, Vinyl Floor Tile And Mastic, 12x12 Brown With White Lines, Loc: 5, 1982	Not Analyzed			
71958506PLM_72	tile				
S0024C - B	Floor, Vinyl Floor Tile And Mastic, 12x12 Brown With White Lines, Loc: 5, 1982	None Detected		100% Other	Black Non Fibrous Heterogeneous
71958506PLM_108	mastic				Dissolved
S0025A	Caulking, Grey Caulking On Exterior Windows, Loc: 1, 1971	None Detected		100% Other	Gray Non Fibrous Heterogeneous
71958506PLM_73					Ashed
S0025B	Caulking, Grey Caulking On Exterior Windows, Loc: 1, 1971	None Detected		100% Other	Gray Non Fibrous Heterogeneous
71958506PLM_74					Ashed
S0025C	Caulking, Grey Caulking On Exterior Windows, Loc: 1, 1971	None Detected		100% Other	Gray Non Fibrous Heterogeneous
71958506PLM_75					Ashed
S0026A	Caulking, Black Butyl Tape, Loc: 1, 1971	None Detected		100% Other	Black Non Fibrous Heterogeneous
71958506PLM_76					Dissolved
S0026B	Caulking, Black Butyl Tape, Loc: 1, 1971	None Detected		100% Other	Black Non Fibrous Heterogeneous
71958506PLM_77					Ashed
S0026C	Caulking, Black Butyl Tape, Loc: 1, 1971	None Detected		100% Other	Black Non Fibrous Heterogeneous
71958506PLM_78					Ashed

Disclaimer: Due to the nature of the EPA 600 method, asbestos may not be detected in samples containing low levels of asbestos. We strongly recommend that analysis of floor tiles, vermiculite, and/or heterogeneous soil samples be conducted by TEM for confirmation of "None Detected" by PLM. This report relates only to the samples tested and may not be reproduced, except in full, without the written approval of SAL. This report may not be used by the client to claim product endorsement by NVLAP or any other agency of the U.S. government. Analytical uncertainty available upon request. Scientific Analytical Institute participates in the NVLAP Proficiency Testing program. Unless otherwise noted blank sample correction was not performed. Estimated MDL is 0.1%.

Yanelis Delgado (54)

Jalen Moore (54)

Analyst

Approved Signatory



Bulk Asbestos Analysis

By Polarized Light Microscopy
EPA Method: 600/R-93/116 and 40 CFR, Part 763, Subpart E,
App.E



Customer: Pinchin Ltd.
6-875 Main St West
Suite 200
Hamilton, Ontario L8S 4P9

Attn: Stephen Holmquist
Jessica Cozzitorto

Lab Order ID: 71958506
Analysis ID: 71958506_PLM
Date Received: 1/25/2021
Date Reported: 1/29/2021

Project: Lake Avenue School - HazMat Window Project

Sample ID	Description	Asbestos	Fibrous Components	Non-Fibrous Components	Attributes
Lab Sample ID	Lab Notes				Treatment
S0027A	Caulking,Grey Caulking Around Exterior Windows,Loc:4,1974	None Detected		100% Other	Gray Non Fibrous Heterogeneous
71958506PLM_79					Ashed
S0027B	Caulking,Grey Caulking Around Exterior Windows,Loc:4,1974	None Detected		100% Other	Gray Non Fibrous Heterogeneous
71958506PLM_80					Ashed
S0027C	Caulking,Grey Caulking Around Exterior Windows,Loc:4,1974	None Detected		100% Other	Gray Non Fibrous Heterogeneous
71958506PLM_81					Ashed
S0028A	Caulking,Grey Caulking Around Exterior,Loc:4,1974	None Detected		100% Other	Gray Non Fibrous Heterogeneous
71958506PLM_82					Ashed
S0028B	Caulking,Grey Caulking Around Exterior,Loc:4,1974	None Detected		100% Other	Gray Non Fibrous Heterogeneous
71958506PLM_83					Ashed
S0028C	Caulking,Grey Caulking Around Exterior,Loc:4,1974	None Detected		100% Other	Gray Non Fibrous Heterogeneous
71958506PLM_84					Ashed
S0029A	Caulking,Grey Caulking On Exterior Doors,Loc:1,1971	None Detected		100% Other	Gray Non Fibrous Heterogeneous
71958506PLM_85					Ashed
S0029B	Caulking,Grey Caulking On Exterior Doors,Loc:1,1971	None Detected		100% Other	Gray Non Fibrous Heterogeneous
71958506PLM_86					Ashed

Disclaimer: Due to the nature of the EPA 600 method, asbestos may not be detected in samples containing low levels of asbestos. We strongly recommend that analysis of floor tiles, vermiculite, and/or heterogeneous soil samples be conducted by TEM for confirmation of "None Detected" by PLM. This report relates only to the samples tested and may not be reproduced, except in full, without the written approval of SAL. This report may not be used by the client to claim product endorsement by NVLAP or any other agency of the U.S. government. Analytical uncertainty available upon request. Scientific Analytical Institute participates in the NVLAP Proficiency Testing program. Unless otherwise noted blank sample correction was not performed. Estimated MDL is 0.1%.

Yanelis Delgado (54)
Jalen Moore (54)

Analyst

Approved Signatory



Bulk Asbestos Analysis

By Polarized Light Microscopy
EPA Method: 600/R-93/116 and 40 CFR, Part 763, Subpart E,
App.E



Customer: Pinchin Ltd.
6-875 Main St West
Suite 200
Hamilton, Ontario L8S 4P9

Attn: Stephen Holmquist
Jessica Cozzitorto

Lab Order ID: 71958506
Analysis ID: 71958506_PLM
Date Received: 1/25/2021
Date Reported: 1/29/2021

Project: Lake Avenue School - HazMat Window Project

Sample ID	Description	Asbestos	Fibrous Components	Non-Fibrous Components	Attributes
Lab Sample ID	Lab Notes				Treatment
S0029C	Caulking, Grey Caulking On Exterior Doors, Loc: 1, 1971	None Detected		100% Other	Gray Non Fibrous Heterogeneous
71958506PLM_87					Ashed
S0030A	Caulking, White Caulking Around Exterior Windows, Loc: 3, 1951	3% Chrysotile		97% Other	Gray Non Fibrous Heterogeneous
71958506PLM_88					Ashed
S0030B	Caulking, White Caulking Around Exterior Windows, Loc: 3, 1951	Not Analyzed			
71958506PLM_89					
S0030C	Caulking, White Caulking Around Exterior Windows, Loc: 3, 1951	Not Analyzed			
71958506PLM_90					

Disclaimer: Due to the nature of the EPA 600 method, asbestos may not be detected in samples containing low levels of asbestos. We strongly recommend that analysis of floor tiles, vermiculite, and/or heterogeneous soil samples be conducted by TEM for confirmation of "None Detected" by PLM. This report relates only to the samples tested and may not be reproduced, except in full, without the written approval of SAI. This report may not be used by the client to claim product endorsement by NVLAP or any other agency of the U.S. government. Analytical uncertainty available upon request. Scientific Analytical Institute participates in the NVLAP Proficiency Testing program. Unless otherwise noted blank sample correction was not performed. Estimated MDL is 0.1%.

Yanelis Delgado (54)

Jalen Moore (54)

Analyst

Approved Signatory

11958506

Version 1-15-2012

Client: Pinchin Ltd.
Contact: Stephen Holmquist
Address: 6-875 Main St W Hamilton ON
Phone: 289.339.8072
Fax: 905.577.6207
Email: sholmquist@pinchin.com
jcozzitroto@pinchin.com

Project: Lake Avenue School - HazMat Window Project

Client Notes: Hamilton-Wentworth District School Board

P.O. #: 269536.024
Date Submitted: Jan 20 2021

Analysis: PLM BULK EPA 600 - Stop Positive
TurnAroundTime: 4 - Day

***Instructions:**
Use Column "B" for your contact info

To See an Example Click the
bottom Example Tab.

90

**Begin Samples with a "<<" above the first sample
and end with a ">>" below the last sample.**

Only Enter your data on the first sheet "Sheet1"

Note: Data 1 and Data 2 are optional
fields that do not show up on the official
report, however they will be included

in the electronic data returned to you
to facilitate your reintegration of the report data.

Scientific
Analytical
Institute



4604 Dundas Dr.
Greensboro, NC 27407
Phone: 336.292.3888

Fax: 336.292.3313
Email: lab@sailab.com

Sample Number	Data 1 (Lab use only)	Sample Description	Data 2 (Lab use only)
---------------	-----------------------	--------------------	-----------------------

<<

S0001A		Caulking,Grey Caulking Around Interior Windows,Loc:1,1971	
S0001B		Caulking,Grey Caulking Around Interior Windows,Loc:1,1971	
S0001C		Caulking,Grey Caulking Around Interior Windows,Loc:1,1971	
S0002A		Floor,Vinyl Floor Tile And Mastic,12x12 Green With Dark Green Fleck,Loc:1,1971	
S0002B		Floor,Vinyl Floor Tile And Mastic,12x12 Green With Dark Green Fleck,Loc:1,1971	
S0002C		Floor,Vinyl Floor Tile And Mastic,12x12 Green With Dark Green Fleck,Loc:1,1971	
S0003A		Caulking,Grey Caulking Around Exterior Door,Loc:1,1971	
S0003B		Caulking,Grey Caulking Around Exterior Door,Loc:1,1971	
S0003C		Caulking,Grey Caulking Around Exterior Door,Loc:1,1971	
S0004A		Floor,Vinyl Floor Tile And Mastic,12x12 Grey With Grey Fleck,Loc:1,1971	
S0004B		Floor,Vinyl Floor Tile And Mastic,12x12 Grey With Grey Fleck,Loc:1,1971	
S0004C		Floor,Vinyl Floor Tile And Mastic,12x12 Grey With Grey Fleck,Loc:1,1971	
S0005A		Caulking,White Caulking Around Exterior Doors,Loc:2,2011	
S0005B		Caulking,White Caulking Around Exterior Doors,Loc:2,2011	

Accepted



Rejected



John 1/25

10:30A

71958506

S0005C	Caulking,White Caulking Around Exterior Doors,Loc:2,2011
S0006A	Caulking,Get Caulking Around Windows,Loc:2,2011
S0006B	Caulking,Get Caulking Around Windows,Loc:2,2011
S0006C	Caulking,Get Caulking Around Windows,Loc:2,2011
S0007A	Caulking,Grey Caulking Around Exterior Windows,Loc:3,1951
S0007B	Caulking,Grey Caulking Around Exterior Windows,Loc:3,1951
S0007C	Caulking,Grey Caulking Around Exterior Windows,Loc:3,1951
S0008A	Caulking,Black Butyl Tape On Door,Loc:3,1951
S0008B	Caulking,Black Butyl Tape On Door,Loc:3,1951
S0008C	Caulking,Black Butyl Tape On Door,Loc:3,1951
S0009A	Caulking,Grey Caulking Around Exterior Door,Loc:3,1951
S0009B	Caulking,Grey Caulking Around Exterior Door,Loc:3,1951
S0009C	Caulking,Grey Caulking Around Exterior Door,Loc:3,1951
S0010A	Caulking,Grey Butyl Tape,Loc:3,1951
S0010B	Caulking,Grey Butyl Tape,Loc:3,1951
S0010C	Caulking,Grey Butyl Tape,Loc:3,1951
S0011A	Caulking,Black Butyl Tape In Windows,Loc:3,1951
S0011B	Caulking,Black Butyl Tape In Windows,Loc:3,1951
S0011C	Caulking,Black Butyl Tape In Windows,Loc:3,1951
S0012A	Floor,Vinyl Floor Tile And Mastic,12x12 Green With White Fleck,Loc:4,1974
S0012B	Floor,Vinyl Floor Tile And Mastic,12x12 Green With White Fleck,Loc:4,1974
S0012C	Floor,Vinyl Floor Tile And Mastic,12x12 Green With White Lines,Loc:5,1982
S0013A	Caulking,Brown Caulking Around Exterior Door,Loc:4,1974
S0013B	Caulking,Brown Caulking Around Exterior Door,Loc:4,1974
S0013C	Caulking,Brown Caulking Around Exterior Door,Loc:4,1974
S0014A	Caulking,Black Butyl Tape On Exterior Doors,Loc:4,1974
S0014B	Caulking,Black Butyl Tape On Exterior Doors,Loc:4,1974
S0014C	Caulking,Black Butyl Tape On Exterior Doors,Loc:4,1974
S0015A	Caulking,Grey Caulking Around Exterior Windows,Loc:4,1974
S0015B	Caulking,Grey Caulking Around Exterior Windows,Loc:4,1974
S0015C	Caulking,Grey Caulking Around Exterior Windows,Loc:4,1974
S0016A	Cement Product,Window Sill,Loc:4,1974
S0016B	Cement Product,Window Sill,Loc:4,1974
S0016C	Cement Product,Window Sill,Loc:4,1974
S0017A	Floor,Vinyl Floor Tile And Mastic,12x12 Beige,Loc:4,1974
S0017B	Floor,Vinyl Floor Tile And Mastic,12x12 Beige,Loc:4,1974
S0017C	Floor,Vinyl Floor Tile And Mastic,12x12 Beige,Loc:4,1974

11958526

S0018A	Caulking,Grey Butyl Tape On Exterior Door,Loc:4,1974
S0018B	Caulking,Grey Butyl Tape On Exterior Door,Loc:4,1974
S0018C	Caulking,Grey Butyl Tape On Exterior Door,Loc:4,1974
S0019A	Caulking,Grey Butyl Tape On Exterior Windows,Loc:4,1974
S0019B	Caulking,Grey Butyl Tape On Exterior Windows,Loc:4,1974
S0019C	Caulking,Grey Butyl Tape On Exterior Windows,Loc:4,1974
S0020A	Caulking,Black Butyl Tape On Exterior Windows,Loc:4,1974
S0020B	Caulking,Black Butyl Tape On Exterior Windows,Loc:4,1974
S0020C	Caulking,Black Butyl Tape On Exterior Windows,Loc:4,1974
S0021A	Floor,Vinyl Floor Tile And Mastic,12x12 Orange With White Lines,Loc:4,1974
S0021B	Floor,Vinyl Floor Tile And Mastic,12x12 Orange With White Lines,Loc:4,1974
S0021C	Floor,Vinyl Floor Tile And Mastic,12x12 Orange With White Lines,Loc:4,1974
S0022A	Caulking,Grey Caulking Around Exterior Door,Loc:5,1982
S0022B	Caulking,Grey Caulking Around Exterior Door,Loc:5,1982
S0022C	Caulking,Grey Caulking Around Exterior Door,Loc:5,1982
S0023A	Caulking,Grey Caulking On Exterior Doors,Loc:5,1982
S0023B	Caulking,Grey Caulking On Exterior Doors,Loc:5,1982
S0023C	Caulking,Grey Caulking On Exterior Doors,Loc:5,1982
S0024A	Floor,Vinyl Floor Tile And Mastic,12x12 Brown With White Lines,Loc:5,1982
S0024B	Floor,Vinyl Floor Tile And Mastic,12x12 Brown With White Lines,Loc:5,1982
S0024C	Floor,Vinyl Floor Tile And Mastic,12x12 Brown With White Lines,Loc:5,1982
S0025A	Caulking,Grey Caulking On Exterior Windows,Loc:1,1971
S0025B	Caulking,Grey Caulking On Exterior Windows,Loc:1,1971
S0025C	Caulking,Grey Caulking On Exterior Windows,Loc:1,1971
S0026A	Caulking,Black Butyl Tape,Loc:1,1971
S0026B	Caulking,Black Butyl Tape,Loc:1,1971
S0026C	Caulking,Black Butyl Tape,Loc:1,1971
S0027A	Caulking,Grey Caulking Around Exterior Windows,Loc:4,1974
S0027B	Caulking,Grey Caulking Around Exterior Windows,Loc:4,1974
S0027C	Caulking,Grey Caulking Around Exterior Windows,Loc:4,1974
S0028A	Caulking,Grey Caulking Around Exterior,Loc:4,1974
S0028B	Caulking,Grey Caulking Around Exterior,Loc:4,1974
S0028C	Caulking,Grey Caulking Around Exterior,Loc:4,1974
S0029A	Caulking,Grey Caulking On Exterior Doors,Loc:1,1971
S0029B	Caulking,Grey Caulking On Exterior Doors,Loc:1,1971
S0029C	Caulking,Grey Caulking On Exterior Doors,Loc:1,1971
S0030A	Caulking,White Caulking Around Exterior Windows,Loc:3,1951

11958504

S0030B
S0030C

Caulking, White Caulking Around Exterior Windows, Loc: 3, 1951
Caulking, White Caulking Around Exterior Windows, Loc: 3, 1951



Pinchin Ltd. Asbestos Laboratory *Certificate of Analysis*

Project Name:	Hamilton-Wentworth District School Board, Lake Avenue School, 157 Lake Ave, Hamilton, ON		
Project No.:	0269536.024		
Prepared For:	S. Holmquist / J. Cozzitorto		
Lab Reference No.:	b245339	Date Received:	February 8, 2021
Analyst(s):	W. Mirza	Date Analyzed:	February 8, 2021
	T. Lam	# Samples submitted:	22
	Y. Park	# Phases analyzed:	30

Method of Analysis:

EPA 600/R-93/116 - Method for the Determination of Asbestos in Bulk Building Materials dated July, 1993

Bulk samples are checked visually and scanned under a stereomicroscope. Slides are prepared and observed under a Polarized Light Microscope (PLM) at magnifications of 40X, 100X or 400X as appropriate. Asbestos fibres are identified by a combination of morphology, colour, refractive index, extinction, sign of elongation, birefringence and dispersion staining colours. A visual estimate is made of the percentage of asbestos present. A reported concentration of less than (<) the regulatory threshold indicates the presence of confirmed asbestos in trace quantities, limited to only a few fibres or fibre bundles in an entire sample. This method complies with provincial regulatory requirements where applicable. Multiple phases within a sample are analyzed and reported separately.

All bulk samples submitted to this laboratory for asbestos analysis are retained for a minimum of three months. Samples may be retrieved, upon request, for re-examination at any time during that period.

The Pinchin Ltd. Mississauga asbestos laboratory is accredited by the National Institute of Standards and Technology, National Voluntary Laboratory Accreditation Program (NVLAP Lab Code 101270-0) for the 'EPA – 40 CFR Appendix E to Subpart E of Part 763, Interim Method of the Determination of Asbestos in Bulk Insulation Samples,' and the 'EPA 600/R-93/116: Method for the Determination of Asbestos in Bulk Building Materials'; and meets all requirements of ISO/IEC 17025:2017.

This report relates only to the items tested.

NOTE: *This test report may not be reproduced, except in full, without the written approval of the laboratory. The client may not use this report to claim product endorsement by NVLAP or any agency of the U.S. Government. This report is valid only when signed in blue ink by the analyst. Vinyl asbestos floor tiles contain very fine fibres of asbestos and may be missed by some laboratories using the PLM method. Internal verification studies performed by Pinchin indicate that the chance of missing asbestos in floor tiles is no higher than about 2%. The vinyl tile study and laboratory documentation on measurement uncertainty is available upon request. The analysis of dust samples by PLM cannot be used as an indicator of past or present airborne asbestos fibre levels.*



Pinchin Ltd. Asbestos Laboratory Certificate of Analysis

Project Name: Hamilton-Wentworth District School Board,
 Lake Avenue School, 157 Lake Ave, Hamilton, ON
Project No.: 0269536.024
Prepared For: S. Holmquist / J. Cozzitorto

Lab Reference No.: b245339
Date Analyzed: February 8, 2021

BULK SAMPLE ANALYSIS

SAMPLE IDENTIFICATION	SAMPLE DESCRIPTION	% COMPOSITION (VISUAL ESTIMATE)	
		ASBESTOS	OTHER
S0014C Caulking, Black Butyl Tape On Exterior Doors, Loc: 4, 1974	Homogeneous, brown, caulking material.	None Detected	Cellulose 10-25% Non-Fibrous Material > 75%
S0020B Caulking, Black Butyl Tape On Exterior Windows, Loc: 4, 1974	Homogeneous, black, caulking material.	None Detected	Non-Fibrous Material > 75%
S0020C Caulking, Black Butyl Tape On Exterior Windows, Loc: 4, 1974	Homogeneous, black, caulking material.	None Detected	Non-Fibrous Material > 75%
S0031A Cream paint on masonry wall - Location 5	Non-homogeneous, beige and white, coating material.	None Detected	Non-Fibrous Material > 75%
S0031B Cream paint on masonry wall - Location 5	Non-homogeneous, beige, green, and white, coating material.	None Detected	Non-Fibrous Material > 75%
S0031C Cream paint on masonry wall - Location 5	Non-homogeneous, beige and white, coating material.	None Detected	Non-Fibrous Material > 75%
S0032A Mortar - Location 5	2 Phases: a) Homogeneous, grey, hard, cementitious material.	None Detected	Non-Fibrous Material > 75%
	b) Homogeneous, white, thick, coating material.	None Detected	Non-Fibrous Material > 75%



Pinchin Ltd. Asbestos Laboratory
Certificate of Analysis

Project Name: Hamilton-Wentworth District School Board,
Lake Avenue School, 157 Lake Ave, Hamilton, ON
Project No.: 0269536.024
Prepared For: S. Holmquist / J. Cozzitorto

Lab Reference No.: b245339
Date Analyzed: February 8, 2021

BULK SAMPLE ANALYSIS

SAMPLE IDENTIFICATION	SAMPLE DESCRIPTION	% COMPOSITION (VISUAL ESTIMATE)	
		ASBESTOS	OTHER
S0032B Mortar - Location 5	2 Phases: a) Homogeneous, grey, hard, cementitious material.	None Detected	Non-Fibrous Material > 75%
	b) Homogeneous, white, thick, coating material.	None Detected	Non-Fibrous Material > 75%
S0032C Mortar - Location 4	2 Phases: a) Homogeneous, grey, hard, cementitious material.	None Detected	Non-Fibrous Material > 75%
	b) Homogeneous, white, coating material.	None Detected	Non-Fibrous Material > 75%
S0032D Mortar - Location 4	2 Phases: a) Homogeneous, grey, hard, cementitious material.	None Detected	Non-Fibrous Material > 75%
	b) Homogeneous, white, thick, coating material.	None Detected	Non-Fibrous Material > 75%
S0032E Mortar - Location 1	2 Phases: a) Homogeneous, red, hard, cementitious material.	None Detected	Non-Fibrous Material > 75%
	b) Homogeneous, white, coating material.	None Detected	Non-Fibrous Material > 75%



Pinchin Ltd. Asbestos Laboratory
Certificate of Analysis

Project Name: Hamilton-Wentworth District School Board,
Lake Avenue School, 157 Lake Ave, Hamilton, ON
Project No.: 0269536.024
Prepared For: S. Holmquist / J. Cozzitorto

Lab Reference No.: b245339
Date Analyzed: February 8, 2021

BULK SAMPLE ANALYSIS

SAMPLE IDENTIFICATION	SAMPLE DESCRIPTION	% COMPOSITION (VISUAL ESTIMATE)	
		ASBESTOS	OTHER
S0032F Mortar - Location 3	2 Phases: a) Homogeneous, grey, hard, cementitious material.	None Detected	Non-Fibrous Material > 75%
	b) Homogeneous, red, hard, cementitious material.	None Detected	Non-Fibrous Material > 75%
S0032G Mortar - Location 3	2 Phases: a) Homogeneous, grey, hard, cementitious material.	None Detected	Non-Fibrous Material > 75%
	b) Non-homogeneous, red and dark brown, hard, cementitious material.	None Detected	Non-Fibrous Material > 75%
S0033A Cream paint on masonry wall - Location 4	Homogeneous, beige, coating material.	None Detected	Non-Fibrous Material > 75%
S0033B Cream paint on masonry wall - Location 4	Homogeneous, beige, coating material.	None Detected	Non-Fibrous Material > 75%
S0033C Cream paint on masonry wall - Location 4	Homogeneous, beige, coating material.	None Detected	Non-Fibrous Material > 75%
S0034A White paint on masonry wall - Location 1	Non-homogeneous, white and red, coating material.	None Detected	Non-Fibrous Material > 75%
S0034B White paint on masonry wall - Location 1	Homogeneous, white and red, coating material.	None Detected	Non-Fibrous Material > 75%
S0034C White paint on masonry wall - Location 1	Non-homogeneous, white and beige, coating material.	None Detected	Non-Fibrous Material > 75%



Pinchin Ltd. Asbestos Laboratory
Certificate of Analysis

Project Name: Hamilton-Wentworth District School Board,
Lake Avenue School, 157 Lake Ave, Hamilton, ON
Project No.: 0269536.024
Prepared For: S. Holmquist / J. Cozzitorto

Lab Reference No.: b245339
Date Analyzed: February 8, 2021

BULK SAMPLE ANALYSIS

SAMPLE IDENTIFICATION	SAMPLE DESCRIPTION	% COMPOSITION (VISUAL ESTIMATE)	
		ASBESTOS	OTHER
S0035A Beige paint on plaster wall - Location 3	2 Phases: a) Homogeneous, white, drywall joint compound.	None Detected	Non-Fibrous Material > 75%
	b) Non-homogeneous, beige, green and blue, coating material.	None Detected	Non-Fibrous Material > 75%
S0035B Beige paint on plaster wall - Location 3	Non-homogeneous, beige, green and blue, coating material.	None Detected	Non-Fibrous Material > 75%
S0035C Beige paint on plaster wall - Location 3	Non-homogeneous, beige, green and blue, coating material.	None Detected	Non-Fibrous Material > 75%

Reviewed by:

Reporting Analyst:

Analyzed by: WM
 Reviewed by: KB
 Report Sent by: KB

Pinchin Ltd. - Asbestos Laboratory Internal Asbestos Bulk Sample Chain of Custody

Client Name:	Hamilton-Wentworth District School Board	Project Address:	157 Lake Ave, Hamilton, ON
Portfolio/Building No:	Lake Avenue School	Pinchin File:	269536.024
Submitted by:	Stephen Holmquist	Email:	sholmquist@pinchin.com
CC Results to:	Jessica Cozzitorto	CC Email:	jcozzitorto@pinchin.com
Date Submitted:	February 8 2021	Required by:	February 8 2021
# of Samples:	22	Priority:	Rush Turnaround
Year of Building Construction (Mandatory, Years ONLY):		1951	
Do NOT Stop on Positive (Sample Numbers):			
Pinchin Group Company (Mandatory Field):		Pinchin	
HMIS2 Building Reference #:		85650/20210119040709861331	
To be Completed by Lab Personnel Only:			
Lab Reference #:	6245339	Time:	24 hour clock
Received by:	JRB Feb 8/21	Date:	Month Day Year
Name(s) of Analyst(s):	WM / TTL / YP Feb 8, 2021		
Sample Prefix	Sample No.	Sample Suffix	Sample Description/Location (Mandatory)
S	0014	C	Caulking, Black Butyl Tape On Exterior Doors, Loc:4, 1974 ND
S	0020	B	Caulking, Black Butyl Tape On Exterior Windows, Loc:4, 1974 ND
S	0020	C	Caulking, Black Butyl Tape On Exterior Windows, Loc:4, 1974 ND
S	0031	A	Cream paint on masonry wall - Loc 5 ND
S	0031	B	" " ND
S	0031	C	" " ND
S	0032	A	Mortar - Loc 5 a)MO b)MO
S	0032	B	Mortar - Loc 5 a)MO b)MO

Wm	S	0032	C	Mortar - Loc 4 a/mo b/mo
	S	32	D	Mortar - Loc 4 a/mo b/mo
	S	32	E	Mortar - Loc 1 a/mo b/mo
	S	32	F	Mortar - Loc 3 a/mo b/mo
	S	32	G	Mortar Loc 3 a/mo b/mo
TTL	S	0033	A	Cream paint on masonry wall Loc 4 NO
	S	33	B	" " NO
	S	33	C	" " NO
	S	0034	A	White paint on masonry wall - Loc 1 NO
	S	0034	B	" " NO
	S	34	C	" " NO
	S	0035	A	Beige paint on plaster wall - Loc 3 a/mo b/mo
	S	35	B	" " Loc 3 NO
	S	35	C	" " " NO
	S			

APPENDIX II-B
Lead Analytical Certificates



Analysis for Lead Concentration in Paint Chips

by Flame Atomic Absorption Spectroscopy
EPA SW-846 3050B/6010C/7000B



Customer: Pinchin Ltd.
6-875 Main St West
Suite 200
Hamilton, Ontario L8S 4P9

Attn: Stephen Holmquist
Jessica Cozzitorto

Project: Lake Avenue School - HazMat Window Project

Lab Order ID: 71958516
Analysis ID: 71958516_PBP
Date Received: 1/25/2021
Date Reported: 1/28/2021

Sample ID	Description	Mass (g)	Concentration (ppm)	Concentration (% by weight)
Lab Sample ID	Lab Notes			
L0001	Wall, Masonry, White, Loc:1, 1971	0.0634	< 63	< 0.0063%
71958516PBP_1				
L0002	Wall, Masonry, White, Loc:2, 2011	0.0573	< 70.	< 0.0070%
71958516PBP_2				
L0003	Wall, Masonry, White, Loc:3, 1951	0.0633	< 63	< 0.0063%
71958516PBP_3				
L0004	Wall, Plaster, Grey, Loc:3, 1951	0.0606	1700	0.17%
71958516PBP_4				
L0005	Wall, Masonry, White, Loc:4, 1974	0.0692	290	0.029%
71958516PBP_5				
L0006	Wall, Masonry, White, Loc:5, 1982	0.0912	64	0.0064%
71958516PBP_6				

Unless otherwise noted blank sample correction was not performed on analytical results. Scientific Analytical Institute participates in the AIHA ELPAT program. ELPAT Laboratory ID: 173190. This report relates only to the samples tested and may not be reproduced, except in full, without the written approval of SAI. Analytical uncertainty available upon request. The quality control samples run with the samples in this report have passed all EPA required specifications unless otherwise noted. RL: (Report Limit for an undiluted 50ml sample is 4µg Total Pb). Unless indicated, areas and volumes were provided by the customer.

Matthew Caffey (6)

Analyst

Scientific Analytical Institute, Inc. 4604 Dundas Dr. Greensboro, NC 27407 (336) 292-3888

Laboratory Director

1195-0016
Version 1-15-2012

Client:	Pinchin Ltd.	*Instructions: Use Column "B" for your contact info To See an Example Click the bottom Example Tab. 6 Begin Samples with a "<<" "above the first sample and end with a ">>" below the last sample. Only Enter your data on the first sheet "Sheet1" <i>Note: Data 1 and Data 2 are optional fields that do not show up on the official report, however they will be included in the electronic data returned to you to facilitate your reintegration of the report data.</i>
Contact:	Stephen Holmquist	
Address:	6-875 Main St W Hamilton ON	
Phone:	289.339.8072	
Fax:	905.577.6207	
Email:	sholmquist@pinchin.com jcozzitroto@pinchin.com	
Project:	Lake Avenue School - HazMat	
Client Notes:	Hamilton-Wentworth District School	
P.O. #.	269536.024	
Date Submitted:	Jan 20 2021	
Analysis:	% lead by weight	
TurnAroundTime:	4 - Day	

Scientific
Analytical
Institute



4604 Dundas Dr.
Greensboro, NC 27407
Phone: 336.292.3888
Fax: 336.292.3313
Email: lab@sailab.com

Sample Number	Data 1 (Lab use only)	Sample Description	Data 2 (Lab use only)
<<		Wall, Masonry, White, Loc:1,1971	
L0001		Wall, Masonry, White, Loc:2,2011	
L0002		Wall, Masonry, White, Loc:3,1951	
L0003		Wall, Plaster, Grey, Loc:3,1951	
L0004		Wall, Masonry, White, Loc:4,1974	
L0005		Wall, Masonry, White, Loc:5,1982	
L0006			
>>			

Accepted ☒

Rejected ☐

J. J. Minard 1.25
10:30A

APPENDIX II-C
PCB Analytical Certificates

Certificate of Analysis

Stephen Holmquist

Pinchin Ltd. (Hamilton)
11-875 Main Street West, Unit 11, Hamilton, ON L8S 4R9

Date of Issue: Jan 28, 2021

Report Description: 7 solid samples were submitted for the following chemical analysis

Project Name: Lake Ave School Window Hazmat
Project No.: 269536.024
Site Location: 157 Lake Ave Hamilton, On

Date Sampled: Jan 19, 2021
Date Tested: Jan 28, 2021
Sampled by: Stephen H

Report Number: 21-0074

No.	Analyte	Result	Units	MDL	Comments	Technique / Test Method
1	<u>Sample ID.:</u> Grey caulking on exterior door - location					
	PCBs in Solid	<0.2	ug/g	0.2		LAB-M06 (EPA 3550C/8082A modified)
2	<u>Sample ID.:</u> Grey caulking on exterior door - location 5					
	PCBs in Solid	<0.2	ug/g	0.2		LAB-M06 (EPA 3550C/8082A modified)
3	<u>Sample ID.:</u> Grey caulking on exterior windows - Location 1					
	PCBs in Solid	<0.2	ug/g	0.2		LAB-M06 (EPA 3550C/8082A modified)
4	<u>Sample ID.:</u> Grey caulking around exterior windows - Location 4					
	PCBs in Solid	6	ug/g	0.2		LAB-M06 (EPA 3550C/8082A modified)
5	<u>Sample ID.:</u> Grey caulking around exterior door - Location 4					
	PCBs in Solid	<0.2	ug/g	0.2		LAB-M06 (EPA 3550C/8082A modified)
6	<u>Sample ID.:</u> Grey caulking on exterior doors - Location 1					
	PCBs in Solid	<0.2	ug/g	0.2		LAB-M06 (EPA 3550C/8082A modified)
7	<u>Sample ID.:</u> White caulking around exterior windows - Location 3					
	PCBs in Solid	<0.2	ug/g	0.2		LAB-M06 (EPA 3550C/8082A modified)

Report Number: 21-0074

No.	Analyte	Result	Units	MDL	Comments	Technique / Test Method
-----	---------	--------	-------	-----	----------	-------------------------

Results relate only to the samples tested above, as received.

Approved By:

Son C.H. Le, B. Eng. (Chem.)

Lab Manager

Phone: (519) 740-1333 Ext.: 230

Fax: (519) 740-2320

Email: SonLe@aevitas.ca

The Analytical Chemistry Laboratory of Aevitas Inc. (Ayr) is accredited for specific tests in accordance with the recognised International Standard ISO/IEC 17025:2005 by the Canadian Association for Laboratory Accreditation (CALA) Inc. This accreditation demonstrates technical competence for a defined scope and the operation of a laboratory quality management system (refer to joint ISO-ILAC-IAF Communiqué dated 8 January 2009). The laboratory quality management system of Aevitas Inc. (Ayr) meets the principles of ISO 9001:2008.

All Analytical data is subject to uncertainty which, may vary with sample matrices, sample preparation techniques and instrumental parameters. As a general guideline, uncertainty may be expressed as approximately +/- 50% of the reported value at or near the Method Detection Limit (MDL) and +/-10% or less, of the reported result that is greater than 10 times the MDL. Method Detection Limits are defined as approximately 3 times the standard deviation value (at 99% confidence level), which is obtained from replicate analysis of a low-level standard as per the Ontario MOE - MISA Protocol for the Sampling and Analysis of Industrial / Municipal Wastewater (1999). MDL determination is based on undiluted samples with relatively low matrix interferences. Where dilutions are required, the reported MDL value will be scaled proportionally.

All testing procedures follow strict guidelines and quality assurance / quality control (QA/QC) protocols. QA/QC data is available for review at any time upon client's request.

APPENDIX III
Methodology

1.0 GENERAL

Pinchin conducts a room-by-room survey (rooms, corridors, service areas, exterior, etc.) to identify the hazardous building materials as defined by the scope of work. All work is conducted in accordance with our own internal Standard Operating Procedures.

Information regarding the location and condition of hazardous building materials encountered and visually estimated quantities are recorded. The locations of any samples collected are recorded on small-scale plans.

As-built drawings and previous reports are referenced where provided.

1.1 Limitations on Scope

The assessment excludes the following:

- Articles belonging to the owner, tenant or occupant (e.g. stored items, furniture, appliances, etc.);
- Underground materials or equipment (e.g. vessels, drums, underground storage tanks, pipes, etc.);
- Building envelope, structural components, inaccessible or concealed materials or other items where sampling may cause consequential damage to the property;
- Energized systems (e.g. internal boiler components, elevators, mechanical or electrical components);
- Controlled products (e.g. stored chemicals, operational or process-related substances); and
- Materials not typically associated with construction (e.g. settled dust, spills, residual contamination from prior spills, etc.).

The assessment includes limited demolition of wall and ceiling finishes (drywall or plaster) to view concealed conditions at representative areas as permitted by the current building use. Limited destructive testing of flooring is conducted where possible (under carpets or multiple layers of flooring). Demolition of exterior building finishes, masonry walls (chases, shafts etc.), and structural items is not conducted.

1.2 Asbestos

An inspection is conducted for the presence of friable and non-friable asbestos-containing materials (ACM). A friable material is a material that when dry can be crumbled, pulverized or powdered by hand pressure.

A separate set of samples is collected of each type of homogenous material suspected to contain asbestos. A homogenous material is defined by the US EPA as material that is uniform in texture and appearance, was installed at one time, and is unlikely to consist of more than one type or formulation of material. The homogeneous materials are determined by visual examination and available information on the phases of construction and prior renovations.

Samples are collected at a rate that is in compliance with the requirements of local regulations and guidelines. The sampling strategy is also based on known ban dates and phase out dates of the use of asbestos; sampling of certain building materials is not conducted after specific construction dates. In addition, to be conservative, several years past these dates are added to account for some uncertainty in the exact start / finish date of construction and associated usage of ACM.

In some cases, manufactured products such as asbestos cement pipe are visually identified without sample confirmation.

Drywall joint compound is sampled at representative locations such as walls, ceilings, columns, bulkheads or other building components. Asbestos in drywall joint compound was banned in Canada in 1980. Drywall joint compound that is known to have been installed after 1986 (1980 plus a reasonable non-compliance period based on our experience) is presumed to non-asbestos and is not sampled.

Flooring mastic or adhesive is sampled and analyzed if present on the underside of flooring samples (vinyl floor tile and vinyl sheet flooring).

Limited demolition of masonry block walls (core holes) is conducted to investigate for loose fill vermiculite insulation. The core holes are temporarily patched with a suitable product.

The bulk samples are submitted to a NVLAP accredited laboratory for analysis. The analysis is performed in accordance with Test Method EPA/600/R-93/116: Method for the Determination of Asbestos in Bulk Building Materials, July 1993.

Analytical results are compared to the following criteria.

Jurisdiction	Friable	Non-Friable
BC	0.5% ¹	0.5%
Alberta	Any Amount ²	Any Amount ²
Saskatchewan	>0.5% ¹	>1%
Manitoba	0.1% ¹	1%

¹ Or any amount if vermiculite

² The Government of Alberta in their guideline document entitled the "Alberta Asbestos Abatement Manual" (August 2019), defines an Asbestos-Containing Material as a product or building material that contains asbestos in any quantity or percentage.

Ontario	0.5%	0.5%
Nova Scotia	0.5% ¹	0.5%
New Brunswick, Prince Edward Island, Newfound & Labrador	1%	1%
Yukon, Nunavut, Northwest Territories	1%	1%
Federal	1%	1%

The asbestos analysis is completed using a stop positive approach. Only one result meeting the above regulated criteria is required to determine that a material is asbestos-containing, but all samples must be analyzed to conclusively determine that a material is non-asbestos. The laboratory stops analyzing samples from a homogeneous material once a result equal to or greater than the regulated criteria is detected in any of the samples of that material. All samples of a homogeneous material are analyzed if no asbestos is detected. In some cases, all samples are analyzed in the sample set regardless of result.

Where building materials are described in the report as “non-asbestos” or “does not contain asbestos”, this means that either no asbestos was detected by the analytical method utilized in any of the multiple samples or, if detected, it is below the lower limit of an asbestos-containing material in the applicable regulation.

Asbestos materials are evaluated in order to make recommendations regarding remedial work. The priority for remedial action is based on several factors:

- Friability (friable or non-friable);
- Condition (good, fair, poor, debris);
- Accessibility (ranking from accessible to all building users to inaccessible);
- Efficiency of the work (for example, if damaged ACM is being removed in an area, it may be most practical to remove all ACM in the area even if it is in good condition).

For a complete description of the Evaluation Criteria and Basis of Recommendations, refer to Annex A.

1.3 Lead

Samples of distinctive paint finishes, and surface coatings present in more than a limited application, where removal of the paint is possible is collected. The samples are collected by scraping the painted finish to include base and covering applications. Drawings included show sample locations.

Analysis for lead in paints or surface coatings is performed at an accredited laboratory in accordance with EPA Method No. 3050B/Method No. 7420; flame atomic absorption.

The Ontario Ministry of Labour (MOL) has not established a lower limit for concentrations of lead in paint, below which precautions do not need to be considered during construction projects. Pinchin follows the

recommendations of the Environmental Abatement Council of Ontario (EACO) Lead Guideline for Construction, Renovation, Maintenance or Repair. The Guideline suggests that 0.1% (1,000 ppm) lead in paint represents a de minimis concentration of lead in paint for construction hygiene purposes, that is a concentration below which the lead content is not the limiting hazard in any disturbance of leaded paint for non-aggressive disturbance of painted finishes, (hand powered demolition, chipping, scraping, light sanding, etc.). The use of aggressive methods such as power grinding, torching, welding, etc. may result in significant lead exposures even with low concentrations of lead in paints (below 0.1%). Exposure from construction disturbance of paints containing lead less than 0.009% is assumed to be insignificant. Paint and surface coatings are evaluated for condition such as flaking, chipping or spalling.

Other lead building products (e.g. batteries, lead sheeting, flashing) are identified by visual observation only.

1.4 Silica

Building materials known to contain crystalline silica (e.g. concrete, cement, tile, brick, masonry, mortar) is identified by visual inspection only. Pinchin does not perform sampling of these materials for laboratory analysis of crystalline silica content.

1.5 Mercury

Building materials/products/equipment (e.g. thermostats, barometers, pressure gauges, light tubes), suspected to contain mercury are identified by visually inspection only. Dismantling of equipment suspected of containing mercury is not performed. Sampling of these materials for laboratory analysis of mercury content is not performed.

1.6 Polychlorinated Biphenyls

The potential for light ballast and wet transformers to contain PCBs is based on the age of the building, a review of maintenance records and examination of labels or nameplates on equipment, where present and accessible. The information is compared to known ban dates of PCBs and Environment Canada publications.

Dry type transformers are presumed to be free of dielectric fluids and hence non-PCB.

Fluids (mineral oil, hydraulic, Aroclor or Askarel) in transformers or other equipment are not sampled for PCB content.

Caulking or sealants are sampled for PCBs based on the date of construction or installation. Caulking installed after 1985 (1980 ban date plus a reasonable non-compliance period based on our experience) is presumed to be free of PCBs and hence not sampled. If sampled, analysis for PCBs is performed using



an ASTM test method appropriate to the sample matrix at an accredited laboratory. Sample results are compared to the criteria of 50 ppm for solids as stated in the PCB Regulation, SOR/2008-273.

1.7 Visible Mould

The presence of mould is determined by visual inspection of exposed building surfaces. If any mould growth is concealed within building cavities it is not addressed in this assessment.

Template: Methodology for Hazardous Building Materials Assessment, HAZ, January 10, 2020

APPENDIX IV
Location Summary Report

Client:Hamilton-Wentworth District School Board
Building Name: Lake Avenue School
Surveyor: Stephen Holmquist
Reassessment Surveyor:

Site: 157 Lake Ave, Hamilton, ON

Survey Date:
Last Re-Assessment:

Location No.	Name or Description	ft ²	Floor No.	Notes
1	1971	0		
2	2011	0		
3	1951	0		
4	1974	0		
5	1982	0		

APPENDIX V

Hazardous Materials Summary Report / Sample Log

Client: Hamilton-
Wentworth District
School Board

Site: 157 Lake Ave, Hamilton, ON

Building Name: Lake Avenue School

Surveyor: Stephen Holmquist **Survey Date:**

HAZMAT	Sample No	System/Material/Sample Description	Locations	LF	SF	EA	%	Type	Positive
Asbestos	S0001 ABC	OTHER CAULKING GREY CAULKING AROUND INTERIOR WINDOWS	1	0	0	0	100	None Detected	No
Asbestos	S0002 ABC	FLOOR VINYL FLOOR TILE AND MASTIC 12X12 GREEN WITH DARK GREEN FLECK	1	0	120	0	0	None Detected	No
Asbestos	S0003 ABC	OTHER CAULKING GREY CAULKING AROUND EXTERIOR DOOR	1	50	0	0	0	None Detected	No
Asbestos	S0004 ABC	FLOOR VINYL FLOOR TILE AND MASTIC 12X12 GREY WITH GREY FLECK	1	0	500	0	0	None Detected	No
Asbestos	S0005 ABC	OTHER CAULKING WHITE CAULKING AROUND EXTERIOR DOORS	2	0	0	0	0	None Detected	No
Asbestos	S0006 ABC	OTHER CAULKING GET CAULKING AROUND WINDOWS	2	0	0	0	100	None Detected	No
Asbestos	S0007 ABC	OTHER CAULKING GREY CAULKING AROUND EXTERIOR WINDOWS	3	0	0	0	100	None Detected	No
Asbestos	S0008 ABC	OTHER CAULKING BLACK BUTYL TAPE ON DOOR	3	0	0	0	100	None Detected	No
Asbestos	S0009 ABC	OTHER CAULKING GREY CAULKING AROUND EXTERIOR DOOR	3	100	0	0	0	Chrysotile	Yes
Asbestos	S0010 ABC	OTHER CAULKING GREY BUTYL TAPE	3	0	0	0	100	Chrysotile	Yes
Asbestos	S0011 ABC	OTHER CAULKING BLACK BUTYL TAPE IN WINDOWS	3	0	0	0	100	Chrysotile	Yes
Asbestos	S0012 ABC	FLOOR VINYL FLOOR TILE AND MASTIC 12X12 GREEN WITH WHITE FLECK	4,5	0	300	0	0	None Detected	No
Asbestos	S0013 ABC	OTHER CAULKING BROWN CAULKING AROUND EXTERIOR DOOR	4	30	0	0	0	None Detected	No
Asbestos	S0014 ABC	OTHER CAULKING BLACK BUTYL TAPE ON EXTERIOR DOORS	4	0	0	0	100	None Detected	No
Asbestos	S0015 ABC	OTHER CAULKING GREY CAULKING AROUND EXTERIOR WINDOWS	4	0	0	0	100	Chrysotile	Yes
Asbestos	S0016 ABC	OTHER CEMENT PRODUCT WINDOW SILL	4	0	0	0	100	None Detected	No
Asbestos	S0017 ABC	FLOOR VINYL FLOOR TILE AND MASTIC 12X12 BEIGE	4	0	100	0	0	None Detected	No
Asbestos	S0018 ABC	OTHER CAULKING GREY BUTYL TAPE ON EXTERIOR DOOR	4	0	0	0	100	Chrysotile	Yes
Asbestos	S0019 ABC	OTHER CAULKING GREY BUTYL TAPE ON EXTERIOR WINDOWS	4	0	0	0	100	None Detected	No
Asbestos	S0020 ABC	OTHER CAULKING BLACK BUTYL TAPE ON EXTERIOR WINDOWS	4	0	0	0	100	Not Analyzed	No
Asbestos	S0021 ABC	FLOOR VINYL FLOOR TILE AND MASTIC 12X12 ORANGE WITH WHITE LINES	4	0	500	0	0	None Detected	No

HAZMAT	Sample No	System/Material/Sample Description	Locations	LF	SF	EA	%	Type	Positive
Asbestos	S0022 ABC	OTHER CAULKING GREY CAULKING AROUND EXTERIOR DOOR	5	60	0	0	0	None Detected	No
Asbestos	S0023 ABC	OTHER CAULKING GREY CAULKING ON EXTERIOR DOORS	5	0	0	0	100	None Detected	No
Asbestos	S0024 ABC	FLOOR VINYL FLOOR TILE AND MASTIC 12X12 BROWN WITH WHITE LINES	5	0	0	0	0	Chrysotile	Yes
Asbestos	S0025 ABC	OTHER CAULKING GREY CAULKING ON EXTERIOR WINDOWS	1	0	0	0	100	None Detected	No
Asbestos	S0026 ABC	OTHER CAULKING BLACK BUTYL TAPE	1	0	0	0	100	None Detected	No
Asbestos	S0027 ABC	OTHER CAULKING GREY CAULKING AROUND EXTERIOR WINDOWS	4	0	0	0	100	None Detected	No
Asbestos	S0028 ABC	OTHER CAULKING GREY CAULKING AROUND EXTERIOR	4	0	0	0	100	None Detected	No
Asbestos	S0029 ABC	OTHER CAULKING GREY CAULKING ON EXTERIOR DOORS	1	0	0	0	100	None Detected	No
Asbestos	S0030 ABC	OTHER CAULKING WHITE CAULKING AROUND EXTERIOR WINDOWS	3	0	0	0	100	Chrysotile	Yes
Asbestos	S0031 ABC	OTHER PAINT CREAM ON MASONRY WALLS	5	0	0	0	100	None Detected	No
Asbestos	S0032 ABDEFG	WALL MORTAR	1,3,4,5	0	0	0	100	None Detected	No
Asbestos	S0033 ABC	OTHER PAINT CREAM ON MASONRY WALL	4	0	0	0	100	None Detected	No
Asbestos	S0034 ABC	OTHER PAINT WHITE ON MASONRY WALL	1	0	0	0	100	None Detected	No
Asbestos	S0035 ABC	OTHER PAINT BEIGE ON PLASTER WALL	3	0	0	0	100	None Detected	No
Asbestos	V9500	FLOOR VINYL FLOOR TILE AND MASTIC	1,3	0	0	0	100	Presumed Asbestos	Yes
Asbestos	V0000	CEILING CEILING TILES (LAY-IN) 24X48 PINHOLE AND FLECK	1	0	0	0	100	Non Asbestos	No
Asbestos	V0000	FLOOR LAMINATE	3	0	0	0	100	Non Asbestos	No
Asbestos	V0000	FLOOR TERRAZZO	3	0	0	0	100	Non Asbestos	No
Asbestos	V0000	FLOOR VINYL FLOOR TILE AND MASTIC 12X12 BROWN WITH DARK FLECK	2	0	0	0	100	Non Asbestos	No
Asbestos	V0000	WALL DRYWALL (NO COMPOUND)	3	0	0	0	100	Non Asbestos	No
Asbestos	V0000	WALL MASONRY	1,2,3,5	0	0	0	100	Non Asbestos	No
Asbestos	V0000	WALL PLASTER SMOOTH	3	0	0	0	100	Non Asbestos	No

HAZMAT	Sample No	System/Material/Sample Description	Locations	LF	SF	EA	%	Type	Positive
Asbestos	V0000	WALL TEXTURE COAT	3	0	0	0	100	Non Asbestos	No
Paint	L0001	WALL MASONRY WHITE	1	0	0	0	100		No
Paint	L0002	WALL MASONRY WHITE	2	0	0	0	100		No
Paint	L0003	WALL MASONRY WHITE	3	0	0	0	100		No
Paint	L0004	WALL PLASTER GREY	3	0	0	0	100	Lead (High)	Yes
Paint	L0005	WALL MASONRY WHITE	4	0	0	0	100	Lead (Low)	Yes
Paint	L0006	WALL MASONRY WHITE	5	0	0	0	100		No
Lead Product	V9000	BATTERIES IN EMER. LIGHTS	1,2	0	0	4	0	Lead Product	Yes
PCB	P0001	CAULKING GREY CAULKING ON EXTERIOR DOOR	3	0	0	0	100	-	No
PCB	P0002	CAULKING GREY CAULKING ON EXTERIOR DOOR	5	0	0	0	100	-	No
PCB	P0003	CAULKING GREY CAULKING ON EXTERIOR WINDOWS	1	0	0	0	100	-	No
PCB	P0004	CAULKING GREY CAULKING AROUND EXTERIOR WINDOWS	4	0	0	0	100	-	No
PCB	P0005	CAULKING GREY CAULKING AROUND EXTERIOR DOORS	4	0	0	0	100	-	No
PCB	P0006	CAULKING GREY CAULKING ON EXTERIOR DOORS	1	0	0	0	100	-	No
PCB	P0007	CAULKING WHITE CAULKING AROUND EXTERIOR WINDOWS	3	0	0	0	100	-	No

Legend:

Sample number		Units		
S####	Asbestos sample collected	SF	Square feet	
L####	Paint sample collected	LF	Linear feet	
P####	PCB sample collected	EA	Each	
M####	Mould sample collected	%	Percentage	
V####	Material visually similar to numbered sample collected			
V0000	Known non Hazardous Material			
V9000	Material is visually identified as Hazardous Material			
V9500	Material is presumed to be Hazardous Material			

APPENDIX VI
HMIS Data Report

ALL DATA REPORT

Client: Hamilton-Wentworth District School Board

Location: #1 : 1971

Surveyor: Stephen Holmquist

Site: Schools

Floor:

Survey Date: 2021-01-19

Building Name: Lake Avenue School

Room #:

Reassessment Surveyor:

Area (sqft): 0

Last Re-Assessment:

ASBESTOS														
System	Component	Material	Item	Covering	A*	V*	AP*	Good	Fair	Poor	Unit	Sample	Asbestos Type	Hazard
Ceiling ¹		Ceiling Tiles (lay-in), 24x48 pinhole and fleck				Y		100			%	V0000	Non-Asbestos	None
Floor		Vinyl Floor Tile and Mastic, 12x12 cream with brown fleck			A	Y		100(7)			%	V9500	Presumed Asbestos	Presumed Asbestos(NF)
Floor		Vinyl Floor Tile and Mastic, 12x12 green with dark green fleck			A	Y		120			SF	S0002ABC	None Detected	N.D. None
Floor		Vinyl Floor Tile and Mastic, 12x12 grey with grey fleck			A	Y		500			SF	S0004ABC	None Detected	N.D. None
Other		Paint, White on masonry wall			A	Y		100			%	S0034ABC	None Detected	N.D. None
Other		Caulking, Grey caulking around interior windows			A	Y		100			%	S0001ABC	None Detected	N.D. None
Other		Caulking, Grey caulking around exterior door			A	Y		50			LF	S0003ABC	None Detected	N.D. None
Other		Caulking, Grey caulking on exterior windows			A	Y		100			%	S0025ABC	None Detected	N.D. None
Other		Caulking, Black butyl tape			A	Y		100			%	S0026ABC	None Detected	N.D. None
Other		Caulking, Grey caulking on exterior doors			A	Y		100			%	S0029ABC	None Detected	N.D. None
Wall		Masonry			A	Y		100			%	V0000	Non-Asbestos	None
Wall		Mortar			A	Y		100			%	S0032E	None Detected	N.D. None

1 - 08/16/12

Client: Hamilton-Wentworth District School Board

Location: #1 : 1971

Surveyor: Stephen Holmquist

Site: Schools

Floor:

Survey Date: 2021-01-19

Building Name: Lake Avenue School

Room #:

Reassessment Surveyor:

Area (sqft): 0

Last Re-Assessment:

PAINT								
System	Item	Good	Poor	Unit	Sample	Sample Description	Amount	Hazard
Wall	Masonry	100		%	L0001	White	Pb: <0.0063 %	No

Client: Hamilton-Wentworth District School Board

Location: #1 : 1971

Surveyor: Stephen Holmquist

Site: Schools

Floor:

Survey Date: 2021-01-19

Building Name: Lake Avenue School

Room #:

Reassessment Surveyor:

Area (sqft): 0

Last Re-Assessment:

PB PRODUCTS		
Component	Quantity	Unit
Batteries In Emer. Lights	1	EA

Client: Hamilton-Wentworth District School Board

Location: #1 : 1971

Surveyor: Stephen Holmquist

Site: Schools

Floor:

Survey Date: 2021-01-19

Building Name: Lake Avenue School

Room #:

Reassessment Surveyor:

Area (sqft): 0

Last Re-Assessment:

PCB						
Component	Quantity	Unit	Sample	Sample Description	Amount	PCB
CAULKING	100	%	P0003	Grey caulking on exterior windows	<0.2 mg/kg	No
CAULKING	100	%	P0006	Grey caulking on exterior doors	<0.2 mg/kg	No

ALL DATA REPORT

Client: Hamilton-Wentworth District School Board

Site: Schools

Building Name: Lake Avenue School

Location: #2 : 2011

Floor:

Room #:

Area (sqft): 0

Surveyor: Stephen Holmquist

Survey Date: 2021-01-19

Reassessment Surveyor:

Last Re-Assessment:

ASBESTOS														
System	Component	Material	Item	Covering	A*	V*	AP*	Good	Fair	Poor	Unit	Sample	Asbestos Type	Hazard
Floor		Vinyl Floor Tile and Mastic, 12x12 brown with dark fleck			A	Y		100			%	V0000	Non-Asbestos	None
Other		Caulking, White caulking around exterior doors			A	Y						S0005ABC	None Detected	N.D. None
Other		Caulking, Grey caulking around windows			A	Y		100			%	S0006ABC	None Detected	N.D. None
Wall		Masonry			A	Y		100			%	V0000	Non-Asbestos	None

Client: Hamilton-Wentworth District School Board

Site: Schools

Building Name: Lake Avenue School

Location: #2 : 2011

Floor:

Room #:

Area (sqft): 0

Surveyor: Stephen Holmquist

Survey Date: 2021-01-19

Reassessment Surveyor:

Last Re-Assessment:

PAINT								
System	Item	Good	Poor	Unit	Sample	Sample Description	Amount	Hazard
Wall	Masonry	100		%	L0002	White	Pb: <0.0070 %	No

Client: Hamilton-Wentworth District School Board

Site: Schools

Building Name: Lake Avenue School

Location: #2 : 2011

Floor:

Room #:

Area (sqft): 0

Surveyor: Stephen Holmquist

Survey Date: 2021-01-19

Reassessment Surveyor:

Last Re-Assessment:

PB PRODUCTS		
Component	Quantity	Unit
Batteries In Emer. Lights	3	EA

ALL DATA REPORT

Client: Hamilton-Wentworth District School Board

Location: #3 : 1951

Surveyor: Stephen Holmquist

Site: Schools

Floor:

Survey Date: 2021-01-19

Building Name: Lake Avenue School

Room #:

Reassessment Surveyor:

Area (sqft): 0

Last Re-Assessment:

ASBESTOS														
System	Component	Material	Item	Covering	A*	V*	AP*	Good	Fair	Poor	Unit	Sample	Asbestos Type	Hazard
Floor		Vinyl Floor Tile and Mastic, 9x9 floor tiles			A	Y		100(7)			%	V9500	Presumed Asbestos	Presumed Asbestos(NF)
Floor		Terrazzo			A	Y		100			%	V0000	Non-Asbestos	None
Floor		Laminate			A	Y		100			%	V0000	Non-Asbestos	None
Other		Paint, Beige on plaster wall			A	Y		100			%	S0035ABC	None Detected	N.D.
Other		Caulking, Grey caulking around exterior windows			A	Y		100			%	S0007ABC	None Detected	N.D.
Other		Caulking, Black butyl tape on door			A	Y		100			%	S0008ABC	None Detected	N.D.
Other		Caulking, Grey caulking around exterior door			A	Y		100(7)			LF	S0009ABC	Chrysotile	5-10% Confirmed Asbestos(NF)
Other		Caulking, Grey butyl tape			A	Y		100(7)			%	S0010ABC	Chrysotile	0.5-5% Confirmed Asbestos(NF)
Other		Caulking, Black butyl tape in windows			A	Y		100(7)			%	S0011ABC	Chrysotile	5-10% Confirmed Asbestos(NF)
Other		Caulking, White caulking around exterior windows			A	Y		100(7)			%	S0030ABC	Chrysotile	0.5-5% Confirmed Asbestos(NF)
Wall		Plaster, Smooth			A	Y		100			%	V0000	Non-Asbestos	None
Wall		Masonry			A	Y		100			%	V0000	Non-Asbestos	None
Wall		Texture Coat, Textured plaster			A	Y		100			%	V0000	Non-Asbestos	None
Wall		Mortar			A	Y		100			%	S0032FG	None Detected	N.D.
Wall		Drywall (no compound)			C	Y		100			%	V0000	Non-Asbestos	None

Client: Hamilton-Wentworth District School Board

Location: #3 : 1951

Surveyor: Stephen Holmquist

Site: Schools

Floor:

Survey Date: 2021-01-19

Building Name: Lake Avenue School

Room #:

Reassessment Surveyor:

Area (sqft): 0

Last Re-Assessment:

PAINT								
System	Item	Good	Poor	Unit	Sample	Sample Description	Amount	Hazard
Wall	Masonry	100		%	L0003	White	Pb: <0.0063 %	No
Wall	Plaster	100		%	L0004	Grey	Pb: 0.17 %	Lead (High)

Client: Hamilton-Wentworth District School Board

Location: #3 : 1951

Surveyor: Stephen Holmquist

2021-02-09

Site: Schools

Floor:

Survey Date: 2021-01-19

Building Name: Lake Avenue School

Room #:

Reassessment Surveyor:

Area (sqft): 0

Last Re-Assessment:

Quantities shown above are based on visual approximations only and may be subject to variation. Copyright Pinchin Ltd. 2021

PCB						
Component	Quantity	Unit	Sample	Sample Description	Amount	PCB
CAULKING	100	%	P0001	Grey caulking on exterior door	<0.2 mg/kg	No
CAULKING	100	%	P0007	White caulking around exterior windows	<0.2 mg/kg	No

ALL DATA REPORT

Client: Hamilton-Wentworth District School Board

Site: Schools

Building Name: Lake Avenue School

Location: #4 : 1974

Floor:

Room #:

Area (sqft): 0

Surveyor: Stephen Holmquist

Survey Date: 2021-01-19

Reassessment Surveyor:

Last Re-Assessment:

ASBESTOS														
System	Component	Material	Item	Covering	A*	V*	AP*	Good	Fair	Poor	Unit	Sample	Asbestos Type	Hazard
Floor		Vinyl Floor Tile and Mastic, 12x12 green with white fleck			A	Y		200			SF	S0012AB	None Detected	N.D. None
Floor		Vinyl Floor Tile and Mastic, 12x12 beige			A	Y		100			SF	S0017ABC	None Detected	N.D. None
Floor		Vinyl Floor Tile and Mastic, 12x12 orange with white lines			A	Y		500			SF	S0021ABC	None Detected	N.D. None
Other		Cement Product, Window sill			A	Y		100			%	S0016ABC	None Detected	N.D. None
Other		Paint, Cream on masonry wall			A	Y		100			%	S0033ABC	None Detected	N.D. None
Other		Caulking, Brown caulking around exterior door			A	Y		30			LF	S0013ABC	None Detected	N.D. None
Other		Caulking, Black butyl tape on exterior doors			A	Y		100			%	S0014ABC	None Detected	N.D. None
Other		Caulking, Grey caulking around exterior windows			A	Y		100(7)			%	S0015ABC	Chrysotile	0.5-5% Confirmed Asbestos(NF)
Other		Caulking, Grey butyl tape on exterior door			A	Y		100(7)			%	S0018ABC	Chrysotile	0.5-5% Confirmed Asbestos(NF)
Other		Caulking, Black butyl tape on exterior windows			A	Y		100			%	S0020ABC	Not Analyzed	None
Other		Caulking, Grey butyl tape on exterior windows			A	Y		100			%	S0019ABC	None Detected	N.D. None
Other		Caulking, Grey caulking around exterior windows			A	Y		100			%	S0027ABC	None Detected	N.D. None
Other		Caulking, Grey caulking around exterior			A	Y		100			%	S0028ABC	None Detected	N.D. None
Wall		Mortar			A	Y		100			%	S0032BD	None Detected	N.D. None

Client: Hamilton-Wentworth District School Board

Site: Schools

Building Name: Lake Avenue School

Location: #4 : 1974

Floor:

Room #:

Area (sqft): 0

Surveyor: Stephen Holmquist

Survey Date: 2021-01-19

Reassessment Surveyor:

Last Re-Assessment:

PAINT								
System	Item	Good	Poor	Unit	Sample	Sample Description	Amount	Hazard
Wall	Masonry	100		%	L0005	White	Pb: 0.029 %	Lead (Low)

Client: Hamilton-Wentworth District School Board

Site: Schools

Building Name: Lake Avenue School

Location: #4 : 1974

Floor:

Room #:

Area (sqft): 0

Surveyor: Stephen Holmquist

Survey Date: 2021-01-19

Reassessment Surveyor:

Last Re-Assessment:

PCB						
Component	Quantity	Unit	Sample	Sample Description	Amount	PCB
CAULKING	100	%	P0004	Grey caulking around exterior windows	6 mg/kg	No
CAULKING	100	%	P0005	Grey caulking around exterior doors	<0.2 mg/kg	No

ALL DATA REPORT

Client: Hamilton-Wentworth District School Board
Location: #5 : 1982
Surveyor: Stephen Holmquist

Site: Schools
Floor:
Survey Date: 2021-01-19

Building Name: Lake Avenue School
Room #:
Reassessment Surveyor:

Area (sqft): 0
Last Re-Assessment:

ASBESTOS															
System	Component	Material	Item	Covering	A*	V*	AP*	Good	Fair	Poor	Unit	Sample	Asbestos Type	Amount	Hazard
Floor		Vinyl Floor Tile and Mastic, 12x12 green with white lines			A	Y		100			SF	S0012C	None Detected	N.D.	None
Floor		Vinyl Floor Tile and Mastic, 12x12 brown with white lines			A	Y						S0024ABC	Chrysotile	0.5-5%	Confirmed Asbestos(NF)
Other		Paint, Cream on masonry walls			A	Y		100			%	S0031ABC	None Detected	N.D.	None
Other		Caulking, Grey caulking around exterior door			A	Y		60			LF	S0022ABC	None Detected	N.D.	None
Other		Caulking, Grey caulking on exterior doors			A	Y		100			%	S0023ABC	None Detected	N.D.	None
Wall		Masonry			A	Y		100			%	V0000	Non-Asbestos		None
Wall		Mortar			A	Y		100			%	S0032AB	None Detected	N.D.	None

Client: Hamilton-Wentworth District School Board
Location: #5 : 1982
Surveyor: Stephen Holmquist

Site: Schools
Floor:
Survey Date: 2021-01-19

Building Name: Lake Avenue School
Room #:
Reassessment Surveyor:

Area (sqft): 0
Last Re-Assessment:

PAINT								
System	Item	Good	Poor	Unit	Sample	Sample Description	Amount	Hazard
Wall	Masonry	100		%	L0006	White	Pb: <0.0064 %	No

Client: Hamilton-Wentworth District School Board
Location: #5 : 1982
Surveyor: Stephen Holmquist

Site: Schools
Floor:
Survey Date: 2021-01-19

Building Name: Lake Avenue School
Room #:
Reassessment Surveyor:

Area (sqft): 0
Last Re-Assessment:

PCB						
Component	Quantity	Unit	Sample	Sample Description	Amount	PCB
CAULKING	100	%	P0002	Grey caulking on exterior door	<0.2 mg/kg	No

Legend:

Sample number		Units		Other	
S####	Asbestos sample collected	SF	Square feet	A	Access
L####	Paint sample collected	LF	Linear feet	V	Visible
P####	PCB sample collected	EA	Each	AP	Air Plenum
M####	Mould sample collected	%	Percentage	F	Friable material
V####	Material is visually identified to be identical to S####	LF	Linear feet	NF	Non Friable material
V0000	Known non hazardous material				
V9000	Material visually identified as a Hazardous Material			Pb	Lead
V9500	Material is presumed to be a hazardous material			Hg	Mercury
				As	Arsenic
				Cr	Chromium

Access		Condition	
A	Accessible to all building occupants	Good	No visible damage or deterioration
B	Accessible to maintenance and operations staff without a ladder	Fair	Minor, repairable damage, cracking, delamination or deterioration
C	Accessible to maintenance and operations staff with a ladder. Also rarely entered, locked areas	Poor	Irreparable damage or deterioration with exposed and missing material
D	Not normally accessible		

Action		
(1)	Clean up of ACM Debris	(2) Precautions for Access Which may Disturb ACM Debris
(4)	Precautions for Work Which may Disturb ACM in Poor Condition	(5) Proactive ACM removal (Minimum repair required for fair condition)
(7)	Management program and surveillance	(6) ACM repair